



Department
for Business
Innovation & Skills

Analysis of young people in full-time
education and employment

OCTOBER 2014

Contents

Contents 3

Analysis of young people in full-time education and employment Error! Bookmark not defined.

Analysis of young people in full-time education and employment

BIS regularly conducts internal analysis of the Labour Force Survey (LFS). Using the Q2 2014 release, along with the Office for National Statistics (ONS) LFS micro-data, levels are investigated of young people who are full-time students and in employment. Results follow:

- In 2014 Q2 there were 233,000 16-17 year olds and 601,000 18-24 year olds in full-time education and employment.
- The number of young people in full-time education who are also employed aged 16-17 has been declining since 2002.
- From 2006 the number of 18-24 year olds in full-time education and employment has been steady at around 600,000.
- The proportion of 16-17 year old individuals in full-time education and employment has fallen from 30.4% in 1998 Q3 to 15.5% in 2014 Q2. Over this same period the proportion of full-time students aged 18-24 in employment has been consistently around 10% to 11%.
- Around two fifths (41%) of young people in full-time education and employment are men.

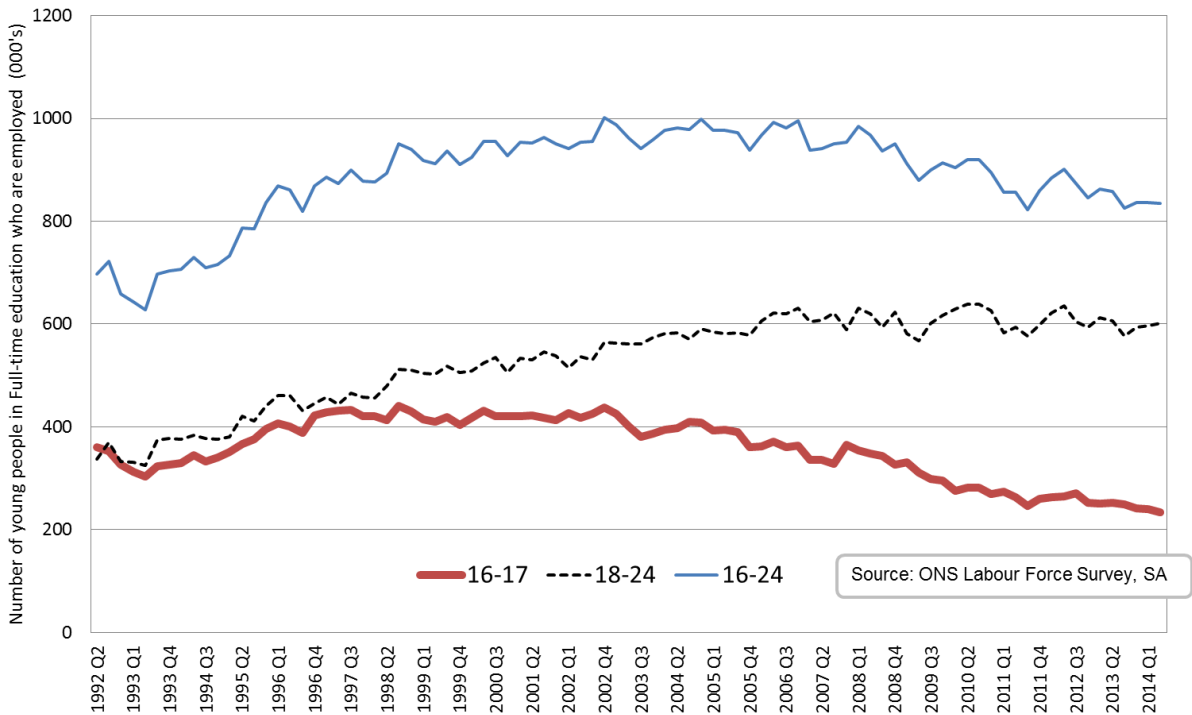
Source: ONS Labour Force Survey, seasonally adjusted data

- Around half of young people in full-time education and employment worked on a **Saturday** when interviewed in the Labour Force Survey in 2014 Q2.
- Just over a third of young people in full-time education and employment worked on a **Sunday** when interviewed in the Labour Force Survey in 2014 Q2.
- Average actual total hours worked for full-time students in employment aged 16-17 was 8.8 hours per week compared to 14.7 hours per week for 18-24 year olds in 2014 Q2.

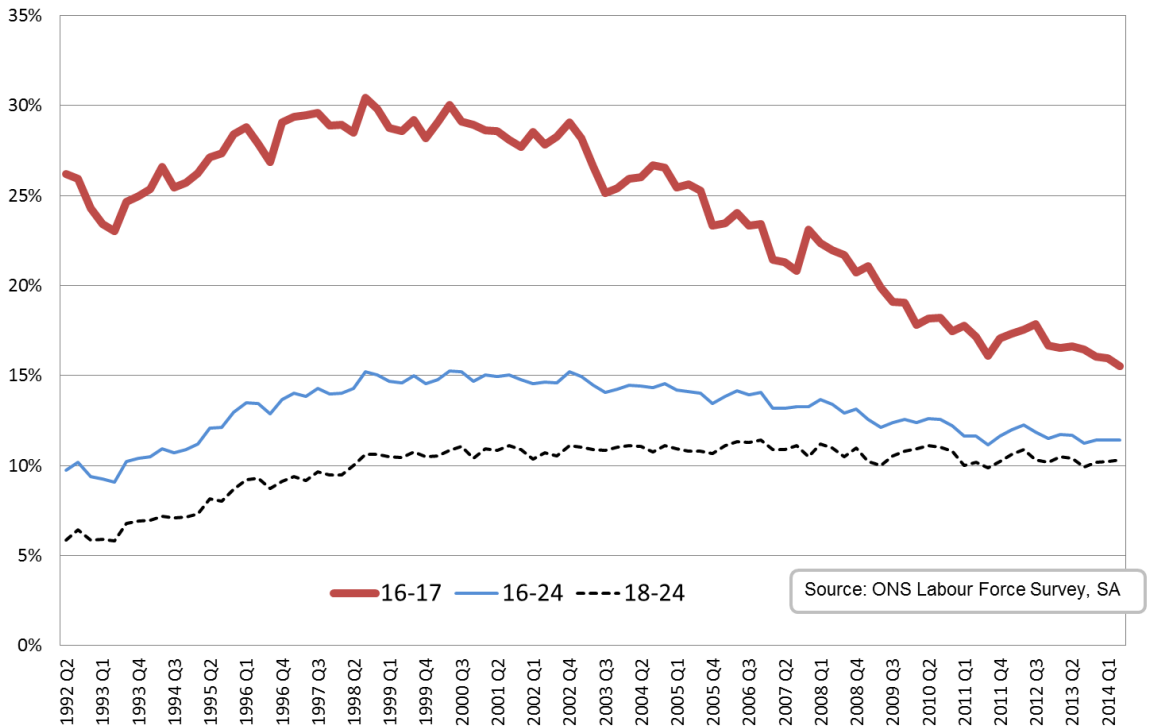
Source: ONS Labour Force Survey micro-data

Annex A: Chart data

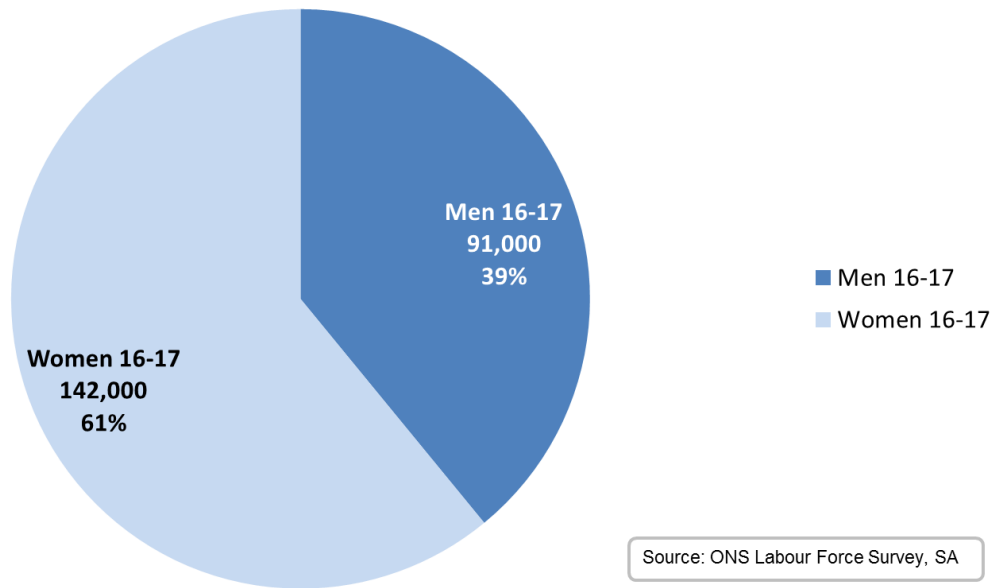
Number of young people in Full-time education who are employed, UK



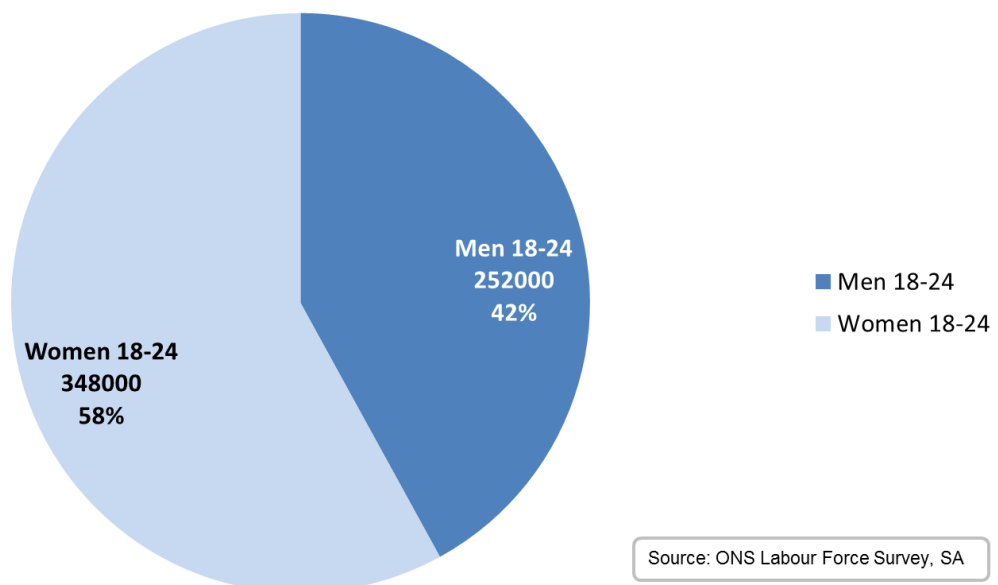
Proportion of young people in full-time education who are employed, UK



Proportion of 16-17 year olds in full-time education and employment by gender, UK 2014 Q2



Proportion of 18-24 year olds in full-time education and employment by gender, UK 2014 Q2



Annex B: Data tables

Number and proportion of those aged 16-17 in full-time education who are employed, UK (Q2 1992-2014)

UK 16-17	Number	Proportion
1992 Q2	360,000	26.2%
1993 Q2	303,000	23.0%
1994 Q2	345,000	26.6%
1995 Q2	367,000	27.1%
1996 Q2	400,000	27.9%
1997 Q2	431,000	29.5%
1998 Q2	413,000	28.5%
1999 Q2	410,000	28.6%
2000 Q2	431,000	30.0%
2001 Q2	422,000	28.6%
2002 Q2	418,000	27.8%
2003 Q2	401,000	26.6%
2004 Q2	398,000	26.0%
2005 Q2	395,000	25.6%
2006 Q2	371,000	24.1%
2007 Q2	335,000	21.3%
2008 Q2	348,000	22.0%
2009 Q2	311,000	19.9%
2010 Q2	281,000	18.2%
2011 Q2	263,000	17.2%
2012 Q2	265,000	17.5%
2013 Q2	252,000	16.6%
2014 Q2	233,000	15.5%

Source: ONS Labour Force Survey, seasonally adjusted data

Number and proportion of those aged 18-24 in full-time education who are employed, UK (Q2 1992-2014)

UK 18-24	Number	Proportion
1992 Q2	337,000	5.8%
1993 Q2	324,000	5.8%
1994 Q2	384,000	7.2%
1995 Q2	420,000	8.1%
1996 Q2	461,000	9.3%
1997 Q2	443,000	9.1%
1998 Q2	480,000	10.0%
1999 Q2	502,000	10.4%
2000 Q2	524,000	10.8%
2001 Q2	530,000	10.8%
2002 Q2	536,000	10.7%
2003 Q2	561,000	10.9%
2004 Q2	583,000	11.1%
2005 Q2	582,000	10.8%
2006 Q2	621,000	11.3%
2007 Q2	607,000	10.9%
2008 Q2	620,000	11.0%
2009 Q2	568,000	10.0%
2010 Q2	639,000	11.1%
2011 Q2	594,000	10.2%
2012 Q2	636,000	10.9%
2013 Q2	606,000	10.4%
2014 Q2	601,000	10.3%

Source: ONS Labour Force Survey, seasonally adjusted data

© Crown copyright 2014

You may re-use this information (not including logos) free of charge in any format or medium, under the terms of the Open Government Licence. Visit www.nationalarchives.gov.uk/doc/open-government-licence, write to the Information Policy Team, The National Archives, Kew, London TW9 4DU, or email: psi@nationalarchives.gsi.gov.uk.

This publication available from www.gov.uk/bis

Any enquiries regarding this publication should be sent to:

Department for Business, Innovation and Skills
1 Victoria Street
London SW1H 0ET
Tel: 020 7215 5000

If you require this publication in an alternative format, email enquiries@bis.gsi.gov.uk, or call 020 7215 5000.

BIS/14/???