

Examination results in Wales, 2013/14

This Statistical Release gives results of external examinations taken by pupils aged 15 or 17 at the beginning of the academic year, in schools in Wales in 2013/14. It updates the provisional figures published on 25 September in SDR 160/2014, with the changes shown in the notes at the end of this release.

Key results for 2013/14:

Examination results for 15 year olds continue to rise. Level 2 performance including a GCSE grade A*-C in English or Welsh first language and Mathematics (the L2 inclusive measure) has increased each year since records began in 2006/07.

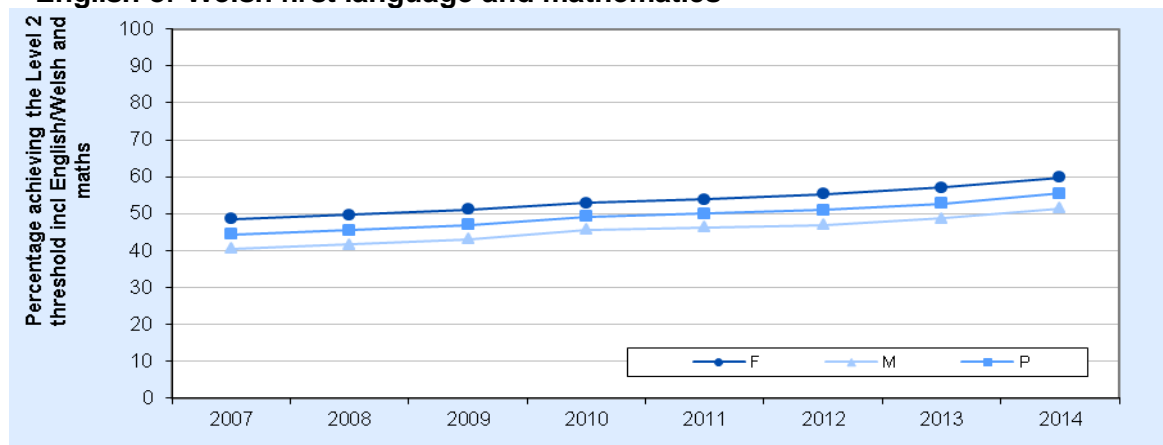
15 year olds

- 55.4 per cent achieved the Level 2 threshold including a GCSE grade A*-C in English or Welsh first language and mathematics, higher (by 2.7 percentage points) than in 2012/13 (Table 1 and Chart 1). This is the largest single year increase seen since records began in 2006/07, and performance is now 11.0 percentage points higher than that year;
- 82.3 per cent achieved the Level 2 threshold, 4.6 percentage points higher than in 2012/13;
- The average capped wider points score was 340.8, 7.7 points higher than in 2012/13 (Table 1).
- 67.2 per cent achieved A*-C in English or Welsh, 3.1 percentage points higher than in 2012/13 (Tbl 2)
- 61.7 per cent achieved A*-C in maths, 1.4 percentage points higher than in 2012/13 (Table 2)
- 82.3 per cent achieved A*-C in science, 7.5 percentage points higher than in 2012/13 (Table 2)

17 year olds

- 97.1 per cent of those entering a volume equivalent to 2 A levels achieved the Level 3 threshold, 0.6 percentage points higher than in 2012/13 and 2.7 percentage points higher compared with 2001/02;
- The average wider points score was 804.1, 2.5 points lower than in 2012/13 (Table 3).

Chart 1: Percentage of pupils aged 15 who achieved the Level 2 threshold including English or Welsh first language and mathematics



Statistician: Stephen Hughes

Tel: 029 2082 5514

Email: school.stats@wales.gsi.gov.uk

Next update: September 2015 (provisional)

Twitter: www.twitter.com/statisticswales | www.twitter.com/ystadegaucymru

Cyhoeddwyd gan Y Gwasanaethau Gwybodaeth a Dadansoddi

Llywodraeth Cymru, Parc Cathays, Caerdydd, CF10 3NQ

Ffôn – Swyddfa'r Wasg **029 2089 8099**, Ymholiadau Cyhoeddus **029 2082 3332**

www.cymru.gov.uk/ystadegau

Issued by Knowledge and Analytical Services

Welsh Government, Cathays Park, Cardiff, CF10 3NQ

Telephone – Press Office **029 2089 8099**, Public Enquiries **029 2082 5050**

www.wales.gov.uk/statistics



Table 1: Pupils aged 15 at the start of the academic year (a) (b)

	Percentage of pupils aged 15 who...						
	Number of pupils aged 15	achieved the Level 1 threshold	achieved the Level 2 threshold	achieved the Level 2 threshold including a GCSE grade A*-C in English or Welsh first language and mathematics (c)	achieved the Core Subject Indicator (d)	Average wider points score per pupil	Average capped (e) wider points score per pupil
2001/02	37,116	84.8	50.5	..	36.9
2002/03	37,993	85.1	51.1	..	37.5
2003/04	39,212	85.3	51.4	..	37.7	324.7	..
2004/05	38,495	85.2	52.2	..	38.4	327.7	..
2005/06	38,859	86.0	53.8	..	39.7	335.4	..
2006/07	39,576	86.0	55.0	44.4	40.0	343.9	..
2007/08	39,027	86.8	58.0	45.6	44.4	356.0	..
2008/09	37,607	88.2	60.7	47.2	46.0	378.9	..
2009/10	37,072	89.7	63.8	49.4	48.0	394.3	305.1
2010/11	36,088	90.3	67.3	50.1	48.7	422.9	311.6
2011/12	35,404	91.8	72.6	51.1	48.9	465.0	323.5
2012/13	36,617	93.2	77.8	52.7	49.2	501.2	333.1
2013/14	35,168	94.0	82.3	55.4	52.6	524.5	340.8
2013/14							
Males	18,075	92.5	78.6	51.4	48.7	497.1	327.8
Females	17,093	95.6	86.3	59.7	56.8	553.4	354.5

(a) Up to 2005/06, includes GCSEs, GCSE Short Course, GNVQs and NVQs. From 2006/07, includes all qualifications approved for pre-16 use in Wales.

(b) Ages at the start of the academic year. Includes results for 15 year old pupils, in maintained schools and independent schools, achieved during the academic year and any examinations taken at earlier age.

(c) Please see section 3 of the notes for more details

(d) Core Subject Indicator: achieved GCSE grade A*-C in each of English or Welsh first language, mathematics and science.

(e) Average capped wider point scores are calculated using the best 8 results.

Table 2: Pupils aged 15 at the start of the academic year (a) (b) (c)

	Percentage of pupils aged 15 who...					
	Number of pupils aged 15	achieved A*-C in English/Welsh (c)	achieved A*-C in English (d)	achieved A*-C in Welsh (e)	achieved A*-C in Maths	achieved A*-C in Science (f)
2010/11	36,088	63.7	62.8	74.6	56.5	65.9
2011/12	35,404	63.5	62.2	73.8	58.4	70.6
2012/13	36,617	64.0	62.9	73.5	60.3	74.8
2013/14	35,168	67.2	66.2	73.7	61.7	82.3

(a) Includes all qualifications approved for pre-16 use in Wales.

(b) Ages at the start of the academic year. Includes results for 15 year old pupils in maintained schools and independent schools, achieved during the academic year and any examinations taken at earlier age.

(c) For each pupil the best grade of English language, English literature, Welsh first language and Welsh literature is taken.

(d) For each pupil the best grade of English language and English literature is taken.

(e) For each pupil the best grade of first Welsh language and Welsh literature is taken. The denominator for this indicator is the number of 15 year olds who entered Welsh First Language, rather than the total number of 15 year olds.

(f) Includes single and double award core science.

Table 3: Pupils aged 17 at the start of the academic year (a) (b)

	Number of pupils aged 17 entering a volume equivalent to 2 A levels	Percentage of 17 year old pupils entering a volume equivalent to 2 A levels who achieved the Level 3 threshold	Number of pupils aged 17	Average wider points score for pupils aged 17
2001/02	9,486	94.4	11,201	..
2002/03	9,848	93.9	11,568	..
2003/04	10,041	94.9	11,822	..
2004/05	10,373	94.4	12,072	..
2005/06	10,731	93.9	12,507	..
2006/07	10,592	93.9	12,418	618.5
2007/08	10,943	94.2	12,653	630.9
2008/09	11,367	96.0	13,241	687.7
2009/10	11,653	94.9	13,586	747.9
2010/11	11,512	96.3	13,615	798.9
2011/12	11,538	96.9	13,632	772.9
2012/13	11,706	96.5	13,365	806.6
2013/14	11,447	97.1	13,102	804.1
2013/14				
Males	5,238	96.2	6,157	759.3
Females	6,209	97.8	6,945	843.8

(a) Up to 2005/06, includes A levels, AS levels and Advanced Vocational Certificates of Education (AVCE). From 2006/07, includes all qualifications approved for use in Wales.

(b) Includes independent schools, but excludes further education institutions.

Table 4: Pupils aged 15 at the start of the academic year, 2013/14, by LA (a) (b)

	Number of pupils aged 15	Percentage of pupils aged 15 who...				achieved the Core Subject Indicator (d)	Average wider points score per pupil	Average capped (e) wider points score per pupil
		achieved the Level 1 threshold	achieved the Level 2 threshold	achieved the Level 2 threshold including a GCSE grade A*-C in English or Welsh first language and mathematics (c)	achieved the Level 2 threshold			
Isle of Anglesey	653	96.0	85.6	53.8	52.5	598.3	357.2	
Gwynedd	1,329	97.2	87.7	61.1	60.5	615.8	362.2	
Conwy	1,208	95.6	85.8	55.5	52.7	510.8	346.0	
Denbighshire	1,251	95.2	88.8	55.6	54.0	562.8	351.8	
Flintshire	1,736	94.1	82.7	61.9	58.3	547.5	341.5	
Wrexham	1,273	93.1	73.9	51.0	47.8	526.5	329.3	
Powys	1,460	96.4	86.5	59.6	56.2	531.0	351.6	
Ceredigion	757	97.1	88.1	61.4	59.8	524.1	360.3	
Pembrokeshire	1,336	94.8	83.1	53.2	49.7	554.0	344.3	
Carmarthenshire	2,011	95.7	84.7	58.7	56.1	579.8	352.3	
Swansea	2,539	95.5	85.4	59.1	56.0	559.6	349.7	
Neath Port Talbot	1,667	96.6	89.4	55.8	53.7	540.1	351.4	
Bridgend	1,680	93.4	79.6	54.8	54.5	486.0	334.1	
The Vale of Glamorgan	1,590	94.0	87.0	62.2	60.1	576.1	349.8	
Rhondda, Cynon, Taff	2,805	93.2	84.6	50.5	48.7	536.7	336.5	
Merthyr Tydfil	612	95.4	82.0	48.9	46.7	546.7	339.7	
Caerphilly	2,152	93.6	74.1	50.0	47.8	467.3	326.3	
Blaenau Gwent	749	90.0	73.3	41.8	38.6	480.9	316.3	
Torfaen	1,262	95.2	82.3	53.4	52.2	484.9	337.8	
Monmouthshire	770	96.4	87.4	65.6	60.9	525.7	351.2	
Newport	1,779	93.4	83.6	52.8	51.4	519.1	339.6	
Cardiff	3,525	93.2	76.0	54.0	51.2	476.6	331.3	
Wales (f)	35,168	94.0	82.3	55.4	52.6	524.5	340.8	

(a) Includes all qualifications approved for pre-16 use in Wales.

(b) Ages at the start of the academic year. Includes results for 15 year old pupils, in maintained schools, achieved during the academic year and any examinations taken at earlier age.

(c) Please see section 3 of the notes for more details

(d) Core Subject Indicator: achieved the Level 2 threshold in each of English or Welsh first language, mathematics and science.

(e) Average capped wider point scores are calculated using the best 8 results.

(f) Includes independent schools and pupils from a non-English or Welsh background education.



- In 2013/14, Monmouthshire had the highest percentage of 15 year olds achieving the Level 2 inclusive threshold (65.6 per cent), while Blaenau Gwent had the lowest percentage (41.8 per cent).
- Gwynedd had the highest average capped points score (362.2), while Blaenau Gwent had the lowest (316.3)

Table 5: Pupils aged 17 at the start of the academic year, 2013/14, by LA (a) (b)

	Number of pupils aged 17 entering a volume equivalent to 2 A levels	Percentage of 17 year old pupils entering a volume equivalent to 2 A levels who achieved the Level 3 threshold	Number of pupils aged 17	Average wider points score for pupils aged 17
Isle of Anglesey	298	98.3	320	875.9
Gwynedd	271	98.2	290	883.7
Conwy	509	96.1	554	829.5
Denbighshire	423	98.1	497	691.4
Flintshire	583	97.1	673	750.0
Wrexham	124	90.3	164	696.4
Powys	574	98.8	628	898.7
Ceredigion	359	98.6	406	865.1
Pembrokeshire	521	96.9	572	858.4
Carmarthenshire	657	98.6	737	834.2
Swansea	555	96.8	680	690.8
Neath Port Talbot	134	97.8	148	865.0
Bridgend	648	96.6	741	805.8
The Vale of Glamorgan	711	98.7	805	923.3
Rhondda, Cynon, Taff	1,072	96.0	1,286	718.3
Merthyr Tydfil	156	98.7	177	755.8
Caerphilly	502	96.8	548	784.4
Blaenau Gwent (c)	0	.	16	13.8
Torfaen	394	99.0	450	837.4
Monmouthshire	401	95.3	437	713.7
Newport	712	94.5	798	833.9
Cardiff	1,208	96.8	1,364	885.0
Wales (d)	11,447	97.1	13,102	804.1

(a) Includes all qualifications approved for use in Wales.

(b) Ages at the start of the academic year. Includes results for 17 year old pupils, in maintained schools, achieved during the academic year and any examinations taken at earlier age.

(c) There are no longer any sixth forms in Blaenau Gwent

(d) Includes independent schools, but excludes further education institutions.



- In 2013/14 Torfaen had the highest percentage of 17 year olds who entered a volume equivalent to 2 A levels achieving the Level 3 threshold (99.0 per cent), while Wrexham had the lowest percentage (90.3 per cent);

Accessing the data electronically

The data behind the chart and tables in this release can be found on StatsWales (a free-to-use internet service that allows visitors to view, manipulate, create and download tables). Please select "Schools and Teachers" at the navigation screen of the following site: <https://statswales.wales.gov.uk/Catalogue>



School level data for 2013/14 and earlier can be found on My Local School from December: <http://mylocalschool.wales.gov.uk/>

School level data is also available on request.

Table 6: GCSE entries and results (pupils aged 15 only) by subject group, 2013/14 (a)

Subject Group	Number of entries	Percentage of entries achieved at grade:										No graded result
		A*	A	B	C	D	E	F	G	A*-C	A*-G	
Sciences												
Biological Sciences	5,911	14	27	28	23	6	1	-	-	92	100	-
Chemistry	5,895	17	25	26	24	6	1	-	-	92	100	-
Physics	5,754	17	24	27	24	6	1	-	-	92	100	-
Single Science	5,808	1	4	11	36	25	11	6	4	52	97	3
Additional Science	11,999	4	10	22	36	18	7	3	1	71	99	1
Other Science	603	9	22	25	21	11	6	4	2	77	99	1
Design and Technology	8,197	4	12	21	24	18	11	5	2	62	98	2
ICT	4,916	7	24	27	20	12	5	3	2	77	99	1
Home Economics	2,859	1	9	20	26	20	13	6	2	57	98	2
Mathematics	37,943	6	8	13	33	14	9	7	6	60	96	4
Social Sciences												
Business Studies	2,187	3	16	28	22	16	8	4	2	69	98	2
Economics	121	13	16	26	21	10	6	5	1	75	97	3
Geography	10,480	8	16	20	24	16	9	4	2	68	99	1
History	11,898	12	18	21	19	13	8	5	2	71	99	1
Humanities	89	1	9	27	20	11	9	9	6	57	92	8
Social Studies	1,766	5	17	25	20	12	9	5	4	67	97	3
Vocational Studies	1,941	1	9	22	28	21	11	4	2	61	99	1
Arts												
Art and Design	8,879	11	14	23	30	12	5	2	1	79	99	1
Classical Studies	112	21	24	25	10	8	7	3	2	79	99	1
Communication Studies	2,245	3	12	22	26	19	10	4	2	63	98	2
Drama	2,875	6	17	26	24	15	7	3	1	73	99	1
English Language	32,603	3	10	19	30	20	10	5	2	63	99	1
English Literature	25,491	5	15	26	30	15	5	2	1	76	99	1
French	4,875	14	20	22	22	14	6	2	-	78	100	-
German	1,164	13	17	23	24	14	6	2	1	78	100	-
Spanish	1,553	12	20	23	20	14	7	2	1	75	100	-
Other Modern Foreign Language	179	42	18	15	9	9	1	2	2	84	98	2
Music	2,742	12	24	27	20	10	5	1	1	83	100	-
Physical Education	6,445	8	18	26	24	16	7	2	-	76	100	-
Religious Studies	11,368	12	19	22	19	11	7	5	3	72	98	2
Welsh Language	5,546	4	12	23	35	18	6	3	1	73	100	-
Welsh Literature	3,779	7	15	23	30	13	8	3	-	75	100	-
Welsh Second language	10,183	9	20	22	26	11	6	3	2	77	99	1
Vocational Subjects (b)												
Additional Applied Science	813	-	2	17	37	26	9	5	2	56	99	1
Applied Art & Design	69	7	20	28	25	12	7	1	0	80	100	0
Applied Business	1,282	7	18	22	22	13	9	5	2	69	98	2
Applied Engineering	427	-	2	9	21	28	23	8	5	32	97	3
Health & Social Care	1,296	2	10	22	30	19	10	4	2	64	99	1
Hospitality & Catering	341	1	9	25	31	18	11	5	1	65	100	0
Leisure & Tourism	263	7	19	26	20	13	6	4	3	73	99	1
Performing Arts	185	6	21	34	18	12	6	2	1	78	99	1
All subjects	243,082	7	14	21	28	15	7	4	2	70	99	1

(a) Figures should be treated with caution - it is possible for pupils to have entered more than one GCSE within a small number of subject groups. Double awards are counted as two entries.

(b) GCSE Vocational awards were awarded for the first time in 2003/04.

- 60 per cent of entries in GCSE Mathematics achieved grade A*-C. For English Language the percentage was 63 per cent and for Welsh (First Language) it was 73 per cent;

Table 7: A level entries and results (pupils aged 17 only) by subject group, 2013/14 (a)

Subject Group	Number of entries	Percentage of entries achieved at grade:								No graded result
		A*	A	B	C	D	E	A*-C	A*-E	
Sciences										
Biological Sciences	1,993	6	20	23	21	18	9	70	96	4
Chemistry	1,772	9	26	26	19	12	7	79	98	2
Physics	1,121	8	21	24	19	15	10	71	96	4
Other Science	189	7	17	29	20	19	7	72	98	2
Design and Technology	655	2	9	22	29	25	11	61	98	2
ICT	747	1	8	20	27	21	16	57	94	6
Home Economics	17	0	0	0	29	53	18	29	100	0
Mathematics	2,755	19	27	22	15	9	5	84	98	2
Social Sciences										
Business Studies	469	4	14	26	30	18	7	73	99	1
Economics	331	9	24	25	22	15	6	79	99	1
Geography	1,284	4	17	29	27	17	5	77	99	1
History	2,395	4	21	38	28	8	1	90	100	-
Social Studies	2,080	5	12	25	25	20	8	68	96	4
Vocational Studies	7	0	0	29	43	14	0	71	86	14
Arts										
Art and Design	1,405	10	16	26	27	15	4	79	99	1
Classical Studies	56	7	27	23	27	9	5	84	98	2
Communication Studies	786	3	8	28	38	19	4	76	99	1
Drama	535	1	19	29	30	16	5	79	100	-
English Language	883	5	13	29	32	17	4	78	99	1
English Literature	1,684	7	12	29	31	17	4	79	100	-
French	340	5	23	26	19	17	8	74	98	2
German	90	8	26	33	23	7	2	90	99	1
Spanish	98	11	20	19	23	17	2	74	94	6
Other Modern Foreign Language	88	14	38	33	7	1	7	91	99	1
Music	395	4	17	23	29	18	8	73	99	1
Physical Education	523	3	9	20	24	23	15	56	94	6
Religious Studies	1,432	3	15	32	29	14	5	79	98	2
Welsh Language	252	4	21	23	33	17	2	81	100	0
Welsh Second language	305	3	13	23	31	18	11	70	99	1
Vocational Subjects (b)										
Applied Art & Design	22	36	32	27	5	0	0	100	100	0
Applied Business	416	5	16	27	28	15	7	77	98	2
Applied Engineering	*	*	*	*	*	*	*	*	*	*
Applied ICT	260	-	5	27	32	19	12	64	95	5
Applied Science	223	0	3	17	44	29	6	64	99	1
Health & Social Care	711	1	8	30	31	19	9	69	97	3
Leisure & Recreation	*	*	*	*	*	*	*	*	*	*
Performing Arts	39	0	8	38	33	10	8	79	97	3
Travel & Tourism	94	0	11	31	34	19	5	76	100	0
All subjects	26,461	7	17	27	25	16	6	76	98	2

(a) Double awards are counted as two entries.

(b) These vocational award A levels were awarded for the first time in 2006/07.

- The most popular subject for 17 year olds at A level in 2013/14 was Mathematics, with 2,755 entries.

Notes

1 Context

1.1 Related Publications

Data for England and Northern Ireland can be found at the links below. Note that the data produced by these administrations are based on pupils at the end of Key Stage 4, whereas we publish on the basis of pupils aged 15. Following the Wolf Review of Vocational Education in England and their new early entry policy, caution should be used when making comparisons with England from 2013/14. England have published 2013/14 proxy figures based on their old methodology. This additional '2013 methodology' data removes the rules regarding the Wolf Review recommendations and early entry policy from the calculation of performance measures. It is intended to provide a point of comparison, using a proxy set of results based on 2012/13 rules. However, there are limitations to this data. For example, it cannot reverse the behaviour of some schools that happened in response to the policy changes.

Comparisons cannot be made with Scotland because their examination system and qualifications are sufficiently different.

Developments are underway in Wales in moving towards producing indicators based on pupils at the end of Key Stage 4.

For further information or advice on the constraints of international comparisons please e-mail school.stats@wales.gsi.gov.uk.

For reference, examination results for the other UK countries can be found by following the links below:

England

[SFR 41/2014 Provisional GCSE and Equivalent Results in England 2013/14](#)

[SFR 42/2014 A-Level and other Level 3 Results in England 2013/14 \(Provisional\)](#)

Northern Ireland

[Qualifications and Destinations of Northern Ireland School Leavers 2012/13](#)

Scotland

[Summary statistics for attainment, leaver destinations and healthy living, No.4: 2014 Edition](#)

We also publish information on teacher assessments in core and non core subjects at foundation phase and key stages 2 and 3, which can be found here:

<http://wales.gov.uk/statistics-and-research/?topic=Education+and+skills&lang=en>

The figures differ from those published by Awarding Organisations in August. The Awarding Organisations' figures related to the outcome of the individual subject areas for all candidates in England, Wales and Northern Ireland, regardless of their age. The figures published in this Statistical First Release focus on the overall performance of candidates aged 15 and 17 taking these examinations in Wales only. These figures are here:

<http://www.jcq.org.uk/examination-results>

2 Data Source

The statistics are collated from a number of awarding organisations over the summer. The following awarding organisations provided data for this release: ABC Awards, Agored, AQA, ASDAN, British Computer Society (BCS), British Safety Council (BSC), CACHE, City and Guilds, CCEA, Cambridge International Examinations (CIE), C Skills, EMTA Awards Ltd (EAL), Edexcel, EDI, IFS School of

Finance, ILM, IMI Awards Ltd (IMIAL), NCFE, National Open College Network (NOCN), OCR, The Prince's Trust (PT), VTCT and WJEC.

3 Definitions

3.1 Coverage

The statistics in this release cover all maintained and independent schools in Wales. Only results for pupils aged 15 and 17 received from the awarding organisations listed above are included. Examinations taken at an earlier age are also included. Any examinations achieved before the age of 15 will be held back and included in the school year in which the pupil turns 15.

The information in this release relates to all schools for Wales figures and to maintained secondary schools, special schools and pupil referral units for LA figures.

Only qualifications taken up to the 31 August 2014 are included. In some cases, awards taken in the academic year 2013/14 were awarded late due to administration delays of awarding organisations. As this was not the fault of the school, these have been included. The figures now include any exam re-grades, resits and missing qualifications where evidence was provided from schools within the allotted time period or was provided automatically by the awarding organisations.

Up to 2005/06, the statistics include GCSEs, GCSE short course, GNVQs and NVQs only. From 2006/07, the statistics include all qualifications approved for pre-16 or 16-18 use in Wales. The introduction of the wider definition has meant the inclusion of a larger range of qualifications and thus an increase in the headline indicators of performance. An explanation of the different types of qualifications can be found at: <https://www.gov.uk/what-different-qualification-levels-mean>

3.2 Threshold indicators and points

Indicators showing threshold equivalencies were published (as provisional indicators) for the first time in 2007 and are now the headline indicators of performance in secondary schools. Thresholds represent a volume, or 'size', of qualifications at a specific level on the National Qualifications Framework (NQF). Three thresholds have been established: Level 1 - a volume of qualifications at Level 1 equivalent to the volume of 5 GCSEs at grade A*-G; Level 2 - a volume of qualifications at Level 2 equivalent to the volume of 5 GCSEs at grade A*-C; Level 3 - a volume of qualifications at Level 3 equivalent to the volume of 2 A levels at grade A*-E.

The average capped wider points score is calculated using the best 8 results for each pupil. Further information on how the capped points score is produced can be found in the technical document at the link below:

<http://wales.gov.uk/statistics-and-research/examination-results/?lang=en#/statistics-and-research/examination-results/?lang=en>

The average wider points score includes all approved qualifications.

English Literature and Welsh literature can count towards the L2 threshold including A*-C in English/Welsh First language and maths.

3.3 Discounting

An examination is discounted when a pupil achieves a higher grade or higher level qualification in the **same subject group**. If a qualification is discounted then **it does not** count towards the key indicators published in this release, or in any other official statistics published by the Welsh Government. We discount similar qualifications within the following subject groups:

Group 1: Entry level qualifications, GCSE short course, full GCSE, vocational double award GCSEs

Group 2: AS level, vocational double AS level, A levels, vocational double A level, AS Vocational Certificate of Education, Advanced Vocational Certificate of Education, Advanced Vocational Certificate of Education double award

Group 3: free standing maths qualifications

Group 4: key skills

Group 5: the Award in Digital Applications (AiDA), the Certificate in Digital Applications (CiDA), the Extended Certificate in Digital Applications (CiDA+) and the Diploma in Digital Applications (DiDA).

Group 6: NVQs

Group 7: BTECs and other qualifications

Group 8: the Welsh Baccalaureate

4 Rounding and symbols

In tables where figures have been rounded to the nearest final digit, there may be an apparent discrepancy between the sum of the constituent items and the total shown.

The following symbols have been used throughout the publication:

(p) provisional

- percentages less than 0.5 but higher than zero

. not applicable

.. not available

~ not yet available

* figure is less than 5, or is based on a figure less than 5.

5 Key Quality Information

This section provides a summary of information on this output against five dimensions of quality: Relevance, Accuracy, Timeliness and Punctuality, Accessibility and Clarity, and Comparability. It also covers specific issues relating to quality of 2014 data, and describes the quality management tool applied to this area of work.

5.1 Relevance

The statistics are used both within and outside the Welsh Government to monitor educational trends and as a baseline for further analysis of the underlying data. Some of the key users are:

- Ministers and the Members Research Service in the National Assembly for Wales;
- The Department for Education and Skills in the Welsh Government;
- Estyn;
- Other government departments;
- The research community;
- Regional education consortia, Local Authorities and schools;
- Students, academics and universities;
- Individual citizens, private companies and the media.

These statistics are used in a variety of ways. Some examples of these are:

- General background and research;
- Inclusions in reports and briefings;
- Advice to Ministers;
- The all-Wales education core data packs;
- LA and school comparisons and benchmarks;
- To inform the education policy decision-making process in Wales including school reorganisation;

- Development of a national school categorisation system for Wales;
- To inform ESTYN during school inspections;
- The education domain of the Welsh Index of Multiple Deprivation;
- Used for My Local School;
- To assist in research in educational attainment.

5.2 Accuracy

Schools and local authorities have now had an opportunity to assess the provisional results for accuracy, and have supplied amended information where applicable. In keeping with previous years, the change between provisional and final data for most indicators is less than 1 percentage point. The following revisions have been made to the provisional Wales level data published on September 25th:

Pupils aged 15 at the start of the academic year

	Number of pupils aged 15	Percentage of pupils aged 15 who...				Average wider points score per pupil	Average capped wider points score per pupil
		achieved the Level 1 threshold	achieved the Level 2 threshold	achieved the Level 2 threshold including a GCSE grade A*-C in English or Welsh first language and mathematics	achieved the Core Subject Indicator		
2013/14	35,168	94.0	82.3	55.4	52.6	524.5	340.8
Difference from provisional data	-2 (people)	0.1 (% points)	0.4 (% points)	0.4 (% points)	0.7 (% points)	4.0 (points)	0.8 (points)

Pupils aged 17 at the start of the academic year

	Number of pupils aged 17 entering a volume equivalent to 2 A levels	Percentage of 17 year old pupils entering a volume equivalent to 2 A levels who achieved the Level 3 threshold		Number of pupils aged 17	Average wider points score for pupils aged 17
2013/14	11,447	97.1		13,102	804.1
Difference from provisional data	10 (people)	0.0 (% points)		0 (people)	0.9 (points)

The revisions are mainly due to two factors:

- a. schools have informed us of additional qualifications gained by their students from awarding organisations we have not approached;
- b. we refresh the data from the awarding organisations approached, to include any remarks or late awards.

5.3 Timeliness and Punctuality

The data relate to all qualifications achieved between 1 September 2013 and 31 August 2014. In some cases, awards taken in the academic year 2013/14 were awarded late due to administration delays of awarding organisations. As this was not the fault of the school, these have been included. The figures now include any exam re-grades, resits and missing qualifications where evidence was provided from schools within the allotted time period or was provided automatically by the awarding organisations.

5.4 Accessibility and Clarity

This Statistical First Release is pre-announced and then published on the Statistics section of the Welsh Government website. It is accompanied by more detailed tables on [StatsWales](#), a free to use service that allows visitors to view, manipulate, create and download data.

School-level data is available through the My Local School website. The final data will be added to My Local School in December 2014.

5.5 Comparability

See section 1.1.

The review of qualifications will be in effect from the academic year 2015/16. This means that the way we will calculate our performance measures will change. This might have an impact on comparability over time and will further impede the ability to compare educational attainment in Wales with the rest of the UK. Information about the review of qualifications in Wales can be found here:

<http://wales.gov.uk/topics/educationandskills/qualificationsinwales/revofqualen/implementing-the-review-of-qualifications/?lang=en>

Information about the review of qualifications in England can be found here:

<http://www.education.gov.uk/schools/teachingandlearning/qualifications/gcses/a00221366/gcse-reform>



All content is available under the Open Government Licence v3.0 , except where otherwise stated.

<http://www.nationalarchives.gov.uk/doc/open-government-licence/version/3/>