

Annex G: Differences in degree outcomes by ethnicity

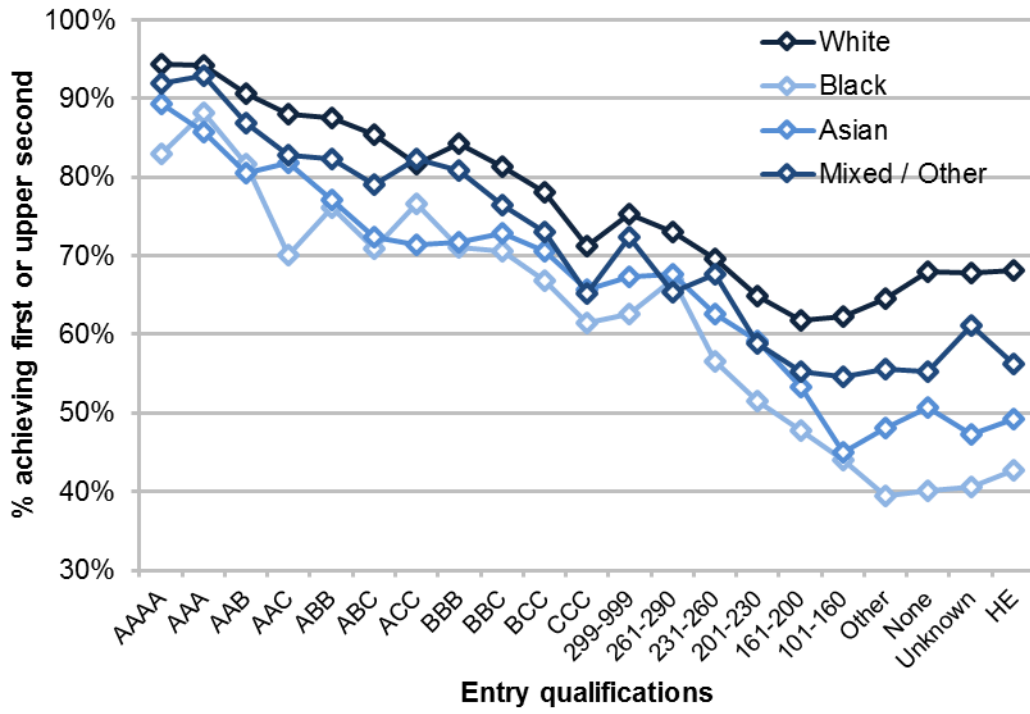
Proportion achieving first or upper second class degrees

Observed results, split by entry qualifications

Table G1: Proportion of 2013-14 graduates achieving a first or upper second class degree, by entry qualifications

Entry qualifications	White		Black		Asian		Mixed or Other	
	Number	%	Number	%	Number	%	Number	%
Overall	225,050	76%	18,880	49%	31,290	63%	13,875	69%
AAAA	8,345	94%	120	83%	1,280	89%	540	92%
AAA	18,710	94%	345	88%	2,430	86%	1,070	93%
AAB	16,420	91%	465	82%	2,025	80%	900	87%
AAC	2,490	88%	85	70%	270	82%	140	83%
ABB	13,780	88%	460	76%	1,600	77%	740	82%
ABC	8,010	85%	340	71%	975	72%	450	79%
BBB	7,220	84%	315	71%	905	72%	385	81%
ACC	2,390	82%	150	77%	345	71%	175	82%
BBC	10,425	81%	485	71%	1,455	73%	570	77%
BCC	9,540	78%	540	67%	1,395	71%	505	73%
CCC	4,465	71%	310	62%	620	66%	240	65%
299-999 points	10,770	75%	435	63%	1,435	67%	575	72%
261-290 points	6,335	73%	395	67%	1,030	68%	355	65%
231-260 points	9,780	70%	830	57%	1,805	63%	665	68%
201-230 points	5,920	65%	680	52%	1,220	59%	435	59%
161-200 points	5,670	62%	770	48%	1,455	53%	465	55%
101-160 points	3,580	62%	655	44%	975	45%	345	55%
Other	39,290	65%	5,950	39%	5,780	48%	3,100	56%
None	1,320	68%	245	40%	80	51%	80	55%
Unknown	10,170	68%	1,495	41%	1,010	47%	660	61%
Higher education (HE)	30,415	68%	3,805	43%	3,210	49%	1,470	56%

Figure G1: 2013-14 graduates achieving a first or upper second class degree by ethnicity, entry qualification and degree classification

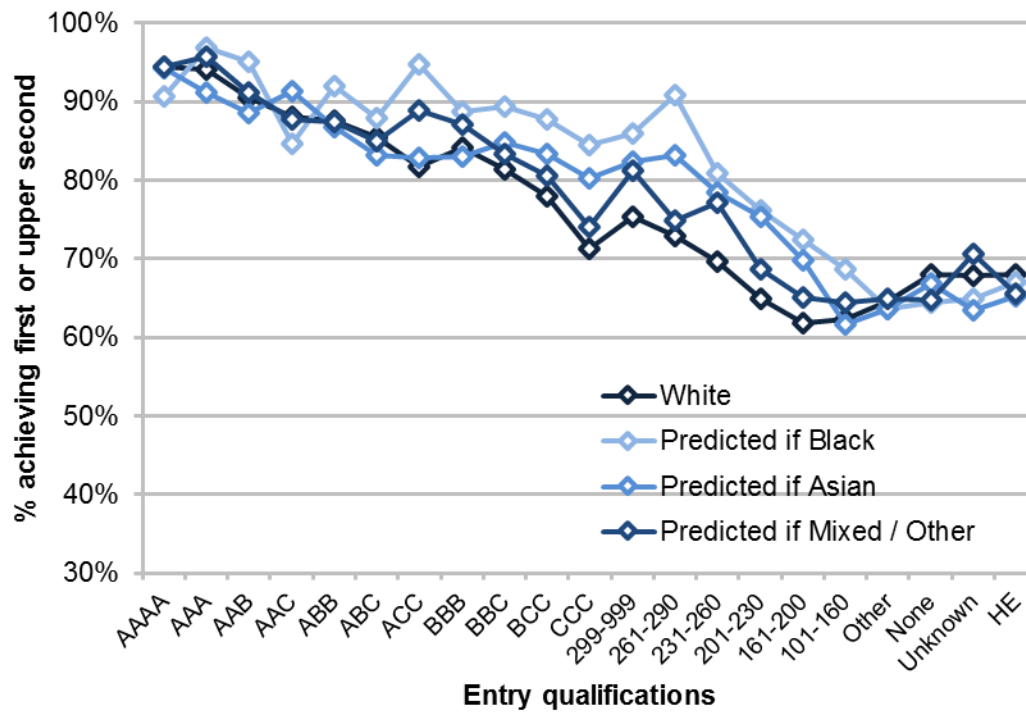


Modelling results

Table G2: Proportion of Black and minority ethnic graduates achieving a first or upper second class degree in 2013-14, by entry qualifications

Entry qualifications	White (actual)	Predicted if Black	Predicted if Asian	Predicted if Mixed or Other
AAAA	94%	91%	94%	94%
AAA	94%	97%	91%	96%
AAB	91%	95%	89%	91%
AAC	88%	85%	91%	88%
ABB	88%	92%	87%	87%
ABC	85%	88%	83%	85%
BBB	84%	89%	83%	87%
ACC	82%	95%	83%	89%
BBC	81%	89%	85%	83%
BCC	78%	88%	83%	81%
CCC	71%	84%	80%	74%
299-999 points	75%	86%	82%	81%
261-290 points	73%	91%	83%	75%
231-260 points	70%	81%	79%	77%
201-230 points	65%	76%	75%	69%
161-200 points	62%	73%	70%	65%
101-160 points	62%	69%	62%	65%
Other	65%	64%	64%	65%
None	68%	65%	67%	65%
Unknown	68%	65%	64%	71%
HE	68%	67%	65%	66%

Figure G2: The difference between the actual and modelled results for 2013-14 Black and minority ethnic graduates achieving a first or upper second class degree



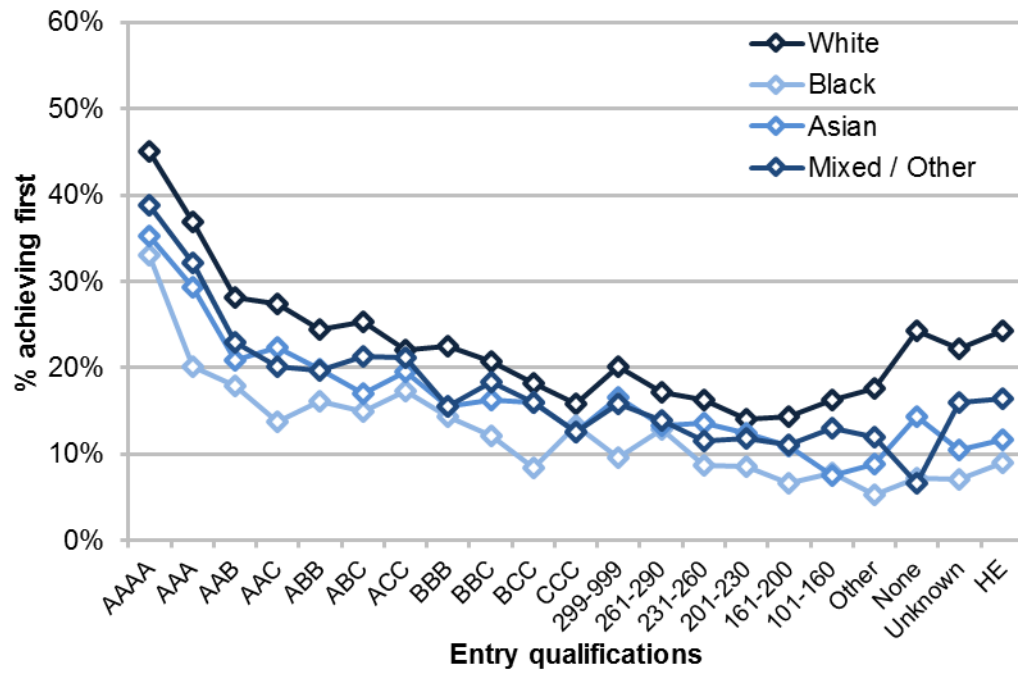
Proportion achieving first class degrees

Observed results, split by entry qualifications

Table G3: Proportion of 2013-14 graduates achieving a first class degree, by entry qualifications

Entry qualifications	White		Black		Asian		Mixed or Other	
	Number	%	Number	%	Number	%	Number	%
Overall	225,050	23%	18,880	9%	31,290	15%	13,875	17%
AAAA	8,345	45%	120	33%	1,280	35%	540	39%
AAA	18,710	37%	345	20%	2,430	29%	1,070	32%
AAB	16,420	28%	465	18%	2,025	21%	900	23%
AAC	2,490	27%	85	14%	270	22%	140	20%
ABB	13,780	24%	460	16%	1,600	20%	740	20%
ABC	8,010	25%	340	15%	975	17%	450	21%
BBB	7,220	23%	315	14%	905	16%	385	16%
ACC	2,390	22%	150	17%	345	20%	175	21%
BBC	10,425	21%	485	12%	1,455	16%	570	18%
BCC	9,540	18%	540	8%	1,395	16%	505	16%
CCC	4,465	16%	310	13%	620	13%	240	13%
299-999 points	10,770	20%	435	10%	1,435	17%	575	16%
261-290 points	6,335	17%	395	13%	1,030	13%	355	14%
231-260 points	9,780	16%	830	9%	1,805	14%	665	12%
201-230 points	5,920	14%	680	9%	1,220	12%	435	12%
161-200 points	5,670	14%	770	7%	1,455	11%	465	11%
101-160 points	3,580	16%	655	8%	975	8%	345	13%
Other	39,290	18%	5,950	5%	5,780	9%	3,100	12%
None	1,320	24%	245	7%	80	14%	80	7%
Unknown	10,170	22%	1,495	7%	1,010	10%	660	16%
HE	30,415	24%	3,805	9%	3,210	12%	1,470	16%

Figure G3: 2013-14 graduates achieving a first class degree by ethnicity, entry qualification and degree classification



Modelling results

Table G4: Proportion of Black and minority ethnic graduates achieving a first class degree in 2013-14, by entry qualifications

Entry qualifications	White (actual)	Predicted if Black	Predicted if Asian	Predicted if Mixed / Other
AAAA	45%	58%	51%	48%
AAA	37%	42%	44%	41%
AAB	28%	36%	33%	30%
AAC	27%	32%	35%	27%
ABB	24%	33%	31%	26%
ABC	25%	32%	29%	28%
BBB	23%	30%	26%	22%
ACC	22%	33%	31%	28%
BBC	21%	27%	27%	24%
BCC	18%	22%	26%	21%
CCC	16%	26%	21%	18%
299-999 points	20%	22%	25%	21%
261-290 points	17%	24%	22%	18%
231-260 points	16%	20%	22%	16%
201-230 points	14%	20%	20%	16%
161-200 points	14%	17%	19%	16%
101-160 points	16%	19%	15%	18%
Other	18%	19%	18%	18%
None	24%	24%	25%	13%
Unknown	22%	23%	20%	22%
HE	24%	26%	23%	23%

Figure G4: The difference between the actual and modelled results for 2013-14 Black and minority ethnic graduates achieving a first class degree

