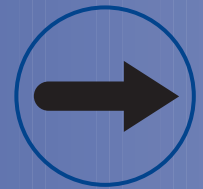


Dogfen Wybodaeth AHA rhif:
DFTE Information Document No: 027-05

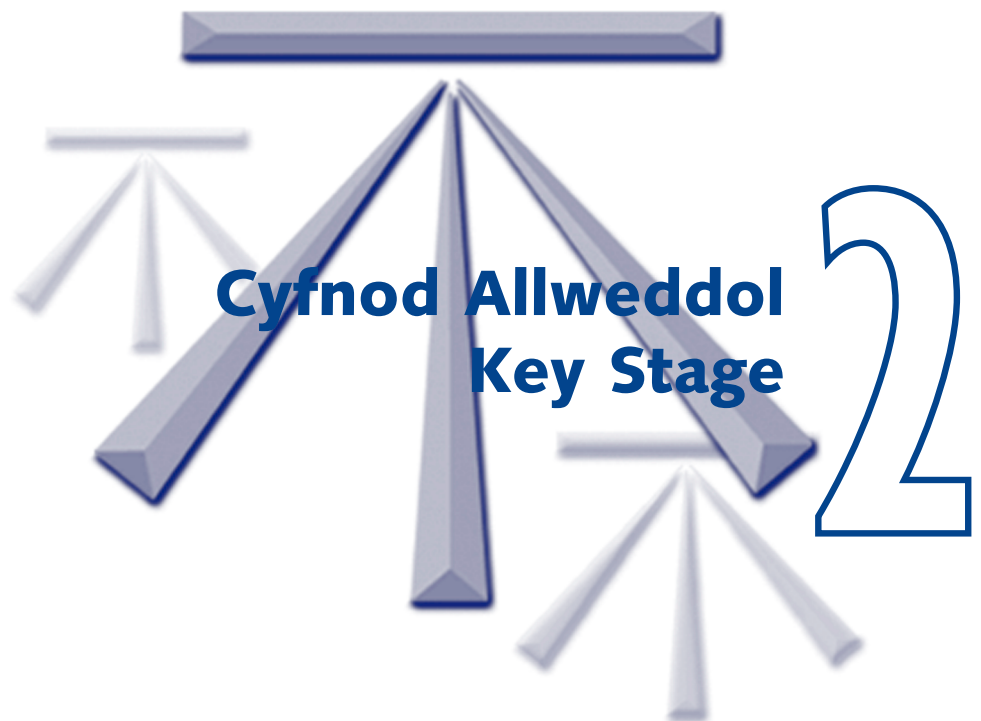
Dyddiad Argraffu: Chwefror 2004
Date of Issue: February 2004



Safonau Ysgolion
School Standards

2004

Gwybodaeth Feincnodi



Benchmark Information

Benchmark Information for Key Stage 2: 2004

Audience: Headteachers, Governing Bodies and Directors of Education

Further copies of this booklet and those listed below may be obtained from:

**Parents and Information Branch (SPD4)
Department for Training and Education
Welsh Assembly Government
Cathays Park
CARDIFF CF10 3NQ**

**(029) 2082 6010 Fax (029) 2082 6016
email - education.training@wales.gsi.gov.uk
or visit our website - www.learning.wales.gov.uk**

Also available from the Welsh Assembly Government

**National Curriculum Assessment and Public Examination Results (for each LEA area) 2002, 2003 and 2004
National Curriculum Assessment Results in Wales: Key Stage 1 for 1997 to 2001
National Curriculum Assessment Results in Wales: Key Stage 2 for 1997 to 2001
National Curriculum Assessment Results in Wales: Key Stage 3 for 1997 to 2001
National Curriculum Assessment Results in Wales: Key Stage 3 non-core subjects for 2001
GCSE/GNVQ Results in Wales: 1997 – 2001
A/AS level and GNVQ results in Wales: 2001
Benchmark Information for Key Stage 1: 1997 – 2004
Benchmark Information for Key Stage 2: 1997-2003
Benchmark Information for Key Stages 3 & 4: 1997 - 2002
Benchmark Information for Key Stage 3: 2003 and 2004
Benchmark Information for Key Stage 4: 2003 and 2004**

Contents

	Page
Introduction	4
How to use the Benchmark Tables	6
All schools	
Table 1: Schools with up to 8 per cent eligible for FSM	8
Table 2: Schools with over 8 per cent and up to 16 per cent eligible for FSM	8
Table 3: Schools with over 16 per cent and up to 24 per cent eligible for FSM	9
Table 4: Schools with over 24 per cent and up to 32 per cent eligible for FSM	9
Table 5: Schools with over 33 per cent eligible for FSM	10
Table 6: All schools	10
Table 7: All schools - Summary Table	11
Welsh or partly Welsh medium schools	
Table 8: Schools with up to and including 8 per cent free school meals	12
Table 9: Schools with 9-16 per cent free school meals	12
Table 10: Schools with 17-24 per cent free school meals	13
Table 11: Schools with 25-32 per cent free school meals	13
Table 12: Schools with 33 per cent or more free school meals	14
Table 13: All schools	14
Table 14: All schools - Summary Table	15
English medium schools	
Table 15: Schools with up to and including 4 per cent free school meals	16
Table 16: Schools with 5-8 per cent free school meals	16
Table 17: Schools with 9-12 per cent free school meals	17
Table 18: Schools with 13-16 per cent free school meals	17
Table 19: Schools with 17-20 per cent free school meals	18
Table 20: Schools with 21-24 per cent free school meals	18
Table 21: Schools with 25-28 per cent free school meals	19
Table 22: Schools with 29-32 per cent free school meals	19
Table 23: Schools with 33-40 per cent free school meals	20
Table 24: Schools with 41-48 per cent free school meal	20
Table 25: Schools with 49 per cent or more free school meals	21
Table 26: All schools	21
Table 27: All schools - Summary Table	22
Performance Bands	
English	23
Welsh	24
Mathematics	25
Science	26
Core Subject Indicator	27

Introduction

This is the eighth year for which benchmark information has been published and it is hoped that schools and LEAs will use it to support their target setting processes. The tables displayed in this booklet are based on the results derived from the 2004 National Curriculum assessments.

The purpose of providing benchmark information is to show how well schools can do, whatever their circumstances. Benchmark Information brings together the results of similar schools into simple tables, which are ordered according to the proportion of children known to be eligible for free school meals (FSM). By looking at the tables, which have been extended for English-medium schools, schools can find out how well their results compare with similar schools.

The presentation of the benchmark information illustrates clearly the range of performance in each group of schools. Blank columns allow schools to enter their own results for different indicators i.e. the percentage of pupils attaining level 4 or above, or those achieving the Core Subject Indicator (CSI). The tables are based on the results from maintained schools.

For 2002 and 2003, the FSM percentage was based on pupils of all ages. For 2004, the FSM percentage is based on pupils of compulsory school age only.

The charts towards the back of the book show the number of schools in a range of performance bands for each subject and the Core Subject Indicator. The charts are based on the number of schools with more than five pupils eligible for assessment.

How to use the tables

Table 1: Schools with up to 8 per cent eligible for FSM

Percentage of pupils achieving level 4 or above

	Lower Quartile Chwarterel Isaf	Median Canolrif	Upper Quartile Chwarterel Uchaf
English/Saesneg			
Teacher Assessment Aseiad Athro	78	86	94
Test Prawf	80	90	100
Welsh/Cymraeg			
Teacher Assessment Aseiad Athro	71	88	100
Test Prawf	73	89	100
Mathematics/Mathemateg			
Teacher Assessment Aseiad Athro	77	87	94
Test Prawf	75	86	96
Science/Gwyddoniaeth			
Teacher Assessment Aseiad Athro	86	95	100
Test Prawf	90	97	100
Core Subject Indicator/Dangosydd Pynciau Craidd			
Teacher Assessment Aseiad Athro	73	83	92
Test Prawf	71	82	92

Number of schools/Nifer yr ysgolion = 378

School performance is in the bottom 25% (the lower quartile) of schools in the table.

School performance is in the top 50% (above the median) and below the best performing 25% (the upper quartile).

School performance is in the bottom 50% (below the median) of schools but above the lowest performing 25% (the lower quartile).

School is performing in the top 25% (the upper quartile).

Terms used in the tables

FSM: The percentage of pupils who are known to be eligible for free school meals is based on the January 2004 School Census Returns.

Lower Quartile: The performance below which 25 per cent of schools fall.

Median: The performance exceeded by 50 per cent of schools.

Upper Quartile: The performance exceeded by 25 per cent of schools.

Number of schools: The number of schools with results used in this table.

Core Subject Indicator: The percentage of pupils attaining at least level 4 in each of English or Welsh (first language), mathematics and science in combination, as determined by the Teacher Assessments and Tests.



Table 1: Schools with up to 8 per cent eligible for FSM

Tabl 1: Ysgolion sydd â hyd at 8 y cant o ddisgyblion â hawl i BYD

Percentage of pupils achieving level 4 or above/Canran y disgyblion yn cyrraedd lefel 4 neu'n uwch

	Lower Quartile Chwarterl Isaf	Median Canolrif	Upper Quartile Chwarterl Uchaf
English/Saesneg*			
Teacher Assessment Asesiad Athro	80	88	96
Test/Prawf	81	90	100
Welsh/Cymraeg**			
Teacher Assessment Asesiad Athro	73	86	100
Test/Prawf	75	90	100
Mathematics/Mathemateg			
Teacher Assessment Asesiad Athro	80	88	97
Test/Prawf	80	89	100
Science/Gwyddoniaeth			
Teacher Assessment Asesiad Athro	88	95	100
Test/Prawf	90	98	100
Core Subject Indicator/Dangosydd Pynciau Craidd			
Teacher Assessment Asesiad Athro	74	83	93
Test/Prawf	74	86	95

Number of schools/Nifer yr ysgolion = 390*, 164**

Table 2: Schools with over 8 per cent and up to 16 per cent eligible for FSM

Tabl 2: Ysgolion sydd â dros 8 y cant, a hyd at 16 y cant o ddisgyblion â hawl i BYD

Percentage of pupils achieving level 4 or above/Canran y disgyblion yn cyrraedd lefel 4 neu'n uwch

	Lower Quartile Chwarterl Isaf	Median Canolrif	Upper Quartile Chwarterl Uchaf
English/Saesneg*			
Teacher Assessment Asesiad Athro	72	82	89
Test/Prawf	75	85	92
Welsh/Cymraeg**			
Teacher Assessment Asesiad Athro	67	80	94
Test/Prawf	70	84	100
Mathematics/Mathemateg			
Teacher Assessment Asesiad Athro	73	83	91
Test/Prawf	75	85	93
Science/Gwyddoniaeth			
Teacher Assessment Asesiad Athro	85	92	100
Test/Prawf	88	95	100
Core Subject Indicator/Dangosydd Pynciau Craidd			
Teacher Assessment Asesiad Athro	67	77	86
Test/Prawf	69	79	89

Number of schools/Nifer yr ysgolion = 350*, 150**



Table 5: Schools with over 33 per cent or more eligible for FSM

Tabl 5: Ysgolion sydd â dros 33 y can o ddisgyblion â hawl i BYD

Percentage of pupils achieving level 4 or above/Canran y disgyblion yn cyrraedd lefel 4 neu'n uwch

	Lower Quartile Chwartel Isaf	Median Canolrif	Upper Quartile Chwartel Uchaf
English/Saesneg*			
Teacher Assessment Asesiad Athro	55	64	74
Test/Prawf	56	68	79
Welsh/Cymraeg**			
Teacher Assessment Asesiad Athro	44	67	75
Test/Prawf	56	67	78
Mathematics/Mathemateg			
Teacher Assessment Asesiad Athro	59	68	77
Test/Prawf	57	69	79
Science/Gwyddoniaeth			
Teacher Assessment Asesiad Athro	68	79	88
Test/Prawf	74	83	94
Core Subject Indicator/Dangosydd Pynciau Craidd			
Teacher Assessment Asesiad Athro	49	60	69
Test/Prawf	49	58	71

Number of schools/Nifer yr ysgolion = 238*, 24**

Table 6: All Key Stage 2 schools

Tabl 6: Pob ysgol Cyfnod Allweddol 2

Percentage of pupils achieving level 4 or above/Canran y disgyblion yn cyrraedd lefel 4 neu'n uwch

	Lower Quartile Chwartel Isaf	Median Canolrif	Upper Quartile Chwartel Uchaf
English/Saesneg*			
Teacher Assessment Asesiad Athro	68	79	88
Test/Prawf	71	82	92
Welsh/Cymraeg**			
Teacher Assessment Asesiad Athro	67	80	94
Test/Prawf	69	83	100
Mathematics/Mathemateg			
Teacher Assessment Asesiad Athro	70	80	90
Test/Prawf	71	82	91
Science/Gwyddoniaeth			
Teacher Assessment Asesiad Athro	81	90	100
Test/Prawf	85	93	100
Core Subject Indicator/Dangosydd Pynciau Craidd			
Teacher Assessment Asesiad Athro	64	75	85
Test/Prawf	63	75	87

Number of schools/Nifer yr ysgolion = 1404*, 473**

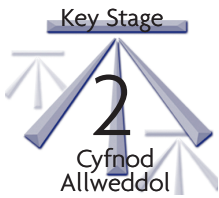


Table 8: Welsh or partly Welsh-medium schools with up to 8 per cent FSM

Tabl 8: Ysgolion Cymraeg neu rannol Gymraeg â hyd at 8 y cant PYD

Percentage of pupils achieving level 4 or above/Canran y disgyblion yn cyrraedd lefel 4 neu'n uwch

	Lower Quartile Chwartzel Isaf	Median Canolrif	Upper Quartile Chwartzel Uchaf
English/Saesneg			
Teacher Assessment Asesiad Athro	73	86	100
Test/Prawf	78	89	100
Welsh/Cymraeg			
Teacher Assessment Asesiad Athro	73	86	100
Test/Prawf	75	90	100
Mathematics/Mathemateg			
Teacher Assessment Asesiad Athro	78	88	100
Test/Prawf	80	90	100
Science/Gwyddoniaeth			
Teacher Assessment Asesiad Athro	85	93	100
Test/Prawf	87	100	100
Core Subject Indicator/Dangosydd Pynciau Craidd			
Teacher Assessment Asesiad Athro	69	83	98
Test/Prawf	73	86	100

Number of schools/Nifer yr ysgolion = 168*, 163**

Table 9: Welsh or partly Welsh-medium schools with 9-16 per cent FSM

Tabl 9: Ysgolion Cymraeg neu rannol Gymraeg â 9-16 y cant PYD

Percentage of pupils achieving level 4 or above/Canran y disgyblion yn cyrraedd lefel 4 neu'n uwch

	Lower Quartile Chwartzel Isaf	Median Canolrif	Upper Quartile Chwartzel Uchaf
English/Saesneg			
Teacher Assessment Asesiad Athro	71	80	90
Test/Prawf	73	83	94
Welsh/Cymraeg			
Teacher Assessment Asesiad Athro	67	80	94
Test/Prawf	70	84	100
Mathematics/Mathemateg			
Teacher Assessment Asesiad Athro	70	85	93
Test/Prawf	72	87	97
Science/Gwyddoniaeth			
Teacher Assessment Asesiad Athro	80	90	100
Test/Prawf	86	94	100
Core Subject Indicator/Dangosydd Pynciau Craidd			
Teacher Assessment Asesiad Athro	67	76	88
Test/Prawf	67	80	90

Number of schools/Nifer yr ysgolion = 158*, 148**



Table 12: All Welsh or partly Welsh-medium schools with 33 per cent or more FSM

Tabl 12: Ysgolion Cymraeg neu rannol Gymraeg â 33 y cant neu ragor PYD

Percentage of pupils achieving level 4 or above/Canran y disgyblion yn cyrraedd lefel 4 neu'n uwch

	Lower Quartile Chwartel Isaf	Median Canolrif	Upper Quartile Chwartel Uchaf
English/Saesneg*			
Teacher Assessment Aseiad Athro	56	68	79
Test/Prawf	54	67	87
Welsh/Cymraeg**			
Teacher Assessment Aseiad Athro	44	67	75
Test/Prawf	56	67	78
Mathematics/Mathemateg			
Teacher Assessment Aseiad Athro	55	70	87
Test/Prawf	57	75	84
Science/Gwyddoniaeth			
Teacher Assessment Aseiad Athro	60	76	92
Test/Prawf	67	77	98
Core Subject Indicator/Dangosydd Pynciau Craidd			
Teacher Assessment Aseiad Athro	49	63	77
Test/Prawf	47	61	79

Number of schools/Nifer yr ysgolion = 26*, 24**

Table 13: All Welsh or partly Welsh-medium Key Stage 2 schools

Tabl 13: Ysgolion Cymraeg neu rannol Gymraeg Cyfnod Allweddol 2

Percentage of pupils achieving level 4 or above/Canran y disgyblion yn cyrraedd lefel 4 neu'n uwch

	Lower Quartile Chwartel Isaf	Median Canolrif	Upper Quartile Chwartel Uchaf
English/Saesneg*			
Teacher Assessment Aseiad Athro	69	80	92
Test/Prawf	74	85	100
Welsh/Cymraeg**			
Teacher Assessment Aseiad Athro	67	80	94
Test/Prawf	69	83	100
Mathematics/Mathemateg			
Teacher Assessment Aseiad Athro	71	83	96
Test/Prawf	73	85	100
Science/Gwyddoniaeth			
Teacher Assessment Aseiad Athro	79	90	100
Test/Prawf	83	94	100
Core Subject Indicator/Dangosydd Pynciau Craidd			
Teacher Assessment Aseiad Athro	67	78	89
Test/Prawf	67	80	93

Number of schools/Nifer yr ysgolion = 490*, 468**

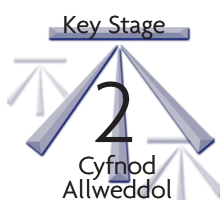


Table 15: English-medium schools with up to 4 per cent FSM

Tabl 15: Ysgolion Saesneg â hyd at 4 y cant PYD

Percentage of pupils achieving level 4 or above/Canran y disgyblion yn cyrraedd lefel 4 neu'n uwch

English/Saesneg	Lower Quartile Chwartel Isaf	Median Canolrif	Upper Quartile Chwartel Uchaf
Teacher Assessment Aseiad Athro	83	91	98
Test/Prawf	86	93	100
Mathematics/Mathemateg			
Teacher Assessment Aseiad Athro	81	90	96
Test/Prawf	82	90	96
Science/Gwyddoniaeth			
Teacher Assessment Aseiad Athro	92	98	100
Test/Prawf	95	100	100
Core Subject Indicator/Dangosydd Pynciau Craidd			
Teacher Assessment Aseiad Athro	75	86	94
Test/Prawf	77	88	94

Number of schools/Nifer yr ysgolion = 102*

Table 16: English-medium schools with 5-8 per cent FSM

Tabl 16: Ysgolion Saesneg â 5-8 y cant PYD

Percentage of pupils achieving level 4 or above/Canran y disgyblion yn cyrraedd lefel 4 neu'n uwch

English/Saesneg	Lower Quartile Chwartel Isaf	Median Canolrif	Upper Quartile Chwartel Uchaf
Teacher Assessment Aseiad Athro	81	86	92
Test/Prawf	82	88	94
Mathematics/Mathemateg			
Teacher Assessment Aseiad Athro	80	87	93
Test/Prawf	79	88	96
Science/Gwyddoniaeth			
Teacher Assessment Aseiad Athro	87	94	100
Test/Prawf	89	96	100
Core Subject Indicator/Dangosydd Pynciau Craidd			
Teacher Assessment Aseiad Athro	74	83	89
Test/Prawf	73	82	90

Number of schools/Nifer yr ysgolion = 120*

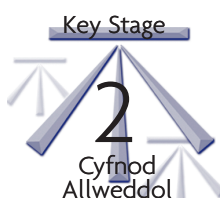


Table 19: English-medium schools with 17-20 per cent FSM

Tabl 19: Ysgolion Saesneg â 17-20 y cant PYD

Percentage of pupils achieving level 4 or above/Canran y disgyblion yn cyrraedd lefel 4 neu'n uwch

English/Saesneg		Lower Quartile Chwartel Isaf		Median Canolrif		Upper Quartile Chwartel Uchaf	
Teacher Assessment Asesiad Athro		71		80		88	
Test/Prawf		74		82		89	
Mathematics/Mathemateg							
Teacher Assessment Asesiad Athro		73		80		91	
Test/Prawf		73		81		89	
Science/Gwyddoniaeth							
Teacher Assessment Asesiad Athro		84		90		98	
Test/Prawf		88		93		100	
Core Subject Indicator/Dangosydd Pynciau Craidd							
Teacher Assessment Asesiad Athro		65		74		83	
Test/Prawf		65		74		84	

Number of schools/Nifer yr ysgolion = 87*

Table 20: English-medium schools with 21-24 per cent FSM

Tabl 20: Ysgolion Saesneg â 21-24 y cant PYD

Percentage of pupils achieving level 4 or above/Canran y disgyblion yn cyrraedd lefel 4 neu'n uwch

English/Saesneg		Lower Quartile Chwartel Isaf		Median Canolrif		Upper Quartile Chwartel Uchaf	
Teacher Assessment Asesiad Athro		66		75		82	
Test/Prawf		68		77		85	
Mathematics/Mathemateg							
Teacher Assessment Asesiad Athro		69		76		83	
Test/Prawf		69		77		85	
Science/Gwyddoniaeth							
Teacher Assessment Asesiad Athro		81		88		95	
Test/Prawf		85		90		96	
Core Subject Indicator/Dangosydd Pynciau Craidd							
Teacher Assessment Asesiad Athro		63		70		77	
Test/Prawf		59		68		78	

Number of schools/Nifer yr ysgolion = 77*



Table 23: English-medium schools with 33-40 per cent FSM

Tabl 23: Ysgolion Saesneg â 33-40 y cant PYD

Percentage of pupils achieving level 4 or above/Canran y disgyblion yn cyrraedd lefel 4 neu'n uwch

English/Saesneg		Lower Quartile Chwartel Isaf		Median Canolrif		Upper Quartile Chwartel Uchaf	
Teacher Assessment Asesiad Athro		63		70		77	
Test/Prawf		65		73		81	
Mathematics/Mathemateg							
Teacher Assessment Asesiad Athro		66		73		80	
Test/Prawf		63		74		81	
Science/Gwyddoniaeth							
Teacher Assessment Asesiad Athro		75		83		92	
Test/Prawf		81		88		96	
Core Subject Indicator/Dangosydd Pynciau Craidd							
Teacher Assessment Asesiad Athro		55		64		74	
Test/Prawf		54		66		76	

Number of schools/Nifer yr ysgolion = 76*

Table 24: English-medium schools with 41-48 per cent FSM

Tabl 24: Ysgolion Saesneg â 41-48 y cant PYD

Percentage of pupils achieving level 4 or above/Canran y disgyblion yn cyrraedd lefel 4 neu'n uwch

English/Saesneg		Lower Quartile Chwartel Isaf		Median Canolrif		Upper Quartile Chwartel Uchaf	
Teacher Assessment Asesiad Athro		55		67		78	
Test/Prawf		60		69		83	
Mathematics/Mathemateg							
Teacher Assessment Asesiad Athro		62		69		78	
Test/Prawf		63		70		80	
Science/Gwyddoniaeth							
Teacher Assessment Asesiad Athro		71		81		87	
Test/Prawf		77		85		94	
Core Subject Indicator/Dangosydd Pynciau Craidd							
Teacher Assessment Asesiad Athro		50		63		71	
Test/Prawf		52		59		73	

Number of schools/Nifer yr ysgolion = 66*

Table 27: All English-medium Schools - Summary Table
Table 27: Ysgolion Saesneg - Tabl crynodeb

Percentage of pupils achieving level 4 or above/Canran y disgyblion yn cyrraedd lefel 4 neu'n uwch

FSM Band/Band PYD											
Up to 4 per cent Hyd at 4 y cant	5-8	9-12	13-16	17-20	21-24	25-28	29-32	33-40	41-48 or more	49 per cent Pob ysgol 49 y cant neu ragor	All Schools Pob ysgol

English/Saesneg

Teacher Assessment
 Asesiad Athro
 Test/Prawf

90	86	82	80	79	75	75	72	69	67	55	76
92	87	86	82	81	76	77	72	73	69	57	79

Mathematics/Mathemateg

Teacher Assessment
 Asesiad Athro
 Test/Prawf

89	86	82	81	80	76	76	74	72	69	59	78
90	86	84	82	79	76	77	74	72	70	60	78

Science/Gwyddoniaeth

Teacher Assessment
 Asesiad Athro
 Test/Prawf

96	93	93	89	89	87	86	86	82	79	72	87
97	94	95	92	91	89	90	88	87	84	78	90

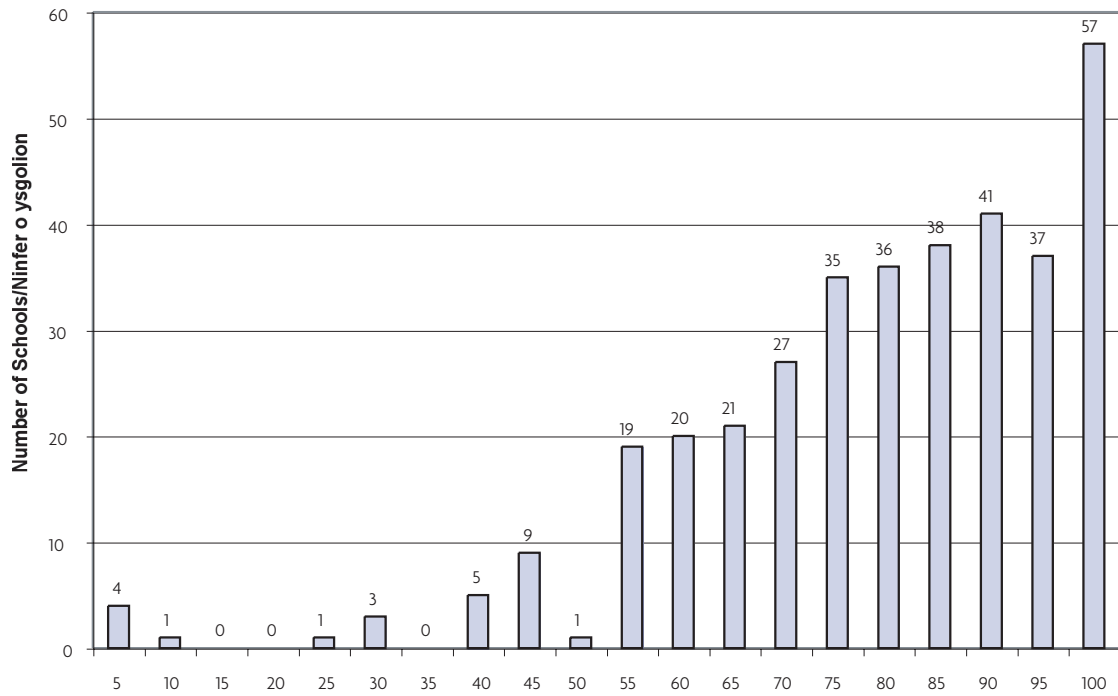
Core Subject Indicator /Dangosydd Pynciau Craidd

Teacher Assessment
 Asesiad Athro
 Test/Prawf

86	81	77	75	74	70	70	67	64	61	49	71
87	81	79	76	74	68	70	65	64	61	49	71

Welsh/Cymraeg

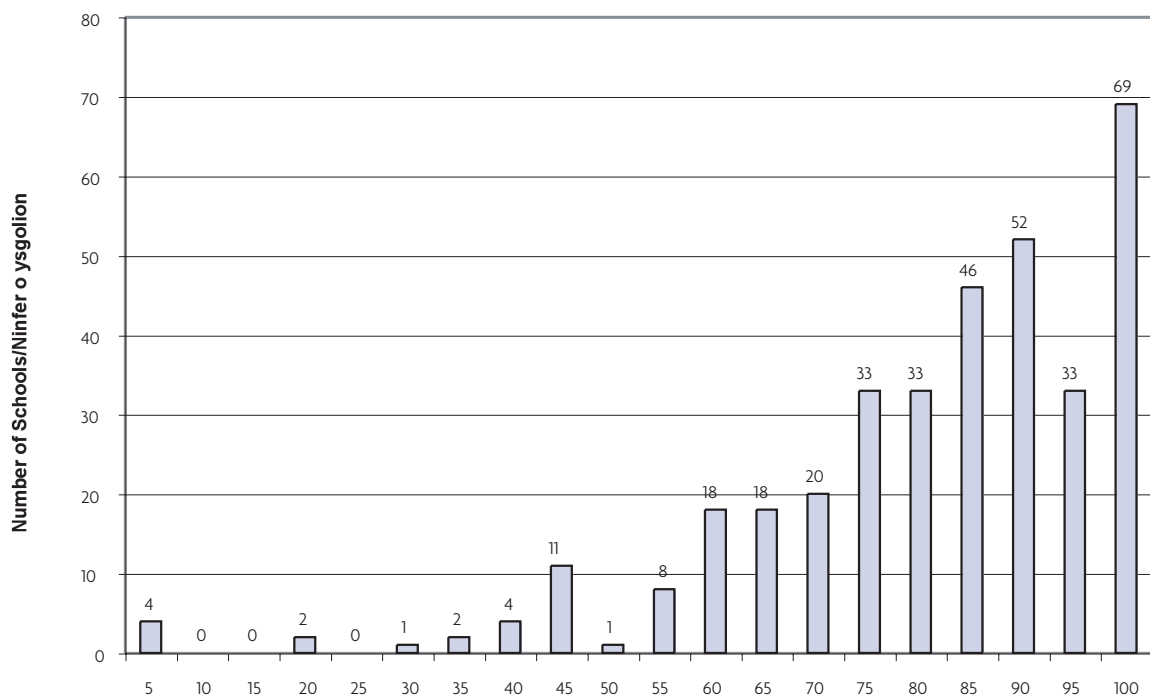
Teacher Assessments/Aseidiadau Athrawon



Per cent at level 4 or above/canran ar lefel 4 neu'n uwch

Welsh/Cymraeg

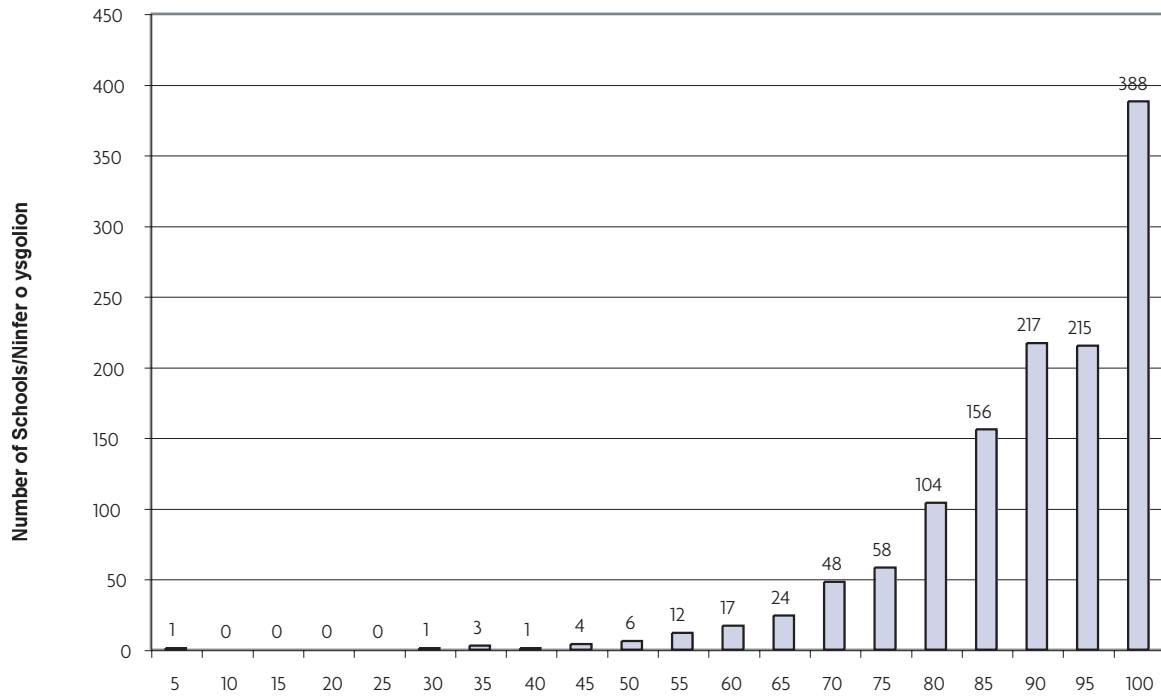
Tests/Profion



Per cent at level 4 or above/canran ar lefel 4 neu'n uwch

Science/Gwyddoniaeth

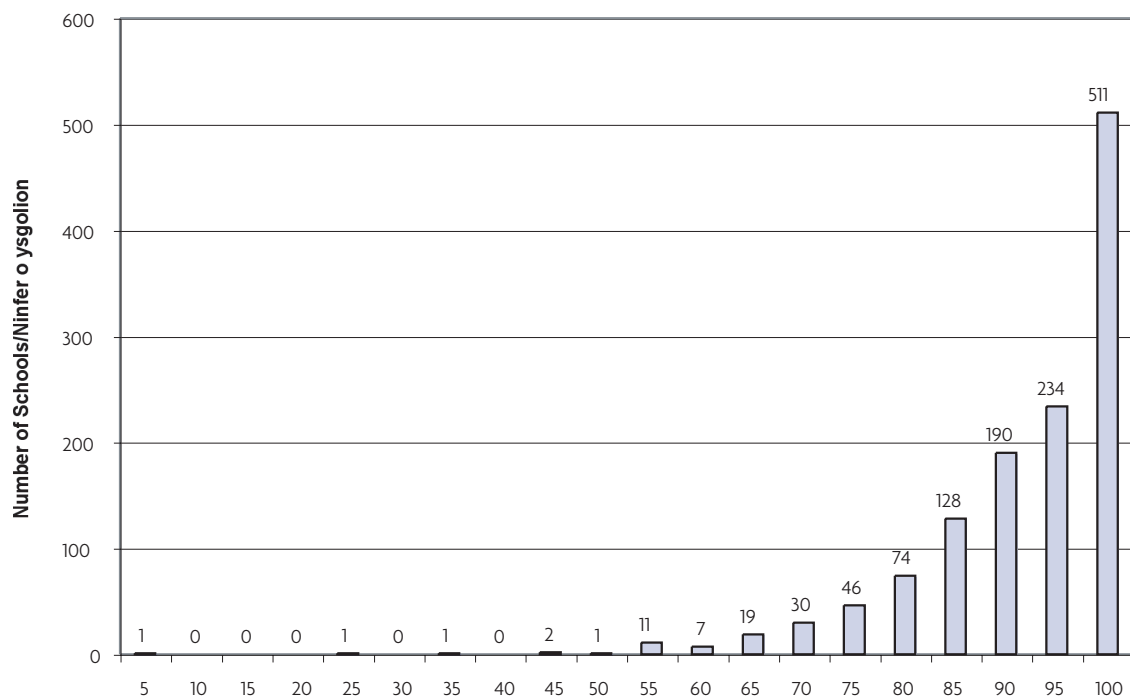
Teacher Assessments/Aseidiadau Athrawon



Per cent at level 4 or above/canran ar lefel 4 neu'n uwch

Science/Gwyddoniaeth

Tests/Profion



Per cent at level 4 or above/canran ar lefel 4 neu'n uwch

Notes

Nodiau

