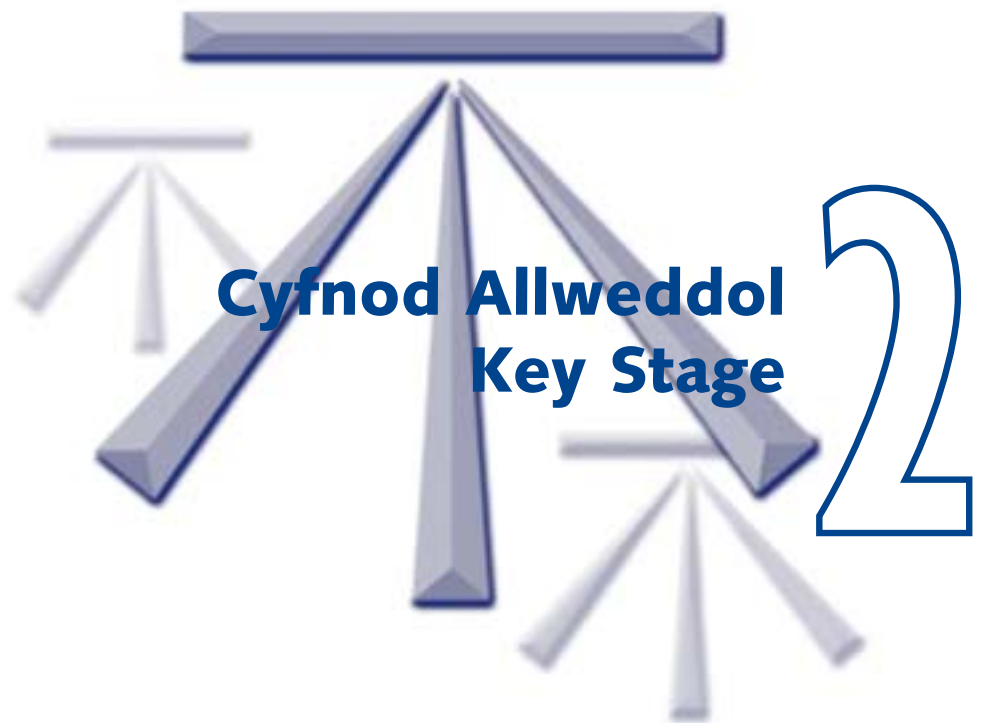


Dogfen Wybodaeth AHA rhif:  
DFTE Information Document No: 047-03

Dyddiad Argraffu: Tachwedd 2003  
Date of Issue: November 2003

## Gwybodaeth Feincnodi



Cyfnod Allweddol  
Key Stage

2

## Benchmark Information

## **Benchmark Information for Key Stage 2: 2003**

**Audience: Headteachers, Governing Bodies and Directors of Education**

Further copies of this booklet and those listed below may be obtained from:

**Parents and Information Branch (SPD4)  
Department for Training and Education  
Welsh Assembly Government  
Cathays Park  
CARDIFF CF10 3NQ**

**(029) 2082 6010 Fax (029) 2082 6016  
email - [education.training@wales.gsi.gov.uk](mailto:education.training@wales.gsi.gov.uk)  
or visit our website - [www.learning.wales.gov.uk](http://www.learning.wales.gov.uk)**

**Also available from the Welsh Assembly Government**

**National Curriculum Assessment and Public Examination Results (for each LEA area) 2002 and 2003  
National Curriculum Assessment Results in Wales: Key Stage 1 for 1997 to 2001  
National Curriculum Assessment Results in Wales: Key Stage 2 for 1997 to 2001  
National Curriculum Assessment Results in Wales: Key Stage 3 for 1997 to 2001  
National Curriculum Assessment Results in Wales: Key Stage 3 non-core subjects for 2001  
GCSE/GNVQ Results in Wales: 1997 – 2001  
A/AS level and GNVQ results in Wales: 2001  
Benchmark Information for Key Stage 1: 1997 – 2002  
Benchmark Information for Key Stage 2: 1997-2003  
Benchmark Information for Key Stages 3 & 4: 1997 - 2002  
Benchmark Information for Key Stage 3: 2003  
Benchmark Information for Key Stage 4: 2003**

## **Gwybodaeth Feincodi ar gyfer Cyfnod Allweddol 2: 2003**

**Y Gynulleidfa: Prifathrawon, Cyrff Llywodraethol a Chyfarwyddwyr Addysg**

Gellir cael ragor o gopiau o'r llyfryn yma ac y rhai sydd wedi ei rhestru isod wrth:

**Y Gangen Rhieni A Gwybodaeth (SPD4)  
Adran Hyfforddiant ac Addysg  
Llywodraeth Cynulliad Cymru  
Parc Cathays  
CAERDYDD CF10 3NQ**

**(029) 2082 6010 Ffacs (029) 2082 6016  
e-bost : [education.training@wales.gsi.gov.uk](mailto:education.training@wales.gsi.gov.uk)  
neu ymweld ein wefan – [www.dysgu.cymru.gov.uk](http://www.dysgu.cymru.gov.uk)**

**Hefyd a'r gael o Llywodraeth Cynulliad Cymru**

**Canlyniadau'r Asesiad Cwricwlwm Cenedlaethol a Arholiadau Cyhoeddus (am bob ardal AAll) 2002 a 2003**  
**Canlyniadau Asesiadau'r Cwricwlwm Cenedlaethol yng Nghymru: Cyfnod Allweddol 1 ar gyfer 1997 i 2001**  
**Canlyniadau Asesiadau'r Cwricwlwm Cenedlaethol yng Nghymru: Cyfnod Allweddol 2 ar gyfer 1997 i 2001**  
**Canlyniadau Asesiadau'r Cwricwlwm Cenedlaethol yng Nghymru: Cyfnod Allweddol 3 ar gyfer 1997 i 2001**  
**Canlyniadau Asesiadau'r Cwricwlwm Cenedlaethol yng Nghymru: Cyfnod Allweddol 3 pynciau di-graidd ar gyfer 1997 i 2001**  
**Canlyniadau TGAU/CGCC yng Nghymru: 1997 – 2001**  
**Canlyniadau Safon U/UG a CGCC yng Nghymru: 2001**  
**Gwybodaeth Feincodi ar gyfer Cyfnod Allweddol 1: 1997-2002**  
**Gwybodaeth Feincodi ar gyfer Cyfnod Allweddol 2: 1997-2003**  
**Gwybodaeth Feincodi ar gyfer Cyfnodau Allweddol 3 & 4: 1997-2002**  
**Gwybodaeth Feincodi ar gyfer Cyfnodau Allweddol 3: 2003**  
**Gwybodaeth Feincodi ar gyfer Cyfnodau Allweddol 4: 2003**

# Contents

---

	Page
<b>Introduction</b>	<b>4</b>
<b>How to use the Benchmark Tables</b>	<b>6</b>
<b>All schools</b>	
<b>Table 1:</b> Schools with up to and including 8 per cent free school meals	<b>8</b>
<b>Table 2:</b> Schools with 9-16 per cent free school meals	<b>8</b>
<b>Table 3:</b> Schools with 17-24 per cent free school meal	<b>9</b>
<b>Table 4:</b> Schools with 25-32 per cent free school meals	<b>9</b>
<b>Table 5:</b> Schools with 33 per cent or more free school meals	<b>10</b>
<b>Table 6:</b> All schools	<b>10</b>
<b>Table 7:</b> All schools - Summary Table	<b>11</b>
<b>Welsh or partly Welsh medium schools</b>	
<b>Table 8:</b> Schools with up to and including 8 per cent free school meals	<b>12</b>
<b>Table 9:</b> Schools with 9-16 per cent free school meals	<b>12</b>
<b>Table 10:</b> Schools with 17-24 per cent free school meals	<b>13</b>
<b>Table 11:</b> Schools with 25-32 per cent free school meals	<b>13</b>
<b>Table 12:</b> Schools with 33 per cent or more free school meals	<b>14</b>
<b>Table 13:</b> All schools	<b>14</b>
<b>Table 14:</b> All schools - Summary Table	<b>15</b>
<b>English medium schools</b>	
<b>Table 15:</b> Schools with up to and including 4 per cent free school meals	<b>16</b>
<b>Table 16:</b> Schools with 5-8 per cent free school meals	<b>16</b>
<b>Table 17:</b> Schools with 9-12 per cent free school meals	<b>17</b>
<b>Table 18:</b> Schools with 13-16 per cent free school meals	<b>17</b>
<b>Table 19:</b> Schools with 17-20 per cent free school meals	<b>18</b>
<b>Table 20:</b> Schools with 21-24 per cent free school meals	<b>18</b>
<b>Table 21:</b> Schools with 25-28 per cent free school meals	<b>19</b>
<b>Table 22:</b> Schools with 29-32 per cent free school meals	<b>19</b>
<b>Table 23:</b> Schools with 33-40 per cent free school meals	<b>20</b>
<b>Table 24:</b> Schools with 41-48 per cent free school meal	<b>20</b>
<b>Table 25:</b> Schools with 49 per cent or more free school meals	<b>21</b>
<b>Table 26:</b> All schools	<b>21</b>
<b>Table 27:</b> All schools - Summary Table	<b>22</b>
<b>Performance Bands</b>	
English	<b>23</b>
Welsh	<b>24</b>
Mathematics	<b>25</b>
Science	<b>26</b>
Core Subject Indicator	<b>27</b>

	<b>Tudalen</b>
<b>Cyflwyniad</b>	<b>5</b>
<b>Sut i ddefnyddio'r Tablau Meincnodi</b>	<b>7</b>
<b>Pob Ysgol</b>	
<b>Tabl 1:</b> Ysgolion â hyd at, a chan gynnwys, 8 y cant prydau ysgol di-dâl	<b>8</b>
<b>Tabl 2:</b> Ysgolion â 9 i 16 y cant prydau ysgol di-dâl	<b>8</b>
<b>Tabl 3:</b> Ysgolion â 17 i 24 y cant prydau ysgol di-dâl	<b>9</b>
<b>Tabl 4:</b> Ysgolion â 25 i 32 y cant prydau ysgol di-dâl	<b>9</b>
<b>Tabl 5:</b> Ysgolion â 33 y cant neu ragor prydau ysgol di-dâl	<b>10</b>
<b>Tabl 6:</b> Pob ysgol	<b>10</b>
<b>Tabl 7:</b> Pob ysgol - Tabl Crynodeb	<b>11</b>
<b>Ysgolion Cymraeg neu rannol Gymraeg</b>	
<b>Tabl 8:</b> Ysgolion â hyd at, a chan gynnwys, 8 y cant prydau ysgol di-dâl	<b>12</b>
<b>Tabl 9:</b> Ysgolion â 9 i 16 y cant prydau ysgol di-dâl	<b>12</b>
<b>Tabl 10:</b> Ysgolion â 17 i 24 y cant prydau ysgol di-dâl	<b>13</b>
<b>Tabl 11:</b> Ysgolion â 25 i 32 y cant prydau ysgol di-dâl	<b>13</b>
<b>Tabl 12:</b> Ysgolion â 33 y cant neu ragor prydau ysgol di-dâl	<b>14</b>
<b>Tabl 13:</b> Pob ysgol	<b>14</b>
<b>Tabl 14:</b> Pob ysgol - Tabl Crynodeb	<b>15</b>
<b>Ysgolion Saesneg</b>	
<b>Tabl 15:</b> Ysgolion â hyd at, a chan gynnwys, 4 y cant prydau ysgol di-dâl	<b>16</b>
<b>Tabl 16:</b> Ysgolion â 5 i 8 y cant prydau ysgol di-dâl	<b>16</b>
<b>Tabl 17:</b> Ysgolion â 9 i 12 y cant prydau ysgol di-dâl	<b>17</b>
<b>Tabl 18:</b> Ysgolion â 13 i 16 y cant prydau ysgol di-dâl	<b>17</b>
<b>Tabl 19:</b> Ysgolion â 17 i 20 y cant prydau ysgol di-dâl	<b>18</b>
<b>Tabl 20:</b> Ysgolion â 21 i 24 y cant prydau ysgol di-dâl	<b>18</b>
<b>Tabl 21:</b> Ysgolion â 25 i 28 y cant prydau ysgol di-dâl	<b>19</b>
<b>Tabl 22:</b> Ysgolion â 29 i 32 y cant prydau ysgol di-dâl	<b>19</b>
<b>Tabl 23:</b> Ysgolion â 33 i 40 y cant prydau ysgol di-dâl	<b>20</b>
<b>Tabl 24:</b> Ysgolion â 41 i 48 y cant prydau ysgol di-dâl	<b>20</b>
<b>Tabl 25:</b> Ysgolion â 49 y cant neu ragor prydau ysgol di-dâl	<b>21</b>
<b>Tabl 26:</b> Pob ysgol	<b>21</b>
<b>Tabl 27:</b> Pob ysgol - Tabl Crynodeb	<b>22</b>
<b>Bandiau Perfformiad</b>	
Saesneg	<b>23</b>
Cymraeg	<b>24</b>
Mathemateg	<b>25</b>
Gwyddoniaeth	<b>26</b>
Dangosydd Pynciau Craidd	<b>27</b>

# Introduction

---

This is the seventh year for which benchmark information has been published and it is hoped that schools and LEAs will use it to support their target setting processes. The tables displayed in this booklet are based on the results derived from the 2003 National Curriculum assessments.

The purpose of providing benchmark information is to show how well schools can do, whatever their circumstances. Benchmark Information brings together the results of similar schools into simple tables, which are ordered according to the proportion of children known to be eligible for free school meals (FSM). By looking at the tables, which have been extended for English-medium schools, schools can find out how well their results compare with similar schools.

The presentation of the benchmark information illustrates clearly the range of performance in each group of schools. Blank columns allow schools to enter their own results for different indicators i.e. the percentage of pupils attaining level 4 or above, or those achieving the Core Subject Indicator (CSI). The tables are based on the results from maintained schools.

The charts towards the back of the book show the number of schools in a range of performance bands for each subject and the Core Subject Indicator. The charts are based on the number of schools with more than five pupils eligible for assessment.

# Cyflwyniad

---

Dyma'r seithfed flwyddyn y mae'r wybodaeth feincnodi wedi'i chyhoeddi, a'r gobaith yw y bydd ysgolion ac AALLau yn ei defnyddio i'w helpu gyda'u prosesau gosod targedau. Mae'r tablau sydd yn y llyfr hwn wedi'u seilio ar y canlyniadau sy'n deillio o asesiadau o dan y Cwricwlwm Cenedlaethol yn 2003.

Diben rhoi gwybodaeth feincnodi yw dangos cystal gwaith y gall ysgolion ei gyflawni, beth bynnag y bo'u hamgylchiadau. Mae Gwybodaeth Feincnodi yn dwyn ynghyd ganlyniadau ysgolion tebyg ac yn eu rhoi mewn tablau syml sydd wedi'u trefnu yn ôl nifer y plant y gwyddys eu bod yn gymwys i gael pryd ysgol am ddim (PYD). Drwy edrych ar y tablau, sydd bellach yn cynnwys ysgolion cyfrwng-Saesneg, gall ysgolion weld sut mae eu canlyniadau'n cymharu ag ysgolion tebyg.

Mae'r ffordd y mae'r wybodaeth feincnodi wedi'i chyflwyno yn dangos yn glir sut mae perfformiad pob grŵp o ysgolion yn amrywio. Mae'r colofnau gwag yn caniatâu i ysgolion gofnodi eu canlyniadau eu hunain ar gyfer y gwahanol ddangosyddion h.y. canran y disgyblion sy'n cyrraedd lefel 4 neu uwch, neu'r rhai sy'n cyflawni'r Dangosydd Pynciau Craidd. Mae'r canlyniadau wedi'u seilio ar ganlyniadau ysgolion a gynhelir.

Mae'r siartiau tua cefn y llyfr yn dangos nifer yr ysgolion sydd mewn ystod o fandiau perfformiad ar gyfer pob pwnc ac ar gyfer y Dangosydd Pynciau Craidd. Mae'r siartiau wedi'u seilio ar nifer yr ysgolion lle mae mwy na phum disgybl sy'n gymwys i'w hasesu.

# How to use the tables

**Table 1: Schools with up to 8 per cent eligible for FSM**

Percentage of pupils achieving level 4 or above

	Lower Quartile Chwartert Isaf	Median Canolrif	Upper Quartile Chwartert Uchaf
<b>English/Saesneg</b>			
Teacher Assessment Asesiad Athro	78	87	94
Test Prawf	80	90	100
<b>Welsh/Cymraeg</b>			
Teacher Assessment Asesiad Athro	71	88	100
Test Prawf	73	89	100
<b>Mathematics/Mathemateg</b>			
Teacher Assessment Asesiad Athro	77	87	94
Test Prawf	75	86	97
<b>Science/Gwyddoniaeth</b>			
Teacher Assessment Asesiad Athro	86	95	100
Test Prawf	90	97	100
<b>Core Subject Indicator/Dangosydd Pynciau Craidd</b>			
Teacher Assessment Asesiad Athro	73	83	92
Test Prawf	71	82	92

**Number of schools/Nifer yr ysgolion = 378**

School performance is in the bottom 25% (the lower quartile) of schools in the table.

School performance is in the top 50% (above the median) and below the best performing 25% (the upper quartile).

School performance is in the bottom 50% (below the median) of schools but above the lowest performing 25% (the lower quartile).

School is performing in the top 25% (the upper quartile).

## Terms used in the tables

**FSM:** The percentage of pupils who are known to be eligible for free school meals is based on the January 2003 School Census Returns.

**Lower Quartile:** The performance below which 25 per cent of schools fall.

**Median:** The performance exceeded by 50 per cent of schools.

**Upper Quartile:** The performance exceeded by 25 per cent of schools.

**Number of schools:** The number of schools with results used in this table.

**Core Subject Indicator:** The percentage of pupils attaining at least level 4 in each of English or Welsh (first language), mathematics and science in combination, as determined by the Teacher Assessments and Tests.



# Sut i ddefnyddio'r tablau



**Tabl 1: Ysgolion â hyd at 8 y cant yn gymwys i gael PYD**

Canran y disgyblion yn cyrraedd lefel 4 neu uwch

Saesneg/English	Chwarterel Isaf Lower Quartile	Canolrif Median	Chwarterel Uchaf Upper Quartile
<b>Saesneg/English</b>			
Asesiad Athro Teacher Assessment	78	86	94
Prawf Test	80	90	100
<b>Cymraeg/Welsh</b>			
Asesiad Athro Teacher Assessment	71	88	100
Prawf Test	73	89	100
<b>Mathemateg/Mathematics</b>			
Asesiad Athro Teacher Assessment	77	87	94
Prawf Test	75	86	96
<b>Gwyddoniaeth/Science</b>			
Asesiad Athro Teacher Assessment	86	95	100
Prawf Test	90	97	100
<b>Dangosydd Pynciau Craidd/Core Subject Indicator</b>			
Asesiad Athro Teacher Assessment	73	83	92
Prawf Test	71	82	92

**Nifer yr ysgolion/Number of schools = 378**

Perfformiad Ysgol yn y 25% isaf (y chwarterel isaf) o ysgolion yn y tabl.

Perfformiad ysgol yn y 50% uchaf (uwchlaw'r canolrif ac islaw'r 25% sy'n perfformio orau (y chwarterel uchaf)

Perfformiad ysgol yn y 50% isaf (islaw'r canolrif) o ysgolion ond uwchlaw'r 25% isaf eu perfformiad (chwarterel isaf)

Ysgol yn perfformio yn y 25% uchaf (y chwarterel uchaf)

## Termau a ddefnyddir yn y tablau

**PYD:** Canran y disgyblion y gwyddys eu bod yn gymwys i gael prydau ysgol am ddim wedi ei seilio ar Ffurflenni Cyfrifiad Ysgolion Ionawr 2003.

**Chwarterel Isaf:** Y perfformiad y mae 25 y cant o ysgolion yn cwmpo'n is nag ef.

**Canolrif:** Y perfformiad y mae 50 y cant o ysgolion yn gwneud yn well nag ef.

**Chwarterel Uchaf:** Y perfformiad y mae 25 y cant o ysgolion yn gwneud yn well nag ef.

**Nifer yr ysgolion:** Nifer yr ysgolion â chanlyniadau wedi'u defnyddio yn y tabl.

**Dangosydd Pynciau Craidd:** Canran y disgyblion yn cyrraedd o leiaf lefel 4 mewn Cymraeg (iaith gyntaf) neu Saesneg, mathemateg a gwyddoniaeth mewn cyfuniad fel a bennir gans Asesiad Athro.

**Table 1: Schools with up to 8 per cent eligible for FSM**

**Tabl 1: Ysgolion â hyd at 8 y cant yn gymwys i gael PYD**

Percentage of pupils achieving level 4 or above/Canran y disgyblion yn cyrraedd lefel 4 neu'n uwch

	Lower Quartile Chwartel Isaf	Median Canolrif	Upper Quartile Chwartel Uchaf
<b>English/Saesneg*</b>			
Teacher Assessment Asesiad Athro	78	86	94
Test/Prawf	80	90	100
<b>Welsh/Cymraeg**</b>			
Teacher Assessment Asesiad Athro	71	88	100
Test/Prawf	73	89	100
<b>Mathematics/Mathemateg</b>			
Teacher Assessment Asesiad Athro	77	87	94
Test/Prawf	75	86	96
<b>Science/Gwyddoniaeth</b>			
Teacher Assessment Asesiad Athro	86	95	100
Test/Prawf	90	97	100
<b>Core Subject Indicator/Dangosydd Pynciau Craidd</b>			
Teacher Assessment Asesiad Athro	73	83	92
Test/Prawf	71	82	92

**Number of schools/Nifer yr ysgolion = 422\*, 173\*\***

**Table 2: Schools with 9-16 per cent eligible for FSM**

**Tabl 2: Ysgolion â 9-16 y cant yn gymwys i gael PYD**

Percentage of pupils achieving level 4 or above/Canran y disgyblion yn cyrraedd lefel 4 neu'n uwch

	Lower Quartile Chwartel Isaf	Median Canolrif	Upper Quartile Chwartel Uchaf
<b>English/Saesneg*</b>			
Teacher Assessment Asesiad Athro	74	83	90
Test/Prawf	77	85	92
<b>Welsh/Cymraeg**</b>			
Teacher Assessment Asesiad Athro	69	80	90
Test/Prawf	74	84	100
<b>Mathematics/Mathemateg</b>			
Teacher Assessment Asesiad Athro	72	82	90
Test/Prawf	72	81	90
<b>Science/Gwyddoniaeth</b>			
Teacher Assessment Asesiad Athro	83	90	100
Test/Prawf	87	93	100
<b>Core Subject Indicator/Dangosydd Pynciau Craidd</b>			
Teacher Assessment Asesiad Athro	67	77	86
Test/Prawf	67	77	86

**Number of schools/Nifer yr ysgolion = 384\*, 165\*\***

**Table 3: Schools with 17-24 per cent eligible for FSM**

**Tabl 3: Ysgolion â 17-24 y cant yn gymwys i gael PYD**

Percentage of pupils achieving level 4 or above/Canran y disgyblion yn cyrraedd lefel 4 neu'n uwch

	Lower Quartile Chwartzel Isaf	Median Canolrif	Upper Quartile Chwartzel Uchaf
<b>English/Saesneg*</b>			
Teacher Assessment Asesiad Athro	68	77	86
Test/Prawf	70	80	88
<b>Welsh/Cymraeg**</b>			
Teacher Assessment Asesiad Athro	60	71	87
Test/Prawf	62	75	91
<b>Mathematics/Mathemateg</b>			
Teacher Assessment Asesiad Athro	67	75	87
Test/Prawf	64	73	85
<b>Science/Gwyddoniaeth</b>			
Teacher Assessment Asesiad Athro	77	86	93
Test/Prawf	82	89	96
<b>Core Subject Indicator/Dangosydd Pynciau Craidd</b>			
Teacher Assessment Asesiad Athro	60	70	80
Test/Prawf	57	68	78

**Number of schools/Nifer yr ysgolion = 254\*, 93\*\***

**Table 4: Schools with 25-32 per cent eligible for FSM**

**Tabl 4: Ysgolion â 25-32 y cant yn gymwys i gael PYD**

Percentage of pupils achieving level 4 or above/Canran y disgyblion yn cyrraedd lefel 4 neu'n uwch

	Lower Quartile Chwartzel Isaf	Median Canolrif	Upper Quartile Chwartzel Uchaf
<b>English/Saesneg*</b>			
Teacher Assessment Asesiad Athro	63	72	79
Test/Prawf	64	74	82
<b>Welsh/Cymraeg**</b>			
Teacher Assessment Asesiad Athro	57	71	83
Test/Prawf	55	70	83
<b>Mathematics/Mathemateg</b>			
Teacher Assessment Asesiad Athro	61	71	81
Test/Prawf	60	69	81
<b>Science/Gwyddoniaeth</b>			
Teacher Assessment Asesiad Athro	73	81	90
Test/Prawf	77	85	93
<b>Core Subject Indicator/Dangosydd Pynciau Craidd</b>			
Teacher Assessment Asesiad Athro	55	67	76
Test/Prawf	52	63	72

**Number of schools/Nifer yr ysgolion = 160\*, 35\*\***



**Table 5: Schools with 33 per cent or more eligible for FSM**

**Tabl 5: Ysgolion â 33 y cant neu ragor yn gymwys i gael PYD**

Percentage of pupils achieving level 4 or above/Canran y disgyblion yn cyrraedd lefel 4 neu'n uwch

	Lower Quartile Chwartel Isaf	Median Canolrif	Upper Quartile Chwartel Uchaf
<b>English/Saesneg*</b>			
Teacher Assessment Asesiad Athro	53	63	73
Test/Prawf	55	67	77
<b>Welsh/Cymraeg**</b>			
Teacher Assessment Asesiad Athro	46	63	72
Test/Prawf	55	66	76
<b>Mathematics/Mathemateg</b>			
Teacher Assessment Asesiad Athro	54	65	75
Test/Prawf	52	63	75
<b>Science/Gwyddoniaeth</b>			
Teacher Assessment Asesiad Athro	68	75	85
Test/Prawf	71	79	89
<b>Core Subject Indicator/Dangosydd Pynciau Craidd</b>			
Teacher Assessment Asesiad Athro	48	56	67
Test/Prawf	42	54	67

**Number of schools/Nifer yr ysgolion = 185\*, 15\*\***

**Table 6: All Key Stage 2 schools**

**Tabl 6: Pob ysgol Cyfnod Allweddol 2**

Percentage of pupils achieving level 4 or above/Canran y disgyblion yn cyrraedd lefel 4 neu'n uwch

	Lower Quartile Chwartel Isaf	Median Canolrif	Upper Quartile Chwartel Uchaf
<b>English/Saesneg*</b>			
Teacher Assessment Asesiad Athro	68	79	88
Test/Prawf	71	82	91
<b>Welsh/Cymraeg**</b>			
Teacher Assessment Asesiad Athro	67	80	93
Test/Prawf	67	83	100
<b>Mathematics/Mathemateg</b>			
Teacher Assessment Asesiad Athro	68	79	89
Test/Prawf	67	78	88
<b>Science/Gwyddoniaeth</b>			
Teacher Assessment Asesiad Athro	78	88	98
Test/Prawf	82	92	100
<b>Core Subject Indicator/Dangosydd Pynciau Craidd</b>			
Teacher Assessment Asesiad Athro	62	74	85
Test/Prawf	60	73	84

**Number of schools/Nifer yr ysgolion = 1405\*, 481\*\***

**Table 7: All Key Stage 2 Schools - Summary table****Tabl 7: Pob Ysgol Cyfnod Allweddol 2 - Tabl Crynodeb**

Percentage of pupils achieving level 4 or above/Canran y disgyblion yn cyrraedd lefel 4 neu'n uwch



FSM band/Band PYD				
Up to 8 per cent Hyd at 8 y cant	9 - 16	17 - 24	25-32	33 per cent or more 33 y cant neu ragor

**English/Saesneg\***

Teacher Assessment Aseiad Athro	86	81	75	71	62
Test/Prawf	89	83	78	73	65

**Welsh/Cymraeg\*\***

Teacher Assessment Aseiad Athro	83	78	71	71	42
Test/Prawf	85	81	73	71	45

**Mathematics/Mathemateg**

Teacher Assessment Aseiad Athro	86	80	75	71	63
Test/Prawf	85	80	73	69	61

**Science/Gwyddoniaeth**

Teacher Assessment Aseiad Athro	92	88	84	81	74
Test/Prawf	94	91	87	84	78

**Core Subject Indicator/Dangosydd Pynciau Craidd**

Teacher Assessment Aseiad Athro	82	75	69	65	55
Test/Prawf	81	76	67	63	54

**Table 8: Welsh or partly Welsh-medium schools with up to 8 per cent FSM**

**Tabl 8: Ysgolion Cymraeg neu rannol Gymraeg â hyd at 8 y cant PYD**

Percentage of pupils achieving level 4 or above/Canran y disgyblion yn cyrraedd lefel 4 neu'n uwch

	Lower Quartile Chwarterel Isaf	Median Canolrif	Upper Quartile Chwarterel Uchaf
<b>English/Saesneg</b>			
Teacher Assessment Aseiad Athro	75	84	96
Test/Prawf	78	89	100
<b>Welsh/Cymraeg</b>			
Teacher Assessment Aseiad Athro	72	88	100
Test/Prawf	73	90	100
<b>Mathematics/Mathemateg</b>			
Teacher Assessment Aseiad Athro	75	87	100
Test/Prawf	75	86	100
<b>Science/Gwyddoniaeth</b>			
Teacher Assessment Aseiad Athro	81	95	100
Test/Prawf	86	100	100
<b>Core Subject Indicator/Dangosydd Pynciau Craidd</b>			
Teacher Assessment Aseiad Athro	70	83	96
Test/Prawf	67	81	100

**Number of schools/Nifer yr ysgolion = 179\*, 172\*\***

**Table 9: Welsh or partly Welsh-medium schools with 9-16 per cent FSM**

**Tabl 9: Ysgolion Cymraeg neu rannol Gymraeg â 9-16 y cant PYD**

Percentage of pupils achieving level 4 or above/Canran y disgyblion yn cyrraedd lefel 4 neu'n uwch

	Lower Quartile Chwarterel Isaf	Median Canolrif	Upper Quartile Chwarterel Uchaf
<b>English/Saesneg</b>			
Teacher Assessment Aseiad Athro	75	84	91
Test/Prawf	79	86	93
<b>Welsh/Cymraeg</b>			
Teacher Assessment Aseiad Athro	69	81	90
Test/Prawf	74	84	100
<b>Mathematics/Mathemateg</b>			
Teacher Assessment Aseiad Athro	71	82	90
Test/Prawf	71	81	90
<b>Science/Gwyddoniaeth</b>			
Teacher Assessment Aseiad Athro	81	89	100
Test/Prawf	85	92	100
<b>Core Subject Indicator/Dangosydd Pynciau Craidd</b>			
Teacher Assessment Aseiad Athro	67	77	86
Test/Prawf	67	79	86

**Number of schools/Nifer yr ysgolion = 173\*, 164\*\***

**Table 10: Welsh or partly Welsh-medium schools with 17-24 per cent FSM**

**Tabl 10: Ysgolion Cymraeg neu rannol Gymraeg â 17-24 y cant PYD**

Percentage of pupils achieving level 4 or above/Canran y disgyblion yn cyrraedd lefel 4 neu'n uwch

	Lower Quartile Chwartel Isaf	Median Canolrif	Upper Quartile Chwartel Uchaf
<b>English/Saesneg</b>			
Teacher Assessment Asesiad Athro	68	77	88
Test/Prawf	69	80	91
<b>Welsh/Cymraeg</b>			
Teacher Assessment Asesiad Athro	60	71	88
Test/Prawf	62	75	91
<b>Mathematics/Mathemateg</b>			
Teacher Assessment Asesiad Athro	67	75	87
Test/Prawf	63	75	87
<b>Science/Gwyddoniaeth</b>			
Teacher Assessment Asesiad Athro	75	86	94
Test/Prawf	77	88	98
<b>Core Subject Indicator/Dangosydd Pynciau Craidd</b>			
Teacher Assessment Asesiad Athro	63	70	81
Test/Prawf	59	70	81

**Number of schools/Nifer yr ysgolion = 95\*, 92\*\***

**Table 11: Welsh or partly Welsh-medium schools with 25-32 per cent FSM**

**Tabl 11: Ysgolion Cymraeg neu rannol Gymraeg â 25-32 y cant PYD**

Percentage of pupils achieving level 4 or above/Canran y disgyblion yn cyrraedd lefel 4 neu'n uwch

	Lower Quartile Chwartel Isaf	Median Canolrif	Upper Quartile Chwartel Uchaf
<b>English/Saesneg</b>			
Teacher Assessment Asesiad Athro	61	73	81
Test/Prawf	63	74	86
<b>Welsh/Cymraeg</b>			
Teacher Assessment Asesiad Athro	57	71	83
Test/Prawf	55	70	83
<b>Mathematics/Mathemateg</b>			
Teacher Assessment Asesiad Athro	60	72	82
Test/Prawf	60	71	85
<b>Science/Gwyddoniaeth</b>			
Teacher Assessment Asesiad Athro	68	81	100
Test/Prawf	71	81	100
<b>Core Subject Indicator/Dangosydd Pynciau Craidd</b>			
Teacher Assessment Asesiad Athro	52	67	79
Test/Prawf	52	65	76

**Number of schools/Nifer yr ysgolion = 37\*, 35\*\***

**Table 12: All Welsh or partly Welsh-medium schools with 33 per cent or more FSM**

**Tabl 12: Ysgolion Cymraeg neu rannol Gymraeg â 33 y cant neu ragor PYD**

Percentage of pupils achieving level 4 or above/Canran y disgyblion yn cyrraedd lefel 4 neu'n uwch

	Lower Quartile Chwartzel Isaf	Median Canolrif	Upper Quartile Chwartzel Uchaf
<b>English/Saesneg*</b>			
Teacher Assessment Asesiad Athro	43	63	70
Test/Prawf	48	73	85
<b>Welsh/Cymraeg**</b>			
Teacher Assessment Asesiad Athro	46	63	72
Test/Prawf	55	66	76
<b>Mathematics/Mathemateg</b>			
Teacher Assessment Asesiad Athro	50	66	84
Test/Prawf	41	70	80
<b>Science/Gwyddoniaeth</b>			
Teacher Assessment Asesiad Athro	53	75	92
Test/Prawf	68	80	92
<b>Core Subject Indicator/Dangosydd Pynciau Craidd</b>			
Teacher Assessment Asesiad Athro	45	59	68
Test/Prawf	39	62	74

**Number of schools/Nifer yr ysgolion = 18\*, 15\*\***

**Table 13: All Welsh or partly Welsh-medium Key Stage 2 schools**

**Tabl 13: Ysgolion Cymraeg neu rannol Gymraeg Cyfnod Allweddol 2**

Percentage of pupils achieving level 4 or above/Canran y disgyblion yn cyrraedd lefel 4 neu'n uwch

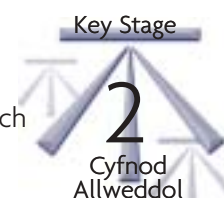
	Lower Quartile Chwartzel Isaf	Median Canolrif	Upper Quartile Chwartzel Uchaf
<b>English/Saesneg*</b>			
Teacher Assessment Asesiad Athro	71	81	91
Test/Prawf	75	85	96
<b>Welsh/Cymraeg**</b>			
Teacher Assessment Asesiad Athro	67	80	93
Test/Prawf	67	83	100
<b>Mathematics/Mathemateg</b>			
Teacher Assessment Asesiad Athro	70	81	91
Test/Prawf	68	80	93
<b>Science/Gwyddoniaeth</b>			
Teacher Assessment Asesiad Athro	79	90	100
Test/Prawf	82	92	100
<b>Core Subject Indicator/Dangosydd Pynciau Craidd</b>			
Teacher Assessment Asesiad Athro	64	76	88
Test/Prawf	64	75	89

**Number of schools/Nifer yr ysgolion = 502\*, 477\*\***



**Table 14: All Welsh or partly Welsh-medium schools - Summary table****Tabl 14: Ysgolion Cymraeg neu rannol Gymraeg - Tabl Crynodeb**

Percentage of pupils achieving level 4 or above/Canran y disgyblion yn cyrraedd lefel 4 neu'n uwch



Up to 8 per cent Hyd at 8 y cant	FSM band/Band PYD				33 per cent or more 33 y cant neu ragor	All Schools Pob Ysgol
	9 - 16	17 - 24	25 - 32			

**English/Saesneg**

Teacher Assessment Asesiad Athro	84	82	76	71	58	79
Test/Prawf	88	84	79	74	65	82

**Welsh/Cymraeg**

Teacher Assessment Asesiad Athro	83	79	71	71	42	76
Test/Prawf	85	81	74	71	45	78

**Mathematics/Mathemateg**

Teacher Assessment Asesiad Athro	85	80	75	68	62	78
Test/Prawf	83	80	73	70	61	78

**Science/Gwyddoniaeth**

Teacher Assessment Asesiad Athro	90	87	82	78	70	85
Test/Prawf	92	90	85	81	77	88

**Core Subject Indicator/Dangosydd Pynciau Craidd**

Teacher Assessment Asesiad Athro	81	76	70	64	55	74
Test/Prawf	80	77	69	65	55	74



**Table 15: English-medium schools with up to 4 per cent FSM**

**Tabl 15: Ysgolion Saesneg â hyd at 4 y cant PYD**

Percentage of pupils achieving level 4 or above/Canran y disgyblion yn cyrraedd lefel 4 neu'n uwch

<b>English/Saesneg</b>	Lower Quartile Chwartel Isaf	Median Canolrif	Upper Quartile Chwartel Uchaf
Teacher Assessment Asesiad Athro	80	88	94
Test/Prawf	85	91	98
<b>Mathematics/Mathemateg</b>			
Teacher Assessment Asesiad Athro	80	89	94
Test/Prawf	79	88	95
<b>Science/Gwyddoniaeth</b>			
Teacher Assessment Asesiad Athro	90	97	100
Test/Prawf	94	100	100
<b>Core Subject Indicator/Dangosydd Pynciau Craidd</b>			
Teacher Assessment Asesiad Athro	77	86	91
Test/Prawf	75	84	92

**Number of schools/Nifer yr ysgolion = 110\***

**Table 16: English-medium schools with 5-8 per cent FSM**

**Tabl 16: Ysgolion Saesneg â 5-8 y cant PYD**

Percentage of pupils achieving level 4 or above/Canran y disgyblion yn cyrraedd lefel 4 neu'n uwch

<b>English/Saesneg</b>	Lower Quartile Chwartel Isaf	Median Canolrif	Upper Quartile Chwartel Uchaf
Teacher Assessment Asesiad Athro	78	86	94
Test/Prawf	82	89	97
<b>Mathematics/Mathemateg</b>			
Teacher Assessment Asesiad Athro	77	85	91
Test/Prawf	75	84	92
<b>Science/Gwyddoniaeth</b>			
Teacher Assessment Asesiad Athro	86	93	100
Test/Prawf	89	96	100
<b>Core Subject Indicator/Dangosydd Pynciau Craidd</b>			
Teacher Assessment Asesiad Athro	71	81	88
Test/Prawf	70	80	89

**Number of schools/Nifer yr ysgolion = 133\***

**Table 17: English-medium schools with 9-12 per cent FSM****Tabl 17: Ysgolion Saesneg â 9-12 y cant PYD**

Percentage of pupils achieving level 4 or above/Canran y disgyblion yn cyrraedd lefel 4 neu'n uwch



<b>English/Saesneg</b>		Lower Quartile Chwartzel Isaf		Median Canolrif		Upper Quartile Chwartzel Uchaf	
Teacher Assessment Asesiad Athro		77		85		90	
Test/Prawf		79		88		93	
<b>Mathematics/Mathemateg</b>							
Teacher Assessment Asesiad Athro		77		84		90	
Test/Prawf		75		86		91	
<b>Science/Gwyddoniaeth</b>							
Teacher Assessment Asesiad Athro		86		93		98	
Test/Prawf		89		94		98	
<b>Core Subject Indicator/Dangosydd Pynciau Craidd</b>							
Teacher Assessment Asesiad Athro		71		79		80	
Test/Prawf		69		79		88	

**Number of schools/Nifer yr ysgolion = 107\***

**Table 18: English-medium schools with 13-16 per cent FSM****Tabl 18: Ysgolion Saesneg â 13-16 y cant PYD**

Percentage of pupils achieving level 4 or above/Canran y disgyblion yn cyrraedd lefel 4 neu'n uwch

<b>English/Saesneg</b>		Lower Quartile Chwartzel Isaf		Median Canolrif		Upper Quartile Chwartzel Uchaf	
Teacher Assessment Asesiad Athro		69		80		87	
Test/Prawf		74		80		87	
<b>Mathematics/Mathemateg</b>							
Teacher Assessment Asesiad Athro		71		79		89	
Test/Prawf		71		78		85	
<b>Science/Gwyddoniaeth</b>							
Teacher Assessment Asesiad Athro		82		90		97	
Test/Prawf		88		92		97	
<b>Core Subject Indicator/Dangosydd Pynciau Craidd</b>							
Teacher Assessment Asesiad Athro		63		75		83	
Test/Prawf		64		73		80	

**Number of schools/Nifer yr ysgolion = 104\***



**Table 19: English-medium schools with 17-20 per cent FSM**

**Tabl 19: Ysgolion Saesneg â 17-20 y cant PYD**

Percentage of pupils achieving level 4 or above/Canran y disgyblion yn cyrraedd lefel 4 neu'n uwch

<b>English/Saesneg</b>		Lower Quartile Chwartel Isaf		Median Canolrif		Upper Quartile Chwartel Uchaf	
Teacher Assessment Asesiad Athro		66		75		83	
Test/Prawf		66		77		86	
<b>Mathematics/Mathemateg</b>							
Teacher Assessment Asesiad Athro		64		75		88	
Test/Prawf		63		72		85	
<b>Science/Gwyddoniaeth</b>							
Teacher Assessment Asesiad Athro		77		86		94	
Test/Prawf		83		91		96	
<b>Core Subject Indicator/Dangosydd Pynciau Craidd</b>							
Teacher Assessment Asesiad Athro		56		68		79	
Test/Prawf		54		67		78	

**Number of schools/Nifer yr ysgolion = 76\***

**Table 20: English-medium schools with 21-24 per cent FSM**

**Tabl 20: Ysgolion Saesneg â 21-24 y cant PYD**

Percentage of pupils achieving level 4 or above/Canran y disgyblion yn cyrraedd lefel 4 neu'n uwch

<b>English/Saesneg</b>		Lower Quartile Chwartel Isaf		Median Canolrif		Upper Quartile Chwartel Uchaf	
Teacher Assessment Asesiad Athro		69		77		86	
Test/Prawf		71		79		87	
<b>Mathematics/Mathemateg</b>							
Teacher Assessment Asesiad Athro		67		78		86	
Test/Prawf		65		73		84	
<b>Science/Gwyddoniaeth</b>							
Teacher Assessment Asesiad Athro		78		86		93	
Test/Prawf		82		89		93	
<b>Core Subject Indicator/Dangosydd Pynciau Craidd</b>							
Teacher Assessment Asesiad Athro		61		72		81	
Test/Prawf		60		68		78	

**Number of schools/Nifer yr ysgolion = 83\***

**Table 21: English-medium schools with 25-28 per cent FSM**

**Tabl 21: Ysgolion Saesneg â 25-28 y cant PYD**

Percentage of pupils achieving level 4 or above/Canran y disgyblion yn cyrraedd lefel 4 neu'n uwch

<b>English/Saesneg</b>	Lower Quartile Chwartel Isaf	Median Canolrif	Upper Quartile Chwartel Uchaf
Teacher Assessment Asesiad Athro	68	75	81
Test/Prawf	70	76	83
<b>Mathematics/Mathemateg</b>			
Teacher Assessment Asesiad Athro	67	74	83
Test/Prawf	62	71	84
<b>Science/Gwyddoniaeth</b>			
Teacher Assessment Asesiad Athro	76	84	90
Test/Prawf	80	88	94
<b>Core Subject Indicator/Dangosydd Pynciau Craidd</b>			
Teacher Assessment Asesiad Athro	59	69	78
Test/Prawf	58	67	77

**Number of schools/Nifer yr ysgolion = 70**

**Table 22: English-medium schools with 29-32 per cent FSM**

**Tabl 22: Ysgolion Saesneg â 29-32 y cant PYD**

Percentage of pupils achieving level 4 or above/Canran y disgyblion yn cyrraedd lefel 4 neu'n uwch

<b>English/Saesneg</b>	Lower Quartile Chwartel Isaf	Median Canolrif	Upper Quartile Chwartel Uchaf
Teacher Assessment Asesiad Athro	59	67	75
Test/Prawf	61	69	77
<b>Mathematics/Mathemateg</b>			
Teacher Assessment Asesiad Athro	59	69	78
Test/Prawf	54	64	69
<b>Science/Gwyddoniaeth</b>			
Teacher Assessment Asesiad Athro	71	79	87
Test/Prawf	77	83	90
<b>Core Subject Indicator/Dangosydd Pynciau Craidd</b>			
Teacher Assessment Asesiad Athro	51	63	71
Test/Prawf	46	57	65

**Number of schools/Nifer yr ysgolion = 53\***

**Table 23: English-medium schools with 33-40 per cent FSM**

**Tabl 23: Ysgolion Saesneg â 33-40 y cant PYD**

Percentage of pupils achieving level 4 or above/Canran y disgyblion yn cyrraedd lefel 4 neu'n uwch

<b>English/Saesneg</b>		Lower Quartile Chwartel Isaf		Median Canolrif		Upper Quartile Chwartel Uchaf	
Teacher Assessment Asesiad Athro		56		67		75	
Test/Prawf		59		68		80	
<b>Mathematics/Mathemateg</b>							
Teacher Assessment Asesiad Athro		59		67		76	
Test/Prawf		55		64		76	
<b>Science/Gwyddoniaeth</b>							
Teacher Assessment Asesiad Athro		72		77		87	
Test/Prawf		75		81		90	
<b>Core Subject Indicator/Dangosydd Pynciau Craidd</b>							
Teacher Assessment Asesiad Athro		52		59		71	
Test/Prawf		47		58		72	

**Number of schools/Nifer yr ysgolion = 82\***

**Table 24: English-medium schools with 41-48 per cent FSM**

**Tabl 24: Ysgolion Saesneg â 41-48 y cant PYD**

Percentage of pupils achieving level 4 or above/Canran y disgyblion yn cyrraedd lefel 4 neu'n uwch

<b>English/Saesneg</b>		Lower Quartile Chwartel Isaf		Median Canolrif		Upper Quartile Chwartel Uchaf	
Teacher Assessment Asesiad Athro		54		63		73	
Test/Prawf		56		64		75	
<b>Mathematics/Mathemateg</b>							
Teacher Assessment Asesiad Athro		56		65		72	
Test/Prawf		53		63		70	
<b>Science/Gwyddoniaeth</b>							
Teacher Assessment Asesiad Athro		68		76		84	
Test/Prawf		70		77		89	
<b>Core Subject Indicator/Dangosydd Pynciau Craidd</b>							
Teacher Assessment Asesiad Athro		50		57		66	
Test/Prawf		44		53		64	

**Number of schools/Nifer yr ysgolion =45\***

**Table 25: English-medium schools with 49 per cent FSM**

**Tabl 25: Ysgolion Saesneg â 49 y cant PYD**

Percentage of pupils achieving level 4 or above/Canran y disgyblion yn cyrraedd lefel 4 neu'n uwch

<b>English/Saesneg</b>		Lower Quartile Chwartzel Isaf		Median Canolrif		Upper Quartile Chwartzel Uchaf	
Teacher Assessment Asesiad Athro		45		56		69	
Test/Prawf		47		57		72	
<b>Mathematics/Mathemateg</b>							
Teacher Assessment Asesiad Athro		46		58		71	
Test/Prawf		44		52		70	
<b>Science/Gwyddoniaeth</b>							
Teacher Assessment Asesiad Athro		59		72		77	
Test/Prawf		64		73		85	
<b>Core Subject Indicator/Dangosydd Pynciau Craidd</b>							
Teacher Assessment Asesiad Athro		37		47		61	
Test/Prawf		33		42		61	

**Number of schools/Nifer yr ysgolion = 40\***

**Table 26: English-medium Key Stage 2 schools**

**Tabl 26: Ysgolion Saesneg Cyfnod Allweddol 2**

Percentage of pupils achieving level 4 or above/Canran y disgyblion yn cyrraedd lefel 4 neu'n uwch

<b>English/Saesneg</b>		Lower Quartile Chwartzel Isaf		Median Canolrif		Upper Quartile Chwartzel Uchaf	
Teacher Assessment Asesiad Athro		67		78		87	
Test/Prawf		69		81		90	
<b>Mathematics/Mathemateg</b>							
Teacher Assessment Asesiad Athro		67		78		88	
Test/Prawf		65		77		87	
<b>Science/Gwyddoniaeth</b>							
Teacher Assessment Asesiad Athro		78		88		96	
Test/Prawf		83		91		97	
<b>Core Subject Indicator/ Dangosydd Pynciau Craidd</b>							
Teacher Assessment Asesiad Athro		60		73		83	
Test/Prawf		58		71		82	

**Number of schools/Nifer yr ysgolion = 903\***

**Table 27: All English-medium Schools - Summary Table**  
**Table 27: Ysgolion Saesneg - Tabl crynodeb**

Percentage of pupils achieving level 2 or above/Canran y disgyblion yn cyrraedd lefel 2 neu'n uwch

Up to 4 per cent Hyd at 4 y cant	FSM Band/Band PYD										All Schools Pob ysgol
	5-8	9-12	13-16	17-20	21-24	25-28	29-32	33-40	41-48 or more	49 per cent neu ragor	

#### English/Saesneg

Teacher Assessment  
 Asesiad Athro  
 Test./Prawf

89	85	83	77	74	76	73	67	66	62	54	76
91	87	86	81	76	78	75	70	69	64	56	78

#### Mathematics/Mathemateg

Teacher Assessment  
 Asesiad Athro  
 Test./Prawf

89	84	83	77	73	76	73	69	66	63	54	76
88	83	82	78	72	73	72	64	65	62	51	74

#### Science/Gwyddoniaeth

Teacher Assessment  
 Asesiad Athro  
 Test./Prawf

94	91	91	86	84	85	82	79	77	76	67	85
96	94	93	90	88	87	85	82	81	79	71	88

#### Core Subject Indicator /Dangosydd Pynciau Craidd

Teacher Assessment  
 Asesiad Athro  
 Test./Prawf

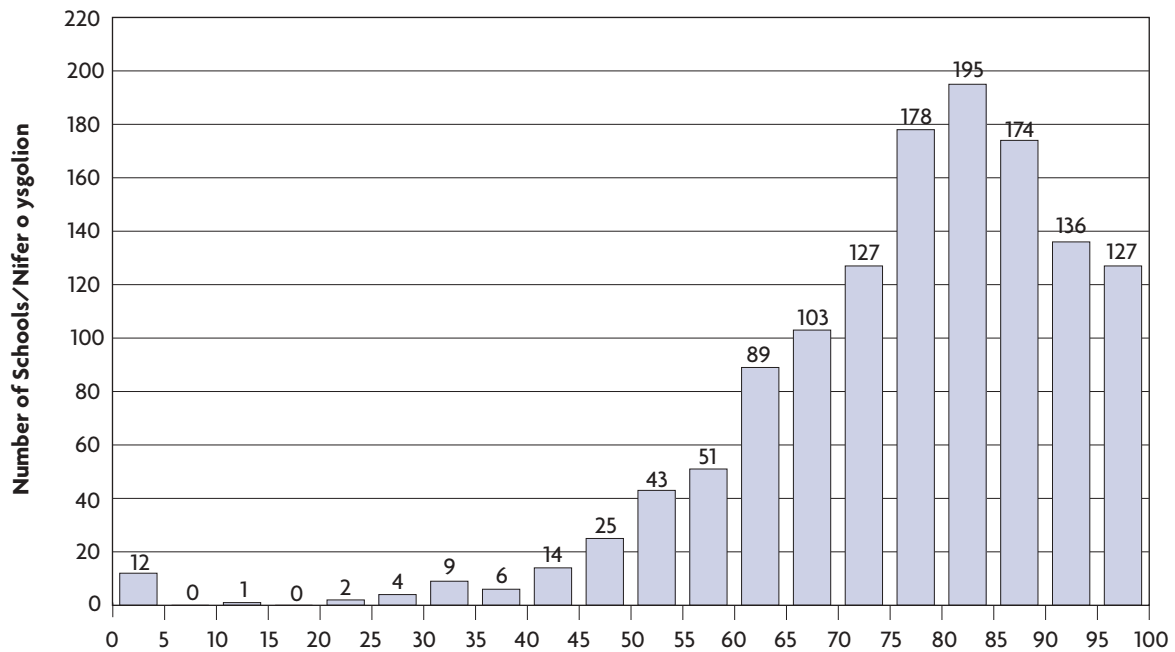
86	80	79	72	67	70	67	62	59	56	45	70
85	79	78	72	65	68	65	58	58	55	43	69



# Performance Bands/Bandiau Perfformiad

English/Saesneg

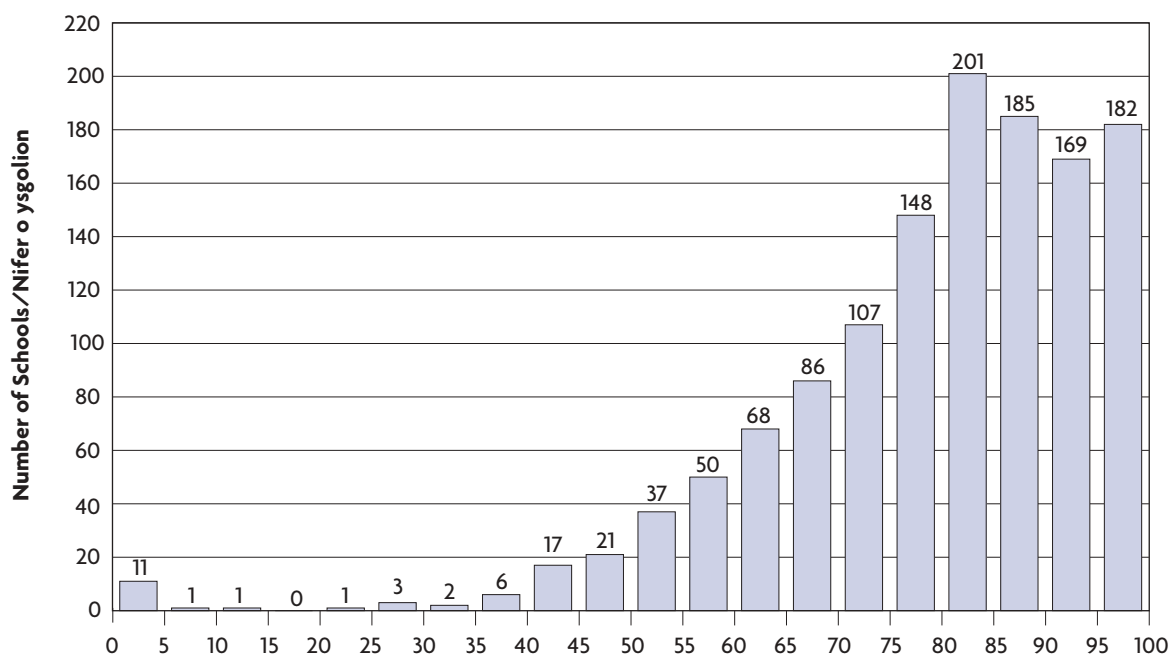
Teacher Assessments/Aseidiadau Athrawon



Per cent at level 4 or above/canran ar lefel 4 neu'n uwch

English/Saesneg

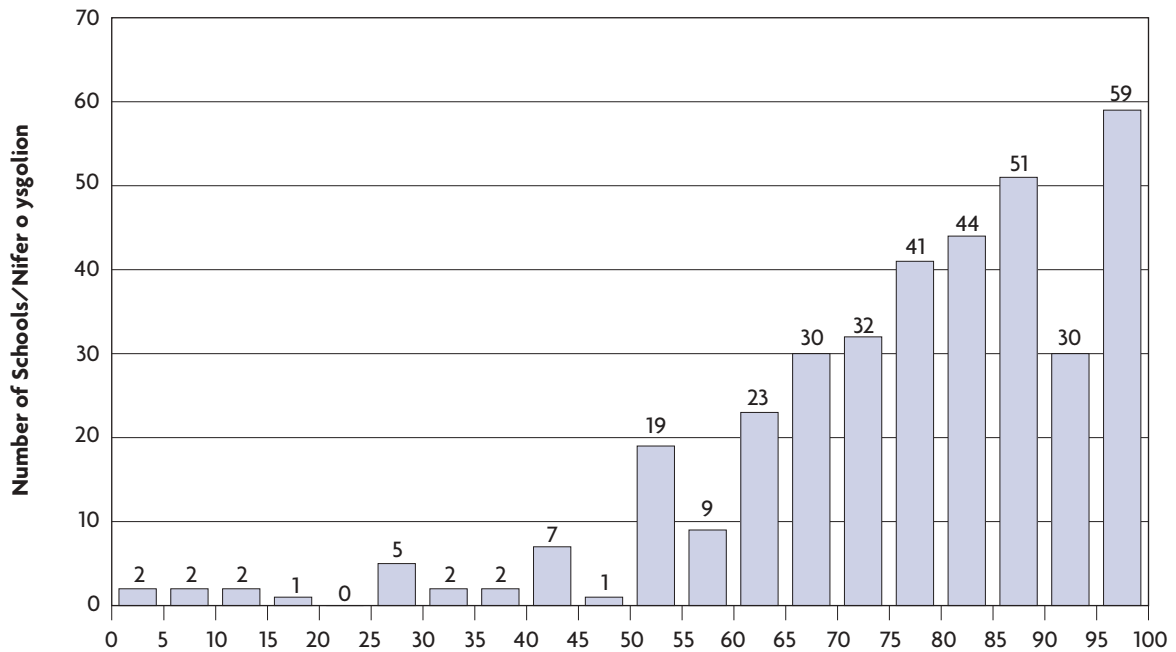
Tests/Profion



Per cent at level 4 or above/canran ar lefel 4 neu'n uwch

Welsh/Cymraeg

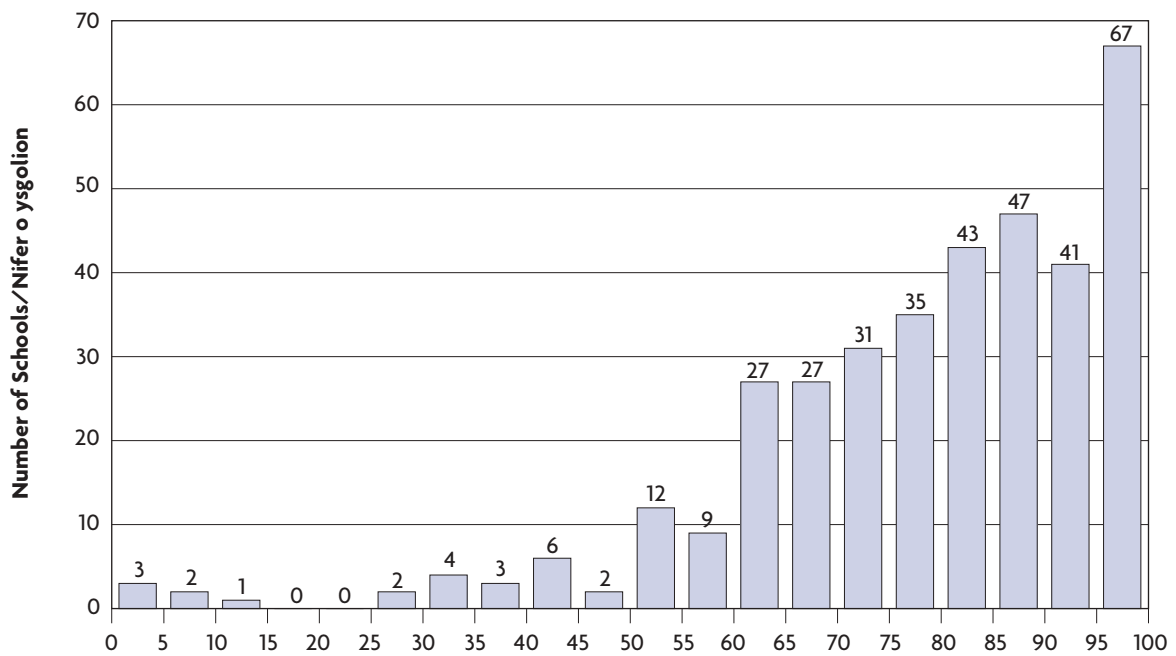
Teacher Assessments/Aseidiadau Athrawon



Per cent at level 4 or above/canran ar lefel 4 neu'n uwch

Welsh/Cymraeg

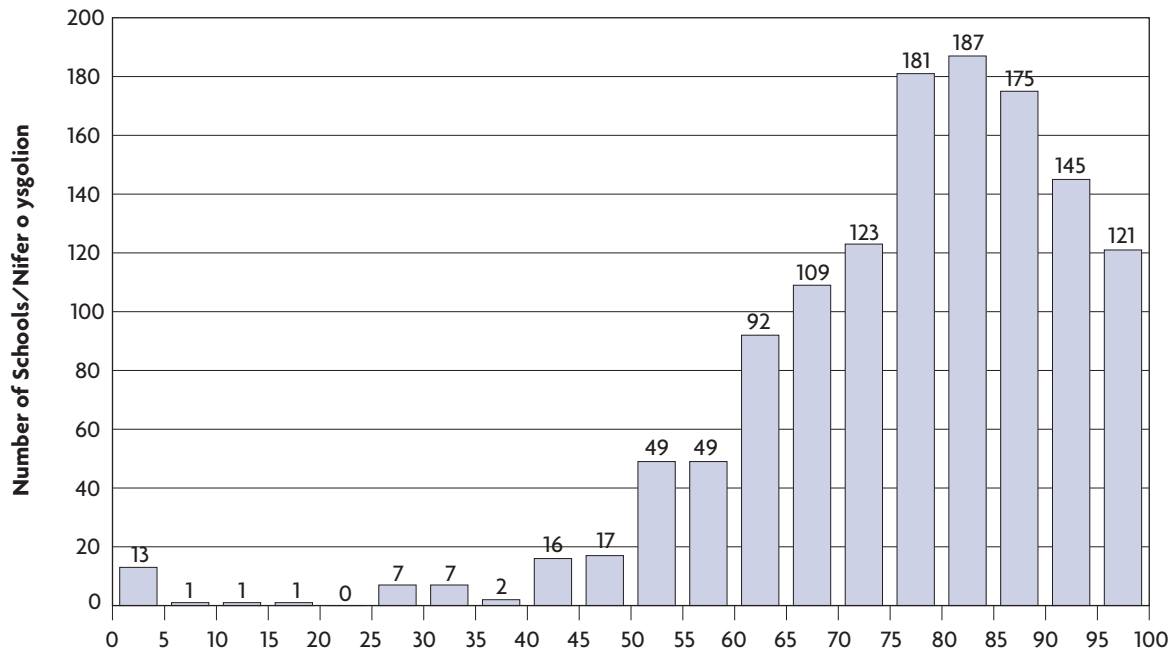
Tests/Profion



Per cent at level 4 or above/canran ar lefel 4 neu'n uwch

## Mathematics/Mathemateg

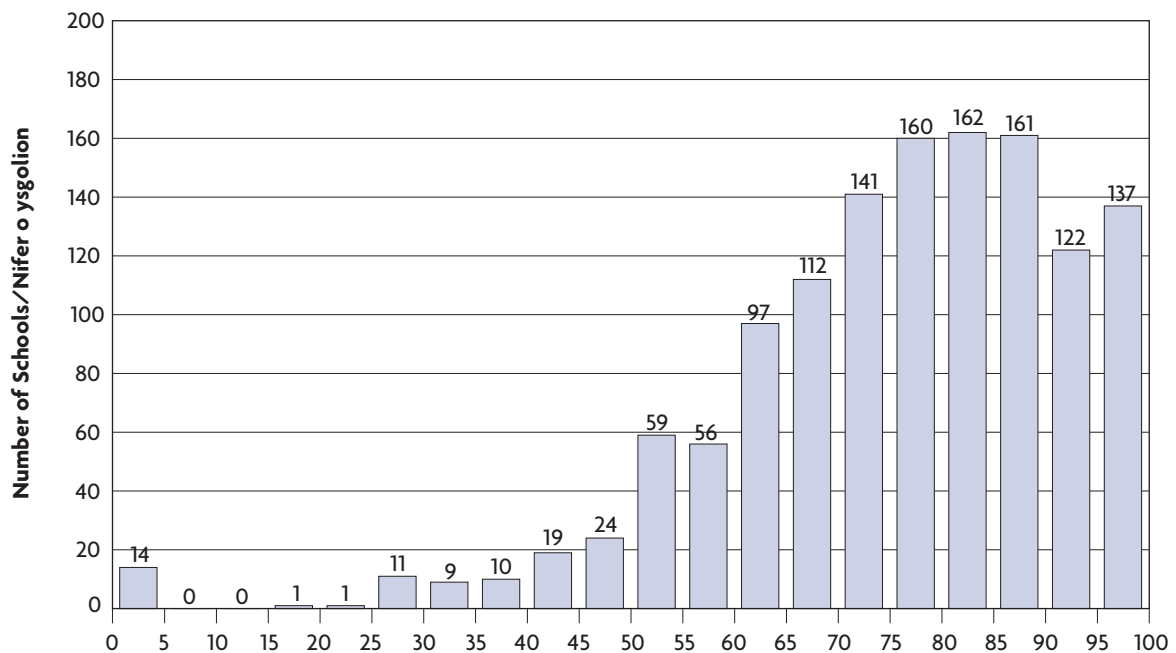
### Teacher Assessments/Aseidiadau Athrawon



Per cent at level 4 or above/canran ar lefel 4 neu'n uwch

## Mathematics/Mathemateg

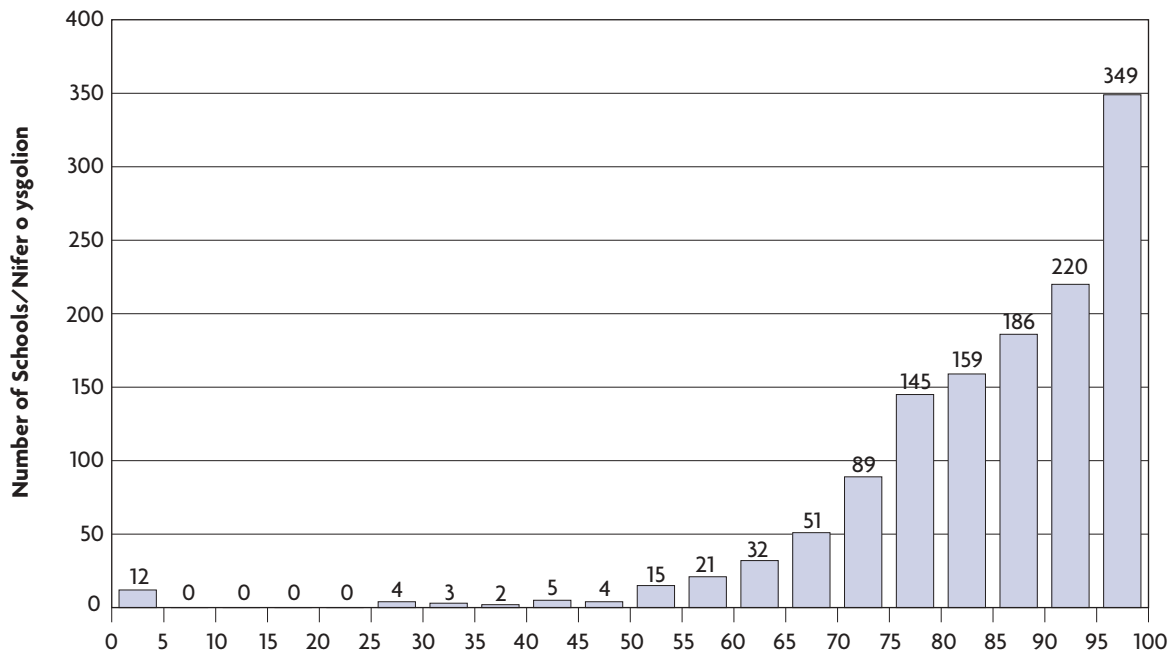
### Tests/Profion



Per cent at level 4 or above/canran ar lefel 4 neu'n uwch

Science/Gwyddoniaeth

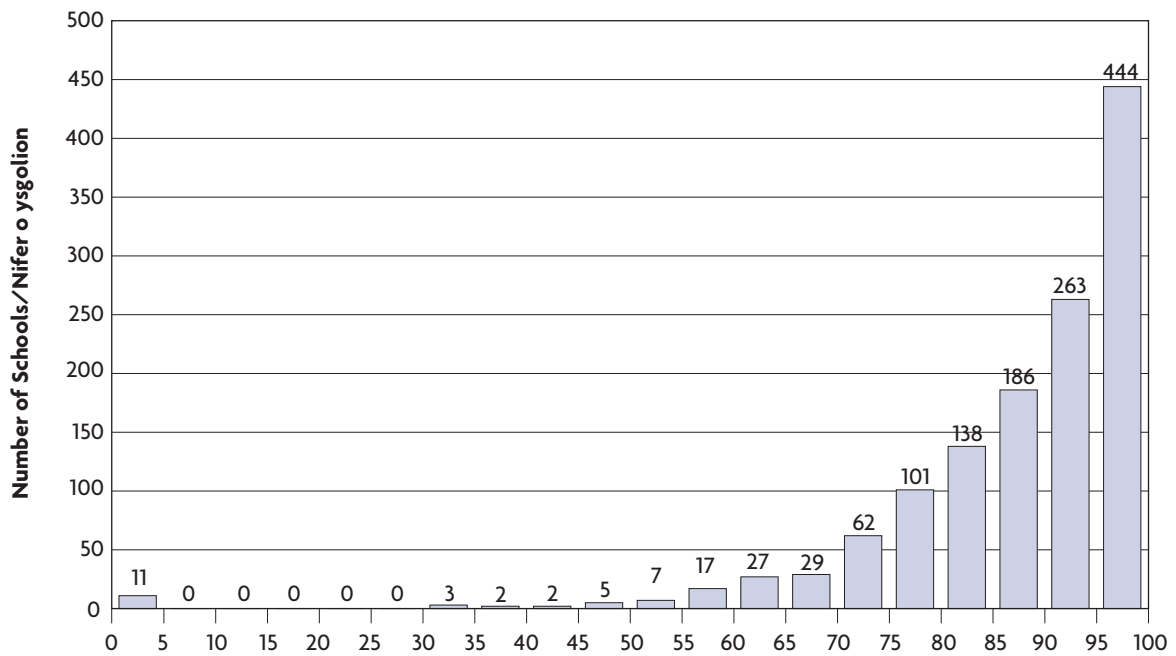
Teacher Assessments/Aseidiadau Athrawon



Per cent at level 4 or above/canran ar lefel 4 neu'n uwch

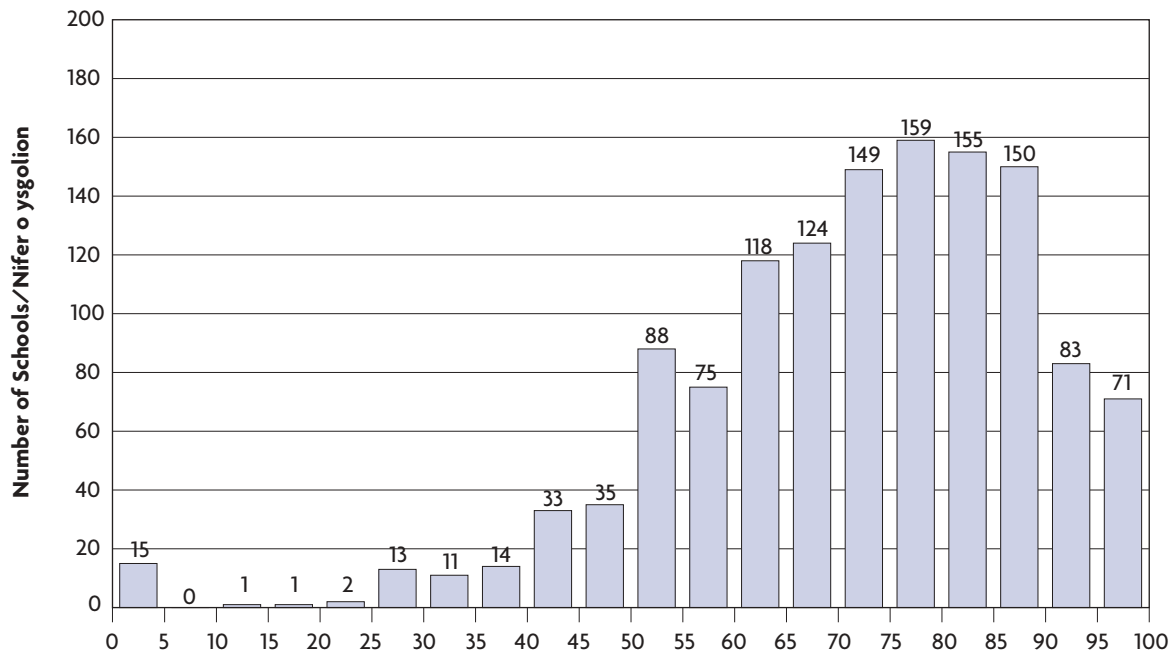
Science/Gwyddoniaeth

Tests/Profion



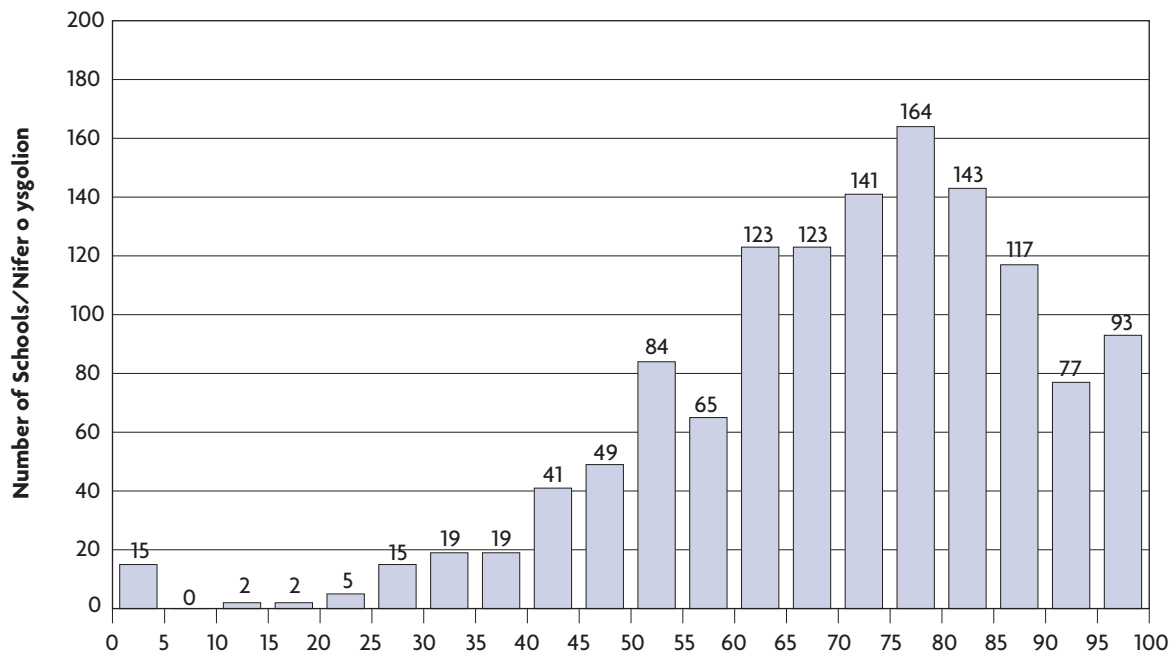
Per cent at level 4 or above/canran ar lefel 4 neu'n uwch

**Core Subject Indicator/Dangosydd Pynciau Craidd**  
**Teacher Assessments/Aseidiadau Athrawon**



Per cent at level 4 or above/canran ar lefel 4 neu'n uwch

**Core Subject Indicator/Dangosydd Pynciau Craidd**  
**Tests/Profion**



Per cent at level 4 or above/canran ar lefel 4 neu'n uwch

## Notes

## Nodiau

