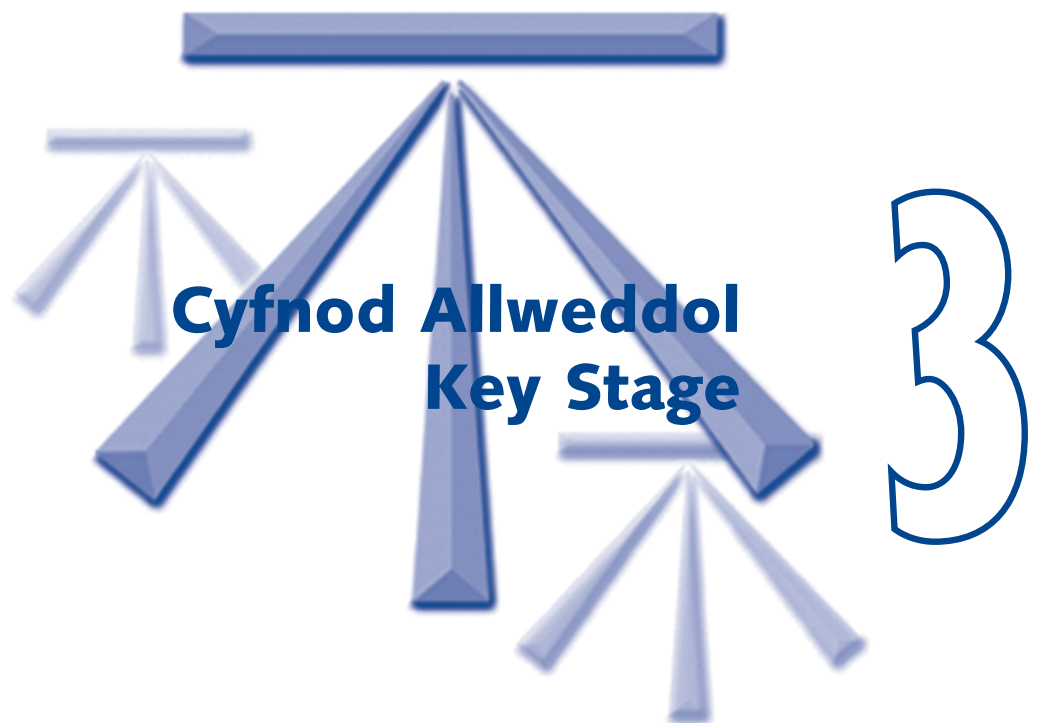


Dogfen Wybodaeth AHA rhif:
DFTE Information Document No: 048-03

Dyddiad Argraffu: Mawrth 2004
Date of Issue: March 2004

Gwybodaeth Feincnodi



2003

Benchmark Information

Benchmark Information for Key Stage 3: 2003

Audience: Headteachers, Governing Bodies and Directors of Education

Further copies of this booklet and those listed below may be obtained from:

**Parents and Information Branch (SPD4)
Department for Training and Education
Welsh Assembly Government
Cathays Park
CARDIFF CF10 3NQ**

**(029) 2082 6010 Fax (029) 2082 6016
email - education.training@wales.gsi.gov.uk
or visit our website - www.learning.wales.gov.uk**

Also available from the Welsh Assembly Government

**National Curriculum Assessment and Public Examination Results (for each LEA area) 2002 and 2003
National Curriculum Assessment Results in Wales: Key Stage 1 for 1997 to 2001
National Curriculum Assessment Results in Wales: Key Stage 2 for 1997 to 2001
National Curriculum Assessment Results in Wales: Key Stage 3 for 1997 to 2001
National Curriculum Assessment Results in Wales: Key Stage 3 non-core subjects for 2001
GCSE/GNVQ Results in Wales: 1997 – 2001
A/AS level and GNVQ results in Wales: 2001
Benchmark Information for Key Stage 1: 1997 – 2002
Benchmark Information for Key Stage 2: 1997-2003
Benchmark Information for Key Stages 3 & 4: 1997 - 2002
Benchmark Information for Key Stage 3: 2003
Benchmark Information for Key Stage 4: 2003**

Gwybodaeth Feincodi ar gyfer Cyfnod Allweddol 3: 2003

Y Gynulleidfa: Prifathrawon, Cyrff Llywodraethol a Chyfarwyddwyr Addysg

Gellir cael ragor o gopiau o'r llyfryn yma ac y rhai sydd wedi ei rhestru isod wrth:

**Y Gangen Rhieni A Gwybodaeth (SPD4)
Adran Hyfforddiant ac Addysg
Llywodraeth Cynulliad Cymru
Parc Cathays
CAERDYDD CF10 3NQ**

**(029) 2082 6010 Ffacs (029) 2082 6016
e-bost : education.training@wales.gsi.gov.uk
neu ymweld ein wefan – www.dysgu.cymru.gov.uk**

Hefyd a'r gael o Llywodraeth Cynulliad Cymru

Canlyniadau'r Asesiad Cwricwlwm Cenedlaethol a Arholiadau Cyhoeddus (am bob ardal AAII) 2002 a 2003
Canlyniadau Asesiadau'r Cwricwlwm Cenedlaethol yng Nghymru: Cyfnod Allweddol 1 ar gyfer 1997 i 2001
Canlyniadau Asesiadau'r Cwricwlwm Cenedlaethol yng Nghymru: Cyfnod Allweddol 2 ar gyfer 1997 i 2001
Canlyniadau Asesiadau'r Cwricwlwm Cenedlaethol yng Nghymru: Cyfnod Allweddol 3 ar gyfer 1997 i 2001
Canlyniadau Asesiadau'r Cwricwlwm Cenedlaethol yng Nghymru: Cyfnod Allweddol 3 pynciau di-graidd ar gyfer 1997 i 2001
Canlyniadau TGAU/CGCC yng Nghymru: 1997 – 2001
Canlyniadau Safon U/UG a CGCC yng Nghymru: 2001
Gwybodaeth Feincodi ar gyfer Cyfnod Allweddol 1: 1997-2002
Gwybodaeth Feincodi ar gyfer Cyfnod Allweddol 2: 1997-2003
Gwybodaeth Feincodi ar gyfer Cyfnodau Allweddol 3 & 4: 1997-2002
Gwybodaeth Feincodi ar gyfer Cyfnodau Allweddol 3: 2003
Gwybodaeth Feincodi ar gyfer Cyfnodau Allweddol 4: 2003

Contents

	Page
Introduction	4
How to use the Benchmark Tables	6
Key Stage 3	
Table 1: Schools with up to and including 10 per cent free school meals	8
Table 2: Schools with 11-15 per cent free school meals	9
Table 3: Schools with 16-20 per cent free school meal	10
Table 4: Schools with 21-30per cent free school meals	11
Table 5: Schools with 31 per cent or more free school meals	12
Table 6: Welsh-speaking Schools	13
Table 7: English-speaking Schools	14
Table 8: All secondary schools	15
Table 9: Welsh speaking schools - Summary table	16
Table 10: English speaking schools - Summary table	17
Table 11: All secondary schools - Summary table	18
Performance Bands - Core Subjects	
English	
19	
Welsh	20
Mathematics	21
Science	22
Core Subject Indicator	23
Performance Bands - Non-core Subjects	
Art	24
Design and Technology	24
Geography	25
History	25
Information Technology	26
Modern Foreign Language	26
Music	27
Physical Education	27
Welsh Second Language	28

Cynnwys

	Tudalen
Cyflwyniad	5
Sut i ddefnyddio'r Tablau Meincnodi	6
Cyfnod Allweddol 3	
Tabl 1: Ysgolion â hyd at, 10% yn gymwys i gael Prydau ysgol Di-Dâl (PYD)	8
Tabl 2: Ysgolion ag 11-15% yn gymwys i gael PYD	9
Tabl 3: Ysgolion ag 16-20% yn gymwys i gael PYD	10
Tabl 4: Ysgolion ag 21-30% yn gymwys i gael PYD	11
Tabl 5: Ysgolion ag 31% neu ragor yn gymwys i gael PYD	12
Tabl 6: Ysgolion Cymraeg	13
Tabl 7: Ysgolion Saesneg	14
Tabl 8: Pob ysgol uwchradd	15
Tabl 9: Ysgolion Cymraeg - Tabl crynodeb	16
Tabl 10: Ysgolion Saesneg - Tabl crynodeb	17
Tabl 11: Pob ysgol uwchradd - Tabl crynodeb	18
Bandiau Perfformiad - Pynciau Craidd	
Saesneg	19
Cymraeg	20
Mathemateg	21
Gwyddoniaeth	22
Dangosydd Pynciau Craidd	23
Bandiau Perfformiad - Pynciau Di-Graidd	
Celf	24
Dylunio a Thechnoleg	24
Daeryddiaeth	25
Hanes	25
Technoleg Gwybodaeth	26
Ieithoedd Tramor Modern	26
Cerddoriaeth	27
Addysg Gorfforol	27
Cymraeg Ail Iaith	28

Introduction

This is the seventh year for which benchmark information has been published and it is hoped that schools and LEAs will use it to support their target setting processes. The tables displayed in this booklet are based on the results derived from the 2003 National Curriculum assessments.

The purpose of providing benchmark information is to show how well schools can do, whatever their circumstances. Benchmark Information brings together the results of similar schools into simple tables, which are ordered according to the proportion of children known to be eligible for free school meals (FSM). By looking at the tables, which have been extended for English-medium schools, schools can find out how well their results compare with similar schools.

The presentation of the benchmark information illustrates clearly the range of performance in each group of schools. Blank columns allow schools to enter their own results for different indicators i.e. the percentage of pupils attaining level 5 or above, or those achieving the Core Subject Indicator (CSI). The tables are based on the results from maintained schools.

The charts towards the back of the book show the number of schools in a range of performance bands for each subject and the Core Subject Indicator. The charts are based on the number of schools with more than five pupils eligible for assessment.

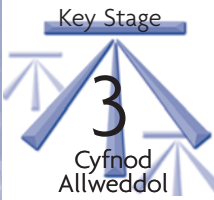
Cyflwyniad

Dyma'r seithfed flwyddyn y mae'r wybodaeth feincnodi wedi'i chyhoeddi, a'r gobaith yw y bydd ysgolion ac AALLau yn ei defnyddio i'w helpu gyda'u prosesau gosod targedau. Mae'r tablau sydd yn y llyfr hwn wedi'u seilio ar y canlyniadau sy'n deillio o asesiadau athrawon o dan y Cwricwlwm Cenedlaethol yn 2003.

Diben rhoi gwybodaeth feincnodi yw dangos cystal gwaith y gall ysgolion ei gyflawni, beth bynnag y bo'u hamgylchiadau. Mae Gwybodaeth Feincnodi yn dwyn ynghyd ganlyniadau ysgolion tebyg ac yn eu rhoi mewn tablau syml sydd wedi'u trefnu yn ôl nifer y plant y gwyddys eu bod yn gymwys i gael pryd ysgol am ddim (PYD). Drwy edrych ar y tablau, sydd bellach yn cynnwys ysgolion cyfrwng-Saesneg, gall ysgolion weld sut mae eu canlyniadau'n cymharu ag ysgolion tebyg.

Mae'r ffordd y mae'r wybodaeth feincnodi wedi'i chyflwyno yn dangos yn glir sut mae perfformiad pob grŵp o ysgolion yn amrywio. Mae'r colofnau gwag yn caniatâu i ysgolion gofnodi eu canlyniadau eu hunain ar gyfer y gwahanol ddangosyddion h.y. canran y disgyblion sy'n cyrraedd lefel 5 neu uwch, neu'r rhai sy'n cyflawni'r Dangosydd Pynciau Craidd. Mae'r canlyniadau wedi'u seilio ar ganlyniadau ysgolion a gynhelir.

Mae'r siartiau tua cefn y llyfr yn dangos nifer yr ysgolion sydd mewn ystod o fandiau perfformiad ar gyfer pob pwnc ac ar gyfer y Dangosydd Pynciau Craidd. Mae'r siartiau wedi'u seilio ar nifer yr ysgolion lle mae mwy na phum disgybl sy'n gymwys i'w hasesu.



How to use the Benchmark Tables Sut i ddefnyddio'r tablau

Table 1: Schools with up to 10 per cent eligible for FSM

Tabl 1: Ysgolion â hyd at 10 y cant yn gymwys i gael PYD

Percentage of pupils achieving level 5 or above
Canran y disgyblion yn cyrraedd lefel 5 neu uwch

English/Saesneg	Lower Quartile Chwartel Isaf	Median Canolrif	Upper Quartile Chwartel Uchaf
Teacher Assessment Aseiad Athro	72	76	83
Test Prawf	60	77	80
Mathematics/Mathemateg			
Teacher Assessment Aseiad Athro	75	80	83
Test Prawf	73	76	80
Science/Gwyddoniaeth			
Teacher Assessment Aseiad Athro	70	79	88
Test Prawf	76	82	87
Core Subject Indicator/Dangosydd Pynciau Craidd			
Teacher Assessment Aseiad Athro	60	67	73
Test Prawf	60	64	71

Number of schools/Nifer yr ysgolion = 54

School performance is in the bottom 25% (the lower quartile) of schools in the table.
Perfformiad Ysgol yn y 25% isaf (y chwartel isaf) o ysgolion yn y tabl.

School performance is in the top 50% (above the median) and below the best performing 25% (the upper quartile).
Perfformiad ysgol yn y 50% uchaf (uwchlaw'r canolrif ac islaw'r 25% sy'n perfformio orau (y chwartel uchaf)

School performance is in the bottom 50% (below the median) of schools but above the lowest performing 25% (the lower quartile).
Perfformiad ysgol yn y 50% isaf (islaw'r canolrif) o ysgolion ond uwchlaw'r 25% isaf eu perfformiad (chwartel isaf)

School is performing in the top 25% (the upper quartile).
Ysgol yn perfformio yn y 25% uchaf (y chwartel uchaf)

Terms used in the tables

FSM:	The percentage of pupils who are known to be eligible for free school meals is based on the January 2003 School Census Returns.
Lower Quartile:	The performance below which 25 per cent of schools fall.
Median:	The performance exceeded by 50 per cent of schools.
Upper Quartile:	The performance exceeded by 25 per cent of schools.
Number of schools:	The number of schools with results used in this table.
Core Subject Indicator:	Key Stage 3: The percentage of pupils attaining at least level 5 in each of English or Welsh (first language), mathematics and science in combination.



Termau a ddefnyddir yn y tablau

PYD:	Canran y disgyblion y gwyddys eu bod yn gymwys i gael prydau ysgol am ddim wedi ei seilio ar Ffurflenni Cyfrifiad Ysgolion Ionawr 2003.
Chwartzel Isaf:	Y perfformiad y mae 25 y cant o ysgolion yn cwmpo'n is nag ef.
Canolrif:	Y perfformiad y mae 50 y cant o ysgolion yn gwneud yn well nag ef.
Chwartzel Uchaf:	Y perfformiad y mae 25 y cant o ysgolion yn gwneud yn well nag ef.
Nifer yr ysgolion:	Nifer yr ysgolion â chanlyniadau wedi'u defnyddio yn y tabl.
Dangosydd Pynciau Craidd:	Cyfnod Allweddol 3: Canran y disgyblion yn cyrraedd o leiaf lefel 5 mewn Cymraeg (iaith gyntaf) neu Saesneg, mathemateg neu wyddoniaeth mewn cyfuniad.

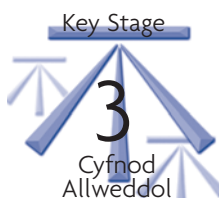


Table 1: Schools with up to 10 per cent eligible for FSM

Tabl 1: Ysgolion â hyd at 10 y cant yn gymwys i gael PYD

Percentage of pupils achieving level 5 or above/Canran y disgyblion yn cyrraedd lefel 5 neu'n uwch

	Lower Quartile Chwarterel Isaf	Median Canolrif	Upper Quartile Chwarterel Uchaf
English/Saesneg			
Teacher Assessment Asesiad Athro	71	77	83
Test Prawf	70	76	82
Mathematics/Mathemateg			
Teacher Assessment Asesiad Athro	74	80	86
Test Prawf	75	79	85
Science/Gwyddoniaeth			
Teacher Assessment Asesiad Athro	73	80	86
Test Prawf	75	83	87
Core Subject Indicator/Dangosydd Pynciau Craidd			
Teacher Assessment Asesiad Athro	62	69	75
Test Prawf	60	68	74
Art/Celf			
Teacher Assessment Asesiad Athro	70	83	92
Design & Technology/Dylunio a Thechnoleg			
Teacher Assessment Asesiad Athro	72	82	90
Geography/Daearyddiaeth			
Teacher Assessment Asesiad Athro	70	77	86
History/Hanes			
Teacher Assessment Asesiad Athro	68	78	88
Information Technology/Technoleg Gwybodaeth			
Teacher Assessment Asesiad Athro	70	82	90
Modern Foreign Language/Ieithoedd Fodern			
Teacher Assessment Asesiad Athro	48	59	72
Music/Cerddoriaeth			
Teacher Assessment Asesiad Athro	72	80	87
Physical Education/Addysg Gorfforol			
Teacher Assessment Asesiad Athro	67	79	87
Welsh Second Language/Cymraeg Ail Iaith			
Teacher Assessment Asesiad Athro	48	56	66

Number of schools/Nifer yr ysgolion = 61

Table 2: Schools with 11-15 per cent eligible for FSM

Tabl 2: Ysgolion 11-15 y cant yn gymwys i gael PYD

Percentage of pupils achieving level 5 or above/Canran y disgyblion yn cyrraedd lefel 5 neu uwch



English/Saesneg	Lower Quartile Chwarter Isaf	Median Canolrif	Upper Quartile Chwarter Uchaf
Teacher Assessment Aseiad Athro	62	68	72
Test Prawf	63	67	71

Mathematics/Mathemateg

Teacher Assessment Aseiad Athro	68	74	78
Test Prawf	68	71	75

Science/Gwyddoniaeth

Teacher Assessment Aseiad Athro	64	74	81
Test Prawf	69	75	81

Core Subject Indicator/Dangosydd Pynciau Craidd

Teacher Assessment Aseiad Athro	53	59	66
Test Prawf	51	57	63

Art/Celf	Lower Quartile Chwarter Isaf	Median Canolrif	Upper Quartile Chwarter Uchaf
Teacher Assessment Aseiad Athro	68	80	90

Design & Technology/Dylunio a Thechnoleg

Teacher Assessment Aseiad Athro	61	76	85
------------------------------------	----	----	----

Geography/Daeryddiaeth

Teacher Assessment Aseiad Athro	65	70	80
------------------------------------	----	----	----

History/Hanes

Teacher Assessment Aseiad Athro	64	70	78
------------------------------------	----	----	----

Information Technology/Technoleg Gwybodaeth

Teacher Assessment Aseiad Athro	62	78	87
------------------------------------	----	----	----

Modern Foreign Language/leithoedd Fodern

Teacher Assessment Aseiad Athro	46	57	65
------------------------------------	----	----	----

Music/Cerddoriaeth

Teacher Assessment Aseiad Athro	56	67	80
------------------------------------	----	----	----

Physical Education/Addysg Gorfforol

Teacher Assessment Aseiad Athro	62	69	83
------------------------------------	----	----	----

Welsh Second Language/Cymraeg Ail Iaith

Teacher Assessment Aseiad Athro	35	52	65
------------------------------------	----	----	----

Number of schools/Nifer yr ysgolion = 56

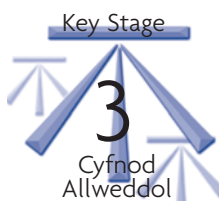


Table 3: Schools with 16-20 per cent eligible for FSM

Tabl 3: Ysgolion 16-20 y cant yn gymwys i gael PYD

Percentage of pupils achieving level 5 or above/Canran y disgyblion yn cyrraedd lefel 5 neu uwch

	Lower Quartile Chwartzel Isaf	Median Canolrif	Upper Quartile Chwartzel Uchaf
English/Saesneg			
Teacher Assessment Asesiad Athro	58	65	69
Test Prawf	54	63	67
Mathematics/Mathemateg			
Teacher Assessment Asesiad Athro	61	68	74
Test Prawf	59	67	72
Science/Gwyddoniaeth			
Teacher Assessment Asesiad Athro	57	67	75
Test Prawf	60	67	76
Core Subject Indicator/Dangosydd Pynciau Craidd			
Teacher Assessment Asesiad Athro	44	49	58
Test Prawf	44	50	59
Art/Celf			
Teacher Assessment Asesiad Athro	63	72	80
Design & Technology/Dylunio a Thechnoleg			
Teacher Assessment Asesiad Athro	61	72	78
Geography/Daeryddiaeth			
Teacher Assessment Asesiad Athro	56	67	75
History/Hanes			
Teacher Assessment Asesiad Athro	54	64	70
Information Technology/Technoleg Gwybodaeth			
Teacher Assessment Asesiad Athro	57	71	80
Modern Foreign Language/Ieithoedd Fodern			
Teacher Assessment Asesiad Athro	33	46	60
Music/Cerddoriaeth			
Teacher Assessment Asesiad Athro	55	63	75
Physical Education/Addysg Gorfforol			
Teacher Assessment Asesiad Athro	53	70	81
Welsh Second Language/Cymraeg Ail Iaith			
Teacher Assessment Asesiad Athro	32	47	62

Number of schools/Nifer yr ysgolion = 45

Table 4: Schools with 21-30 per cent eligible for FSM

Tabl 4: Ysgolion 21-30 y cant yn gymwys i gael PYD

Percentage of pupils achieving level 5 or above/Canran y disgyblion yn cyrraedd lefel 5 neu uwch



	Lower Quartile Chwarterel Isaf	Median Canolrif	Upper Quartile Chwarterel Uchaf
English/Saesneg			
Teacher Assessment Aseiad Athro	50	55	60
Test Prawf	50	53	60
Mathematics/Mathemateg			
Teacher Assessment Aseiad Athro	55	62	67
Test Prawf	55	59	64
Science/Gwyddoniaeth			
Teacher Assessment Aseiad Athro	53	61	69
Test Prawf	55	61	67
Core Subject Indicator/Dangosydd Pynciau Craidd			
Teacher Assessment Aseiad Athro	40	45	52
Test Prawf	39	43	47
Art/Celf			
Teacher Assessment Aseiad Athro	57	65	74
Design & Technology/Dylunio a Thechnoleg			
Teacher Assessment Aseiad Athro	48	61	75
Geography/Daeryddiaeth			
Teacher Assessment Aseiad Athro	49	58	66
History/Hanes			
Teacher Assessment Aseiad Athro	52	56	67
Information Technology/Technoleg Gwybodaeth			
Teacher Assessment Aseiad Athro	49	66	73
Modern Foreign Language/Ieithoedd Fodern			
Teacher Assessment Aseiad Athro	34	41	53
Music/Cerddoriaeth			
Teacher Assessment Aseiad Athro	46	58	70
Physical Education/Addysg Gorfforol			
Teacher Assessment Aseiad Athro	46	61	75
Welsh Second Language/Cymraeg Ail Iaith			
Teacher Assessment Aseiad Athro	23	37	46

Number of schools/Nifer yr ysgolion = 41

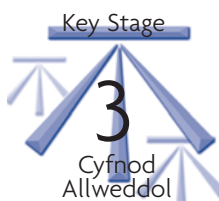


Table 5: Schools with 31 per cent eligible for FSM

Tabl 5: Ysgolion 31 y cant yn gymwys i gael PYD

Percentage of pupils achieving level 5 or above/Canran y disgyblion yn cyrraedd lefel 5 neu uwch

English/Saesneg		Lower Quartile Chwartzel Isaf		Median Canolrif		Upper Quartile Chwartzel Uchaf	
Teacher Assessment Asesiad Athro		40		46		51	
Test Prawf		36		42		47	

Mathematics/Mathemateg

Teacher Assessment Asesiad Athro		45		50		57	
Test Prawf		42		48		55	

Science/Gwyddoniaeth

Teacher Assessment Asesiad Athro		41		52		55	
Test Prawf		43		49		54	

Core Subject Indicator/Dangosydd Pynciau Craidd

Teacher Assessment Asesiad Athro		28		35		40	
Test Prawf		27		34		37	

Art/Celf		Lower Quartile Chwartzel Isaf		Median Canolrif		Upper Quartile Chwartzel Uchaf	
Teacher Assessment Asesiad Athro		40		56		71	

Design & Technology/Dylunio a Thechnoleg

Teacher Assessment Asesiad Athro		42		50		56	
-------------------------------------	--	----	--	----	--	----	--

Geography/Daeryddiaeth

Teacher Assessment Asesiad Athro		37		49		62	
-------------------------------------	--	----	--	----	--	----	--

History/Hanes

Teacher Assessment Asesiad Athro		38		49		56	
-------------------------------------	--	----	--	----	--	----	--

Information Technology/Technoleg Gwybodaeth

Teacher Assessment Asesiad Athro		32		48		58	
-------------------------------------	--	----	--	----	--	----	--

Modern Foreign Language/Ieithoedd Fodern

Teacher Assessment Asesiad Athro		23		33		42	
-------------------------------------	--	----	--	----	--	----	--

Music/Cerddoriaeth

Teacher Assessment Asesiad Athro		33		47		60	
-------------------------------------	--	----	--	----	--	----	--

Physical Education/Addysg Gorfforol

Teacher Assessment Asesiad Athro		33		57		72	
-------------------------------------	--	----	--	----	--	----	--

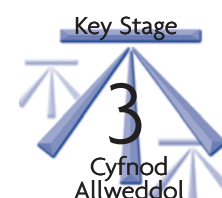
Welsh Second Language/Cymraeg Ail Iaith

Teacher Assessment Asesiad Athro		15		26		42	
-------------------------------------	--	----	--	----	--	----	--

Number of schools/Nifer yr ysgolion = 24

Table 6: Welsh speaking schools***Tabl 6: Ysgolion Cymraeg***

Percentage of pupils achieving level 5 or above/Canran y disgyblion yn cyrraedd lefel 5 neu



Welsh/Cymraeg		Lower Quartile Chwartzel Isaf		Median Canolrif		Upper Quartile Chwartzel Uchaf	
Teacher Assessment Asesiad Athro		68		77		81	
Test/Prawf		68		75		81	
English/Saesneg							
Teacher Assessment Asesiad Athro		65		71		77	
Test/Prawf		63		69		77	
Mathematics/Mathemateg							
Teacher Assessment Asesiad Athro		68		74		80	
Test/Prawf		68		75		80	
Science/Gwyddoniaeth							
Teacher Assessment Asesiad Athro		64		73		81	
Test/Prawf		64		72		80	
Core Subject Indicator/Dangosydd Pynciau Craidd							
Teacher Assessment Asesiad Athro		54		63		69	
Test/Prawf		52		60		67	
		Lower Quartile Chwartzel Isaf		Median Canolrif		Upper Quartile Chwartzel Uchaf	
Art/Celf							
Teacher Assessment Asesiad Athro		70		80		90	
Design & Technology/Dylunio a Thechnoleg							
Teacher Assessment Asesiad Athro		67		77		84	
Geography/Daeryddiaeth							
Teacher Assessment Asesiad Athro		66		70		80	
History/Hanes							
Teacher Assessment Asesiad Athro		65		69		78	
Information Technology/Technoleg Gwybodaeth							
Teacher Assessment Asesiad Athro		68		79		90	
Modern Foreign Language/Ieithoedd Fodern							
Teacher Assessment Asesiad Athro		43		56		65	
Music/Cerddoriaeth							
Teacher Assessment Asesiad Athro		65		73		82	
Physical Education/Addysg Gorfforol							
Teacher Assessment Asesiad Athro		63		72		81	
Welsh Second Language/Cymraeg Ail Iaith							
Teacher Assessment Asesiad Athro		-		-		-	

Number of schools/Nifer yr ysgolion = 53***As defined by Section 354(8) of the Education Act 1996/*Fel a ddiffinir gan Adran 354(8) o Ddeddf Addysg 1996**

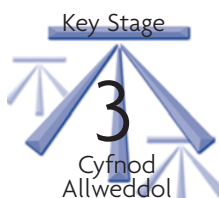


Table 7: English speaking schools

Tabl 7: Ysgolion Saesneg

Percentage of pupils achieving level 5 or above/Canran y disgyblion yn cyrraedd lefel 5 neu uwch

English/Saesneg		Lower Quartile Chwarter Isaf		Median Canolrif		Upper Quartile Chwarter Uchaf	
Teacher Assessment Asesiad Athro		53		63		71	
Test/Prawf		52		62		70	
Mathematics/Mathemateg							
Teacher Assessment Asesiad Athro		60		69		77	
Test/Prawf		57		68		75	
Science/Gwyddoniaeth							
Teacher Assessment Asesiad Athro		56		69		78	
Test/Prawf		58		71		80	
Core Subject Indicator/Dangosydd Pynciau Craidd							
Teacher Assessment Asesiad Atrho		43		51		63	
Test/Prawf		40		52		62	
Art/Celf							
Teacher Assessment Asesiad Athro		60		71		83	
Design & Technology/Dylunio a Thechnoleg							
Teacher Assessment Asesiad Athro		54		70		82	
Geography/Daeryddiaeth							
Teacher Assessment Asesiad Athro		55		67		76	
History/Hanes							
Teacher Assessment Asesiad Athro		54		65		76	
Information Technology/Technoleg Gwybodaeth							
Teacher Assessment Asesiad Athro		52		68		82	
Modern Foreign Language/Ieithoedd Fodern							
Teacher Assessment Asesiad Athro		35		48		61	
Music/Cerddoriaeth							
Teacher Assessment Asesiad Athro		49		63		80	
Physical Education/Addysg Gorfforol							
Teacher Assessment Asesiad Athro		52		68		82	
Welsh Second Language/Cymraeg Ail Iaith							
Teacher Assessment Asesiad Athro		31		45		56	

Number of schools/Nifer yr ysgolion = 174

Table 8: All secondary schools

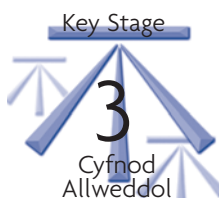
Tabl 8: Pob ysgol uwchradd

Percentage of pupils achieving level 5 or above/Canran y disgyblion yn cyrraedd lefel 5 neu uwch



		Lower Quartile Chwarterel Isaf	Median Canolrif	Upper Quartile Chwarterel Uchaf	
English/Saesneg					
Teacher Assessment Aseiad Athro		56	66	72	
Test/Prawf		54	64	71	
Welsh/Cymraeg*					
Teacher Assessment Aseiad Athro		64	76	81	
Test/Prawf		67	75	82	
Mathematics/Mathemateg					
Teacher Assessment Aseiad Athro		61	70	78	
Test/Prawf		59	69	76	
Science/Gwyddoniaeth					
Teacher Assessment Aseiad Athro		60	69	79	
Test/Prawf		59	71	79	
Core Subject Indicator/Dangosydd Pynciau Craidd					
Teacher Assessment Aseiad Athro		44	55	65	
Test/Prawf		43	55	63	
		Lower Quartile Chwarterel Isaf	Median Canolrif	Upper Quartile Chwarterel Uchaf	
Art/Celf					
Teacher Assessment Aseiad Athro		63	73	84	
Design & Technology/Dylunio a Thechnoleg					
Teacher Assessment Aseiad Athro		58	72	83	
Geography/Daeryddiaeth					
Teacher Assessment Aseiad Athro		58	69	77	
History/Hanes					
Teacher Assessment Aseiad Athro		56	67	77	
Information Technology/Technoleg Gwybodaeth					
Teacher Assessment Aseiad Athro		57	71	83	
Modern Foreign Language/Ieithoedd Fodern					
Teacher Assessment Aseiad Athro		38	50	63	
Music/Cerddoriaeth					
Teacher Assessment Aseiad Athro		55	67	80	
Physical Education/Addysg Gorfforol					
Teacher Assessment Aseiad Athro		54	70	82	
Welsh Second Language/Cymraeg Ail Iaith					
Teacher Assessment Aseiad Athro		32	47	60	

Number of schools/Nifer yr ysgolion = 227,68



Tabl 9: Welsh speaking schools - Summary table

Tabl 9: Ysgolion Cymraeg - Tabl crynodeb

Percentage of pupils achieving level 5 or above/Canran y disgyblion yn cyrraedd lefel 5 neu uwch

Up to 10 per cent Hyd at 10 y cant	FSM band/Band PYD				31 per cent or more 31 y cant neu ragor	All Schools Pob Ysgol
	11-15	16-20	21-30			

English/Saesneg

Teacher Assessment Asesiad Athro	76	68	63	64	-	71
Test/Prawf	74	68	61	64	-	70

Welsh/Cymraeg

Teacher Assessment Asesiad Athro	77	74	68	73	-	74
Test/Prawf	77	74	66	69	-	74

Mathematics/Mathemateg

Teacher Assessment Asesiad Athro	78	73	65	64	-	74
Test/Prawf	79	70	61	61	-	73

Science/Gwyddoniaeth

Teacher Assessment Asesiad Athro	77	73	57	63	-	72
Test/Prawf	78	68	57	54	-	71

Core Subject Indicator/Dangosydd Pynciau Craidd

Teacher Assessment Asesiad Athro	67	61	48	53	-	61
Test/Prawf	67	57	48	47	-	60

Art/Celf

Teacher Assessment Asesiad Athro	81	80	70	79	-	79
-------------------------------------	----	----	----	----	---	----

Design & Technology/Dynlunio a Thechnoleg

Teacher Assessment Asesiad Athro	78	73	73	73	-	75
-------------------------------------	----	----	----	----	---	----

Geography/Daeryddiaeth

Teacher Assessment Asesiad Athro	76	71	64	71	-	72
-------------------------------------	----	----	----	----	---	----

History/Hanes

Teacher Assessment Asesiad Athro	76	73	63	76	-	73
-------------------------------------	----	----	----	----	---	----

Information Technology/Technoleg Gwybodaeth

Teacher Assessment Asesiad Athro	78	83	60	68	-	77
-------------------------------------	----	----	----	----	---	----

Modern Foreign Language/Ieithoedd Fodern

Teacher Assessment Asesiad Athro	57	52	53	43	-	54
-------------------------------------	----	----	----	----	---	----

Music/Cerddoriaeth

Teacher Assessment Asesiad Athro	75	68	70	68	-	71
-------------------------------------	----	----	----	----	---	----

Physical Education/Addysg Gorfforol

Teacher Assessment Asesiad Athro	73	70	70	62	-	71
-------------------------------------	----	----	----	----	---	----

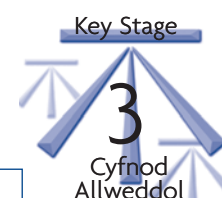
Welsh Second Language/Cymraeg Ail Iaith

Teacher Assessment Asesiad Athro	-	-	-	-	-	-
-------------------------------------	---	---	---	---	---	---

Table 10: English speaking schools - Summary table

Tabl 10: Ysgolion Saesneg - Tabl cynodeb

Percentage of pupils achieving level 5 or above/Canran y disgyblion yn cyrraedd lefel 5 neu uwch



FSM band/Band PYD					
Up to 10 per cent Hyd at 10 y cant	11-15	16-20	21-30	31 per cent or more 31 y cant neu ragor	All Schools Pob Ysgol

English/Saesneg

Teacher Assessment Asesiad Athro	79	67	64	55	45	64
Test/Prawf	77	67	61	54	42	62

Mathematics/Mathemateg

Teacher Assessment Asesiad Athro	82	73	68	60	-	69
Test/Prawf	80	71	66	59	-	67

Science/Gwyddoniaeth

Teacher Assessment Asesiad Athro	82	74	67	61	50	69
Test/Prawf	84	76	68	61	48	70

Core Subject Indicator/Dangosydd Pynciau Craidd

Teacher Assessment Asesiad Athro	69	57	52	45	34	54
Test/Prawf	69	58	50	44	33	53

Art/Celf

Teacher Assessment Asesiad Athro	80	78	70	64	60	72
----------------------------------	----	----	----	----	----	----

Design & Technology/Dynlunio a Thechnoleg

Teacher Assessment Asesiad Athro	81	72	70	60	52	69
----------------------------------	----	----	----	----	----	----

Geography/Daearyddiaeth

Teacher Assessment Asesiad Athro	81	71	66	56	49	66
----------------------------------	----	----	----	----	----	----

History/Hanes

Teacher Assessment Asesiad Athro	80	71	62	57	46	65
----------------------------------	----	----	----	----	----	----

Information Technology/Technoleg Gwybodaeth

Teacher Assessment Asesiad Athro	81	71	69	59	46	67
----------------------------------	----	----	----	----	----	----

Modern Foreign Language/Ieithoedd Fodern

Teacher Assessment Asesiad Athro	61	57	44	41	32	49
----------------------------------	----	----	----	----	----	----

Music/Cerddoriaeth

Teacher Assessment Asesiad Athro	79	67	63	56	44	64
----------------------------------	----	----	----	----	----	----

Physical Education/Addysg Gorfforol

Teacher Assessment Asesiad Athro	79	70	65	59	54	67
----------------------------------	----	----	----	----	----	----

Welsh Second Language/Cymraeg Ail Iaith

Teacher Assessment Asesiad Athro	55	52	42	35	29	44
----------------------------------	----	----	----	----	----	----

Table 11: All Secondary schools - summary table

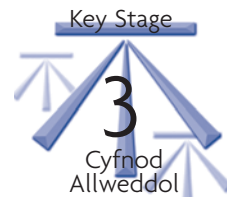
Tabl 11: Pob ysgol Uwchradd - tabl crynodeb

Percentage of pupils achieving level 5 or above/Canran y disgyblion yn cyrraedd lefel 5 neu uwch

	FSM band/Band PYD					All Schools Pob Ysgol
	Up to 10 per cent Hyd at 10 y cant	11-15	16-20	21-30	31 per cent or more 31 y cant neu ragor	
English/Saesneg						
Teacher Assessment Aseiad Athro	78	67	64	55	45	65
Test/Prawf	76	67	61	54	42	64
Welsh/Cymraeg						
Teacher Assessment Aseiad Athro	76	73	68	74	-	74
Test/Prawf	77	74	66	69	-	74
Mathematics/Mathemateg						
Teacher Assessment Aseiad Athro	81	73	67	60	50	69
Test/Prawf	80	71	66	59	49	68
Science/Gwyddoniaeth						
Teacher Assessment Aseiad Athro	80	74	65	61	50	69
Test/Prawf	82	74	67	61	48	70
Core Subject Indicator/Dangosydd Pynciau Craidd						
Teacher Assessment Aseiad Athro	69	58	51	45	34	55
Test/Prawf	68	57	50	44	33	54
Art/Celf						
Teacher Assessment Aseiad Athro	81	78	70	64	60	73
Design & Technology/Dynlunio a Thechnoleg						
Teacher Assessment Aseiad Athro	80	73	70	60	52	70
Geography/Daearyddiaeth						
Teacher Assessment Aseiad Athro	79	71	66	57	49	68
History/Hanes						
Teacher Assessment Aseiad Athro	79	72	62	57	46	67
Information Technology/Technoleg Gwybodaeth						
Teacher Assessment Aseiad Athro	80	74	68	60	46	69
Modern Foreign Language/Ieithoedd Fodern						
Teacher Assessment Aseiad Athro	60	55	45	41	32	50
Music/Cerddoriaeth						
Teacher Assessment Aseiad Athro	78	67	64	57	44	65
Physical Education/Addysg Gorfforol						
Teacher Assessment Aseiad Athro	77	70	65	59	54	68
Welsh Second Language/Cymraeg Ail Iaith						
Teacher Assessment Aseiad Athro	56	52	43	35	29	45

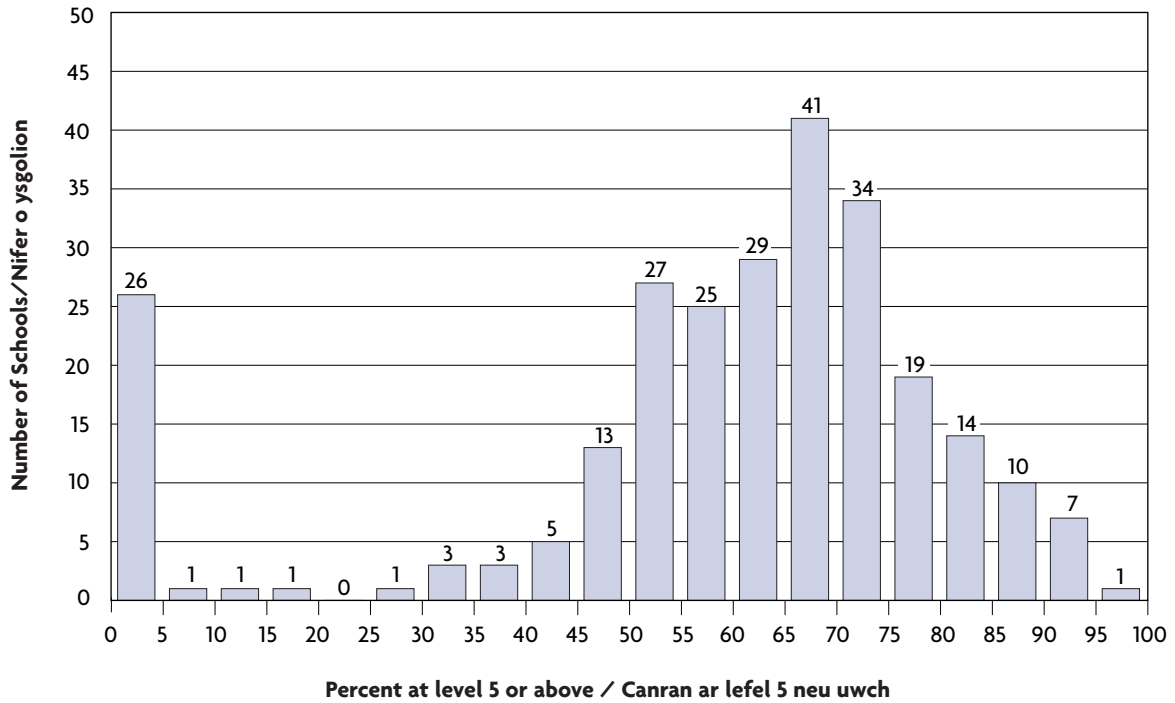
Performance Bands/Bandiau Perfformiad

Core subjects/Pynciau Craidd



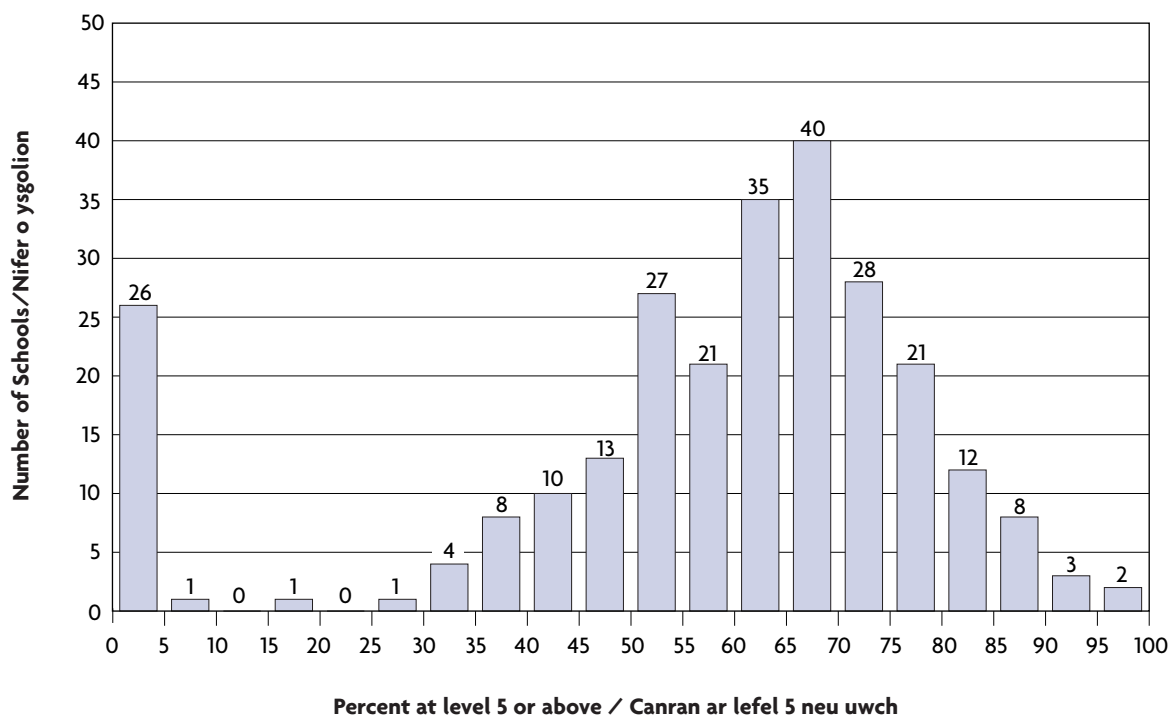
English/Saesneg

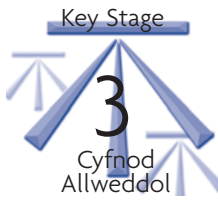
Teacher Assessments/Aseidiadau Athrawon



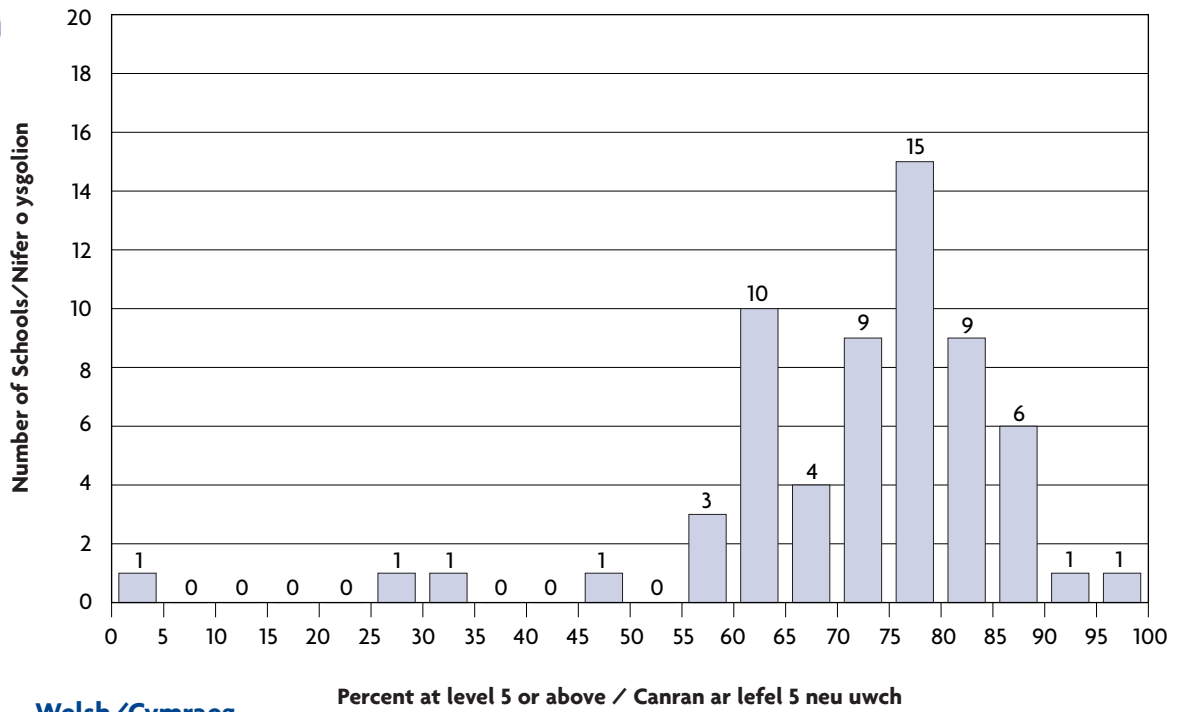
English/Saesneg

Tests/Profion

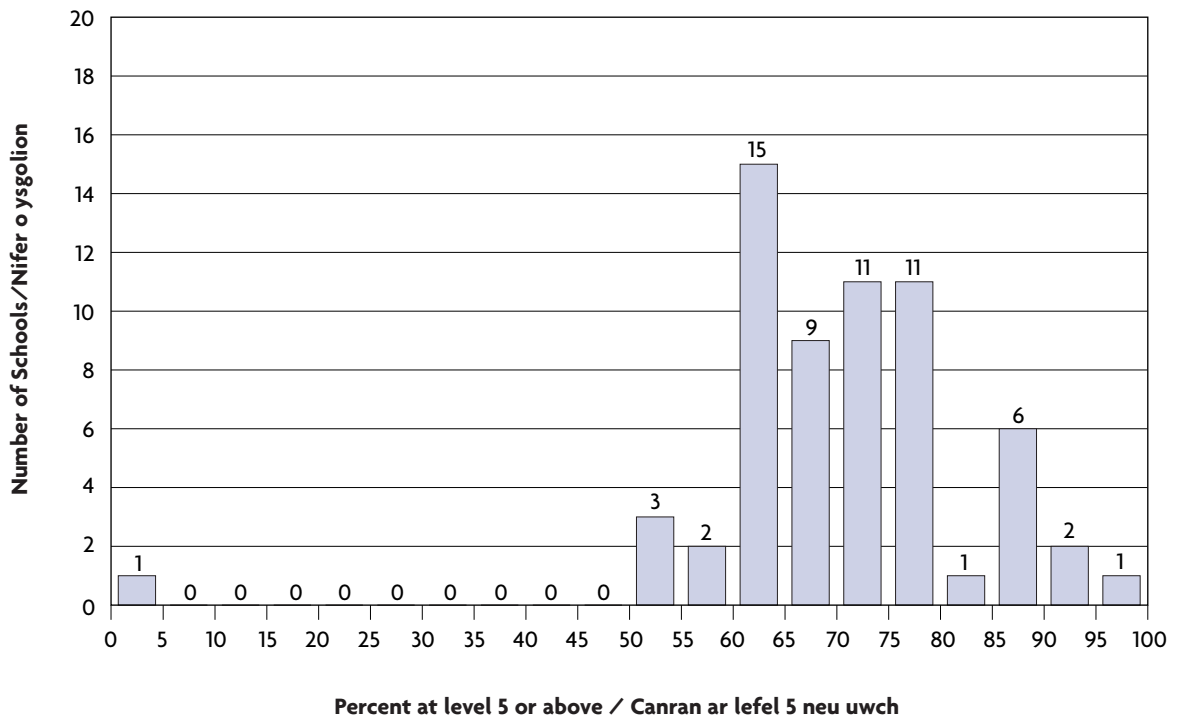




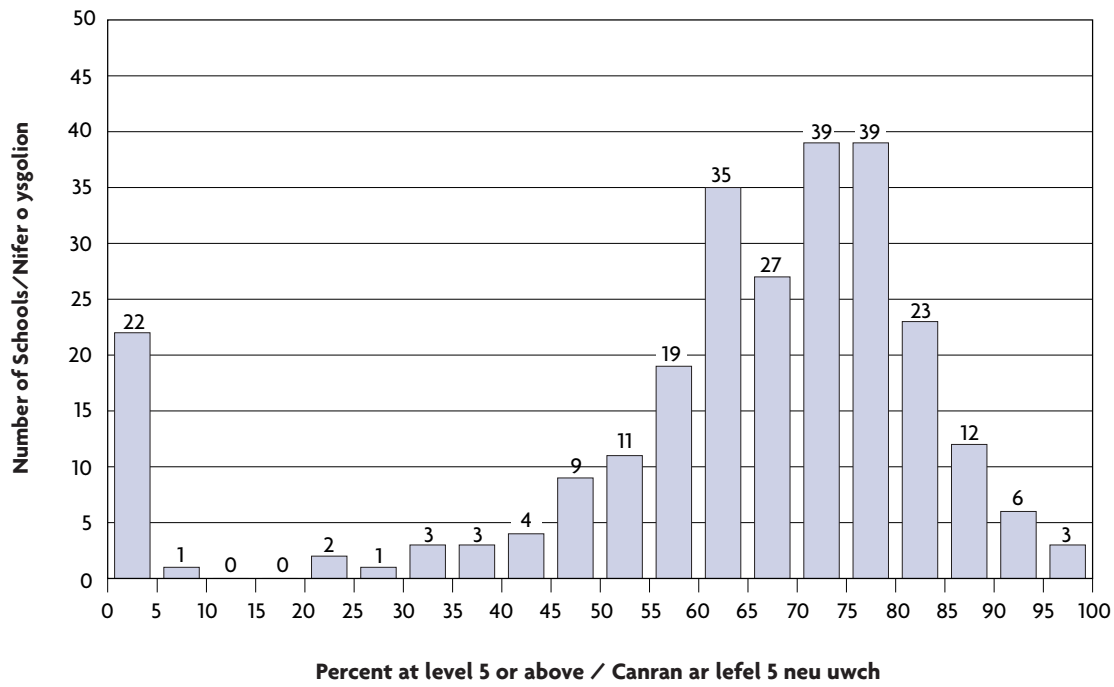
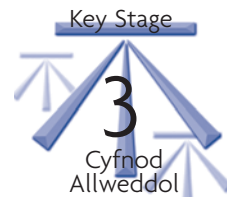
Welsh/Cymraeg
Teacher Assessments/Aseidiadau Athrawon



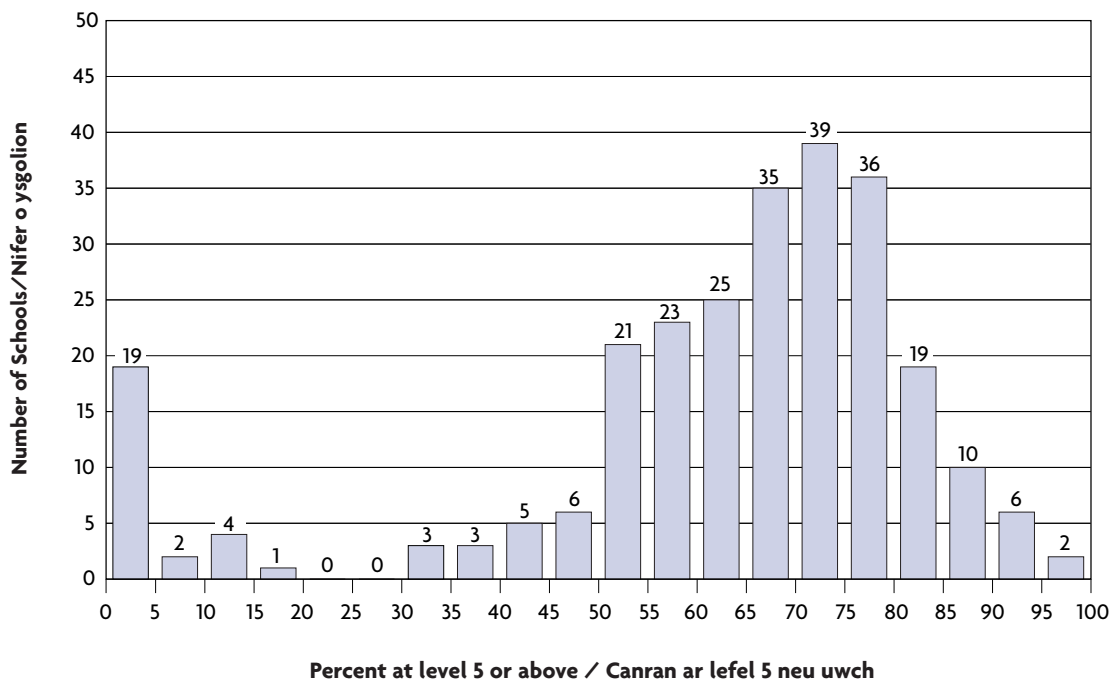
Welsh/Cymraeg
Tests/Profion

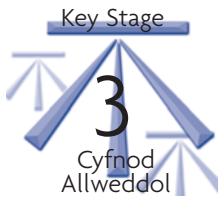


Mathematics/Mathemateg
Teacher Assessments/Aseidiadau Athrawon

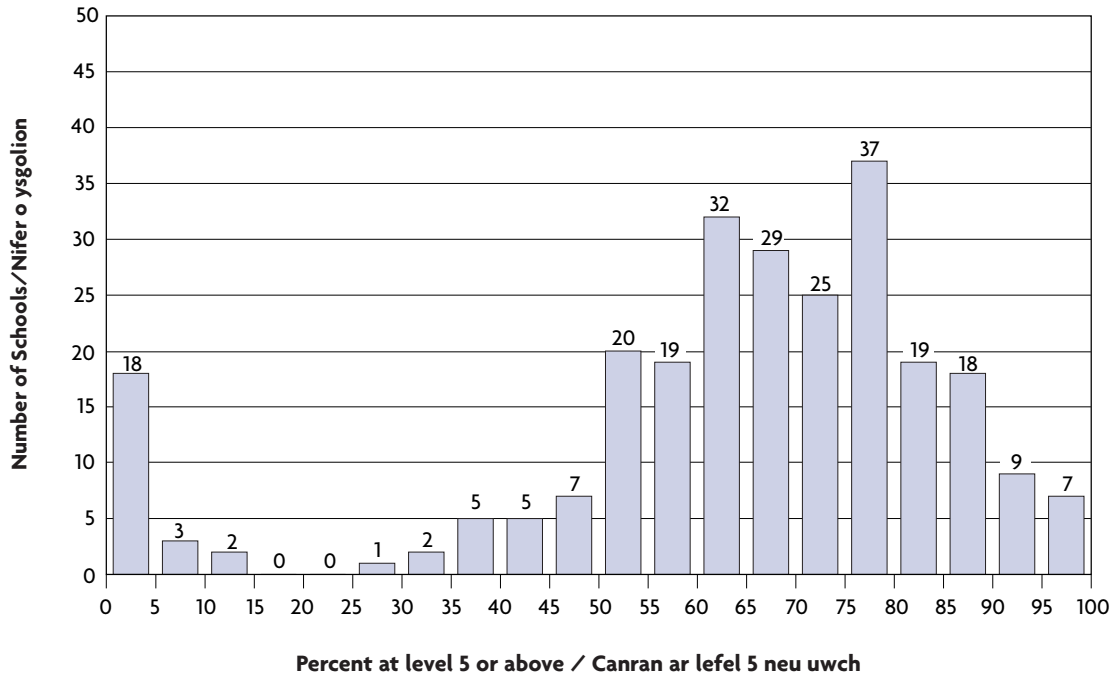


Mathematics/Mathemateg
Tests/Profion

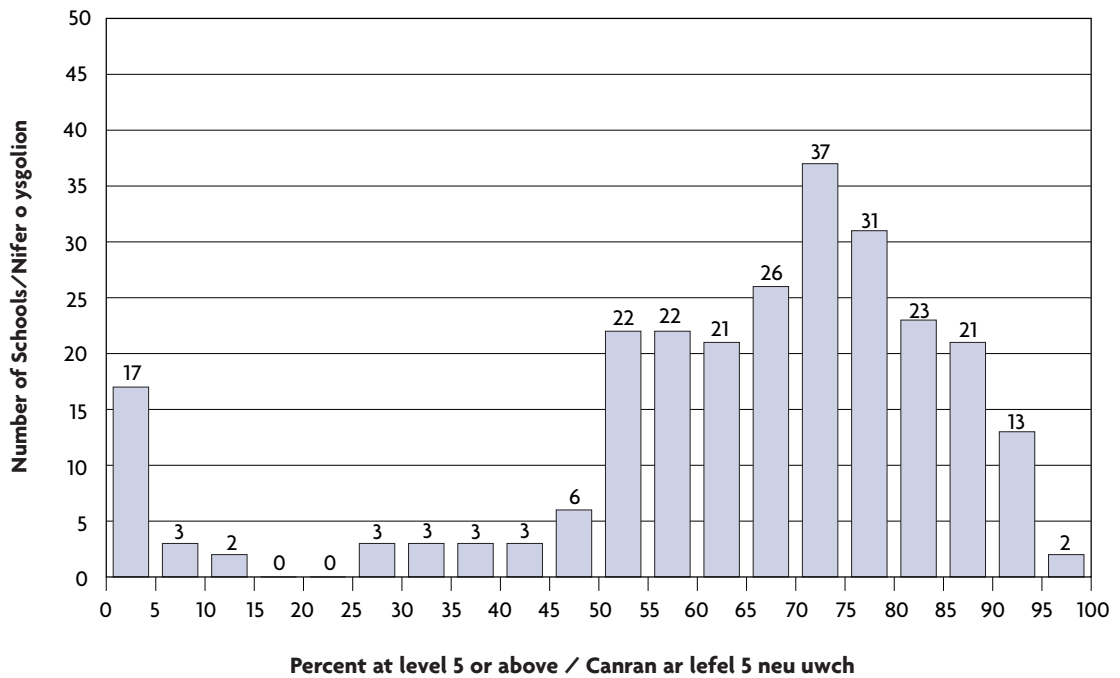




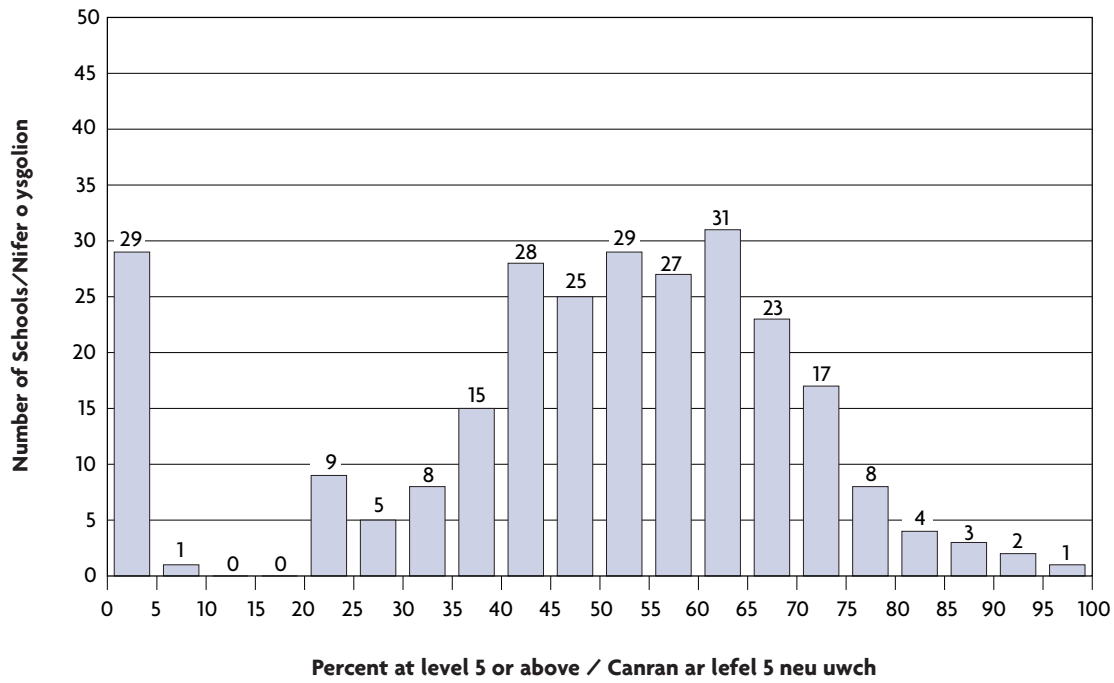
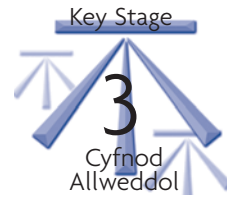
Science/Gwyddoniaeth
Teacher Assessments/Asesiadau Athrawon



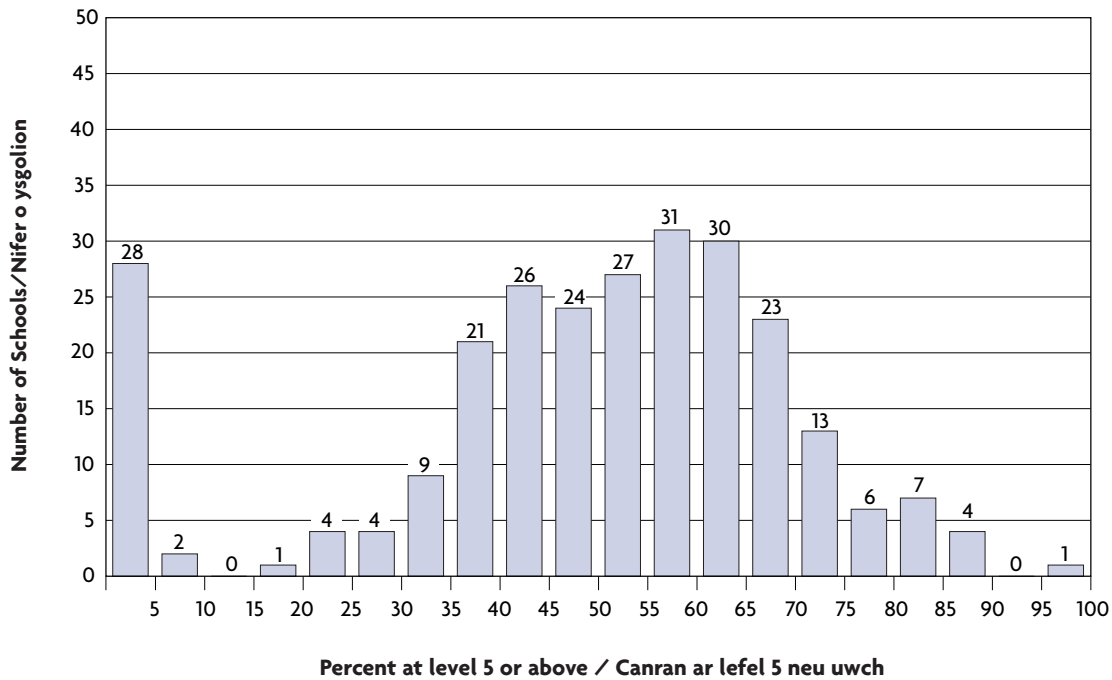
Science/Gwyddoniaeth
Tests/Profion

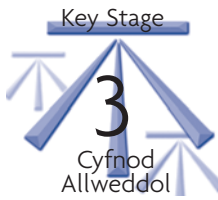


Core Subject Indicator/Dangosydd Pynciau Craidd
Teacher Assessments/Aesiadau Athrawon



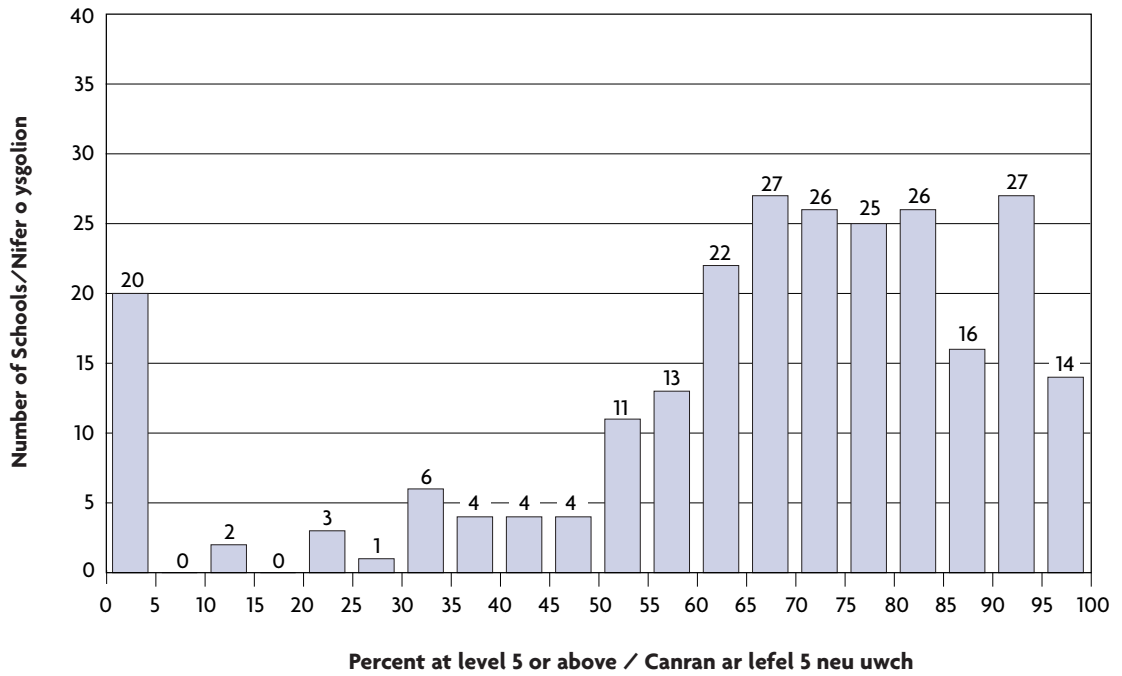
Core Subject Indicator/Dangosydd Pynciau Craidd
Tests/Profion



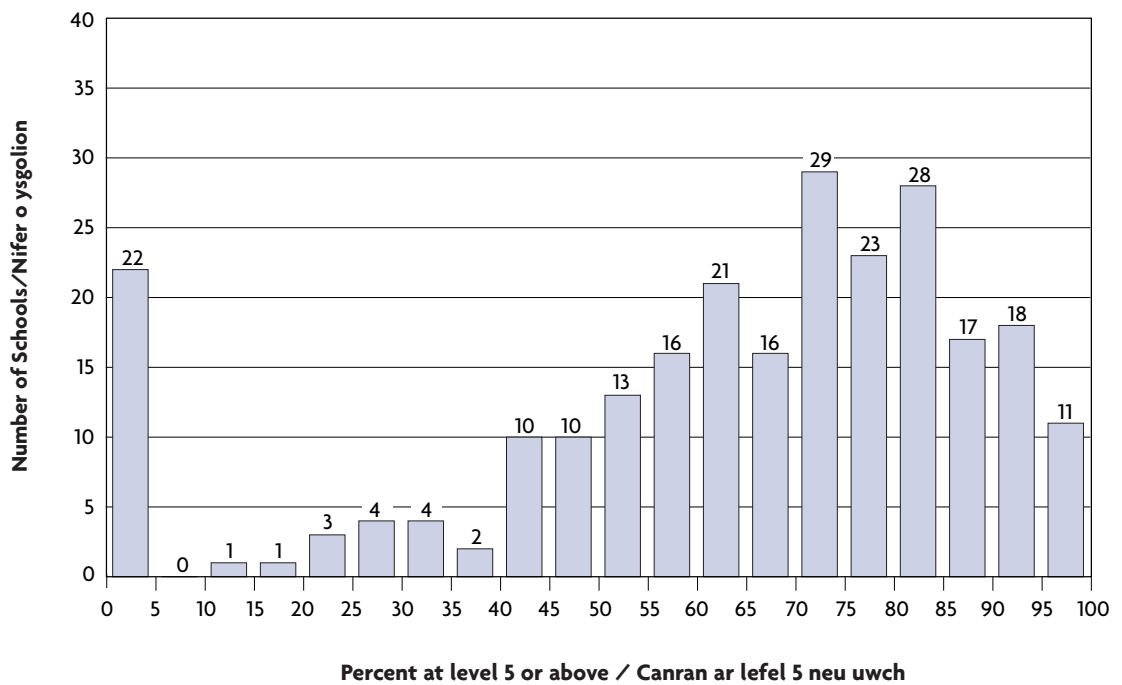


Performance Bands/Bandiau Perfformiad Non Core subjects/Pynciau Craidd

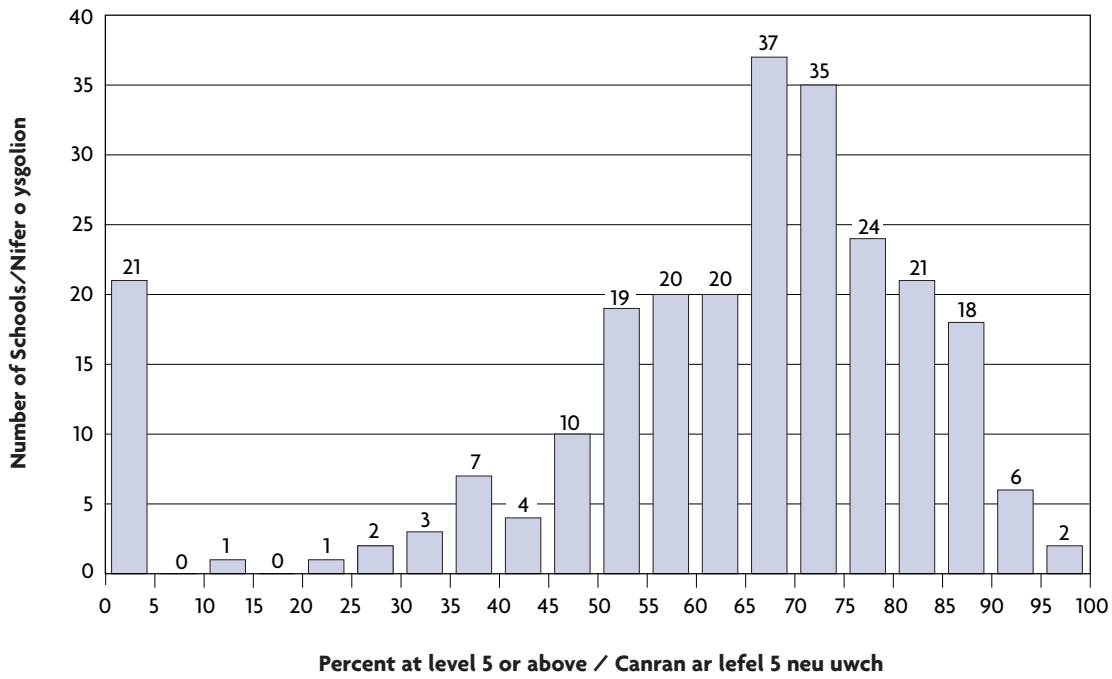
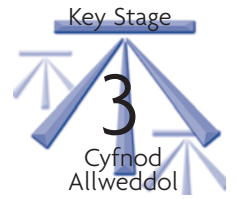
Art/Celf



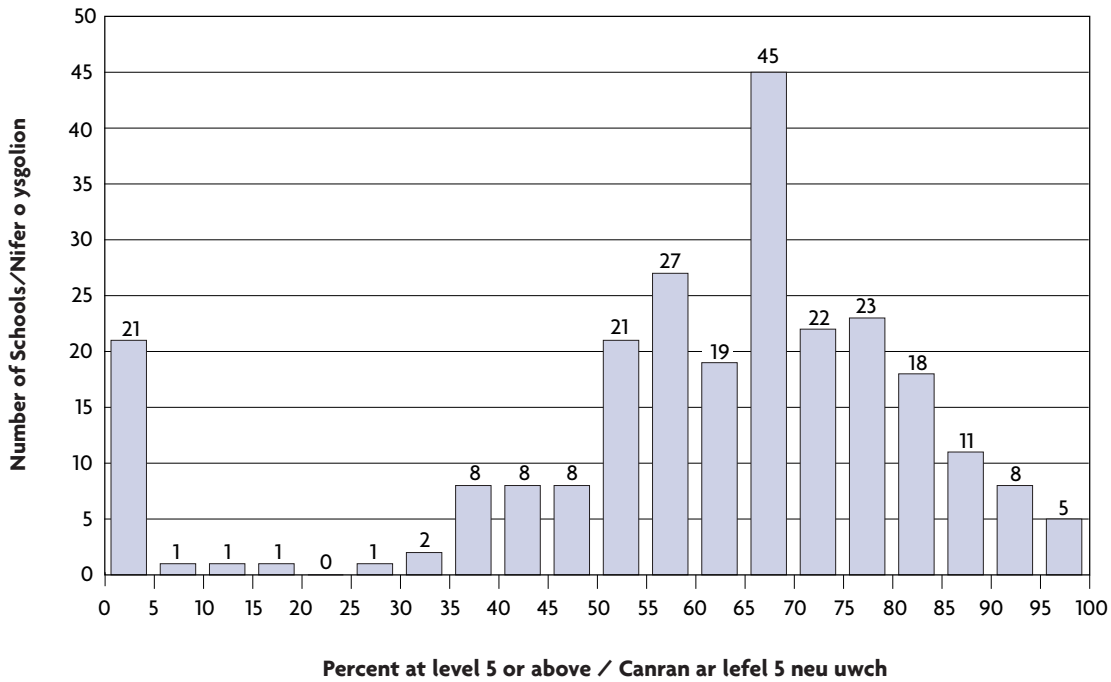
Design and Technology/Dylunio a Thechnoleg

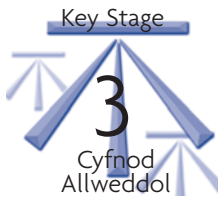


Geography/Daearyddiaeth

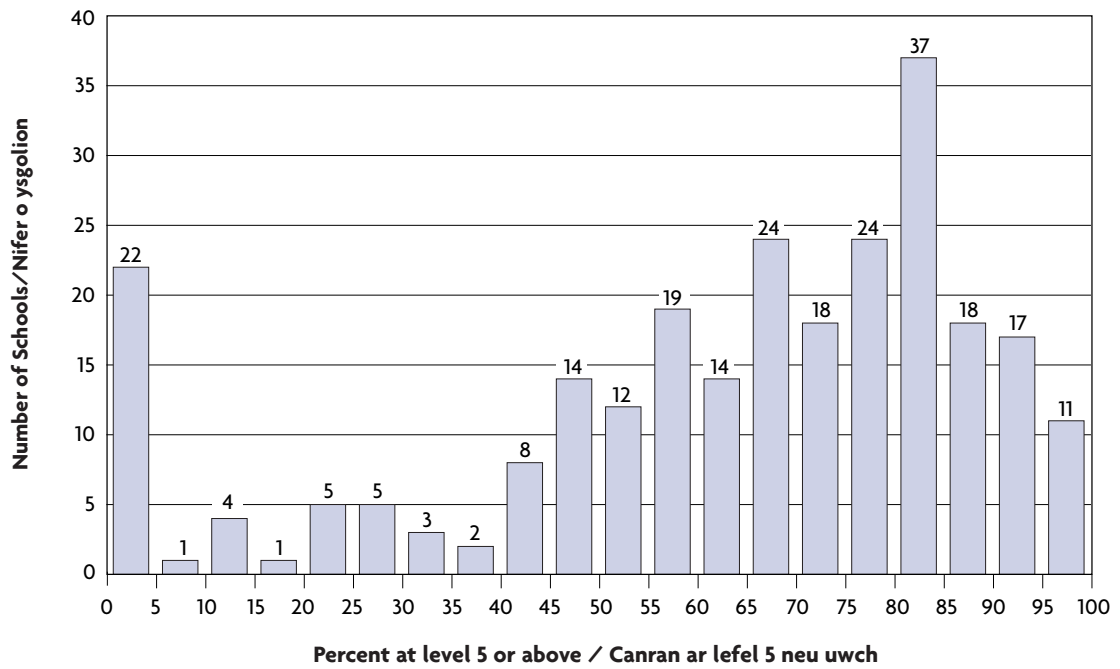


History/Hanes

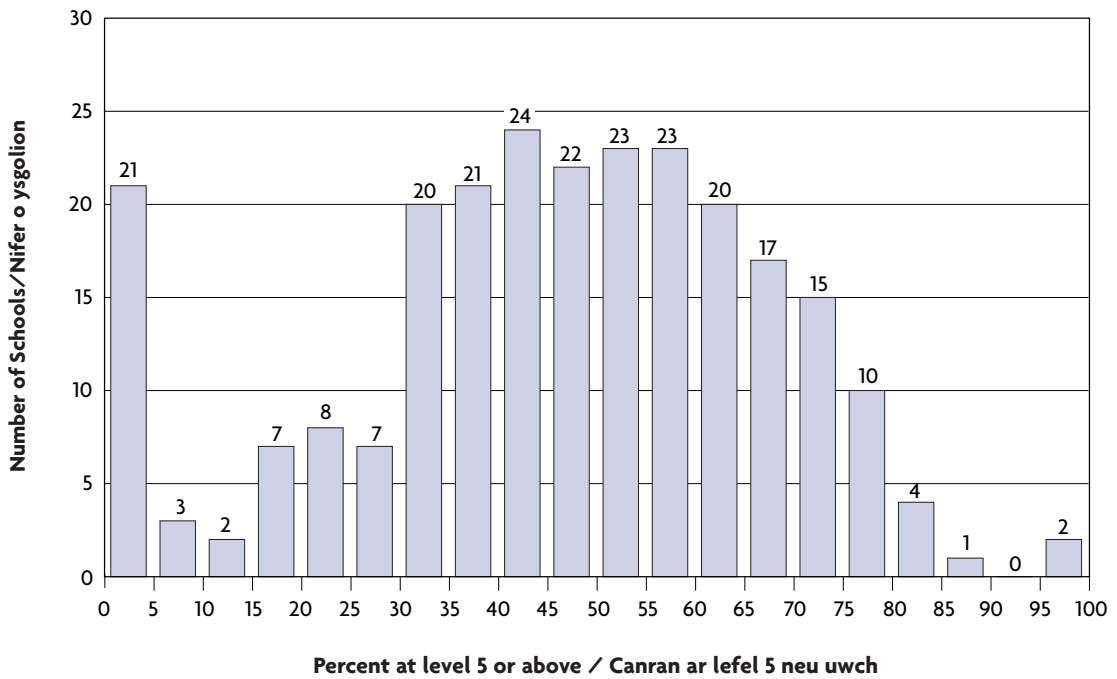




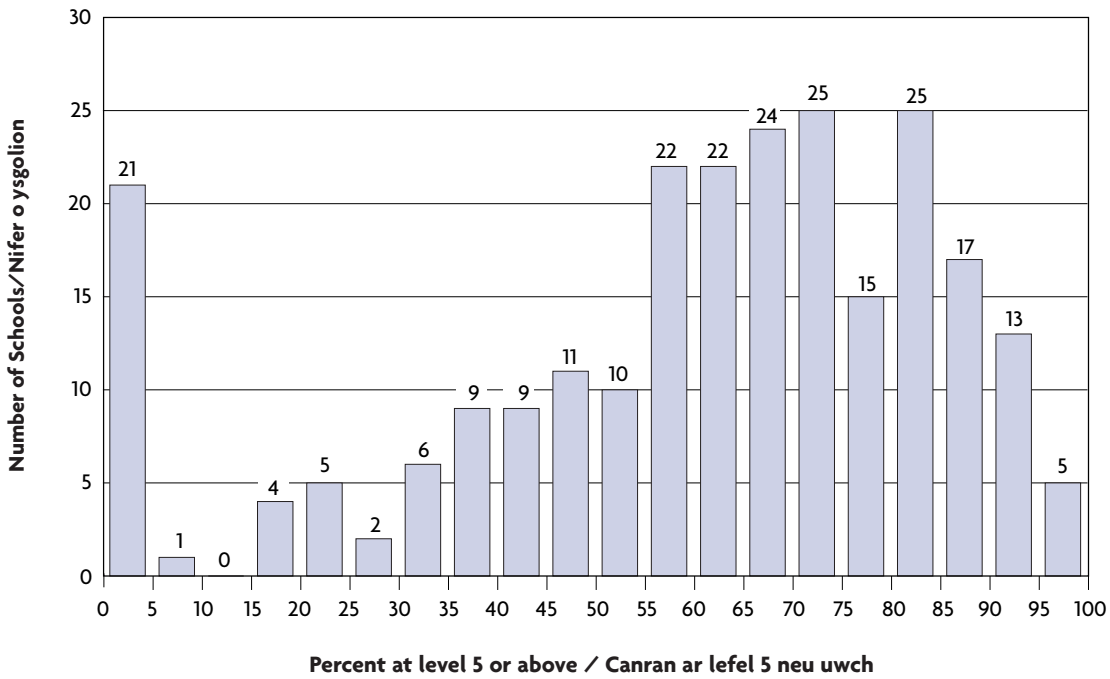
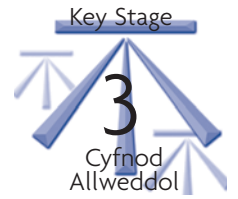
Information Technology/Technolog Gwybodaeth



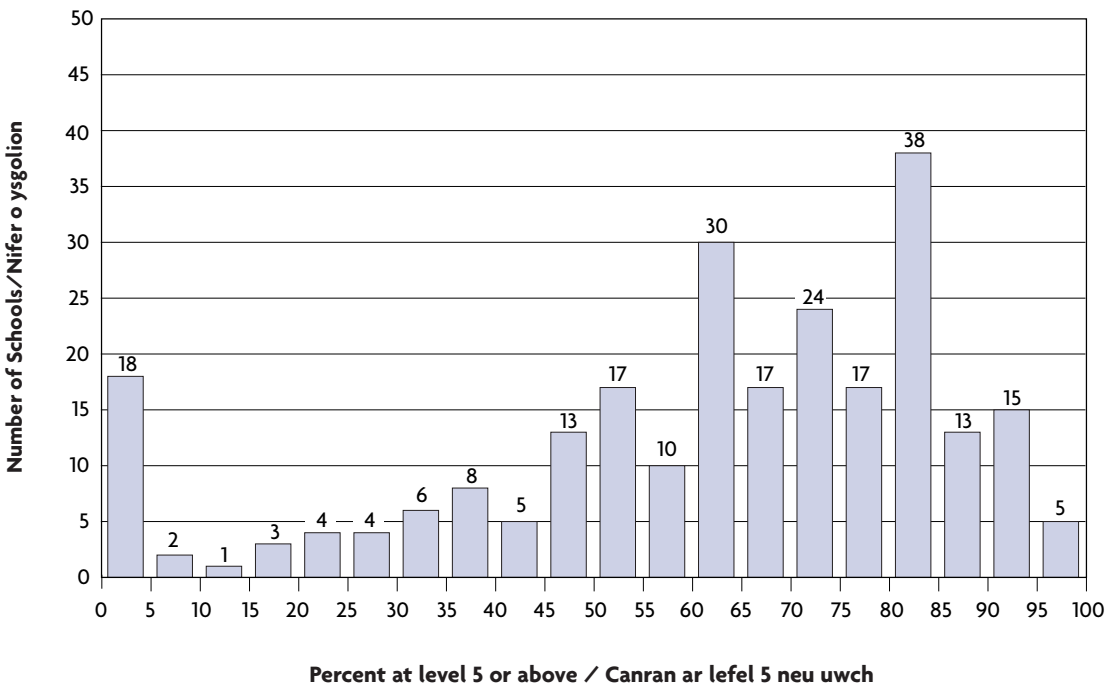
Modern Foreign Language/leithoedd Tramor Modern

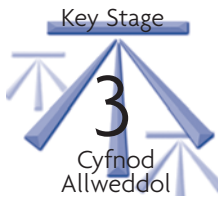


Music/Cerddoriaeth



Physical Education/Addysg Gorfforol





Welsh Second Language/Cymraeg Ail iaith

