



Department
for Education

Special educational needs: an analysis and summary of data sources

May 2016

Contents

Introduction	3
Updates in this edition	5
Prevalence and characteristics	6
Key trends	6
Type of need	7
Characteristics	7
Placement type	8
Looked after children with SEN	8
Attainment	9
Early Years Foundation Stage Profile (EYFSP)	9
Phonics screening check	9
Key Stage 1	9
Key Stage 2	9
Key Stage 4	9
Post-16 – attainment by age 19	10
Looked after children with SEN	10
Progression	11
Key Stage 1 to Key Stage 2 progression	11
Key Stage 2 to Key Stage 4 progression	12
Preparation for Adulthood	13
Post-16 learner participation	13
Destinations	13
Employment status for adults with learning difficulties	13
Accommodation status for adults with learning difficulties	13
Absence and exclusions	14
Absence	14
Exclusions	14
Experience of the SEND system	15
Timeliness of issuing statements and EHC plans	15
Appeals registered with the SEND tribunal	16
Related information	17
Local Authority Interactive Tool (LAIT)	17
LG Inform	17

Introduction

This document provides a combination of analysis and links to the key data sources on children and young people with special educational needs (SEN). This is the second release in this format and follows on from the initial publication in November 2015. The document will now be updated twice a year to improve the timeliness of the information. In previous years the document was updated annually, with some of the information quickly becoming out of date.

You may also wish to use this publication alongside benchmarking data tools, such as the Local Authority Interactive Tool (LAIT) and LG Inform. Further details are provided on page 17.

The table below lists the topics included in this publication with a link to the source data and whether time series and LA level data is available. Commentary on the data trends can be found by clicking on the link in the publication title column.

Topic	Publication title link	Time series data available?	LA level data by SEN available?	When next published and how often updated
Prevalence and characteristics	‘Special educational needs in England: January 2015’	Yes	Yes	July 2016, annual
Early years Foundation Stage profile (EYFSP)	‘Early years foundation stage profile results: 2014 to 2015’	Yes	Yes	November 2016, annual
Phonics screening check and Key Stage 1 attainment	‘Phonics screening check and key stage 1 assessments: England 2015’	Yes	Yes	September 2016, annual
Key Stage 2 attainment	‘National curriculum assessments at key stage 2: 2015 (revised)’	Yes	Yes	December 2016, annual
Key Stage 4 attainment	‘Revised GCSE and equivalent results in England: 2014 to 2015’	Yes	Yes	January 2017, annual
Attainment by age 19	‘Level 2 and 3 attainment by young people aged 19 in 2015’	Yes	Yes	April 2017, annual
Post-16 participation	‘Participation in education and training: local authority figures’	Yes	Yes	June 2016, 3 times a year
Further Education learning difficulty and disability numbers	‘FE data library: equality and diversity’	Yes	No	December 2016, annual
Destinations measures	‘Destinations of key stage 4 and key stage 5 pupils: 2013 to 2014’	Yes	Yes	October 2016, annual

Topic	Publication title link	Time series data available?	LA level data by SEN available?	When next published and how often updated
Absence	‘Pupil absence in schools in England: 2014 to 2015’	Yes	Yes	March 2017, annual
Exclusions	‘Permanent and fixed-period exclusions in England: 2013 to 2014’	Yes	No	July 2016, annual
Timeliness of issuing statements and EHC plans	‘Statements of SEN and EHC plans: England 2016’	Yes	Yes	May 2017, annual
Appeals registered with the SEND tribunal	‘Tribunals statistics’	Yes	Yes	December 2016, quarterly
Outcomes for looked after children	‘Outcomes for children looked after by LAs: 31 March 2015’	Yes	Yes	March 2017, annual

Updates in this edition

This publication is updated twice a year; this edition contains updates to the following data sources:

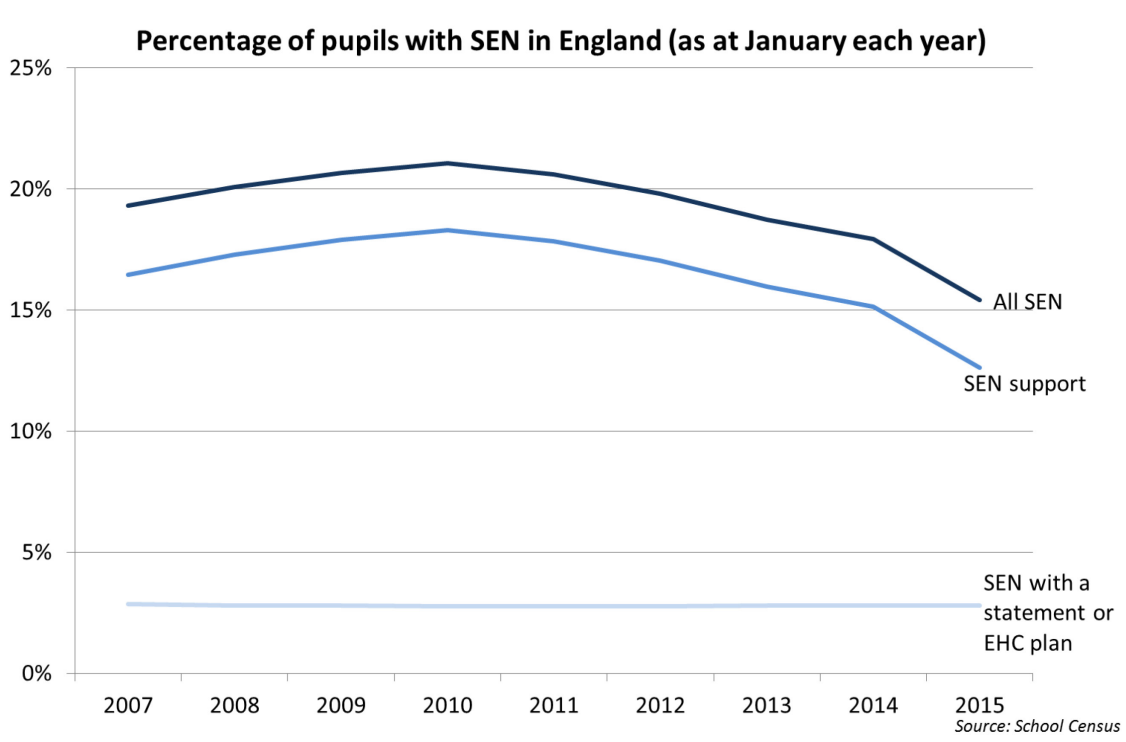
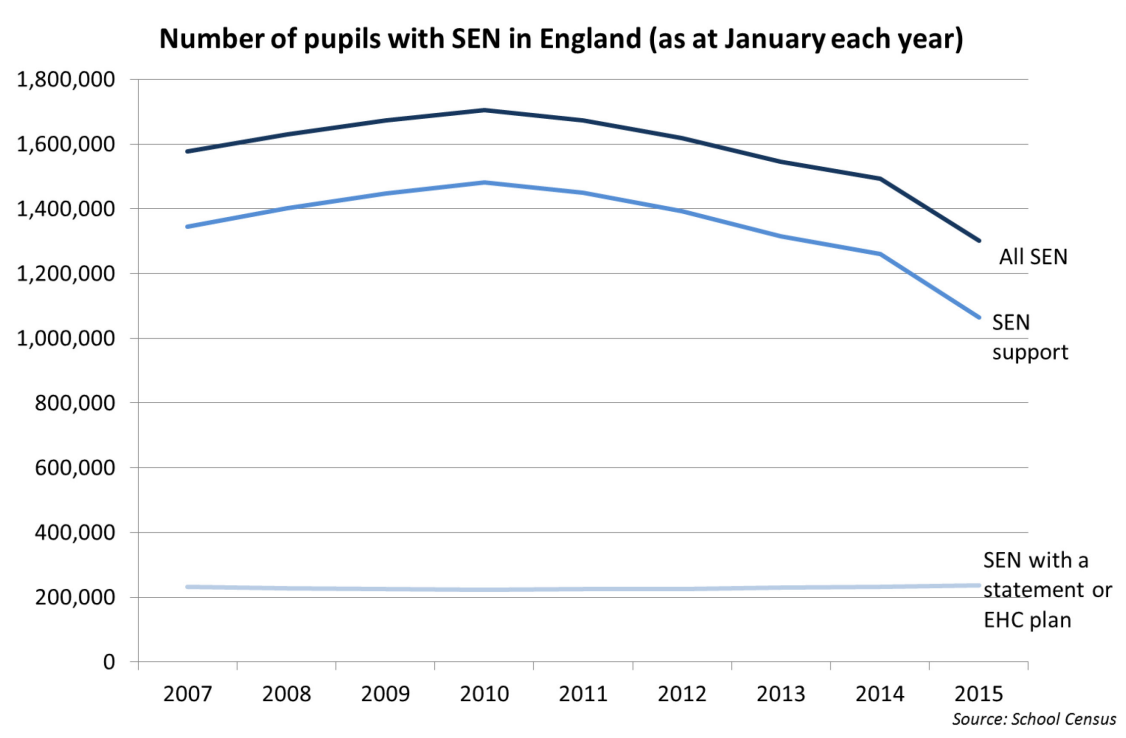
EYFSP attainment by SEN – 2014/15 data published in November 2015
KS2 attainment by SEN – 2014/15 data published in December 2015
KS4 attainment by SEN – 2014/15 data published January 2016
Tribunals statistics – 2014/15 data published December 2015, latest quarterly data published March 2016
Participation for 16/ 17 year olds – latest quarterly data published March 2016
Absence by SEN – 2014/15 data published March 2016
Attainment by age 19 – 2014/15 data published April 2016
Timeliness of issuing statements and EHC plans – 2016 SEN2 data published May 2016

This edition also includes the following additional information which was not covered in the previous publication:

Post-16 Further Education participation data, by learning difficulty and disability status
Employment and Accommodation statistics for those with learning difficulties from Department of Health Outcomes Framework
Outcomes for looked after children with special educational needs

Prevalence and characteristics

Key trends



There has been a decline in the proportion with SEN since 2010 when 21.1% of pupils had SEN. In January 2015 there was a steeper drop and the number of pupils with SEN decreased from 1.49 million pupils (17.9%) in January 2014 to 1.30 million pupils (15.4%).

In 2015 the proportion of pupils with SEN without a statement/ Education, Health and Care (EHC) plan fell. This may be due to more accurate identification of those with SEN following implementation of the SEN and disability system reforms. The proportion with a statement or EHC plan shows no change.

Pupils with SEN are currently categorised as follows:

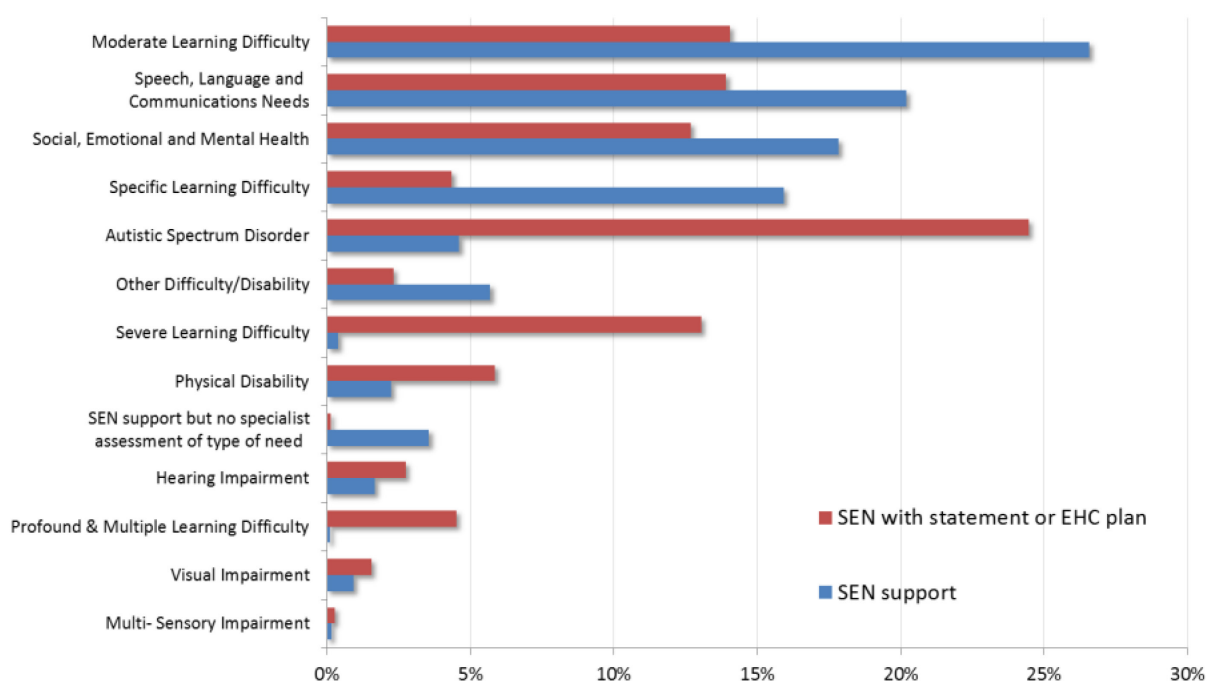
SEN support: Extra or different help is given from that provided as part of the school's usual curriculum. The class teacher and SEN Coordinator (SENCO) may receive advice or support from outside specialists. This category replaces the former 'School Action' and 'School Action Plus' categories.

Statement/ Education, Health and Care (EHC) plan: A pupil has a statement of SEN or an EHC plan when a local authority issued one following a formal assessment. This document sets out the child's needs and the extra help they should receive.

Transferring children with statements to EHC plans will be phased and timescales set out in [Transition to the new 0 to 25 special educational needs and disability system: Departmental advice for local authorities and their partners \(March 2015\)](#).

Type of need

Percentage of pupils by primary type of need and SEN provision, January 2015



Source: School Census

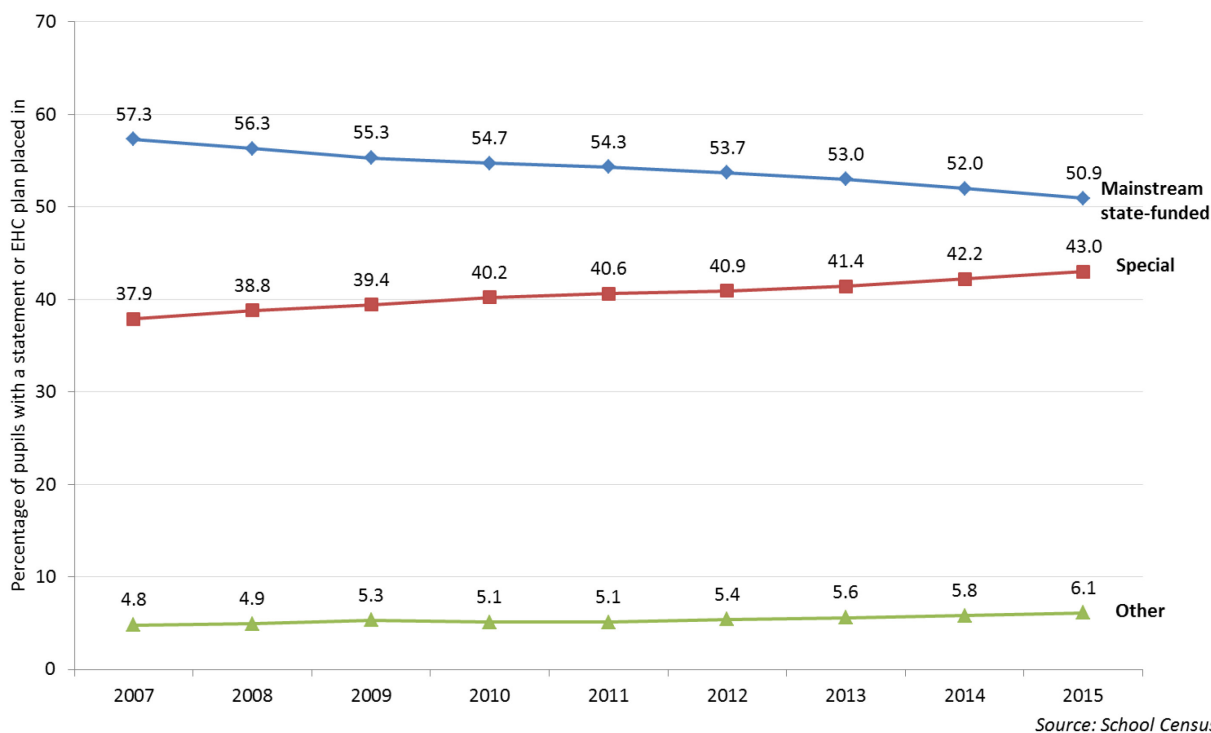
Autistic spectrum disorder was the most common need for those with a statement or EHC plan, 24.5% of pupils with a statement or EHC plan in January 2015 had their primary need recorded as this type. For those on SEN support, moderate learning difficulty was the most common type of need, 26.6% of pupils had their primary need recorded as this type.

Characteristics

SEN is more prevalent in boys - across all age groups and within state-funded primary, state-funded secondary and special schools 16.0% of boys are SEN support compared to 9.2% of girls. Older age groups are more likely to have a statement of SEN/ EHC plan. Pupils with SEN are more than twice as likely to be eligible for free school meals than those without SEN (28.2% compared to 12.8%).

Placement type

Percentage of pupils with a statement or EHC plan by placement, January 2015



The percentage of pupils with a statement or EHC plan who are placed in special schools has been increasing in recent years.

More information on prevalence and characteristics can be found in the following publication:

[‘Special educational needs in England: January 2015’](#) Next update due June/ July 2016

Looked after children with SEN

Prevalence: 60.5% of looked after children had a special educational need in 2014/15, which consists of 27.6% with a statement or EHC plan and 32.9% with SEN support. This compares to 50.2% of children in need with SEN and 15.4% of all children with SEN.

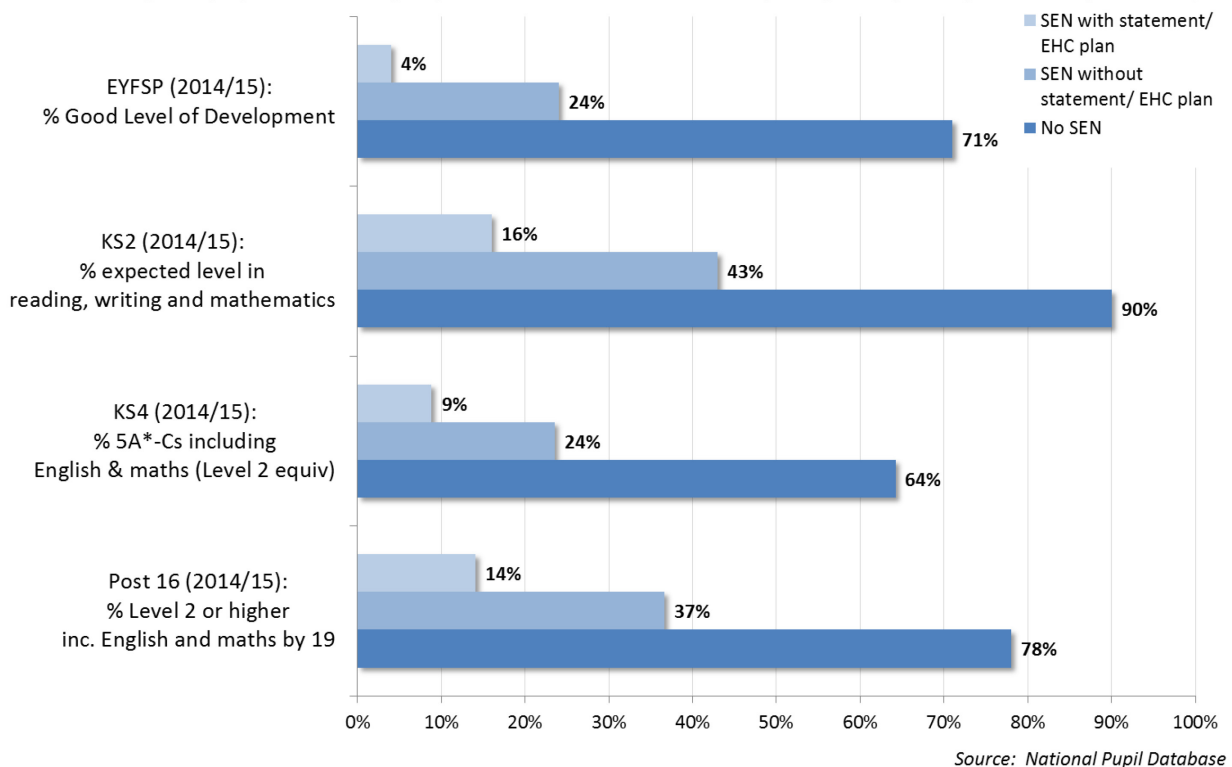
The most common type of need for looked after children was ‘Social, Emotional and Mental Health’ – 37.8% of looked after children with a statement or EHC plan had this type of need compared to 12.7% of all children with a statement or EHC plan.

More information on looked after children with special educational needs can be found in the following publication:

[‘Outcomes for children looked after by LAs: 31 March 2015’](#) Next update due March 2017

Attainment

Percentage of pupils achieving expected level at different Key Stages, by SEN provision (2014/15)



Early Years Foundation Stage Profile (EYFSP)

21% of pupils with SEN achieved a good level of development in 2014/15; this is 50 percentage points lower than pupils without SEN (71%).

Phonics screening check

The attainment gap in 2014/15 was 44 percentage points with 39% of pupils with SEN meeting the required standard compared to 83% of pupils with no SEN.

Key Stage 1

Pupils with SEN performed significantly worse than pupils without SEN in 2014/15 and the attainment gap has widened in some subjects (mathematics and science). The gap is largest in writing (44 percentage points), and smallest in mathematics (31 percentage points).

Key Stage 2

39% of pupils with SEN achieved the expected level in reading, writing and mathematics in 2014/15 compared to 90% of those with no SEN.

Key Stage 4

In 2014/15, 20.0% of pupils with SEN achieved 5+ GCSEs at A*-C or equivalent including English and mathematics, 44.2 percentage points lower than those with no SEN (64.2%). Note that due to reforms introduced in 2014 data is not comparable to earlier years.

Post-16 – attainment by age 19

32.8% of pupils with SEN achieved 5+ A*-C including English and mathematics by age 19 in 2014/15, which is 45.2 percentage points lower than pupils without SEN (78.0%).

Looked after children with SEN

Key Stage 2 attainment: 33% of looked after children with SEN achieved the expected level in Key Stage 2 reading, writing and mathematics in 2014/15 (up from 32% in 2013/14). This compares with 39% of non-looked after children with SEN.

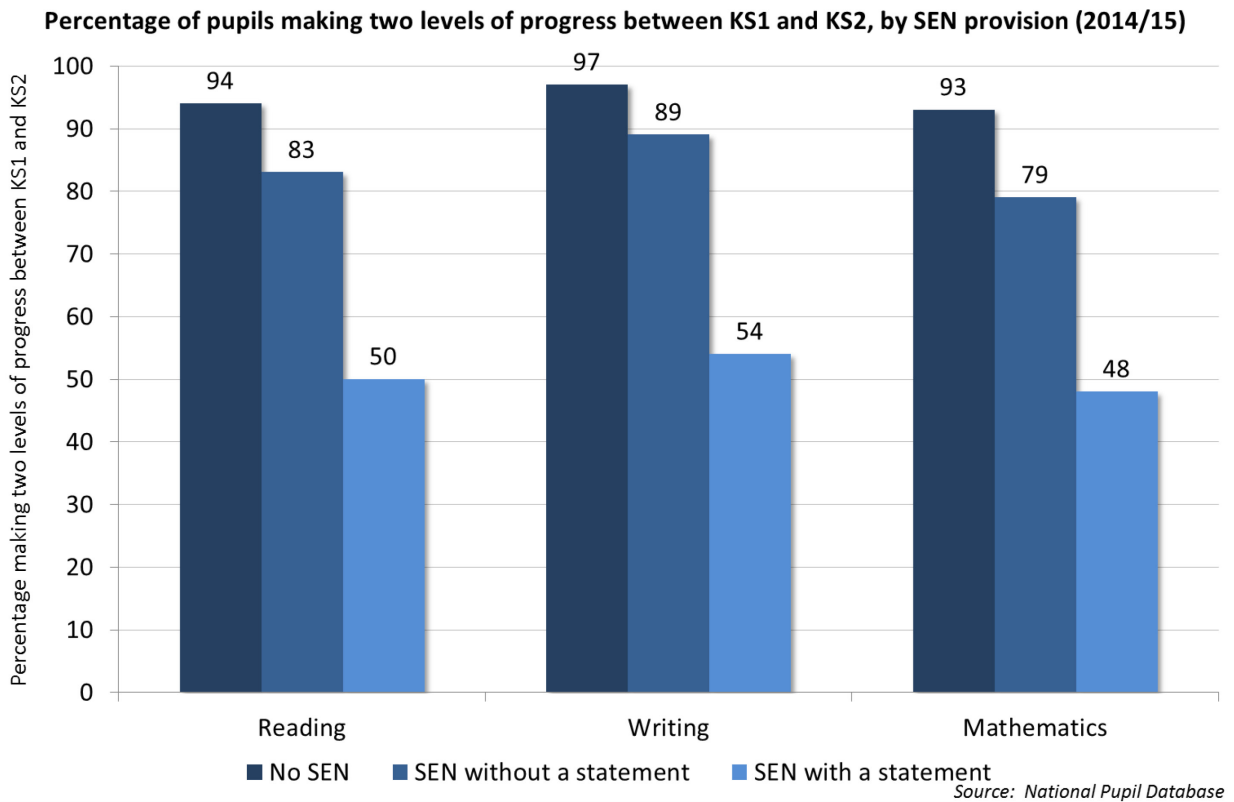
Key Stage 4 attainment: 8.2% of looked after children with SEN achieved 5+ GCSEs at A*-C or equivalent including English and mathematics in 2014/15 compared to 19.1% of non-looked after children with SEN. Note that due to reforms introduced in 2014 data is not comparable to earlier years.

More information on looked after children with special educational needs can be found in the following publication:

[‘Outcomes for children looked after by LAs: 31 March 2015’](#) Next update due March 2017

Progression

Key Stage 1 to Key Stage 2 progression



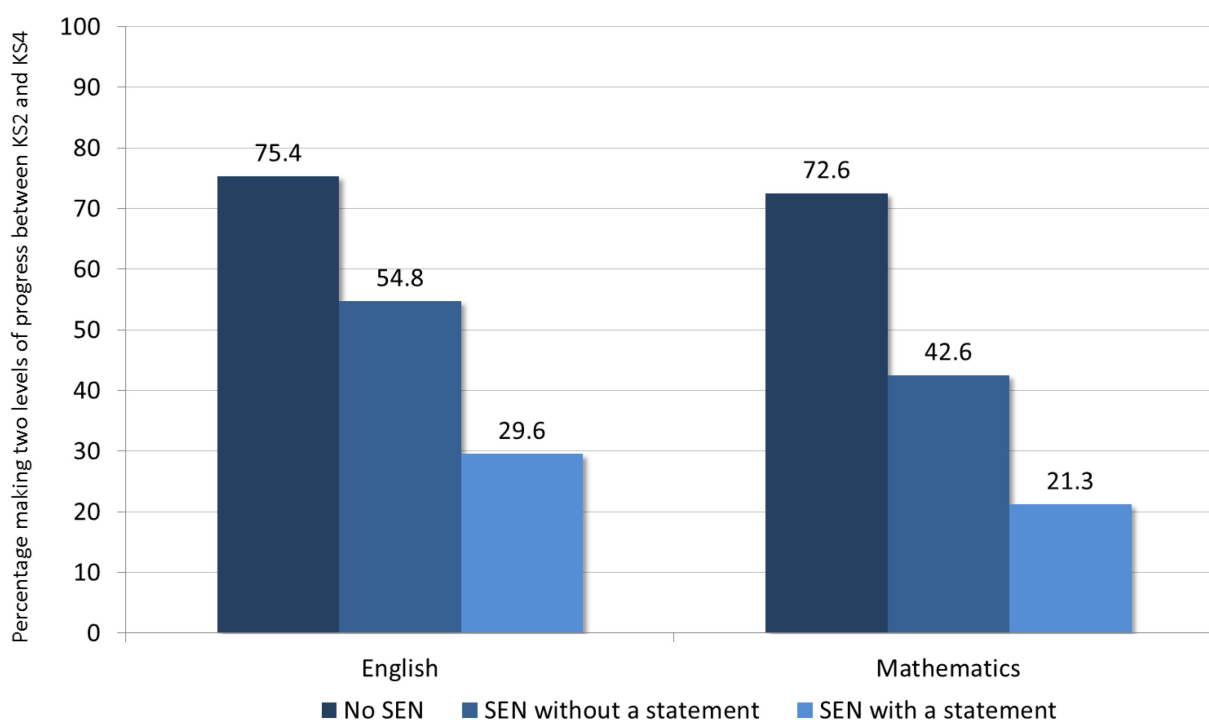
Pupils with SEN were most likely to make the expected progress (two levels of progress) in writing, then reading and then mathematics.

For writing the gap between those with SEN without a statement and those with no SEN was 8 percentage points, for those with a statement the gap was 43 percentage points. These gaps were larger for both reading and mathematics.

Pupils with hearing or visual impairments were the most likely to make the expected progress. Those with profound and multiple learning difficulties were least likely to make the expected progress.

Key Stage 2 to Key Stage 4 progression

Percentage of pupils making two levels of progress between KS2 and KS4, by SEN provision (2014/15)



Source: National Pupil Database

Pupils were more likely to make the expected progress (two levels of progress) in English than mathematics. For English the gap between those with no SEN and those with SEN without a statement was 20.6 percentage points; and for those with a statement was 45.8 percentage points.

For mathematics the gap between those with no SEN and those with SEN without a statement was 30.0 percentage points; and for those with a statement was 51.3 percentage points.

Pupils with visual impairments were the most likely to make the expected progress in English (65.5%) and those with hearing impairments were more likely to make the expected progress in mathematics (60.2%). Those with profound and multiple learning difficulties were least likely to make the expected progress in English (3.2%) and those with severe learning difficulties were least likely to make the expected progress in mathematics (2.0%).

More information on attainment and progression can be found in the following publications:

[‘Early years foundation stage profile results: 2014 to 2015’](#) Next update due November 2016

[‘Phonics screening check and key stage 1 assessments: England 2015’](#) Next update due September 2016

[‘National curriculum assessments at key stage 2: 2015 \(revised\)’](#) Next update due December 2016

[‘Revised GCSE and equivalent results in England: 2014 to 2015’](#) Next update due January 2017

[‘Level 2 and 3 attainment by young people aged 19 in 2015’](#). Next update due April 2017

Preparation for Adulthood

Post-16 learner participation

Participation for 16 and 17 year olds

87.3% of 16/17 year olds with SEN with a statement or EHC plan were in education and training in December 2015, this is 4.0 percentage points lower than those without SEN (91.3%).

Participation in Further Education

In the 2013/14 academic year approximately 190,610 learners in mainstream Further Education (FE) aged under 19, self-declared a learning difficulty or disability (LDD) (19.4% of all learners in this age group). There were 116,410 learners aged 19-24 in mainstream Further Education (FE) with a self-declared learning difficulty or disability (LDD) (15.6% of all learners in this age group).

Destinations

After Key Stage 4 - Young people at the end of compulsory schooling: 88% of pupils with a statement were in a sustained education destination compared to 82% of pupils with SEN without statements and 92% of those without SEN (2013/14 destinations).

After Key Stage 5 - Young people who took A levels/level 3 qualifications: 49% of pupils with SEN in schools progressed to Higher Education compared to 59% of those without SEN. 34% of those with Learning Difficulty or Disability (LDD) in colleges progressed to Higher Education compared to 40% of those without LDD (2013/14 destinations).

Employment status for adults with learning difficulties

In 2014-15, 6.0% of adults with learning difficulties aged 18-64 who are known to social services were in paid employment, compared to 6.7% in the previous year (although the data collection system changed in 2014-15 which means time series comparisons should only be made with caution).

Accommodation status for adults with learning difficulties

In 2014-15, 73.3% of adults with learning difficulties aged 18-64 who are known to social services lived in their own home or with families, compared to 74.9% in the previous year (although the data collection system changed in 2014-15 which means time series comparisons should only be made with caution).

More information on Preparation for adulthood can be found in the following publications:

[‘Participation in education and training: local authority figures’](#) Next update due June 2016

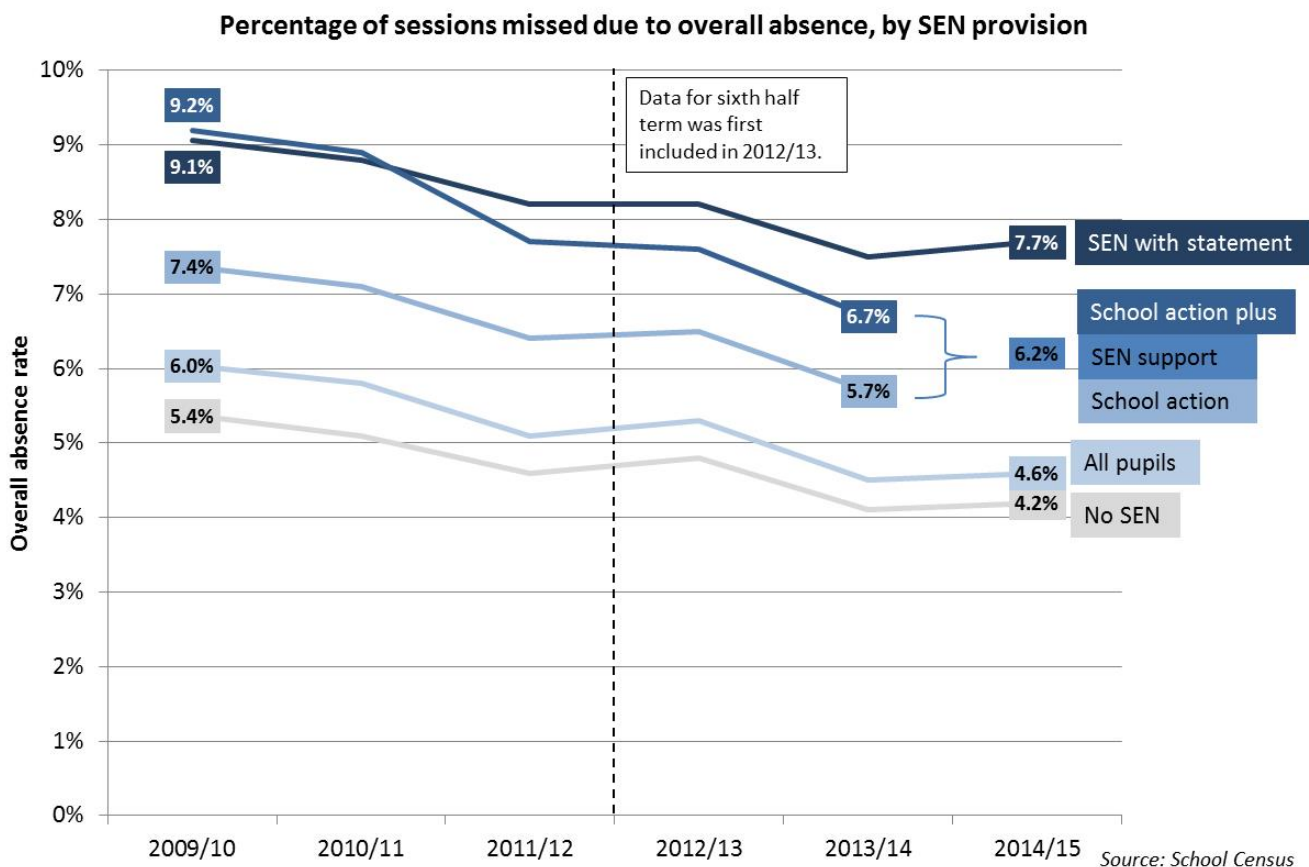
[‘FE data library: equality and diversity’](#) Next update due December 2016

[‘Destinations of key stage 4 and key stage 5 pupils: 2013 to 2014’](#) Next update due October 2016

[‘Measures from the Adult Social Care Outcomes Framework, England - 2014-15’](#) Next update due October 2016

Absence and exclusions

Absence



7.7% of sessions were missed for pupils with statements or EHC plans in 2014/15 compared to 6.2% for pupils on SEN support and 4.2% for pupils without SEN.

11.6% of pupils with statements or EHC plans were persistent absentees in 2014/15 compared to 7.3% for pupils on SEN support and 2.8% for pupils without SEN.

Pupils with primary SEN type of profound and multiple learning difficulties were most likely to be absent from school in 2014/15, these pupils missed 14.2% of sessions.

Exclusions

5.17% of pupils with SEN without a statement received a fixed period exclusion in 2013/14 compared to 6.42% of pupils with statements and 1.08% of pupils with no SEN.

0.25% of pupils with SEN without a statement received a permanent exclusion in 2013/14 compared to 0.15% of pupils with statements and less than 0.03% of pupils with no SEN.

More information on absence and exclusions can be found in the following publications:

[‘Pupil absence in schools in England: 2014 to 2015’](#) Next update due March 2017

[‘Permanent and fixed-period exclusions in England: 2013 to 2014’](#) Next update due July 2016

Experience of the SEND system

Total number of statements or EHC plans maintained by local authorities

There were 74,210 statutory EHC plans and 182,105 statements maintained by local authorities at January 2016. This gives a combined total of 256,315. The combined total of statements and EHC plans has increased each year since 2010.

Number of new statements or plans issued by local authorities

There were 24,655 new EHC plans and 3,270 new statements made during 2015 giving a combined total of 27,925. The combined number of statements and EHC plans made during 2015 is greater than 2014 but lower than 2013.

Progress transferring statements to EHC plans

Between January 2015 and January 2016 there were 42,005 transfers from statements to EHC plans. When accounting for null returns, this is equal to 18.2% of statements in place in January 2015. The period for local authorities to transfer statements to EHC plans began in September 2014 and is due to end by April 2018.

Timeliness of issuing statements and EHC plans

Of the statements made during 2015 (excluding cases where exceptions apply), 46.5% were issued within the 26 week time limit. This figure is lower than in 2014 where 89.0% were issued within the time limits. A lower figure was expected for 2015 than 2014 as new assessments for a statement should not have occurred after September 2014. Therefore, those statements that were issued in 2015 are more likely to be cases that took longer to complete.

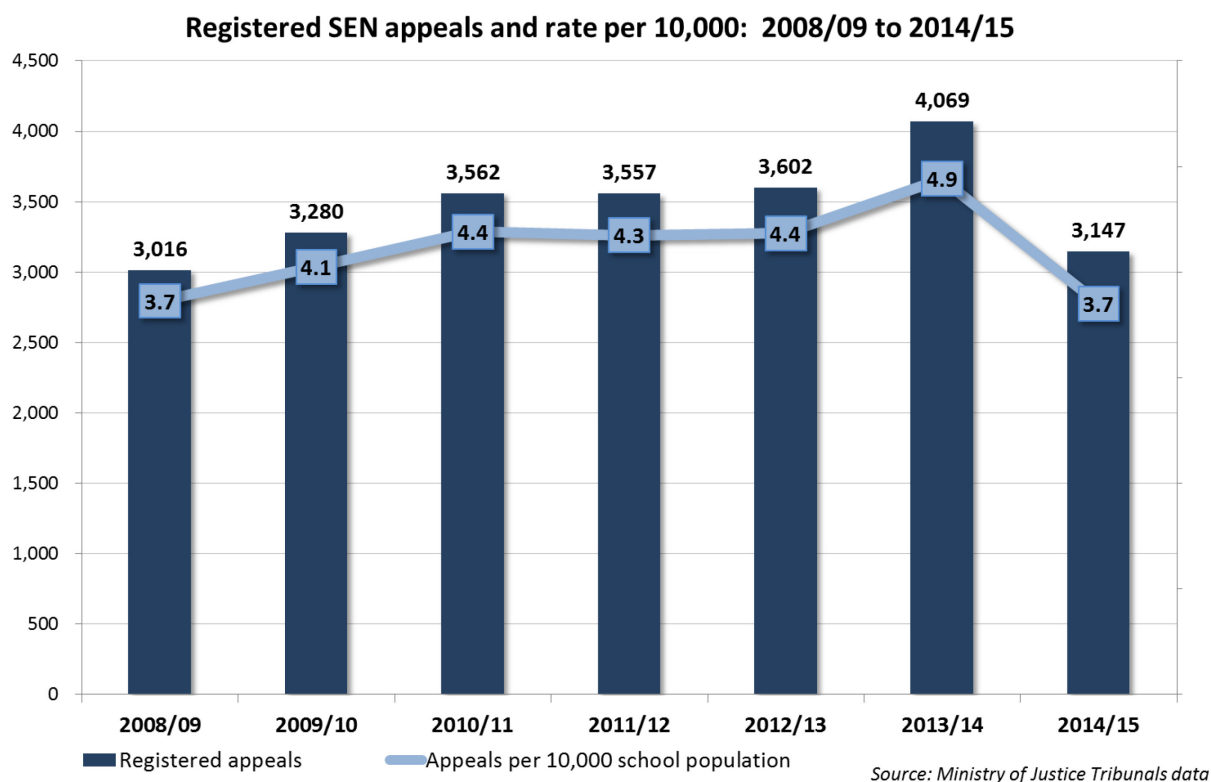
Of the new EHC plans made during 2015 (excluding cases where exceptions apply), 59.2% were issued within the 20 week time limit. This has reduced from last year when 64.3% were issued within the time limits. The percentage of EHC plans completed within the time limits is lower than the percentage of statements issued within the time limits in previous years. We would expect local authorities to take time to adjust to the new system, in particular, the addition of health and care elements.

Appeals registered with the SEND tribunal

There were around 3,150 appeals registered in 2014/15, which is equivalent to around 3.7 appeals per 10,000 of the school population. This is a decrease compared to the previous year where there were around 4,100 appeals registered equivalent to 4.9 per 10,000 of the school population.

In 2014/15, 52% of appeals were against the contents of the statement or EHC plan and 32% were against a refusal to assess.

In 2014/15, 76% of appeals were conceded or withdrawn. Of the remaining 25% that reached an outcome, 86% of appeals were successful to some extent.



Latest quarterly data shows there were 763 appeals registered between October and December 2015, compared to 820 for the same period in 2015, a fall of 7%.

More information on the experience of the SEND system can be found in the following publications:

[‘Statements of SEN and EHC plans: England 2016’](#) Next update due May 2017

[‘Tribunals statistics’](#) Next update due June 2016

Related information

Local Authority Interactive Tool (LAIT)

This tool is produced by the Department, it contains a range of LA level information relating to Education and Children's services (including on SEND) and enables comparisons across all local authorities in England.

The LAIT is available to access at "[Local Authority Interactive Tool link](#)".

LG Inform

This tool is similar to the LAIT, it is managed by the Local Government Association and contains a range of indicators to cover all council services, which includes Education and Children's services.

LG Inform is available to access at "[LG Inform link](#)".

Feedback:

We have changed the way this publication looks to make it more accessible and more timely. We welcome feedback on any aspect of the publication at: SEN.Statistics@education.gsi.gov.uk



Department
for Education

© Crown copyright 2016

This publication (not including logos) is licensed under the terms of the Open Government Licence v3.0 except where otherwise stated. Where we have identified any third party copyright information you will need to obtain permission from the copyright holders concerned.

To view this licence:

visit www.nationalarchives.gov.uk/doc/open-government-licence/version/3
email psi@nationalarchives.gsi.gov.uk
write to Information Policy Team, The National Archives, Kew, London, TW9 4DU

About this publication:

enquiries Jessica Miller, Children's Services Analysis and Research, Department for Education, St Pauls Place, Sheffield.

Tel: 0114 2742194

Email: Jessica.Miller@education.gsi.gov.uk

download [hyperlink to web address](#)

Reference: DFE-00279-2015



Follow us on Twitter:
[@educationgovuk](https://twitter.com/educationgovuk)



Like us on Facebook:
facebook.com/educationgovuk