

# Report



## **Equality and Diversity data report, 2009/10 to 2011/12**

Adult learner and all age Apprenticeship participation and success rates by ethnicity, gender, learning difficulties and/or disabilities and age

**Date of issue** August 2013 (**Revised October 2013**)

Figures for Sector Subject Area have been revised so that Apprenticeship frameworks are allocated to Sector Subject Areas on a consistent basis for the entire time series, as per the SFR supplementary tables.

**Publication intent** Public

---

## **Executive Summary**

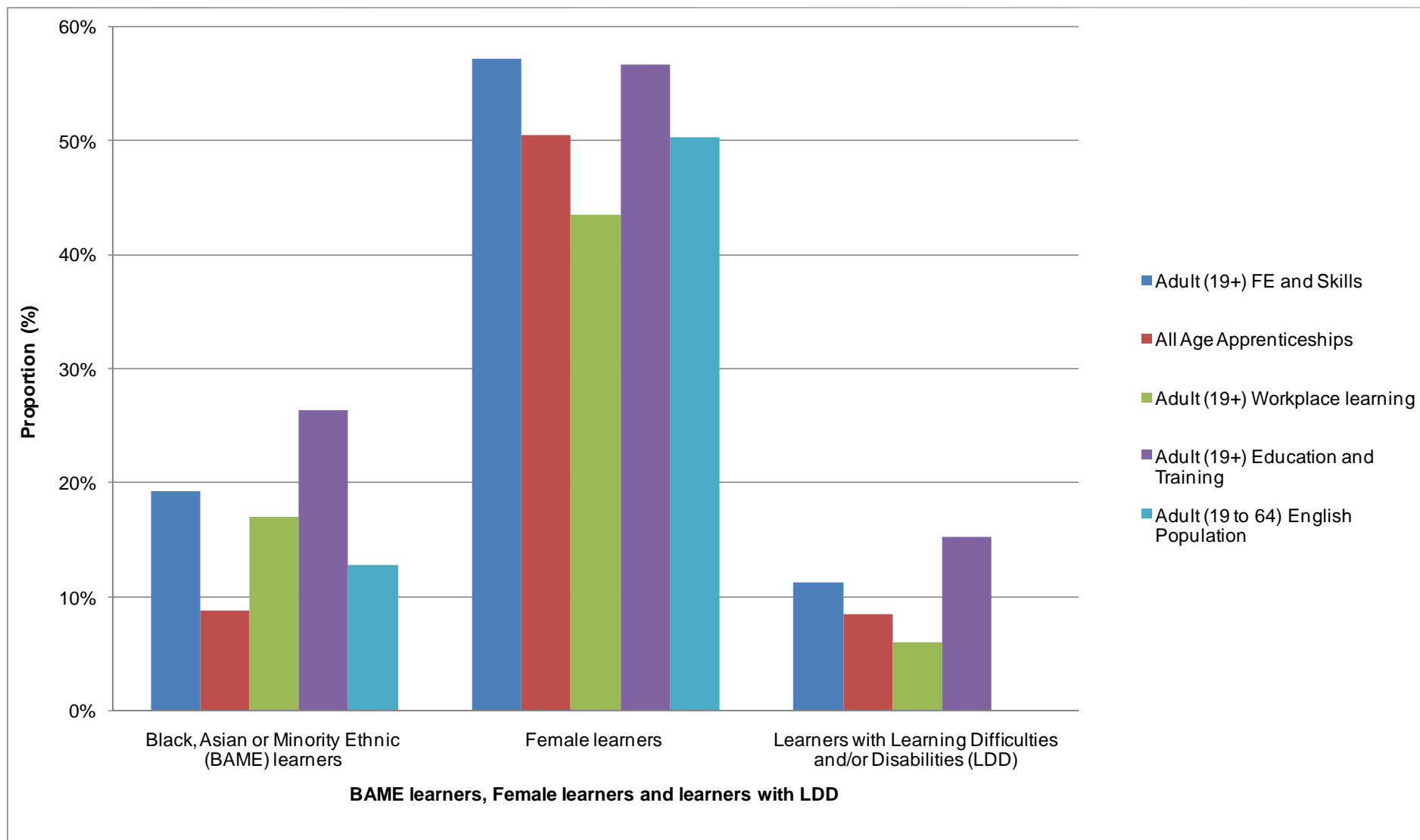
- 1 This report analyses participation and success rates of apprentices and adult learners in 2009/10, 2010/11 and 2011/12 by ethnicity, gender, learning difficulties and/or disabilities and age, using data from the Individualised Learner Record.
- 2 The summary chart below shows participation in 2011/12 by Black, Asian or Minority Ethnic (BAME) learners, female learners, and learners with learning difficulties and/or disabilities, broken down by funding stream, and compared against the English population. Comparable population figures for learning difficulties and/or disabilities are not available, so are not shown in this chart.

### **Skills Funding Agency**

Cheylesmore House Quinton Road Coventry CV1 2WT  
T 0845 377 5000 [www.skillsfundingagency.bis.gov.uk](http://www.skillsfundingagency.bis.gov.uk)

An agency of the Department for Business, Innovation & Skills

## Summary Chart: Equality and Diversity Proportions for Learners, 2011/12 and the English Population<sup>1</sup>



<sup>1</sup> Office for National Statistics Quarter 4 2011 Labour Force Survey, ages 19 to 64, England.

## Ethnicity

3 In 2011/12:

- 19.6 per cent of adult learners were from a Black, Asian or Minority Ethnic (BAME) background. This was higher than the estimated proportion in the general English population (13.5 per cent) and higher than the proportion in 2009/10 (18.1 per cent).
- 9.5 per cent of apprentices of all ages were from a BAME background. This was lower than the proportion of BAME people in the English population (ages 19-64) as a whole (13.5 per cent). However, it is higher than the proportion of BAME apprentices in 2009/10 (7.1 per cent).
- Apprenticeship success rates ranged from 67.8 per cent for Black or Black British learners to 74.2 per cent for White learners, a gap of 6.4 percentage points.
- Education and Training success rates rose across all ethnic groups compared to 2011/12. In 2011/12, they ranged from 81.2 per cent for Black or Black British learners, and Mixed or Multiple Ethnic Group learners, to 84.6 per cent for White learners, a gap of 3.4 percentage points. This is a narrower gap than the equivalent gap of 7.1 percentage points in 2008/09.

## Gender

4 In 2011/12:

- 56.4 per cent of adult learners were female.
- 52.1 per cent of apprentices were female. This is higher than the English population estimate of 50.2 per cent and higher than the proportion of apprentices in 2009/10 (46.9 per cent).
- In the five largest Apprenticeship Sector Subject Areas (SSAs):
  - 64.3 per cent of Apprenticeship starts in Business, Administration and Law are by females
  - 79.5 per cent of Apprenticeship starts in Health, Public Services and Care are by females
  - 54.2 per cent of Apprenticeship starts in Retail and Commercial Enterprise are by females
  - 7.8 per cent of Apprenticeship starts in Engineering and Manufacturing Technologies apprentices are by females

- 29.2 per cent of Apprenticeship starts in Leisure, Travel and Tourism are by females
- The all-age Apprenticeship success rate was 73.7 per cent for females and 74.0 per cent for males.

## Learning Difficulties and/or Disabilities

5 In 2011/12:

- 11.8 per cent of all adult learners declared learning difficulties and/or disabilities. This is higher than the proportion in 2009/10 (10.7 per cent). The proportion of learners whose disability status is not known was 4.7 per cent, lower than in 2009/10 (6.2 per cent).
- 7.8 per cent of apprentices declared learning difficulties and/or disabilities. This is lower than the proportions in 2009/10 (9.7 per cent).
- 5.8 per cent of BAME apprentices declared an LDD, compared to 8.0 per cent of White apprentices.
- In adult Education and Training provision, 10.6 per cent of BAME learners declared an LDD, compared to 17.2 per cent of White learners
- In Apprenticeships, the success rate for learners with LDD was 70.4 per cent. This was 3.8 percentage points lower than the success rate for learners who did not declare learning difficulties and/or disabilities (74.1 per cent).
- In Education and Training provision, learners who declared an LDD had a success rate of 84.0 per cent, the same as learners who did not declare an LDD.

## Age

6 In 2011/12:

- In Education and Training provision, success rates ranged from 81.9 percent for learners aged 19-24 to 91.0 per cent for learners aged 60+, a gap of 9.1 percentage points.
- Apprentices under 19 had a success rate of 73.1 per cent; 19-24 apprentices had a success rate of 75.9 per cent and learners over 25 had a success rate of 72.6 per cent.

# Contents

Executive Summary .....	1
Contents .....	5
Introduction .....	6
Notes on Data.....	6
Participation.....	8
Participation by Ethnicity .....	8
Participation by Gender.....	12
Participation by Learning Difficulties and/or Disabilities .....	15
Participation by Age .....	20
Participation by Ethnicity and Gender .....	24
Participation by Ethnicity and Learning Difficulties and/or Disabilities.....	28
Participation by Gender and Learning Difficulties and/or Disabilities .....	32
Apprenticeship starts by Sector Subject Area and Gender.....	35
Success Rates.....	37
Success Rates by Ethnicity .....	37
Success Rates by Gender .....	41
Success Rates by Learning Difficulties and/or Disabilities .....	42
Success Rates by Age.....	46
Success Rates by Ethnicity and Gender .....	48
Success Rates by Ethnicity and Learning Difficulties and/or Disabilities .....	50
Success Rates by Gender and Learning Difficulties and/or Disabilities.....	52
Support .....	55

## Introduction

- 7 The Skills Funding Agency's [Single Equality Scheme](#) sets out how we are meeting the Public Sector Equality Duty and going beyond it where practicable.
- 8 This report forms part of a range of equality information published by the Skills Funding Agency, including:
  - a [report on equality and diversity in the Skills Funding Agency workforce](#) published in January 2013
  - a [study of learners' views of religion and belief](#), published in October 2012
  - [research on the experiences of lesbian, gay, bisexual and trans learners](#), published in August 2011
- 9 This report is accompanied by a spreadsheet which includes more detailed breakdowns, for example Apprenticeship data broken down by age, and full ethnicity breakdowns. Where indicated, some tables and charts in this report are extracts of these more detailed tables.
- 10 The next update of this report is due in 2014, when final 2012/13 data becomes available.
- 11 The purposes of these reports are to:
  - enable communities to hold the FE sector to account for its equality outcomes
  - inform learners
  - enable colleges, providers and other stakeholders to understand the impact of their activities on equality, and develop objectives to advance equality
  - help meet one of the specific duties under the Equality Act, to publish equality information.

## Notes on Data

- 12 All learner data are drawn from the Individualised Learner Record (ILR). Full details are available in the Excel spreadsheets which accompany this report, and the table numbers correspond to those in the spreadsheets.
- 13 Demographic comparisons for gender and ethnicity are based on the Office for National Statistics Quarter 4 2011 Labour Force Survey, ages 19 to 64 in England.
- 14 Volumes are rounded to the nearest ten except Grand Totals which are rounded to the nearest hundred; percentages are calculated based on pre-rounded data.
- 15 '-' Indicates a base value of less than 10; '\*\*' indicates a percentage of less than 0.5%.

- 16 To allow for comparison between different ILR data sources, learner data tables use age as at 31 August of the academic year for all provision except Table 8 (Apprenticeships starts) which uses age at the start of the programme. The tables include learners aged 19 and over only, except Apprenticeship tables, which include under 19s.
- 17 Full-year numbers are a count of the number of learners that participated at any point during the year. Learners undertaking more than one course will appear only once. However, learners that are included in different data collections, whether that relates to different years or different funding streams, will be counted more than once.
- 18 Success rates are calculated as the number of learning aims achieved divided by the number of starts, excluding any learners who transferred onto another qualification within the same organisation. Learners who withdrew within the first 6 weeks of the qualification are excluded.
- 19 Age, gender, learning difficulties and/or disabilities and ethnicity are based upon self-declaration by the learner.
- 20 'Total BAME' is the sum of learners from a Black, Asian or Minority Ethnic group.

# Participation

## Participation by Ethnicity

21 In 2011/12, 19.6 per cent of adult learners were from a Black, Asian and Minority Ethnic (BAME) background. This was higher than the estimated proportion in the general English population (13.5 per cent) and higher than the proportions in 2009/10 (18.1 per cent) and 2010/11 (19.2 per cent). [Table 1A]

**Table 1A: Adult (19+) FE and Skills Participation by Ethnicity (2009/10 to 2011/12)**

Ethnicity	2009/10		2010/11		2011/12		English population
	Number	% of Total	Number	% of Total	Number	% of Total	2011
Asian / Asian British	284,520	8.0%	272,160	8.6%	267,920	8.5%	7.4%
Black/African/Caribbean/Black British	215,770	6.1%	205,830	6.5%	215,060	6.8%	3.1%
Mixed / multiple ethnic Group	62,520	1.8%	60,830	1.9%	68,410	2.2%	1.1%
Other Ethnic Group	77,210	2.2%	69,170	2.2%	66,040	2.1%	1.8%
<b>Total BAME</b>	<b>640,020</b>	<b>18.1%</b>	<b>607,980</b>	<b>19.2%</b>	<b>617,420</b>	<b>19.6%</b>	<b>13.5%</b>
White	2,807,040	79.3%	2,481,450	78.4%	2,465,960	78.3%	86.5%
Not Known/Not Provided	93,430	2.6%	73,770	2.3%	66,320	2.1%	0.1%
<b>Grand Total</b>	<b>3,540,500</b>	<b>100.0%</b>	<b>3,163,200</b>	<b>100.0%</b>	<b>3,149,700</b>	<b>100.0%</b>	<b>100.0%</b>



- 22 In 2011/12, 9.5 per cent of apprentices of all ages were from a BAME background. This was lower than the proportion of BAME people in the English population (ages 19-64) as a whole (13.5 per cent). However, it is higher than the proportions of BAME apprentices in 2009/10 (7.1 per cent) and 2010/11 (8.7 per cent). [Table 1B]

**Table 1B (extract<sup>2</sup>): Apprenticeship Participation by Ethnicity (2009/10 to 2011/12)**

Ethnicity	Funded Learners						English population
	2009/10		2010/11		2011/12		2011
	Number	% of Total	Number	% of Total	Number	% of Total	
Asian / Asian British	14,440	2.9%	24,540	3.7%	31,640	3.9%	7.4%
Black/African/Caribbean/Black British	10,010	2.0%	17,950	2.7%	25,450	3.2%	3.1%
Mixed / multiple ethnic Group	7,890	1.6%	11,380	1.7%	14,290	1.8%	1.1%
Other Ethnic Group	2,330	*	4,140	0.6%	5,540	0.7%	1.8%
<b>Total BAME</b>	<b>34,680</b>	<b>7.1%</b>	<b>58,020</b>	<b>8.7%</b>	<b>76,920</b>	<b>9.5%</b>	<b>13.5%</b>
White	452,680	92.1%	602,420	90.5%	722,760	89.6%	86.5%
Not Known/Not Provided	3,920	0.8%	5,460	0.8%	6,800	0.8%	0.1%
<b>Grand Total</b>	<b>491,300</b>	<b>100.0%</b>	<b>665,900</b>	<b>100.0%</b>	<b>806,500</b>	<b>100.0%</b>	<b>100.0%</b>

<sup>2</sup> A full version of Table 1B, including breakdowns by age, is available in the spreadsheet accompanying this report.  
Report issued October 2013  
Equality and Diversity data report, 2009/10 to 2011/12

23 In adult Workplace Learning provision in 2011/12, 17.9 per cent of learners were from a BAME background, higher than the proportion in the population at large (13.5 per cent) and higher than the proportions in 2009/10 (15.7 per cent) and 2010/11 (17.0 per cent) [Table 1C].

**Table 1C: Adult (19+) Workplace Learning Participation by Ethnicity (2009/10 to 2011/12)**

Ethnicity	Funded Learners						English population
	2009/10		2010/11		2011/12		2011
	Number	% of Total	Number	% of Total	Number	% of Total	
Asian / Asian British	72,140	7.4%	62,190	8.3%	41,770	9.2%	7.4%
Black/African/Caribbean/Black British	52,390	5.4%	42,650	5.7%	25,880	5.7%	3.1%
Mixed / multiple ethnic Group	12,790	1.3%	10,590	1.4%	6,870	1.5%	1.1%
Other Ethnic Group	15,790	1.6%	12,280	1.6%	6,790	1.5%	1.8%
<b>Total BAME</b>	<b>153,110</b>	<b>15.7%</b>	<b>127,700</b>	<b>17.0%</b>	<b>81,300</b>	<b>17.9%</b>	<b>13.5%</b>
White	803,500	82.6%	614,260	81.5%	368,060	80.8%	86.5%
Not Known/Not Provided	15,600	1.6%	11,290	1.5%	5,980	1.3%	0.1%
<b>Grand Total</b>	<b>972,200</b>	<b>100.0%</b>	<b>753,200</b>	<b>100.0%</b>	<b>455,300</b>	<b>100.0%</b>	<b>100.0%</b>

24 In adult Education and Training provision in 2011/12, 25.8 per cent of learners were from a BAME background. This was higher than the estimated proportion in the population as a whole (13.5 per cent). It was higher than the proportion in 2009/10 (23.2 per cent), but slightly lower than the proportion in 2010/11 (26.3 per cent).

**Table 1D: Adult (19+) Education and Training Participation by Ethnicity (2009/10 to 2011/12)**

Ethnicity	Funded Learners						English population
	2009/10		2010/11		2011/12		2011
	Number	% of Total	Number	% of Total	Number	% of Total	
Asian / Asian British	143,770	9.5%	131,820	10.9%	156,560	10.3%	7.4%
Black/African/Caribbean/Black British	124,970	8.3%	115,610	9.5%	147,080	9.7%	3.1%
Mixed / multiple ethnic Group	35,220	2.3%	32,630	2.7%	43,530	2.9%	1.1%
Other Ethnic Group	44,710	3.0%	38,540	3.2%	44,160	2.9%	1.8%
<b>Total BAME</b>	<b>348,660</b>	<b>23.2%</b>	<b>318,590</b>	<b>26.3%</b>	<b>391,340</b>	<b>25.8%</b>	<b>13.5%</b>
White	1,113,190	73.9%	863,550	71.2%	1,093,220	72.0%	86.5%
Not Known/Not Provided	43,970	2.9%	31,270	2.6%	33,430	2.2%	0.1%
<b>Grand Total</b>	<b>1,505,800</b>	<b>100.0%</b>	<b>1,213,400</b>	<b>100.0%</b>	<b>1,518,000</b>	<b>100.0%</b>	<b>100.0%</b>

25 In adult Skills for Life provision in 2011/12, 25.1 per cent of learners were from a BAME background, higher than the proportion in England as a whole (13.5 per cent), but lower than the proportions in 2009/10 (28.6 per cent) and 2010/11 (27.6 per cent) [Table 1E].

**Table 1E: Adult (19+) FE and Skills - Skills for Life Participation by Ethnicity (2009/10 to 2011/12)**

Ethnicity	Funded Learners						English population
	2009/10		2010/11		2011/12		2011
	Number	% of Total	Number	% of Total	Number	% of Total	
Asian / Asian British	118,180	13.0%	119,920	12.5%	117,960	10.9%	7.4%
Black/African/Caribbean/Black British	83,160	9.1%	88,030	9.2%	93,430	8.6%	3.1%
Mixed / multiple ethnic Group	20,640	2.3%	22,470	2.3%	26,720	2.5%	1.1%
Other Ethnic Group	37,650	4.1%	35,000	3.6%	33,970	3.1%	1.8%
<b>Total BAME</b>	<b>259,630</b>	<b>28.6%</b>	<b>265,420</b>	<b>27.6%</b>	<b>272,080</b>	<b>25.1%</b>	<b>13.5%</b>
White	629,450	69.2%	679,400	70.6%	793,940	73.3%	86.5%
Not Known/Not Provided	20,060	2.2%	17,030	1.8%	17,030	1.6%	0.1%
<b>Grand Total</b>	<b>909,100</b>	<b>100.0%</b>	<b>961,800</b>	<b>100.0%</b>	<b>1,083,000</b>	<b>100.0%</b>	<b>100.0%</b>

#### Participation by Gender

26 In 2011/12, 56.4 per cent of adult learners were female. This is higher than the proportion in the general English population (50.2 per cent), but lower than the proportions in 2009/10 (57.4 per cent) and 2010/11 (57.1 per cent) [Table 2A].

**Table 2A: Adult (19+) FE and Skills Participation by Gender (2009/10 to 2011/12)**

Gender	Funded Learners						English population
	2009/10		2010/11		2011/12		2011
	Number	% of Total	Number	% of Total	Number	% of Total	
Female	2,033,770	57.4%	1,807,390	57.1%	1,776,940	56.4%	50.2%
Male	1,506,730	42.6%	1,355,800	42.9%	1,372,760	43.6%	49.8%
<b>Grand Total</b>	<b>3,540,500</b>	<b>100.0%</b>	<b>3,163,200</b>	<b>100.0%</b>	<b>3,149,700</b>	<b>100.0%</b>	<b>100.0%</b>

27 In 2011/12, 52.1 per cent of apprentices were female. This is higher than the English population estimate of 50.2 per cent, and higher than the proportions in 2009/10 (46.9 per cent) and 2010/11 (50.4 per cent) [Table 2B].

**Table 2B (extract<sup>3</sup>): Apprenticeship Participation by Gender (2009/10 to 2011/12)**

Gender	Funded Learners						English population
	2009/10		2010/11		2011/12		2011
	Number	% of Total	Number	% of Total	Number	% of Total	
Female	230,320	46.9%	335,530	50.4%	420,180	52.1%	50.2%
Male	260,960	53.1%	330,360	49.6%	386,300	47.9%	49.8%
<b>Grand Total</b>	<b>491,300</b>	<b>100.0%</b>	<b>665,900</b>	<b>100.0%</b>	<b>806,500</b>	<b>100.0%</b>	<b>100.0%</b>

28 In 2011/12, 38.5 per cent of learners in Workplace Learning provision were female. This is lower than the English population estimate of 50.2 per cent, and lower than the proportions of female learners in 2009/10 (47.0 per cent) and 2010/11 (43.5 per cent) [Table 2C].

**Table 2C: Adult (19+) Workplace Learning Participation by Gender (2009/10 to 2011/12)**

Gender	Funded Learners						English population
	2009/10		2010/11		2011/12		2011
	Number	% of Total	Number	% of Total	Number	% of Total	
Female	456,840	47.0%	327,390	43.5%	175,190	38.5%	50.2%
Male	515,360	53.0%	425,860	56.5%	280,140	61.5%	49.8%
<b>Grand Total</b>	<b>972,200</b>	<b>100.0%</b>	<b>753,200</b>	<b>100.0%</b>	<b>455,300</b>	<b>100.0%</b>	<b>100.0%</b>

<sup>3</sup> A full version of Table 2B, including breakdowns by age, is available in the spreadsheet accompanying this report.

29 In 2011/12, 55.5 per cent per cent of adult learners in Education and Training provision were female. This is higher than the estimated proportion of females in the English population (50.2 per cent), but lower than the proportions of female learners in 2009/10 (57.3 per cent) and 2010/11 (56.6 per cent) [Table 2D].

**Table 2D: Adult (19+) Education and Training Participation by Gender (2009/10 to 2011/12)**

Gender	Funded Learners						English population
	2009/10		2010/11		2011/12		2011
	Number	% of Total	Number	% of Total	Number	% of Total	
Female	862,110	57.3%	687,100	56.6%	843,200	55.5%	50.2%
Male	643,710	42.7%	526,310	43.4%	674,800	44.5%	49.8%
<b>Grand Total</b>	<b>1,505,800</b>	<b>100.0%</b>	<b>1,213,400</b>	<b>100.0%</b>	<b>1,518,000</b>	<b>100.0%</b>	<b>100.0%</b>

30 In 2011/12, 58.5 per cent of adult Skills for Life learners were female. This is higher than the estimated proportion in the general English population (50.2 per cent). It was higher than the proportion in 2009/10 (58.1 per cent) but lower than the proportion in 2010/11 (59.3 per cent) [Table 2E].

**Table 2E: Adult (19+) FE and Skills - Skills for Life Participation by Gender (2009/10 to 2011/12)**

Gender	Funded Learners						English population
	2009/10		2010/11		2011/12		2011
	Number	% of Total	Number	% of Total	Number	% of Total	
Female	528,220	58.1%	570,240	59.3%	633,290	58.5%	50.2%
Male	380,930	41.9%	391,610	40.7%	449,750	41.5%	49.8%
<b>Grand Total</b>	<b>909,100</b>	<b>100.0%</b>	<b>961,800</b>	<b>100.0%</b>	<b>1,083,000</b>	<b>100.0%</b>	<b>100.0%</b>

### Participation by Learning Difficulties and/or Disabilities

- 31 The Department for Work and Pensions Family Resources Survey estimates that in 2011/12, 16 per cent (5.8 million) of adults of working age were disabled. However, learner figures and population estimates cannot be directly compared as they are collected in different ways. In particular, impairments are defined differently; learner data are based on self-declaration, and there was a relatively large proportion of 'not knowns' in the learner data.
- 32 In 2011/12, 11.8 per cent of all adult learners declared learning difficulties and/or disabilities. This is higher than the proportions in 2009/10 (10.7 per cent) and 2010/11 (11.2 per cent) [Table 3A.1]. The proportion of learners whose disability status is not known is 4.7 per cent, lower than in 2009/10 (6.2 per cent) and 2010/11 (6.1 per cent).

**Table 3A.1: Adult (19+) FE and Skills Participation by Learning Difficulties and/or Disabilities (2009/10 to 2011/12)**

	Funded Learners					
	2009/10		2010/11		2011/12	
<b>Learners with Learning Difficulties and/or Disabilities</b>	<b>Number</b>	<b>% of Total</b>	<b>Number</b>	<b>% of Total</b>	<b>Number</b>	<b>% of Total</b>
Learning Difficulty/Disability	378,160	10.7%	354,000	11.2%	370,720	11.8%
No Learning Difficulty/Disability	2,942,580	83.1%	2,616,490	82.7%	2,631,230	83.5%
Not Known	219,760	6.2%	192,700	6.1%	147,760	4.7%
<b>Grand Total</b>	<b>3,540,500</b>	<b>100.0%</b>	<b>3,163,200</b>	<b>100.0%</b>	<b>3,149,700</b>	<b>100.0%</b>

33 In 2011/12:

- 1.0 per cent of all adult learners declared a mental health difficulty
- 0.8 per cent declared a disability affecting mobility
- 0.7 per cent declared a hearing impairment
- 0.7 per cent declared multiple disabilities
- 1.7 per cent declared another medical condition [Table 3A.2].

**Table 3A.2: Adult (19+) FE and Skills Participation by Disability (2009/10 to 2011/12)**

Disability	Funded Learners					
	2009/10		2010/11		2011/12	
	Number	% of Total	Number	% of Total	Number	% of Total
Visual Impairment	17,360	*	14,900	*	15,260	*
Hearing Impairment	24,690	0.7%	22,170	0.7%	21,570	0.7%
Disability Affecting Mobility	27,720	0.8%	24,910	0.8%	24,750	0.8%
Other Physical Disability	13,210	*	12,520	*	12,760	*
Other Medical Condition (For Example Epi	51,610	1.5%	49,150	1.6%	52,600	1.7%
Emotional/Behavioural Difficulties	6,500	*	6,700	*	7,680	*
Mental Health Difficulty	28,510	0.8%	28,440	0.9%	31,780	1.0%
Temporary Disability After Illness (For Exa	2,030	*	1,820	*	1,900	*
Profound Complex Disabilities	1,570	*	1,820	*	1,470	*
Asperger's Syndrome	2,390	*	2,980	*	4,070	*
Multiple Disabilities	19,900	0.6%	20,860	0.7%	23,070	0.7%
Other	42,320	1.2%	36,490	1.2%	38,310	1.2%
No Disability	3,042,130	85.9%	2,708,150	85.6%	2,629,370	83.5%
Not Known/Information not provided	260,550	7.4%	232,300	7.3%	285,110	9.1%
<b>Grand Total</b>	<b>3,540,500</b>	<b>100.0%</b>	<b>3,163,200</b>	<b>100.0%</b>	<b>3,149,700</b>	<b>100.0%</b>



34 In 2011/12:

- 2.6 per cent of all adult learners declared they have dyslexia
- 1.5 per cent declared a moderate learning difficulty [Table 3A.3].

**Table 3A.3: Adult (19+) FE and Skills Participation by Learning Difficulty (2009/10 to 2011/12)**

Learning Difficulty	Funded Learners					
	2009/10		2010/11		2011/12	
	Number	% of Total	Number	% of Total	Number	% of Total
Moderate Learning Difficulty	52,430	1.5%	48,900	1.5%	47,330	1.5%
Severe Learning Difficulty	9,870	*	9,180	*	8,630	*
Dyslexia	76,500	2.2%	74,480	2.4%	80,890	2.6%
Dyscalculia	2,480	*	2,570	*	2,770	*
Other Specific Learning Difficulty	6,190	*	5,310	*	5,560	*
Autism Spectrum Disorder	2,400	*	3,410	*	4,630	*
Multiple Learning Difficulties	8,050	*	8,880	*	9,620	*
Other	35,690	1.0%	30,400	1.0%	31,310	1.0%
No Learning Difficulty	3,070,050	86.7%	2,730,940	86.3%	2,629,370	83.5%
Not Known/Information not provided	276,850	7.8%	249,120	7.9%	329,610	10.5%
<b>Grand Total</b>	<b>3,540,500</b>	<b>100.0%</b>	<b>3,163,200</b>	<b>100.0%</b>	<b>3,149,700</b>	<b>100.0%</b>

35 In 2011/12, 7.8 per cent of apprentices declared learning difficulties and/or disabilities. This is lower than the proportions in 2009/10 (9.7 per cent) and 2010/11 (8.4 per cent). The proportion whose disability status is not known was 1.6 per cent, higher than in 2009/10 (0.8 per cent) and 2010/11 (0.8 per cent) [Table 3b.1].<sup>4</sup>

**Table 3B.1 (extract): Apprenticeship Participation by Learning Difficulties and/or Disabilities (2009/10 to 2011/12)**

	Funded Learners					
	2009/10		2010/11		2011/12	
	Number	% of Total	Number	% of Total	Number	% of Total
Learning Difficulty/Disability	47,620	9.7%	55,950	8.4%	62,590	7.8%
No Learning Difficulty/Disability	439,530	89.5%	604,750	90.8%	731,260	90.7%
Not Known	4,130	0.8%	5,190	0.8%	12,620	1.6%
<b>Grand Total</b>	<b>491,300</b>	<b>100.0%</b>	<b>665,900</b>	<b>100.0%</b>	<b>806,500</b>	<b>100.0%</b>

36 In 2011/12, 4.6 per cent of learners in Workplace Learning provision declared learning difficulties and/or disabilities. This was a lower proportion than in 2009/10 (6.0 per cent) and 2010/11 (6.0 per cent) [Table 3C.1].<sup>5</sup>

**Table 3C.1: Adult (19+) Workplace Learning Participation by Learning Difficulties and/or Disabilities (2009/10 to 2011/12)**

	Funded Learners					
	2009/10		2010/11		2011/12	
	Number	% of Total	Number	% of Total	Number	% of Total
Learning Difficulty/Disability	58,770	6.0%	45,100	6.0%	21,010	4.6%
No Learning Difficulty/Disability	892,120	91.8%	692,560	91.9%	424,110	93.1%
Not Known	21,310	2.2%	15,590	2.1%	10,220	2.2%
<b>Grand Total</b>	<b>972,200</b>	<b>100.0%</b>	<b>753,200</b>	<b>100.0%</b>	<b>455,300</b>	<b>100.0%</b>

<sup>4</sup> Full breakdowns are available of participation by disability and learning difficulty impairment type in the spreadsheet accompanying this report [Tables 3b.2 and 3b.3]

<sup>5</sup> Full breakdowns are available of participation by disability and learning difficulty impairment type in the spreadsheet accompanying this report [Tables 3C.2 and 3C.3]

37 In 2011/12, 15.4 per cent of learners in Education and Training provision declared learning difficulties and/or disabilities. This was a higher proportion than in 2009/10 (13.7 per cent) and 2010/11 (15.2 per cent) [Table 3D.1].<sup>6</sup>

**Table 3D.1: Adult (19+) Education and Training Participation by Learning Difficulties and/or Disabilities (2009/10 to 2011/12)**

	Funded Learners					
	2009/10		2010/11		2011/12	
	Number	% of Total	Number	% of Total	Number	% of Total
<b>Learners with Learning Difficulties and/or Disabilities</b>						
Learning Difficulty/Disability	205,830	13.7%	184,220	15.2%	234,310	15.4%
No Learning Difficulty/Disability	1,196,240	79.4%	932,920	76.9%	1,215,200	80.1%
Not Known	103,750	6.9%	96,260	7.9%	68,480	4.5%
<b>Grand Total</b>	<b>1,505,800</b>	<b>100.0%</b>	<b>1,213,400</b>	<b>100.0%</b>	<b>1,518,000</b>	<b>100.0%</b>

38 In 2011/12, 11.8 per cent of Skills for Life learners declared learning difficulties and/or disabilities. This was a lower proportion than in 2009/10 (13.0 per cent) and 2010/11 (12.0 per cent) [Table 3E.1].

**Table 3E.1: Adult (19+) FE and Skills - Skills for Life Participation by Learning Difficulties and/or Disabilities (2009/10 to 2011/12)**

	Funded Learners					
	2009/10		2010/11		2011/12	
	Number	% of Total	Number	% of Total	Number	% of Total
<b>Learners with Learning Difficulties and/or Disabilities</b>						
Learning Difficulty/Disability	117,980	13.0%	115,400	12.0%	127,990	11.8%
No Learning Difficulty/Disability	746,180	82.1%	794,320	82.6%	920,240	85.0%
Not Known	44,990	4.9%	52,120	5.4%	34,810	3.2%
<b>Grand Total</b>	<b>909,100</b>	<b>100.0%</b>	<b>961,800</b>	<b>100.0%</b>	<b>1,083,000</b>	<b>100.0%</b>

<sup>6</sup> Full breakdowns are available of participation by disability and learning difficulty impairment type in the spreadsheet accompanying this report [Tables 3D.2 and 3D.3]

## Participation by Age

39 Among all adult learners in 2011/12:

- 24.0 per cent were aged 19-24, a higher proportion than in 2009/10 (21.8 per cent) and 2010/11 (23.5 per cent)
- 25.3 per cent were aged 25-34, a higher proportion than in 2009/10 (24.5 per cent) and 2010/11 (24.7 per cent)
- 21.4 per cent were aged 35-44, a lower proportion than in 2009/10 (23.1 per cent) and 2010/11 (22.1 per cent)
- 21.1 per cent were aged 45-59, a lower proportion than in 2009/10 (21.3 per cent) but a higher proportion than in 2010/11 (20.5 per cent)
- 8.0 per cent were aged 60+, a lower proportion than in 2009/10 (8.8 per cent) and 2010/11 (8.8 per cent) [Table 4A].

**Table 4A: Adult (19+) FE and Skills Participation by Age (2009/10 to 2011/12)**

	Funded Learners					
	2009/10		2010/11		2011/12	
Gender	Number	% of Total	Number	% of Total	Number	% of Total
19-24	770,620	21.8%	744,220	23.5%	754,610	24.0%
25-34	868,030	24.5%	782,870	24.7%	796,260	25.3%
35-44	819,050	23.1%	698,520	22.1%	673,170	21.4%
45-59	754,790	21.3%	649,720	20.5%	665,960	21.1%
60+	310,690	8.8%	277,700	8.8%	252,180	8.0%
Not Known	17,330	*	10,170	*	7,520	*
<b>Grand Total</b>	<b>3,540,500</b>	<b>100.0%</b>	<b>3,163,200</b>	<b>100.0%</b>	<b>3,149,700</b>	<b>100.0%</b>

40 In Apprenticeships in 2011/12:

- 33.7 per cent of apprentices were aged 19-24, a lower proportion than in 2009/10 (42.9 per cent) and 2010/11 (37.8 per cent)
- 17.8 per cent of apprentices were aged 25-34, a higher proportion than in 2009/10 (10.0 per cent) and 2010/11 (13.7 per cent)
- 12.5 per cent of apprentices were aged 35-44, a higher proportion than in 2009/10 (5.3 per cent) and 2010/11 (9.4 per cent)
- 11.7 per cent of apprentices were aged 45-59, a higher proportion than in 2009/10 (3.7 per cent) and 2010/11 (8.0 per cent)
- 0.8 per cent of apprentices were aged 60+, a higher proportion than in 2009/10 (-) and 2010/11 (0.5 per cent) [Table 4B].

**Table 4B: Apprenticeship Participation by Age (2009/10 to 2011/12)**

Age	Funded Learners					
	2009/10		2010/11		2011/12	
	Number	% of Total	Number	% of Total	Number	% of Total
Under 16	4,130	0.8%	4,150	0.6%	3,480	*
16	39,100	8.0%	42,610	6.4%	39,150	4.9%
17	67,620	13.8%	71,300	10.7%	67,220	8.3%
18	75,580	15.4%	85,070	12.8%	79,740	9.9%
19-24	210,930	42.9%	251,900	37.8%	272,130	33.7%
25-34	48,930	10.0%	91,440	13.7%	143,580	17.8%
35-44	26,270	5.3%	62,490	9.4%	101,060	12.5%
45-59	17,970	3.7%	53,450	8.0%	93,980	11.7%
60+	740	*	3,490	0.5%	6,150	0.8%
Not Known	-	-	-	-	-	-
<b>Grand Total</b>	<b>491,300</b>	<b>100.0%</b>	<b>665,900</b>	<b>100.0%</b>	<b>806,500</b>	<b>100.0%</b>

41 In Adult Workplace Learning provision in 2011/12:

- 15.5 per cent of learners were aged 19-24
- 27.6 per cent of learners were aged 25-34
- 26.4 per cent of learners were aged 35-44
- 27.3 per cent of learners were aged 45-59, and
- 3.2 per cent of learners were aged 60+ [Table 4C].

**Table 4C: Adult (19+) Workplace Learning Participation by Age (2009/10 to 2011/12)**

Age	Funded Learners					
	2009/10		2010/11		2011/12	
	Number	% of Total	Number	% of Total	Number	% of Total
19-24	158,920	16.3%	134,140	17.8%	70,500	15.5%
25-34	252,890	26.0%	198,080	26.3%	125,590	27.6%
35-44	271,890	28.0%	201,500	26.8%	120,320	26.4%
45-59	262,100	27.0%	200,030	26.6%	124,440	27.3%
60+	26,400	2.7%	19,500	2.6%	14,490	3.2%
Not Known	-	-	-	-	-	-
<b>Grand Total</b>	<b>972,200</b>	<b>100.0%</b>	<b>753,200</b>	<b>100.0%</b>	<b>455,300</b>	<b>100.0%</b>

42 In Adult Education and Training provision in 2011/12:

- 25.0 per cent of learners were aged 19-24
- 27.0 per cent of learners were aged 25-34
- 22.0 per cent of learners were aged 35-44
- 20.6 per cent of learners were aged 45-59
- 5.3 per cent of learners were aged 60+ [Table 4D].

**Table 4D: Adult (19+) Education and Training Participation by Age (2009/10 to 2011/12)**

Age	Funded Learners					
	2009/10		2010/11		2011/12	
	Number	% of Total	Number	% of Total	Number	% of Total
19-24	345,580	22.9%	303,900	25.0%	379,120	25.0%
25-34	409,580	27.2%	341,140	28.1%	410,430	27.0%
35-44	350,530	23.3%	275,140	22.7%	334,160	22.0%
45-59	294,140	19.5%	225,890	18.6%	312,850	20.6%
60+	101,580	6.7%	66,900	5.5%	80,570	5.3%
Not Known	4,410	*	440	*	870	*
<b>Grand Total</b>	<b>1,505,800</b>	<b>100.0%</b>	<b>1,213,400</b>	<b>100.0%</b>	<b>1,518,000</b>	<b>100.0%</b>

## Participation by Ethnicity and Gender

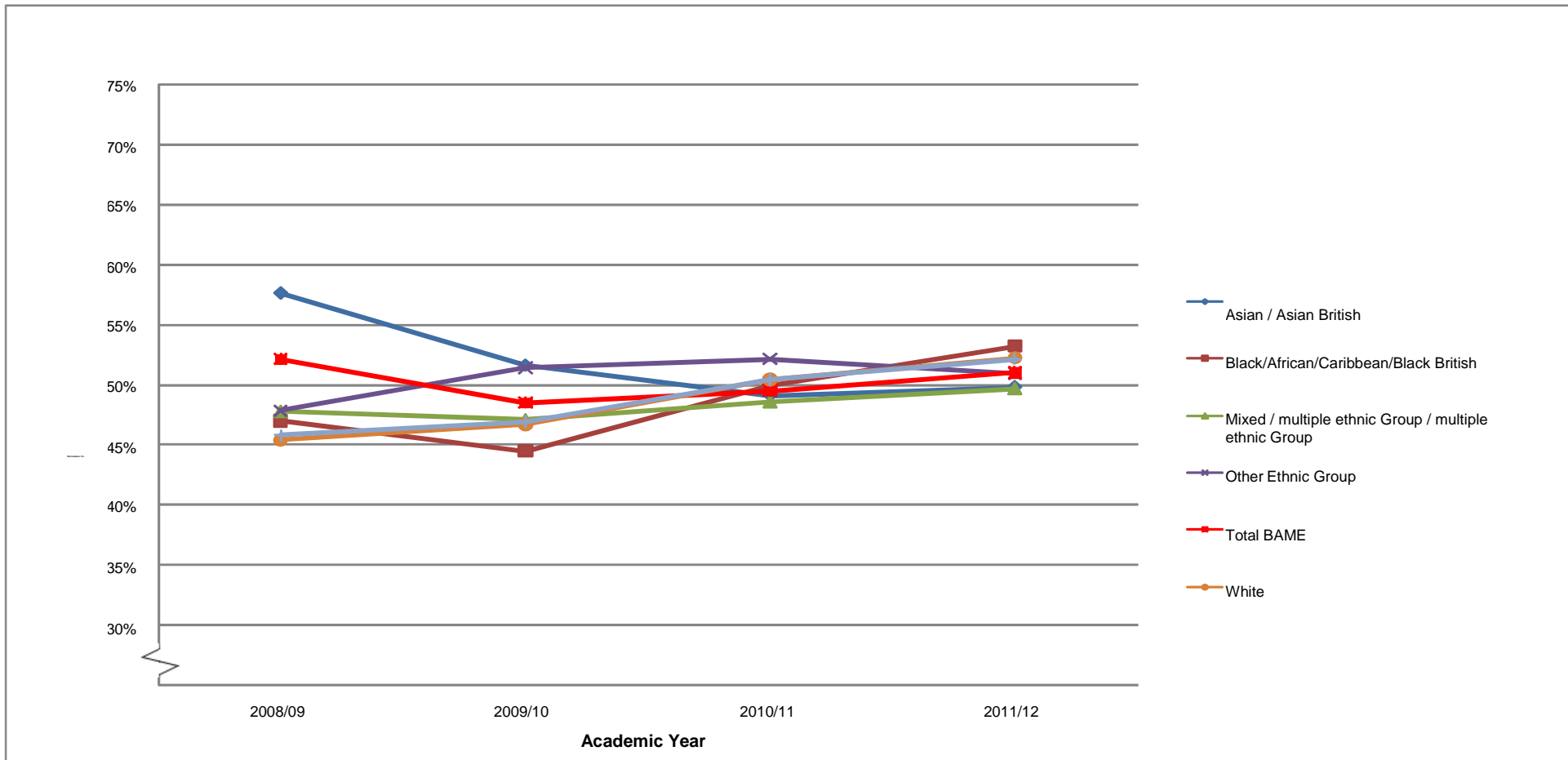
43 In 2011/12, 51.0 per cent of BAME apprentices were female. This was lower than the proportion of White apprentices who were female (52.2 per cent) [Chart 5A]<sup>7</sup>.

---

<sup>7</sup> Full data, including breakdowns by age, are available in Table 5A in the spreadsheet accompanying this report.  
Report issued October 2013  
Equality and Diversity data report, 2009/10 to 2011/12



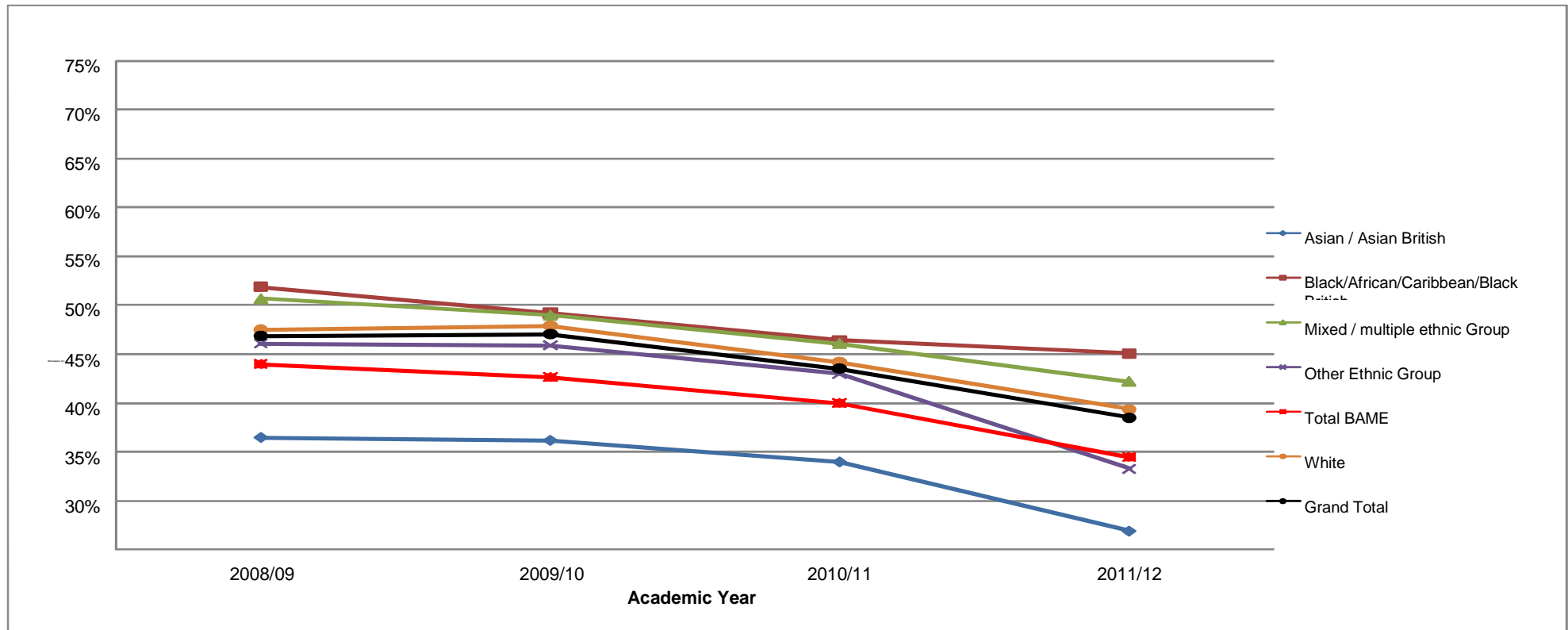
**Chart 5A: Proportion of Learners (All Ages) Participating in Apprenticeships that were Female, by Ethnicity (2008/09-2011/12)**



44 In adult Workplace Learning in 2011/12, 34.5 per cent of BAME learners were female, lower than the proportion of White learners who were female (39.4 per cent). It was also lower than the proportion of BAME learners who were female in

2008/09 (44.0 per cent). Participation by females was lowest among Asian or Asian British learners, among whom 26.9 per cent were female in 2011/12 [Chart 5B]<sup>8</sup>.

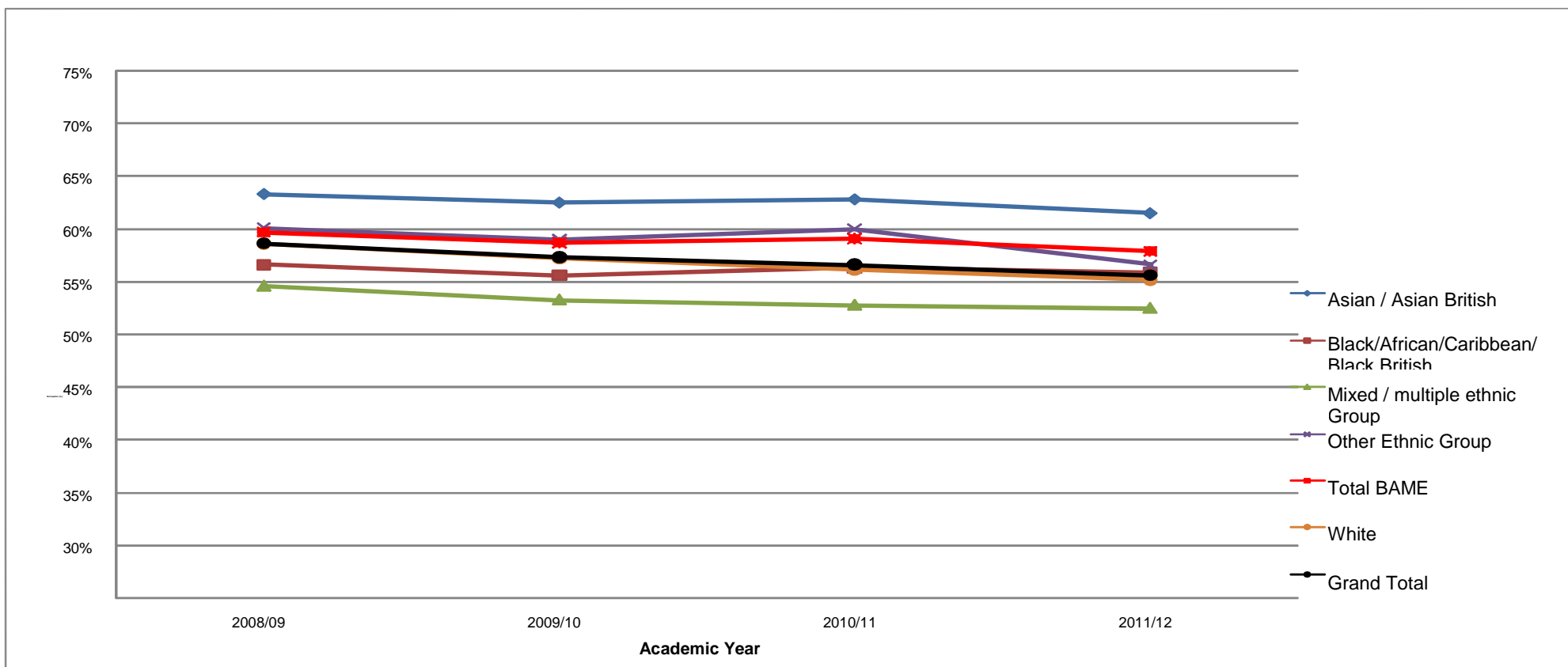
**Chart 5B: Proportion of Adult (19+) Learners Participating in Workplace Learning that were Female, by Ethnicity (2008/09 to 2011/12)**



45 In adult Education and Training provision in 2011/12, 57.8 per cent of BAME learners were female. This was higher than the proportion of White learners who were female (55.1 per cent), but lower than the proportion of BAME learners who were female in 2008/09 (59.7 per cent) [Chart 5C]<sup>9</sup>.

<sup>8</sup> Full data are available in Table 5B in the spreadsheet accompanying this report.

**Chart 5C Proportion of Adult (19+) Learners Participating in Education and Training Provision that were Female, by Ethnicity (2008/09-2011/12)**

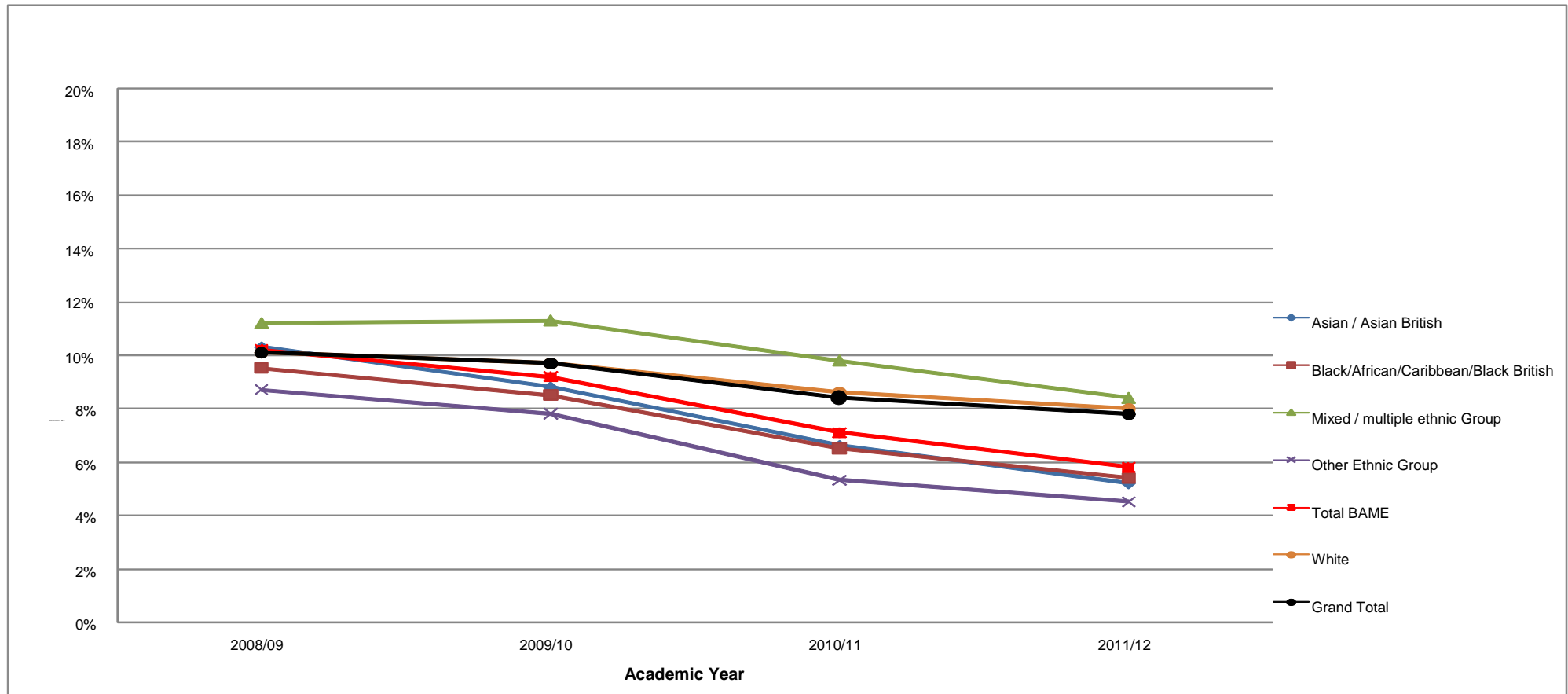


<sup>9</sup> Full data are available in Table 5C in the spreadsheet accompanying this report.  
 Report issued October 2013  
 Equality and Diversity data report, 2009/10 to 2011/12

## Participation by Ethnicity and Learning Difficulties and/or Disabilities

46 In 2011/12, 5.8 per cent of BAME apprentices declared an LDD, compared to 8.0 per cent of White apprentices. In 2011/12, LDD declarations were highest among apprentices of Mixed ethnicity (8.4 per cent) and lowest among apprentices from Other Ethnic Groups (4.5 per cent) [Chart 6A]<sup>10</sup>.

**Chart 6A: Proportion of Learners (All Ages) Participating in Apprenticeships that had LDD, by Ethnicity (2008/09-2011/12)**



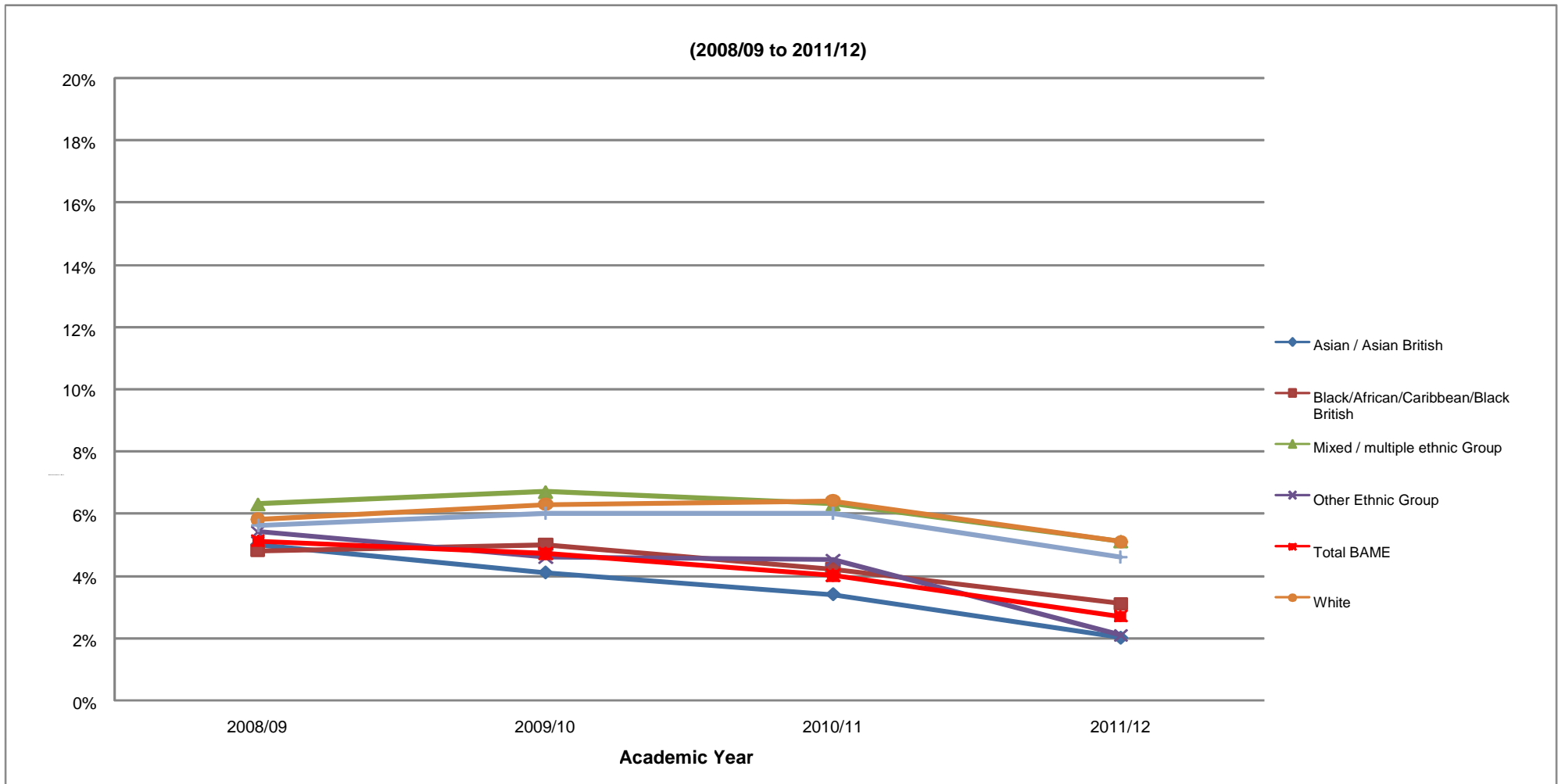
<sup>10</sup> Full figures, including breakdowns by age group, are available in Table 6A of the spreadsheet accompanying this report.  
 Report issued October 2013  
 Equality and Diversity data report, 2009/10 to 2011/12

47 In adult Workplace Learning in 2011/12, 2.7 per cent of BAME learners declared an LDD, compared to 5.1 per cent of White learners [Chart 6B].<sup>11</sup>

---

<sup>11</sup> Full data are available in Table 6B in the spreadsheet accompanying this report.  
Report issued October 2013  
Equality and Diversity data report, 2009/10 to 2011/12

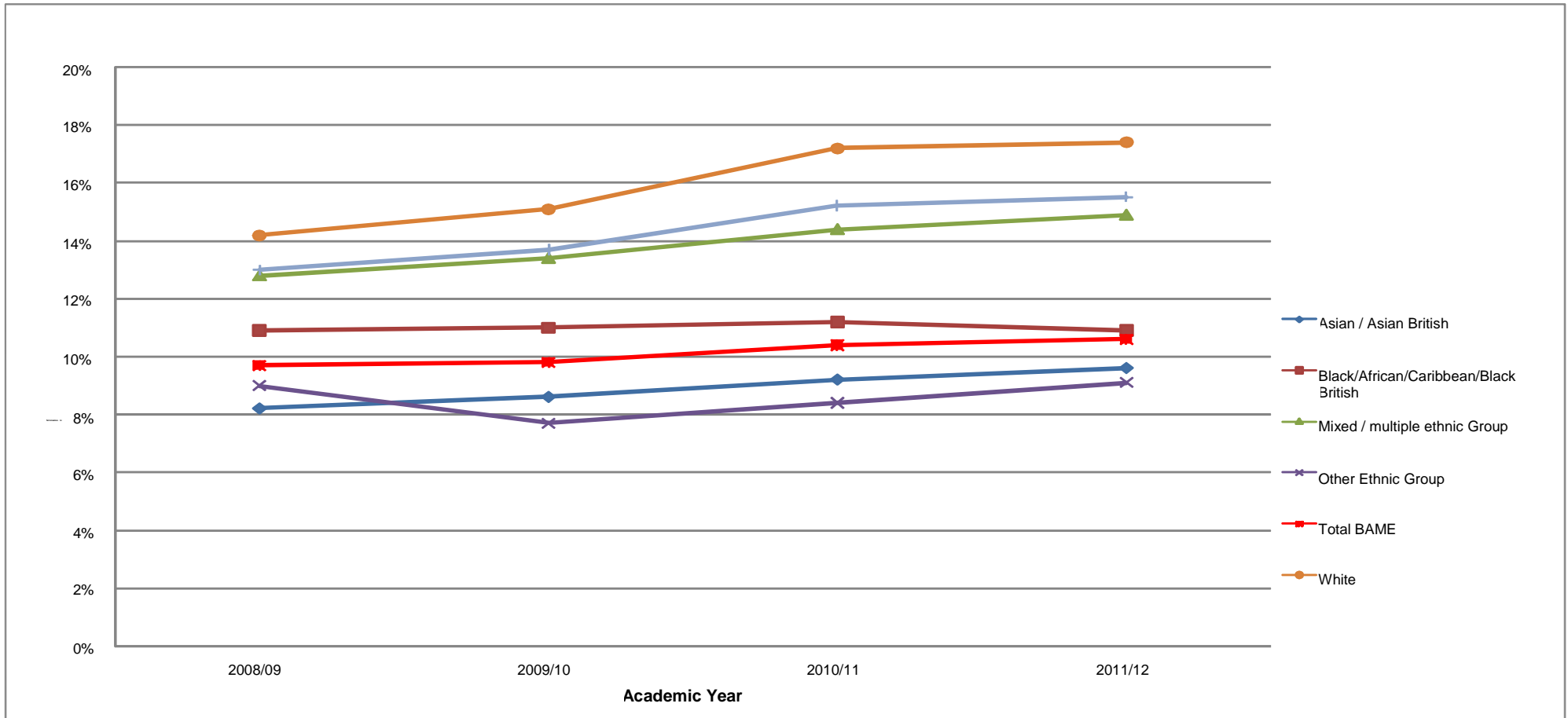
**Chart 6B: Proportion of Adult (19+) Learners Participating in Workplace Learning that had LDD, by Ethnicity (2008/09-2011/12)**



48 In adult Education and Training provision in 2011/12, 10.6 per cent of BAME learners declared an LDD, compared to 17.2 per cent of White learners [Chart 6C].<sup>12</sup>

<sup>12</sup> Full data are available in Table 6C of the spreadsheet accompanying this report.

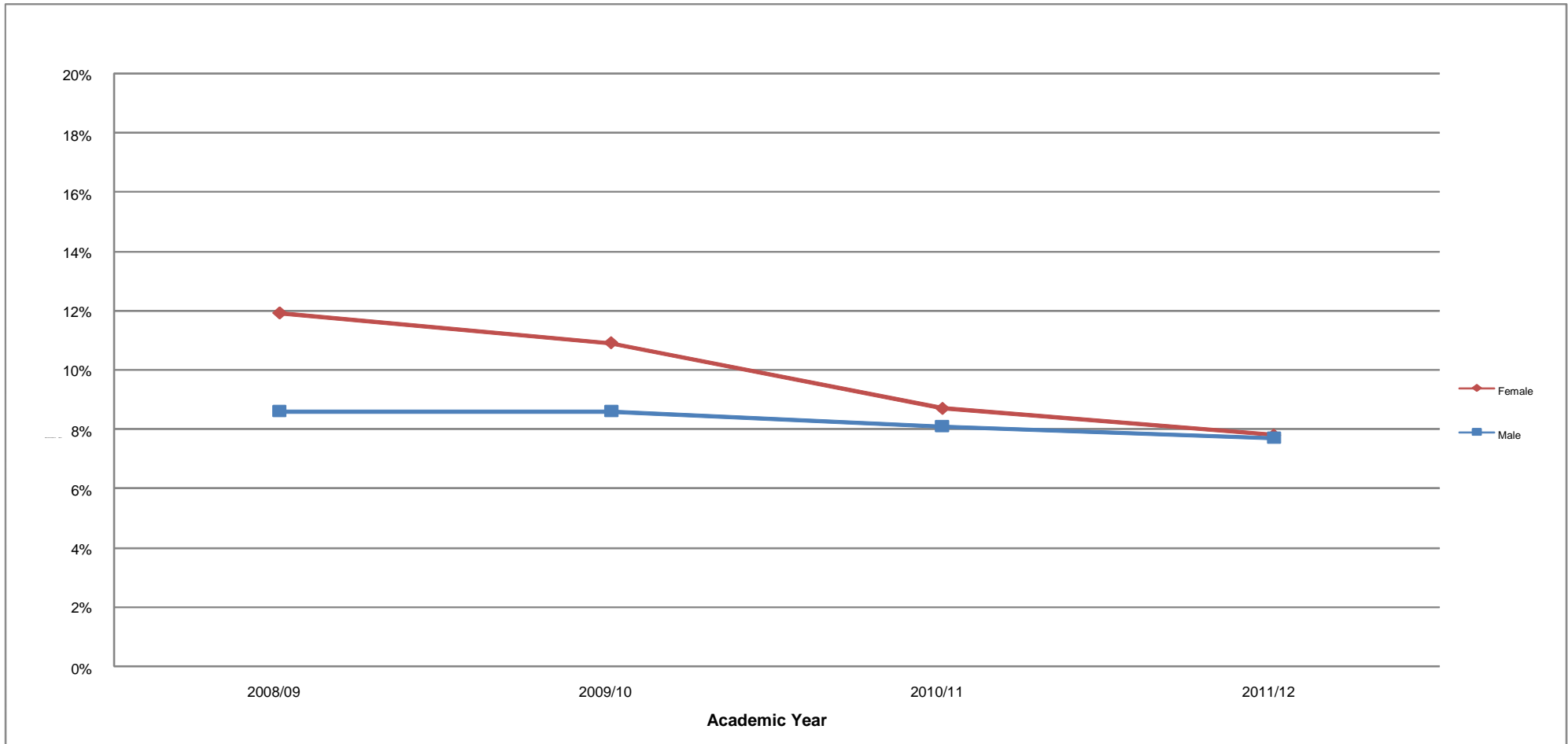
**Chart 6C: Proportion of Adult (19+) Learners Participating in Education and Training that had LDD, by Ethnicity (2008/09-2011/12)**



## Participation by Gender and Learning Difficulties and/or Disabilities

49 In 2011/12, 7.8 per cent of female apprentices declared an LDD, compared to 7.7 per cent of male learners [Chart 7A].<sup>13</sup>

**Chart 7A: Proportion of Learners (All Ages) Participating in Apprenticeships that had LDD, by Gender (2008/09 to 2011/12)**

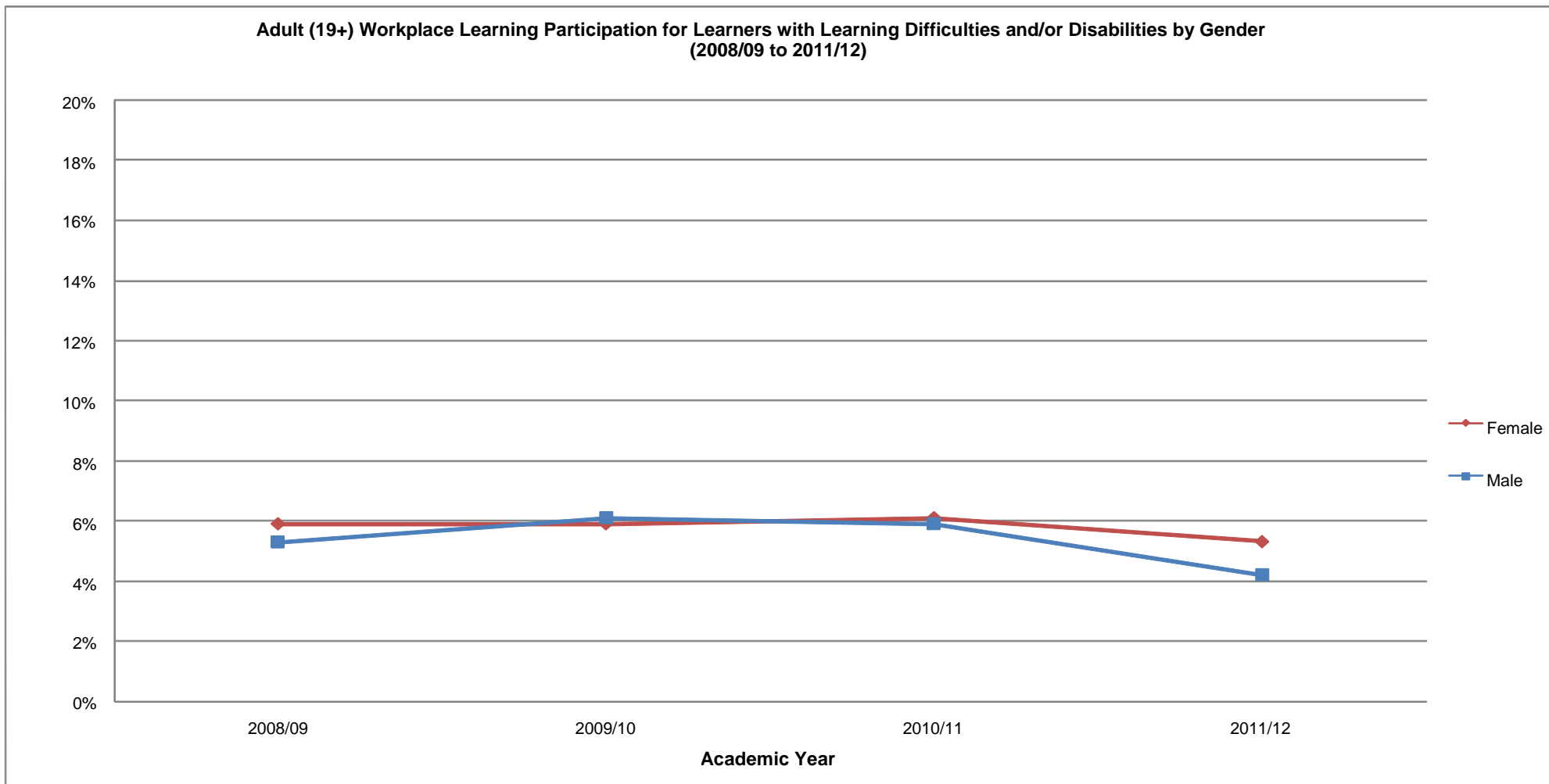


<sup>13</sup> Full data, including breakdowns by age, are available in Table 7A in the spreadsheet accompanying this report.



50 In adult Workplace Learning in 2011/12, 5.3 per cent of female learners declared an LDD, compared to 4.2 per cent of male learners [Chart 7B].<sup>14</sup>

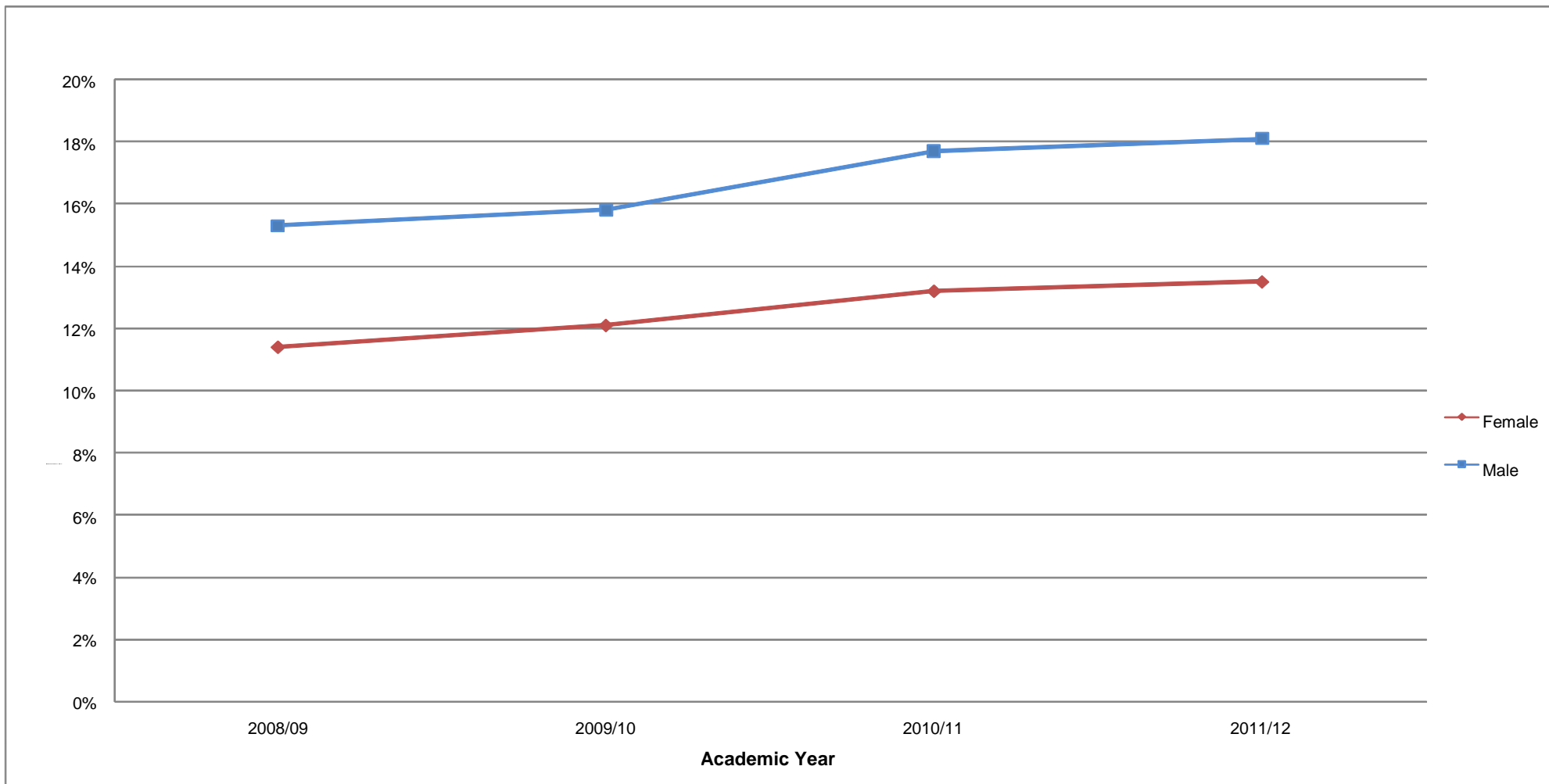
**Chart 7B: Proportion of Adult Learners Participating in Workplace Learning that had LDD, by Gender (2008/09-2011/12)**



<sup>14</sup> Full data are available in Table 7B of the spreadsheet accompanying this report.

51 In adult Education and Training provision in 2011/12, 13.4 per cent of female learners declared an LDD, compared to 18.0 per cent of male learners [Chart 7C].<sup>15</sup>

**Chart 7C: Proportion of Adult Learners Participating in Education and Training that had LDD, by Gender (2008/09-2011/12)**



<sup>15</sup> Full data are available in Table 7C of the spreadsheet accompanying this report.

## Apprenticeship starts by Sector Subject Area and Gender

52 In 2011/12, in the five largest Apprenticeship Sector Subject Areas (SSAs) by number of starts:

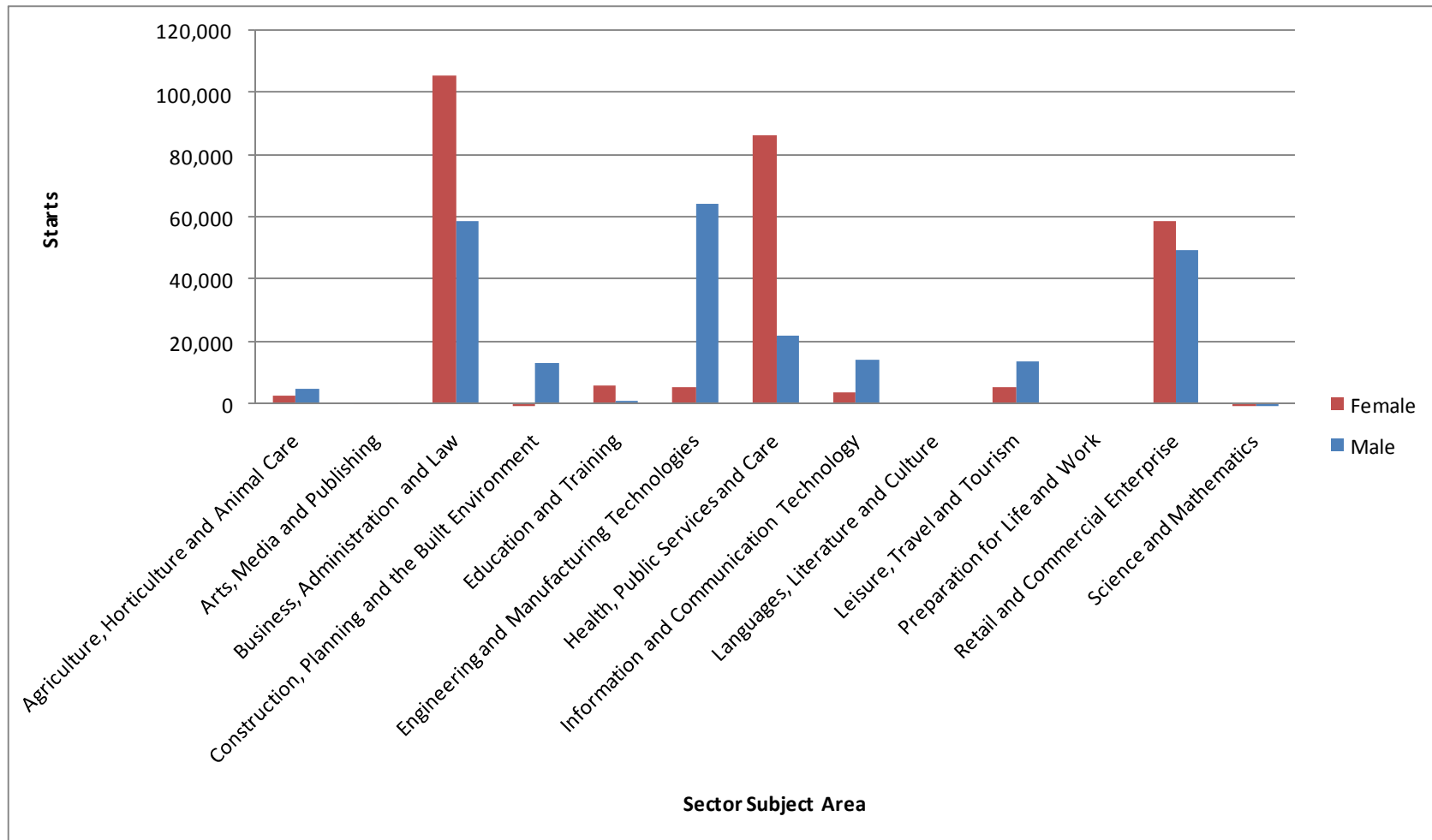
- 64.3 per cent of Apprenticeship starts in Business, Administration and Law are by females
- 79.5 per cent of Apprenticeship starts in Health, Public Services and Care are by females
- 54.2 per cent of Apprenticeship starts in Retail and Commercial Enterprise are by females
- 7.8 per cent of Apprenticeship starts in Engineering and Manufacturing Technologies are by females
- 29.2 per cent of Apprenticeship starts in Leisure, Travel and Tourism are by females [Table 8]<sup>16</sup>.

**Table 8: Apprenticeship Starts by Sector Subject Area (SSA) and Gender (2009/10 to 2011/12)**

Sector Subject Area	2009/10			2010/11			2011/12		
	Female % of SSA	Male % of SSA	All Number	Female % of SSA	Male % of SSA	All Number	Female % of SSA	Male % of SSA	All Number
Agriculture, Horticulture and Animal Care	43.7%	56.3%	5,690	41.6%	58.4%	7,380	35.1%	64.9%	7,570
Arts, Media and Publishing	34.1%	65.9%	440	31.7%	68.3%	1,030	41.5%	58.5%	1,210
Business, Administration and Law	67.3%	32.7%	76,590	65.3%	34.7%	133,820	64.3%	35.7%	164,830
Construction, Planning and the Built Environment	1.6%	98.4%	20,550	1.7%	98.3%	22,420	1.9%	98.1%	13,920
Education and Training	85.7%	14.3%	860	87.3%	12.7%	4,140	82.1%	17.9%	7,550
Engineering and Manufacturing Technologies	3.7%	96.3%	42,520	5.6%	94.4%	54,640	7.8%	92.2%	69,730
Health, Public Services and Care	84.1%	15.9%	44,150	81.7%	18.3%	89,900	79.5%	20.5%	108,810
Information and Communication Technology	18.9%	81.1%	12,570	25.2%	74.8%	19,520	21.7%	78.3%	18,520
Languages, Literature and Culture	-	-	-	-	-	-	-	-	-
Leisure, Travel and Tourism	30.7%	69.3%	14,690	29.2%	70.8%	21,590	29.2%	70.8%	19,770
Preparation for Life and Work	-	-	-	-	-	-	-	-	-
Retail and Commercial Enterprise	61.3%	38.7%	61,620	61.8%	38.2%	102,770	54.2%	45.8%	108,300
Science and Mathematics	-	-	-	-	-	10	42.6%	57.4%	370
Unknown	-	-	-	-	-	-	-	-	-
<b>Grand Total</b>	<b>49.6%</b>	<b>50.4%</b>	<b>279,700</b>	<b>53.8%</b>	<b>46.2%</b>	<b>457,200</b>	<b>53.1%</b>	<b>46.9%</b>	<b>520,600</b>

<sup>16</sup> Full data, including breakdowns by age, are available in Table 8 of the spreadsheet accompanying this report.

**Chart 8: All Age Apprenticeship Starts by Sector Subject Area and Gender, (2011/12)**

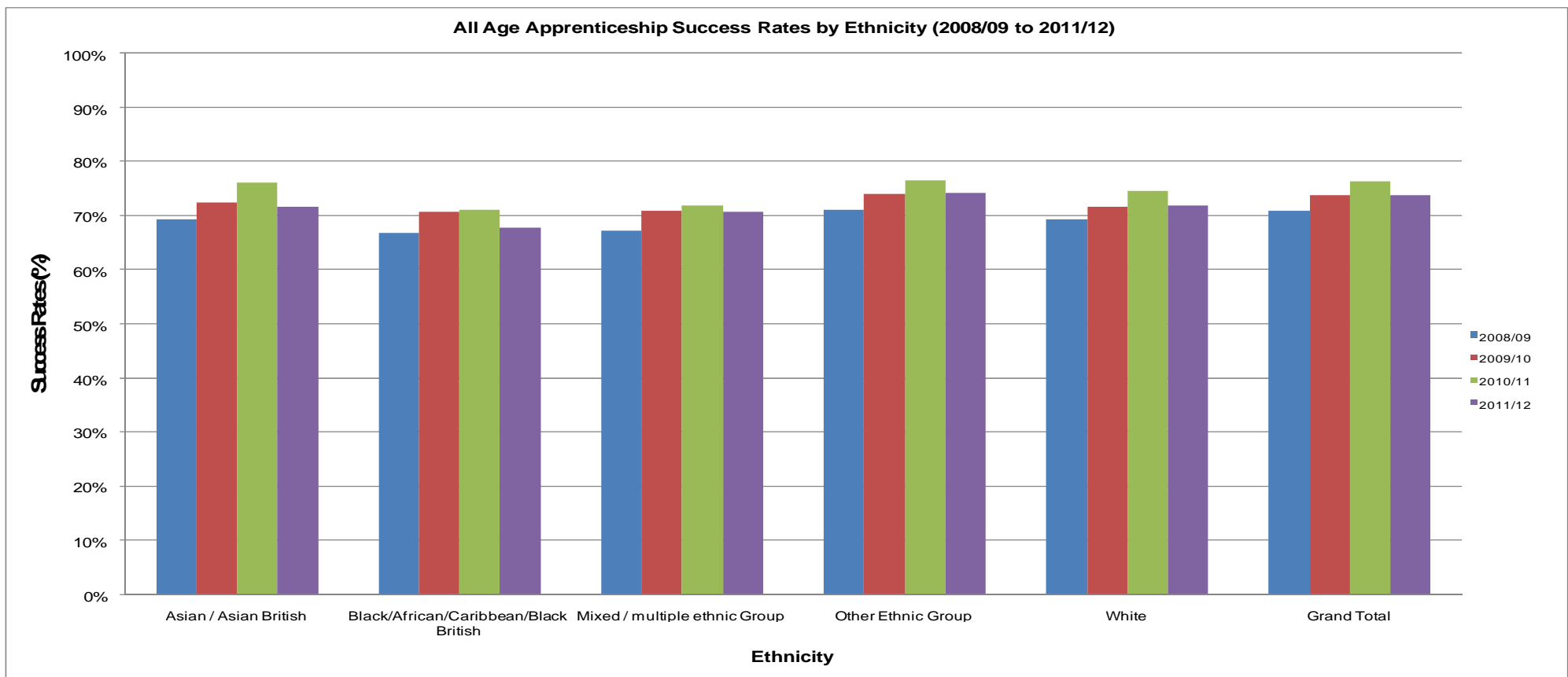


# Success Rates

## Success Rates by Ethnicity

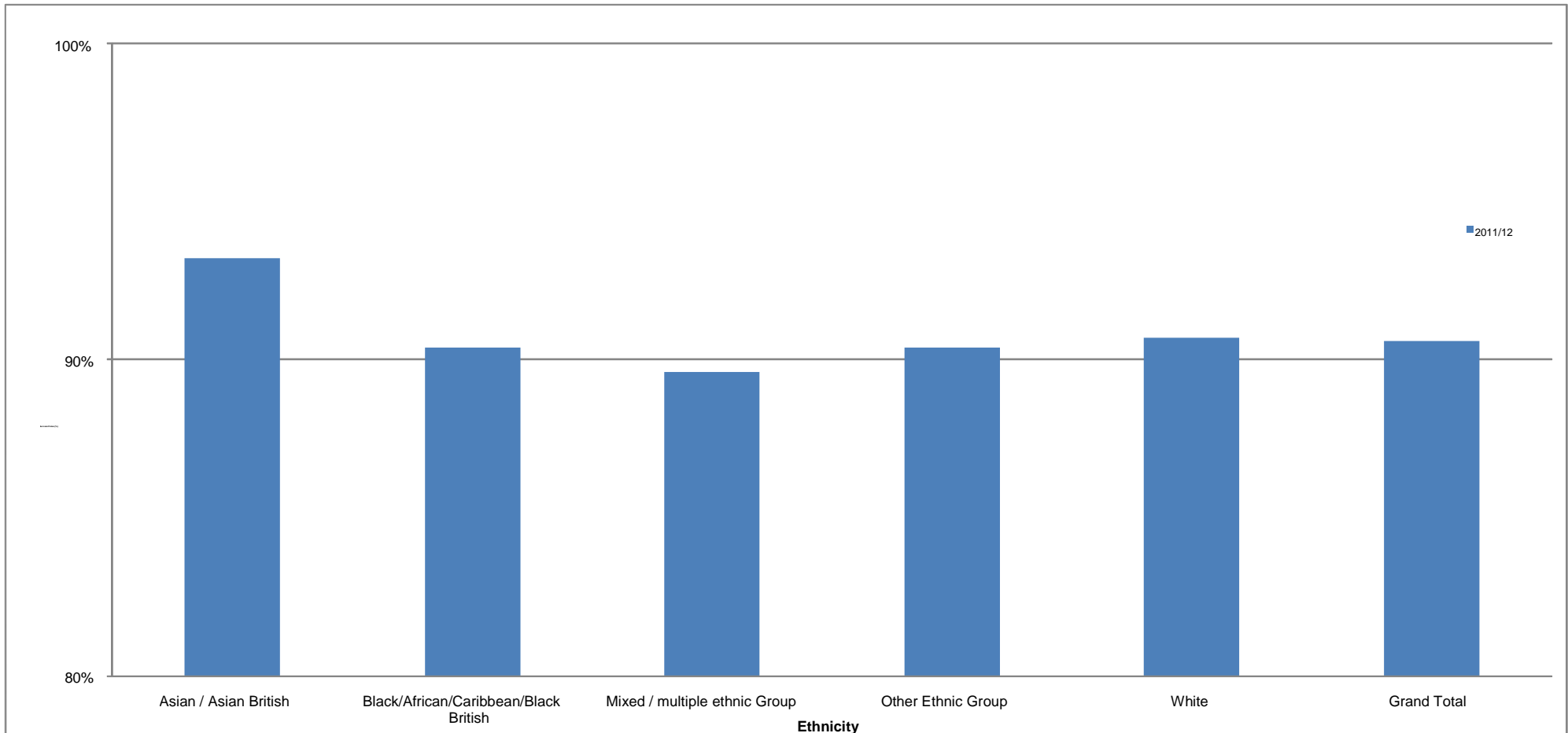
53 In 2011/12, Apprenticeship success rates for all ethnic groups were higher than in 2008/09, but lower than in 2010/11. They ranged from 67.8 per cent for Black or Black British learners to 74.2 per cent for White learners, a gap of 6.4 percentage points. This is a wider gap than the equivalent 5.5 percentage point gap in 2010/11 [Chart 9A].

**Chart 9A: All Age Apprenticeship Success Rates by Ethnicity (2008/09 to 2011/12)**



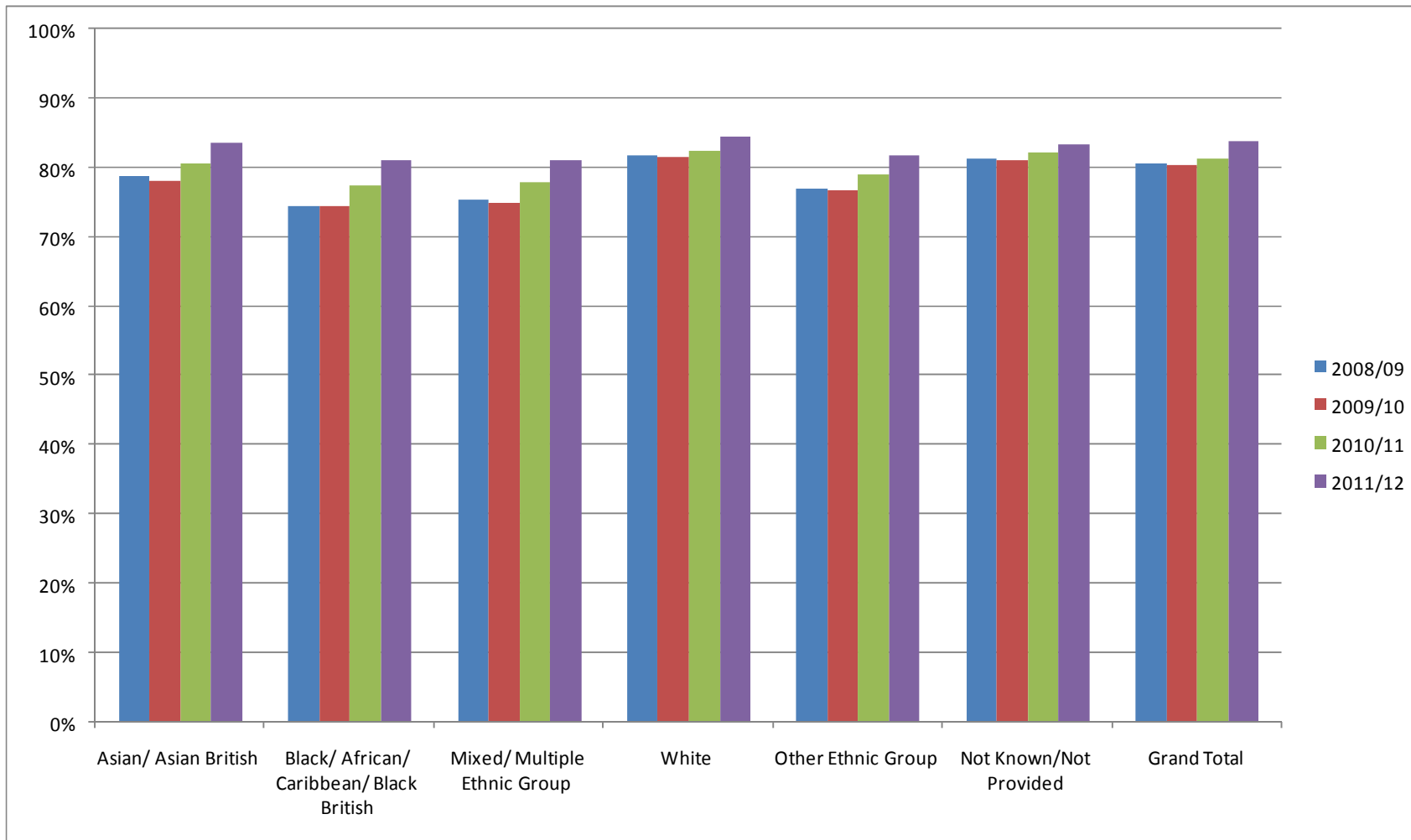
54 In Work Place Learning provision in 2011/12, success rates ranged from 89.6 per cent for learners from mixed/ multiple ethnic groups, to 93.2 per cent for learners from Asian/Asian British backgrounds, a gap of 3.6 percentage points [Chart 9B].

**Chart 9B: Adult (19+) Work Place Learning Success Rates by Ethnicity (2011/12)**



55 Education and Training success rates rose across all ethnic groups between 2008/09 and 2011/12. In 2011/12, they ranged from 81.2 per cent for Black or Black British learners, and Mixed or Multiple Ethnic Group learners, to 84.6 per cent for White learners, a gap of 3.4 percentage points. This is a narrower gap than the equivalent gap of 7.1 percentage points in 2008/09 (Chart 9C).

**Chart 9C: Adult (19+) Education and Training Success Rates by Ethnicity (2008/09 to 2011/12)**





## Success Rates by Gender

56 In 2011/12, the all-age Apprenticeship success rate for females was 73.7 per cent. This was lower than in 2009/10 (74.1 per cent) and 2010/11 (77.2 per cent). The Apprenticeship success rate for males was 74.0 per cent. This was higher than in 2009/10 (73.5 per cent) and lower than in 2010/11 (75.7 per cent). [Table 10A]

**Table 10A: Apprenticeship Success Rates by Age and Gender (2009/10 to 2011/12) - Percentages**

Gender	2009/10				2010/11				2011/12			
	Under 19	19-24	25+	All Age	Under 19	19-24	25+	All Age	Under 19	19-24	25+	All Age
Female	72.8%	74.5%	75.7%	74.1%	75.1%	77.8%	79.4%	77.2%	73.7%	76.1%	72.0%	73.7%
Male	72.1%	75.4%	73.8%	73.5%	73.2%	77.9%	77.9%	75.7%	72.7%	75.7%	73.7%	74.0%
<b>Grand Total</b>	<b>72.4%</b>	<b>74.9%</b>	<b>75.1%</b>	<b>73.8%</b>	<b>74.0%</b>	<b>77.8%</b>	<b>78.8%</b>	<b>76.4%</b>	<b>73.1%</b>	<b>75.9%</b>	<b>72.6%</b>	<b>73.8%</b>

57 In adult Workplace Learning in 2011/12, the female success rate was 91.4 per cent, 2.2 percentage points lower than the male success rate (89.2 per cent) [Table 10B].

**Table 10B: Adult (19+) Workplace Learning Success Rates by Gender (2011/12) – Percentages**

Gender	2011/12
Female	89.2%
Male	91.4%
<b>Grand Total</b>	<b>90.6%</b>

58 In Education and Training provision, success rates increased for both females and males between 2009/10 and 2011/12. In 2011/12, females had a success rate of 84.1 per cent, which was 0.5 percentage points higher than that for males (83.7 per cent) [Table 10C].

**Table 10C: Adult (19+) Education and Training Success Rates by Gender (2009/10 to 2011/12) – Percentages**

<b>Gender</b>	<b>2009/10</b>	<b>2010/11</b>	<b>2011/12</b>
Female	80.7%	81.9%	84.1%
Male	79.4%	80.7%	83.7%
<b>Grand Total</b>	<b>80.3%</b>	<b>81.4%</b>	<b>83.9%</b>

**Success Rates by Learning Difficulties and/or Disabilities**

59 In Apprenticeships, the success rate for learners with learning difficulties and/or disabilities (LDD) was 70.4 per cent in 2011/12. This was 3.8 percentage points lower than the success rate for learners who did not declare learning difficulties and/or disabilities (74.1 per cent). It was higher than in 2009/10 (69.9 per cent), but lower than in 2010/11 (72.6 per cent) [Table 11A.1].

**Table 11A.1: Apprenticeship Success Rates by Learning Difficulties and/or Disabilities (2009/10 to 2011/12) - Percentages**

<b>Learners with Learning Difficulties and/or Disabilities</b>	<b>2009/10</b>	<b>2010/11</b>	<b>2011/12</b>
Learning Difficulty/Disability	69.9%	72.6%	70.4%
No Learning Difficulty/Disability	74.3%	76.8%	74.1%
Not Known	69.9%	73.5%	74.9%
<b>Grand Total</b>	<b>73.8%</b>	<b>76.4%</b>	<b>73.8%</b>

60 In 2011/12, Apprenticeship success rates by disability impairment type ranged from 60.3 per cent for apprentices with mental health difficulties, to 87.0 per cent for those with profound complex disabilities [Table 11A.2].

**Table 11A.2: Apprenticeship Success Rates by Age and Disability (2009/10 to 2011/12) – Percentages (extract)**

<b>Disability</b>	<b>2009/10</b>	<b>2010/11</b>	<b>2011/12</b>
Visual Impairment	79.1%	77.0%	75.8%
Hearing Impairment	70.5%	74.3%	73.3%
Disability Affecting Mobility	75.0%	74.4%	69.3%
Other Physical Disability	70.1%	76.9%	70.4%
Other Medical Condition (For Example Epilepsy, Asthma, Diabetes)	72.4%	76.4%	74.2%
Emotional/Behavioural Difficulties	65.8%	67.8%	65.3%
Mental Health Difficulty	66.7%	69.6%	60.3%
Temporary Disability After Illness (For Example Post-Viral) or Accident	76.2%	70.6%	61.5%
Profound Complex Disabilities	68.8%	83.3%	87.0%
Asperger's Syndrome	71.6%	70.4%	72.6%
Multiple Disabilities	73.3%	76.2%	73.1%
Other	70.5%	71.6%	70.8%
No Disability	73.9%	76.5%	73.8%
Not Known/ Information not provided	71.2%	74.3%	75.2%
<b>Grand Total</b>	<b>73.8%</b>	<b>76.4%</b>	<b>73.8%</b>

61 In 2011/12, Apprenticeship success rates by learning difficulty ranged from 63.2 per cent for apprentices with multiple learning difficulties, to 74.3 per cent for learners with dyscalculia. [Table 11A.3]

**Table 11A.3: Apprenticeship Success Rates by Age and Learning Difficulty (2009/10 to 2011/12) – Percentages (extract)**

<b>Learning Difficulty</b>	<b>2009/10</b>	<b>2010/11</b>	<b>2011/12</b>
Moderate Learning Difficulty	63.7%	66.4%	63.7%
Severe Learning Difficulty	64.2%	63.7%	71.8%
Dyslexia	70.1%	72.6%	69.7%
Dyscalculia	69.0%	73.5%	74.3%
Other Specific Learning Difficulty	67.6%	67.2%	65.2%
Autism Spectrum Disorder	78.3%	71.0%	66.4%
Multiple Learning Difficulties	60.7%	59.6%	63.2%
Other	68.2%	70.1%	67.9%
No Learning Difficulty	74.3%	76.8%	74.0%
Not Known/ Information not provided	71.9%	75.0%	77.9%
<b>Grand Total</b>	<b>73.8%</b>	<b>76.4%</b>	<b>73.8%</b>

62 In 2011/12, adult Workplace learners who declared an LDD had a success rate of 89.0 per cent, 1.7 percentage points lower than for learners who did not declare an LDD. [Table 11B.1].

**Table 11B.1: Adult (19+) Workplace Learning Success Rates by Learners with Learning Difficulty and/or Disabilities (2011/12) - Percentages**

<b>Learners with Learning Difficulties and/or Disabilities</b>	<b>2011/12</b>
Learning Difficulty/Disability	89.0%
No Learning Difficulty/Disability	90.7%
Not Known	89.2%
<b>Grand Total</b>	<b>90.6%</b>

63 In Education and Training provision in 2011/12, learners who declared an LDD had a success rate of 84.0 per cent, the same as learners who did not declare an LDD [Table 11C.1].

**Table 11C.1: Adult (19+) Education and Training Success Rates by Learning Difficulties and/or Disabilities (2009/10 to 2011/12) – Percentages**

<b>Learners with Learning Difficulties and/or Disabilities</b>	<b>2009/10</b>	<b>2010/11</b>	<b>2011/12</b>
Learning Difficulty/Disability	80.4%	81.8%	84.0%
No Learning Difficulty/Disability	80.3%	81.6%	84.0%
Not Known	79.9%	78.7%	82.7%
<b>Grand Total</b>	<b>80.3%</b>	<b>81.4%</b>	<b>83.9%</b>

64 In Education and Training provision in 2011/12, the success rate by disability ranged from 81.1 per cent for learners with mental health difficulties, to 92.9 per cent for learners with profound complex disabilities. [Table 11C.2].

**Table 11C.2: Adult (19+) Education and Training Success Rates by Disability (2009/10 to 2011/12) - Percentages**

<b>Disability</b>	<b>2009/10</b>	<b>2010/11</b>	<b>2011/12</b>
Visual Impairment	82.3%	82.3%	85.6%
Hearing Impairment	82.6%	82.5%	85.1%
Disability Affecting Mobility	82.4%	83.5%	85.3%
Other Physical Disability	81.2%	82.3%	84.4%
Other Medical Condition (For Example Epilepsy, Asthma, Diabetes)	80.3%	81.9%	83.7%
Emotional/Behavioural Difficulties	81.8%	83.8%	85.1%
Mental Health Difficulty	77.9%	79.6%	81.1%
Temporary Disability After Illness (For Example Post-Viral) or	78.3%	79.3%	83.0%
Profound Complex Disabilities	91.3%	89.3%	92.9%
Asperger's Syndrome	82.1%	84.6%	85.1%
Multiple Disabilities	84.0%	86.0%	87.8%
Other	80.0%	81.6%	83.5%
No Disability	80.2%	81.5%	83.9%
Not Known/ Information not provided	80.1%	79.4%	83.5%
<b>Grand Total</b>	<b>80.3%</b>	<b>81.4%</b>	<b>83.9%</b>

65 In Education and Training provision in 2011/12, the success rate by learning difficulty ranged from 80.6 per cent for dyslexic learners, to 91.6 per cent for learners with a severe learning difficulty. [Table 11C.3].

**Table 11C.3: Adult (19+) Education and Training Success Rates by Learning Difficulty (2009/10 to 2011/12) - Percentages**

<b>Learning Difficulty</b>	<b>2009/10</b>	<b>2010/11</b>	<b>2011/12</b>
Moderate Learning Difficulty	84.3%	85.9%	87.5%
Severe Learning Difficulty	90.4%	91.6%	91.6%
Dyslexia	75.4%	77.5%	80.6%
Dyscalculia	79.2%	77.6%	80.7%
Other Specific Learning Difficulty	81.4%	82.7%	84.8%
Autism Spectrum Disorder	85.4%	87.9%	88.5%
Multiple Learning Difficulties	84.3%	87.0%	87.6%
Other	77.7%	80.0%	82.9%
No Learning Difficulty	80.1%	81.4%	83.9%
Not Known/ Information not provided	81.0%	80.2%	83.4%
<b>Grand Total</b>	<b>80.3%</b>	<b>81.4%</b>	<b>83.9%</b>

## Success Rates by Age

66 In 2011/12, apprentices under 19 had a success rate of 73.1 per cent; 19-24 apprentices had a success rate of 75.9 per cent and learners over 25 had a success rate of 72.6 per cent. [Table 12A]

**Table 12A: Apprenticeship Success Rates by Age (2009/10 to 2011/12) - Percentages**

<b>Age</b>	<b>2009/10</b>	<b>2010/11</b>	<b>2011/12</b>
Under 19	72.4%	74.0%	73.1%
19-24	74.9%	77.8%	75.9%
25+	75.1%	78.8%	72.6%
<b>Grand Total</b>	<b>73.8%</b>	<b>76.4%</b>	<b>73.8%</b>

67 In Adult Workplace Learning provision in 2011/12, success rates were highest for learners aged 45-59 and 60+ (91.6 per cent) and lowest for learners aged 19-24 (88.1 per cent) [Table 12B].

**Table 12B: Adult (19+) Workplace Learning Success Rates by Age (2011/12) – Percentages**

<b>Age</b>	<b>2011/12</b>
19-24	88.1%
25-34	90.3%
35-44	91.2%
45-59	91.6%
60+	91.6%
Not Known	-
<b>Grand Total</b>	<b>90.6%</b>

68 In Education and Training provision between 2009/10 and 2011/12, success rates were consistently highest for learners aged 60+, and lowest for learners aged 19-24. In 2011/12, 60+ learners had a success rate of 91.0 per cent, and learners aged 19-24 had a success rate of 81.9 per cent, a gap of 9.1 percentage points. This gap is narrower than the equivalent gap of 12.2 percentage points in 2009/10 [Table 12C].

**Table 12C: Adult (19+) Education and Training Success Rates by Age (2009/10 to 2011/12) - Percentages**

<b>Age</b>	<b>2009/10</b>	<b>2010/11</b>	<b>2011/12</b>
19-24	76.5%	79.0%	81.9%
25-34	79.2%	80.9%	83.4%
35-44	80.7%	81.9%	84.2%
45-59	82.0%	82.8%	85.1%
60+	88.8%	88.9%	91.0%
Not Known	87.6%	83.8%	87.4%
<b>Grand Total</b>	<b>80.3%</b>	<b>81.4%</b>	<b>83.9%</b>

## Success Rates by Ethnicity and Gender

69 In Apprenticeships in 2011/12:

- Female Asian or Asian British apprentices had a success rate of 70.4 per cent, 2.6 percentage points lower than male Asian or Asian British apprentices (72.9 per cent).
- Female Black or Black apprentices had a success rate of 66.1 per cent, 3.5 percentage points lower than male Black or Black British apprentices (69.5 per cent).
- Female apprentices of Mixed ethnicity had a success rate of 71.4 per cent, 1.4 percentage points higher than male Mixed apprentices (70.0 per cent).
- Female White apprentices had a success rate of 74.1 per cent, 0.2 percentage points lower than male White apprentices (74.3 per cent).
- Female Chinese or Other Ethnic Group learners had a success rate of 71.8 per cent, 0.1 percentage points higher than male Chinese or Other Ethnic Group learners (71.7 per cent) [Table 13A].

**Table 13A (extract)<sup>17</sup>: Apprenticeship Success Rates by Ethnicity and Gender (2009/10 to 2011/12) - Percentages**

Ethnicity	2009/10			2010/11			2011/12		
	Female	Male	All	Female	Male	All	Female	Male	All
Asian or Asian British	73.6%	71.1%	72.5%	76.8%	75.8%	76.2%	70.4%	72.9%	71.7%
Black or Black British	68.1%	72.7%	70.6%	70.6%	71.5%	71.1%	66.1%	69.5%	67.8%
Mixed	67.8%	73.9%	70.9%	70.7%	73.0%	71.9%	71.4%	70.0%	70.7%
White	74.4%	73.7%	74.0%	77.4%	75.9%	76.6%	74.1%	74.3%	74.2%
Chinese or Other Ethnic Group	71.8%	71.4%	71.6%	77.2%	71.9%	74.5%	71.8%	71.7%	71.8%
Not Known/Not Provided	72.7%	70.7%	71.7%	80.5%	76.0%	78.5%	73.6%	71.6%	72.7%
<b>Grand Total</b>	<b>74.1%</b>	<b>73.5%</b>	<b>73.8%</b>	<b>77.2%</b>	<b>75.7%</b>	<b>76.4%</b>	<b>73.7%</b>	<b>74.0%</b>	<b>73.8%</b>

<sup>17</sup> A full version of Table 13A, including breakdowns by age, is available in the spreadsheet accompanying this report.  
Report issued October 2013  
Equality and Diversity data report, 2009/10 to 2011/12



70 In Adult Workplace Learning provision in 2011/12, females had lower success rates than their male counterparts across all ethnic groups. [Table 13B].

**Table 13B: Adult (19+) Workplace Learning Success Rates by Ethnicity and Gender (2011/12) - Percentages**

Ethnicity	2011/12		
	Female	Male	All
Asian/ Asian British	90.4%	94.2%	93.2%
Black/ African/ Caribbean/ Black British	88.9%	91.6%	90.4%
Mixed/ Multiple Ethnic Group	88.5%	90.5%	89.6%
White	89.3%	91.1%	90.4%
Other Ethnic Group	88.1%	92.1%	90.7%
Not Known/Not Provided	85.5%	87.3%	86.6%
<b>Grand Total</b>	<b>89.2%</b>	<b>91.4%</b>	<b>90.6%</b>

71 In Adult Education and Training provision between 2009/10 and 2011/12, females had higher success rates than their male counterparts across all ethnic groups. [Table 13C].

**Table 13C: Adult (19+) Education and Training Success Rates by Ethnicity and Gender (2009/10 to 2011/12) Percentages**

Ethnicity	2009/10			2010/11			2011/12		
	Female	Male	All	Female	Male	All	Female	Male	All
Asian/ Asian British	79.5%	75.4%	78.2%	82.0%	78.1%	80.7%	84.6%	81.9%	83.6%
Black/ African/ Caribbean/ Black British	75.2%	73.3%	74.5%	77.8%	76.7%	77.4%	81.3%	81.2%	81.2%
Mixed/ Multiple Ethnic Group	75.3%	74.4%	74.9%	78.0%	77.8%	77.9%	81.3%	81.0%	81.2%
White	81.8%	81.0%	81.5%	82.7%	81.9%	82.4%	84.7%	84.6%	84.6%
Other Ethnic Group	78.1%	74.1%	76.7%	80.3%	76.7%	79.0%	82.9%	79.9%	81.7%
Not Known/Not Provided	81.9%	80.2%	81.2%	82.8%	81.4%	82.2%	84.0%	82.4%	83.3%
<b>Grand Total</b>	<b>80.7%</b>	<b>79.4%</b>	<b>80.3%</b>	<b>81.9%</b>	<b>80.7%</b>	<b>81.4%</b>	<b>84.1%</b>	<b>83.7%</b>	<b>83.9%</b>

**Success Rates by Ethnicity and Learning Difficulties and/or Disabilities**

72 In Apprenticeships in 2011/12, apprentices declaring LDD had lower success rates than their non-LDD counterparts across all ethnic groups. [Table 14A].

**Table 14A (Extract): Apprenticeship Success Rates by Ethnicity and Learning Difficulties and/or Disabilities (2009/10 to 2011/12) – Percentages**

Ethnicity	2009/10				2010/11				2011/12			
	Learning Difficulty/ Disability	No Learning Difficulty/ Disability	Not Known	All	Learning Difficulty/ Disability	No Learning Difficulty/ Disability	Not Known	All	Learning Difficulty/ Disability	No Learning Difficulty/ Disability	Not Known	All
Asian/ Asian British	71.7%	72.6%	66.7%	72.5%	72.3%	76.7%	63.6%	76.2%	71.4%	71.8%	68.5%	71.7%
Black/ African/ Caribbean/ Black British	67.6%	71.0%	60.5%	70.6%	64.9%	71.8%	52.1%	71.1%	67.7%	67.8%	69.0%	67.8%
Mixed/ Multiple Ethnic Group	66.2%	71.6%	-	70.9%	69.5%	72.3%	59.3%	71.9%	67.5%	71.1%	64.4%	70.7%
White	70.0%	74.5%	69.4%	74.0%	72.9%	77.1%	69.9%	76.6%	70.5%	74.5%	75.6%	74.2%
Other Ethnic Group	61.0%	72.8%	54.5%	71.6%	61.3%	75.7%	62.5%	74.5%	67.2%	70.6%	86.5%	71.8%
Not Known/Not Provided	72.7%	70.7%	82.5%	71.7%	72.5%	75.9%	90.7%	78.5%	70.6%	72.8%	72.7%	72.7%
<b>Grand Total</b>	<b>69.9%</b>	<b>74.3%</b>	<b>69.9%</b>	<b>73.8%</b>	<b>72.6%</b>	<b>76.8%</b>	<b>73.5%</b>	<b>76.4%</b>	<b>70.4%</b>	<b>74.1%</b>	<b>74.9%</b>	<b>73.8%</b>

73 In Adult Workplace Learning provision in 2011/12, learners across all ethnic groups who declared an LDD had lower success rates than those who did not. [Table 14B]

**Table 14B: Adult (19+) Workplace Learning Success Rates by Ethnicity and Learners with Learning Difficulties and/or Disabilities (2011/12) - Percentages**

Ethnicity	2011/12			
	No Learning Difficulty/Disability			All
	Learning Difficulty/Disability	Learning Difficulty/Disability	Not Known	
Asian/ Asian British	89.4%	93.3%	92.4%	93.2%
Black/ African/ Caribbean/ Black British	89.2%	90.4%	92.9%	90.4%
Mixed/ Multiple Ethnic Group	86.3%	89.8%	88.4%	89.6%
White	89.0%	90.5%	88.4%	90.4%
Other Ethnic Group	90.2%	90.7%	91.4%	90.7%
Not Known/Not Provided	80.0%	86.2%	89.0%	86.6%
<b>Grand Total</b>	<b>89.0%</b>	<b>90.7%</b>	<b>89.2%</b>	<b>90.6%</b>

**Table 14C: Adult (19+) Education and Training Success Rates by Ethnicity and Learners with Learning Difficulties and/or Disabilities (2009/10 to 2011/12) - Percentages**

Ethnicity	2009/10				2010/11				2011/12			
	No Learning Difficulty/Disability			All	No Learning Difficulty/Disability			All	No Learning Difficulty/Disability			All
	Learning Difficulty/Disability	Learning Difficulty/Disability	Not Known		Learning Difficulty/Disability	Learning Difficulty/Disability	Not Known		Learning Difficulty/Disability	Learning Difficulty/Disability	Not Known	
Asian/ Asian British	79.6%	78.3%	74.7%	78.2%	82.1%	80.8%	76.8%	80.7%	85.1%	83.6%	80.5%	83.6%
Black/ African/ Caribbean/ Black British	74.7%	74.8%	70.6%	74.5%	76.9%	77.9%	73.0%	77.4%	81.1%	81.4%	78.1%	81.2%
Mixed/ Multiple Ethnic Group	74.8%	75.1%	73.0%	74.9%	78.3%	78.0%	74.9%	77.9%	80.6%	81.4%	78.8%	81.2%
White	81.1%	81.5%	82.2%	81.5%	82.4%	82.6%	79.6%	82.4%	84.3%	84.7%	84.0%	84.6%
Other Ethnic Group	76.2%	77.0%	72.7%	76.7%	78.9%	79.1%	77.7%	79.0%	82.0%	81.7%	80.2%	81.7%
Not Known/Not Provided	82.8%	80.5%	82.3%	81.2%	82.2%	81.4%	84.3%	82.2%	82.6%	82.9%	85.1%	83.3%
<b>Grand Total</b>	<b>80.4%</b>	<b>80.3%</b>	<b>79.9%</b>	<b>80.3%</b>	<b>81.8%</b>	<b>81.6%</b>	<b>78.7%</b>	<b>81.4%</b>	<b>84.0%</b>	<b>84.0%</b>	<b>82.7%</b>	<b>83.9%</b>

## Success Rates by Gender and Learning Difficulties and/or Disabilities

74 In Apprenticeships in 2011/12, female apprentices who declared an LDD had a success rate that was:

- 0.6 percentage points higher than male apprentices who declared an LDD
- 3.3 percentage points lower than female apprentices who did not declare an LDD
- 3.7 percentage points lower than male apprentices who did not declare an LDD [Table 15A].

**Table 15A: Apprenticeship Success Rates by Age and Learners with Learning Difficulties and/or Disabilities and Gender (2009/10 to 2011/12) - Percentages**

Learners with Learning Difficulties and/or Disabilities	2009/10			2010/11			2011/12		
	Female	Male	All	Female	Male	All	Female	Male	All
Learning Difficulty/Disability	70.2%	69.5%	69.9%	73.1%	72.0%	72.6%	70.7%	70.0%	70.4%
No Learning Difficulty/Disability	74.7%	74.0%	74.3%	77.6%	76.1%	76.8%	74.0%	74.3%	74.1%
Not Known	70.5%	69.4%	69.9%	77.3%	69.8%	73.5%	75.1%	74.7%	74.9%
<b>Grand Total</b>	<b>74.1%</b>	<b>73.5%</b>	<b>73.8%</b>	<b>77.2%</b>	<b>75.7%</b>	<b>76.4%</b>	<b>73.7%</b>	<b>74.0%</b>	<b>73.8%</b>

75 In Workplace Learning provision in 2011/12, female learners who declared an LDD had a success rate that was:

- 1.9 percentage points lower than male learners who declared an LDD
- 1.5 percentage points lower than female learners who did not declare an LDD, and
- 3.6 percentage points lower than male learners who did not declare an LDD [Table 15B].

**Table 15B: Adult (19+) Workplace Learning Success Rates by Learners with Learning Difficulties and/or Disabilities and Gender (2011/12) – Percentages**

Learners with Learning Difficulties and/or Disabilities	2011/12		
	Female	Male	All
Learning Difficulty/Disability	87.9%	89.8%	89.0%
No Learning Difficulty/Disability	89.4%	91.5%	90.7%
Not Known	85.0%	92.1%	89.2%
<b>Grand Total</b>	<b>89.2%</b>	<b>91.4%</b>	<b>90.6%</b>



76 In Adult Education and Training in 2011/12, female learners who declared an LDD had a success rate that was:

- 0.5 percentage points lower than male learners who declared an LDD
- 0.5 percentage points lower than female learners who did not declare an LDD, and
- 0.1 percentage points higher than male learners who did not declare an LDD [Table 15C].

**Table 15C: Adult (19+) Education and Training Success Rates by Learners with Learning Difficulties and/or Disabilities and Gender (2009/10 to 2011/12) - Percentages**

	2009/10			2010/11			2011/12		
	Female	Male	All	Female	Male	All	Female	Male	All
<b>Learners with Learning Difficulties and/or Disabilities</b>									
Learning Difficulty/Disability	80.4%	80.4%	80.4%	81.8%	81.9%	81.8%	83.7%	84.2%	84.0%
No Learning Difficulty/Disability	80.8%	79.2%	80.3%	82.2%	80.6%	81.6%	84.2%	83.6%	84.0%
Not Known	80.2%	79.3%	79.9%	78.9%	78.3%	78.7%	83.0%	82.2%	82.7%
<b>Grand Total</b>	<b>80.7%</b>	<b>79.4%</b>	<b>80.3%</b>	<b>81.9%</b>	<b>80.7%</b>	<b>81.4%</b>	<b>84.1%</b>	<b>83.7%</b>	<b>83.9%</b>

## Support

Should you have any questions about the data analysis please contact the Data Service Service Desk on [servicedesk@thedataservice.org.uk](mailto:servicedesk@thedataservice.org.uk) or telephone 0870 2670001.

Should you have any queries on the Skills Funding Agency's equality activities, please contact [equality@skillfundingagency.bis.gov.uk](mailto:equality@skillfundingagency.bis.gov.uk).

<b>Date Published</b>	October 2013
<b>Version</b>	2