

Qualifications gained at UK Higher Education Institutions:

Northern Ireland analysis 2015/16

Date of Publication:
16 February 2017

Frequency of Publication:
Annual

Issued by:
Statistics and Research Branch
(Tertiary Education)
Department for the Economy
Adelaide House
39-49 Adelaide Street
Belfast
BT2 8FD

Public Enquiries:
Statistics and Research Branch
(Tertiary Education)
(028) 9025 7895

Statistician:
Kerry McColgan

Email:
analyticalservices@economy-ni.gov.uk

Internet:
<https://www.economy-ni.gov.uk/topics/statistics-and-economic-research/higher-education-statistics>

This statistical bulletin has been produced by the Department for the Economy (DfE) and provides information on qualifications gained by students at Northern Ireland (NI) Higher Education Institutions (HEIs) and by NI domiciled students at UK HEIs.

- At 18,160, the number of qualifications gained by NI domiciled students from UK HEIs in 2015/16 has remained stable for the third successive year (18,065 in 2014/15 and 18,150 in 2013/14) (Tables 1a and b).
- Three-quarters (75.2%) of NI domiciled 'first degree' graduates from UK HEIs achieved either a first class or upper second class honours degree in 2015/16 (Table 5b).
- During 2015/16, 46.4% of qualifications gained by NI domiciled students at UK HEIs were in a Broad STEM related subject and 22.9% in a Narrow STEM related subject (Table 4b).
- At 15,940, the number of qualifications gained by students from NI HEIs in 2015/16 has remained stable for the third successive year (16,010 in 2014/15 and 15,910 in 2013/14) (Tables 6b and 6c).
- In 2015/16, 74.4% of 'first degree' graduates from NI HEIs achieved either a first class or upper second class honours degree (Table 9b).
- During 2015/16, 46.9% of qualifications gained by students at NI HEIs were in a Broad STEM related subject and 22.8% in a Narrow STEM related subject (Table 8b).

READER INFORMATION

Purpose	Monitor and report on 1) NI domiciled Qualifiers from Higher Education Institutions in the United Kingdom, and 2) All Qualifiers from NI Higher Education Institutions.
Authors	Kerry McColgan, Andy Bannon, Michael MacNeill.
Publication Date	Thursday 16th February 2017
Reporting Period	Academic Years 2006/07 to 2015/16
Publication Issue	20
Statistical Quality	Information detailed in this release has been quality assured with the Higher Education Statistics Authority (HESA) prior to release.
Target audience	Department for the Economy (DfE), Directors of HE Institutions in Northern Ireland, Board members of HE Institutions, educational professionals, academics, media and members of the public interested in the HE sector.
Further copies from	analyticalservices@economy-ni.gov.uk
Internet address	https://www.economy-ni.gov.uk/topics/statistics-and-economic-research/higher-education-statistics
Price	Free
Copyright	This publication is Crown copyright and may be reproduced free of charge in any format or medium. Any material used must be acknowledged, and the title of the publication specified.
Feedback	<p>As we want to engage with users of our statistics, we invite you to feedback your comments on this publication to:</p> <p>Michael MacNeill – Michael.MacNeill@economy-ni.gov.uk (Tel: 028 90 2 57897)</p> <p>Kerry McColgan – Kerry.McColgan@economy-ni.gov.uk (Tel: 028 90 2 57753)</p> <p>Andy Bannon – Andrew.Bannon@economy-ni.gov.uk (Tel: 028 90 2 57895)</p>

TABLE OF CONTENTS

Reader Information	Page 2
Table of Contents	Page 3
List of Figures	Page 4
Statistics and Research Branch	Page 5
Key Statistics	Page 6
Introduction	Page 8
Structure of Report	Page 11
Section 1: Northern Ireland domiciled students gaining Higher Education qualifications at UK Higher Education Institutions	Page 12
Change over the last 10 years	Page 12
Breakdown of qualifications gained	Page 13
NI Multiple Deprivation Measure quintiles	Page 16
Subject of study	Page 16
Classification of first degree	Page 18
Section 2: Students gaining Higher Education qualifications at Northern Ireland Higher Education Institutions	Page 19
Change over the last 10 years	Page 19
Breakdown of qualifications gained	Page 20
Subject of study	Page 23
Classification of first degree	Page 24
Institutional breakdown	Page 25
UK comparison	Page 27
Notes and Definitions	Page 29
List of Tables	Page 35
Annex A: Tables	Page 39

LIST OF FIGURES

- [Figure 1](#): NI domiciled students gaining HE qualifications at UK HEIs - 2006/07 to 2015/16.....Page 12
- [Figure 2](#): NI domiciled students gaining HE qualifications at UK HEIs by location of study and level of qualification - 2015/16.....Page 14
- [Figure 3](#): NI domiciled students gaining HE qualifications at UK HEIs by mode of study and multiple deprivation measure quintile – 2015/16.....Page 16
- [Figure 4](#): NI domiciled students gaining HE qualifications at UK HEIs by gender and subject area - 2015/16.....Page 17
- [Figure 5](#): NI domiciled students gaining first degree qualifications at UK HEIs by classification - 2015/16.....Page 18
- [Figure 6](#): Qualifications gained at NI HEIs - 2006/07 to 2015/16.....Page 19
- [Figure 7](#): Students gaining HE qualifications at NI HEIs by level of qualification and gender - 2015/16.....Page 21
- [Figure 8](#): Students gaining HE qualifications at NI HEIs by subject and level of qualification - 2015/16.....Page 23
- [Figure 9](#): Students gaining first degree qualifications from NI HEIs by classification and gender - 2015/16.....Page 24
- [Figure 10](#): Students gaining HE qualifications at NI HEIs by year and institution - 2011/12 to 2015/16.....Page 25
- [Figure 11](#): Percentage change in qualifications gained at UK HEIs by level of qualification and location of institution - 2014/15 to 2015/16.....Page 27

Statistics and Research Branch (Tertiary Education) is responsible for the collection, quality assurance, analysis and publication of timely and accurate information derived from a wide range of statistical information returns supplied by the Higher Education Institutions (HEIs) and Further Education (FE) colleges across Northern Ireland (NI) and the Higher Education Statistics Agency (HESA) focused on NI HEIs and NI domiciled students in attendance at any UK HEI. Statistical information is collected routinely from a variety of electronic individual level administrative systems.

The Head of the Branch is the Principal Statistician, Brian French. The Branch aims to present information in a meaningful way and provide advice on its uses to customers in the Economy Committee, FE colleges, universities, Professional Advisory Groups, policy branches within the DfE, other educational organisations, academia, private sector organisations, charity/voluntary organisations, as well as the general public.

The statistical information collected is used to contribute to major exercises such as reporting on the performance of the Higher Education (HE) and FE sectors, other comparative performance exercises, target setting and monitoring, departmental research projects, development of service frameworks as well as policy formulation and evaluation. In addition, the information is used in response to a significantly high volume of Assembly questions and ad hoc queries each year.

Information is disseminated through a number of key statistical publications, including: HE enrolments; HE qualifications; Destinations of leavers from Higher Education (DLHE); FE activity; and Essential Skills enrolments and outcomes.

A detailed list of these publications is available from:

Website: <https://www.economy-ni.gov.uk/topics/statistics-and-economic-research/higher-and-further-education-and-training-statistics>

KEY STATISTICS FOR NORTHERN IRELAND DOMICILED QUALIFIERS FROM UK HEIs

<p>The number of NI domiciled qualifiers from UK HEIs has remained stable in recent years.....</p>	<p>At 18,160, the number of qualifications gained by NI domiciled students from UK HEIs in 2015/16 has remained stable for the third successive year (18,065 in 2014/15 and 18,150 in 2013/14).</p>
<p>...but more NI students are graduating from NI HEIs than a decade ago.</p>	<p>The number of qualifications gained by NI students at NI HEIs (excluding the Open University) has increased by a net 2.9% from 12,400 in 2006/07 to 12,755 in 2015/16.</p>
<p>The vast majority of qualifications are from full time courses.....</p>	<p>Of the 18,160 qualifications gained in 2015/16, 77.7% were through full-time study.</p>
<p>....with more qualifying at First Degree level.</p>	<p>'First degree' qualifications gained have experienced the largest percentage increase (15.0%) over the last ten years (10,330 to 11,875). 'Postgraduate' qualifications gained have increased by 7.3% from 4,110 to 4,410. In contrast, the number of qualifications gained by students enrolled on 'other undergraduate' courses has decreased by 44.6% (3,390 to 1,875).</p>
<p>More females qualifying than males.....</p>	<p>In 2015/16, of the 18,160 NI domiciled students gaining qualifications, almost three-fifths (59.1%) were female. Four-fifths (80.3%) of male students gaining a qualification had studied full-time, compared with 75.9% of female students qualifying.</p>
<p>.....and there is variation by gender, in terms of the course subject area.</p>	<p>Females accounted for 83.9% of qualifications gained in 'subjects allied to medicine', 74.1% of those gained in 'education' and 73.5% of those gained in 'languages' in 2015/16. Male-dominated subject areas included 'engineering and technology' (82.1%), 'computer science' (75.3%) and 'architecture, building and planning' (66.6%).</p>
<p>A higher proportion of males qualified in a STEM subject.....</p>	<p>During 2015/16, 46.4% of qualifications gained by NI domiciled students at UK HEIs were in a Broad STEM related subject. A higher proportion of males (50.4%) than females (43.7%) gained their qualification in a Broad STEM related subject.</p> <p>Just over a fifth (22.9%) of qualifications gained by NI domiciled students at UK HEIs were in a Narrow STEM related subject. Again a higher proportion of males (34.6%) than females (14.7%) gained their qualification in a Narrow STEM related subject.</p>
<p>.....but a higher proportion of females graduated with a first class or second class upper degree.</p>	<p>In 2015/16, three-quarters (75.2%) of NI domiciled first degree graduates (excluding those attaining an unclassified first degree) achieved either a first class or upper second class honours degree.</p> <p>Females (78.4%) were more likely than males (70.9%) to achieve a first class or upper second class honours degree.</p>

KEY STATISTICS FOR QUALIFIERS FROM NORTHERN IRELAND HEIs

The number of qualifiers from NI HEIs has remained stable in recent years...

At 15,940, the number of qualifications gained by students from NI HEIs in 2015/16 has remained stable for the third successive year (16,010 in 2014/15 and 15,910 in 2013/14).

...but the proportion of NI domiciled graduates is smaller than a decade ago.

In 2015/16 qualifications gained by NI students at NI HEIs accounted for 82.7% of all qualifications gained at NI HEIs, compared with 86.6% in 2006/07.

The vast majority of qualifications gained are from full time courses.....

Of the 15,940 qualifications gained by students at NI HEIs in 2015/16, 73.3% were through full-time study.

....and at 'First Degree' level.

Of the 15,940 qualifications gained by students at NI HEIs, 9,475 (59.4%) were a 'first degree' qualification, 1,970 (12.4%) an 'other undergraduate' qualification and 4,495 (28.2%) a postgraduate qualification.

More females qualifying than males.....

In 2015/16, of students gaining qualifications at NI HEIs, almost three-fifths (59.0%) were female. Over three-quarters (77.9%) of male students gaining a qualification had studied full-time, compared with 70.0% of female students qualifying.

.....and there is variation in gender, in terms of the course subject area.

Females accounted for 84.1% of qualifications gained in 'subjects allied to medicine', 73.4% of those gained in 'education' and 72.5% of those gained in 'languages' in 2015/16. Male-dominated subject areas included 'engineering and technology' (81.7%), 'computer science' (74.7%) and 'architecture, building and planning' (64.5%).

A higher proportion of males qualified in a STEM subject.....

During 2015/16, 46.9% of qualifications gained by students at NI HEIs were in a Broad STEM related subject. A higher proportion of males (49.7%) than females (44.9%) gained their qualification in a Broad STEM related subject.

Just over a fifth (22.8%) of qualifications gained by students at NI HEIs were in a Narrow STEM related subject. Again a higher proportion of males (34.2%) than females (15.0%) gained their qualification in a Narrow STEM related subject.

.....but a higher proportion of females graduated with a first class or second class upper degree.

In 2015/16, 74.4% of 'first degree' graduates (excluding those attaining an unclassified first degree) achieved either a first class or upper second class honours degree.

Females (77.7%) were more likely than males (69.9%) to achieve a first class or upper second class honours degree.

Coverage

This statistical bulletin has been produced by the Department for the Economy (DfE) and presents information on Higher Education (HE) qualifications gained by Northern Ireland (NI) domiciled students at Higher Education Institutions (HEIs) in the UK in the 2015/16 academic year, and by all students at NI HEIs in the same time period. The statistics presented in this bulletin cover a range of topics including changes over the last ten years, mode and level of study, subject of study and classification of first degree.

National Statistics

The United Kingdom Statistics Authority (the Authority) has designated these statistics as National Statistics, in accordance with the Statistics and Registration Service Act 2007 and signifying compliance with the [Code of Practice](#) for Official Statistics.

National Statistics status means that Official Statistics meet the highest standards of trustworthiness, quality and public value.

All Official Statistics should comply with all aspects of the Code of Practice for Official Statistics. They are awarded National Statistics status following an assessment by the Authority's regulatory arm. The Authority considers whether the statistics meet the highest standards of Code compliance, including the value they add to public decisions and debate. Designation can be broadly interpreted to mean that the statistics: meet identified user needs; are well explained and readily accessible; are produced according to sound methods; and are managed impartially and objectively in the public interest.

Once statistics have been designated as National Statistics it is a statutory requirement that the Code of Practice shall continue to be observed. It is DfE's responsibility to maintain compliance with the standards expected of National Statistics. If we become concerned about whether these statistics are still meeting the appropriate standards, we will discuss any concerns with the Authority promptly. National Statistics status can be removed at any point when the highest standards are not maintained, and reinstated when standards are restored.

Policy and Operational Context

The Minister for the Economy has responsibility within the NI Executive and to the NI Assembly for the NI Higher Education Institutions (HEIs) and their students; and for student support for NI-domiciled students in NI and the rest of the UK. The Assembly's Economy Committee has a scrutiny role in regard to these issues.

There continues to be a lot of media interest in the HE sector and HE statistics. With changes in fee regimes throughout the UK and the effect of the economic recession, the demand for HE is often in the spotlight.

It is within this context that DfE is implementing [Graduating to Success](#), its Higher Education strategy, which aims to promote and sustain the development of an internationally competitive sector, accessible to all who are able to benefit, and meeting

the needs of the Northern Ireland economy and wider society. This bulletin forms part of the evidence base which shapes the future strategies and policies of DfE.

Data Collection

The information presented in this statistical bulletin is based on data supplied by the Higher Education Statistics Agency (HESA). HESA is the official agency for the collection of information on publicly funded UK HEIs. It was set up in 1993 following the White Paper 'Higher Education: a new framework', which called for more coherence in HE statistics. In this context, HEIs include all publicly-funded universities. The HESA data presented in this bulletin relate to students at UK HEIs and, therefore, do not include HE qualifications gained at FE colleges in NI or GB, or at institutions in the Republic of Ireland (ROI).

Rounding Strategy

To prevent the identification of individuals, figures throughout the report are rounded to the nearest 5, with 0, 1, and 2 rounded to 0. Due to rounding the sum of numbers in each row or column may not match the total shown. Percentages are based on unrounded figures. Percentages have also been rounded to one decimal place. More information on the rounding strategy can be found in the [notes and definitions](#) section.

Data Quality

All information presented in this bulletin has been validated and quality assured by HEIs prior to publication. HEIs are given a set period of time to submit the information to HESA. Following submission, both HESA and DfE perform a series of validation checks to ensure that information is consistent both within and across returns. Trend analyses are used to monitor annual variations and emerging trends. Queries arising from validation checks are presented to HEIs for clarification and, if required, returns may be amended and/or re-submitted. Finally, prior to publication, the data are presented to HEIs for a final sign-off. More detail is available via the link [Quality of Higher Education Statistics](#).

Who will be interested in this bulletin?

The information presented in this statistical bulletin will be of interest to a wide variety of people. For example, the statistics within and those derived from this bulletin are currently used by: DfE policy officials in their role of assisting and advising the Minister for the Economy to discharge his duties; by the NI Assembly and Economy Committee to scrutinise the HE sector; by other governments such as DoF as a key indicator in the education domain of the NI Multiple Deprivation Measure (MDM); by prospective students to inform their choices around HE; by local businesses to quantify the supply of graduates in their business area; and by researchers and academics to try and understand the underlying trends in HE. Further details about the uses made of HE statistics can be found in the [notes and definitions](#) section.

Main Uses of HE statistics

The main uses of these data are to monitor HE qualifications and the characteristics of students qualifying both from NI and to NI HEIs. This helps assess HEI performance, corporate monitoring, informing and monitoring related policy, and responding to parliamentary/assembly questions and ad hoc queries from the public.

DfE is responsible for the policy, strategic development and financing of the statutory HE sector. Analysis of data trends against key strategic priorities remain a crucial component of data development within DfE.

HE Activity Elsewhere

Summary figures for the four UK administrations were published by HESA in their Statistical First Release on 12th January 2017.

This statistical first release can be viewed at the following page -

<https://www.hesa.ac.uk/news/12-01-2017/sfr242-student-enrolments-and-qualifications>

More in depth reports for England, Scotland and Wales can be downloaded from the following pages:

England - <http://www.bis.gov.uk/policies/higher-education/research-analysis>

Scotland - <http://www.scotland.gov.uk/Topics/Statistics/Browse/Lifelong-learning>

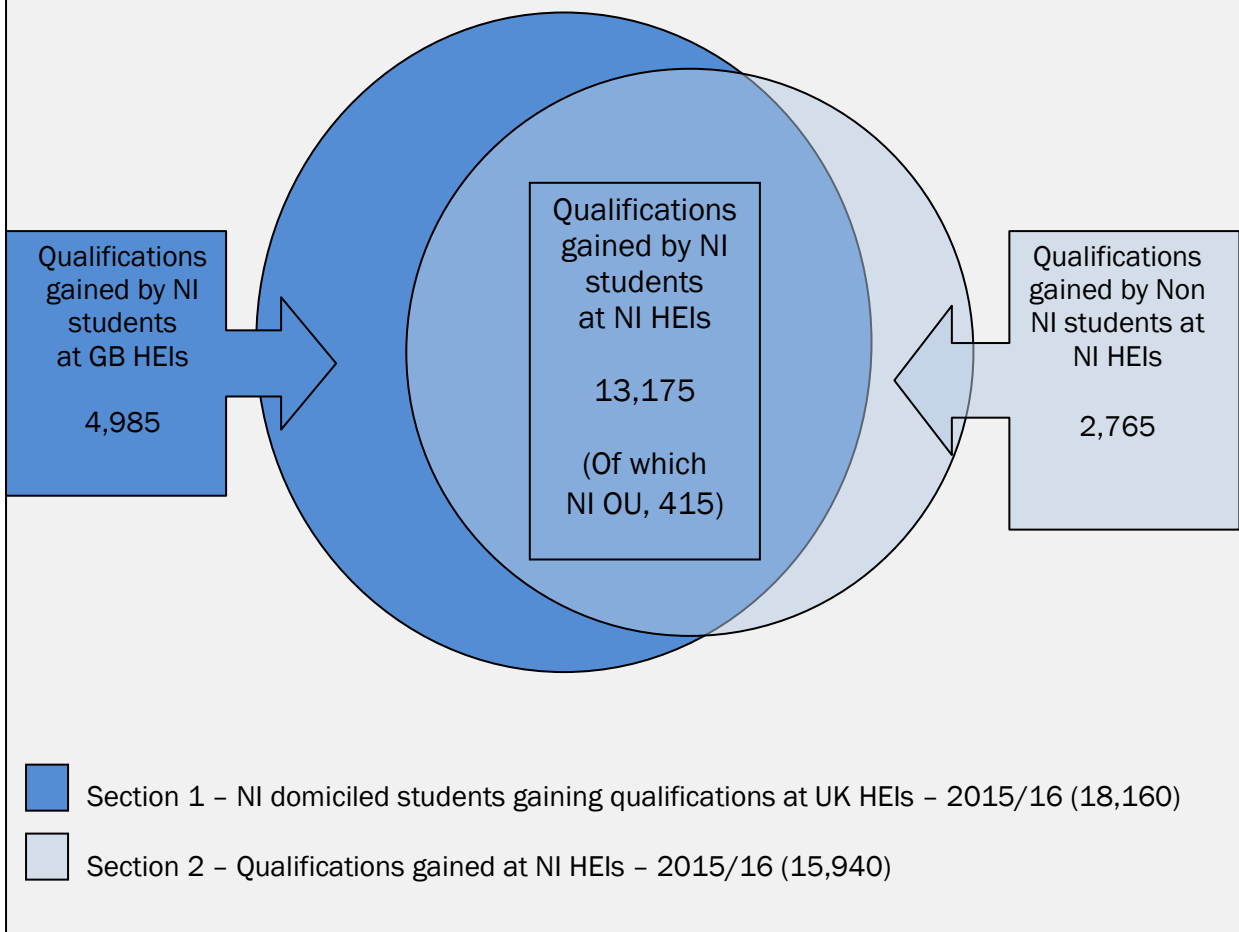
Wales - <http://wales.gov.uk/topics/statistics/theme/post16ed/higher-educa>

STRUCTURE OF REPORT

The bulletin is divided into two sections. Section 1 focuses on NI domiciled students gaining qualifications at HEIs in NI, England, Scotland or Wales. Section 2 concentrates on all students gaining qualifications at NI HEIs. This division into two sections reflects the two distinct policy and operational responsibilities of the Minister and the Department. Furthermore, it is clear from customer feedback, the nature of questions on HE asked in the Northern Ireland Assembly, and coverage of HE issues in the local media, that these two aspects are of key interest to readers.

It is worth noting that there is a large overlap between Section 1 and Section 2, namely qualifications gained by NI students enrolled at NI HEIs are included in both sections of the bulletin. See the diagram below for details:

Diagram summarising the structure of the bulletin: Qualifications 2015/16

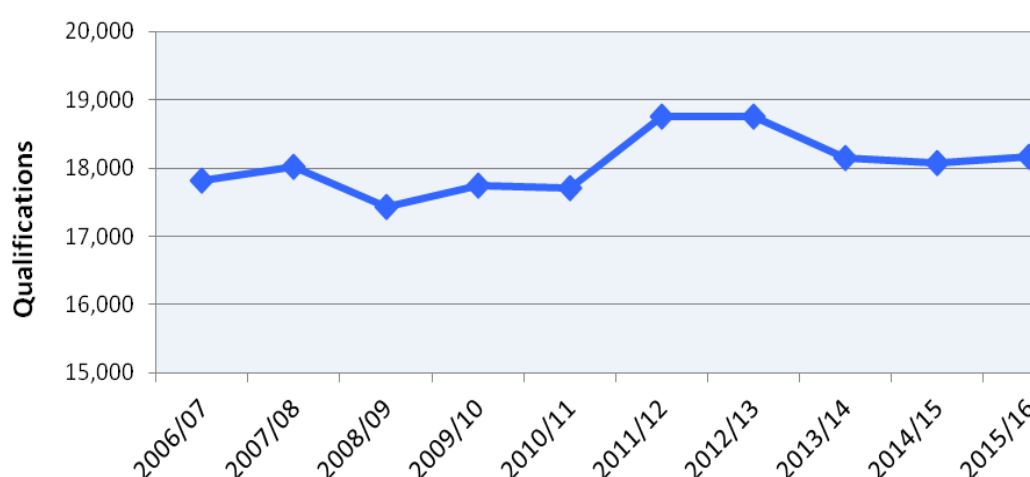


Section 1: Northern Ireland domiciled students gaining Higher Education qualifications at UK Higher Education Institutions (Tables 1 to 5b)

1.1 Change over the last 10 years – 2006/07 to 2015/16 (Tables 1 to 1f, Figure 1)

At 18,160, as Figure 1 illustrates, the number of qualifications gained by NI domiciled students from UK HEIs in 2015/16 has remained stable for the third successive year (18,065 in 2014/15 and 18,150 in 2013/14). Although the number of qualifications gained has increased by a net 1.9% over the past 10 years, this has been subject to fluctuation. Following a period of relative stability between 2006/07 (17,825) and 2010/11 (17,710), the number of qualifications gained increased to a peak of 18,750 (in both 2011/12 and 2012/13), before decreasing again towards its current level (Tables 1a, 1b and 1c, Figure 1).

Figure 1 - NI domiciled students gaining HE qualifications at UK HEIs - 2006/07 to 2015/16



In terms of location of institution, although fluctuating, the number of qualifications gained by NI students at NI HEIs (excluding the OU) has increased by a net 2.9%, from 12,400 in 2006/07 to 12,755 in 2015/16. Over the period between 2006/07 and 2013/14, the number of NI students gaining qualifications at GB HEIs increased year on year from 4,675 to 5,340 respectively. However, since then the numbers have dropped slightly each year, with a 3.0% decrease between 2014/15 (5,135) and 2015/16 (4,985). Between 2006/07 and 2015/16, the number of qualifications gained by NI students through the OU in the 10 year period has decreased by 44.3%, from 750 to 420 (Tables 1a and 1b).

There has been a 1.2 percentage point net increase in the proportion of NI students gaining qualifications at GB HEIs, from 26.2% (4,675) in 2005/06 to 27.4% (4,985) in 2015/16. However, this proportion peaked in 2013/14 (29.4%) and has fallen year on year since then (Table 1a).

In terms of the level of qualification gained by NI domiciled students at UK HEIs, 'first degree' qualifications have experienced the largest percentage increase (15.0%) over the last ten years, from 10,330 to 11,875. 'Postgraduate' qualifications, similarly, have increased by 7.3%, from 4,110 to 4,410 over the same period. In contrast, the number of

qualifications gained by students enrolled on 'other undergraduate' courses (such as foundation degrees, diplomas, HNDs and HNCs) has fallen by 44.6%, from 3,390 in 2006/07 to 1,875 in 2015/16 (Tables 1d and 1e).

The number of qualifications gained by NI domiciled students at UK HEIs through full-time study rose by 15.3% over the decade, from 12,235 to 14,105, in contrast to a 27.5% decrease in qualifications gained through part-time study (5,585 to 4,050) (Table 1a and 1b).

1.2 Breakdown of qualifications gained – 2015/16 (Tables 1f to 2f, Figures 1 and 2)

All Higher Education Qualifications

In 2015/16, 18,160 qualifications were gained by NI domiciled students at UK HEIs; a 0.5% increase from 18,065 in 2014/15 (Tables 1a and 1c).

Mode of study – Of the 18,160 qualifications gained in 2015/16, 77.7% were through full-time study (Table 2b).

Between 2014/15 and 2015/16, the number of full-time students gaining qualifications increased by 1.6%, from 13,880 to 14,105, whereas the number of part-time qualifiers decreased by 3.2%, from 4,185 to 4,050, over the same period (Tables 1a and 1c).

Gender – In 2015/16, of the 18,160 NI domiciled students gaining qualifications, almost three-fifths (59.1%) were female. This is broadly reflective of the gender breakdown in NI domiciled enrolments¹ at UK HEIs. Four-fifths (80.3%) of the 7,425 male students gaining a qualification had studied full-time, compared with 75.9% of the 10,735 female students qualifying (Tables 2e and 2f).

Two-thirds (67.3%) of males qualifying in 2015/16 gained a 'first degree', while 9.5% gained an 'other undergraduate' qualification and 23.2% obtained a 'postgraduate' qualification. This compares with 64.1%, 10.9% and 25.0% respectively for female students (Table 2d).

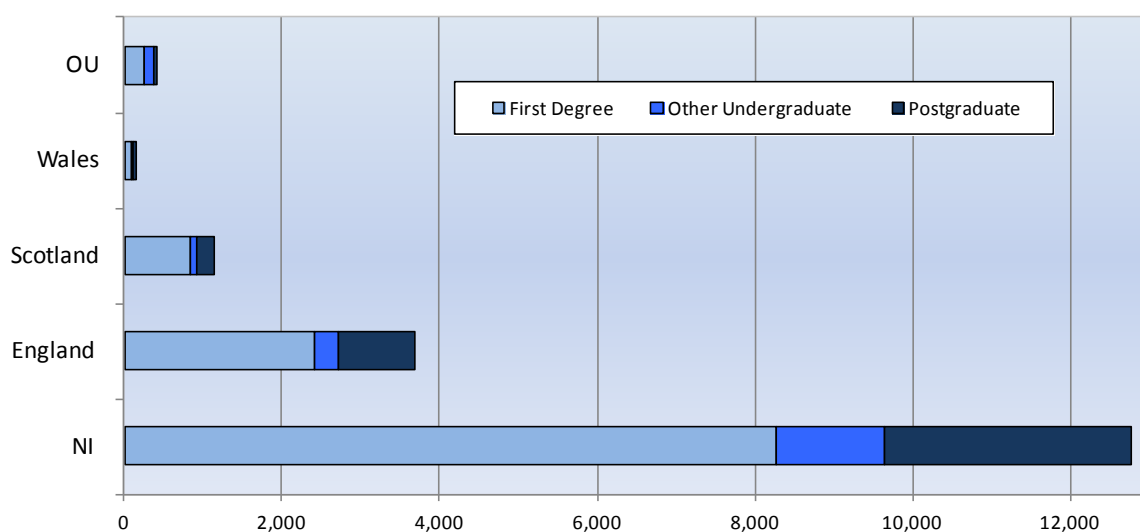
Location of study – In 2015/16, of the 18,160 NI domiciled students gaining qualifications, 70.3% studied at NI HEIs (excluding the OU), 27.4% at GB HEIs and 2.3% locally through the OU. In total, 72.5% of NI domiciled students gaining qualifications did so at NI HEIs (including 2.3% studying locally at the OU) (Tables 1a and 2c).

Of the 12,755 NI students gaining qualifications at NI HEIs (excluding the OU), 75.7% were through full-time study; this compares with 89.3% of the 4,985 qualifying from GB HEIs. All qualifications gained at the OU were through part-time study (420) (Table 2b).

Level of Qualification - Of the 18,160 qualifications gained by NI domiciled students at UK HEIs, 11,875 (65.4%) were 'first degree' qualifications, 1,875 (10.3%) were 'other undergraduate' qualifications and 4,410 (24.3%) were 'postgraduate' qualifications (Table 1d).

¹ See [2015/16 Higher Education Enrolments bulletin](#)

Figure 2 : NI domiciled students gaining HE qualifications at UK HEIs by location of study and level of qualification - 2015/16



‘First Degree’ Qualifications

In 2015/16, 11,875 ‘first degree’ qualifications were gained by NI domiciled students at UK HEIs; an increase of 1.4% from the 2014/15 figure of 11,715 (Tables 1d and 1f).

Mode of study – Of the 11,875 ‘first degree’ qualifications gained in 2015/16 92.7% were through full-time study and 7.3% through part-time study (Table 2b).

Between 2014/15 and 2015/16, the number of full-time students gaining ‘first degree’ qualifications increased by 2.4% from 10,745 to 11,005, whereas part-time numbers decreased by 10.4% from 970 to 870 over the same period (Tables 1d and 1f).

Gender – In 2015/16, of the 11,875 NI domiciled students gaining ‘first degree’ qualifications, 57.9% were female. Of the 4,995 male students gaining a ‘first degree’ qualification, 92.2% had studied full-time. Similarly, of the 6,880 female students gaining a ‘first degree’ qualification, 93.0% had studied full-time (Tables 2e and 2f).

Location of study – In 2015/16, of the 11,875 NI domiciled students gaining ‘first degrees’ at UK HEIs, 69.6% had studied at NI HEIs (excluding the OU), 28.2% at GB HEIs and 2.1% locally through the OU (Table 2c).

Of the 8,270 NI students gaining ‘first degrees’ at NI HEIs (excluding the OU), 93.5% had studied full-time; this compares with 97.8% of the 3,350 qualifying from GB HEIs. All those gaining ‘first degrees’ locally through the OU had studied part-time (255) (Table 2b).

‘Other Undergraduate’ Qualifications

In 2015/16, 1,875 ‘other undergraduate’ qualifications were gained by NI domiciled students at UK HEIs; a decrease of 2.3% from the 2014/15 figure of 1,920 (Tables 1d and 1f).

Mode of study – Of the 1,875 ‘other undergraduate’ qualifications gained in 2015/16, 62.2% were through part-time study (Table 2b).

Between 2014/15 and 2015/16, the number of full-time students gaining ‘other undergraduate’ qualifications decreased by 1.9%, from 725 to 710, while part-time numbers decreased by 2.5%, from 1,195 to 1,165, over the same period (Tables 1d and 1f).

Gender – In 2015/16, of the 1,875 NI domiciled students gaining ‘other undergraduate’ qualifications, 62.6% were female. Over half (53.6%) of the 700 male students gaining an ‘other undergraduate’ qualification had studied full-time, compared with 28.4% of the 1,175 female students qualifying (Tables 2e and 2f).

Location of study – In 2015/16, of the 1,875 NI domiciled students gaining ‘other undergraduate’ qualifications at UK HEIs, 72.3% had studied at NI HEIs (excluding the OU), 21.3% at GB HEIs and 6.4% locally through the OU (Table 2c).

Of the 1,355 NI students gaining ‘other undergraduate’ qualifications at NI HEIs, 70.4% had studied part-time; this compares with 22.6% of the 400 qualifying from GB HEIs. All those gaining ‘other undergraduate’ qualifications locally at the OU had studied part-time (120) (Table 2b).

‘Postgraduate’ Qualifications

In 2015/16, 4,410 ‘postgraduate’ qualifications were gained by NI domiciled students at UK HEIs; a decrease of 0.5% from the 2014/15 figure of 4,430 (Tables 1d and 1f).

Mode of study – Of the 4,410 ‘postgraduate’ qualifications gained in 2015/16, 54.2% were through full-time study (Table 2b). Between 2014/15 and 2015/16, the number of full-time students gaining ‘postgraduate’ qualifications decreased by 0.8% from 2,410 to 2,390, whereas there was little change in part-time numbers over the same period; 2,020 in 2014/15 compared with 2,015 in 2015/16 (Tables 1d and 1f).

Gender – In 2015/16, of the 4,410 NI domiciled students gaining ‘postgraduate’ qualifications, 60.9% were female. Of the 1,725 male students gaining ‘postgraduate’ qualifications, 56.5% had studied full-time, compared with 52.8% of the 2,685 female students qualifying (Tables 2e and 2f).

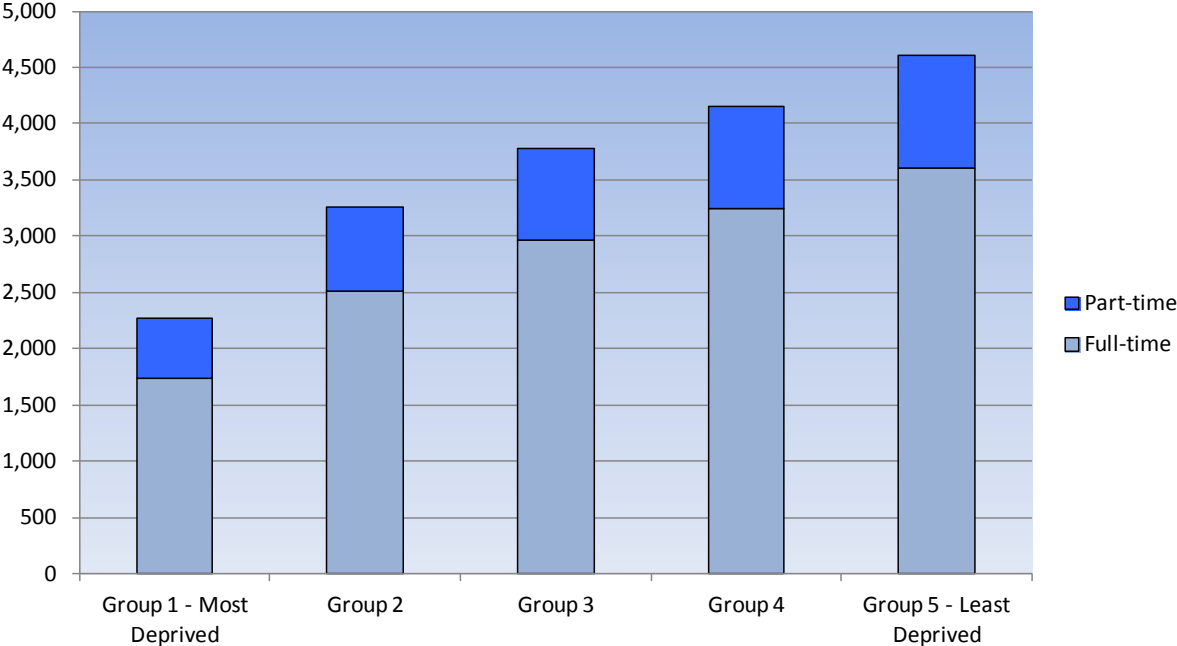
Location of study – In 2015/16, of the 4,410 NI domiciled students gaining ‘postgraduate’ qualifications at UK HEIs, 71.0% had studied at NI HEIs (excluding the OU), 28.0% at GB HEIs and 1.0% locally through the OU (Table 2c).

Of the 3,130 NI students gaining ‘postgraduate’ qualifications at NI HEIs, 51.3% had studied part-time; this compares with 29.9% of the 1,235 qualifying from GB HEIs. Those gaining ‘postgraduate’ qualifications locally at the OU had studied part-time (45) (Table 2b).

1.3 NI Multiple Deprivation Measure quintiles 2015/16 (Tables 3 and 3a, Figure 3)

Of the 18,070 NI domiciled students gaining qualifications at UK HEIs in 2015/16, for whom a NI MDM quintile could be assigned, twice as many (25.5%) were from the least deprived quintile (Group 5 in Figure 3), as from the most deprived quintile (12.6%; Group 1 in Figure 3) (Tables 3 and 3a).

Figure 3: NI domiciled students gaining HE qualifications at UK HEIs by mode of study and multiple deprivation measure quintile - 2015/16



1.4 Subject of Study 2015/16 (Tables 4 to 4d, Figure 4)

The most popular subject groups for NI students gaining qualifications at UK HEIs in 2015/16 were ‘subjects allied to medicine’ (15.3%), ‘business and administrative studies’ (12.4%) and ‘education’ (11.3%) (Table 4a).

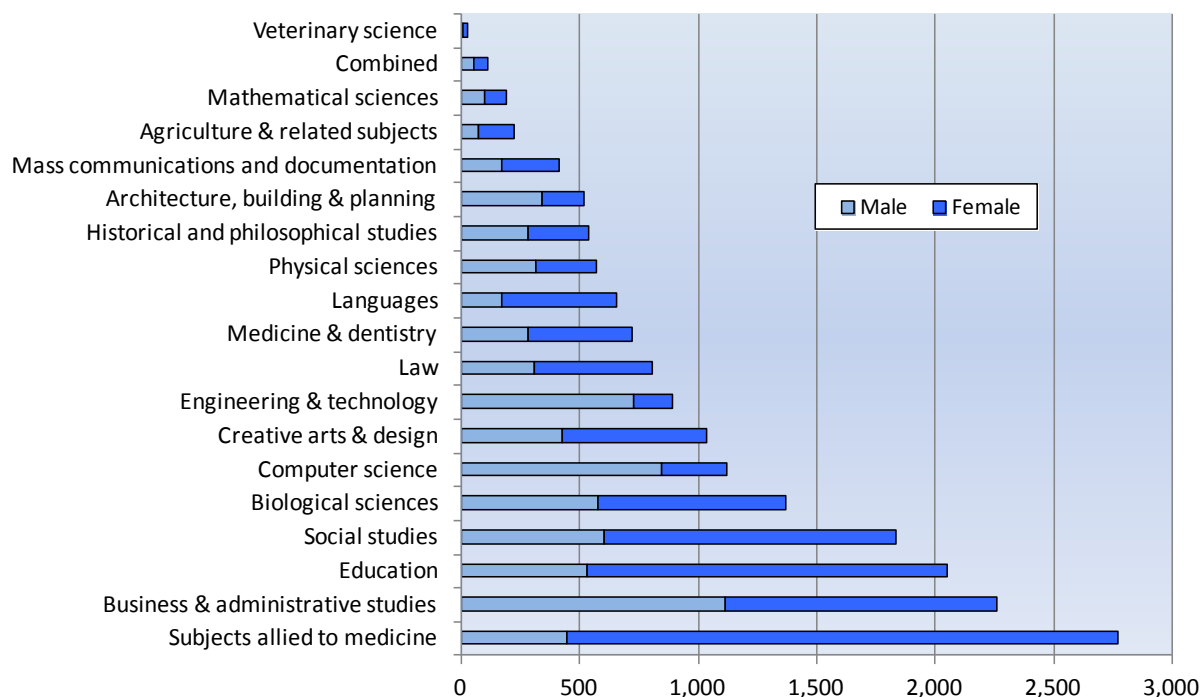
In 2015/16, females accounted for 83.9% of qualifications gained in ‘subjects allied to medicine’, 74.1% of those gained in ‘education’ and 73.5% of those gained in ‘languages’. In contrast, males accounted for 82.1% of qualifications gained in ‘engineering and technology’, 75.3% of ‘computer science’ qualifications and 66.6% of ‘architecture, building and planning’ qualifications (Table 4c).

The most popular subject groups for those NI students attaining a ‘first degree’ qualification at UK HEIs in 2015/16 were ‘subjects allied to medicine’ (15.4%), ‘business and administrative studies’ (13.4%) and ‘social studies’ (10.1%) (Table 4a).

For NI students attaining an ‘other undergraduate’ qualification at UK HEIs in 2015/16, the three most popular subject groups were ‘subjects allied to medicine’ (30.0%), ‘business and administrative studies’ (16.5%) and ‘education’ (14.2%) (Table 4a).

For those NI domiciled students attaining a ‘postgraduate’ qualification at UK HEIs in 2015/16, the three most popular subject groups were ‘education’ (27.1%), ‘social studies’ (11.6%) and ‘subjects allied to medicine’ (8.7%) (Table 4a).

Figure 4 : NI domiciled students gaining HE qualifications at UK HEIs by gender and subject area - 2015/16



The key priority identified within the Programme for Government 2011-15 is to grow a sustainable economy and invest in the future. To help achieve this, a target was set to increase the uptake in economically relevant Science, Technology, Engineering and Mathematics (STEM²) places in education.

In 2015/16, 46.4% of qualifications gained by NI domiciled students at UK HEIs were in a Broad STEM related subject. A higher proportion of males than females gained their qualification in a Broad STEM related subject; 50.4% compared with 43.7%. Of 'first degree' qualifications gained, 49.5% were in Broad STEM related subjects, compared with 49.1% for 'other undergraduate' qualifications and 37.0% for 'postgraduate' qualifications (Tables 4b and 4d).

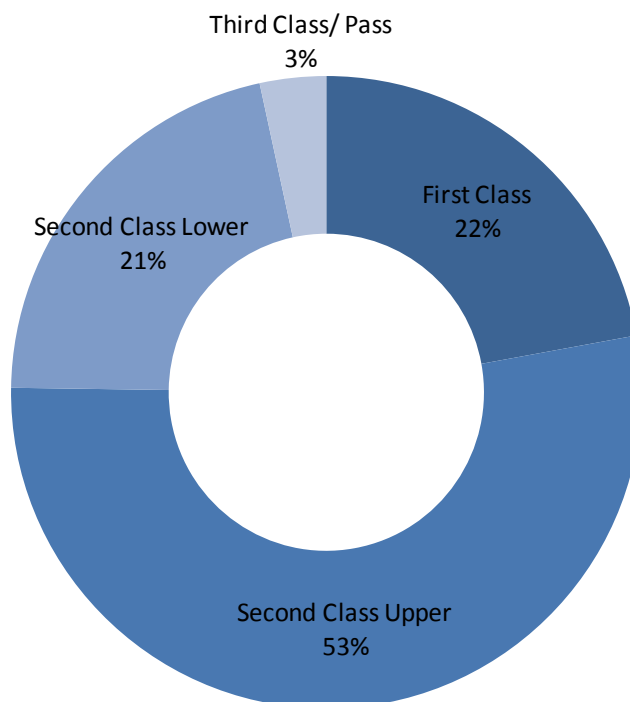
In 2015/16, 22.9% of qualifications gained by NI domiciled students at UK HEIs were in a Narrow STEM related subject. A higher proportion of males than females gained their qualification in a Narrow STEM related subject; 34.6% compared with 14.7%. Of 'first degree' qualifications gained, 25.8% were in Narrow STEM related subjects, compared with 17.3% for 'other undergraduate' qualifications and 17.3% for 'postgraduate' qualifications (Tables 4b and 4d).

² Science, Technology, Engineering and Maths – see notes to readers for full description.

1.5 Classification of first degree³ (Tables 5 to 5b, Figure 5)

In 2015/16, 75.2% (8,460) of NI domiciled 'first degree' graduates (excluding those 630 attaining an unclassified 'first degree') achieved either a first class or upper second class honours degree. Females (78.4%) were more likely than males (70.9%) to achieve a first class or upper second class honours degree (Table 5a and 5b).

Figure 5: NI domiciled students gaining first degree qualifications at UK HEIs by classification - 2015/16

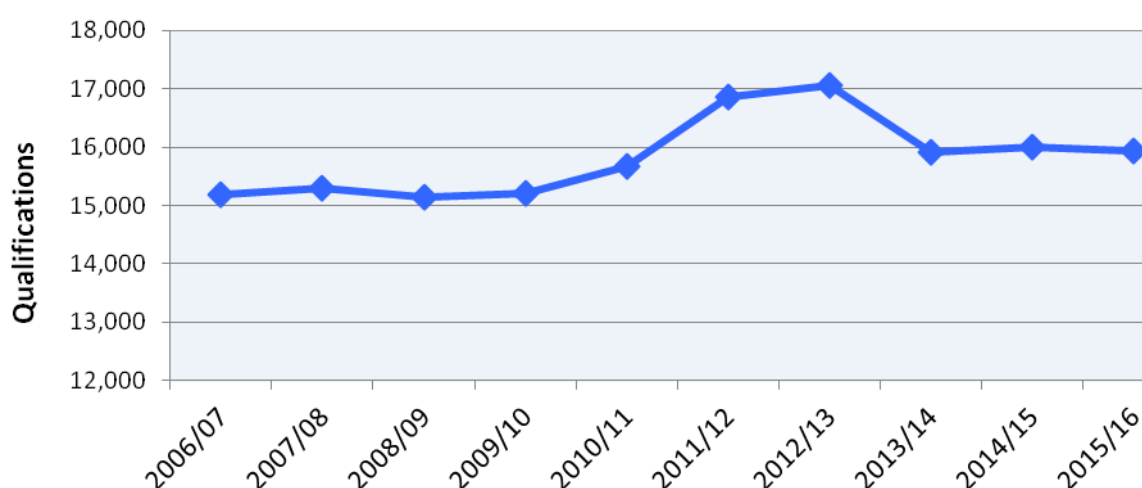


³ See [notes and definitions](#) point 17

2.1 Change over the last 10 years – 2006/07 to 2015/16 (Tables 6 to 6f, Figure 6)

At 15,940, as Figure 6 illustrates, the number of qualifications gained by students from NI HEIs in 2015/16 has remained stable for the third successive year (16,010 in 2014/15 and 15,910 in 2013/14). Although the number of qualifications gained has increased by a net 5.0% over the past 10 years, this has been subject to fluctuation. Following a period of relative stability between 2006/07 (15,185) and 2009/10 (15,215), the number of qualifications gained increased in successive years to a peak of 17,055 in 2012/13, before decreasing again towards its current level (Tables 6a, 6b and 6c).

Figure 6 - Qualifications gained at NI HEIs - 2006/07 to 2015/16



Qualifications gained by students from NI now make up a smaller proportion of the total number of qualifications gained at NI HEIs than they did 10 years ago. In 2006/07, qualifications gained by students from NI accounted for 86.6% (13,145) of the total number of qualifications gained at NI HEIs; by 2015/16, this proportion has decreased to 82.7% (13,175). Over this period, NI HEIs have seen a 35.7% increase in qualifications gained by students from outside NI, from 2,035 in 2006/07 to 2,765 in 2015/16. This is broadly reflective of the enrolment⁴ breakdown at NI HEIs, with a higher proportion from outside NI in 2015/16 than in 2006/07 (Tables 6a and 6b).

In terms of level of qualification, 'first degree' qualifications gained have increased by 12.1% from 8,455 to 9,475 over the 10 year period. 'Postgraduate' qualifications gained have also increased by 20.6%, from 3,725 to 4,495. In contrast, the number of qualifications gained by students on 'other undergraduate' courses (such as foundation degrees, diplomas, HNDs and HNCs) have decreased by 34.4%, from 3,005 in 2006/07 to 1,970 in 2015/16 (Tables 6d and 6e).

⁴ See [2015/16 Higher Education Enrolments bulletin](#) Table 8a.

The number of full-time qualifications gained has increased by a fifth (20.4%), from 9,695 to 11,675, over the last 10 years, whereas the number of part-time qualifications gained has decreased by 22.3%, from 5,485 to 4,265, over the same period (Tables 6b).

2.2 Breakdown of qualifications gained – 2015/16 (Tables 6a and 7f, Figures 6 and 7)

All Higher Education Qualifications

In 2015/16, 15,940 qualifications were gained by students at NI HEIs; a decrease of 0.4% from the 2014/15 figure of 16,010 (Tables 6a and 6c).

Mode of study – Of the 15,940 qualifications gained in 2015/16, 73.3% were through full-time study (Table 7b).

Between 2014/15 and 2015/16, the number of full-time students gaining qualifications increased by 0.2%, from 11,660 to 11,675, while part-time numbers decreased by 2.0%, from 4,350 to 4,265, over the same period (Table 6a and 6c).

Gender – In 2015/16, of the 15,940 students gaining qualifications at NI HEIs, 59.0% were female. This is broadly reflective of the gender breakdown in enrolments⁵ at NI HEIs. Of the 6,530 male students gaining a qualification, 77.9% had studied full-time, compared with 70.0% of the 9,410 female students qualifying (Table 7e and 7f).

In 2015/16, the majority of males (61.7%) gained a ‘first degree’, while 11.3% gained an ‘other undergraduate’ qualification and 26.9% obtained a ‘postgraduate’ qualification. The equivalent breakdown for females was 57.8%, 13.1% and 29.1% respectively (Table 7d).

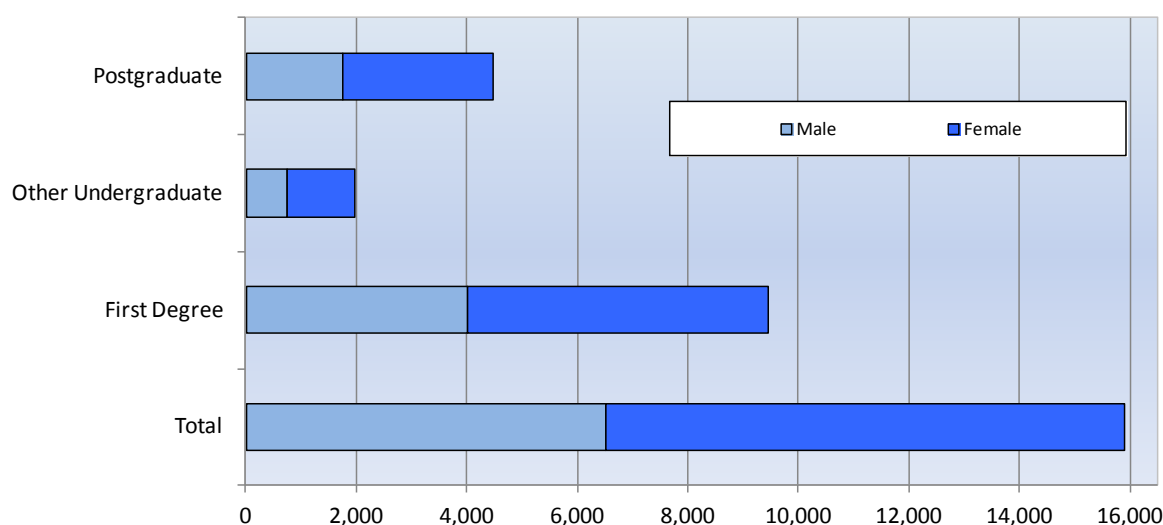
Domicile – In 2015/16, of the 15,940 students gaining a qualification at NI HEIs, 82.7% were from NI, 7.7% from Non EU countries, 4.7% from RoI, 4.3% from GB and 0.7% from other EU countries (Table 7c).

Of the 13,175 students from NI gaining qualifications at NI HEIs in 2015/16, 73.3% were full-time; this compares with 97.1% of the 1,225 students from non EU countries), 54.3% of the 745 students from RoI, 47.9% of the 685 students from GB and 90.7% of the 105 students from other EU countries (Table 7b).

Level of Qualification - Of the 15,940 qualifications gained by students at NI HEIs in 2015/16, 9,475 (59.4%) obtained a ‘first degree’ qualification, 1,970 (12.4%) an ‘other undergraduate’ qualification and 4,495 (28.2%) obtained a ‘postgraduate’ qualification (Table 6d).

⁵ See [2015/16 Higher Education Enrolments](#) bulletin

Figure 7 : Students gaining HE qualifications at NI HEIs by level of qualification and gender - 2015/16



‘First Degree’ Qualifications

In 2015/16, 9,475 ‘first degree’ qualifications were gained by students at NI HEIs; an increase of 2.0% from the 2014/15 figure of 9,285 (Tables 6d and 6f).

Mode of study – Of the 9,475 ‘first degree’ qualifications gained in 2015/16, 90.9% were through full-time study (Table 7b).

Between 2014/15 and 2015/16, the number of full-time students gaining ‘first degree’ qualifications increased by 3.0% from 8,360 to 8,615, whereas part-time numbers decreased by 7.3% from 925 to 860 over the same period (Tables 6d and 6f).

Gender – In 2015/16, of the 9,475 students gaining ‘first degrees’ at NI HEIs, 57.4% were female. Of the 4,030 male students gaining a ‘first degree’ qualification, 90.8% had studied full-time compared with 91.0% of the 5,440 female students qualifying (Tables 7e and 7f).

Domicile – In 2015/16, of the 9,475 students gaining ‘first degrees’ at NI HEIs, 90.0% were from NI, 4.1% from non EU countries, 2.8% from GB, 2.7% from RoI and 0.4% from other EU countries (Table 7c).

Of the 8,525 students from NI gaining ‘first degrees’ at NI HEIs in 2015/16, 90.7% were full-time. This compares with 98.2% of the 390 students from non EU countries, 95.1% of the 265 students from GB, 82.7% of the 255 students from RoI (255) and all 40 students from other EU countries (Table 7b).

'Other Undergraduate' Qualifications

In 2015/16, 1,970 'other undergraduate' qualifications were gained by students at NI HEIs; similar to the 2014/15 figure of 1,975 (Tables 6d and 6f).

Mode of study – Of the 1,970 'other undergraduate' qualifications gained in 2015/16, 64.3% were through part-time study (Table 7b).

Between 2014/15 and 2015/16, the number of full-time students gaining 'other undergraduate' qualifications decreased by 8.9%, from 770 to 705, whereas part-time numbers increased by 5.6% from 1,200 to 1,270 over the same period (Tables 6d and 6f).

Gender – In 2015/16, of the 1,970 students gaining 'other undergraduate' qualifications at NI HEIs, 62.4% were female. Of the 740 male students gaining an 'other undergraduate' qualification, 54.4% had studied full-time compared with 24.4% of the 1,230 female students qualifying (Tables 7e and 7f).

Domicile – In 2015/16, of the 1,970 students gaining 'other undergraduate' qualifications at NI HEIs, 74.9% were from NI, 14.8% from non EU countries, 5.5% from GB, 4.5% from RoI and 0.3% from other EU countries (Table 7c).

Of the 1,475 students from NI gaining 'other undergraduate' qualifications at NI HEIs, 72.9% were part-time. This compares with 1.0% of the 290 students from non EU countries, 93.5% of the 110 students from GB and 96.6% of the 90 students from RoI (Table 7b).

'Postgraduate' Qualifications

In 2015/16, 4,495 'postgraduate' qualifications were gained by students at NI HEIs; a decrease of 5.4% from the 2014/15 figure of 4,750 (Tables 6d and 6f).

Mode of study – Of the 4,495 'postgraduate' qualifications gained in 2015/16, 52.4% were through full-time study (Table 7b).

Between 2014/15 and 2015/16, the number of full-time students gaining a 'postgraduate' qualification decreased by 6.7% from 2,525 to 2,355, while part-time numbers decreased by 3.9% from 2,225 to 2,135 over the same period (Tables 6d and 6f).

Gender – In 2015/16, of the 4,495 students gaining 'postgraduate' qualifications at NI HEIs, 60.9% were female. Of the 1,755 male students gaining a 'postgraduate' degree, 58.0% were studying full-time compared with 48.9% of the 2,735 female students qualifying (Tables 7e and 7f).

Domicile – In 2015/16, of the 4,495 students gaining 'postgraduate' qualifications at NI HEIs, 70.6% were from NI, 12.1% from non EU countries, 8.9% from RoI, 7.0% from GB and 1.3% from other EU countries (Table 7c).

Of the 3,175 students from NI gaining 'postgraduate' qualifications at NI HEIs, 51.9% were part-time. This compares with 4.8% of the 545 students from non EU countries,

52.5% of the 400 students from RoI, 77.7% of the 315 students from GB and 13.3% of the 60 students from other EU countries (Table 7b).

2.3 Subject of study (Tables 8 to 8d, Figure 8)

The most popular subject groups for students gaining qualifications at NI HEIs in 2015/16 were ‘subjects allied to medicine’ (16.6%), business and administrative studies’ (16.4%) and ‘social studies’ (10.1%) (Table 8a).

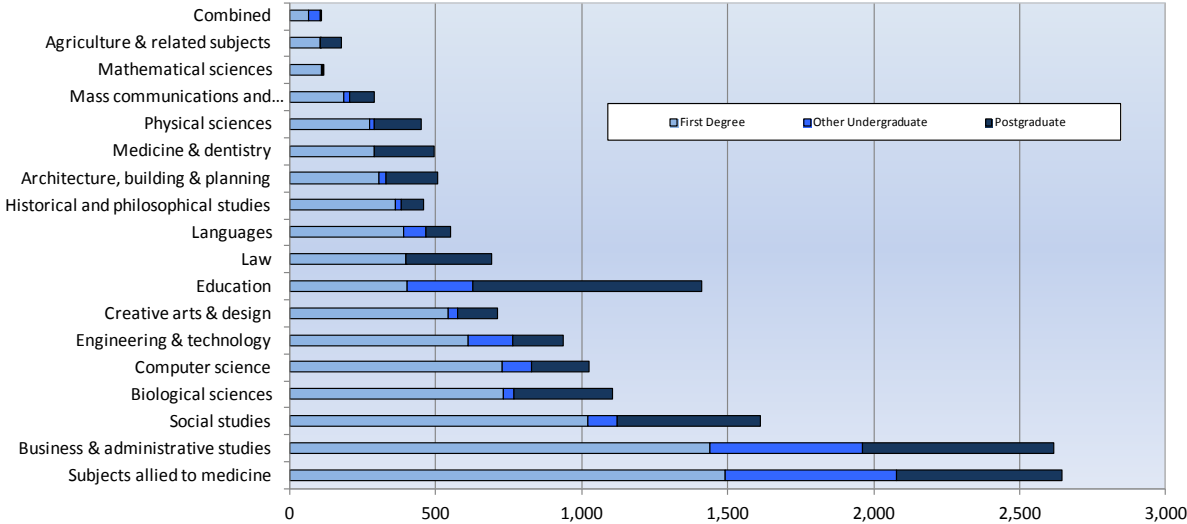
In 2015/16, females accounted for 84.1% of qualifications gained in ‘subjects allied to medicine’, 73.4% of those gained in ‘education’ and 72.5% of those gained in ‘languages’. In contrast, males accounted for 81.7% of qualifications gained in ‘engineering and technology’, 74.7% of ‘computer science’ qualifications and 64.5% of ‘architecture, building and planning’ qualifications (Table 8c).

The most popular subject groups for students attaining a ‘first degree’ qualification at NI HEIs in 2015/16 were ‘subjects allied to medicine’ (15.8%), ‘business and administrative studies’ (15.2%) and ‘social studies’ (10.8%) (Table 8a).

For students attaining an ‘other undergraduate’ qualification at NI HEI in 2015/16s, the three most popular subject groups were ‘subjects allied to medicine’ (29.8%), ‘business and administrative studies’ (26.5%) and ‘education’ (11.3%) (Table 8a).

For those students attaining a ‘postgraduate’ qualification at NI HEIs in 2015/16, the three most popular subject groups were ‘education’ (17.4%), ‘business and administrative studies’ (14.5%) and ‘subjects allied to medicine’ (12.5%) (Table 8a).

Figure 8 : Students gaining HE qualifications at NI HEIs by subject and level of qualification - 2015/16



A key priority identified within the Programme for Government 2011-15 is to grow a sustainable economy and invest in the future. To help achieve this, a target was set to increase the uptake in economically relevant Science, Technology, Engineering and Mathematics (STEM⁶) places in education.

⁶ Science, Technology, Engineering and Maths – see notes to readers for full description.

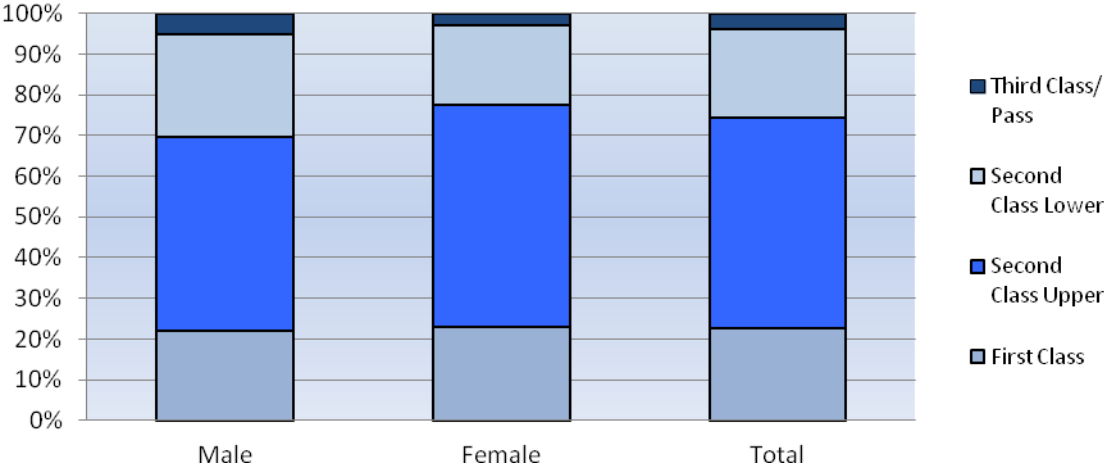
In 2015/16, 46.9% of qualifications gained by students at NI HEIs were in a Broad STEM related subject. A higher proportion of males than females gained their qualification in a Broad STEM related subject, 49.7% compared with 44.9%. Of 'first degree' qualifications gained, 49.1% were in Broad STEM related subjects, compared with 47.4% for 'other undergraduate' qualifications and 41.9% for 'postgraduate' qualifications (Tables 8b and 8d).

In 2015/16, 22.8% of qualifications gained by students at NI HEIs were in a Narrow STEM related subject. Male students (34.2%) were over twice as likely as female students (15.0%) to gain their qualification in a Narrow STEM related subject. Of 'first degree' qualifications gained, 25.9% were in Narrow STEM related subjects, compared with 16.2% for 'other undergraduate' qualifications and 19.3% for 'postgraduate' qualifications (Tables 8b and 8d).

2.4 Classification of first degree⁷ (Tables 9 to 9b, Figure 9)

In 2015/16, 74.4% (6,800) of 'first degree' graduates from NI HEIs (excluding those 330 attaining an unclassified 'first degree') achieved either a first class or upper second class honours degree. Females (77.7%) were more likely than males (69.9%) to achieve a first class or upper second class honours degree (Table 9a and 9b).

Figure 9 : Students gaining first degree qualifications from NI HEIs by classification and gender - 2015/16



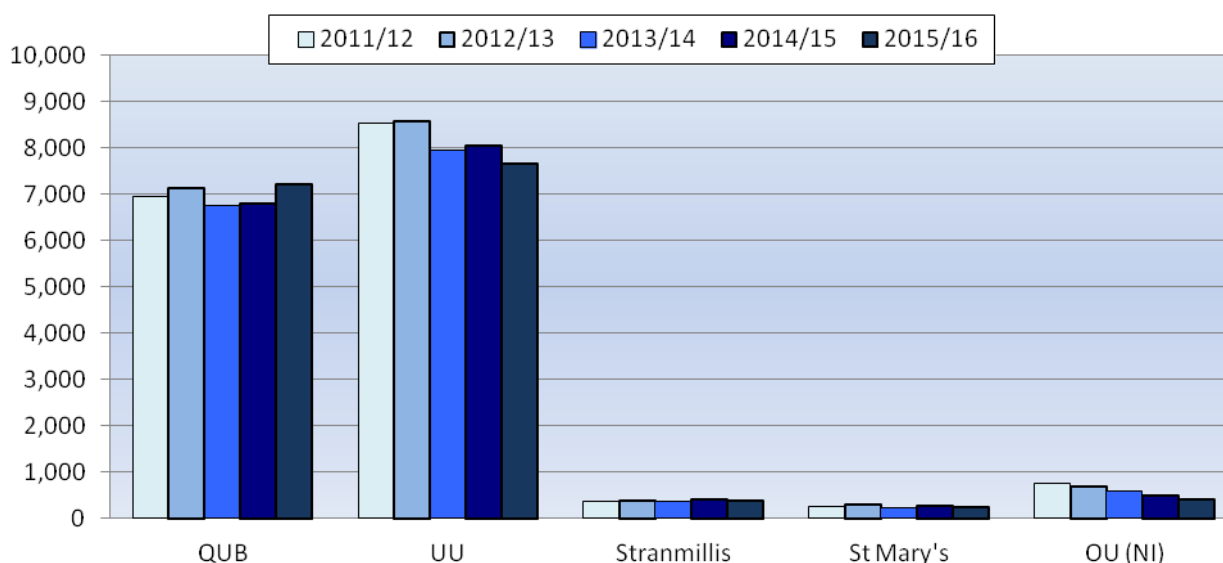
⁷ See [notes and definitions](#) point 17

2.5 Institutional breakdown (Tables 10 to 10c, Table 11, Figure 10)

Of all qualifications gained at NI HEIs in 2015/16, 48.1% were from Ulster University (UU), 45.2% from Queen’s University Belfast (QUB), 2.6% from the Open University, 2.5% from Stranmillis University College and 1.6% from St Mary’s University College (Table 10 and 10a).

The university with the greatest proportion of qualifications gained by students from outside NI was QUB (20.6%), followed by UU (16.6%). In contrast, very few non NI students gained qualifications from the other three NI HEIs (Table 11 a).

Figure 10 : Students gaining HE qualifications at NI HEIs by year and institution - 2011/12 to 2015/16



Ulster University:

The number of students gaining qualifications from UU decreased by 4.7%, from 8,050 in 2014/15 to 7,665 in 2015/16 (Table 10b).

The number of students gaining qualifications through full-time study from UU decreased by 4.3%, from 5,805 in 2014/15 to 5,550 in 2015/16, while those gaining qualifications through part-time study decreased by 5.8%, from 2,245 to 2,115, over the same period (Table 10b).

Between 2014/15 and 2015/16, ‘first degree’ qualifications gained from UU decreased by 0.3%, while ‘other undergraduate’ and ‘postgraduate’ degrees gained decreased by 13.1% and 9.5% respectively (Table 10c).

Queen’s University Belfast:

The number of qualifications gained by students from QUB increased by 5.9%, from 6,805 in 2014/15 to 7,210, in 2015/16 (Table 10b).

Within this, the number of students gaining qualifications through full-time study increased by 5.3%, from 5,335 in 2014/15 to 5,620, in 2015/16, while those gaining a qualification through part-time study increased by 7.9%, from 1,475 to 1,590, over the same period (Table 10b).

Between 2014/15 and 2015/16, 'first degree' qualifications gained from QUB increased by 6.4% and 'other undergraduate' qualifications gained increased by 39.2%, whereas 'postgraduate' qualifications gained decreased by 2.3% (Table 10c).

Open University (NI):

All qualifications gained from the OU during 2015/16 were from part-time study.

The number of students gaining qualifications through part-time study decreased by 15.8%, from 495 in 2014/15 to 415 in 2015/16 (Table 10b).

Between 2014/15 and 2015/16, 'first degree' qualifications gained locally from the OU decreased by 15.6%, while 'other undergraduate' qualifications gained decreased by 18.4%. 'Postgraduate' qualifications gained stayed at 45 for both years (Table 10c).

Stranmillis University College:

There were 400 qualifications gained by students from Stranmillis University College in 2015/16, the same as in 2014/15 (Table 10b).

Within this, the number of students gaining qualifications through full-time study decreased by 2.1%, from 280 in 2014/15 to 275 in 2015/16, whereas those gaining qualifications through part-time study increased by 4.3%, from 115 to 120, over the same period (Table 10b).

Between 2014/15 and 2015/16, 'first degree' qualifications gained at Stranmillis increased by 4.7% and 'postgraduate' qualifications gained increased by 28.3%, whereas 'other undergraduate' qualifications gained decreased by 31.1% (Table 10c).

St Mary's University College:

The number of students gaining qualifications from St Mary's University College decreased by 10, from 260 in 2014/15 to 250 in 2015/16 (Table 10b).

The number of students gaining qualifications through full-time study decreased by 10, from 240 in 2014/15 to 230 in 2015/16, while 20 qualifications were gained through part-time study, the same as in 2014/15 (Table 10b).

Between 2014/15 and 2015/16, 'First degree' qualifications at St Mary's decreased by 10, while the number of 'postgraduate' qualifications was 40 during both 2014/15 and 2015/16. There were no 'other undergraduate' qualifiers from St Mary's (Table 10c).

2.6 UK comparison (Tables 12 to 12b, Figure 11)

The number of students gaining qualifications at UK HEIs decreased by 0.3%, from 745,005 in 2014/15 to 742,730 in 2015/16 (Table 12a).

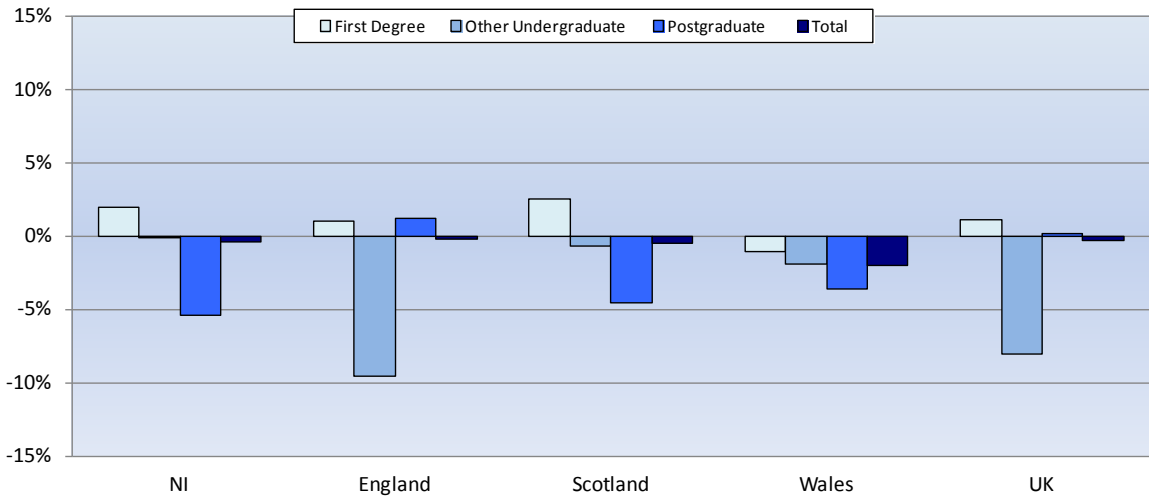
Over the same period, all UK countries saw decreases in the number of qualifications gained. Qualifications gained at NI HEIs decreased by 0.4% from 16,010 to 15,940. In comparison, qualifications gained at Welsh HEIs decreased by 2.0% (41,400 to 40,555), while those at Scottish HEIs decreased by 0.5% (71,175 to 70,830), and English HEIs experienced a decrease of 0.2% (616,420 to 615,405) (Table 12a).

Figure 11 below illustrates the percentage change in qualifications gained for each country and for each level of qualification between 2014/15 and 2015/16. Wales was the only UK country to experience a decrease in ‘first degree’ qualifications gained, falling by 1.1% (21,800 to 21,560), whereas qualifications gained in Scotland increased by 2.6% (36,210 to 37,140), in NI by 2.0% (9,285 to 9,475), and in England by 1.0% (328,285 to 331,650) over the same period (Table 12b).

All UK countries experienced a decrease in ‘other undergraduate’ qualifications gained between 2014/15 and 2015/16 (England 9.6%, Wales 1.9%, Scotland 0.7%, and NI 0.1%) (Table 12b).

Between 2014/15 and 2015/16, England was the only UK country to experience an increase in ‘postgraduate’ qualifications gained, by 1.2% (216,195 to 218,715); the other UK countries experienced decreases (NI 5.4%, Scotland 4.5% and Wales 3.6%) (Table 12b).

Figure 11 : Percentage change in qualifications gained at UK HEIs by level of qualification and location of institution - 2014/15 to 2015/16



Qualifications gained through full-time study increased by 1.5% (488,300 to 495,775) in England and 0.2% (11,660 to 11,675) in NI between 2014/15 and 2015/16, whereas in Wales they decreased by 1.5% (33,595 to 33,100) and in Scotland they decreased by 0.4% (59,840 to 59,595) (Table 12a).

The number of qualifications gained through part-time study decreased in all UK countries (England 6.6%, Wales 4.5%, NI 2.0%, and Scotland 0.9%) between 2014/15 and 2015/16 (Table 12a).

NOTES

1. The United Kingdom Statistics Authority (the Authority) has designated these statistics as National Statistics, in accordance with the Statistics and Registration Service Act 2007 and signifying compliance with the Code of Practice for Official Statistics. Designation can be broadly interpreted to mean that the statistics: meet identified user needs; are well explained and readily accessible; are produced according to sound methods, and are managed impartially and objectively in the public interest. Once statistics have been designated as National Statistics it is a statutory requirement that the Code of Practice shall continue to be observed.
2. The data presented in this bulletin are based on the 2015/16 Higher Education Statistics Agency (HESA) student record. HESA is the official agency for the collection of information on publicly funded UK Higher Education Institutions (HEIs) in the UK. It was set up in 1993 following the White Paper 'Higher Education: a new framework', which called for more coherence in HE statistics. The HESA data presented in this bulletin relate to students at UK HEIs and, therefore, do not include HE qualifications obtained from FE colleges in NI or GB, or from institutions in the Republic of Ireland.
3. HESA releases separate publications providing information on HE Student Enrolments and Qualifications obtained at HEIs for the whole of the UK. A notable difference between the HESA publications and those released by the Department for the Economy (DfE) is that from 2015/16 HESA uses revised data returns for the time series figures, whereas DfE does not. Consequently, historical figures for the number of enrolments and qualifications at UK HEIs published by DfE may differ from those in HESA's publications. Further information on this can be found in the notes of HESA's Statistical First Release (SFR) 2015/16: <https://www.hesa.ac.uk/news/12-01-2017/sfr242-student-enrolments-and-qualifications>
4. Change to HESA Methodology – From 2013/14, HESA changed the method of allocating Open University (OU) students. Previously all OU enrolments and qualifications were counted as being within England, where the OU has its administrative centre. HESA decided from their 2013/14 release onwards that enrolments and qualifications registered at one of the OU's national centres in Wales, Scotland and Northern Ireland (NI) would contribute to the totals of those countries, where statistics are shown by country of provider.

A full public consultation of NI users of Higher Education Statistics was undertaken by DfE (formerly DEL) in 2015 on this change to the method for allocating OU students, which showed full support. This new allocation method for OU was adopted for all NI HE publications going forward from 2014/15.

5. Change to NI government departments – The number of Northern Ireland government departments has been reduced from twelve to nine. The functions and services delivered by the twelve former departments have been restructured and transferred to the relevant new departments.

The nine new departments are:

- Agriculture, Environment and Rural Affairs
- Infrastructure
- Economy
- Education
- Finance
- Health
- Justice
- The Executive Office
- Communities

More information can be found at:

<https://www.nidirect.gov.uk/articles/changes-government-departments>

6. Further statistics on the Northern Ireland HE sector, including enrolments, graduate destinations and various HE fact sheets can be downloaded from the Department's website: <https://www.economy-ni.gov.uk/topics/statistics-and-economic-research/higher-education-statistics>
7. Guidance on the production of HE statistics - Information on methods for collecting and analysing HE data, the quality of HE statistics, and links to the quality guidance used in managing the production of higher education statistics can be accessed on our statistics guidance page - <https://www.economy-ni.gov.uk/topics/statistics-and-economic-research/higher-education-statistics>
8. Following validation, the number of qualifications at NI HEIs in 2006/07 has been revised since the 2014/15 publication, from 15,180 to 15,185.
9. In 2008/09, an institution in NI mis-coded 535 'other undergraduate' qualifiers as not having gained HE qualifications, when in fact they had gained HE qualifications. The error has been corrected for the data used in this bulletin; however, care must be taken when comparing 2008/09 data with data supplied by HESA. This error was not identified until after the HESA reporting deadline and, therefore, has not been corrected for HESA publications.
10. Figures for 2015/16 reported in this bulletin are counts of student enrolments associated with the award of HE qualifications during the period 1 August 2015 to 31 July 2016 inclusive.
11. Uses made of HE statistics - This bulletin is disseminated direct to approximately 100 users. In addition, it is published on the Department's website and can be accessed through a link on the UK National Statistics GOV.UK publication hub (<https://www.gov.uk/government/statistics>) using a filter of 'higher education' and 'Department for the Economy' as the department. Users include policy colleagues in DfE, academics, researchers, members of the public, the NI Assembly, other government departments and other interested parties and individuals.

The bulletin and further analysis of the data provide an evidence base that is used in a number of DfE policies, strategies and reviews. Some of the most recent examples are: -

- DfE's Higher Education Strategy
- DfE's Widening Participation Strategy

Further details on these strategies are available from the DfE website: <https://www.economy-ni.gov.uk/articles/higher-education-strategies-northern-ireland>

In addition, HE data are used within other NI departments and their agencies. Some of the most recent examples are: -

- DoF- as a key indicator in the Education Domain of the Northern Ireland Multiple Deprivation Measure (NI MDM).
- DE – teacher demand model
- Invest NI – to quantify the supply of graduates for potential inward investment to NI

Around 200 HE statistical enquiries per year are received by the Department from various sources. These include requests for further breakdowns of enrolments, qualifications and destinations data.

In addition, approximately 20 assembly questions (either written or oral), relating to HE data, are received by the Department each year.

12. Government Targets

Data from this bulletin are used in the measurement of the following key commitment as set in the Northern Ireland Executive's Programme for Government 2011-15:

<http://www.northernireland.gov.uk/pfg-2011-2015-final-report.pdf>

“Upskill the working age population by delivering over 200,000 qualifications”.

13. Rounding Strategy – DfE conforms to the HESA rounding strategy. Due to the provisions of the Data Protection Act (1998) and the Human Rights Act (1998), HESA (and therefore DfE) implements a strategy in published and released tabulations designed to prevent the disclosure of personal information about any individual. This strategy involves rounding all numbers to the nearest 5, and suppressing percentages and averages based on small populations.

The HESA rounding strategy changed for the 2013/14 release onwards. Percentages are now suppressed if based on a population

DEFINITIONS

14. Higher Education

HE students for the purpose of HESA's data collection are those students on courses for which the level of instruction is above that of level 3 of the Qualifications and Curriculum Authority (QCA) National Qualifications Framework (NQF) (for example, courses at the level of Certificate of HE and above).

15. Level of qualification gained.

- (i) Postgraduate programmes of study are those leading to higher degrees, diplomas and certificates (including Postgraduate Certificate of Education (PGCE) and professional qualifications) and usually require that entrants are already qualified to degree level (that is, already qualified at level 6 of the QCA National Qualifications Framework).
- (ii) Higher degrees include doctorates, masters degrees and higher bachelors degrees.
- (iii) Other postgraduate includes postgraduate diplomas, certificates and professional qualifications and PGCE.
- (iv) First degree includes: first degrees with or without eligibility to register to practice with a health or social care or veterinary statutory regulatory body; first degrees with Qualified Teacher Status (QTS)/registration with a General Teaching Council (GTC); enhanced first degrees; first degrees obtained concurrently with a diploma; and intercalated first degrees.
- (v) Other undergraduate includes qualification aims equivalent to and below first degree level, such as: Professional Graduate Certificate in Education (PGCE); foundation degrees; diplomas in HE with eligibility to register to practice with a Health or Social Care or veterinary statutory regulatory body; Higher National Diploma (HND); Higher National Certificate (HNC); Diploma of Higher Education (DipHE); Certificate of Higher Education (CertHE); foundation courses at HE level; NVQ/SVQ levels 4 and 5; post-degree diplomas and certificates at undergraduate level; professional qualifications at undergraduate level; other undergraduate diplomas and certificates, including post registration health and social care courses; other formal HE qualifications of less than degree standard; institutional undergraduate credit; and no formal undergraduate qualifications.

16. Mode of study - qualifications gained

- (i) Full-time students are those whose study was recorded as full-time (as described above), and also includes awards from dormant and writing-up status where the student's mode of study was previously full-time.
- (ii) Part-time students are those whose study was recorded as part-time (as described above), and also includes awards from dormant and writing-up status where the student's mode of study was previously part-time, and awards given to those on sabbatical.

17. Classification of first degrees

The classification of a first degree indicates the qualification class that the student obtained. Certain qualifications obtained at first degree level are not subject to classification of the award, notably medical and general degrees. These, together with ordinary degrees and aegrotat qualifications, have been included within the 'unclassified' category. Third class honours, fourth class honours and the pass category have been aggregated as 'third class/pass'. Lower second and undivided second class honours have been aggregated as 'second class, lower division'.

From 2008/09, the percentage calculations included in this bulletin are expressed excluding unclassified first degrees. Therefore, caution must be exercised when comparing percentages from previous year's bulletins.

18. Domicile

Domicile refers to a student's permanent place of residence prior to enrolment on an HE course. Student enrolments recorded with domicile UK region unknown, Channel Islands and Isle of Man are included in the GB category for the purposes of this bulletin.

19. Gender

From 2007/08, the field 'gender' changed to be consistent with the Aligned Data Definitions adopted by the Information Standards Board for education, skills, and children's services. Students of 'indeterminate gender' are included in total figures but not in separate breakdowns.

20. Academic year

The academic year runs from 1st August to 31st July.

21. STEM - Science, Technology, Engineering and Maths Qualifications

Broad STEM includes the following subject areas: Medicine and Dentistry; Subjects allied to Medicine; Biological Sciences; Veterinary Sciences; Agriculture and related subjects; Physical Sciences; Mathematical Sciences; Computer Science; Engineering and Technology; and Architecture, Building & Planning.

Narrow STEM is a subset of Broad STEM and includes the following subject areas: Biological Sciences; Physical Sciences; Mathematical Sciences; Computer Science; Engineering and Technology.

22. The Open University (OU)

The Open University was previously defined as an English Institution (where it has its administrative centre). However, from 2014/15, where enrolments are broken down by country of institution, OU enrolments have been split between NI, England, Scotland and Wales, depending on the location of the national centre.

23. Multiple Deprivation Measure (MDM)

The analysis presented in section 1.4 utilises five groups (quintiles) of Super Output Areas (SOAs) across NI. These five groups are determined based on level of deprivation using the NI Multiple Deprivation Measure (NI MDM).

SOAs ranked 1 to 178 are the most deprived quintiles relative to all other SOAs. Those ranked 713 to 890 are the most affluent relative to all other SOAs. SOA is determined using the postcode provided on the enrolment record.

NI MDM 2010 is a weighted combination of the seven domains of deprivation. The Income and Employment Deprivation domains account for nearly 50% of the multiple deprivation measure. The Health Deprivation and Disability Domain, and Education, Skills and Training Deprivation Domain account for a further 30%, and the remainder is made up of the Proximity to Services, Living Environment and Crime and Disorder Domains.

For further details on deprivation measurement in NI please follow this link:

http://www.nisra.gov.uk/deprivation/nimdm_2010.htm

In 2016, there was a consultation proposing changes to the methodology of MDM measurement. Once the findings of this are analysed, a new version, MDM2017, may be introduced for use in NI.

Media enquiries should be made to the Department's Press Office in Netherleigh, Massey Avenue, Belfast, BT4 2JP, Tel: (028) 9052 9604, Email: pressoffice@economy-ni.gov.uk

LIST OF TABLES

Northern Ireland domiciled students gaining Higher Education Qualifications at UK Higher Education institutions

[Table 1](#): Northern Ireland domiciled students gaining qualifications at UK Higher Education Institutions by mode of study, level of qualification and location of institution - 2006/07 to 2015/16.....Page 40

[Table 1a](#): Northern Ireland domiciled students gaining qualifications at UK HEIs by mode of study and location of institution - 2006/07 to 2015/16.....Page 41

[Table 1b](#): Percentage change in qualifications gained by NI Domiciled students at UK HEIs by mode of study and location of institution between 2006/07 and 2015/16.....Page 41

[Table 1c](#): Percentage change in qualifications gained by NI Domiciled students at UK HEIs by mode of study and location of institution between 2014/15 and 2015/16.....Page 41

[Table 1d](#): NI Domiciled students gaining qualifications at UK HEIs by level of qualification and mode of study - 2006/07 to 2015/16.....Page 42

[Table 1e](#): Percentage change in qualifications gained by NI Domiciled students at UK HEIs by level of qualification and mode of study between 2006/07 and 2015/16.....Page 42

[Table 1f](#): Percentage change in qualifications gained by NI Domiciled students at UK HEIs by level of qualification and mode of study between 2014/15 and 2015/16.....Page 42

[Table 2](#): Northern Ireland domiciled students gaining qualifications at UK Higher Education Institutions by qualifications gained, location of study, mode of study and gender - 2015/16.....Page 43

[Table 2a](#): Northern Ireland domiciled students gaining qualifications at UK HEIs by level of qualification, location of institution and mode of Study - 2015/16.....Page 44

[Table 2b](#): Northern Ireland domiciled students gaining qualifications at UK HEIs by mode of study, level of qualification and location of institution - 2015/16.....Page 44

[Table 2c](#): Northern Ireland domiciled students gaining qualifications at UK HEIs by location of institution and level of qualification - 2015/16.....Page 44

[Table 2d](#): Northern Ireland domiciled students gaining qualifications at UK HEIs by level of qualification and gender - 2015/16.....Page 45

Table 2e : Northern Ireland domiciled students gaining qualifications at UK HEIs by gender and level of qualification - 2015/16.....	Page 45
Table 2f : Northern Ireland domiciled students gaining qualifications at UK HEIs by mode of study, level of qualification and gender - 2015/16.....	Page 45
Table 3 : Northern Ireland domiciled students gaining qualifications at UK Higher Education Institutions by qualifications gained, MDM quintile, mode of study and gender - 2015/16.....	Page 46
Table 3a : Northern Ireland domiciled students gaining qualifications at UK Higher Education Institutions by mode of study and MDM quintile - 2015/16 (with %)......	Page 47
Table 4 : Northern Ireland domiciled students gaining qualifications at UK Higher Education Institutions by qualifications gained, subject area and gender - 2015/16.....	Page 48
Table 4a : Northern Ireland domiciled students gaining qualifications at UK HEIs by qualifications gained and subject area - 2015/16.....	Page 49
Table 4b : Proportion of Northern Ireland domiciled students gaining qualifications at UK HEIs in Broad and Narrow STEM subjects by level of qualification - 2015/16.....	Page 49
Table 4c : Northern Ireland domiciled students gaining qualifications at UK HEIs by qualifications gained and gender - 2015/16.....	Page 49
Table 4d : Proportion of Northern Ireland domiciled students gaining qualifications at UK HEIs in Broad and Narrow STEM subjects by gender - 2015/16.....	Page 49
Table 5 : Northern Ireland domiciled students gaining first degrees at UK Higher Education Institutions by subject area, degree classification and gender - 2015/16.....	Page 50
Table 5a : Northern Ireland domiciled students gaining first degrees at UK HEIs by degree classification and gender - 2015/16.....	Page 51
Table 5b : Proportion of Northern Ireland domiciled students gaining first degrees at UK HEIs by degree classification and gender - 2015/16.....	Page 51

Students gaining Higher Education Qualifications at Northern Ireland Higher Education Institutions

[Table 6](#): Students gaining qualifications at Northern Ireland HEIs by level of qualification, mode of study and country of domicile - 2006/07 to 2015/16.....Page 52

[Table 6a](#): Students gaining qualifications at NI HEIs by mode of study and country of domicile - 2006/07 to 2015/16.....Page 53

[Table 6b](#): Percentage change in qualifications gained by students at NI HEIs by mode of study and country of domicile between 2006/07 and 2015/16....Page 53

[Table 6c](#): Percentage change in qualifications gained by students at NI HEIs by mode of study and country of domicile between 2014/15 and 2015/16....Page 53

[Table 6d](#): Students gaining qualifications at NI HEIs by level of qualification, mode of study - 2006/07 to 2015/16.....Page 54

[Table 6e](#): Percentage change in qualifications gained by students at NI HEIs by level of qualification and mode of study between 2006/07 and 2015/16..Page 54

[Table 6f](#): Percentage change in qualifications gained by students at NI HEIs by level of qualification and mode of study between 2014/15 and 2015/16..Page 54

[Table 7](#): Students gaining qualifications at NI Higher Education Institutions by qualifications gained, country of domicile, mode of study and gender - 2015/16...Page 55

[Table 7a](#): Students gaining qualifications at NI HEIs by level of qualification, country of domicile and mode of Study - 2015/16.....Page 56

[Table 7b](#): Students gaining qualifications at NI HEIs by mode of study, level of qualification and country of domicile - 2015/16.....Page 56

[Table 7c](#): Students gaining qualifications at NI HEIs by country of domicile and level of qualification - 2015/16.....Page 56

[Table 7d](#): Students gaining qualifications at NI HEIs by level of qualification and gender - 2015/16.....Page 57

[Table 7e](#): Students gaining qualifications at NI HEIs by gender and level of qualification - 2015/16.....Page 57

[Table 7f](#): Students gaining qualifications at NI HEIs by mode of study, level of qualification and gender - 2015/16.....Page 57

[Table 8](#): Students gaining qualifications at NI Higher Education Institutions by qualifications gained, subject area and gender - 2015/16.....Page 58

[Table 8a](#): Students gaining qualifications at NI HEIs by qualifications gained and subject area - 2015/16.....Page 59

Table 8b : Proportion of students gaining qualifications at NI HEIs in Broad and Narrow STEM subjects by level of qualification - 2015/16.....	Page 59
Table 8c : Students gaining qualifications at NI HEIs by qualifications gained and gender - 2015/16.....	Page 59
Table 8d : Proportion of students gaining qualifications at NI HEIs in Broad and Narrow STEM subjects by gender - 2015/16.....	Page 59
Table 9 : Students gaining first degrees at NI Higher Education Institutions by subject area, degree classification and gender - 2015/16.....	Page 60
Table 9a : Students gaining first degrees at NI Higher Education Institutions by degree classification and gender - 2015/16.....	Page 61
Table 9b : Proportion of students gaining first degrees at NI Higher Education Institutions by degree classification and gender - 2015/16.....	Page 61
Table 10 : Students gaining qualifications at NI Higher Education Institutions by qualification gained, level of study and institution - 2011/12 to 2015/16.....	Page 62
Table 10a : Students gaining qualifications at NI HEIs by mode of study and Institution - 2006/07 and 2015/16.....	Page 63
Table 10b : Students gaining qualifications at NI HEIs by mode of study and Institution - 2014/15 and 2015/16.....	Page 63
Table 10c : Students gaining qualifications at NI HEIs by level of qualification and Institution - 2014/15 and 2015/16.....	Page 63
Table 11 : Students gaining qualifications at NI Higher Education Institutions by country of domicile, level of qualification, mode of qualification and institution - 2015/16.....	Page 64
Table 11a : Students gaining qualifications at NI HEIs by country of domicile and institution - 2015/16.....	Page 65
Table 11b : Country of domicile breakdown of students gaining qualifications at NI HEIs by mode of study and institution - 2015/16.....	Page 65
Table 12 : Students gaining qualifications at UK HEIs by level of study, mode of study and country of Institution - 2011/12 to 2015/16.....	Page 64
Table 12a : Students gaining qualifications at UK HEIs by mode of study and location of institution - 2014/15 and 2015/16.....	Page 65
Table 12b : Students gaining qualifications at UK HEIs by level of qualification and location of institution - 2014/15 and 2015/16.....	Page 65

ANNEX A: TABLES

Table 1: Northern Ireland domiciled students gaining qualifications at UK Higher Education Institutions by mode of study, level of qualification and location of institution - 2006/07 to 2015/16

Mode and Year	Level of qualification																NI HEIs (incl. NI OU)		
	First degree				Other undergraduate				Postgraduate				Total						
	Location of Institution				Location of Institution				Location of Institution				Location of Institution						
	NI	GB	OU ⁽¹⁾	Total	NI	GB	OU ⁽¹⁾	Total	NI	GB	OU ⁽¹⁾	Total	NI	GB	OU ⁽¹⁾	Total			
Full-time																			
2006/07	6,665	2,645	0	9,310	565	295	0	860	1,165	900	0	2,065	8,395	3,845	0	12,235		8,395	
2007/08	6,780	2,875	0	9,655	435	340	0	770	1,190	790	0	1,980	8,400	4,005	0	12,405		8,400	
2008/09	6,810	2,985	0	9,795	325	340	0	665	1,345	720	0	2,065	8,480	4,045	0	12,525		8,480	
2009/10	6,755	3,035	0	9,790	315	380	0	690	1,245	790	0	2,035	8,310	4,205	0	12,515		8,310	
2010/11	6,740	3,065	0	9,805	155	405	0	560	1,605	855	0	2,460	8,500	4,320	0	12,820		8,500	
2011/12	7,535	3,160	0	10,700	250	390	0	640	1,605	865	0	2,470	9,395	4,415	0	13,810		9,395	
2012/13	7,475	3,345	0	10,820	305	450	0	755	1,595	805	0	2,400	9,375	4,600	0	13,975		9,375	
2013/14	7,235	3,655	0	10,885	335	355	0	690	1,540	775	0	2,315	9,110	4,785	0	13,895		9,110	
2014/15	7,320	3,425	0	10,745	375	345	0	725	1,605	805	0	2,410	9,300	4,580	0	13,880		9,300	
2015/16	7,730	3,275	0	11,005	400	310	0	710	1,525	865	0	2,390	9,655	4,450	0	14,105		9,655	
Part-time																			
2006/07	710	105	200	1,015	1,850	260	415	2,525	1,445	470	130	2,045	4,005	835	750	5,585		4,755	
2007/08	735	115	210	1,060	2,150	245	380	2,780	1,340	300	125	1,765	4,225	665	715	5,605		4,940	
2008/09	810	120	200	1,130	1,500	240	355	2,100	1,310	305	70	1,685	3,620	665	625	4,915		4,245	
2009/10	870	130	180	1,180	1,485	195	425	2,105	1,570	300	75	1,940	3,925	625	675	5,225		4,600	
2010/11	680	120	205	1,005	1,470	220	430	2,120	1,400	285	70	1,760	3,550	630	705	4,885		4,255	
2011/12	650	115	195	960	1,305	205	485	1,995	1,565	340	80	1,985	3,515	660	760	4,940		4,275	
2012/13	670	65	210	945	1,205	240	415	1,860	1,565	355	55	1,975	3,440	660	680	4,780		4,120	
2013/14	615	65	240	925	890	130	270	1,290	1,610	355	75	2,040	3,115	555	590	4,255		3,700	
2014/15	580	90	300	970	915	135	145	1,195	1,640	330	50	2,020	3,130	555	495	4,185		3,625	
2015/16	540	75	255	870	955	90	120	1,165	1,605	370	45	2,015	3,100	535	415	4,050		3,520	
Total																			
2006/07	7,375	2,750	200	10,330	2,415	555	415	3,390	2,610	1,370	130	4,110	12,400	4,675	750	17,825		13,150	
2007/08	7,515	2,990	210	10,715	2,585	585	380	3,550	2,525	1,095	125	3,745	12,625	4,670	715	18,010		13,340	
2008/09	7,620	3,110	200	10,925	1,830	580	355	2,765	2,655	1,025	70	3,745	12,100	4,710	625	17,440		12,725	
2009/10	7,620	3,165	180	10,970	1,800	575	425	2,795	2,810	1,090	75	3,975	12,235	4,830	675	17,740		12,910	
2010/11	7,420	3,185	205	10,810	1,625	625	430	2,675	3,010	1,140	70	4,220	12,050	4,950	705	17,710		12,760	
2011/12	8,185	3,280	195	11,660	1,555	595	485	2,635	3,170	1,205	80	4,455	12,910	5,080	760	18,750		13,670	
2012/13	8,145	3,405	210	11,765	1,510	690	415	2,610	3,160	1,160	55	4,375	12,815	5,255	680	18,750		13,495	
2013/14	7,850	3,720	240	11,810	1,220	490	270	1,980	3,150	1,130	75	4,360	12,220	5,340	590	18,150		12,810	
2014/15	7,900	3,515	300	11,715	1,290	485	145	1,920	3,245	1,135	50	4,430	12,435	5,135	495	18,065		12,930	
2015/16	8,270	3,350	255	11,875	1,355	400	120	1,875	3,130	1,235	45	4,410	12,755	4,985	420	18,160		13,175	

Source : HESA

Notes

⁽¹⁾ Open University. May include a few NI students who are registered with the OU in GB rather than NI.

To prevent the identification of individuals, figures in the attached table are rounded to the nearest 5, with 0, 1, 2 rounded to 0. Due to rounding, the sum of numbers in each row or column may not match the total shown.

Table 1a: Northern Ireland domiciled students gaining qualifications at UK HEIs by mode of study and location of institution - 2006/07 to 2015/16

Mode and Year	Location of Institution							NI HEIs (inc. NI OU)	NI HEIs (inc. NI OU) (%)
	NI	NI %	GB	GB %	OU ⁽¹⁾	OU %	Total		
Full-time									
2006/07	8,395	68.6%	3,845	31.4%	0	0.0%	12,235	8,395	68.6%
2007/08	8,400	67.7%	4,005	32.3%	0	0.0%	12,405	8,400	67.7%
2008/09	8,480	67.7%	4,045	32.3%	0	0.0%	12,525	8,480	67.7%
2009/10	8,310	66.4%	4,205	33.6%	0	0.0%	12,515	8,310	66.4%
2010/11	8,500	66.3%	4,320	33.7%	0	0.0%	12,820	8,500	66.3%
2011/12	9,395	68.0%	4,415	32.0%	0	0.0%	13,810	9,395	68.0%
2012/13	9,375	67.1%	4,600	32.9%	0	0.0%	13,975	9,375	67.1%
2013/14	9,110	65.6%	4,785	34.4%	0	0.0%	13,895	9,110	65.6%
2014/15	9,300	67.0%	4,580	33.0%	0	0.0%	13,880	9,300	67.0%
2015/16	9,655	68.4%	4,450	31.5%	0	0.0%	14,105	9,655	68.4%
Part-time									
2006/07	4,005	71.7%	835	14.9%	750	13.4%	5,585	4,755	85.1%
2007/08	4,225	75.4%	665	11.8%	715	12.8%	5,605	4,940	88.1%
2008/09	3,620	73.7%	665	13.6%	625	12.8%	4,915	4,245	86.4%
2009/10	3,925	75.1%	625	12.0%	675	13.0%	5,225	4,600	88.0%
2010/11	3,550	72.7%	630	12.9%	705	14.5%	4,885	4,255	87.1%
2011/12	3,515	71.2%	660	13.4%	760	15.4%	4,940	4,275	86.6%
2012/13	3,440	72.0%	660	13.8%	680	14.2%	4,780	4,120	86.2%
2013/14	3,115	73.1%	555	13.0%	590	13.8%	4,255	3,700	87.0%
2014/15	3,130	74.8%	555	13.3%	495	11.9%	4,185	3,625	86.7%
2015/16	3,100	76.5%	535	13.2%	415	10.3%	4,050	3,520	86.8%
Total									
2006/07	12,400	69.6%	4,675	26.2%	750	4.2%	17,825	13,150	73.8%
2007/08	12,625	70.1%	4,670	25.9%	715	4.0%	18,010	13,340	74.1%
2008/09	12,100	69.4%	4,710	27.0%	625	3.6%	17,440	12,725	73.0%
2009/10	12,235	69.0%	4,830	27.2%	675	3.8%	17,740	12,910	72.8%
2010/11	12,050	68.1%	4,950	28.0%	705	4.0%	17,710	12,760	72.0%
2011/12	12,910	68.9%	5,080	27.1%	760	4.1%	18,750	13,670	72.9%
2012/13	12,815	68.3%	5,255	28.0%	680	3.6%	18,750	13,495	72.0%
2013/14	12,220	67.3%	5,340	29.4%	590	3.2%	18,150	12,810	70.6%
2014/15	12,435	68.8%	5,135	28.4%	495	2.7%	18,065	12,930	71.6%
2015/16	12,755	70.3%	4,985	27.4%	420	2.3%	18,160	13,175	72.5%

Source : HESA

Table 1b: Percentage change in qualifications gained by NI Domiciled students at UK HEIs by mode of study and location of institution between 2006/07 and 2015/16

Mode	Location of Institution			
	NI	GB	OU ⁽¹⁾	Total
Full-time	15.0%	15.8%	-	15.3%
Part-time	-22.6%	-35.9%	-44.4%	-27.5%
Total	2.9%	6.6%	-44.3%	1.9%

Source : HESA

Table 1c: Percentage change in qualifications gained by NI Domiciled students at UK HEIs by mode of study and location of institution between 2014/15 and 2015/16

Mode	Location of Institution			
	NI	GB	OU ⁽¹⁾	Total
Full-time	3.8%	-2.8%	-	1.6%
Part-time	-1.0%	-4.1%	-15.9%	-3.2%
Total	2.6%	-3.0%	-15.7%	0.5%

Notes

⁽¹⁾ Open University. May include a few NI students who are registered with the OU in GB rather than NI.

To prevent the identification of individuals, figures in the attached table are rounded to the nearest 5, with 0, 1, 2 rounded to 0. Due to rounding, the sum of numbers in each row or column may not match the total shown.

Table 1d: NI Domiciled students gaining qualifications at UK HEIs by level of qualification and mode of study - 2006/07 to 2015/16

Mode and Year	Level of qualification						Total
	First Degree	First Degree %	Other Undergraduate	Other Undergraduate %	Postgraduate	Postgraduate %	
Full-time							
2006/07	9,310	76.1%	860	7.0%	2,065	16.9%	12,235
2007/08	9,655	77.8%	770	6.2%	1,980	16.0%	12,405
2008/09	9,795	78.2%	665	5.3%	2,065	16.5%	12,525
2009/10	9,790	78.2%	690	5.5%	2,035	16.3%	12,515
2010/11	9,805	76.5%	560	4.4%	2,460	19.2%	12,820
2011/12	10,700	77.5%	640	4.6%	2,470	17.9%	13,810
2012/13	10,820	77.4%	755	5.4%	2,400	17.2%	13,975
2013/14	10,885	78.4%	690	5.0%	2,315	16.7%	13,895
2014/15	10,745	77.4%	725	5.2%	2,410	17.4%	13,880
2015/16	11,005	78.0%	710	5.0%	2,390	16.9%	14,105
Part-time							
2006/07	1,015	18.2%	2,525	45.2%	2,045	36.6%	5,585
2007/08	1,060	18.9%	2,780	49.6%	1,765	31.5%	5,605
2008/09	1,130	23.0%	2,100	42.7%	1,685	34.3%	4,915
2009/10	1,180	22.6%	2,105	40.3%	1,940	37.2%	5,225
2010/11	1,005	20.6%	2,120	43.4%	1,760	36.0%	4,885
2011/12	960	19.4%	1,995	40.4%	1,985	40.1%	4,940
2012/13	945	19.8%	1,860	38.9%	1,975	41.3%	4,780
2013/14	925	21.7%	1,290	30.3%	2,040	48.0%	4,255
2014/15	970	23.2%	1,195	28.6%	2,020	48.2%	4,185
2015/16	870	21.4%	1,165	28.8%	2,015	49.8%	4,050
Total							
2006/07	10,330	57.9%	3,390	19.0%	4,110	23.0%	17,825
2007/08	10,715	59.5%	3,550	19.7%	3,745	20.8%	18,010
2008/09	10,925	62.7%	2,765	15.9%	3,745	21.5%	17,440
2009/10	10,970	61.8%	2,795	15.8%	3,975	22.4%	17,740
2010/11	10,810	61.1%	2,675	15.1%	4,220	23.8%	17,710
2011/12	11,660	62.2%	2,635	14.1%	4,455	23.8%	18,750
2012/13	11,765	62.7%	2,610	13.9%	4,375	23.3%	18,750
2013/14	11,810	65.1%	1,980	10.9%	4,360	24.0%	18,150
2014/15	11,715	64.9%	1,920	10.6%	4,430	24.5%	18,065
2015/16	11,875	65.4%	1,875	10.3%	4,410	24.3%	18,160

Source : HESA

Table 1e: Percentage change in qualifications gained by NI Domiciled students at UK HEIs by level of qualification and mode of study between 2006/07 and 2015/16

Mode	Level of qualification				Total
	First Degree	Other Undergraduate	Postgraduate		
Full-time	18.2%	-17.6%	15.8%		15.3%
Part-time	-14.6%	-53.8%	-1.3%		-27.5%
Total	15.0%	-44.6%	7.3%		1.9%

Source : HESA

Table 1f: Percentage change in qualifications gained by NI Domiciled students at UK HEIs by level of qualification and mode of study between 2014/15 and 2015/16

Mode	Level of qualification				Total
	First Degree	Other Undergraduate	Postgraduate		
Full-time	2.4%	-1.9%	-0.8%		1.6%
Part-time	-10.4%	-2.5%	0.0%		-3.2%
Total	1.4%	-2.3%	-0.5%		0.5%

Source : HESA

To prevent the identification of individuals, figures in the attached table are rounded to the nearest 5, with 0, 1, 2 rounded to 0. Due to rounding, the sum of numbers in each row or column may not match the total shown.

Table 2: Northern Ireland domiciled students gaining qualifications at UK Higher Education Institutions by qualifications gained, location of study, mode of study and gender - 2015/16

Location of Study	Mode	Gender	Undergraduate (UG)			Postgraduate (PG)					Total
			First Degree	Other UG	All UG	Higher Degrees		Other Postgraduate		All PG	
						Doctorate	Other Higher Degrees	PGCE	Other PG		
Northern Ireland	Full-time	Male	3,270	225	3,495	75	375	75	105	630	4,125
		Female	4,460	175	4,640	115	395	190	190	895	5,535
		Total	7,730	400	8,130	190	770	270	295	1,525	9,655
	Part-time	Male	230	245	470	45	190	0	330	560	1,035
		Female	310	710	1,025	35	300	0	705	1,045	2,065
		Total	540	955	1,495	80	490	0	1,035	1,605	3,100
	Total	Male	3,495	470	3,965	115	565	75	435	1,190	5,155
		Female	4,775	890	5,660	150	695	190	895	1,940	7,600
		Total	8,270	1,355	9,625	270	1,265	270	1,330	3,130	12,755
England	Full-time	Male	975	115	1,090	25	115	105	10	260	1,345
		Female	1,365	120	1,490	20	95	305	25	445	1,935
		Total	2,340	235	2,575	45	210	410	40	705	3,280
	Part-time	Male	40	35	75	5	55	5	55	125	200
		Female	25	35	60	10	60	5	65	140	205
		Total	65	70	140	15	115	10	125	265	405
	Total	Male	1,015	150	1,165	30	170	110	70	380	1,545
		Female	1,390	155	1,550	30	155	310	95	585	2,135
		Total	2,410	305	2,715	60	330	420	160	970	3,685
Scotland	Full-time	Male	325	35	360	10	45	10	5	70	430
		Female	510	30	540	5	20	30	10	65	605
		Total	835	65	900	15	65	40	10	135	1,035
	Part-time	Male	5	5	10	0	25	0	15	40	50
		Female	5	10	15	0	20	0	25	45	60
		Total	10	15	25	0	45	0	40	85	110
	Total	Male	330	40	370	10	70	10	20	110	480
		Female	515	40	555	5	40	30	35	110	665
		Total	845	80	925	15	110	40	50	220	1,145
Wales	Full-time	Male	40	5	45	0	10	5	0	15	60
		Female	60	5	65	0	5	5	0	15	80
		Total	100	10	110	0	15	10	0	30	135
	Part-time	Male	0	0	0	5	5	0	0	10	10
		Female	0	0	0	0	5	0	5	10	10
		Total	0	0	0	5	10	0	10	20	20
	Total	Male	40	5	45	5	10	5	5	25	70
		Female	60	5	65	0	10	5	5	25	90
		Total	100	10	110	5	25	10	10	45	160
Open University ⁽¹⁾	Full-time	Male	0	0	0	0	0	0	0	0	0
		Female	0	0	0	0	0	0	0	0	0
		Total	0	0	0	0	0	0	0	0	0
	Part-time	Male	115	40	155	0	10	0	10	20	170
		Female	140	80	220	0	15	0	10	25	245
		Total	255	120	375	0	25	0	15	45	415
	Total	Male	115	40	155	0	10	0	10	20	170
		Female	140	80	220	0	15	0	10	25	245
		Total	255	120	375	0	25	0	15	45	420
All Students	Full-time	Male	4,610	375	4,985	110	545	200	120	975	5,960
		Female	6,400	335	6,730	140	520	530	230	1,415	8,150
		Total	11,005	710	11,715	250	1,065	730	350	2,390	14,105
	Part-time	Male	390	325	715	55	285	5	410	750	1,465
		Female	480	840	1,320	45	405	5	810	1,265	2,585
		Total	870	1,165	2,035	100	685	10	1,225	2,015	4,050
	Total	Male	4,995	700	5,700	165	830	200	530	1,725	7,425
		Female	6,880	1,175	8,055	185	920	535	1,040	2,685	10,735
		Total	11,875	1,875	13,750	350	1,750	735	1,570	4,410	18,160

Source : HESA

Notes

⁽¹⁾ Open University. May include a few NI students who are registered with the OU in GB rather than NI.

To prevent the identification of individuals, figures in the attached table are rounded to the nearest 5, with 0, 1, 2 rounded to 0. Due to rounding, the sum of numbers in each row or column may not match the total shown.

Table 2a: Northern Ireland domiciled students gaining qualifications at UK HEIs by level of qualification, location of institution and mode of study - 2015/16

Location of Institution	First Degree			Other Undergraduate			Postgraduate			Total			
	Full-time	Part-time	Total	Full-time	Part-time	Total	Full-time	Part-time	Total	Full-time	Part-time	Total	
NI	7,730		540	8,270	400	955	1,355	1,525	1,605	3,130	9,655	3,100	12,755
GB	3,275		75	3,350	310	90	400	865	370	1,235	4,450	535	4,985
OU ⁽¹⁾	0		255	255	0	120	120	0	45	45	0	415	420
Total	11,005		870	11,875	710	1,165	1,875	2,390	2,015	4,410	14,105	4,050	18,160

Source : HESA

Table 2b: Mode of Study breakdown of Northern Ireland domiciled students gaining qualifications at UK HEIs by level of qualification and location of institution - 2015/16

Location of Institution	First Degree			Other Undergraduate			Postgraduate			Total			
	Full-time	Part-time	Total	Full-time	Part-time	Total	Full-time	Part-time	Total	Full-time	Part-time	Total	
NI	93.5%		6.5%	8,270	29.6%	70.4%	1,355	48.7%	51.3%	3,130	75.7%	24.3%	12,755
GB	97.8%		2.2%	3,350	77.4%	22.6%	400	70.1%	29.9%	1,235	89.3%	10.7%	4,985
OU	0.0%		100.0%	255	0.0%	100.0%	120	0.0%	97.7%	45	0.0%	99.8%	420
Total	92.7%		7.3%	11,875	37.8%	62.2%	1,875	54.2%	45.8%	4,410	77.7%	22.3%	18,160

Source : HESA

Table 2c: Northern Ireland domiciled students gaining qualifications at UK HEIs by location of institution and level of qualification - 2015/16

Location of Institution	First Degree		Other Undergraduate		Postgraduate		Total	
	First Degree	First Degree %	Other Undergraduate	Other Undergraduate %	Postgraduate	Postgraduate %	Total	Total %
NI	8,270	69.6%	1,355	72.3%	3,130	71.0%	12,755	70.3%
GB	3,350	28.2%	400	21.3%	1,235	28.0%	4,985	27.4%
OU	255	2.1%	120	6.4%	45	1.0%	420	2.3%
Total	11,875		1,875		4,410		18,160	

Source : HESA

Notes

⁽¹⁾ Open University. May include a few NI students who are registered with the OU in GB rather than NI.

To prevent the identification of individuals, figures in the attached table are rounded to the nearest 5, with 0, 1, 2 rounded to 0.

Due to rounding, the sum of numbers in each row or column may not match the total shown.

Percentages based on figures rounded to zero have been suppressed.

Table 2d: Level of qualification breakdown of Northern Ireland domiciled students gaining qualifications at UK HEIs by gender - 2015/16

Gender	Level of Qualification						
	First Degree	First Degree %	Other Undergraduate	Other Undergraduate	Postgraduate	Postgraduate %	Total
Male	4,995	67.3%	700	9.5%	1,725	23.2%	7,425
Female	6,880	64.1%	1,175	10.9%	2,685	25.0%	10,735
Total	11,875	65.4%	1,875	10.3%	4,410	24.3%	18,160

Source : HESA

Table 2e: Gender breakdown of Northern Ireland domiciled students gaining qualifications at UK HEIs by level of qualification - 2015/16

Gender	Level of Qualification							
	First Degree	First Degree %	Other Undergraduate	Other Undergraduate	Postgraduate	Postgraduate %	Total	Total %
Male	4,995	42.1%	700	37.4%	1,725	39.1%	7,425	40.9%
Female	6,880	57.9%	1,175	62.6%	2,685	60.9%	10,735	59.1%
Total	11,875		1,875		4,410		18,160	

Source : HESA

Table 2f: Mode of study breakdown of Northern Ireland domiciled students gaining qualifications at UK HEIs by level of qualification and gender - 2015/16

Mode and Gender	Level of Qualification							
	First Degree	First Degree %	Other Undergraduate	Other Undergraduate	Postgraduate	Postgraduate %	Total	Total %
Male								
Full-time	4,610	92.2%	375	53.6%	975	56.5%	5,960	80.3%
Part-time	390	7.8%	325	46.4%	750	43.5%	1,465	19.7%
Total	4,995		700		1,725		7,425	
Female								
Full-time	6,400	93.0%	335	28.4%	1,415	52.8%	8,150	75.9%
Part-time	480	7.0%	840	71.6%	1,265	47.2%	2,585	24.1%
Total	6,880		1,175		2,685		10,735	
Total								
Full-time	11,005	92.7%	710	37.8%	2,390	54.2%	14,105	77.7%
Part-time	870	7.3%	1,165	62.2%	2,015	45.8%	4,050	22.3%
Total	11,875		1,875		4,410		18,160	

Source : HESA

To prevent the identification of individuals, figures in the attached table are rounded to the nearest 5, with 0, 1, 2 rounded to 0. Due to rounding, the sum of numbers in each row or column may not match the total shown.

Table 3: Northern Ireland domiciled students gaining qualifications at UK Higher Education Institutions by qualifications gained, mdm quintile, mode of study and gender - 2015/16

Mode of study	Multiple Deprivation Quintile	First degree			Other undergraduate			Postgraduate			Total		
		Male	Female	Total	Male	Female	Total	Male	Female	Total	Male	Female	Total
Full-time	Group 1 - Most Deprived	545	835	1,375	70	50	120	95	145	240	705	1,030	1,735
	Group 2	800	1,185	1,985	75	75	150	140	240	380	1,015	1,500	2,515
	Group 3	965	1,345	2,315	80	80	155	190	305	495	1,235	1,730	2,965
	Group 4	1,070	1,460	2,530	85	70	155	230	340	570	1,385	1,870	3,255
	Group 5 - Least Deprived	1,225	1,565	2,790	70	60	130	310	375	685	1,605	2,000	3,605
	Total	4,605	6,390	10,995	375	335	710	965	1,405	2,370	5,945	8,130	14,075
Part-time	Group 1 - Most Deprived	50	85	135	65	125	190	65	145	210	180	360	540
	Group 2	75	110	185	45	170	215	120	220	340	240	500	740
	Group 3	65	90	155	70	180	250	155	250	405	285	525	810
	Group 4	100	95	195	75	190	265	155	280	440	330	565	895
	Group 5 - Least Deprived	95	90	185	75	170	240	240	350	585	405	605	1,010
	Total	385	475	860	325	835	1,160	735	1,245	1,980	1,445	2,555	3,995
Total	Group 1 - Most Deprived	595	920	1,515	130	180	310	160	290	450	885	1,390	2,275
	Group 2	875	1,295	2,170	120	245	365	260	460	720	1,255	2,000	3,255
	Group 3	1,030	1,435	2,470	145	260	405	345	555	900	1,525	2,250	3,775
	Group 4	1,170	1,555	2,725	160	260	415	390	620	1,010	1,715	2,435	4,150
	Group 5 - Least Deprived	1,315	1,655	2,970	145	230	375	545	725	1,270	2,010	2,605	4,615
	Total	4,990	6,860	11,850	700	1,170	1,870	1,700	2,650	4,350	7,390	10,680	18,070

Source : HESA

To prevent the identification of individuals, figures in the attached table are rounded to the nearest 5, with 0, 1, 2 rounded to 0. Due to rounding, the sum of numbers in each row or column may not match the total shown.

Note: There were 90 cases where the postcode was unknown and therefore no MDM Quintile could be assigned.

Table 3a: Northern Ireland domiciled students gaining qualifications at UK Higher Education Institutions by mode of study and mdm quintile - 2015/16 (with %)

Mode of study	Multiple Deprivation Quintile										
	Group 1 - Most Deprived	Group 1 - Most Deprived %	Group 2	Group 2 %	Group 3	Group 3 %	Group 4	Group 4 %	Group 5 - Least Deprived	Group 5 - Least Deprived %	Total
Full-time	1,735	12.3%	2,515	17.9%	2,965	21.1%	3,255	23.1%	3,605	25.6%	14,075
Part-time	540	13.5%	740	18.6%	810	20.3%	895	22.4%	1,010	25.3%	3,995
Total	2,275	12.6%	3,255	18.0%	3,775	20.9%	4,150	23.0%	4,615	25.5%	18,070

Source : HESA

To prevent the identification of individuals, figures in the attached table are rounded to the nearest 5, with 0, 1, 2 rounded to 0. Due to rounding, the sum of numbers in each row or column may not match the total shown.

Note: There were 90 cases where the postcode was unknown and therefore no MDM Quintile could be assigned.

Table 4: Northern Ireland domiciled students gaining qualifications at UK Higher Education Institutions by qualifications gained, subject area and gender - 2015/16

Qualification	Gender	Medicine & dentistry	Subjects allied to medicine	Biological sciences	Veterinary science	Agriculture & related subjects	Physical sciences	Mathematical sciences	Computer science	Engineering & technology	Architecture, building & planning	Social studies	Law	Business & administrative studies	Mass communications and documentation	Languages	Historical and philosophical studies	Creative arts & design	Education	Combined	Total
First Degree	Male	190	325	440	10	55	215	85	610	575	240	410	180	750	125	125	220	320	90	35	4,995
	Female	290	1,500	575	20	95	175	85	190	120	90	785	320	845	165	385	210	490	510	35	6,880
	Total	480	1,825	1,015	30	155	390	165	800	690	330	1,195	500	1,595	290	510	425	810	595	75	11,875
Other Undergraduate	Male	0	45	45	0	5	25	5	95	70	10	45	5	165	15	20	20	30	80	15	700
	Female	0	515	30	0	10	10	5	30	10	5	85	5	145	15	40	15	40	185	25	1,175
	Total	0	565	75	0	15	35	10	125	80	15	130	10	310	30	60	35	75	265	40	1,875
All Undergraduate	Male	190	375	480	10	60	240	90	710	640	250	455	185	910	140	150	240	350	165	55	5,700
	Female	290	2,015	610	20	105	185	90	215	130	95	870	325	995	180	420	225	530	695	60	8,055
	Total	480	2,390	1,090	30	165	425	180	925	770	345	1,325	510	1,905	320	570	465	885	860	115	13,750
Doctorate	Male	15	5	15	0	0	40	5	5	25	0	15	5	5	0	10	5	15	5	0	165
	Female	30	10	40	0	0	40	0	0	10	0	15	0	0	0	15	0	10	10	0	185
	Total	45	15	50	0	0	85	5	5	35	5	25	5	5	0	20	10	25	15	0	350
Other Higher Degrees	Male	40	25	70	0	10	30	5	120	55	30	70	60	155	25	15	40	55	30	0	830
	Female	50	65	110	0	35	25	0	45	15	30	100	70	95	50	40	25	60	100	0	920
	Total	90	95	175	0	45	55	5	165	70	60	170	125	250	80	60	65	115	130	0	1,750
PGCE	Male	0	0	0	0	0	0	0	0	0	0	0	0	0	0	0	0	0	200	0	200
	Female	0	0	0	0	0	0	0	0	0	0	0	0	0	0	0	0	0	535	0	535
	Total	0	0	0	0	0	0	0	0	0	0	0	0	0	0	0	0	0	735	0	735
Other Postgraduate	Male	45	40	15	0	5	5	0	15	10	65	70	60	50	5	0	5	10	130	0	530
	Female	70	235	40	0	10	10	0	15	5	50	245	100	55	10	10	5	5	185	0	1,040
	Total	110	275	55	0	15	15	0	30	15	115	315	160	100	15	10	5	15	315	0	1,570
All Postgraduate	Male	95	70	100	0	15	80	10	140	90	95	150	125	205	35	25	50	80	365	0	1,725
	Female	150	310	185	0	45	75	5	60	30	80	360	170	150	60	65	30	80	830	0	2,685
	Total	245	380	285	5	60	150	10	200	120	175	510	295	355	95	90	80	155	1,195	0	4,410
Total	Male	285	445	580	15	75	315	100	845	730	345	605	310	1,115	175	175	285	430	535	55	7,425
	Female	440	2,325	790	20	150	260	90	275	160	175	1,230	500	1,145	240	485	255	610	1,525	60	10,735
	Total	725	2,770	1,370	30	230	575	190	1,125	890	520	1,835	805	2,260	415	660	545	1,040	2,055	115	18,160

Source : HESA

To prevent the identification of individuals, figures in the attached table are rounded to the nearest 5, with 0, 1, 2 rounded to 0. Due to rounding, the sum of numbers in each row or column may not match the total shown.

Table 4a: Northern Ireland domiciled students gaining qualifications at UK HEIs by qualifications gained and subject area - 2015/16

Subject Area	First degree		Other Undergraduate		Postgraduate		Total	
	Number	%	Number	%	Number	%	Number	%
Medicine & dentistry	480	4.0%	0	0.1%	245	5.6%	725	4.0%
Subjects allied to medicine	1,825	15.4%	565	30.0%	380	8.7%	2,770	15.3%
Biological sciences	1,015	8.5%	75	4.0%	285	6.4%	1,370	7.5%
Veterinary science	30	0.2%	0	0.1%	5	0.1%	30	0.2%
Agriculture & related subjects	155	1.3%	15	0.7%	60	1.4%	230	1.3%
Physical sciences	390	3.3%	35	1.9%	150	3.4%	575	3.2%
Mathematical sciences	165	1.4%	10	0.6%	10	0.3%	190	1.0%
Computer science	800	6.7%	125	6.6%	200	4.5%	1,125	6.2%
Engineering & technology	690	5.8%	80	4.2%	120	2.7%	890	4.9%
Architecture, building & planning	330	2.8%	15	0.9%	175	4.0%	520	2.9%
Social studies	1,195	10.1%	130	6.9%	510	11.6%	1,835	10.1%
Law	500	4.2%	10	0.6%	295	6.7%	805	4.4%
Business & administrative studies	1,595	13.4%	310	16.5%	355	8.1%	2,260	12.4%
Mass communications and documentation	290	2.5%	30	1.5%	95	2.2%	415	2.3%
Languages	510	4.3%	60	3.2%	90	2.0%	660	3.6%
Historical and philosophical studies	425	3.6%	35	1.9%	80	1.8%	545	3.0%
Creative arts & design	810	6.8%	75	3.9%	155	3.5%	1,040	5.7%
Education	595	5.0%	265	14.2%	1,195	27.1%	2,055	11.3%
Combined	75	0.6%	40	2.1%	0	0.0%	115	0.6%
Total (All Subjects)	11,875		1,875		4,410		18,160	

Source : HESA

Table 4b: Proportion of Northern Ireland domiciled students gaining qualifications at UK HEIs in Broad and Narrow STEM subjects by level of qualification - 2015/16

Subject Area	First degree		Other Undergraduate		Postgraduate		Total	
	Number	%	Number	%	Number	%	Number	%
Broad STEM	5,875	49.5%	920	49.1%	1,630	37.0%	8,430	46.4%
Narrow STEM	3,060	25.8%	325	17.3%	765	17.3%	4,150	22.9%
Total (All Subjects)	11,875		1,875		4,410		18,160	

Source : HESA

Table 4c: Northern Ireland domiciled students gaining qualifications at UK HEIs by qualifications gained and gender - 2015/16

Subject Area	Male		Female		Total
	Number	%	Number	%	
Medicine & dentistry	285	39.6%	440	60.4%	725
Subjects allied to medicine	445	16.1%	2,325	83.9%	2,770
Biological sciences	580	42.2%	790	57.8%	1,370
Veterinary science	15	40.6%	20	59.4%	30
Agriculture & related subjects	75	33.4%	150	66.6%	230
Physical sciences	315	55.1%	260	44.9%	575
Mathematical sciences	100	51.9%	90	48.1%	190
Computer science	845	75.3%	275	24.7%	1,125
Engineering & technology	730	82.1%	160	17.9%	890
Architecture, building & planning	345	66.6%	175	33.4%	520
Social studies	605	33.1%	1,230	66.9%	1,835
Law	310	38.4%	500	61.6%	805
Business & administrative studies	1,115	49.3%	1,145	50.7%	2,260
Mass communications and documentation	175	41.7%	240	58.3%	415
Languages	175	26.5%	485	73.5%	660
Historical and philosophical studies	285	52.9%	255	47.1%	545
Creative arts & design	430	41.3%	610	58.7%	1,040
Education	535	25.9%	1,525	74.1%	2,055
Combined	55	47.0%	60	53.0%	115
Total (All Subjects)	7,425	40.9%	10,735	59.1%	18,160

Source : HESA

Table 4d: Proportion of Northern Ireland domiciled students gaining qualifications at UK HEIs in Broad and Narrow STEM subjects by gender - 2015/16

Subject Area	Male		Female		Total
	Number	%	Number	%	
Broad STEM	3,740	50.4%	4,690	43.7%	8,430
Narrow STEM	2,570	34.6%	1,580	14.7%	4,150
Total (All Subjects)	7,425		10,735		18,160

Source : HESA

To prevent the identification of individuals, figures in the attached table are rounded to the nearest 5, with 0, 1, 2 rounded to 0. Due to rounding, the sum of numbers in each row or column may not match the total shown.

Table 5: Northern Ireland domiciled students gaining first degrees at UK Higher Education Institutions by subject area, degree classification and gender - 2015/16

Subject Area	Gender	Degree Classification					Total
		First class honours	Second class, upper division	Second class, lower division	Third class/ Pass	Unclassified/ Classification	
Medicine & dentistry	Male	10	10	0	0	170	190
	Female	5	20	0	0	265	290
	Total	15	25	0	0	435	480
Subjects allied to medicine	Male	80	155	75	10	5	325
	Female	395	710	275	35	80	1,500
	Total	475	870	350	45	85	1,825
Biological sciences	Male	75	205	130	25	5	440
	Female	110	340	120	10	0	575
	Total	185	545	245	35	5	1,015
Veterinary science	Male	0	0	0	0	10	10
	Female	0	5	0	0	10	20
	Total	0	5	0	0	20	30
Agriculture & related subjects	Male	5	35	5	0	5	55
	Female	30	55	10	5	0	95
	Total	35	90	15	5	5	155
Physical sciences	Male	55	105	40	10	0	215
	Female	40	90	40	5	0	175
	Total	95	200	80	15	0	390
Mathematical sciences	Male	20	30	20	10	5	85
	Female	25	35	15	10	0	85
	Total	45	65	40	15	5	165
Computer science	Male	165	265	160	25	0	610
	Female	45	90	45	10	0	190
	Total	205	355	200	35	0	800
Engineering & technology	Male	180	240	110	35	10	575
	Female	45	50	15	5	0	120
	Total	225	295	125	40	10	690
Architecture, building & planning	Male	45	105	70	15	5	240
	Female	20	40	15	15	0	90
	Total	60	145	90	30	5	330
Social studies	Male	65	210	115	20	0	410
	Female	110	495	165	15	0	785
	Total	175	705	275	35	5	1,195
Law	Male	20	110	40	5	0	180
	Female	40	235	40	5	0	320
	Total	60	345	85	5	5	500
Business & administrative studies	Male	145	375	200	25	5	750
	Female	200	485	145	20	0	845
	Total	345	860	340	40	5	1,595
Mass communications and documentation	Male	15	70	35	5	0	125
	Female	30	90	45	0	0	165
	Total	45	160	80	5	0	290
Languages	Male	25	65	30	5	0	125
	Female	90	215	70	5	5	385
	Total	110	280	100	10	5	510
Historical and philosophical studies	Male	35	125	55	5	0	220
	Female	35	130	40	5	0	210
	Total	65	255	95	10	0	425
Creative arts & design	Male	70	175	65	10	0	320
	Female	120	265	95	10	5	490
	Total	185	445	160	20	5	810
Education	Male	20	45	20	5	0	90
	Female	120	275	95	20	5	510
	Total	140	315	110	20	5	595
Combined	Male	5	10	5	5	15	35
	Female	5	10	5	5	10	35
	Total	10	20	10	10	25	75
All First Degrees	Male	1,030	2,340	1,175	210	240	4,995
	Female	1,455	3,635	1,230	170	390	6,880
	Total	2,485	5,975	2,405	380	630	11,875

Source : HESA

To prevent the identification of individuals, figures in the attached table are rounded to the nearest 5, with 0, 1, 2 rounded to 0. Due to rounding, the sum of numbers in each row or column may not match the total shown.

Table 5a: Northern Ireland domiciled students gaining first degrees at UK HEIs by degree classification and gender - 2015/16

Gender	Degree Classification					Total
	First class honours	Second class, upper division	Second class, lower division	Third class/ Pass	Unclassified/ Classification	
Male	1,030	2,340	1,175	210	240	4,995
Female	1,455	3,635	1,230	170	390	6,880
Total	2,485	5,975	2,405	380	630	11,875

Table 5b: Proportion of Northern Ireland domiciled students gaining first degrees at UK HEIs by degree classification and gender - 2015/16

Gender	Degree Classification				First Class or Upper second Class
	First class honours	Second class, upper division	Second class, lower division	Third class/ Pass	
Male	21.7%	49.2%	24.7%	4.4%	70.9%
Female	22.4%	56.0%	19.0%	2.7%	78.4%
Total	22.1%	53.1%	21.4%	3.4%	75.2%

Source : HESA

To prevent the identification of individuals, figures in the attached table are rounded to the nearest 5, with 0, 1, 2 rounded to 0. Due to rounding, the sum of numbers in each row or column may not match the total shown.

Table 6: Students gaining qualifications at Northern Ireland HEIs by level of qualification, mode of study and country of domicile - 2006/07 to 2015/16

Level and Year	First Degree						Other Undergraduate						Postgraduate						Total						
	Country of domicile						Country of domicile						Country of domicile						Country of domicile						
	NI	GB	Rol	Other EU	Non EU	Total	NI	GB	Rol	Other EU	Non EU	Total	NI	GB	Rol	Other EU	Non EU	Total	NI	GB	Rol	Other EU	Non EU	Total	
Full-time																									
2006/07	6,665	85	440	40	230	7,460	565	0	20	5	10	600	1,165	30	165	50	225	1,635	8,395	115	630	95	465	9,695	
2007/08	6,780	80	360	40	170	7,430	435	0	20	0	10	465	1,190	25	200	45	220	1,675	8,400	110	580	90	395	9,575	
2008/09	6,810	100	395	30	200	7,535	325	0	20	0	5	350	1,345	50	250	50	295	1,990	8,480	150	660	80	500	9,875	
2009/10	6,755	85	260	30	160	7,290	315	0	30	5	20	370	1,245	55	190	60	235	1,785	8,310	140	485	95	415	9,445	
2010/11	6,740	160	250	40	185	7,375	155	0	5	0	30	190	1,605	60	420	75	345	2,505	8,500	215	675	115	565	10,070	
2011/12	7,535	165	280	25	190	8,195	250	0	5	5	85	345	1,605	55	390	75	365	2,490	9,395	220	680	100	640	11,030	
2012/13	7,475	155	285	30	210	8,155	305	0	10	5	170	490	1,595	60	340	70	675	2,735	9,375	215	630	105	1,055	11,385	
2013/14	7,235	205	235	45	275	7,995	335	5	5	0	440	785	1,540	50	270	70	700	2,630	9,110	260	510	115	1,415	11,410	
2014/15	7,320	200	260	40	545	8,360	375	25	55	5	315	770	1,605	60	265	55	540	2,525	9,300	280	580	95	1,405	11,660	
2015/16	7,730	250	210	40	380	8,615	400	5	5	5	290	705	1,525	70	190	50	520	2,355	9,655	330	405	95	1,190	11,675	
Part-time																									
2006/07	915	0	70	0	5	995	2,265	0	125	5	5	2,405	1,575	190	235	40	50	2,090	4,755	195	435	45	60	5,485	
2007/08	940	0	70	0	5	1,020	2,550	15	155	5	10	2,730	1,450	165	260	45	55	1,975	4,940	185	485	50	75	5,725	
2008/09	1,010	5	65	0	5	1,085	1,860	80	275	0	5	2,220	1,380	180	310	30	70	1,970	4,245	265	645	35	85	5,275	
2009/10	1,045	5	65	5	5	1,125	1,910	100	240	0	45	2,290	1,645	175	385	30	120	2,355	4,600	280	685	35	170	5,770	
2010/11	885	5	50	0	5	945	1,900	60	505	0	65	2,535	1,475	190	355	45	55	2,115	4,255	260	910	45	125	5,595	
2011/12	845	15	50	0	5	910	1,790	40	575	5	205	2,620	1,645	180	390	35	60	2,305	4,275	235	1,010	40	265	5,830	
2012/13	880	5	55	0	5	950	1,615	85	790	20	25	2,540	1,620	245	250	25	40	2,180	4,120	335	1,100	45	75	5,670	
2013/14	855	10	40	0	10	920	1,160	65	85	0	5	1,315	1,685	330	205	10	35	2,270	3,700	405	330	15	55	4,500	
2014/15	880	15	25	0	0	925	1,060	75	55	0	10	1,200	1,685	295	210	15	25	2,225	3,625	385	285	15	35	4,350	
2015/16	795	15	45	0	5	860	1,075	100	85	0	5	1,270	1,650	245	210	10	25	2,135	3,520	360	340	10	35	4,265	
Total																									
2006/07	7,575	90	515	40	235	8,455	2,830	5	150	10	10	3,005	2,740	220	400	90	275	3,725	13,145	310	1,065	140	520	15,185	
2007/08	7,720	85	430	40	175	8,450	2,980	15	175	5	20	3,195	2,635	190	460	90	275	3,655	13,340	290	1,065	135	470	15,300	
2008/09	7,820	105	460	35	205	8,625	2,185	80	290	0	15	2,570	2,725	230	555	80	370	3,960	12,725	415	1,305	115	585	15,150	
2009/10	7,800	90	325	35	165	8,415	2,220	100	270	5	60	2,660	2,885	230	575	90	355	4,145	12,910	420	1,170	130	585	15,215	
2010/11	7,625	165	305	40	190	8,320	2,055	60	510	0	100	2,725	3,080	250	775	120	405	4,620	12,760	475	1,585	155	690	15,665	
2011/12	8,380	180	325	25	190	9,100	2,040	40	580	10	290	2,965	3,250	235	780	105	425	4,800	13,670	455	1,690	140	905	16,860	
2012/13	8,360	160	340	35	215	9,105	1,920	85	800	20	200	3,030	3,215	305	590	95	715	4,915	13,495	550	1,730	150	1,130	17,055	
2013/14	8,090	220	275	45	285	8,915	1,495	65	90	0	445	2,100	3,225	380	475	85	740	4,900	12,810	665	840	130	1,470	15,910	
2014/15	8,200	215	285	40	550	9,285	1,435	100	110	5	325	1,975	3,290	350	475	65	565	4,750	12,930	665	865	110	1,435	16,010	
2015/16	8,525	265	255	40	390	9,475	1,475	110	90	5	290	1,970	3,175	315	400	60	545	4,495	13,175	685	745	105	1,225	15,940	

Source : HESA

Note

Following validation, the number of qualifications at NI HEIs in 2006/07 has been revised since the 2014/15 publication, from 15,180 to 15,185.

To prevent the identification of individuals, figures in the attached table are rounded to the nearest 5, with 0, 1, 2 rounded to 0. Due to rounding, the sum of numbers in each row or column may not match the total shown.

Table 6a: Students gaining qualifications at NI HEIs by mode of study and country of domicile - 2006/07 to 2015/16

Mode and Year	Country of domicile										Non NI Domiciled	Non NI Domiciled %		
	NI	NI %	GB	GB %	Rol	Rol %	Other EU	Other EU %	Non EU	Non EU %			Total	
Full-time	2006/07	8,395	86.6%	115	1.2%	630	6.5%	95	1.0%	465	4.8%	9,695	1,305	13.4%
	2007/08	8,400	87.7%	110	1.1%	580	6.1%	90	0.9%	395	4.1%	9,575	1,175	12.3%
	2008/09	8,480	85.9%	150	1.5%	660	6.7%	80	0.8%	500	5.1%	9,875	1,395	14.1%
	2009/10	8,310	88.0%	140	1.5%	485	5.1%	95	1.0%	415	4.4%	9,445	1,135	12.0%
	2010/11	8,500	84.4%	215	2.2%	675	6.7%	115	1.1%	565	5.6%	10,070	1,570	15.6%
	2011/12	9,395	85.2%	220	2.0%	680	6.1%	100	0.9%	640	5.8%	11,030	1,635	14.8%
	2012/13	9,375	82.4%	215	1.9%	630	5.6%	105	0.9%	1,055	9.3%	11,385	2,010	17.6%
	2013/14	9,110	79.8%	260	2.3%	510	4.5%	115	1.0%	1,415	12.4%	11,410	2,305	20.2%
	2014/15	9,300	79.8%	280	2.4%	580	5.0%	95	0.8%	1,405	12.0%	11,660	2,355	20.2%
	2015/16	9,655	82.7%	330	2.8%	405	3.5%	95	0.8%	1,190	10.2%	11,675	2,020	17.3%
Part-time	2006/07	4,755	86.6%	195	3.6%	435	7.9%	45	0.8%	60	1.1%	5,485	735	13.4%
	2007/08	4,940	86.2%	185	3.2%	485	8.5%	50	0.8%	75	1.3%	5,725	790	13.8%
	2008/09	4,245	80.5%	265	5.0%	645	12.2%	35	0.7%	85	1.6%	5,275	1,030	19.5%
	2009/10	4,600	79.7%	280	4.9%	685	11.9%	35	0.6%	170	2.9%	5,770	1,170	20.3%
	2010/11	4,255	76.1%	260	4.6%	910	16.3%	45	0.8%	125	2.3%	5,595	1,340	23.9%
	2011/12	4,275	73.3%	235	4.0%	1,010	17.3%	40	0.7%	265	4.6%	5,830	1,550	26.6%
	2012/13	4,120	72.7%	335	5.9%	1,100	19.4%	45	0.8%	75	1.3%	5,670	1,550	27.3%
	2013/14	3,700	82.2%	405	9.0%	330	7.3%	15	0.3%	55	1.2%	4,500	800	17.8%
	2014/15	3,625	83.3%	385	8.9%	285	6.6%	15	0.4%	35	0.8%	4,350	725	16.7%
	2015/16	3,520	82.5%	360	8.4%	340	8.0%	10	0.2%	35	0.8%	4,265	745	17.5%
Total	2006/07	13,145	86.6%	310	2.0%	1,065	7.0%	140	0.9%	520	3.4%	15,185	2,035	13.4%
	2007/08	13,340	87.2%	290	1.9%	1,065	7.0%	135	0.9%	470	3.1%	15,300	1,960	12.8%
	2008/09	12,725	84.0%	415	2.7%	1,305	8.6%	115	0.8%	585	3.9%	15,150	2,425	16.0%
	2009/10	12,910	84.8%	420	2.8%	1,170	7.7%	130	0.9%	585	3.8%	15,215	2,305	15.2%
	2010/11	12,760	81.4%	475	3.0%	1,585	10.1%	155	1.0%	690	4.4%	15,665	2,910	18.6%
	2011/12	13,670	81.1%	455	2.7%	1,690	10.0%	140	0.8%	905	5.4%	16,860	3,185	18.9%
	2012/13	13,495	79.1%	550	3.2%	1,730	10.1%	150	0.9%	1,130	6.6%	17,055	3,560	20.9%
	2013/14	12,810	80.5%	665	4.2%	840	5.3%	130	0.8%	1,470	9.2%	15,910	3,105	19.5%
	2014/15	12,930	80.8%	665	4.2%	865	5.4%	110	0.7%	1,435	9.0%	16,010	3,080	19.2%
	2015/16	13,175	82.7%	685	4.3%	745	4.7%	105	0.7%	1,225	7.7%	15,940	2,765	17.3%

Source : HESA

Table 6b: Percentage change in qualifications gained by students at NI HEIs by mode of study and country of domicile between 2006/07 and 2015/16

Mode	Country of domicile					
	NI	GB	Rol	Other EU	Non EU	Total
Full-time	15.0%	183.6%	-35.5%	0.0%	156.8%	20.4%
Part-time	-26.0%	83.6%	-21.6%	-77.3%	-39.0%	-22.3%
Total	0.2%	120.9%	-29.8%	-24.1%	134.7%	5.0%

Source : HESA

Non NI Domicile
54.9%
1.6%
35.7%

Table 6c: Percentage change in qualifications gained by students at NI HEIs by mode of study and country of domicile between 2014/15 and 2015/16

Mode	Country of domicile					
	NI	GB	Rol	Other EU	Non EU	Total
Full-time	3.8%	17.9%	-30.2%	3.2%	-15.3%	0.2%
Part-time	-3.0%	-7.5%	18.8%	-41.2%	5.9%	-2.0%
Total	1.9%	3.2%	-14.0%	-3.6%	-14.8%	-0.4%

Source : HESA

Non NI Domicile
-14.3%
2.8%
-10.3%

Note

Following validation, the number of qualifications at NI HEIs in 2006/07 has been revised since the 2014/15 publication, from 15,180 to 15,185.

To prevent the identification of individuals, figures in the attached table are rounded to the nearest 5, with 0, 1, 2 rounded to 0. Due to rounding, the sum of numbers in each row or column may not match the total shown.

Table 6d: Students gaining qualifications at NI HEIs by level of qualification, mode of study - 2006/07 to 2015/16

Mode and Year	Level of Qualification						Total	
	First Degree	First Degree %	Other Undergraduate	Other Undergraduate %	Postgraduate	Postgraduate %		
Full-time	2006/07	7,460	76.9%	600	6.2%	1,635	16.9%	9,695
	2007/08	7,430	77.6%	465	4.9%	1,675	17.5%	9,575
	2008/09	7,535	76.3%	350	3.5%	1,990	20.1%	9,875
	2009/10	7,290	77.2%	370	3.9%	1,785	18.9%	9,445
	2010/11	7,375	73.2%	190	1.9%	2,505	24.9%	10,070
	2011/12	8,195	74.3%	345	3.1%	2,490	22.6%	11,030
	2012/13	8,155	71.7%	490	4.3%	2,735	24.0%	11,385
	2013/14	7,995	70.1%	785	6.9%	2,630	23.1%	11,410
	2014/15	8,360	71.7%	770	6.6%	2,525	21.7%	11,660
	2015/16	8,615	73.8%	705	6.0%	2,355	20.2%	11,675
Part-time	2006/07	995	18.1%	2,405	43.8%	2,090	38.1%	5,485
	2007/08	1,020	17.8%	2,730	47.7%	1,975	34.5%	5,725
	2008/09	1,085	20.6%	2,220	42.0%	1,970	37.4%	5,275
	2009/10	1,125	19.5%	2,290	39.7%	2,355	40.8%	5,770
	2010/11	945	16.9%	2,535	45.3%	2,115	37.8%	5,595
	2011/12	910	15.6%	2,620	44.9%	2,305	39.5%	5,830
	2012/13	950	16.7%	2,540	44.8%	2,180	38.5%	5,670
	2013/14	920	20.4%	1,315	29.2%	2,270	50.4%	4,500
	2014/15	925	21.3%	1,200	27.6%	2,225	51.1%	4,350
	2015/16	860	20.1%	1,270	29.7%	2,135	50.1%	4,265
Total	2006/07	8,455	55.7%	3,005	19.8%	3,725	24.5%	15,185
	2007/08	8,450	55.2%	3,195	20.9%	3,655	23.9%	15,300
	2008/09	8,625	56.9%	2,570	17.0%	3,960	26.1%	15,150
	2009/10	8,415	55.3%	2,660	17.5%	4,145	27.2%	15,215
	2010/11	8,320	53.1%	2,725	17.4%	4,620	29.5%	15,665
	2011/12	9,100	54.0%	2,965	17.6%	4,800	28.5%	16,860
	2012/13	9,105	53.4%	3,030	17.8%	4,915	28.8%	17,055
	2013/14	8,915	56.0%	2,100	13.2%	4,900	30.8%	15,910
	2014/15	9,285	58.0%	1,975	12.3%	4,750	29.7%	16,010
	2015/16	9,475	59.4%	1,970	12.4%	4,495	28.2%	15,940

Source : HESA

Table 6e: Percentage change in qualifications gained by students at NI HEIs by level of qualification and mode of study between 2006/07 and 2015/16

Mode	Level of Qualification			Total
	First Degree	Other Undergraduate	Postgraduate	
Full-time	15.5%	17.0%	44.0%	20.4%
Part-time	-13.7%	-47.3%	2.3%	-22.3%
Total	12.1%	-34.4%	20.6%	5.0%

Source : HESA

Table 6f: Percentage change in qualifications gained by students at NI HEIs by level of qualification and mode of study between 2014/15 and 2015/16

Mode	Level of Qualification			Total
	First Degree	Other Undergraduate	Postgraduate	
Full-time	3.0%	-8.9%	-6.7%	0.2%
Part-time	-7.3%	5.6%	-3.9%	-2.0%
Total	2.0%	-0.1%	-5.4%	-0.4%

Source : HESA

To prevent the identification of individuals, figures in the attached table are rounded to the nearest 5, with 0, 1, 2 rounded to 0. Due to rounding, the sum of numbers in each row or column may not match the total shown.

Table 7: Students gaining qualifications at NI Higher Education Institutions by qualifications gained, country of domicile, mode of study and gender - 2015/16

Domicile	Mode	Gender	Undergraduate (UG)			Postgraduate (PG)					Total
			First Degree	Other UG	All UG	Higher Degrees		Other Postgraduate		All PG	
						Doctorate	Other Higher Degrees	PGCE	Other PG		
Northern Ireland	Full-time	Male	3,270	225	3,495	75	375	75	105	630	4,125
		Female	4,460	175	4,640	115	395	190	190	895	5,535
		Total	7,730	400	8,130	190	770	270	295	1,525	9,655
	Part-time	Male	345	280	625	45	200	0	340	580	1,205
		Female	450	795	1,245	35	320	0	715	1,070	2,315
		Total	795	1,075	1,870	80	520	0	1,050	1,650	3,520
	Total	Male	3,610	505	4,120	115	575	75	445	1,210	5,330
		Female	4,910	970	5,885	150	715	190	905	1,965	7,845
		Total	8,525	1,475	10,000	270	1,290	270	1,350	3,175	13,175
Great Britain	Full-time	Male	110	5	110	10	25	0	5	35	145
		Female	145	5	150	5	25	0	5	35	180
		Total	250	5	260	15	50	0	5	70	330
	Part-time	Male	5	35	35	0	25	0	30	60	95
		Female	10	70	75	0	45	0	135	185	260
		Total	15	100	115	5	70	0	170	245	360
	Total	Male	110	35	150	10	50	0	35	95	245
		Female	155	70	225	10	70	0	140	220	445
		Total	265	110	375	20	120	0	175	315	685
Republic of Ireland	Full-time	Male	70	0	70	10	70	0	5	90	155
		Female	145	0	145	10	75	5	10	105	250
		Total	210	5	215	25	145	5	15	190	405
	Part-time	Male	20	20	40	10	35	0	35	80	120
		Female	25	65	90	15	70	0	45	130	220
		Total	45	85	130	25	110	0	75	210	340
	Total	Male	85	20	110	25	105	0	40	170	275
		Female	170	65	235	25	150	5	50	235	470
		Total	255	90	345	50	250	5	95	400	745
Other EU	Full-time	Male	30	0	30	10	15	0	0	25	55
		Female	10	0	15	5	20	0	0	30	40
		Total	40	5	45	15	40	0	0	50	95
	Part-time	Male	0	0	0	0	0	0	0	5	5
		Female	0	0	0	0	0	0	0	5	5
		Total	0	0	0	5	5	0	0	10	10
	Total	Male	30	5	30	10	15	0	0	30	60
		Female	10	5	15	5	25	0	0	30	45
		Total	40	5	45	15	40	0	0	60	105
Non EU	Full-time	Male	190	175	360	60	160	0	20	240	605
		Female	195	115	310	25	235	0	15	280	585
		Total	380	290	670	85	400	0	35	520	1,190
	Part-time	Male	5	0	5	5	5	0	0	15	20
		Female	5	0	5	5	5	0	5	15	20
		Total	5	5	10	10	10	0	5	25	35
	Total	Male	195	175	365	65	165	0	25	255	620
		Female	195	115	315	30	240	0	20	290	605
		Total	390	290	680	95	410	0	40	545	1,225
All Students	Full-time	Male	3,665	405	4,065	160	645	75	135	1,020	5,085
		Female	4,955	300	5,255	165	755	200	220	1,340	6,590
		Total	8,615	705	9,320	325	1,400	275	355	2,355	11,675
	Part-time	Male	370	340	705	65	265	0	405	740	1,445
		Female	490	930	1,420	55	445	0	900	1,400	2,820
		Total	860	1,270	2,125	120	710	0	1,305	2,135	4,265
	Total	Male	4,030	740	4,775	225	915	75	545	1,755	6,530
		Female	5,440	1,230	6,670	225	1,200	200	1,115	2,735	9,410
		Total	9,475	1,970	11,445	450	2,110	275	1,660	4,495	15,940

Source : HESA

To prevent the identification of individuals, figures in the attached table are rounded to the nearest 5, with 0, 1, 2 rounded to 0. Due to rounding, the sum of numbers in each row or column may not match the total shown.

Table 7a: Students gaining qualifications at NI HEIs by level of qualification, country of domicile and mode of study - 2015/16

Country of domicile	First Degree			Other Undergraduate			Postgraduate			Total			
	Full-time	Part-time	Total	Full-time	Part-time	Total	Full-time	Part-time	Total	Full-time	Part-time	Total	
NI	7,730		795	8,525	400	1,075	1,475	1,525	1,650	3,175	9,655	3,520	13,175
GB	250		15	265	5	100	110	70	245	315	330	360	685
ROI	210		45	255	5	85	90	190	210	400	405	340	745
Other EU	40		0	40	5	0	5	50	10	60	95	10	105
Non EU	380		5	390	290	5	290	520	25	545	1,190	35	1,225
Total	8,615		860	9,475	705	1,270	1,970	2,355	2,135	4,495	11,675	4,265	15,940

Source : HESA

Table 7b: Mode of Study breakdown of students gaining qualifications at NI HEIs by level of qualification and country of domicile - 2015/16

Country of domicile	First Degree			Other Undergraduate			Postgraduate			Total			
	Full-time	Part-time	Total	Full-time	Part-time	Total	Full-time	Part-time	Total	Full-time	Part-time	Total	
NI	90.7%		9.3%	8,525	27.1%	72.9%	1,475	48.1%	51.9%	3,175	73.3%	26.7%	13,175
GB	95.1%		4.9%	265	6.5%	93.5%	110	22.3%	77.7%	315	47.9%	52.1%	685
ROI	82.7%		17.3%	255	3.4%	96.6%	90	47.5%	52.5%	400	54.3%	45.7%	745
Other EU	100.0%		0.0%	40	66.7%	33.3%	5	86.7%	13.3%	60	90.7%	9.3%	105
Non EU	98.2%		1.8%	390	99.0%	1.0%	290	95.2%	4.8%	545	97.1%	2.9%	1,225
Total	90.9%		9.1%	9,475	35.7%	64.3%	1,970	52.4%	47.6%	4,495	73.3%	26.7%	15,940

Source : HESA

Table 7c: Students gaining qualifications at NI HEIs by country of domicile and level of qualification - 2015/16

Country of domicile	First Degree		Other Undergraduate		Postgraduate		Total	
	First Degree	First Degree %	Other Undergraduate	Other Undergraduate %	Postgraduate	Postgraduate %	Total	Total %
NI	8,525	90.0%	1,475	74.9%	3,175	70.6%	13,175	82.7%
GB	265	2.8%	110	5.5%	315	7.0%	685	4.3%
ROI	255	2.7%	90	4.5%	400	8.9%	745	4.7%
Other EU	40	0.4%	5	0.3%	60	1.3%	105	0.7%
Non EU	390	4.1%	290	14.8%	545	12.1%	1,225	7.7%
Total	9,475		1,970		4,495		15,940	

Source : HESA

To prevent the identification of individuals, figures in the attached table are rounded to the nearest 5, with 0, 1, 2 rounded to 0. Due to rounding, the sum of numbers in each row or column may not match the total shown.

Table 7d: Level of qualification breakdown of students gaining qualifications at NI HEIs by gender - 2015/16

Gender		Level of Qualification						
		First Degree	First Degree %	Other Undergraduate	Undergraduate %	Postgraduate	Postgraduate %	Total
Male		4,030	61.7%	740	11.3%	1,755	26.9%	6,530
Female		5,440	57.8%	1,230	13.1%	2,735	29.1%	9,410
Total		9,475	59.4%	1,970	12.4%	4,495	28.2%	15,940

Source : HESA

Table 7e: Gender breakdown of students gaining qualifications at NI HEIs by level of qualification - 2015/16

Gender		Level of Qualification						Total	Total %
		First Degree	First Degree %	Other Undergraduate	Undergraduate %	Postgraduate	Postgraduate %		
Male		4,030	42.6%	740	37.6%	1,755	39.1%	6,530	41.0%
Female		5,440	57.4%	1,230	62.4%	2,735	60.9%	9,410	59.0%
Total		9,475		1,970		4,495		15,940	

Source : HESA

Table 7f: Mode of study breakdown of students gaining qualifications at NI HEIs by level of qualification and gender - 2015/16

Mode and Gender		Level of Qualification						Total	Total %
		First Degree	First Degree %	Other Undergraduate	Undergraduate %	Postgraduate	Postgraduate %		
Male	Full-time	3,665	90.8%	405	54.4%	1,020	58.0%	5,085	77.9%
	Part-time	370	9.2%	340	45.6%	740	42.0%	1,445	22.1%
	Total	4,030		740		1,755		6,530	
Female	Full-time	4,955	91.0%	300	24.4%	1,340	48.9%	6,590	70.0%
	Part-time	490	9.0%	930	75.6%	1,400	51.1%	2,820	30.0%
	Total	5,440		1,230		2,735		9,410	
Total	Full-time	8,615	90.9%	705	35.7%	2,355	52.4%	11,675	73.3%
	Part-time	860	9.1%	1,270	64.3%	2,135	47.6%	4,265	26.7%
	Total	9,475		1,970		4,495		15,940	

Source : HESA

To prevent the identification of individuals, figures in the attached table are rounded to the nearest 5, with 0, 1, 2 rounded to 0. Due to rounding, the sum of numbers in each row or column may not match the total shown.

Table 8: Students gaining qualifications at NI Higher Education Institutions by qualifications gained, subject area and gender - 2015/16

Qualification	Gender	Medicine & dentistry	Subjects allied to medicine	Biological sciences	Agriculture & related subjects	Physical sciences	Mathematical sciences	Computer science	Engineering & technology	Architecture, building & planning	Social studies	Law	Business & administrative studies	Mass communications and documentation	Languages	Historical and philosophical studies	Creative arts & design	Education	Combined	Total
First Degree	Male	115	270	285	40	140	50	555	520	215	345	140	675	80	100	195	200	65	35	4,030
	Female	180	1,225	445	65	135	55	175	90	90	680	260	765	105	290	170	345	340	30	5,440
	Total	295	1,495	730	105	275	110	730	610	305	1,020	400	1,440	185	395	365	545	405	65	9,475
Other Undergraduate	Male	0	45	20	0	15	5	80	115	15	40	0	265	10	25	10	15	65	15	740
	Female	0	540	20	0	5	0	20	40	10	65	0	255	10	50	10	15	160	25	1,230
	Total	0	585	40	5	20	5	100	155	25	100	5	520	20	75	20	30	225	40	1,970
All Undergraduate	Male	115	320	305	45	155	55	630	635	230	380	140	940	90	130	205	215	130	55	4,775
	Female	180	1,760	465	65	140	60	195	130	100	745	260	1,020	115	340	180	360	500	55	6,670
	Total	295	2,080	770	110	295	115	830	765	330	1,125	400	1,965	205	470	385	575	630	105	11,445
Doctorate	Male	15	15	20	5	45	0	5	40	0	15	5	10	0	10	5	25	10	0	225
	Female	25	15	40	0	45	0	0	15	5	20	5	5	0	15	5	15	15	0	225
	Total	40	30	55	5	90	5	5	55	5	35	10	10	0	25	15	40	25	0	450
Other Higher Degrees	Male	30	40	70	10	25	0	120	75	35	60	55	250	20	10	35	40	35	0	915
	Female	40	110	145	35	30	0	45	25	30	100	85	235	45	45	30	50	150	0	1,200
	Total	70	150	220	50	55	0	165	100	65	160	140	490	65	55	60	90	185	0	2,110
PGCE	Male	0	0	0	0	0	0	0	0	0	0	0	0	0	0	0	0	75	0	75
	Female	0	0	0	0	0	0	0	0	0	0	0	0	0	0	0	0	200	0	200
	Total	0	0	0	0	0	0	0	0	0	0	0	0	0	0	0	0	275	0	275
Other Postgraduate	Male	35	50	15	5	5	0	15	10	65	65	50	85	10	0	5	5	125	0	545
	Female	60	335	45	10	10	0	15	5	45	230	95	70	10	5	0	5	175	0	1,115
	Total	95	385	60	15	15	0	30	15	110	295	145	155	20	5	5	10	300	0	1,660
All Postgraduate	Male	80	105	105	20	75	0	135	130	100	140	110	345	30	25	40	70	245	0	1,755
	Female	125	460	230	50	85	0	60	40	80	350	185	310	55	65	35	65	535	0	2,735
	Total	205	565	335	70	160	5	195	170	180	490	295	650	85	85	80	140	785	0	4,495
Total	Male	195	420	410	65	230	60	765	765	330	520	250	1,285	120	150	245	285	375	55	6,530
	Female	300	2,225	695	115	220	60	260	170	180	1,095	445	1,330	170	400	215	430	1,035	55	9,410
	Total	500	2,645	1,105	180	450	120	1,025	940	510	1,615	695	2,615	290	555	460	715	1,415	110	15,940

Source : HESA

To prevent the identification of individuals, figures in the attached table are rounded to the nearest 5, with 0, 1, 2 rounded to 0. Due to rounding, the sum of numbers in each row or column may not match the total shown.

Table 8a: Students gaining qualifications at NI HEIs by qualifications gained and subject area - 2015/16

Subject Area	First degree		Other Undergraduate		Postgraduate		Total	
Medicine & dentistry	295	3.1%	0	0.0%	205	4.6%	500	3.1%
Subjects allied to medicine	1,495	15.8%	585	29.8%	565	12.5%	2,645	16.6%
Biological sciences	730	7.7%	40	2.0%	335	7.5%	1,105	6.9%
Agriculture & related subjects	105	1.1%	5	0.2%	70	1.6%	180	1.1%
Physical sciences	275	2.9%	20	0.9%	160	3.5%	450	2.8%
Mathematical sciences	110	1.1%	5	0.4%	5	0.1%	120	0.7%
Computer science	730	7.7%	100	5.0%	195	4.4%	1,025	6.4%
Engineering & technology	610	6.4%	155	7.9%	170	3.8%	940	5.9%
Architecture, building & planning	305	3.2%	25	1.2%	180	4.0%	510	3.2%
Social studies	1,020	10.8%	100	5.2%	490	10.9%	1,615	10.1%
Law	400	4.2%	5	0.1%	295	6.5%	695	4.4%
Business & administrative studies	1,440	15.2%	520	26.5%	650	14.5%	2,615	16.4%
Mass communications and documentation	185	2.0%	20	1.0%	85	1.9%	290	1.8%
Languages	395	4.1%	75	3.8%	85	1.9%	555	3.5%
Historical and philosophical studies	365	3.8%	20	1.0%	80	1.7%	460	2.9%
Creative arts & design	545	5.8%	30	1.6%	140	3.1%	715	4.5%
Education	405	4.3%	225	11.3%	785	17.4%	1,415	8.9%
Combined	65	0.7%	40	2.0%	0	0.0%	110	0.7%
Total (All Subjects)	9,475		1,970		4,495		15,940	

Source : HESA

Table 8b: Proportion of students gaining qualifications at NI HEIs in Broad and Narrow STEM subjects by level of qualification - 2015/16

Subject Area	First degree		Other Undergraduate		Postgraduate		Total	
Broad STEM	4,655	49.1%	935	47.4%	1,885	41.9%	7,470	46.9%
Narrow STEM	2,455	25.9%	320	16.2%	865	19.3%	3,640	22.8%
Total (All Subjects)	9,475		1,970		4,495		15,940	

Source : HESA

Table 8c: Students gaining qualifications at NI HEIs by qualifications gained and gender - 2015/16

Subject Area	Male		Female		Total
Medicine & dentistry	195	39.4%	300	60.6%	500
Subjects allied to medicine	420	15.9%	2,225	84.1%	2,645
Biological sciences	410	37.2%	695	62.8%	1,105
Agriculture & related subjects	65	35.2%	115	64.8%	180
Physical sciences	230	51.1%	220	48.9%	450
Mathematical sciences	60	48.7%	60	51.3%	120
Computer science	765	74.7%	260	25.3%	1,025
Engineering & technology	765	81.7%	170	18.3%	940
Architecture, building & planning	330	64.5%	180	35.5%	510
Social studies	520	32.2%	1,095	67.8%	1,615
Law	250	35.9%	445	64.1%	695
Business & administrative studies	1,285	49.1%	1,330	50.9%	2,615
Mass communications and documentation	120	41.1%	170	58.9%	290
Languages	150	27.5%	400	72.5%	555
Historical and philosophical studies	245	53.0%	215	47.0%	460
Creative arts & design	285	40.1%	430	59.9%	715
Education	375	26.6%	1,035	73.4%	1,415
Combined	55	50.0%	55	50.0%	110
Total (All Subjects)	6,530	41.0%	9,410	59.0%	15,940

Source : HESA

Table 8d: Proportion of students gaining qualifications at NI HEIs in Broad and Narrow STEM subjects by gender - 2015/16

Subject Area	Male		Female		Total
Broad STEM	3,240	49.7%	4,230	44.9%	7,470
Narrow STEM	2,235	34.2%	1,410	15.0%	3,640
Total (All Subjects)	6,530		9,410		15,940

Source : HESA

To prevent the identification of individuals, figures in the attached table are rounded to the nearest 5, with 0, 1, 2 rounded to 0. Due to rounding, the sum of numbers in each row or column may not match the total shown.

Table 9: Students gaining first degrees at NI Higher Education Institutions by subject area, degree classification and gender - 2015/16

Subject area	Gender	Degree Classification					Total
		First class honours	Second class, upper division	Second class, lower division	Third class/ Pass	Unclassified	
Medicine & dentistry	Male	0	0	0	0	115	115
	Female	0	0	0	0	180	180
	Total	0	0	0	0	290	295
Subjects allied to medicine	Male	65	130	65	10	0	270
	Female	355	610	240	20	0	1,225
	Total	415	740	305	30	0	1,495
Biological sciences	Male	55	145	70	15	0	285
	Female	85	265	90	5	0	445
	Total	145	410	160	20	0	730
Agriculture & related subjects	Male	5	35	5	0	0	40
	Female	25	40	0	0	0	65
	Total	30	70	5	0	0	105
Physical sciences	Male	45	65	25	5	0	140
	Female	35	65	30	5	0	135
	Total	80	135	55	10	0	275
Mathematical sciences	Male	15	15	15	5	0	50
	Female	20	20	15	5	0	55
	Total	35	35	25	10	0	110
Computer science	Male	150	235	150	25	0	555
	Female	40	85	40	10	0	175
	Total	190	315	190	35	0	730
Engineering & technology	Male	170	205	105	40	0	520
	Female	35	40	10	5	0	90
	Total	210	245	115	45	0	610
Architecture, building & planning	Male	40	95	65	15	0	215
	Female	20	35	20	15	0	90
	Total	60	135	85	30	0	305
Social studies	Male	55	175	90	20	0	345
	Female	105	415	140	25	0	680
	Total	155	585	230	45	0	1,020
Law	Male	15	90	35	5	0	140
	Female	30	185	40	5	0	260
	Total	45	270	75	5	0	400
Business & administrative studies	Male	125	320	200	35	0	675
	Female	185	405	155	25	0	765
	Total	305	725	350	60	0	1,440
Mass communications and documentation	Male	10	40	30	0	0	80
	Female	20	55	30	0	0	105
	Total	30	90	60	5	0	185
Languages	Male	20	50	25	5	0	100
	Female	60	165	60	5	0	290
	Total	80	215	85	10	0	395
Historical and philosophical studies	Male	30	115	40	5	0	195
	Female	30	105	35	5	0	170
	Total	60	220	75	10	0	365
Creative arts & design	Male	40	110	45	5	0	200
	Female	75	190	70	10	0	345
	Total	120	300	110	15	0	545
Education	Male	20	35	10	0	0	65
	Female	95	175	50	10	5	340
	Total	115	210	55	15	5	405
Combined	Male	5	5	5	5	15	35
	Female	0	5	5	5	10	30
	Total	5	15	10	10	25	65
All First Degrees	Male	865	1,860	975	195	135	4,030
	Female	1,215	2,860	1,020	145	200	5,440
	Total	2,080	4,720	1,995	345	330	9,475

Source : HESA

To prevent the identification of individuals, figures in the attached table are rounded to the nearest 5, with 0, 1, 2 rounded to 0. Due to rounding, the sum of numbers in each row or column may not match the total shown.

Table 9a: Students gaining first degrees at NI Higher Education Institutions by degree classification and gender - 2015/16

Gender	Degree Classification					Total
	First class honours	Second class, upper division	Second class, lower division	Third class/ Pass	Unclassified/ Classification	
Male	865	1,860	975	195	135	4,030
Female	1,215	2,860	1,020	145	200	5,440
Total	2,080	4,720	1,995	345	330	9,475

Source : HESA

Table 9b: Proportion of students gaining first degrees at NI Higher Education Institutions by degree classification and gender - 2014/15

Gender	Degree Classification				First Class or Upper second Class
	First class honours	Second class, upper division	Second class, lower division	Third class/ Pass	
Male	22.2%	47.7%	25.1%	5.1%	69.9%
Female	23.2%	54.6%	19.5%	2.8%	77.7%
Total	22.8%	51.6%	21.8%	3.8%	74.4%

Source : HESA

To prevent the identification of individuals, figures in the attached table are rounded to the nearest 5, with 0, 1, 2 rounded to 0. Due to rounding the sum of numbers in each row or column may not match the total shown.

Table 10: Students gaining qualifications at NI Higher Education Institutions by qualification obtained, level of study and institution - 2011/12 to 2015/16

Level and Year	Full-time						Part-time						Total					
	Institution						Institution						Institution					
	QUB ⁽¹⁾	UU ⁽²⁾	Stranmillis ⁽³⁾	St Mary's ⁽⁴⁾	OU ⁽⁵⁾	Total	QUB ⁽¹⁾	UU ⁽²⁾	Stranmillis ⁽³⁾	St Mary's ⁽⁴⁾	OU ⁽⁵⁾	Total	QUB ⁽¹⁾	UU ⁽²⁾	Stranmillis ⁽³⁾	St Mary's ⁽⁴⁾	OU ⁽⁵⁾	Total
First Degree																		
2011/12	3,440	4,300	220	230	0	8,195	215	445	55	0	195	910	3,655	4,745	275	230	195	9,100
2012/13	3,615	4,065	230	245	0	8,155	210	475	50	0	210	950	3,830	4,540	280	250	210	9,105
2013/14	3,635	3,900	255	205	0	7,995	195	465	10	5	240	920	3,830	4,370	265	205	240	8,915
2014/15	3,720	4,205	215	220	0	8,360	135	450	40	0	300	925	3,855	4,655	255	220	300	9,285
2015/16	3,945	4,240	220	210	0	8,615	160	400	45	0	255	860	4,105	4,640	270	210	255	9,475
Other Undergraduate																		
2011/12	155	175	20	0	0	345	655	1,450	25	0	485	2,615	810	1,620	45	0	485	2,960
2012/13	205	255	30	0	0	490	605	1,495	25	0	415	2,540	810	1,750	55	0	415	3,030
2013/14	245	515	25	0	0	785	330	685	30	0	270	1,315	580	1,195	55	0	270	2,100
2014/15	195	530	45	0	0	770	340	670	45	0	145	1,200	535	1,200	90	0	145	1,975
2015/16	270	395	35	0	0	705	475	645	25	0	120	1,270	745	1,045	60	0	120	1,970
All Undergraduate																		
2011/12	3,595	4,475	240	230	0	8,540	870	1,895	80	0	685	3,530	4,465	6,365	320	230	685	12,065
2012/13	3,825	4,320	260	245	0	8,650	815	1,970	75	0	625	3,490	4,640	6,290	335	250	625	12,135
2013/14	3,880	4,415	280	205	0	8,780	530	1,150	40	5	515	2,230	4,410	5,565	320	205	515	11,010
2014/15	3,915	4,735	265	220	0	9,135	475	1,120	85	0	450	2,125	4,390	5,855	345	220	450	11,260
2015/16	4,215	4,635	255	210	0	9,320	635	1,045	75	0	375	2,125	4,850	5,680	330	210	375	11,445
Postgraduate																		
2011/12	1,525	910	35	20	0	2,490	955	1,245	10	15	80	2,305	2,485	2,155	45	35	80	4,800
2012/13	1,545	1,155	20	20	0	2,735	950	1,135	20	25	55	2,180	2,490	2,285	40	45	55	4,915
2013/14	1,405	1,190	20	20	0	2,630	955	1,190	35	15	75	2,270	2,360	2,380	55	35	75	4,900
2014/15	1,420	1,070	20	20	0	2,525	995	1,125	35	20	45	2,225	2,415	2,195	55	40	45	4,750
2015/16	1,400	915	20	20	0	2,355	955	1,070	50	20	45	2,135	2,360	1,985	70	40	45	4,495
Total																		
2011/12	5,120	5,385	275	250	0	11,030	1,825	3,140	90	15	760	5,830	6,945	8,525	365	265	760	16,860
2012/13	5,365	5,475	275	270	0	11,385	1,765	3,105	95	25	680	5,670	7,130	8,575	375	295	680	17,055
2013/14	5,285	5,605	300	225	0	11,410	1,485	2,340	70	20	590	4,500	6,770	7,940	370	240	590	15,910
2014/15	5,335	5,805	280	240	0	11,660	1,475	2,245	115	20	495	4,350	6,805	8,050	400	260	495	16,010
2015/16	5,620	5,550	275	230	0	11,675	1,590	2,115	120	20	415	4,265	7,210	7,665	400	250	415	15,940

Source : HESA

Notes:

(1) The Queen's University of Belfast (2) Ulster University (3) Stranmillis University College (4) St Mary's University College (5) Open University

To prevent the identification of individuals, figures in the attached table are rounded to the nearest 5, with 0, 1, 2 rounded to 0. Due to rounding, the sum of numbers in each row or column may not match the total shown.

Table 10a: Northern Ireland domiciled students gaining qualifications at NI HEIs by mode of study and institution 2006/07 to 2015/16

Mode and year	Institution											
	QUB ⁽¹⁾	QUB ⁽¹⁾ %	UU ⁽²⁾	UU ⁽²⁾ %	Stranmillis ⁽³⁾	Stranmillis ⁽³⁾ %	St Mary's ⁽⁴⁾	St Mary's ⁽⁴⁾ %	OU ⁽⁵⁾	OU ⁽⁵⁾ %	Total	
Full-time	2011/12	5,120	46.4%	5,385	48.8%	275	2.5%	250	2.3%	0	0.0%	11,030
	2012/13	5,365	47.1%	5,475	48.1%	275	2.4%	270	2.4%	0	0.0%	11,385
	2013/14	5,285	46.3%	5,605	49.1%	300	2.6%	225	2.0%	0	0.0%	11,410
	2014/15	5,335	45.8%	5,805	49.8%	280	2.4%	240	2.1%	0	0.0%	11,660
	2015/16	5,620	48.1%	5,550	47.6%	275	2.4%	230	2.0%	0	0.0%	11,675
Part-time	2011/12	1,825	31.3%	3,140	53.9%	90	1.5%	15	0.3%	760	13.1%	5,830
	2012/13	1,765	31.1%	3,105	54.7%	95	1.7%	25	0.5%	680	12.0%	5,670
	2013/14	1,485	32.9%	2,340	52.0%	70	1.6%	20	0.4%	590	13.1%	4,500
	2014/15	1,475	33.9%	2,245	51.6%	115	2.7%	20	0.5%	495	11.4%	4,350
	2015/16	1,590	37.3%	2,115	49.6%	120	2.9%	20	0.4%	415	9.8%	4,265
Total	2011/12	6,945	41.2%	8,525	50.6%	365	2.2%	265	1.6%	760	4.5%	16,860
	2012/13	7,130	41.8%	8,575	50.3%	375	2.2%	295	1.7%	680	4.0%	17,055
	2013/14	6,770	42.5%	7,940	49.9%	370	2.3%	240	1.5%	590	3.7%	15,910
	2014/15	6,805	42.5%	8,050	50.3%	400	2.5%	260	1.6%	495	3.1%	16,010
	2015/16	7,210	45.2%	7,665	48.1%	400	2.5%	250	1.6%	415	2.6%	15,940

Table 10b: Students gaining qualifications at NI HEIs by mode of study and Institution 2014/15 and 2015/16

Mode of Study	Institution	2014/15	2015/16	percentage change from 2014/15 to 2015/16
Full-time	QUB ⁽¹⁾	5,335	5,620	5.3%
	UU ⁽²⁾	5,805	5,550	-4.3%
	Stranmillis ⁽³⁾	280	275	-2.1%
	St Mary's ⁽⁴⁾	240	230	-3.8%
	OU ⁽⁵⁾	0	0	-
	Total		11,660	11,675
Part-time	QUB	1,475	1,590	7.9%
	UU	2,245	2,115	-5.8%
	Stranmillis	115	120	4.3%
	St Mary's	20	20	0.0%
	OU	495	415	-15.8%
	Total		4,350	4,265
Total	QUB	6,805	7,210	5.9%
	UU	8,050	7,665	-4.7%
	Stranmillis	400	400	0.0%
	St Mary's	260	250	-4.2%
	OU	495	415	-15.8%
	Total		16,010	15,940

Source : HESA

Table 10c: Students gaining qualifications at NI HEIs by level of qualification and Institution 2014/15 and 2015/16

Level of Qualification	Institution	2014/15	2015/16	percentage change from 2014/15 to 2015/16
First degree	QUB	3,855	4,105	6.4%
	UU	4,655	4,640	-0.3%
	Stranmillis	255	270	4.7%
	St Mary's	220	210	-4.5%
	OU	300	255	-15.6%
	Total		9,285	9,475
Other undergraduate	QUB	535	745	39.2%
	UU	1,200	1,045	-13.1%
	Stranmillis	90	60	-31.1%
	St Mary's	0	0	-
	OU	145	120	-18.4%
	Total		1,975	1,970
Postgraduate	QUB	2,415	2,360	-2.3%
	UU	2,195	1,985	-9.5%
	Stranmillis	55	70	28.3%
	St Mary's	40	40	0.0%
	OU	45	45	0.0%
	Total		4,750	4,495
Total	QUB	6,805	7,210	5.9%
	UU	8,050	7,665	-4.7%
	Stranmillis	400	400	0.0%
	St Mary's	260	250	-4.2%
	OU	495	415	-15.8%
	Total		16,010	15,940

Source : HESA

Notes

- (1) The Queen's University of Belfast
- (2) Ulster University
- (3) Stranmillis University College
- (4) St Mary's University College
- (5) The Open University

To prevent the identification of individuals, figures in the attached table are rounded to the nearest 5, with 0, 1, 2 rounded to 0. Due to rounding, the sum of numbers in each row or column may not match the total shown.

Table 11: Students gaining qualifications at NI Higher Education Institutions by country of domicile, level of qualification, mode of qualification and institution - 2015/16

Domicile and level	Full-time						Part-time						Total					
	Institution						Institution						Institution					
	QUB ⁽¹⁾	UU ⁽²⁾	Stranmillis ⁽³⁾	St Mary's ⁽⁴⁾	OU ⁽⁵⁾	Total	QUB ⁽¹⁾	UU ⁽²⁾	Stranmillis ⁽³⁾	St Mary's ⁽⁴⁾	OU ⁽⁵⁾	Total	QUB ⁽¹⁾	UU ⁽²⁾	Stranmillis ⁽³⁾	St Mary's ⁽⁴⁾	OU ⁽⁵⁾	Total
NI																		
Undergraduate	3,450	4,215	255	210	0	8,130	590	835	70	0	375	1,870	4,040	5,045	330	210	375	10,000
Postgraduate	925	565	20	15	0	1,525	760	785	45	20	45	1,650	1,680	1,350	65	35	45	3,175
Total	4,375	4,780	275	230	0	9,655	1,350	1,620	115	20	415	3,520	5,720	6,400	390	245	415	13,175
GB																		
Undergraduate	200	60	0	0	0	260	5	110	0	0	0	115	205	170	0	0	0	375
Postgraduate	50	20	0	0	0	70	90	155	0	0	0	245	140	170	0	0	0	315
Total	250	80	0	0	0	330	95	265	0	0	0	360	345	340	0	0	0	685
ROI																		
Undergraduate	60	155	0	0	0	215	25	100	0	0	0	130	85	255	0	0	0	345
Postgraduate	95	95	0	0	0	190	80	125	5	0	0	210	175	215	5	5	0	400
Total	155	250	0	0	0	405	110	225	5	0	0	340	260	475	5	5	0	745
Other EU																		
Undergraduate	10	35	0	0	0	45	0	0	0	0	0	0	10	35	0	0	0	45
Postgraduate	40	10	0	0	0	50	5	5	0	0	0	10	45	15	0	0	0	60
Total	50	45	0	0	0	95	5	5	0	0	0	10	55	50	0	0	0	105
Non EU																		
Undergraduate	500	170	0	0	0	670	10	0	0	0	0	10	510	170	0	0	0	680
Postgraduate	290	230	0	0	0	520	25	5	0	0	0	25	315	230	0	0	0	545
Total	790	400	0	0	0	1,190	35	5	0	0	0	35	820	405	0	0	0	1,225
Total																		
Undergraduate	4,215	4,635	255	210	0	9,320	635	1,045	75	0	375	2,125	4,850	5,680	330	210	375	11,445
Postgraduate	1,400	915	20	20	0	2,355	955	1,070	50	20	45	2,135	2,360	1,985	70	40	45	4,495
Total	5,620	5,550	275	230	0	11,675	1,590	2,115	120	20	415	4,265	7,210	7,665	400	250	415	15,940

Source : HESA

Notes:

(1) The Queen's University of Belfast (2) Ulster University (3) Stranmillis University College (4) St Mary's University College (5) Open University

To prevent the identification of individuals, figures in the attached table are rounded to the nearest 5, with 0, 1, 2 rounded to 0.

Due to rounding, the sum of numbers in each row or column may not match the total shown.

Table 11a: Students gaining qualifications at NI HEIs by country of domicile and institution - 2015/16

Domicile	Institution					Total
	QUB ⁽¹⁾	UU ⁽²⁾	Stranmilis ⁽³⁾	St Mary's ⁽⁴⁾	OU ⁽⁵⁾	
NI	79.4%	83.4%	98.2%	98.8%	100.0%	82.7%
GB	4.8%	4.4%	0.0%	0.0%	0.0%	4.3%
ROI	3.6%	6.2%	1.8%	1.2%	0.0%	4.7%
Other EU	0.8%	0.7%	0.0%	0.0%	0.0%	0.7%
Non EU	11.4%	5.3%	0.0%	0.0%	0.0%	7.7%

Non NI Domicile	1,485	1,270	5	5	0	2,765
Non NI Domicile %	20.6%	16.6%	1.8%	1.2%	0.0%	17.3%

Source : HESA

Table 11b: Country of domicile breakdown of students gaining qualifications at NI HEIs by mode of study and institution - 2015/16

Domicile	Full-time						Part-time						Total					
	Institution						Institution						Institution					
	QUB ⁽¹⁾	UU ⁽²⁾	Stranmilis ⁽³⁾	St Mary's ⁽⁴⁾	OU ⁽⁵⁾	Total	QUB ⁽¹⁾	UU ⁽²⁾	Stranmilis ⁽³⁾	St Mary's ⁽⁴⁾	OU ⁽⁵⁾	Total	QUB ⁽¹⁾	UU ⁽²⁾	Stranmilis ⁽³⁾	St Mary's ⁽⁴⁾	OU ⁽⁵⁾	Total
NI	45.3%	49.5%	2.8%	2.4%	0.0%	9,655	38.3%	46.0%	3.3%	0.5%	11.9%	3,520	43.4%	48.6%	3.0%	1.9%	3.2%	13,175
GB	76.3%	23.7%	0.0%	0.0%	0.0%	330	26.5%	73.5%	0.0%	0.0%	0.0%	360	50.4%	49.6%	0.0%	0.0%	0.0%	685
ROI	38.0%	61.2%	0.2%	0.5%	0.0%	405	31.7%	66.3%	1.8%	0.3%	0.0%	340	35.1%	63.5%	0.9%	0.4%	0.0%	745
Other EU	51.5%	48.5%	0.0%	0.0%	0.0%	95	60.0%	40.0%	0.0%	0.0%	0.0%	10	52.3%	47.7%	0.0%	0.0%	0.0%	105
Non EU	66.4%	33.6%	0.0%	0.0%	0.0%	1,190	91.7%	8.3%	0.0%	0.0%	0.0%	35	67.1%	32.9%	0.0%	0.0%	0.0%	1,225

To prevent the identification of individuals, figures in the attached table are rounded to the nearest 5, with 0, 1, 2 rounded to 0. Due to rounding, the sum of numbers in each row or column may not match the total shown.

UK COMPARISON

Table 12: Students gaining qualifications at UK HEIs by level of study, mode of study and country of Institution - 2011/12 to 2015/16.

Level and Year	Full-time					Part-time					Total				
	NI	England	Scotland	Wales	Total	NI	England	Scotland	Wales	Total	NI	England	Scotland	Wales	Total
First Degree															
2011/12	8,195	290,455	30,915	21,240	350,805	910	34,770	3,170	1,340	40,185	9,100	325,220	34,085	22,580	390,990
2012/13	8,155	302,370	32,415	21,445	364,385	950	33,975	3,055	1,405	39,385	9,105	336,345	35,470	22,850	403,770
2013/14	7,995	319,875	33,320	22,265	383,460	920	32,775	3,065	1,455	38,215	8,915	352,655	36,385	23,720	421,675
2014/15	8,360	296,485	33,110	20,405	358,355	925	31,800	3,100	1,395	37,225	9,285	328,285	36,210	21,800	395,580
2015/16	8,615	303,815	34,390	20,420	367,240	860	27,835	2,750	1,140	32,580	9,475	331,650	37,140	21,560	399,820
Other Undergraduate															
2011/12	345	55,190	5,355	3,035	63,930	2,620	58,775	3,435	3,370	68,200	2,965	113,965	8,790	6,410	132,125
2012/13	490	52,070	5,615	3,105	61,275	2,540	51,600	3,380	3,315	60,840	3,030	103,670	8,995	6,420	122,115
2013/14	785	44,710	5,460	2,920	53,875	1,315	36,965	3,040	2,825	44,145	2,100	81,675	8,500	5,745	98,015
2014/15	770	39,810	5,290	3,400	49,270	1,200	32,130	2,615	2,610	38,555	1,975	71,940	7,905	6,010	87,825
2015/16	705	36,930	5,235	3,470	46,340	1,270	28,105	2,615	2,425	34,415	1,970	65,040	7,850	5,895	80,755
All Undergraduate															
2011/12	8,540	345,645	36,270	24,280	414,730	3,525	93,545	6,600	4,710	108,385	12,065	439,190	42,870	28,990	523,115
2012/13	8,650	354,440	38,025	24,545	425,660	3,490	85,575	6,435	4,725	100,225	12,135	440,015	44,465	29,270	525,885
2013/14	8,780	364,585	38,780	25,190	437,330	2,230	69,745	6,105	4,280	82,360	11,010	434,330	44,885	29,465	519,690
2014/15	9,135	336,290	38,400	23,805	407,625	2,125	63,930	5,715	4,005	75,780	11,260	400,220	44,115	27,810	483,405
2015/16	9,320	340,745	39,625	23,890	413,580	2,125	55,945	5,360	3,565	66,995	11,445	396,690	44,985	27,455	480,575
Postgraduate															
2011/12	2,490	151,620	19,300	10,405	183,820	2,305	66,650	5,755	5,560	80,270	4,800	218,270	25,055	15,965	264,090
2012/13	2,735	150,560	19,915	9,595	182,800	2,180	66,990	5,630	4,410	79,210	4,915	217,550	25,545	14,005	262,015
2013/14	2,630	149,675	20,845	9,615	182,770	2,270	63,270	5,885	3,715	75,140	4,900	212,945	26,730	13,330	257,905
2014/15	2,525	152,005	21,440	9,790	185,765	2,225	64,190	5,620	3,800	75,835	4,750	216,195	27,065	13,590	261,600
2015/16	2,355	155,030	19,970	9,210	186,570	2,135	63,685	5,870	3,890	75,580	4,495	218,715	25,845	13,100	262,150
Total															
2011/12	11,030	497,265	55,570	34,685	598,550	5,830	160,195	12,355	10,270	188,655	16,860	657,460	67,930	44,955	787,205
2012/13	11,385	505,000	57,940	34,140	608,465	5,670	152,565	12,065	9,135	179,435	17,055	657,565	70,005	43,275	787,900
2013/14	11,410	514,260	59,625	34,805	620,100	4,500	133,010	11,990	7,995	157,500	15,910	647,275	71,615	42,795	777,600
2014/15	11,660	488,300	59,840	33,595	593,390	4,350	128,120	11,335	7,805	151,615	16,010	616,420	71,175	41,400	745,005
2015/16	11,675	495,775	59,595	33,100	600,150	4,265	119,630	11,235	7,455	142,580	15,940	615,405	70,830	40,555	742,730

To prevent the identification of individuals, figures in the attached table are rounded to the nearest 5, with 0, 1, 2 rounded to 0.

Due to rounding, the sum of numbers in each row or column may not match the total shown.

Table 12a: Students gaining qualifications at UK HEIs by mode of study and location of institution - 2014/15 and 2015/16

Mode of Study	Location of Institution			percentage change from 2014/15 to 2015/16
		2014/15	2015/16	
Full-time	NI	11,660	11,675	0.2%
	England	488,300	495,775	1.5%
	Scotland	59,840	59,595	-0.4%
	Wales	33,595	33,100	-1.5%
	Total UK	593,390	600,150	1.1%
Part-time	NI	4,350	4,265	-2.0%
	England	128,120	119,630	-6.6%
	Scotland	11,335	11,235	-0.9%
	Wales	7,805	7,455	-4.5%
	Total UK	151,615	142,580	-6.0%
Total	NI	16,010	15,940	-0.4%
	England	616,420	615,405	-0.2%
	Scotland	71,175	70,830	-0.5%
	Wales	41,400	40,555	-2.0%
	Total UK	745,005	742,730	-0.3%

Source : HESA

Table 12b: Students gaining qualifications at UK HEIs by level of qualification and location of institution - 2014/15 and 2015/16

Level of Qualification	Location of Institution			percentage change from 2014/15 to 2015/16
		2014/15	2015/16	
First degree	NI	9,285	9,475	2.0%
	England	328,285	331,650	1.0%
	Scotland	36,210	37,140	2.6%
	Wales	21,800	21,560	-1.1%
	Total UK	395,580	399,820	1.1%
Other undergraduate	NI	1,975	1,970	-0.1%
	England	71,940	65,040	-9.6%
	Scotland	7,905	7,850	-0.7%
	Wales	6,010	5,895	-1.9%
	Total UK	87,825	80,755	-8.1%
Postgraduate	NI	4,750	4,495	-5.4%
	England	216,195	218,715	1.2%
	Scotland	27,065	25,845	-4.5%
	Wales	13,590	13,100	-3.6%
	Total UK	261,600	262,150	0.2%
Total	NI	16,010	15,940	-0.4%
	England	616,420	615,405	-0.2%
	Scotland	71,175	70,830	-0.5%
	Wales	41,400	40,555	-2.0%
	Total UK	745,005	742,730	-0.3%

Source : HESA

To prevent the identification of individuals, figures in the attached table are rounded to the nearest 5, with 0, 1, 2 rounded to 0. Due to rounding, the sum of numbers in each row or column may not match the total shown.