



## School Census Results, 2017

26 July 2017  
SFR 77/2017

This Statistical First Release is primarily based upon information collected by the School Census. The census data in this release relate to the position on Tuesday 10 January 2017.

### Key results

#### Schools

Overall, there were 27 fewer Local Authority (LA) maintained schools than at January 2016.



	2016		2017
LA Maintained Schools	1,574	↓	1,547
All Schools	1,640	↓	1,617
Nursery	13	↓	11
Primary	1,310	↓	1,287
Middle	7	↑	10
Secondary	205	↓	200
Special	39	→	39
Independent	66	↑	70

#### Pupils

There were 47 fewer pupils in LA maintained schools than at January 2016.



	2016		2017
	466,555	↓	466,508

#### Free School Meals

The percentage of compulsory aged pupils known to be eligible for free school meals decreased by 0.6 percentage points since January 2016.



	2016		2017
	18.4%	↓	17.8%

#### Class size



8.2 per cent of pupils (8,794) were in infant classes of over 30 pupils – up from 7.6 per cent in January 2016. There was an increase of pupils in both lawfully and unlawfully large infant classes.

### About this release

An annual report that presents data collected from the School Census, with additional information on teacher sickness absence.

The teacher sickness absence data relates to the preceding calendar year. These figures are not included in the School Census. This information is collected directly from the local authorities in January each year.

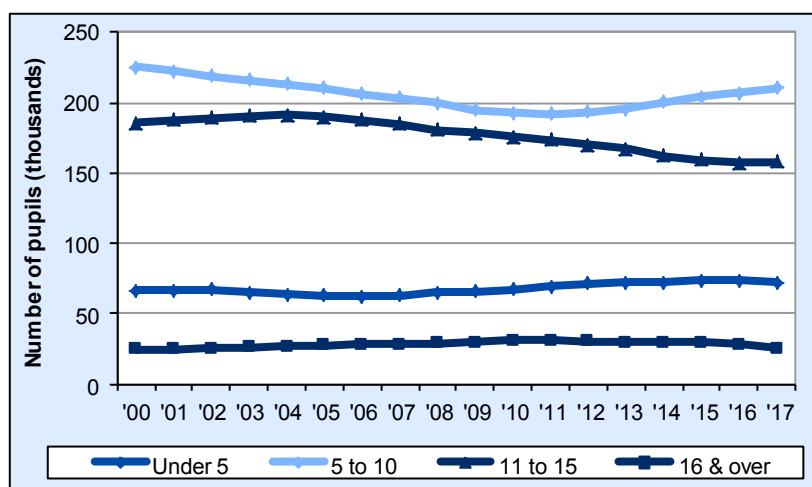
### In this release

Schools and Pupils	2
Staff	9
Free School Meals	14
Ethnic Background	16
Special Educational Needs (SEN)	17
Class Size	20
Independent Schools	22
Teacher Sickness Absence	24

## Schools and pupils

- The local authority with the most **schools** was Cardiff with 127 and the local authority with the fewest was Blaenau Gwent with 24 schools. ([Table 1](#))
- The number of Middle schools continues to increase, rising to 10 in January 2017 from 7 in January 2016. ([Table 1](#))
- Gwynedd had the most **Welsh medium schools** with 105, and the local authority with the fewest was Blaenau Gwent with 1 school. ([Table 2](#))
- The number of **pupils in Welsh medium schools** has increased to 105,845 from 104,959 in January 2016. There has been a decline amongst secondary schools but this is accounted for by the increase in Welsh medium middle schools. ([Table 2](#))
- Of the **pupils aged under 5** in maintained schools in Wales, the majority of them were attending school on a full time basis. ([Table 4](#))
- The **number of pupils** in each local authority ranged between 8,798 in Merthyr Tydfil, to 54,129 in Cardiff. ([Table 5](#))
- The number of **full-time equivalent pupils in schools** was highest in Cardiff at 51,871.0 pupils and lowest in Merthyr Tydfil at 8,665.0 pupils. ([Table 6](#))

**Chart 1: Number of pupils by age group, in maintained schools**



- The number of pupils aged under 5 has decreased from 73,693 pupils in January 2016 to 72,126 pupils in January 2017.
- The numbers of pupils aged 5 to 10 have been increasing since 2011, to reach 210,437 in 2017. This reflects the increasing birth rates in recent years.
- The numbers of pupils aged 11 to 15 increased from 157,635 (January 2016) to 158,212 (January 2017). Prior to 2016, they had been decreasing year on year since 2004 again reflecting the demographic consequence of lower birth rates in the 2000s.

**Table 1: Number of maintained schools by local authority, January 2017 (a)**

	Nursery	Primary	Middle	Secondary	Special (b)	Total
Isle of Anglesey	.	47	.	5	1	53
Gwynedd	.	93	.	14	2	109
Conwy	.	53	.	7	1	61
Denbighshire	.	46	1	7	2	56
Flintshire	.	64	.	12	2	78
Wrexham	1	58	.	9	1	69
Powys	.	82	1	11	3	97
Ceredigion	.	41	3	4	.	48
Pembrokeshire	.	61	.	8	1	70
Carmarthenshire	1	98	.	12	2	113
Swansea	.	79	.	14	2	95
Neath Port Talbot	.	56	1	8	2	67
Bridgend	.	48	.	9	2	59
The Vale of Glamorgan	2	45	1	7	1	56
Rhondda Cynon Taf	.	102	1	16	4	123
Merthyr Tydfil	1	22	.	4	1	28
Caerphilly	.	75	.	13	1	89
Blaenau Gwent	.	19	2	2	1	24
Torfaen	1	26	.	6	1	34
Monmouthshire	.	30	.	4	1	35
Newport	2	44	.	9	1	56
Cardiff	3	98	.	19	7	127
<b>Wales</b>	<b>11</b>	<b>1,287</b>	<b>10</b>	<b>200</b>	<b>39</b>	<b>1,547</b>
Wales – January 2016	13	1,310	7	205	39	1,574
Wales – January 2015	13	1,330	6	207	39	1,595
Wales – January 2014	17	1,357	4	213	42	1,633
Wales – January 2013	20	1,374	4	216	42	1,656

Source: School Census

(a) Nursery: age under 5. Primary: ages 3/4 to 10. Middle: ages 3/4 to 16/18. Secondary: ages 11 to 16/18.

(b) Special schools, both day and boarding, provide education for children with SEN who cannot be educated satisfactorily in mainstream schools.

**Table 2: Welsh medium schools and pupils, by local authority, January 2017**

	Primary (a)		Middle (b)		Secondary (b)	
	Schools	Pupils	Schools	Pupils	Schools	Pupils
Isle of Anglesey	46	5,660	.	.	4	2,947
Gwynedd	92	10,033	.	.	13	5,494
Conwy	22	2,442	.	.	2	1,261
Denbighshire	16	2,368	.	.	3	2,927
Flintshire	5	902	.	.	1	500
Wrexham	8	1,737	.	.	1	743
Powys	21	2,767	1	486	3	1,861
Ceredigion	36	3,285	3	2,113	3	1,760
Pembrokeshire	18	2,607	.	.	1	907
Carmarthenshire	70	10,348	.	.	5	5,464
Swansea	11	3,263	.	.	2	1,645
Neath Port Talbot	10	2,122	.	.	1	1,099
Bridgend	4	1,102	.	.	1	617
The Vale of Glamorgan	6	1,690	1	1,070	.	.
Rhondda Cynon Taf	16	4,730	1	578	3	2,488
Merthyr Tydfil	2	735	.	.	.	.
Caerphilly	11	2,970	.	.	1	1,539
Blaenau Gwent	1	250	.	.	.	.
Torfaen	3	942	.	.	1	926
Monmouthshire	2	400	.	.	.	.
Newport	3	725	.	.	1	81
Cardiff	17	5,534	.	.	3	2,727
<b>Wales</b>	<b>420</b>	<b>66,612</b>	<b>6</b>	<b>4,247</b>	<b>49</b>	<b>34,986</b>
Wales – January 2016	428	66,101	5	3,459	49	35,399
Wales – January 2015	435	65,460	4	2,448	50	36,485
Wales – January 2014	444	64,366	2	1,577	52	37,400
Wales – January 2013	452	63,192	2	1,634	53	37,692

Source: School Census

(a) Primary schools include Welsh Medium, Dual Stream and Transitional schools.

(b) Includes Welsh Medium and Bilingual schools.

**Table 3: Number of pupils, by age group in maintained schools, January 2013-2017 (a)**

		2013	2014	2015	2016	2017
Nursery	Under 5	1,434	1,353	1,076	1,019	866
	5 and over	0	0	0	0	0
	<b>All ages</b>	<b>1,434</b>	<b>1,353</b>	<b>1,076</b>	<b>1,019</b>	<b>866</b>
Primary	Under 5	70,262	70,655	71,713	72,014	70,176
	5 to 10	193,878	198,726	201,649	204,923	206,741
	11 to 15	44	39	37	17	23
	16 and over	2	1	1	0	0
	<b>All ages</b>	<b>264,186</b>	<b>269,421</b>	<b>273,400</b>	<b>276,954</b>	<b>276,940</b>
Middle	Under 5	238	268	330	415	836
	5 to 10	621	660	970	1,104	2,294
	11 to 15	2,343	2,278	2,695	3,337	5,463
	16 and over	446	336	381	515	570
	<b>All ages</b>	<b>3,648</b>	<b>3,542</b>	<b>4,376</b>	<b>5,371</b>	<b>9,163</b>
Secondary	5 to 10	2	9	3	4	3
	11 to 15	162,843	157,831	154,442	152,280	150,615
	16 and over	28,434	28,587	27,963	26,385	24,194
	<b>All ages</b>	<b>191,279</b>	<b>186,427</b>	<b>182,408</b>	<b>178,669</b>	<b>174,812</b>
Special	Under 5	224	238	245	245	248
	5 to 10	1,103	1,185	1,225	1,297	1,399
	11 to 15	2,070	1,933	1,979	2,001	2,111
	16 and over	924	982	995	999	969
	<b>All ages</b>	<b>4,321</b>	<b>4,338</b>	<b>4,444</b>	<b>4,542</b>	<b>4,727</b>
Total	Under 5	72,158	72,514	73,364	73,693	72,126
	5 to 10	195,604	200,580	203,847	207,328	210,437
	11 to 15	167,300	162,081	159,153	157,635	158,212
	16 and over	29,806	29,906	29,340	27,899	25,733
	<b>All ages</b>	<b>464,868</b>	<b>465,081</b>	<b>465,704</b>	<b>466,555</b>	<b>466,508</b>

Source: School Census

(a) At January each year. Age as at 31 August in the previous year.

**Table 4: Number of pupils, full-time and part-time, by age group and sex, in maintained schools, January 2017 (a)**

		Under 5	5-10	11-15	16 and over	All ages
<b>Nursery:</b>						
Full-time	Boys	90	0	0	0	90
	Girls	73	0	0	0	73
Part-time	Boys	371	0	0	0	371
	Girls	332	0	0	0	332
	Total	866	0	0	0	866
<b>Primary:</b>						
Full-time	Boys	21,373	105,531	13	0	126,917
	Girls	20,631	101,208	10	0	121,849
Part-time	Boys	14,452	2	0	0	14,454
	Girls	13,720	0	0	0	13,720
	Total	70,176	206,741	23	0	276,940
<b>Middle:</b>						
Full-time	Boys	217	1,141	2,751	231	4,340
	Girls	199	1,153	2,712	339	4,403
Part-time	Boys	211	0	0	0	211
	Girls	209	0	0	0	209
	Total	836	2,294	5,463	570	9,163
<b>Secondary:</b>						
Full-time	Boys	0	2	76,963	11,261	88,226
	Girls	0	1	73,652	12,933	86,586
Part-time	Boys	0	0	0	0	0
	Girls	0	0	0	0	0
	Total	0	3	150,615	24,194	174,812
<b>Special:</b>						
Full-time	Boys	154	1,062	1,467	675	3,358
	Girls	63	337	644	294	1,338
Part-time	Boys	19	0	0	0	19
	Girls	12	0	0	0	12
	Total	248	1,399	2,111	969	4,727
<b>Total</b>		<b>72,126</b>	<b>210,437</b>	<b>158,212</b>	<b>25,733</b>	<b>466,508</b>

Source: School Census

(a) Age as at 31 August 2016.

**Table 5: Pupil numbers by local authority, January 2017**

	All pupils						Aged 5-15				
	Nursery	Primary	Middle	Secondary	Special	Total	Primary	Middle	Secondary	Special	Total
Isle of Anglesey	.	5,855	.	3,755	89	9,699	4,400	.	3,195	66	7,661
Gwynedd	.	10,159	.	6,688	214	17,061	7,684	.	5,896	167	13,747
Conwy	.	9,050	.	6,603	217	15,870	6,811	.	5,375	160	12,346
Denbighshire	.	8,689	496	6,219	256	15,660	6,555	394	5,343	197	12,489
Flintshire	.	14,009	.	9,335	210	23,554	10,571	.	8,025	152	18,748
Wrexham	41	13,160	.	6,164	299	19,664	9,871	.	5,836	212	15,919
Powys	.	9,934	486	7,132	289	17,841	7,731	394	6,049	204	14,378
Ceredigion	.	4,407	2,113	2,990	.	9,510	3,353	1,676	2,373	.	7,402
Pembrokeshire	.	10,650	.	6,652	154	17,456	7,927	.	5,663	119	13,709
Carmarthenshire	78	15,914	.	11,035	122	27,149	12,055	.	9,560	104	21,719
Swansea	.	22,266	.	13,358	185	35,809	16,211	.	11,913	119	28,243
Neath Port Talbot	.	12,346	1,519	6,641	258	20,764	9,013	1,436	6,254	240	16,943
Bridgend	.	13,402	.	9,211	359	22,972	9,832	.	7,597	242	17,671
The Vale of Glamorgan	153	12,831	1,070	8,082	245	22,381	9,594	859	6,538	157	17,148
Rhondda Cynon Taf	.	22,373	578	15,158	539	38,648	16,522	466	12,680	374	30,042
Merthyr Tydfil	74	5,718	.	2,828	178	8,798	4,188	.	2,828	116	7,132
Caerphilly	.	17,355	.	10,917	147	28,419	12,720	.	9,900	99	22,719
Blaenau Gwent	.	4,896	2,901	1,330	105	9,232	3,535	2,532	1,330	80	7,477
Torfaen	44	8,664	.	6,200	109	15,017	6,521	.	5,354	84	11,959
Monmouthshire	.	6,787	.	4,788	33	11,608	5,412	.	3,913	33	9,358
Newport	173	15,006	.	9,935	153	25,267	11,340	.	8,268	113	19,721
Cardiff	303	33,469	.	19,791	566	54,129	24,918	.	16,728	472	42,118
<b>Wales</b>	<b>866</b>	<b>276,940</b>	<b>9,163</b>	<b>174,812</b>	<b>4,727</b>	<b>466,508</b>	<b>206,764</b>	<b>7,757</b>	<b>150,618</b>	<b>3,510</b>	<b>368,649</b>
Wales – January 2016	1,019	276,954	5,371	178,669	4,542	466,555	204,940	4,441	152,284	3,298	364,963
Wales – January 2015	1,076	273,400	4,376	182,408	4,444	465,704	201,686	3,665	154,445	3,204	363,000
Wales – January 2014	1,353	269,421	3,542	186,427	4,338	465,081	198,765	2,938	157,840	3,118	362,661
Wales – January 2013	1,434	264,186	3,648	191,279	4,321	464,868	193,922	2,964	162,845	3,173	362,904

Source: School Census

**Table 6: Full-time equivalent pupils by local authority, January 2017**

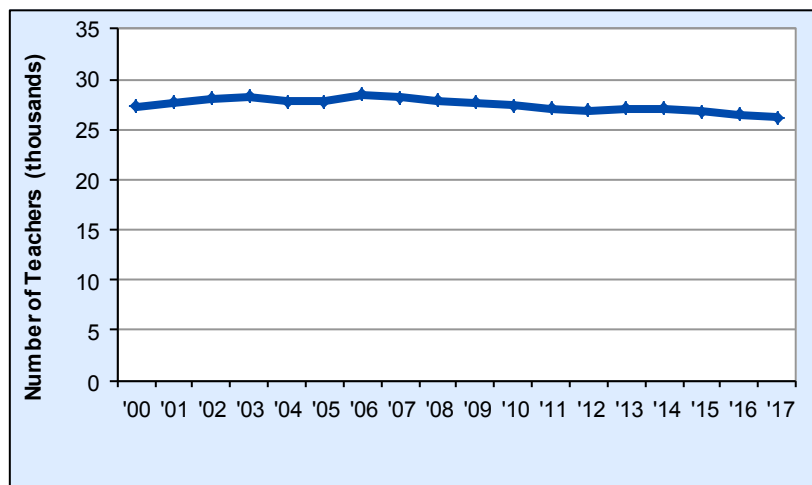
	Nursery	Primary	Middle	Secondary	Special	Total
Isle of Anglesey	.	5,521.0	.	3,755.0	89.0	9,365.0
Gwynedd	.	9,582.0	.	6,688.0	213.5	16,483.5
Conwy	.	8,504.5	.	6,603.0	215.5	15,323.0
Denbighshire	.	8,139.0	492.0	6,219.0	255.0	15,105.0
Flintshire	.	13,175.5	.	9,335.0	208.0	22,718.5
Wrexham	23.0	12,347.5	.	6,164.0	299.0	18,833.5
Powys	.	9,779.0	486.0	7,132.0	288.5	17,685.5
Ceredigion	.	4,273.0	2,076.0	2,990.0	.	9,339.0
Pembrokeshire	.	10,181.0	.	6,652.0	154.0	16,987.0
Carmarthenshire	78.0	15,667.5	.	11,035.0	122.0	26,902.5
Swansea	.	20,632.0	.	13,358.0	182.0	34,172.0
Neath Port Talbot	.	11,424.5	1,497.5	6,641.0	258.0	19,821.0
Bridgend	.	13,241.0	.	9,211.0	357.0	22,809.0
The Vale of Glamorgan	76.5	12,019.5	1,042.0	8,082.0	243.0	21,463.0
Rhondda Cynon Taf	.	21,819.5	567.0	15,158.0	539.0	38,083.5
Merthyr Tydfil	74.0	5,585.0	.	2,828.0	178.0	8,665.0
Caerphilly	.	16,213.0	.	10,917.0	147.0	27,277.0
Blaenau Gwent	.	4,541.5	2,792.5	1,330.0	105.0	8,769.0
Torfaen	25.0	8,147.5	.	6,200.0	108.0	14,480.5
Monmouthshire	.	6,544.5	.	4,788.0	33.0	11,365.5
Newport	86.5	14,150.5	.	9,935.0	153.0	24,325.0
Cardiff	151.5	31,364.5	.	19,791.0	564.0	51,871.0
<b>Wales</b>	<b>514.5</b>	<b>262,853.0</b>	<b>8,953.0</b>	<b>174,812.0</b>	<b>4,711.5</b>	<b>451,844.0</b>
Wales – January 2016	593.0	262,615.0	5,280.0	178,669.0	4,525.0	451,682.0
Wales – January 2015	633.0	259,476.0	4,323.0	182,408.0	4,418.5	451,258.5
Wales – January 2014	785.0	255,691.5	3,496.5	186,426.5	4,311.5	450,711.0
Wales – January 2013	877.5	250,828.5	3,603.0	191,279.0	4,295.0	450,883.0

Source: School Census



## Teachers and support staff

Chart 2: Number of teachers, in maintained schools



- The number of teachers in 2017 was 26,172 – the lowest number since 2000.
- The number of teachers has remained fairly steady over the long term – ranging between a peak of 28,461 in 2006 and 26,172 in 2017.

- The **number of teachers** in maintained schools in each local authority ranged between 3,103 in Cardiff, to 470 in Merthyr Tydfil. ([Table 7](#))
- There were 23,909.8 **full-time equivalent** qualified teachers in maintained schools, 326.0 fewer than at January 2016. ([Table 8](#))
- The number of **full-time equivalent qualified teachers in maintained schools** was highest in Cardiff at 2,810.0 teachers and lowest in Merthyr Tydfil at 441.3 teachers. ([Table 8](#))
- The **number of teachers teaching either Welsh first language or other subjects through the medium of Welsh** in primary, middle and secondary schools was 5,359, 66 fewer than at January 2016. Data on the teaching of Welsh are available on [StatsWales](#).
- The **pupil teacher ratio** for all maintained schools was 18.9, up from 18.6 in January 2016. ([Table 9](#))
- Ceredigion had the lowest primary **pupil teacher ratio** at 19.2, and Rhondda Cynon Taf had the highest at 24.5. The lowest secondary pupil teacher ratio was in Cardiff and Conwy at 15.8, and the highest was in Blaenau Gwent at 18.0. ([Table 9](#))
- The **pupil teacher ratio** is highest in primary schools at 21.8 and lowest in special schools at 6.8. ([Table 9](#))
- There were 23,559.0 **full-time equivalent support staff** in maintained schools, 435.9 fewer than at January 2016. ([Table 10](#))
- The number of **full-time equivalent support staff in maintained schools** was highest in Cardiff at 2,780.5 support staff, and lowest in Merthyr Tydfil at 427.0 support staff. ([Table 10](#))

**Table 7: Number of qualified teachers by local authority, January 2017**

	Nursery	Primary	Middle	Secondary	Special	Total
Isle of Anglesey	.	306	.	254	12	572
Gwynedd	.	540	.	461	27	1,028
Conwy	.	470	.	454	28	952
Denbighshire	.	426	35	401	37	899
Flintshire	.	680	.	616	33	1,329
Wrexham	3	672	.	385	37	1,097
Powys	.	550	34	488	47	1,119
Ceredigion	.	270	143	195	.	608
Pembrokeshire	.	550	.	420	25	995
Carmarthenshire	3	856	.	724	22	1,605
Swansea	.	1,016	.	844	31	1,891
Neath Port Talbot	.	578	85	417	41	1,121
Bridgend	.	627	.	588	53	1,268
The Vale of Glamorgan	5	623	71	527	52	1,278
Rhondda Cynon Taf	.	950	34	972	65	2,021
Merthyr Tydfil	3	268	.	175	24	470
Caerphilly	.	779	.	694	32	1,505
Blaenau Gwent	.	228	169	76	23	496
Torfaen	2	369	.	379	15	765
Monmouthshire	.	337	.	307	10	654
Newport	4	718	.	647	27	1,396
Cardiff	18	1,646	.	1,336	103	3,103
<b>Wales</b>	<b>38</b>	<b>13,459</b>	<b>571</b>	<b>11,360</b>	<b>744</b>	<b>26,172</b>
Wales – January 2016	48	13,558	373	11,727	747	26,453
Wales – January 2015	48	13,624	317	12,047	719	26,755
Wales – January 2014	59	13,670	236	12,378	721	27,064
Wales – January 2013	67	13,533	239	12,519	698	27,056

Source: School Census

**Table 8: Full-time equivalent qualified teachers by local authority, January 2017**

	Nursery	Primary	Middle	Secondary	Special	Total
Isle of Anglesey	.	276.9	.	234.5	12.0	523.4
Gwynedd	.	466.1	.	419.3	25.7	911.1
Conwy	.	418.8	.	419.0	26.6	864.5
Denbighshire	.	367.4	29.6	370.0	33.9	800.9
Flintshire	.	624.5	.	574.5	30.3	1,229.3
Wrexham	3.0	577.8	.	363.0	32.7	976.5
Powys	.	472.8	33.2	437.8	41.0	984.8
Ceredigion	.	222.6	125.9	169.7	.	518.2
Pembrokeshire	.	477.6	.	384.1	23.5	885.2
Carmarthenshire	3.0	775.4	.	677.6	21.6	1,477.6
Swansea	.	899.3	.	784.2	29.0	1,712.5
Neath Port Talbot	.	522.7	80.2	399.9	39.0	1,041.7
Bridgend	.	582.2	.	555.1	50.2	1,187.5
The Vale of Glamorgan	4.5	560.6	68.2	494.5	47.4	1,175.2
Rhondda Cynon Taf	.	891.0	32.4	933.6	60.9	1,917.9
Merthyr Tydfil	3.0	253.5	.	160.9	24.0	441.3
Caerphilly	.	717.1	.	640.2	31.0	1,388.3
Blaenau Gwent	.	213.1	163.2	73.9	19.4	469.6
Torfaen	2.0	348.2	.	357.0	15.0	722.2
Monmouthshire	.	298.9	.	291.7	10.0	600.5
Newport	4.0	644.0	.	599.8	23.8	1,271.6
Cardiff	14.0	1,445.3	.	1,253.4	97.4	2,810.0
<b>Wales</b>	<b>33.5</b>	<b>12,055.6</b>	<b>532.7</b>	<b>10,593.7</b>	<b>694.3</b>	<b>23,909.8</b>
Wales – January 2016	42.3	12,170.8	345.2	10,983.9	693.6	24,235.8
Wales – January 2015	43.4	12,240.2	290.0	11,268.8	668.2	24,510.8
Wales – January 2014	52.8	12,308.2	221.7	11,578.8	660.9	24,822.5
Wales – January 2013	58.3	12,144.6	222.7	11,707.2	637.7	24,770.6

Source: School Census

**Table 9: Pupil teacher ratios within schools by local authority, January 2017**

	Nursery	Primary	Middle	Secondary	Special	Total
Isle of Anglesey	.	19.9	.	16.0	7.4	17.9
Gwynedd	.	20.6	.	15.9	8.3	18.1
Conwy	.	20.3	.	15.8	8.1	17.7
Denbighshire	.	22.2	16.6	16.8	7.5	18.9
Flintshire	.	21.1	.	16.2	6.9	18.5
Wrexham	7.7	21.4	.	17.0	9.2	19.3
Powys	.	20.7	14.6	16.3	7.0	18.0
Ceredigion	.	19.2	16.5	17.6	.	18.0
Pembrokeshire	.	21.3	.	17.3	6.6	19.2
Carmarthenshire	26.0	20.2	.	16.3	5.6	18.2
Swansea	.	22.9	.	17.0	6.3	20.0
Neath Port Talbot	.	21.9	18.7	16.6	6.6	19.0
Bridgend	.	22.7	.	16.6	7.1	19.2
The Vale of Glamorgan	17.0	21.4	15.3	16.3	5.1	18.3
Rhondda Cynon Taf	.	24.5	17.5	16.2	8.8	19.9
Merthyr Tydfil	24.7	22.0	.	17.6	7.4	19.6
Caerphilly	.	22.6	.	17.1	4.7	19.6
Blaenau Gwent	.	21.3	17.1	18.0	5.4	18.7
Torfaen	12.5	23.4	.	17.4	7.2	20.1
Monmouthshire	.	21.9	.	16.4	3.3	18.9
Newport	21.6	22.0	.	16.6	6.4	19.1
Cardiff	10.8	21.7	.	15.8	5.8	18.5
<b>Wales</b>	<b>15.4</b>	<b>21.8</b>	<b>16.8</b>	<b>16.5</b>	<b>6.8</b>	<b>18.9</b>
Wales – January 2016	14.0	21.6	15.3	16.3	6.5	18.6
Wales – January 2015	14.6	21.2	14.9	16.2	6.6	18.4
Wales – January 2014	14.9	20.8	15.8	16.1	6.5	18.2
Wales – January 2013	15.1	20.7	16.2	16.3	6.7	18.2

Source: School Census

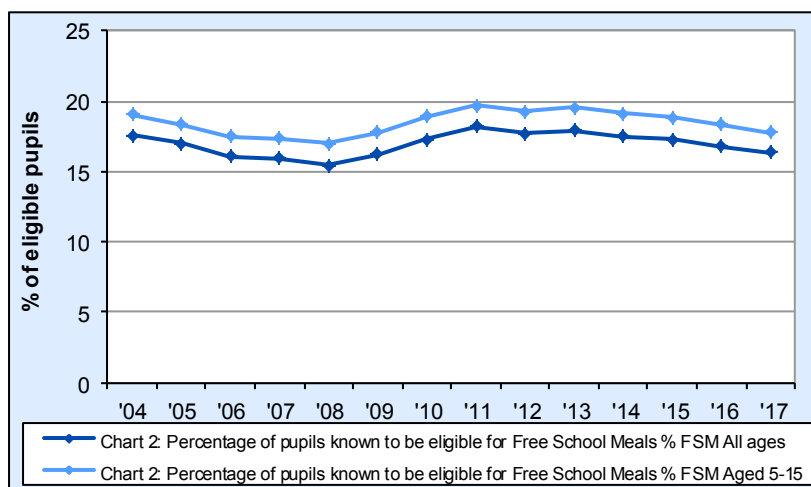
**Table 10: Full-time equivalent support staff by local authority, January 2017**

	Nursery	Primary	Middle	Secondary	Special	Total
Isle of Anglesey	.	311.5	.	158.2	39.7	509.4
Gwynedd	.	494.3	.	242.3	72.3	808.9
Conwy	.	366.2	.	214.2	79.7	660.1
Denbighshire	.	431.0	21.6	283.0	108.3	843.8
Flintshire	.	713.0	.	309.8	89.3	1,112.2
Wrexham	9.5	755.7	.	262.4	155.6	1,183.2
Powys	.	475.7	21.2	236.1	117.4	850.4
Ceredigion	.	288.9	126.7	144.0	.	559.6
Pembrokeshire	.	744.9	.	308.9	91.4	1,145.2
Carmarthenshire	6.2	895.9	.	495.3	63.6	1,461.0
Swansea	.	1,273.3	.	594.7	98.0	1,966.0
Neath Port Talbot	.	626.5	67.7	179.4	103.2	976.8
Bridgend	.	719.9	.	273.5	172.2	1,165.6
The Vale of Glamorgan	10.0	589.0	23.5	211.8	138.2	972.5
Rhondda Cynon Taf	.	1,130.4	19.8	426.5	174.4	1,751.2
Merthyr Tydfil	7.0	275.2	.	77.3	67.5	427.0
Caerphilly	.	857.5	.	312.2	83.0	1,252.6
Blaenau Gwent	.	278.8	158.6	49.2	64.3	551.0
Torfaen	3.6	478.8	.	202.6	71.4	756.5
Monmouthshire	.	401.8	.	184.1	17.1	603.0
Newport	14.4	780.3	.	359.8	67.9	1,222.5
Cardiff	42.8	1,831.5	.	715.6	190.7	2,780.5
<b>Wales</b>	<b>93.5</b>	<b>14,720.0</b>	<b>439.0</b>	<b>6,241.1</b>	<b>2,065.3</b>	<b>23,559.0</b>
Wales – January 2016	76.1	15,032.1	250.5	6,531.8	2,104.4	23,994.9
Wales – January 2015	84.8	15,295.2	219.7	6,801.0	2,040.3	24,441.0
Wales – January 2014	104.0	15,095.2	153.4	6,980.8	2,021.1	24,354.5
Wales – January 2013	115.2	14,675.2	144.6	6,767.6	1,844.2	23,546.8

Source: School Census

## Free school meals (FSM) ([Table 11](#))

**Chart 3: Percentage of pupils known to be eligible for free school meals**



- The percentage of pupils known to be eligible for free school meals in primary, middle, secondary and special schools has fluctuated over the last decade, generally decreasing from 2004 to 2008 and then increasing year on year to 2011. There has been a decrease between 2013 and 2017.

- The **number of pupils** eligible for free meals has decreased from 78,476 pupils in January 2016 to 76,224 pupils in January 2017.
- The **percentage of pupils** known to be eligible for free meals has decreased from 16.8 in January 2016 to 16.3 in January 2017.
- The **number of compulsory aged school pupils (5-15)** eligible for free meals has decreased from 67,040 pupils in January 2016 to 65,689 pupils in January 2017.
- The **percentage of compulsory aged school pupils (5-15)** known to be eligible for free meals has decreased from 18.4 in January 2016 to 17.8 in January 2017.
- The percentage of pupils known to be eligible for free meals was highest in special schools at 40.8 per cent of pupils and 41.9 per cent of compulsory aged school pupils (5-15).
- The **number of pupils** eligible for free meals was highest in Cardiff at 10,322 and lowest in Ceredigion at 972.
- But the **percentage of pupils** eligible for free meals was highest in Rhondda Cynon Taf at 20.8 and lowest in Monmouthshire at 9.6.
- The **number of compulsory aged school pupils (5-15)** eligible for free meals was highest in Cardiff at 9,105 and lowest in Ceredigion at 818.
- Monmouthshire had the lowest **percentage of compulsory aged school pupils (5-15)** eligible for free meals at 10.5, and Blaenau Gwent had the highest at 22.8.

Pupils are eligible for [free school meals](#) if their families are in receipt of certain benefits/support payments.

**Table 11: Pupils known to be eligible for free meals, January 2017**

	All pupils										Aged 5-15									
	Primary & Nursery (a)		Middle		Secondary		Special		Total		Primary		Middle		Secondary		Special		Total	
	Num- ber	Per Cent	Num- ber	Per Cent	Num- ber	Per Cent	Num- ber	Per Cent	Num- ber	Per Cent	Num- ber	Per Cent	Num- ber	Per Cent	Num- ber	Per Cent	Num- ber	Per Cent	Num- ber	Per Cent
Isle of Anglesey	855	14.6	.	.	533	14.2	29	32.6	1,417	14.6	710	16.1	.	.	488	15.3	20	30.3	1,218	15.9
Gwynedd	1,220	12.0	.	.	684	10.2	56	26.2	1,960	11.5	1,014	13.2	.	.	649	11.0	45	26.9	1,708	12.4
Conwy	1,431	15.8	.	.	864	13.1	87	40.1	2,382	15.0	1,213	17.8	.	.	793	14.8	69	43.1	2,075	16.8
Denbighshire	1,459	16.8	35	7.1	936	15.1	98	38.3	2,528	16.1	1,260	19.2	31	7.9	883	16.5	82	41.6	2,256	18.1
Flintshire	1,761	12.6	.	.	1,063	11.4	80	38.1	2,904	12.3	1,509	14.3	.	.	1,019	12.7	61	40.1	2,589	13.8
Wrexham	2,060	15.6	.	.	896	14.5	136	45.5	3,092	15.7	1,713	17.4	.	.	880	15.1	95	44.8	2,688	16.9
Powys	1,133	11.4	39	8.0	660	9.3	91	31.5	1,923	10.8	882	11.4	34	8.6	613	10.1	65	31.9	1,594	11.1
Ceredigion	476	10.8	210	9.9	286	9.6	.	.	972	10.2	380	11.3	178	10.6	260	11.0	.	.	818	11.1
Pembrokeshire	1,648	15.5	.	.	993	14.9	49	31.8	2,690	15.4	1,386	17.5	.	.	934	16.5	37	31.1	2,357	17.2
Carmarthenshire	2,698	16.9	.	.	1,506	13.6	57	46.7	4,261	15.7	2,068	17.2	.	.	1,429	14.9	49	47.1	3,546	16.3
Swansea	3,834	17.2	.	.	2,331	17.5	70	37.8	6,235	17.4	3,225	19.9	.	.	2,216	18.6	41	34.5	5,482	19.4
Neath Port Talbot	2,358	19.1	482	31.7	1,252	18.9	136	52.7	4,228	20.4	2,018	22.4	472	32.9	1,220	19.5	125	52.1	3,835	22.6
Bridgend	2,486	18.5	.	.	1,320	14.3	147	40.9	3,953	17.2	1,829	18.6	.	.	1,196	15.7	103	42.6	3,128	17.7
The Vale of Glamorgan	1,452	11.2	68	6.4	923	11.4	95	38.8	2,538	11.3	1,227	12.8	66	7.7	847	13.0	57	36.3	2,197	12.8
Rhondda Cynon Taf	5,022	22.4	37	6.4	2,722	18.0	249	46.2	8,030	20.8	3,705	22.4	32	6.9	2,483	19.6	178	47.6	6,398	21.3
Merthyr Tydfil	1,157	20.0	.	.	588	20.8	70	39.3	1,815	20.6	851	20.3	.	.	588	20.8	50	43.1	1,489	20.9
Caerphilly	3,313	19.1	.	.	2,074	19.0	54	36.7	5,441	19.1	2,725	21.4	.	.	2,000	20.2	39	39.4	4,764	21.0
Blaenau Gwent	950	19.4	624	21.5	295	22.2	40	38.1	1,909	20.7	794	22.5	582	23.0	295	22.2	31	38.8	1,702	22.8
Torfaen	1,384	15.9	.	.	930	15.0	40	36.7	2,354	15.7	1,187	18.2	.	.	876	16.4	30	35.7	2,093	17.5
Monmouthshire	675	9.9	.	.	412	8.6	33	100.0	1,120	9.6	564	10.4	.	.	382	9.8	33	100.0	979	10.5
Newport	2,572	16.9	.	.	1,532	15.4	46	30.1	4,150	16.4	2,190	19.3	.	.	1,444	17.5	34	30.1	3,668	18.6
Cardiff	6,324	18.7	.	.	3,731	18.9	267	47.2	10,322	19.1	5,453	21.9	.	.	3,424	20.5	228	48.3	9,105	21.6
<b>Wales</b>	<b>46,268</b>	<b>16.7</b>	<b>1,495</b>	<b>16.3</b>	<b>26,531</b>	<b>15.2</b>	<b>1,930</b>	<b>40.8</b>	<b>76,224</b>	<b>16.3</b>	<b>37,903</b>	<b>18.3</b>	<b>1,395</b>	<b>18.0</b>	<b>24,919</b>	<b>16.5</b>	<b>1,472</b>	<b>41.9</b>	<b>65,689</b>	<b>17.8</b>
Wales – January 2016	47,967	17.3	669	12.5	27,943	15.6	1,897	41.8	78,476	16.8	38,943	19.0	605	13.6	26,069	17.1	1,423	43.1	67,040	18.4
Wales – January 2015	49,247	17.9	632	14.4	28,859	15.8	1,930	43.4	80,668	17.3	39,525	19.6	572	15.6	26,815	17.4	1,476	46.1	68,388	18.8
Wales – January 2014	49,396	18.2	577	16.3	29,730	15.9	1,835	42.3	81,538	17.5	39,881	20.1	534	18.2	27,589	17.5	1,414	45.3	69,418	19.1
Wales – January 2013	50,162	18.9	557	15.3	30,962	16.2	1,817	42.1	83,498	18.0	40,135	20.7	508	17.1	28,835	17.7	1,415	44.6	70,893	19.5

Source: School Census

(a) Nursery school figures are too small to show separately.

## Ethnic background

- Of the **total number of pupils aged 5 or over** at primary, middle, secondary and special schools in Wales, 88.9 per cent were classed as White British. This figure has been falling slightly for each of the past five years with most other ethnic backgrounds showing increases over the same period.
- The **percentage of pupils** whose ethnic background was classified as minority ethnic origin was 10.6 and 0.5 per cent were unknown or not stated.
- Of the **pupils whose ethnic background was classified as Black**, 81.6 per cent of them were classified as Black African.
- Of the **pupils whose ethnic background was classified as Asian**, 22.8 per cent of them were classified as Indian, 32.7 per cent as Pakistani, and 34.3 per cent as Bangladeshi.

**Table 12: Number of pupils aged 5 or over, by ethnic background, January 2013-2017**

Ethnic background	2013		2014		2015		2016		2017	
	Number	Per cent (a)	Number	Per cent (a)	Number	Per cent (a)	Number	Per cent (a)	Number	Per cent (a)
<b>White</b>	<b>365,356</b>	<b>93.0</b>	<b>364,260</b>	<b>92.8</b>	<b>363,031</b>	<b>92.5</b>	<b>362,290</b>	<b>92.2</b>	<b>362,721</b>	<b>92.0</b>
White British	357,156	90.9	355,085	90.5	352,850	89.9	351,145	89.4	350,795	88.9
Traveller	345	0.1	346	0.1	378	0.1	385	0.1	389	0.1
Gypsy/ Roma	516	0.1	545	0.1	579	0.1	611	0.2	623	0.2
Any other White background	7,339	1.9	8,284	2.1	9,224	2.4	10,149	2.6	10,914	2.8
<b>Mixed</b>	<b>8,808</b>	<b>2.2</b>	<b>9,337</b>	<b>2.4</b>	<b>9,872</b>	<b>2.5</b>	<b>10,592</b>	<b>2.7</b>	<b>11,166</b>	<b>2.8</b>
White and Black Caribbean	2,082	0.5	2,172	0.6	2,227	0.6	2,314	0.6	2,374	0.6
White and Black African	1,052	0.3	1,120	0.3	1,244	0.3	1,398	0.4	1,524	0.4
White and Asian	2,016	0.5	2,115	0.5	2,212	0.6	2,351	0.6	2,436	0.6
Any other mixed background	3,658	0.9	3,930	1.0	4,189	1.1	4,529	1.2	4,832	1.2
<b>Asian</b>	<b>8,276</b>	<b>2.1</b>	<b>8,696</b>	<b>2.2</b>	<b>8,914</b>	<b>2.3</b>	<b>9,185</b>	<b>2.3</b>	<b>9,341</b>	<b>2.4</b>
Indian	1,731	0.4	1,830	0.5	1,931	0.5	2,056	0.5	2,130	0.5
Pakistani	2,704	0.7	2,866	0.7	2,947	0.8	3,009	0.8	3,057	0.8
Bangladeshi	2,933	0.7	3,064	0.8	3,119	0.8	3,188	0.8	3,203	0.8
Any other Asian background	908	0.2	936	0.2	917	0.2	932	0.2	951	0.2
<b>Black</b>	<b>2,875</b>	<b>0.7</b>	<b>3,005</b>	<b>0.8</b>	<b>3,169</b>	<b>0.8</b>	<b>3,355</b>	<b>0.9</b>	<b>3,462</b>	<b>0.9</b>
Black Caribbean	201	0.1	194	0.0	187	0.0	194	0.0	199	0.1
Black African	2,308	0.6	2,452	0.6	2,598	0.7	2,743	0.7	2,826	0.7
Any other Black background	366	0.1	359	0.1	384	0.1	418	0.1	437	0.1
<b>Chinese</b>	<b>667</b>	<b>0.2</b>	<b>680</b>	<b>0.2</b>	<b>702</b>	<b>0.2</b>	<b>720</b>	<b>0.2</b>	<b>751</b>	<b>0.2</b>
<b>Any other ethnic group</b>	<b>3,951</b>	<b>1.0</b>	<b>4,145</b>	<b>1.1</b>	<b>4,451</b>	<b>1.1</b>	<b>4,639</b>	<b>1.2</b>	<b>5,006</b>	<b>1.3</b>
Total with valid category	389,933	99.3	390,123	99.4	390,139	99.4	390,781	99.5	392,447	99.5
Unknown or not stated	2,777	0.7	2,444	0.6	2,201	0.6	2,081	0.5	1,935	0.5
<b>All pupils</b>	<b>392,710</b>	<b>100.0</b>	<b>392,567</b>	<b>100.0</b>	<b>392,340</b>	<b>100.0</b>	<b>392,862</b>	<b>100.0</b>	<b>394,382</b>	<b>100.0</b>

Source: School Census

(a) Of all pupils aged 5 or over.

Please see these [guidance notes](#) for further information on categories and data collection methods.



## Special Educational Needs (SEN)

A child has special needs if he or she has learning difficulties which requires special educational provision to be made for him or her. A learning difficulty means that the child has significantly greater difficulty in learning than most children of the same age or that the child has a disability that needs different educational facilities from those that the school generally provides for children. Pupils with special educational needs may have Statements issued by the LA or may have their needs identified by the school. In the latter case they come under one of two further categories: School Action or School Action Plus.

- i. Pupils with statements - Pupils for whom the Authority maintains a statement of special educational needs under Part iv of the Education Act 1996. A statement may be issued by the LA after assessment of a child's needs.
- ii. School Action - When a class or subject teacher identify that a pupil has special educational needs they provide interventions that are additional to or different from those provided as part of the school's usual curriculum.
- iii. School Action Plus - When the class or subject teacher and the Special Educational Needs Co-ordinator are provided with advice or support from outside specialists, so that alternative interventions additional or different to those provided for the pupil through 'School Action' can be put in place. The Special Educational Needs Co-ordinator usually takes the lead although day-to-day provision continues to be the responsibility of class or subject teacher.

**From January 2017 maintained schools were allowed to report as many special educational needs for a pupil as required. These reports are not ranked and therefore have no SEN type that can be shown as a pupil's 'Major Need'. That means the data for SEN type shown in Table 14 are not directly comparable with school census results published before 2017.**

- There were 105,577 pupils with special educational needs in maintained schools (22.6 per cent of all pupils). [\(Table 13\)](#)
- 11.9 per cent of the pupils with special educational needs have Statements of SEN. [\(Table 13\)](#)
- There were 136,995 reports of SEN type made – an average of 1.3 per pupil with SEN. [\(Table 14\)](#)
- The most common type of need reported was 'General Learning Difficulties', representing 34.3 per cent of pupils with some form of SEN. [\(Table 14\)](#)
- The most common type of need reported for pupils with Statements of SEN was 'Speech, Language & Communication Difficulties', representing 31.8 per cent of pupils with Statements of SEN. [\(Table 14\)](#)

**Table 13: Pupils with special educational needs (SEN) in maintained schools by type of SEN provision and local authority, January 2017**

	School Action			School Action Plus			Statement			Total		
	Number of pupils	Incidence (a)	Placement (b)	Number of pupils	Incidence (a)	Placement (b)	Number of pupils	Incidence (a)	Placement (b)	Number of pupils	Incidence (a)	Placement (b)
Isle of Anglesey	1,134	0.2	1.9	878	0.2	2.6	304	0.1	2.4	2,316	0.5	2.2
Gwynedd	1,585	0.3	2.7	1,733	0.4	5.1	517	0.1	4.1	3,835	0.8	3.6
Conwy	1,501	0.3	2.5	1,773	0.4	5.3	317	0.1	2.5	3,591	0.8	3.4
Denbighshire	1,678	0.4	2.8	1,794	0.4	5.3	377	0.1	3.0	3,849	0.8	3.6
Flintshire	2,945	0.6	5.0	1,270	0.3	3.8	537	0.1	4.3	4,752	1.0	4.5
Wrexham	2,119	0.5	3.6	1,123	0.2	3.3	577	0.1	4.6	3,819	0.8	3.6
Powys	1,912	0.4	3.2	1,146	0.2	3.4	421	0.1	3.3	3,479	0.7	3.3
Ceredigion	2,042	0.4	3.4	579	0.1	1.7	144	-	1.1	2,765	0.6	2.6
Pembrokeshire	2,910	0.6	4.9	1,291	0.3	3.8	389	0.1	3.1	4,590	1.0	4.3
Carmarthenshire	4,380	0.9	7.4	2,520	0.5	7.5	865	0.2	6.9	7,765	1.7	7.4
Swansea	5,485	1.2	9.3	2,284	0.5	6.8	1,453	0.3	11.5	9,222	2.0	8.7
Neath Port Talbot	3,037	0.7	5.1	1,586	0.3	4.7	795	0.2	6.3	5,418	1.2	5.1
Bridgend	2,941	0.6	5.0	1,255	0.3	3.7	374	0.1	3.0	4,570	1.0	4.3
The Vale of Glamorgan	2,223	0.5	3.8	1,150	0.2	3.4	378	0.1	3.0	3,751	0.8	3.6
Rhondda Cynon Taf	6,372	1.4	10.8	2,466	0.5	7.3	931	0.2	7.4	9,769	2.1	9.3
Merthyr Tydfil	1,482	0.3	2.5	872	0.2	2.6	224	-	1.8	2,578	0.6	2.4
Caerphilly	3,052	0.7	5.1	2,132	0.5	6.3	700	0.2	5.6	5,884	1.3	5.6
Blaenau Gwent	853	0.2	1.4	786	0.2	2.3	264	0.1	2.1	1,903	0.4	1.8
Torfaen	1,515	0.3	2.6	1,412	0.3	4.2	213	-	1.7	3,140	0.7	3.0
Monmouthshire	1,004	0.2	1.7	747	0.2	2.2	273	0.1	2.2	2,024	0.4	1.9
Newport	2,504	0.5	4.2	1,844	0.4	5.5	910	0.2	7.2	5,258	1.1	5.0
Cardiff	6,590	1.4	11.1	3,070	0.7	9.1	1,639	0.4	13.0	11,299	2.4	10.7
<b>Total</b>	<b>59,264</b>	<b>12.7</b>	<b>100.0</b>	<b>33,711</b>	<b>7.2</b>	<b>100.0</b>	<b>12,602</b>	<b>2.7</b>	<b>100.0</b>	<b>105,577</b>	<b>22.6</b>	<b>100.0</b>

Source: School Census

(a) Incidence - the number of pupils expressed as a proportion of the total number of pupils on roll in maintained schools.

(b) Placement - the number of pupils expressed as a proportion of the total number of pupils within each SEN grouping in maintained schools.

e.g. Number of pupils with a statement of SEN divided by the total number of pupils with a statement of SEN in maintained schools.

**Table 14: Reports of Special Educational Needs (SEN) in maintained schools by type of need and SEN provision, January 2017 (a) (b)**

SEN Type	Number of SEN Reports (c)				SEN Reports as a percentage of the pupils in each SEN provision (d)				SEN Reports as a percentage of all pupils on roll (e)			
	School				School				School			
	School Action	Action Plus	State-ment	Total	School Action	Action Plus	State-ment	All SEN	School Action	Action Plus	State-ment	Total
Attention Deficit Hyperactivity Disorder	678	1,346	571	2,595	1.1	4.0	4.5	2.5	0.1	0.3	0.1	0.6
Autistic Spectrum Disorders	639	2,386	3,893	6,918	1.1	7.1	30.9	6.6	0.1	0.5	0.8	1.5
Behavioural, Emotional & Social Difficulties	9,751	10,332	2,589	22,672	16.5	30.6	20.5	21.5	2.1	2.2	0.6	4.9
Dyscalculia	469	249	21	739	0.8	0.7	0.2	0.7	0.1	0.1	-	0.2
Dyslexia	4,947	3,222	378	8,547	8.3	9.6	3.0	8.1	1.1	0.7	0.1	1.8
Dyspraxia	377	503	133	1,013	0.6	1.5	1.1	1.0	0.1	0.1	-	0.2
General Learning Difficulties	27,281	7,983	918	36,182	46.0	23.7	7.3	34.3	5.8	1.7	0.2	7.8
Hearing Impairment	787	1,714	615	3,116	1.3	5.1	4.9	3.0	0.2	0.4	0.1	0.7
Moderate Learning Difficulties	12,170	4,949	2,310	19,429	20.5	14.7	18.3	18.4	2.6	1.1	0.5	4.2
Multi-Sensory Impairment	19	46	91	156	-	0.1	0.7	0.1	-	-	-	-
Physical & Medical Difficulties	1,771	3,108	2,155	7,034	3.0	9.2	17.1	6.7	0.4	0.7	0.5	1.5
Profound & Multiple Learning Difficulties	22	176	703	901	-	0.5	5.6	0.9	-	-	0.2	0.2
Speech, Language & Communications Difficulties	8,614	10,725	4,008	23,347	14.5	31.8	31.8	22.1	1.8	2.3	0.9	5.0
Severe Learning Difficulties	65	521	2,320	2,906	0.1	1.5	18.4	2.8	-	0.1	0.5	0.6
Visual Impairment	294	699	447	1,440	0.5	2.1	3.5	1.4	0.1	0.1	0.1	0.3

Source: School Census

**(a) Please see Table 13 for the number and percentage of Pupils with SEN.**

(b) From January 2017 maintained schools were allowed to report as many types of special educational need for a pupil as required and the ranking of those needs was removed. The 'Major need' used in earlier publications no longer applies and therefore the figures are not directly comparable with previous years.

(c) The number of times each SEN type was reported e.g. if SEN types 'Dyslexia' and 'Dyspraxia' are reported for a pupil that pupil is counted twice, once under each type. The number of SEN reports will therefore be greater than the number of pupils with SEN.

(d) The number of reports for pupils in each SEN provision expressed as a proportion of the total number of pupils within that SEN provision.

e.g. Number of SEN reports for pupils with a statement of SEN divided by the total number of pupils with a statement of SEN in maintained schools.

(e) The number of SEN reports for pupils expressed as a proportion of the total number of pupils on roll in maintained schools.

## Class sizes

### Infant ([Table 15](#))

- 8.2 per cent of pupils (8,794) were in infant classes of over 30 pupils, up from 7.6 per cent in January 2016.
- 276 infant classes (6.6 per cent) in Wales had more than 30 pupils, with 249 of these classes having permissible exceptions. This is more than at January 2016 when 255 classes (6.0 per cent) had over 30 pupils, of which 241 had permissible exceptions.
- The number of pupils in unlawfully large infant classes increased from 490 in January 2016 to 887 in 2017.

**Table 15: Infant class sizes in primary and middle schools (a)**

	2015		2016		2017	
	Number	Per cent (b)	Number	Per cent (b)	Number	Per cent (b)
Average class size	25.4	.	25.6	.	25.6	.
All classes	4,247	.	4,233	.	4,206	.
All pupils	107,797	.	108,441	.	107,725	.
<u>Classes (30 pupils or less) (c)</u>						
Classes	4,001	94.2	3,978	94.0	3,930	93.4
Pupils	99,962	92.7	100,245	92.4	98,931	91.8
<u>Large Infant Classes (31 or more pupils) (d)</u>						
Classes	246	5.8	255	6.0	276	6.6
of which:						
Lawfully large classes						
with 'excepted' pupils (e)	222	5.2	241	5.7	249	5.9
Unlawfully large classes (f)	24	0.6	14	0.3	27	0.6
Pupils in large classes (g)	7,835	7.3	8,196	7.6	8,794	8.2
of which:						
Lawfully large classes						
with 'excepted' pupils (e)	7,040	6.5	7,706	7.1	7,907	7.3
Unlawfully large classes (f)	795	0.7	490	0.5	887	0.8

Source: School Census

(a) At January each year.

(b) Percentage of all classes/pupils.

(c) The Schools Standards and Framework Act 1998 and associated regulations placed a statutory duty on local authorities and governing bodies to limit the size of Reception classes to 30 from 1999; Reception and Year 1 classes from 2000 and Reception, Year 1 and Year 2 from 2001. Mixed year or mixed Key Stage classes are subject to the limit, where the majority of the class is made up of pupils in the appropriate year groups; this includes mixed nursery/reception classes. In this table, where a class has more than one teacher the number of pupils divided by the number of teachers determines if the size is over 30.

(d) Both infant and junior classes with one teacher are allowed to have more than 30 children in very specific circumstances. These are called exceptions. Exception categories for infant classes are defined in the Schedule to the Education (Infant Class Sizes) (Wales) Regulations 1998, as amended by the Education (Infant Class Sizes) (Wales) (Amendment) Regulations 2009. Exception categories for junior classes are not set out in regulations but are enforced as part of the data collection.

(e) Includes only those classes where there are pupils who have been admitted as exceptions making the class size within the legal limit of 30 pupils or less.

(f) Classes of 31 or more, excluding those large classes engaged in an excepted activity.

(g) Includes all pupils in large classes, including those with excepted activity.

## Junior (Table 16)

- 11.1 per cent of junior classes (590) were regarded as large classes and had a total of 18,914 pupils (13.7 per cent of all pupils). This is more than at January 2016 when 540 classes (10.2 per cent) were considered large and they had a total of 17,279 (12.7 per cent of all pupils).

**Table 16: Junior class sizes in primary and middle schools (a)**

	2015		2016		2017	
	Number	Per cent (b)	Number	Per cent (b)	Number	Per cent (b)
Average class size	25.2	.	25.6	.	25.9	.
All classes	5,277	.	5,319	.	5,331	.
All pupils	132,774	.	136,261	.	138,151	.
<u>Classes (30 pupils or less)</u>						
Classes	4,872	92.3	4,779	89.8	4,741	88.9
Pupils	119,845	90.3	118,982	87.3	119,237	86.3
<u>Large Junior Classes (31 or more pupils) (c)</u>						
Classes	405	7.7	540	10.2	590	11.1
of which:						
With 'excepted' pupils (d)	316	6.0	400	7.5	424	8.0
Without 'excepted' pupils (e)	89	1.7	140	2.6	166	3.1
Pupils in large classes (f)	12,929	9.7	17,279	12.7	18,914	13.7
of which:						
With 'excepted' pupils (d)	10,074	7.6	12,711	9.3	13,537	9.8
Without 'excepted' pupils (e)	2,855	2.2	4,568	3.4	5,377	3.9

Source: School Census

(a) At January each year.

(b) Percentage of all classes/pupils.

(c) Both infant and junior classes with one teacher are allowed to have more than 30 children in very specific circumstances. These are called exceptions. Exception categories for infant classes are defined in the Schedule to the Education (Infant Class Sizes) (Wales) Regulations 1998, as amended by the Education (Infant Class Sizes) (Wales) (Amendment) Regulations 2009. Exception categories for junior classes are not set out in regulations but are enforced as part of the data collection. In this table, where a class has more than one teacher the number of pupils divided by the number of teachers determines if the size is over 30.

(d) Includes only those classes where there are pupils who have been admitted as exceptions making the class size within the legal limit of 30 pupils or less.

(e) Classes of 31 or more, excluding those large classes engaged in an excepted activity.

(f) Includes all pupils in large classes, including those with excepted activity.

## Independent schools

Schools which charge fees and may also be financed by individuals, companies or charitable institutions. All independent schools in Wales have to register with the Welsh Government.

- There were 70 independent schools in January 2017, up from 66 in January 2016. ([Table 17](#))
- In the Independent sector 5.0 per cent of pupils had statements of SEN and a further 10.6 per cent of pupils had special needs but no statement. ([Table 18](#))
- 15.6 per cent of pupils at independent schools have some form of special educational need; 32.2 per cent of these pupils with SEN have statements of SEN. Of the pupils with statements of special educational needs, 39.8 per cent had behavioural, emotional and social difficulties as their major need and 26.1 per cent of pupils had autistic spectrum disorders as their major need. ([Table 18](#))

**Table 17: Independent schools, January 2017**

	Schools		Pupils		Qualified Teachers		Pupil-Teacher Ratio
	Number	Number	Full-time equivalent	Number	Full-time equivalent		
Isle of Anglesey	2	120	96.5	17	13.0	7.4	
Gwynedd	4	282	282.0	48	43.2	6.5	
Conwy	2	536	536.0	109	97.0	5.5	
Denbighshire	4	522	522.0	78	71.9	7.3	
Flintshire	3	51	51.0	13	11.7	4.4	
Wrexham	2	31	31.0	13	12.2	2.5	
Powys	6	512	512.0	64	61.3	8.4	
Ceredigion	0	.	.	.	.	.	
Pembrokeshire	6	335	335.0	51	46.4	7.2	
Carmarthenshire	6	772	772.0	100	89.6	8.6	
Swansea	6	388	373.5	62	49.3	7.6	
Neath Port Talbot	0	.	.	.	.	.	
Bridgend	2	270	270.0	42	40.7	6.6	
The Vale of Glamorgan	3	592	591.5	99	90.2	6.6	
Rhondda Cynon Taf	1	0	0.0	0	0.0	.	
Merthyr Tydfil	0	.	.	.	.	.	
Caerphilly	2	147	147.0	20	13.9	10.6	
Blaenau Gwent	0	.	.	.	.	.	
Torfaen	0	.	.	.	.	.	
Monmouthshire	5	1,437	1,427.5	198	184.2	7.8	
Newport	2	550	543.0	70	62.7	8.7	
Cardiff	14	2,836	2,836.0	316	270.5	10.5	
<b>Wales</b>	<b>70</b>	<b>9,381</b>	<b>9,326.0</b>	<b>1,300</b>	<b>1,157.7</b>	<b>8.1</b>	
Wales – January 2016	66	8,880	8,805.5	1,285	1,106.2	8.0	
Wales – January 2015	66	8,991	8,941.5	1,270	1,091.8	8.2	
Wales – January 2014	70	8,603	8,524.0	1,260	1,084.0	7.9	
Wales – January 2013	68	8,862	8,755.5	1,271	1,108.1	7.9	

Source: School Census

**Table 18: Pupils with special educational needs in independent schools by major need, January 2017**

	Number of pupils	Incidence % (a)
<b>Pupils with a statement of special educational need:</b>		
Attention Deficit Hyperactivity Disorder	11	0.1
Autistic Spectrum Disorders	123	1.3
Behavioural, Emotional & Social Difficulties	188	2.0
Dyscalculia	*	*
Dyslexia	40	0.4
Dyspraxia	*	*
General Learning Difficulties	6	0.1
Hearing Impairment	*	*
Moderate Learning Difficulties	40	0.4
Multi-Sensory Impairment	*	*
Physical & Medical Difficulties	5	0.1
Profound & Multiple Learning Difficulties	29	0.3
Speech, Language & Communications Difficulties	18	0.2
Severe Learning Difficulties	*	*
Visual Impairment	*	*
<b>Total</b>	<b>472</b>	<b>5.0</b>
Pupils with special educational needs but no statement	993	10.6

Source: School Census

(a) Incidence of pupils - the number of pupils expressed as a proportion of the total number of pupils on roll in Independent schools.

## Sickness absence of teachers

These figures are not included in the School Census. This information is collected directly from the local authorities in January each year. The data covers the sickness absence (including unpaid absence) of qualified and unqualified teachers with permanent contracts or contracts of more than 1 month, during the previous calendar year.

- 63 per cent of teachers took sickness absence during 2016, compared with 61 per cent during 2015.
- The average annual number of sick-days per teacher taking sickness absence was 11 days in 2016, unchanged on 2015.
- The total number of sick-days taken by teachers during 2016 was 188,094 – over 900 days more than during 2015.

**Table 19: Sickness absence of teachers in maintained schools, 1 January - 31 December (a) (b)**

		2012	2013	2014	2015	2016
Teachers taking a period of sickness absence (c):						
Full-time teachers:	Number	14,343	13,779	13,986	13,729 (r)	13,845
	Percentage	64	61	63	63 (r)	65
Part-time teachers:	Number	2,861	2,955	3,150	3,102 (r)	3,181
	Percentage	51	53	56	55 (r)	55
Total teachers:	Number	17,204	16,734	17,136	16,831 (r)	17,026
	Percentage	61	59	62	61 (r)	63
Average number of days lost due to sickness:						
per full-time teacher taking a period of sick leave		11	10	10	11	11
<i>per teacher (all full-time teachers)</i>		7	6	7	7	7
Average number of days lost due to sickness:						
per part time teacher taking a period of sick leave		11	12	11	12	11
<i>per teacher (all part-time teachers)</i>		6	6	6	7	6
Average number of days lost due to sickness:						
per teacher taking a period of sick leave		11	11	11	11	11
<i>per teacher (all teachers)</i>		7	6	7	7	7
Sickness absences by duration (in days):						
Full-time teachers:	5 days or less	52,020	44,666	45,852	43,499 (r)	45,327
	6 to 20 days	28,719	23,692	24,257	22,962 (r)	21,970
	more than 20 days	75,447	72,960	76,106	84,097 (r)	86,552
	Total (full-time)	156,186	141,318	146,215	150,557 (r)	153,848
Part-time teachers:	5 days or less	8,731	8,962	9,228	8,102 (r)	8,437
	6 to 20 days	5,772	5,634	5,456	5,629 (r)	5,210
	more than 20 days	16,688	21,420	20,486	22,869 (r)	20,598
	Total (part-time)	31,191	36,016	35,170	36,601 (r)	34,245
<b>Total</b>		<b>187,377</b>	<b>177,334</b>	<b>181,385</b>	<b>187,157 (r)</b>	<b>188,094</b>

Source: Local Authorities

(a) Sickness absence (including unpaid absence) of qualified and unqualified teachers with permanent contracts or contracts of more than 1 month.

(b) 2014 was the first year teacher numbers were not collected from the STATS3 return. The percentage of teachers taking a period of sickness absence has been calculated using PLASC data. Percentages in previous years have also been recalculated using PLASC data, including trainees on initial training courses. Link to previous data is attached:

[Teachers in service, vacancies and sickness absence.](#)

(c) Headcount, not full time equivalents.

(r) Data revised July 2017



## **Key quality information**

### **Coverage**

The census data in this release relates to all maintained and independent schools in Wales. The teacher sickness absence data relates to all maintained schools only.

### **Status**

Schools' data are derived from the Pupil Level Annual School Census (PLASC) returns and STATS 1 returns supplied by schools open on Census day in January each year. The returns are authorised by headteachers and validated by Local Authorities. The teacher sickness absence data is collected directly from the local authorities in January each year.

### **Timeliness**

The census data in this release relate to the position on Tuesday 10 January 2017. The teacher sickness absence data relates to the preceding calendar year.

### **Teacher sickness absence annual returns**

From 2016 the teacher sickness absence data collection form gives Local Authorities a chance to review data submitted for the previous calendar year. In built validations compare the new and previous year's data, this highlights any significant changes and provides Local Authorities the opportunity to revise data from the previous year if required.

Data for 2015 have been revised in this publication, as in many cases system developments have allowed this data to be captured more accurately and timely than in previous years. Where this data has been revised it will be clearly marked with an (r).

We follow the [Welsh Government's statistical revisions policy](#).

### **Source of data**

Pupil Level Annual School Census (PLASC) / School Census (STATS1 Return)

PLASC is an electronic collection of pupil and school level data provided by all maintained schools in January each year. Schools record data on pupils and the school throughout the year in their Management Information System (MIS) software. This data is collated into an electronic PLASC return and submitted to the Welsh Government through DEWI, a secure online data transfer system developed by the Welsh Government. Various stages of automated validation and sense-checking are built into the process to ensure a high quality of data to inform policy making and funding.

Independent schools in Wales complete a STATS1 return.

## Definitions

### Full-time equivalent (FTE):

- FTE pupil numbers count part-time pupils as 0.5.
- FTE of part-time teachers expresses the teachers' service in hours as a proportion of a school week: 32.5 hours for maintained schools and 26 hours for independent schools.

**Pupil Teacher Ratio (PTR):** calculated by dividing the FTE number of pupils by the FTE number of qualified teachers (head teachers, acting head teachers, assistant head teachers, deputy heads and other qualified teachers).

**Welsh medium schools:** for further information please see these [guidance notes](#)

**LA maintained schools:** Schools maintained by the local authorities. The authorities meet their expenditure partly from council tax and partly from general grants made by the Welsh Government.

**Rounding:** In tables where figures have been rounded to the nearest final digit there may be an apparent discrepancy between the sum of the constituent items and the total as shown.

**Symbols:** The following symbols have been used throughout the publication:

- .. not available
- . not applicable
- the data item is not exactly zero but less than 0.05
- \* figure is less than 5, or is based on a figure less than 5.

### Comparability: Other countries' releases

Here is the latest available data for:

#### England

[Schools-pupils-and-their-characteristics-January-2017](#)

[Education-and-training-statistics-for-the-UK-2016](#)

#### Scotland

[Education statistics](#)

#### Northern Ireland

[Education statistics](#)

### Related data for Wales

This release shows final data at Wales level for 2013 - 2017.

The previous census data published were for 2016, in the form of a Statistical First Release:

[School Census Results, 2016](#), published on 27 July 2016.

Claimant Count: data on the latest claimant count can be obtained by following this link:

[Claimant count by duration \(not seasonally adjusted\)](#)

## **Who are the key users of this data?**

These statistics are used both within and outside the Welsh Government. Some of the key users are:

- Ministers and the Members Research Service in the National Assembly for Wales;
- Education policy in the Welsh Government;
- Other areas of the Welsh Government;
- The research community;
- Students, academics and universities;
- Individual citizens and private companies.

## **What are the data used for?**

These statistics are used in a variety of ways. Some examples of these are:

- resource allocation in the Welsh Local Government Finance Settlement and the Pupil Deprivation Grant;
- advice to Ministers;
- the all-Wales education core data packs (the replacement for the National Pupil Database);
- local authority and school comparisons and benchmarks;
- to inform the education policy decision-making process in Wales including school reorganisation;
- to inform ESTYN during school inspections;
- the education domain of the Welsh Index of Multiple Deprivation;
- as a basis for National School Categorisation;
- published on My Local School;
- to assist in research in educational attainment.

## **National Statistics status**

The [United Kingdom Statistics Authority](#) has designated these statistics as National Statistics, in accordance with the Statistics and Registration Service Act 2007 and signifying compliance with the [Code of Practice for Official Statistics](#).

National Statistics status means that official statistics meet the highest standards of trustworthiness, quality and public value.

All official statistics should comply with all aspects of the Code of Practice for Official Statistics. They are awarded National Statistics status following an assessment by the UK Statistics Authority's regulatory arm. The Authority considers whether the statistics meet the highest standards of Code compliance, including the value they add to public decisions and debate.

It is Welsh Government's responsibility to maintain compliance with the standards expected of National Statistics. If we become concerned about whether these statistics are still meeting the appropriate standards, we will discuss any concerns with the Authority promptly. National Statistics status can be removed at any point when the highest standards are not maintained, and reinstated when standards are restored.

## **Well-being of Future Generations Act (WFG)**

The Well-being of Future Generations Act 2015 is about improving the social, economic, environmental and cultural well-being of Wales. The Act puts in place seven well-being goals for Wales. These are for a more equal, prosperous, resilient, healthier and globally responsible Wales, with cohesive communities and a vibrant culture and thriving Welsh language. Under section (10)(1) of the Act, the Welsh Ministers must (a) publish indicators ("national indicators") that must be applied for the purpose of measuring progress towards the achievement of the Well-being goals, and (b) lay a copy of the national indicators before the National Assembly. The 46 national indicators were laid in March 2016.

Information on indicators and associated technical information - [How do you measure a nation's progress? - National Indicators](#)

Further information on the [Well-being of Future Generations \(Wales\) Act 2015](#).

The statistics included in this release could also provide supporting narrative to the national indicators and be used by public services boards in relation to their local well-being assessments and local well-being plans.

## **Further details**

The document is available at:

<http://gov.wales/statistics-and-research/schools-census/?lang=en>

Further data underlying the tables in this release are available through [StatsWales](#).

## **Next update**

July 2018 (provisional)

Period covered: The census data will relate to the position on Tuesday 9 January 2018. The teacher sickness absence data will relate to the preceding calendar year.

## **We want your feedback**

We welcome any feedback on any aspect of these statistics which can be provided by email to [school.stats@gov.wales](mailto:school.stats@gov.wales)

## **Open Government Licence**

All content is available under the [Open Government Licence v3.0](#), except where otherwise stated.

