



Education & Skills  
Funding Agency

# Apprenticeship qualification achievement rates specification 2016 to 2017

Version 2

This document sets out how we will calculate apprenticeship qualification achievement rates in 2016 to 2017.

**January 2018**

Of interest to colleges, training organisations and employers.

## Contents

<b>Introduction and purpose of document</b>	<b>3</b>
<b>Understanding the terminology</b>	<b>3</b>
<b>Changes from version 1 of this document</b>	<b>3</b>
<b>Changes from the 2015 to 2016 document</b>	<b>3</b>
<b>About qualification achievement rates</b>	<b>4</b>
Purpose of qualification achievement rates	4
Apprenticeship QAR methodology	4
Apprenticeship business rules	5
Exclusions from apprenticeship QARs	5
<b>Processing standard files</b>	<b>9</b>
Process flow diagram	9
Identifying Apprenticeship programme aims	10
Processing further education college mergers	11
Processing learner reference number changes	11
Merging programme aims across years	12
Identifying overdue continuing aims and planned breaks	12
Qualification achievement rate calculations	14
Calculating the percentage of leavers below the minimum standards threshold	15
Further Information	16
<b>Contents of the qualification achievement rates dataset for records created from the ILR</b>	<b>17</b>
Source or derivation of fields in the qualification achievement rates dataset	17
<b>Contents of the qualification achievement rates dataset for records created from the LEOP dataset</b>	<b>25</b>
Source or derivation of fields in the qualification achievement rates dataset	25

## Introduction and purpose of document

1. This document provides technical information about how information provided in the Individualised Learner Record (ILR) and Large Employer Outcome Pilot (LEOP) data collections are processed to produce the qualification achievement rates (QAR) dataset.
2. This dataset produces the apprenticeship 2016 to 2017 QAR and minimum standards dashboard. This document also provides information about how we generate the information in the QAR and minimum standards dashboard.
3. Unless otherwise stated, apprenticeship frameworks and standards in this document will be referred to as an 'apprenticeship'.

## Understanding the terminology

4. The terms 'we' and 'ESFA' refer to the 'Education and Skills Funding Agency' and associated staff.
5. When we refer to 'you' or 'providers', this includes colleges, training organisations, local authorities and employers that receive funding from us, or Advanced Learner Loans (loans) payments from the Student Loans Company (SLC) on behalf of learners, to deliver education and training.

## Changes from version 1 of this document

6. We have made the following changes:
  - a. clarified where we refer to apprenticeship standards that we refer to those recorded under the trailblazer pilot under Funding model 81.
  - b. paragraph 21 (the exclusions table):
    - i. added Withdrawal Reason 41 (Transfer to another provider to undertake learning that meets a specific government strategy)
    - ii. added trailblazer standards with no net payments to the section on apprenticeships that we do not fund
    - iii. added an SILR exclusion
  - c. paragraphs 59 and 60 (the contents tables):
    - i. **added** these fields: FreeMeals and App\_Stand\_NoNetPay\_Excl
    - ii. **removed** these fields as they are not included in the final dataset: D\_TOTAL PAYMENT, LearnRefNum Orig, LearnerRefNumberAnon, Planned Break Overall Exc, Planned break timely exc, Prv\_Group, Transfer Overall Exc and UKPRN\_Orig.

## Changes from the 2015 to 2016 document

7. We have made these changes to the QAR dataset:
  - included apprenticeship trailblazer pilot standards recorded under Funding model 81 ('trailblazer pilot standards'). Note all apprenticeships recorded under Funding model 36 ('Apprenticeships (from 1 May 2017)') are excluded from the QAR calculations; these will be included in 2017 to 2018 calculations.
  - excluded apprenticeship seasonal worker pilot learning aims, identified using Learning Delivery Monitoring code 348

8. The rules for adding aims from the 2016 to 2017 ILR files have been included.
9. The changes made to the QAR dataset are listed below.

#### **Fields whose derivations have changed**

<b>Field name</b>	<b>Reason for change</b>
Pilot_Excl	This variable will exclude the apprenticeship seasonal worker pilot learning aims.
Fund_Qual_Excl	This derivation has changed to exclude trailblazer pilot standards when calculating funding qualifying period

#### **Removed fields**

<b>Field name</b>	<b>Reason for change</b>
App_Stand_Excl	Apprenticeship trailblazer pilot standards are now included in the dataset

## **About qualification achievement rates**

### **Purpose of qualification achievement rates**

10. The apprenticeship QAR is a measure of the quality of the apprenticeship programmes that a provider delivered in a particular funding year. QARs are used to identify provision that falls below the minimum quality standards. Provision which falls below the minimum quality standards is one of the factors identified in [New Challenges New Chances](#) that prompts us to take action under our [Approach to Intervention process](#).
11. QARs are used in the National Achievement Rate Tables to show apprentices and employers the relative quality of provision. The Office for Standards in Education, Children's Services and Skills (Ofsted) also use them as part of their inspection process.

### **Apprenticeship QAR methodology**

12. The apprenticeship QAR methodology has two qualification achievement rate measures – the 'overall' QAR and the 'timely' QAR.
13. We use the overall QAR to formally assess whether a provider meets the minimum quality standards.
14. The overall QAR is based on the hybrid end year. The hybrid end year is either of:
  - the reporting year for overdue continuing learning aims and overdue planned breaks
  - the later of the actual end year or the planned end year of an apprenticeship. The apprenticeships included in the 2016 to 2017 overall QAR are those with a hybrid end year of 2016 to 2017.

15. The timely QAR is based on the planned end year of an apprenticeship. The apprenticeships considered for the 2016 to 2017 timely QAR measure are those with a planned end date in the funding year ending 31 July 2017. In timely QARs an apprenticeship is counted as achieved if the date of achievement is:
- on or before the planned end date; or
  - no more than 90 days after the planned end date.
16. There can be a delay between an apprenticeship being completed and the notification that the apprenticeship has been achieved. To ensure all achievements are included to account for this delay, we use information from the 2017 to 2018 R04 ILR to identify that have been achieved but which could not be recorded in the final return of the 2016 to 2017 ILR. For the timely achievement rate, the apprenticeship must have been achieved no more than 90 days after their planned end date.

### Apprenticeship business rules

17. We produce the [business rules](#) that describe how the QAR will be calculated, and which apprenticeships will not be included in the QAR calculations.
18. Some apprenticeships are not included the QARs to ensure the results are more credible and appropriate. The reasons include:
- if QARs are affected by circumstances beyond your control it would be unfair to include them.
  - the apprenticeship is not funded by us
  - the apprenticeship is an Access to Apprenticeship and the learner is not employed

### Exclusions from apprenticeship QARs

19. We produce a file for you that contains the apprenticeships that are not included in the calculations. This file shows the reason why they were not included. The table below describes the scenarios where we exclude apprenticeships. The definition of the derived variables below can be found in the [ILR standard file specifications and reference data document](#).
20. All apprenticeship starts from 1 May 2017 recorded under the new funding model (Funding model 36 'Apprenticeships (from 1 May 2017)') are excluded from the QAR calculations; these will be included in 2017 to 2018 calculations.

Description	Rules for identifying the excluded apprenticeship
An apprentice has transferred to a new provider because of intervention from us.	<p>For ILR files for 2012 to 2013, programme aims where <b>P_Prog_Status</b> is 10 (Learner has transferred to a new provider forced by ESFA intervention) and <b>Withdrawal Reason</b> is not 41 (Transfer to another provider to undertake learning that meets a specific government strategy).</p> <p>For ILR files for 2013 to 2014, programme aims where <b>P_ProgStatus</b> is 10 (Learner has transferred to a new provider forced by ESFA intervention) and <b>Withdrawal Reason</b> is not 41 (Transfer to another provider to undertake learning that meets a specific government strategy).</p>

Description	Rules for identifying the excluded apprenticeship
	<p>For ILR files for 2014 to 2015 onwards, programme aims where <b>D_SuccessRateStatus</b> is 10 (Learner has transferred to a new provider forced by ESFA intervention or to support a specific government strategy) and <b>Withdrawal Reason</b> is not 41 (Transfer to another provider to undertake learning that meets a specific government strategy).</p>
<p>For the overall QAR, where an apprentice has transferred to a different programme with the same provider.</p>	<p>For ILR files for 2012 to 2013, programme aims where <b>P_Prog_Status</b> is 8 (Learner has transferred to a new programme at the same provider) and the <b>Learning Actual End Date</b> (A31) is before 1 August of the relevant year.</p> <p>For ILR files for 2013 to 2014, programme aims where <b>P_ProgStatus</b> is 8 (Learner has transferred to a new programme at the same provider) and the <b>Learning Actual End Date</b> (A31) is before 1 August of the relevant year.</p> <p>For ILR files for 2014 to 2015 onwards, programme aims where <b>D_SuccessRateStatus</b> is 8 (Learner has transferred to a new programme at the same provider) and the <b>Learning Actual End Date</b> (A31) is before 1 August of the relevant year.</p>
<p>For the timely QAR, where an apprentice has transferred to a different programme with the same provider before the planned end date or no more than 90 days after.</p>	<p>For ILR files for 2012 to 2013, programme aims where <b>P_Prog_Status</b> is 8 (Learner has transferred to a new programme at the same provider) and the <b>Learning Actual End Date</b> (A31) is on or before the <b>Learning Planned End Date</b> (A28), or no more than 90 days after it.</p> <p>For ILR files for 2013 to 2014, programme aims where <b>P_ProgStatus</b> is 8 (Learner has transferred to a new programme at the same provider) and the <b>Learning Actual End Date</b> (A31) is on or before the <b>Learning Planned End Date</b> (A28), or no more than 90 days after it.</p> <p>For ILR files for 2014 to 2015 onwards, programme aims where <b>D_SuccessRateStatus</b> is 8 (Learner has transferred to a new programme at the same provider) and the <b>Learning Actual End Date</b> (A31) is on or before the <b>Learning Planned End Date</b> (A28), or no more than 90 days after it.</p>
<p>For the overall QAR, where an apprentice has temporarily withdrawn from the apprenticeship due to an agreed break in learning.</p>	<p>For ILR files for 2012 to 2013, programme aims where <b>P_Prog_Status</b> is 11 or 12 (Learner is taking a planned break from learning <b>OR</b> NVQ achieved but learner is now taking a planned break from learning on the framework).</p> <p>For ILR files for 2013 to 2014, programme aims where <b>P_ProgStatus</b> is 11 or 12 (Learner is taking a planned break from learning <b>OR</b> NVQ achieved but learner is now taking a planned break from learning on the framework).</p> <p>For ILR files for 2014 to 2015 onwards, programme aims where <b>D_SuccessRateStatus</b> is 11 (Learner is taking a planned break from learning).</p> <p>Under certain circumstances programme aims where the learner has temporarily withdrawn from the aim due to an agreed break in learning are not excluded. See paragraphs 38 to 43.</p>

Description	Rules for identifying the excluded apprenticeship
<p>For the timely QAR where an apprentice has temporarily withdrawn from the apprenticeship due to an agreed break in learning before the planned end date or no more than 90 days after it.</p>	<p>For ILR files for 2012 to 2013, programme aims where (<b>P_Prog_Status</b>) is 11 or 12 (Learner is taking a planned break from learning <b>OR</b> NVQ achieved but learner is now taking a planned break from learning on the framework) and the <b>Learning Actual End Date</b> is on or before the <b>Learning Planned End Date</b> or no more than 90 days after it.</p> <p>For ILR files for 2013 to 2014, programme aims where (<b>P_ProgStatus</b>) is 11 or 12 (Learner is taking a planned break from learning <b>OR</b> NVQ achieved but learner is now taking a planned break from learning on the framework) and the <b>Learning Actual End Date</b> is on or before the <b>Learning Planned End Date</b> or no more than 90 days after it.</p> <p>For ILR files for 2014 to 2015 onwards, programme aims where (<b>D_SuccessRateStatus</b>) is 11 (Learner is taking a planned break from learning).and the <b>Learning Actual End Date</b> is on or before the <b>Learning Planned End Date</b> or no more than 90 days after it.</p>
<p>Apprenticeships where the learner has withdrawn from the apprenticeship within the funding qualifying period, and the learning aim is not achieved.</p> <p>This only applies to apprenticeship frameworks only and does not apply to trailblazer pilot standards</p>	<p>Programme aims where:</p> <ul style="list-style-type: none"> <li>the planned duration is 168 days or more</li> <li>the actual duration is less than 42 days; and</li> <li>the <b>Completion Status</b> is 3 (Withdrawal)</li> </ul> <p>Programme aims where:</p> <ul style="list-style-type: none"> <li>the planned duration is between 14 and 167 days</li> <li>the actual duration is less than 14 days; and</li> <li>the <b>Completion Status</b> is 3 (Withdrawal)</li> </ul> <p>The planned duration of the aim, in days, is the difference between the <b>Learning Start Date</b> and the <b>Learning Planned End Date</b>.</p> <p>The actual duration of the aim, in days, is the difference between the <b>Learning Start Date</b> and the <b>Learning Actual End Date</b>.</p>
<p>Apprenticeships with a planned end date after the last day of the QAR reporting period (31 July 2017).</p>	<p>Programme aims where the <b>Learning Planned End Date</b> is later than 31 July 2017.</p>
<p>Classroom learning provision reported through the employer responsive funding stream.</p>	<p>Programme aims where any of the <b>Learning Delivery Monitoring Code</b> is 125 (Non-workplace learning in employer responsive funding model).</p>
<p>Apprenticeships which are not funded by us.</p>	<p>Programme aims where the <b>Funding Model</b> is equal to 99 (No ESFA funding) in all years.</p> <p>We will exclude all trailblazer pilot standards where the apprentice withdraws without a net employer contribution payment being recorded (i.e. any payments minus refunds). This is calculated for programme aims, where the Funding model is 81 and the sum of all payment records is greater than zero.</p>

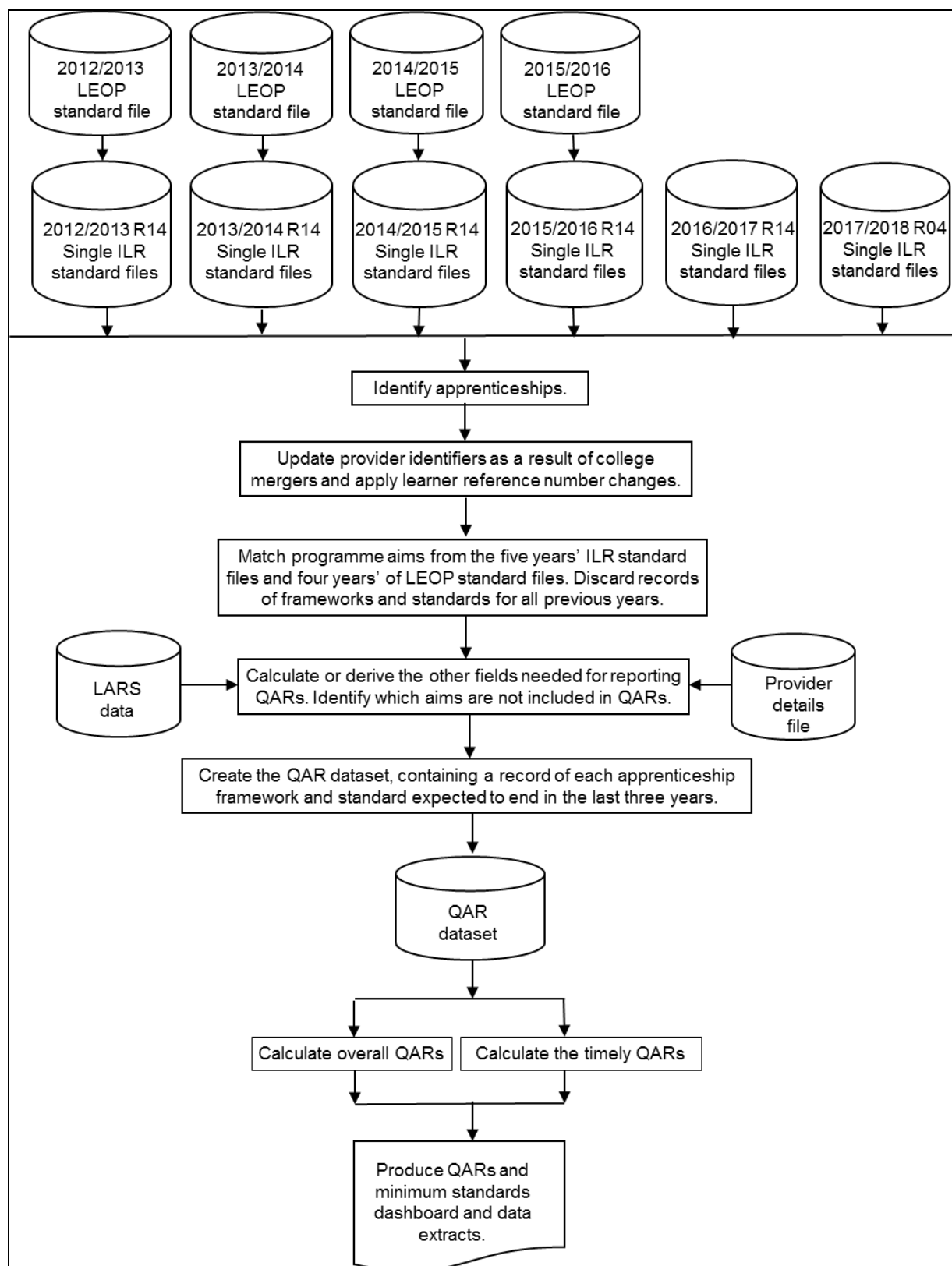
Description	Rules for identifying the excluded apprenticeship
<p>Changes to records previously submitted 2 or more years ago.</p> <p>The example given is for apprenticeships reported in 2015 to 2016. The exclusion also applies to apprenticeships reported in 2014 to 2015 or 2013 to 2014 that meet the same conditions for the corresponding earlier years.</p>	<p>For apprenticeships reported in the 2015 to 2016 ILR, that were previously reported in the 2013 to 2014 ILR or earlier, and not reported in the 2014 to 2015 ILR. Where</p> <ul style="list-style-type: none"> <li>the actual or planned end dates are not in 2015 to 2016 or later</li> <li>the apprenticeship was first reported complete in the 2015 to 2016 ILR</li> </ul> <p>The record is not an update to an apprenticeship that would otherwise have been an overdue planned break counted in the 2015 to 2016 hybrid end year.</p> <p>This applies only to 2015 to 2016 and previous years.</p>
<p>SILR exclusion</p>	<p>Aims where the <a href="#">FE and Skills Statistical First Release</a> corporate definition does not define the aim as an Apprenticeship Programme aim.</p>



## Processing standard files

### Process flow diagram

21. This flow diagram below shows how ILR and LEOP information for multiple funding years is processed to produce the QAR dataset, which is the source of the information used for the QAR and minimum standards dashboard.



## Identifying Apprenticeship programme aims

22. The method for identifying apprenticeship programme aims for each funding year in the ILR and LEOP datasets is set out in the following table.

Source and year	Rules for identifying Apprenticeship programme aims
ILR for 2012 to 2013	Programme aims where: <ul style="list-style-type: none"> <li>the <b>Aim Type</b> is 1 (Programme aim); and</li> <li>the <b>Programme Type</b> (A15) is 2, 3, 10, 20 or 21 (Advanced level apprenticeship, Intermediate Level Apprenticeship, Higher Apprenticeship, Higher Apprenticeship - level 4, Higher Apprenticeship - level 5 respectively).</li> </ul>
ILR for 2013 to 2014 onwards	Programme aims where: <ul style="list-style-type: none"> <li>the <b>Aim Type</b> is 1 (Programme aim); and</li> <li>the <b>Programme Type</b> (A15) is 2, 3, 10, 20, 21, 22, 23 or 25 (Advanced level apprenticeship, Intermediate Level Apprenticeship, Higher Apprenticeship, Higher Apprenticeship - level 4, Higher Apprenticeship - level 5, Higher Apprenticeship – level 6, Higher Apprenticeship – level 7+, Apprenticeship standard respectively).</li> </ul>
LEOP for 2012 to 2013	Programme aims where: <ul style="list-style-type: none"> <li>the <b>Aim Type</b> is 1 (Programme aim); and</li> <li>the <b>Programme Type</b> is 2, 3, 10, 20 or 21 (Advanced level apprenticeship, Intermediate Level Apprenticeship, Higher Apprenticeship, Higher Apprenticeship - level 4, Higher Apprenticeship - level 5 respectively).</li> </ul>
LEOP for 2013 to 2014 and 2014 to 2015	Programme aims where: <ul style="list-style-type: none"> <li>the <b>Aim Type</b> is 1 (Programme aim); and</li> <li>the <b>Programme Type</b> is 2, 3, 10, 20, 21, 22, 23 or 25 (Advanced level apprenticeship, Intermediate Level Apprenticeship, Higher Apprenticeship, Higher Apprenticeship - level 4, Higher Apprenticeship - level 5, Higher Apprenticeship – level 6, Higher Apprenticeship – level 7+, Apprenticeship standard respectively).</li> </ul>

23. We use the main aims or component aims of an apprenticeship programme to determine whether the competency aim is subcontracted. This information is added to the programme aim, although the component aims of the apprenticeship programme are not included in the achievement rates dataset.

24. We identify the main assessment learning aim or the component aims of an apprenticeship for each funding year in the ILR dataset using the following rules:

Source and year	Rules for identifying apprenticeship main assessment or component aims
ILR for 2012 to 2013	Aims where: <ul style="list-style-type: none"> <li>the <b>Aim Type</b> is 2 (main learning aim); and</li> <li>the <b>Programme Type</b> (A15) is 2, 3, 10, 20 or 21 (Advanced level apprenticeship, Intermediate Level Apprenticeship, Higher Apprenticeship, Higher Apprenticeship - level 4, Higher Apprenticeship - level 5 respectively).</li> </ul>

Source and year	Rules for identifying apprenticeship main assessment or component aims
ILR for 2013 to 2014 onwards	<p>Aims where:</p> <ul style="list-style-type: none"> <li>the <b>Aim Type</b> is 3 (component aim); and</li> <li>the <b>Programme Type</b> (A15) is 2, 3, 10, 20, 21, 22 23, or 25 (Advanced level apprenticeship, Intermediate Level Apprenticeship, Higher Apprenticeship, Higher Apprenticeship - level 4, Higher Apprenticeship - level 5, Higher Apprenticeship – level 6, Higher Apprenticeship – level 7+, Apprenticeship standard respectively).</li> </ul>

### Processing further education college mergers

25. For Further Education college mergers that took place up to and including 31 July 2017, the ILR learning aims from any pre-merger UKPRNs will be combined and the QAR for the 2016 to 2017 reporting year will be produced for the post-merger UKPRN. Where the Further Education college merger took place on or after 01 August 2017, this falls in the new funding year, therefore the QAR for the 2016 to 2017 reporting year will be produced under the pre-merger UKPRNs.
26. Programme aims are combined by changing the merged college's provider number (UKPRN) to the new college's provider number. The original provider number is kept in the QAR dataset in the UKPRN\_orig field.
27. This merger process only applies to colleges. It does not apply to the mergers of any other types of provider (for example, private training providers).

### Processing learner reference number changes

28. We use the learner reference number to match programme aims across years. The learner reference number is assigned by providers, and providers (or their software) will occasionally change them, either within a funding year or between years.
29. If the learner reference number is changed, the process of matching programme aims does not work correctly and two records are created in the QAR dataset for the same programme aim – one using the old learner reference number and one the new learner reference number. As the programme aim from the earlier year's ILR file will not have any achievement data, it will reduce your QAR unless we can match the references; either through:
  - a. The learner reference number mapping spreadsheet which allowed you to provide a cross reference mapping from the old and new learner reference numbers for ILR records from 2012 to 2013 or earlier.
  - b. The 'Learner reference in the previous year' field in the ILR. In 2013 to 2014 we replaced the interim solution above and developed the ILR to include this field to enable matching between years. This is now used for the process of learner mapping. This field must be cleared between years as specified in the [ILR specification](#) otherwise the learners will not be correctly matched.
30. The information in the learner reference number mapping spreadsheet and the 'Learner reference in the previous year' field is used to change the learner reference numbers for previous years to the latest learner reference number. The original learner reference number is kept in the QAR dataset in the LearnRefNumber\_orig field.

## **Merging programme aims across years**

31. Many apprenticeship programmes take more than one year to complete meaning that the same programme aim for an apprentice can appear in more than one ILR or LEOP file.
32. As apprenticeship QARs are based on the programme aim's planned end date, we merge the ILR and LEOP files from all years to identify all the programme aims that are planned to be completed in the years being reported on.
33. The ILR and LEOP files for a funding year are combined into a single file before the yearly files are merged.
34. We use various combinations of variables to ensure that the correct programme aims are matched. The Provider Number, Learner Reference Number, Programme Type and Framework Code or the Standard Code are matched together with the following combinations, in the following sequence.
  - Learning Start Date, Learning Planned End Date and Learning Actual End Date
  - Learning Start Date and Learning Planned End Date
  - Learning Start Date and Learning Actual End Date
  - Learning Start Date

Pathway Code is not included in this combination.

35. A final match of Provider Number, Learner Reference Number, Programme Type and Framework Code or Standard Code is made when matching data to 2013 to 2014 from previous years.
36. When matching between ILR data files for each year from 2013 to 2014 up to 2016 to 2017, the final match is Provider Number, Learner Reference Number, Programme Type, Framework Code or Standard Code and Learning Start Date.
37. Once programme aim records have been matched, those from previous years are discarded, leaving just the latest information of the programme aim in the QAR dataset.

## **Identifying overdue continuing aims and planned breaks**

38. Continuing learning aims (aims with a completion status of 1 'The learner is continuing or intending to continue the learning activities leading to the learning aim') in the R14 ILR return for a funding year, that do not have a corresponding record in the following funding year, are treated as a withdrawal for the overall methodology.

For example, if the year the record was submitted on the ILR is '2015/2016' and there is no corresponding record in 2016 to 2017 R14 ILR return.

- the hybrid end year (P\_Hybridendyr) is set to 2016; and
- P\_Count\_Overall is set to 1; and
- P\_Ach\_Overall is set to 0.

39. Aims where the learner is on a planned break (Aims with a completion status of 6 'Learner has temporarily withdrawn from the aim due to an agreed break in learning'), are treated as a withdrawal for the overall methodology where:
- they do not have a corresponding restart record in the same funding year; or
  - they do not have a corresponding restart record in the following funding year; or
  - if the planned break was recorded in the ILR R14 return for funding year 2015 to 2016, they do not have a corresponding restart record in the R04 ILR return of the funding year 2017 to 2018.
40. An ILR record is a restart record if it has a Learning Delivery Funding and Monitoring Type of 'RES' with a Learning Delivery Funding and Monitoring Code of 1 (Learning aim restarted).
41. We match restart records to planned break records by matching on UKPRN, Learner Reference Number, Programme Type and Framework or Standard Code where the original learning start date on the restart record matches the learning start date or original learning start date of the planned break record; this allows for situations where the planned break was itself a restart. For planned breaks which had an actual end date before 1 August 2013, only the UKPRN, Learner Reference Number and Programme Type and Framework or Standard Code need to match.
42. For example, an aim where the learner is on a planned break, that is submitted in the 2014 to 2015 ILR (YearAimSubmitted is '2014/15'), has a corresponding restart record if:
- the UKPRN, Learner Reference Number, Learning Aim Reference Number Programme type and Framework or Standard Code on the planned break record is the same as the UKPRN, Learner Reference Number, Programme type and Framework or Standard Code on a restart record; and
  - either the Learning Start Date or the original Learning Start Date on the planned break record is the same as the original Learning Start Date on the restart record; and
  - the restart record was submitted in the 2014 to 2015, 2015 to 2016 or 2016 or 2017 ILR (YearAimSubmitted is '2014/15', '2015/16' or '2016/17')
43. Where an aim where the learner is on a planned break that is submitted in the 2014 to 2015 ILR (YearAimSubmitted is '2014/15'), does not have a corresponding restart record:
- the reporting year is set to one year after the later of the expected end year or actual end year; and
  - P\_Count\_Overall is set to 1; and
  - P\_Ach\_Overall is set to 0.

44. An aim where the learner is on a planned break, that is submitted in the 2015 to 2016 ILR (YearAimSubmitted is '2015/16'), has a corresponding restart record if:
- the UKPRN, learner reference number, Programme Type and Framework or Standard Code on the planned break record is the same as the UKPRN, learner reference number, Programme Type and Framework or Standard Code on a restart record; and
  - either the learning start date or the original learning start date on the planned break record is the same as the original learning start date on the restart record; and
  - the restart record was submitted in the 2015 to 2016, 2016 to 2017 or 2017 to 2018 R04 ILR (YearAimSubmitted is '2015/16', '2016/17' or '2017/18')
45. Where an aim where the learner is on a planned break that is submitted in the 2015 to 2016 ILR (YearAimSubmitted is '2015/16'), does not have a corresponding restart record:
- the reporting year is set to one year after the later of the expected end year or actual end year; and
  - P\_Count\_Overall is set to 1; and
  - P\_Ach\_Overall is set to 0.

### **Qualification achievement rate calculations**

46. We use the following fields from the QAR dataset to calculate the overall QARs.

- Hybrid End Year (P\_Hybridendyr).  
This field is the later of the actual learning end year (P\_Actendyr), the expected learning end year (P\_Expendyr), or the reporting year.
- P\_Count\_Overall  
This field is used in the overall QAR calculation and indicates whether the programme aim has ended (a programme aim has ended if a learning actual end date is present), or it is an overdue continuing learning aim or an overdue continuing planned break. Programme aims where P\_Count\_Overall is 1 are included in the overall QAR calculations.
- P\_Ach\_Overall  
This field is used in the overall QAR calculation and indicates whether a programme aim has been achieved (achieved learning aims have an Outcome of 1(Achieved)).

47. For a given funding, year the overall QAR percentage is:

$$\frac{\text{Number of programmes that have been achieved}}{\text{Number of programmes that have ended}} \times 100$$

48. For a given hybrid end year (P\_Hybridendyr) the overall QAR percentage is:

$$\frac{\text{Number of programme aims where P_Ach_Overall is 1}}{\text{Number of programme aims where P_Count_Overall is 1}} \times 100$$

49. The main fields from the QAR dataset that are used in calculating the timely QAR are as follows.

- Expected End Year (P\_Expendyr)

This field is the first calendar year of the funding period the Learning Planned End Date (A28) falls in. For example, if the Learning Planned End Date falls within the 2016 to 2017 funding year, P\_Expendyr is '2016'.

- P\_Count\_Timely

This field is used in the timely QAR calculation and indicates whether the programme aim was expected to be completed in a particular funding year. Programme aims where P\_Count\_Timely is 1 are included in the timely QAR calculations.

- P\_Ach\_Timely

This field is used in the timely QAR calculation and indicates whether a programme aim has been achieved.

50. For a given funding year the timely QAR percentage is:

$$\frac{\text{Number of programmes that have been achieved by their planned end date or no more than 90 days after it}}{\text{Number of programmes expected to be completed}} \times 100$$

51. For a given expected end year (P\_Expendyr) the timely QAR percentage is calculated as follows.

$$\frac{\text{Number of programme aims where P_Ach_Timely is 1}}{\text{Number of programme aims where P_Count_Timely is 1}} \times 100$$

### **Calculating the percentage of leavers below the minimum standards threshold**

52. Minimum standards use the overall QAR and uses data for hybrid end year 2016/2017 only. The first stage in calculating the percentage of provision that is below minimum standards is to identify whether the all age overall QAR for the apprenticeship level of an apprenticeship is below the minimum standards threshold. For 2016 to 2017 this threshold is 62% for all apprenticeship levels.

53. If the all age overall QAR of the apprenticeship level of an apprenticeship is below the minimum standard threshold, all the programme aims for that and apprenticeship level are classified as being below the minimum standards threshold.

54. The programme aims below the minimum standard threshold are then added together for all apprenticeship and apprenticeship levels to give a figure for the total number of programme aims below the minimum standards threshold for the provider.

55. The percentage of programme aims below the minimum standard threshold is:

$$\frac{\text{The total number of programme aims below the minimum standard threshold}}{\text{The total number of learning aims where P_Count_Overall is 1}} \times 100$$

56. The percentage of programme aims below the minimum standard threshold is then compared to the minimum standards tolerance level, which is 40%.
57. If the percentage of programme aims below the minimum standard threshold is equal to or greater than the minimum standards tolerance, your apprenticeship provision is below minimum standards and there may be formal intervention by us, as set out in the [Approach to Intervention process](#).

#### **Further Information**

58. If you need more information you can phone the service desk on 0370 267 0001 or email [sde.servicedesk@education.gov.uk](mailto:sde.servicedesk@education.gov.uk). Please provide a detailed explanation of your query.



## Contents of the qualification achievement rates dataset for records created from the ILR

### Source or derivation of fields in the qualification achievement rates dataset

59. The five reference files used in some of the derivations are as follows.

- a) The 2016/2017 Framework lookup file – this file holds programme aim information from the Learning Aims Reference System (LARS) and the Learning Aims Reference Application (LARA), as at the ‘hard close’ of the 2016 to 2017 ILR (19 October 2017).
- b) The 2016/2017 Standard lookup file – this file holds programme aim information from the Learning Aims Reference System (LARS) at the ‘hard close’ of the 2016 to 2017 ILR (19 October 2017).
- c) The 2016/2017 Provider Details file – this file holds providers’ details from the Provider and Organisation Information Management System (PIMS), as at 31 July 2017.
- d) The 2016/17 Funded Provider Details file – this file holds details of providers who received funding for the funding year.
- e) The look up used to determine the delivery region and delivery local authority of a delivery location postcode will be obtained from the National Statistics Postcode Lookup (UK) May 2017. This will be available to download from the Office of National Statistics website.

Data item	Description	Data values	Source (ILR)	Derivation
Age_Band	A banding of the age on the start of the apprenticeship programme.	1 = 16 to 18 2 = 19 to 23 3 = 24 or more	Derived	Set to 1 if <b>D_AgeAimStart</b> is 0 to 18. Set to 2 if <b>D_AgeAimStart</b> is 19 to 23. Set to 3 if <b>D_AgeAimStart</b> or 24 or greater, or unknown.
App_Stand_NoNetPay_Excl	Indicates that the learner on a trailblazer standard has withdrawn without a net employer contribution payment being recorded.	0 or 1	Derived	Set to 1 if the <b>Programme Type</b> is 25, the <b>Funding Model</b> is 81, and the sum of the <b>Payment Records</b> in the ILR Apprenticeship Financial Record entity is zero.  Otherwise set to 0.
ClassLearn_Excl	Indicates that the programme aim is a classroom learning aim reported through the employer responsive funding stream. Classroom learning aims reported through the employer responsive funding stream are not included in QARs.		Derived	For ILR files 2012 to 2013, set to 1 if the <b>Programme Type</b> is 2, 3, 10, 20 or 21 and there is a <b>Learning Delivery Funding and Monitoring Type</b> of ‘LDM’ with a <b>Learning Delivery Funding and Monitoring Code</b> of 125 (Non-workplace learning in employer responsive funding model).

Data item	Description	Data values	Source (ILR)	Derivation
				For ILR files for 2013 to 2014 onwards, set to 1 if the <b>Programme Type</b> is 2, 3, 10, 20, 21; 22, 23 or 25 and there is a <b>Learning Delivery Funding and Monitoring Type</b> of 'LDM' with a <b>Learning Delivery Funding and Monitoring Code</b> of 125 (Non-workplace learning in employer responsive funding model).  Otherwise set to 0.
CompStatus	The completion status of the programme aim.		ILR standard files	Set to <b>Completion Status</b> .
D_AchieveRateStatus	The status of the learning aim for calculating QARs.		ILR standard files / Derived	For ILR files for 2012 to 2013, set to the value of the ILR derived variable <b>P_Prog_Status</b> .  For ILR files for 2013 to 2014, set to the value of the ILR derived variable <b>P_ProgStatus</b> .  For ILR files for 2014 to 2015 onwards, set to the value of the ILR derived variable <b>D_SuccessRateStatus</b> .
D_AgeAimStart	The age of the apprentice on the start date of the programme aim.		ILR standard files	For ILR files 2012 to 2013, set to the value of the ILR derived variable <b>A_Agest</b> .  For ILR files for 2013 to 2014 onwards, set to the value of the ILR derived variable <b>D_AgeAimStart</b> .
Datasource	The source of the record on the QARs dataset, which is either the ILR or the LEOP dataset.	ILR	Derived	Set to 'ILR'.
DelLocPostCode	The postcode of the delivery location.		ILR standard files	Set to <b>Delivery Location Postcode</b> .
DelLocPostCode_GOR	The delivery location postcode Government office region.		Postcode lookup	Obtained from the National Statistics Postcode Lookup (UK) May 2017.
DelLocPostCode_LocalAuthority	The delivery location postcode local authority district.		Postcode lookup	Obtained from the National Statistics Postcode Lookup (UK) May 2017.
Ethnicity	The apprentice's ethnic background.		ILR standard files	Set to <b>Ethnicity</b> .
FreeMeals	Indicates that the learner is eligible for free meals, or is eligible and receiving free meals. 19+ learners are not eligible for free meals.		Derived	For ILR files for 2013 to 2014, set to -1.  For ILR files for 2014 to 2015 onwards if the <b>Learner Funding and Monitoring Type</b> is 'FME' and the <b>Learner Funding and Monitoring Code</b> is 1 or 2 (14-15-year-old learner is eligible for free meals <b>OR</b> 16-19-year-old learner is eligible for and in receipt of free meals, set to the <b>Learner Funding and Monitoring Code</b> , otherwise set to -1.

Data item	Description	Data values	Source (ILR)	Derivation
Fund_Qual_Excl	Indicates that the learner has withdrawn from a learning aim before the qualifying number of days for funding has been met.  (The qualifying period for funding aims with a planned duration of less than 14 days is 1 day. Fund_Qual_Excl is always set to 0 for aims with a planned duration of less than 14 days) This applies only to apprenticeship frameworks	0 or 1	Derived	The planned duration of the aim, in days, is the difference between the <b>Learning Start Date</b> and the <b>Learning Planned End Date</b> .  The actual duration of the aim, in days is the difference between the <b>Learning Start Date</b> and the <b>Learning Actual End Date</b> .  Set to 1 if the planned duration is 168 days or more, the actual duration is less than 42 days and the <b>Completion Status</b> is 3 (Withdrawal).  Set to 1 If the planned duration is between 14 and 167 days, the actual duration is less than 14 days and the <b>Completion Status</b> is 3 (Withdrawal).  Otherwise set to 0.
FworkCode	Framework code.		ILR standard files	Set to <b>Framework Code</b> .
FworkName	Framework name.		Derived	Set to <b>FworkName</b> from the framework lookup.
L_PriorPcode	The apprentice's home postcode.		ILR standard files	Set to <b>Postcode</b> where <b>Locator Type</b> is 2 (Postcode) and <b>Contact Type</b> is 1 (Prior to enrolment (the permanent or home postcode of the learner prior to enrolling at the provider)).
L_PriorPcode_GOR	The apprentice's home postcode Government office region.		Postcode lookup	Obtained from the National Statistics Postcode Lookup (UK) May 2017.
L_PriorPcode_LocalAuthority	The apprentice's home postcode local authority district.		Postcode lookup	Obtained from the National Statistics Postcode Lookup (UK) May 2017.
LearnActEndDate	The learning actual end date (DDMMYYYY).		ILR standard files	Set to <b>Learning Actual End Date</b> .
LearnAimBelowMS	Indicates whether the programme aim is classified as being below the minimum standards threshold.	0 or 1	Derived	See paragraphs 52 and 57 for details of how the classification below minimum standards is derived.  Set to 1 if the programme aim is classified as being below minimum standards. Otherwise set to 0.
LearnPlanEndDate	The learning planned end date (DDMMYYYY).		ILR standard files	Set to <b>Learning Planned End Date</b> .
LearnRefNumber	The learner reference number.		ILR standard files	Set to <b>Learner Reference Number</b> .
LearnStartDate	The learning start date (DDMMYYYY).		ILR standard files	Set to <b>Learning Start Date</b> .
LLDDHealthProb	Indicates whether the apprentice considers that they have a learning difficulty, disability or health problem.		ILR standard files	Set to <b>LLDD and Health Problem</b> .

Data item	Description	Data values	Source (ILR)	Derivation
Not_Funded_Excl	Identifies whether an apprenticeship has ever received funding from us. Non funded aims are not included in QARs.	0 or 1	Derived	Set to 0 if the <b>Funding Model</b> is not 99 (No ESFA funding) in any year. Otherwise set to 1.
Outcome	The learning outcome of the programme aim.		ILR standard files	Set to <b>Outcome Indicator</b> .
Overdue_Continuing_Aim	Indicates whether the aim is an overdue continuing aim.	0 or 1	Derived	Set to 1 if the aim is an overdue continuing learning aim (as identified in paragraph 38), otherwise set to 0.
Overdue_Planned_Break	Indicates whether the aim is an overdue planned break.	0 or 1	Derived	Set to 1 if the aim is an overdue planned break (as identified in paragraphs 39 to 45), otherwise set to 0.
P_Actendyr	The actual end year of the programme aim (20_ _).		Derived	Set to the first calendar year of the funding period the <b>Learning Actual End Date</b> falls in. (For example, if the <b>Learning Actual End Date</b> falls in the 2016 to 2017 funding year, <b>P_Actendyr</b> has the value of 2016)
P_Count_Overall	For the overall QAR measure, this indicates whether the record should be counted towards the overall QAR.	0 or 1	Derived	Set to 1 if: <ul style="list-style-type: none"> <li>• <b>(Learning Actual End Date</b> is present; and</li> <li>• the <b>Learning Actual End Date</b> is no later than 31 July 2017); or.</li> <li>• the aim is an overdue continuing learning aim (as identified in paragraph 38; or</li> <li>• the aim is an overdue planned break (as identified in paragraphs 39 to 45).</li> </ul> Otherwise set to 0.
P_Count_Timely	For the timely QAR measure, this indicates whether the record should be counted towards the timely QAR.	0 or 1	Derived	Set to 1 if: <ul style="list-style-type: none"> <li>• the <b>Learning Planned End Date</b> is no later than 31 July 2017.</li> </ul> Otherwise set to 0.
P_Expendyr	The expected end year of the programme aim (20_ _).		Derived	Set to the value of the first calendar year of the funding period the <b>Learning Planned End Date</b> falls in. (For example, if the <b>Learning Planned End Date</b> falls in the 2016 to 2017 funding year, <b>P_Expendyr</b> has the value of 2016)
P_Ach_Overall	For the overall QAR measure, this indicates whether the programme aim has been achieved.	0 or 1	Derived	Set to 1 if: <ul style="list-style-type: none"> <li>• <b>D_AchieveRateStatus</b> is 1 (Achieved); and</li> <li>• the <b>Learning Actual End Date</b> is not later than 31 July 2017.</li> </ul> Otherwise set to 0.

Data item	Description	Data values	Source (ILR)	Derivation
P_Ach_Timely	For the timely QAR measure, this indicates whether the programme aim has been achieved.	0 or 1	Derived	Set to 1 if: <ul style="list-style-type: none"> <li><b>D_AchieveRateStatus</b> is 1 (Achieved);</li> <li>the <b>Learning Planned End Date</b> is not later than 31 July 2017; and</li> <li>the <b>Learning Actual End Date</b> is on or before the <b>Learning Planned End Date</b>, or no more than 90 days after it.</li> </ul> Otherwise set to 0.
P_Hybridendyr	The hybrid end year of the programme aim (20_ _).		Derived	Set to: <ul style="list-style-type: none"> <li>the actual learning end year (<b>P_Actendyr</b>); or</li> <li>the expected learning end year (<b>P_Expendyr</b>);</li> </ul> whichever is higher.
P_Startyr	The start year of the programme aim (20_ _).		Derived	Set to the value of the first calendar year of the funding period the <b>Learning Start Date</b> falls in. (For example, if the <b>Learning Start Date</b> falls in the 2016 to 2017 funding year, <b>P_Startyr</b> is set to 2016)
Pilot_Excl	Apprenticeship seasonal worker pilot learning aims are not included in QARs.	0 or 1	Derived	Set to 1 if LDM is 348 (Apprenticeship seasonal worker pilot).
PrimaryLLDD	The primary learner disability, learning difficulty or and health problem of the learner.  For learners who are continuing from 2014 to 2015, who had both a learning difficulty and a learning disability a provider does not have to identify which is the primary category. When this occurs the PrimaryLLDD field will not be populated.		ILR standard files	For ILR files for 2014 to 2015 the value is taken from either disability ( <b>LLDD and Health Problem Code</b> where the <b>LLDD and Health Problem Type</b> is 'DS') or from learning difficulty ( <b>LLDD and Health Problem Code</b> where the <b>LLDD and Health Problem Type</b> is 'LD').  If disability and learning difficulty both contain a value of 99 (Not provided), set to 99.  If disability and learning difficulty both contain a value, and both values are not 99 (Not provided), the field is not populated. If only disability or learning difficulty contains a value set PrimaryLLDD as follows.  Set to 1 if disability is 6. Set to 2 if disability is 90. Set to 3 if learning difficulty is 90. Set to 4 if disability is 1. Set to 5 if disability is 2. Set to 6 if disability is 3.

Data item	Description	Data values	Source (ILR)	Derivation
				Set to 7 if disability is 9. Set to 9 if disability is 7. Set to 10 if learning difficulty is 1. Set to 11 if learning difficulty is 2. Set to 12 if learning difficulty is 10. Set to 13 if learning difficulty is 11. Set to 14 if learning difficulty is 20. Set to 15 if disability is 10. Set to 16 if disability is 8. Set to 93 if disability is 4. Set to 94 if learning difficulty is 19. Set to 95 if disability is 5. Set to 96 if learning difficulty is 97. Set to 97 if disability is 97. Set to 99 if disability or learning difficulty is 99.  For ILR files for 2015 to 2016 onwards set to <b>LLDDCat</b> where <b>PrimaryLLDD</b> is 1.
PriorAttain	The learner's prior attainment level.		ILR standard files	Set to <b>Prior Attainment</b> .
ProgType	The programme type.		ILR standard files	Set to <b>Programme Type</b> .
Prv_Type	The type of provider.		ILR 2016 to 2017 provider details file	Obtained from the ILR 2016 to 2017 provider details file.
PathwayCode	The pathway of the Apprenticeship framework being undertaken.		ILR standard files	Set to <b>Apprenticeship Pathway</b> .
PathwayName	The pathway name on the final matched record.		Derived	Set to <b>PathwayName</b> from the framework lookup.
QAR_Status_Overall	Indicates whether or not the record is included in the provider's overall QAR calculations.	QAR Inclusions QAR Exclusions	Derived	Set to 'QAR Exclusions' if the aim is not included in overall QAR calculations. Otherwise set to 'QAR Inclusions'.  For most excluded aims, a specific exclusion flag will also be set.
QAR_Status_Timely	Indicates whether or not the record is included in the provider's timely QAR calculations.	QAR Inclusions QAR Exclusions	Derived	Set to 'QAR Exclusions' if the aim is not included in timely QAR calculations. Otherwise set to 'QAR Inclusions'. For most excluded aims, a specific exclusion flag will also be set.
SectorSubjectAreaTier1	Sector subject area – the broad (tier 1) classification of the subject of the programme aim.		Derived	Set to <b>SectorSubjectAreaTier1</b> from the framework or standard lookup.

Data item	Description	Data values	Source (ILR)	Derivation
SectorSubjectAreaTier2	The more specialised classification (tier 2) of the subject of the programme aim.		Derived	Set to <b>SectorSubjectAreaTier2</b> from the framework or standard lookup.
Sex	The apprentice's sex.		ILR standard files	Set to <b>Sex</b> .
StdCode	Standard code.		ILR standard files	Set to <b>Standard Code</b> .
StdName	Standard name.		Derived	Set to <b>StdName</b> from the Standard lookup.
Subcontractor_Name	The subcontractor's name.		ILR 2016 to 2017 provider details file	The name of the subcontracting provider, from the ILR 2016 to 2017 provider details file.
Subcontractor_UKPRN	The UKPRN of the partner provider which delivered the main assessment aim or competency aim of an apprenticeship.		Derived	<p>For ILR files for 2012 to 2013, set to the <b>Subcontracted or Partnership UKPRN</b> of the main learning aim of the apprenticeship. The main learning aim for an apprenticeship programme is where:</p> <ul style="list-style-type: none"> <li>• <b>Aim Type</b> is 2 (Main learning aim);</li> <li>• <b>UKPRN</b> is the same as the <b>UKPRN</b> of the programme aim;</li> <li>• <b>Learner Reference Number</b> is the same as the <b>Learner Reference Number</b> of the programme aim;</li> <li>• <b>Programme Type</b> is the same as the <b>Programme Type</b> of the programme aim; and</li> <li>• <b>Learning Start Date</b> is the same as the <b>Learning Start Date</b> of the programme aim.</li> </ul> <p>For ILR files for 2013 to 2014 onwards, set to the <b>Subcontracted or Partnership UKPRN</b> of the competency learning aim of the apprenticeship. The competency learning aims is identified from the LARS Framework Aims table.</p> <p>The component aims of an apprenticeship programme are those where:</p> <ul style="list-style-type: none"> <li>• <b>Aim Type</b> is 3 (Component learning aim within a programme);</li> <li>• <b>UKPRN</b> is the same as the <b>UKPRN</b> of the programme aim;</li> <li>• <b>Learner Reference Number</b> is the same as the <b>Learner Reference Number</b> of the programme aim;</li> <li>• <b>Framework Code</b> is the same as the <b>Framework Code</b> of the programme aim;</li> <li>• <b>Programme Type</b> is the same as the <b>Programme Type</b> of the programme aim; and</li> </ul>

Data item	Description	Data values	Source (ILR)	Derivation
				<ul style="list-style-type: none"> <li><b>Learning Start Date</b> is the same as the <b>Learning Start Date</b> of the programme aim.</li> </ul> <p>Each component aim of the apprenticeship is checked against the LARS Framework Aims table. The component learning aim is the competency aim where:</p> <ul style="list-style-type: none"> <li><b>Learning Aim Reference</b> is the same as <b>LearnAimRef</b> on the LARS Framework Aims table;</li> <li><b>Framework Code</b> is the same as <b>FworkCode</b> on the LARS Framework Aims table;</li> <li><b>Programme Type</b> is the same as <b>ProgType</b> on the LARS Framework Aims table;</li> <li><b>Apprenticeship Pathway</b> is the same as <b>PwayCode</b> on the LARS Framework Aims table; and</li> <li><b>FrameworkComponentType</b> on the LARS Framework Aims table is 1.</li> </ul>
SWSupAimID	The software supplier's aim identifier of the aim.		ILR standard files	For ILR files for 2014 to 2015 onwards set to <b>SWSupAimID</b> . (This field is not present for ILR files 2012 to 2013 and 2013 to 2014)
UKPRN	The UK provider reference number (UKPRN).		ILR standard files	Set to <b>UK Provider Reference Number</b> .
UKPRN_orig	The UKPRN of the programme aim before the college merger process was applied to a provider's data.		Derived	See paragraphs 25 to 27 for information on setting this field.
ULN	Unique learner number.		ILR standard files	Set to <b>Unique Learner Number</b> .
WithdrawalReason	The reason learning ended.		ILR standard files	Set to <b>Withdrawal Reason</b> .
Year	The current funding year for the QARs dataset.	2016/17	Derived	Set to '2016/17'.
YearAimSubmitted	The funding year which the aim was submitted in.		Derived	Set to '2012/13' if the learning aim is taken from the 2012 to 2013 ILR; '2013/14' if from the 2013 to 2014 ILR; '2014/15' if from the 2014 to 2015 ILR; '2015/16' if from the 2015 to 2016 ILR or '2016/17' if from the 2016 to 2017 ILR.



## Contents of the qualification achievement rates dataset for records created from the LEOP dataset

### Source or derivation of fields in the qualification achievement rates dataset

60. The two reference files used in some of the derivations are as follows.

- a) The 2016/2017 Framework lookup file – this file holds programme aim information from the Learning Aims Reference System (LARS) as at the ‘hard close’ of the 2016 to 2017 ILR (19 October 2017).
- b) The 2016/2017 Provider Details file – this file holds providers’ details from the Provider and Organisation Information Management System (PIMS), as at 31 July 2017.
- c) The look-up used to determine the delivery region and delivery local authority of a delivery location postcode is obtained from the National Statistics Postcode Lookup (UK) May 2017. This will be available to download from the Office of National Statistics website.

Data item	Description	Data values	Source (LEOP)	Derivation
Age_Band	A banding of the apprentice’s age at the start of the Apprenticeship programme.	1 = 16 to 18 2 = 19 to 23 3 = 24 or more	Derived	Set to 1 if <b>D_AgeAimStart</b> is 0 to 18. Set to 2 if <b>D_AgeAimStart</b> is 19 to 23. Set to 3 if <b>D_AgeAimStart</b> or 24 or greater.
App_Stand_NoNetPay_Excl	Indicates that the learner on a trailblazer standard has withdrawn without a net employer contribution payment being recorded.	0 or 1	Derived	Set to 0.
ClassLearn_Excl	Indicates that the learning aim is a classroom learning aim reported through the employer responsive funding stream. Classroom learning aims reported through the employer responsive funding stream are not included in QARs.	0	Derived	Set to 0.
CompStatus	The completion status of the programme aim.		LEOP standard files	Set to <b>Completion Status</b> .
D_AchieveRateStatus	The status of the learning aim for calculating QARs.		ILR standard files / Derived	Set the value as follows. <ul style="list-style-type: none"> <li>Set to 0 (Continuing) if the <b>Learning Actual End Date</b> is not populated.</li> <li>Set to 1 (Achieved) if the <b>Learning Actual End Date</b> is populated and the <b>Learning Outcome</b> is 1.</li> <li>Set to 11 (Apprentice is taking a planned break from learning) if the <b>Completion Status</b> is 6.</li> </ul>

Data item	Description	Data values	Source (LEOP)	Derivation
				<ul style="list-style-type: none"> <li>Set to 8 (Transfer to a new programme at the same provider) if the <b>Completion Status</b> is 4 or 5.</li> </ul> <p>If none of the conditions above apply, set to 6 (Not achieved). (As the LEOP dataset does not include a 'Reason Learning Ended' <b>D_AchieveRateStatus</b>, values of 9 (Transfer to new provider) and 10 (Transfer to a new provider forced by SFA or EFA intervention) cannot be determined)</p>
D_AgeAimStart	The age of the apprentice on the start date of the programme aim.		LEOP standard files	Set to <b>A_Agest</b> .
Datasource	The source of the record on the QARs dataset, which is either the ILR or the LEOP dataset.	LEOP	Derived	Set to LEOP.
DelLocPostCode	The postcode of the delivery location.		LEOP standard files	Set to <b>Delivery Location Postcode</b> .
DelLocPostCode_GOR	The delivery location postcode Government office region.		Postcode lookup	Obtained from the National Statistics Postcode Lookup (UK) May 2017.
DelLocPostCode_LocalAuthority	The delivery location postcode local authority.		Postcode lookup	Obtained from the National Statistics Postcode Lookup (UK) May 2017.
Ethnicity	The apprentice's ethnic background.		LEOP standard files	Set to <b>Learner Ethnicity</b> .
FreeMeals	Indicates that the learner is eligible for free meals, or is eligible and receiving free meals. 19+ learners are not eligible for free meals.		Derived	Set to 0.
Fund_Qual_Excl	Indicates that the learner has withdrawn from a learning aim before the qualifying number of days for funding has been met.  (The qualifying period for funding aims with a planned duration of less than 14 days is 1 day. Fund_Qual_Excl is always set to 0 for aims with a planned duration of less than 14 days)	0	Derived	Set to 0.
FworkCode	Framework code.		LEOP standard files.	Set to <b>Framework Code</b> .
FworkName	Framework name.		Derived	Set to <b>FworkName</b> from the framework lookup.
L_PriorPcode	The apprentice's home postcode.		LEOP standard files	Set to <b>Learner Home Postcode</b> .

Data item	Description	Data values	Source (LEOP)	Derivation
L_PriorPcode_GOR	The apprentice's home postcode Government office region.		Postcode lookup	Obtained from the National Statistics Postcode Lookup (UK) May 2017.
L_PriorPcode_LocalAuthority	The apprentice's home postcode local authority.		Postcode lookup	Obtained from the National Statistics Postcode Lookup (UK) May 2017.
LearnActEndDate	The learning actual end date (DDMMYYYY).		LEOP standard files	Set to <b>Learning Actual End Date</b> .
LearnAimBelowMS	Indicates whether the learning aim is classified as being below the minimum standards threshold.	0 or 1	Derived	See paragraphs 52 and 57 for details of how the classification below minimum standards is derived.  Set to 1 if the programme aim is classified as being below minimum standards. Otherwise set to 0.
LearnPlanEndDate	The learning planned end date (DDMMYYYY).		LEOP standard files	Set to <b>Learning Planned End Date</b> .
LearnRefNumber	The learner reference number.		Derived	Looked up from the Learning Records Service using the <b>ULN</b> .
LearnStartDate	The learning start date (DDMMYYYY).		LEOP standard files	Set to <b>Learning Start Date</b> .
LLDDHealthProb	Indicates whether the apprentice considers that they have a learning difficulty, disability or health problem.		LEOP standard files	Set to <b>LLDD and Health Problem Indicator</b> .
Outcome	The learning outcome of the programme aim.		LEOP standard files	Set to <b>Outcome Indicator</b> .
Overdue_Continuing_Aim	Indicates whether the aim is an overdue continuing aim.	Not populated	–	–
Overdue_Planned_Break	Indicates whether the aim is an overdue planned break.	Not populated	–	–
P_Actendyr	The actual end year of the programme aim (20_ _).		Derived	Set to the first calendar year of the funding period the <b>Learning Actual End Date</b> falls in. (For example, if the <b>Learning Actual End Date</b> falls in the 2016 to 2017 funding year, <b>P_Actendyr</b> has the value of 2016)
P_Count_Overall	For the overall QAR measure, this indicates whether the record should be counted towards the overall QAR.	0 or 1	Derived	Set to 1 if: <ul style="list-style-type: none"> <li><b>Learning Actual End Date</b> is populated; and</li> <li>the <b>Learning Actual End Date</b> is no later than 31 July 2017.</li> </ul> Otherwise set to 0.

Data item	Description	Data values	Source (LEOP)	Derivation
P_Count_Timely	For the timely QAR measure, this indicates whether the record should be counted towards the timely QAR.	0 or 1	Derived	Set to 1 if: <ul style="list-style-type: none"> <li>the <b>Learning Planned End Date</b> is no later than 31 July 2017.</li> </ul> Otherwise set to 0.
P_Expendyr	The expected end year of the programme aim (20_ _).		Derived	Set to the value of the first calendar year of the funding period the <b>Learning Planned End Date</b> falls in. (For example, if the <b>Learning Planned End Date</b> falls in the 2016 to 2017 funding year, <b>P_Expendyr</b> has the value of 2016)
P_Ach_Overall	For the overall QAR measure, this indicates whether the apprentice has achieved the apprenticeship.	0 or 1	Derived	Set to 1 if: <ul style="list-style-type: none"> <li><b>D_AchieveRateStatus</b> is 1 (Achieved); and</li> <li>the <b>Learning Actual End Date</b> is not later than 31 July 2017.</li> </ul> Otherwise set to 0.
P_Ach_Timely	For the timely QAR measure, this indicates whether the apprentice has achieved the apprenticeship.	0 or 1	Derived	Set to 1 if; <ul style="list-style-type: none"> <li><b>D_AchieveRateStatus</b> is 1 (Achieved);</li> <li>the <b>Learning Planned End Date</b> is not later than 31 July 2017; and</li> <li>the <b>Learning Actual End Date</b> is on or before the <b>Learning Planned End Date</b>, or no more than 90 days after it.</li> </ul> Otherwise set to 0.
P_Hybridendyr	The hybrid end year of the programme aim (20_ _).		Derived	Set to: <ul style="list-style-type: none"> <li>the actual learning end year (<b>P_Actendyr</b>); or</li> <li>the expected learning end year (<b>P_Expendyr</b>);</li> </ul> whichever is higher.
P_Startyr	The start year of the programme aim (20_ _).		Derived	Set to the value of the first calendar year of the funding period the <b>LearnStartDate</b> falls in. (For example, if the <b>LearnStartDate</b> falls in the funding year 2016 to 2017, <b>P_Startyr</b> is set to 2016)
Pilot_Excl	Apprenticeship seasonal worker pilot learning aims are not included in QARs.	0 or 1	Derived	Set to 1 if LDM is 348 (Apprenticeship seasonal worker pilot).
PrimaryLLDD	The primary learner disability, learning difficulty or and health problem of the learner.	Not populated	–	–
PriorAttain	The learner's prior attainment level.	Not populated	–	–
ProgType	The type of programme.		LEOP standard files	Set to <b>Programme Type</b> .

Data item	Description	Data values	Source (LEOP)	Derivation
Prv_Type	The type of provider.		ILR 2016 to 2017 provider details file	Obtained from the ILR 2016 to 2017 provider details file.
PathwayCode	The pathway of the apprenticeship being undertaken.	Not populated	–	–
PathwayName	The pathway name	Not populated	–	–
QAR_Status_Overall	Indicates whether or not the record is included in the provider's overall QAR calculations.	QAR Inclusions QAR Exclusions	Derived	Set to 'QAR Exclusions' if the aim is not included in overall QAR calculations. Otherwise set to 'QAR Inclusions'. For most excluded aims, a specific exclusion flag will also be set.
QAR_Status_Timely	Indicates whether or not the record is included in the provider's timely QAR calculations.	QAR Inclusions QAR Exclusions	Derived	Set to 'QAR Exclusions' if the aim is not included in timely QAR calculations. Otherwise set to 'QAR Inclusions'. For most excluded aims, a specific exclusion flag will also be set.
SecSubjAreaTier1	Sector subject area – the broad (tier 1) classification of the subject of the programme aim.		Derived	Set to <b>SecSubjAreaTier1</b> from the framework lookup.
SecSubjAreaTier2	The more specialised classification (tier 2) of the subject of the programme aim.		Derived	Set to <b>SecSubjAreaTier2</b> from the framework lookup.
Sex	The apprentice's sex.		LEOP standard files	Set to <b>Gender</b> .
Subcontractor_Name	The subcontractor's name.	Not populated	–	–
Subcontractor_UKPRN	The UKPRN of the partner provider which delivered the main assessment aim or competency aim of an apprenticeship.	Not populated	–	–
SWSupAimID	The software supplier's aim identifier of the aim.	Not populated	–	–
UKPRN	UK provider reference number (UKPRN).		LEOP standard files	Set to <b>UKPRN</b> .
ULN	Unique learner number (ULN)		LEOP standard files	Set to <b>ULN</b> .
WithdrawalReason	The reason learning ended.	Not populated	–	–
Year	The current funding year for the QARs dataset.	2016/17	Derived.	Set to '2016/17'.
YearAimSubmitted	The funding year which the aim was submitted in.		Derived	Set to '2012/13' if the learning aim is taken from the 2012 to 2013 LEOP dataset; '2013/14' if from the 2013 to 2014 LEOP dataset or '2014/15' if from the 2014 to 2015 LEOP dataset.

© Crown copyright 2017

You may re-use this information (excluding logos) free of charge in any format or medium, under the terms of the Open Government Licence.

To view this licence, visit <http://www.nationalarchives.gov.uk/doc/open-government-licence/> or email: [psi@nationalarchives.gsi.gov.uk](mailto:psi@nationalarchives.gsi.gov.uk).

Where we have identified any third party copyright information you will need to obtain permission from the copyright holders concerned.

This document is also available from our website [gov.uk/esfa](http://gov.uk/esfa).

If you have any enquiries regarding this publication or require an alternative format, please contact us [sde.servicedesk@education.gov.uk](mailto:sde.servicedesk@education.gov.uk).