



Standards
& Testing
Agency

2019 key stage 2 teacher assessment

Technical specification

March 2019

Contents

1 About this guidance	4
1.1 Purpose and audience	4
1.2 Scope	4
1.3 Assumptions	5
1.4 Changes for 2019	5
1.5 Key dates	6
2 Collection and submission of assessment data by schools	7
2.1 Outline of data content	7
2.2 What teachers are assessing	7
2.3 Entry of results into school MIS	8
Pre-key stage standards	8
P scales	9
2.4 Submitting results	9
2.4.1 MIS data entry checks	10
2.4.2 Naming convention for school CTF file	10
2.4.3 Loading KS2 results into the LA's central management system	10
2.4.4 Creation of XML export file by the school or LA for transmission to DfE	11
2.5 Additional LA software requirements	13
2.6 Reports for schools and parents	13
2.7 Return of data to schools	13
3 Data return formats	14
3.1 Special notes for XML returns	14
3.2 Example file structure for XML returns	15
4 Data validation rules	16
4.1 Header validation	16
4.2 Establishment level validation	17
4.3 Pupil level validation	17
5 Resubmission guidance	25
6 Valid values	26
6.1 LA codes	26

6.2 Assessment parameters

26

6.3 P scale parameters

26

1 About this guidance

1.1 Purpose and audience

This specification describes the 2019 key stage 2 (KS2) data collection for:

- teacher assessment (TA)
- pre-key stage standards
- P scales

It also covers the validation rules that will be applied and should be used in conjunction with the current [Common basic data set \(CBDS\)](#)¹ definitions.

This document is for use by schools, local authorities (LAs) and software suppliers to help them prepare and return all the required compliant data listed above.

The following legislation underpins the provision and publication of this information:

- the Education Act 1996 s29(3)
- the Education (School Performance Information)(England) Regulations 2007
- regulations 5 and 8 School Information (England) Regulations 2008

1.2 Scope

This data collection covers all schools in England that are required, or have chosen to, provide data on all KS2 assessments carried out during 2019. It also covers LAs that might be submitting data on behalf of schools, including independent, academy and free schools outside of their geographical area, where the LA has been selected to carry out moderating activities.

¹ www.gov.uk/government/collections/common-basic-data-set

Figure 1 outlines the overall scope of the collection:

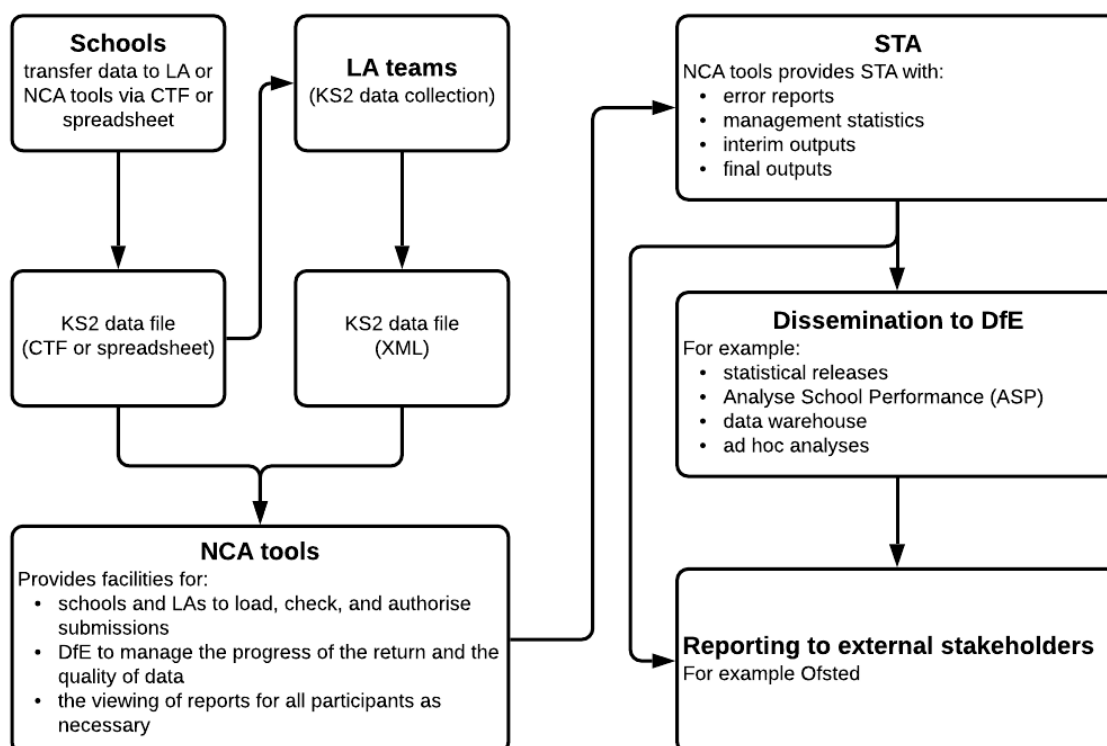


Figure 1: high-level data collection process

This technical specification contains a narrative, sample XML messages, and validation. Schools, LAs and suppliers should read this specification in conjunction with the CBDS.

1.3 Assumptions

Assumptions made in creating this specification:

- where appropriate, the data specification has used e-Gif data standards
- the return will use the NCA tools website as the data collection mechanism
- DfE will only accept submissions in XML format, or using the appropriate KS2 Excel template, which is provided on NCA tools

1.4 Changes for 2019

Include:

- a change of common transfer file (CTF) version to CTF 18
- the removal of P scales 5 to 8

- final pre-key stage 2 standards have replaced the interim foundations for the expected standard, early development of the expected standard, and growing development of the expected standard
- schools are no longer required to make statutory TA judgements in English reading and mathematics for pupils working above pre-key stage standards in these subjects
- CBDS reference codes have been updated for XML file specification

1.5 Key dates

Data must be submitted via NCA tools between 20 May and 27 June, either directly from schools or via LAs submitting on their behalf. Schools and LAs will be able to correct errors and resubmit until the TA module closes in September.

All data submitted by 27 June will be included in the first release of unvalidated data on Analyse School Performance (ASP). However, all data received between this date and the closure of the module will be included in the subsequent, updated release on ASP in December, and will be shown on the performance tables checking website as 'late results'.

2 Collection and submission of assessment data by schools

2.1 Outline of data content

Each return from a school or LA will consist of a header and one or more school modules. Each school module will contain a pupil module with a number of pupil records. Each pupil record will include identifiers and a series of assessment records that, where appropriate, will include P scale assessments.

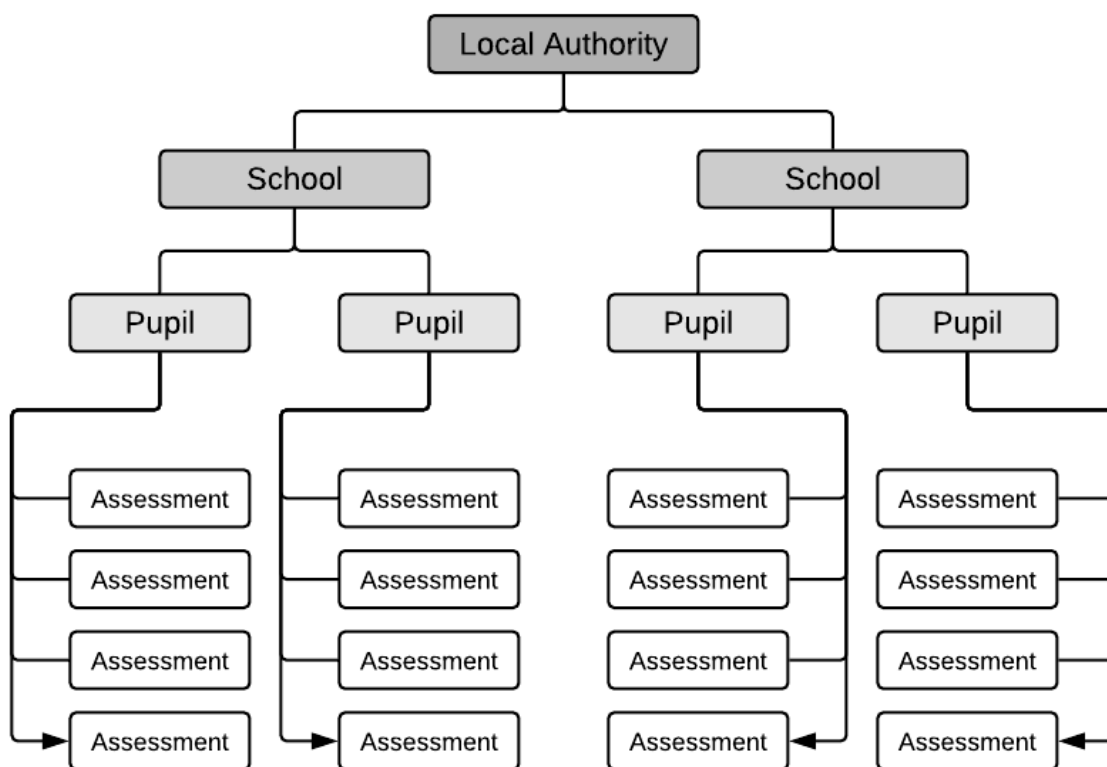


Figure 2: outline structure of data

2.2 What teachers are assessing

At the end of KS2, teachers have to summarise their TA, pre-key stage and P scale judgements for each eligible pupil, taking into account the pupil's progress and performance throughout the key stage. They need to determine whether:

- a pupil is at the expected standard for science
- a pupil is working towards the expected standard, working at the expected standard, or working at a greater depth within the expected standard for English writing

- where applicable, a pupil is working at pre-key stage standards, or whether they have not met the expected standard for English reading, English writing and mathematics
- whether a pupil is working below defined standards or is working at P scales

2.3 Entry of results into school MIS

Each pupil's TA for English writing and science must be entered into the school's management information system (MIS). In addition, results for any pupils working at pre-key stage or P scales 1 to 4 must be entered in the MIS for all applicable subjects below:

- English reading (ENG REA)
- English writing (ENG WRI)
- mathematics (MAT MAT)
- science (SCI SCI)

These subjects are to be assessed against the [KS2 TA frameworks](#)², the [Pre-key stage 2: pupils working below the national curriculum assessment standard](#)³, and P scales 1 to 4.

Pre-key stage standards

The Rochford review recommends the use of additional defined standards where a pupil has not achieved all the required elements of the standards defined in the TA framework. The use of these additional standards is aimed at pupils and subjects where another measure of accountability, such as a test result, is not available.

For English reading and mathematics, the pre-key stage standards should be used where a pupil has not been entered for the tests and has not achieved the expected standard.

For English writing, the pre-key stage standards should be used for pupils who have not met the statements defined for working towards the standard but are working above P scales 1 to 4.

There are no pre-key stage standards for science. Any pupils that have not met the expected national curriculum standard should be marked as HNM, with P scales also submitted as appropriate.

² www.gov.uk/government/publications/teacher-assessment-frameworks-at-the-end-of-key-stage-2

³ www.gov.uk/government/publications/pre-key-stage-2-standards

P scales

P scales should still be submitted for each applicable subject where a pupil is engaged in non-subject specific study with the expectation that they would be consistent across each subject.

Where a pupil is assessed to be working below the defined standards (BLW) in the pre-key stage standards framework, assessments must be made and recorded against all appropriate P scale 1 to 4 attainment targets for that subject (see section 4.3 for validation checks).

Assessments should not be made against the P scale where a pupil is recorded as not having met the pre-key stage standard because they have English as an additional language, unless they also have an identified special educational need (SEN). Schools should submit NOTSEN in place of P scales for these pupils.

P scales are not required against individual attainment targets when the overall performance of the pupil for the subject is above BLW. In the event that P scales are submitted when a pupil is above BLW, the file will not be rejected.

2.4 Submitting results

Steps 1 and 2 below are for schools submitting their TA directly or via their LA:

1. Entry by schools of individual pupils' KS2 TA results, (including, pre-key stage and P scale results if applicable), into their respective MIS.
2. Creation of a CTF for loading into NCA tools, or if arrangements have been made for an LA to submit data on the school's behalf, submission to the LA by secure means.

LAs submitting data on behalf of schools are required to complete steps 3 and 4 after schools have completed steps 1 and 2:

3. Loading of results, (in all formats), into the LA central database or processing system.
4. Creation of school XML export files by LA software for loading into NCA tools.

The full list of valid assessment values is as shown in the [Assessment component files: 2019 \(A Comp\)](#)⁴.

⁴ www.gov.uk/government/publications/assessment-component-files-2019

2.4.1 MIS data entry checks

The school MIS software should check that a valid judgement has been entered for each TA, pre-key stage and P scale subject where appropriate. Any invalid or missing entries should be reported to the school when the data is entered or when the CTF is to be created. Please see section 4.

2.4.2 Naming convention for school CTF file

XML files should be created using the following naming convention:

'xxxnnnn_KS2_NAALLL_yyy.XML'

'xxx' represents the LA number, 'nnnn' is the school number and 'yyy' is an incremented version number starting at 001.

2.4.3 Loading KS2 results into the LA's central management system

Where an LA is collecting and submitting data on behalf of schools, the LA's central management system should allow the LA to import the CTF into its central database at paragraph 2.4.2 and validate in accordance with the rules in sections 4.1 to 4.3. Any missing or invalid TA, pre-key stage and P scales should be reported. The software should also warn if any unique pupil numbers (UPNs) are missing or invalid, or if any dates of birth are missing or incomplete.

In addition, the software should allow the LA to load into its central database a file created by independent schools from the KS2 TA template available on NCA tools.

The export filename should be:

'ks2_yyyxxxx_###.xls'

'yyy' is the LA number and 'xxxx' is the school establishment number (this number will always start with a 6) and '###' is the version number of the file.

Where any pupil's identifying or contextual data is already present in the LA central database there should be a prompt to ask if the existing data should be overwritten by the CTF or CSV import.

Where a CTF contains any pupil's previous assessment data (for example, earlier years' end-of-key stage results) there should be a prompt to ask if the existing assessment data should be overwritten.

The LA should also have facilities to:

- remove and add pupils

- amend a pupil’s identifying data or result outcomes, and for the new data to be revalidated in accordance with the rules in sections 4.1 to 4.3
- reimport a corrected CTF with an option for the operator to either replace all existing data or add as new data, and be validated in accordance with the rules in sections 4.1 to 4.3

2.4.4 Creation of XML export file by the school or LA for transmission to DfE

The software should create separate XML files containing individual pupil data for each school as specified in the example XML file in section 3.2. The files should be created for loading into the DfE data collection system (NCA tools).

These XML files should be validated in accordance with the rules in sections 4.1 to 4.3. Any data failing the validation checks should be reported using the error codes and messages specified.

In addition to LA and school number, the file will contain the following data items for each pupil:

Identifier	CBDS Module	Data Item Name
N00001	Pupil identifiers	UPN
N00003	Pupil identifiers	Surname
N00004	Pupil identifiers	Forename
N00006	Pupil identifiers	Date of birth
N00007	Pupil identifiers	Pupil gender

Each pupil will have a number of stage assessments containing:

- each KS2 TA or pre-key stage result as recorded
- each P scale result as recorded

Task or test results are not to be included in the XML file.

Additional data items should also be included where available to assist the Standards and Testing Agency in manual resolution of exceptions. These occur when TA data is uploaded for a pupil who cannot be matched to an existing registered pupil based on the pupil identifiers listed above. These data items are as follows:

Identifier	CBDS module	Data item name
N00002	Pupil identifiers	Pupil's former UPN
N00005	Pupil identifiers	Middle names
N00008	Pupil identifiers	Pupil former surname
N00009	Pupil identifiers	Pupil preferred forename
N00010	Pupil identifiers	Pupil or child preferred surname
N00018	Pupil status	Date of entry
N00147	Previous school history	Previous school DfE establishment number

Please note, an approved supplier ID will not be issued. NCA tools will use the supplier ID tag value specified by suppliers for this purpose.

Naming convention for the XML file

The name of the XML file will be:

'yyyxxx_KS2_NAALLL_###.XML'

'yyy' is the LA number and 'xxx' is the school establishment number and '###' is the version number of the file.

Exporting the XML

The LA should be provided with options to include in the export XML:

- all or selected schools' individual pupil results, even if these contain errors or have previously been exported (the software should inform the operator if a school is in error or has previously been exported)

The school should be provided with options to include in the export XML:

- all or selected individual pupil results, even if these contain errors or have previously been exported (the software should inform the operator if a pupil is in error)

Please note, whichever option is chosen, all individual pupil results within the school are to be exported.

Where a CTF contains any pupil's previous assessment data (for example earlier years' KS2 results) there should be a prompt to ask if the existing assessment data should be overwritten.

2.5 Additional LA software requirements

The software should allow the LA to:

- produce a list of schools to check that all expected schools returns have been processed
- produce a report for each school, or for all schools, to show the number of boys, the number of girls and the total number of pupils included in each school's CTF submission
- include in the DfE XML file any independent schools from within its own LA area whose results it has agreed to process
- create separate DfE XML files for any independent schools from outside its own area whose results it has agreed to process to allow the LA to exclude independent schools from its own LA analysis
- transmit results in batches without the need to resubmit results already transmitted

2.6 Reports for schools and parents

The software should produce 2019 pupil's results and 2019 school result reports.

Please note, where the P scale entry for a subject is NOTSEN, no P scale is to be shown in the pupil's report for that subject.

2.7 Return of data to schools

NCA tools will produce a file in XML format, which can be imported back into the school MIS. The data is also available in CSV format.

Imported data may differ from the existing data if changes have been made in NCA tools by the school, LA or an administrator, or if data was resubmitted following moderation by the LA.

In some cases data may be annulled following moderation. This process was introduced in 2018 and is denoted by the 'Q' code as specified in A_Comp. This code will only be used in files exported from the Results section of NCA tools. The software should accept the import of the 'Q' code but validation should prevent the 'Q' code from being selected when creating TA data submission files (for example, validation codes 233, 234 and 235 below). To note, there should be no restriction on including the 'Q' code in other files, for example the CTF for onward transmission of a pupil's data to a new school.

3 Data return formats

A submission file from an LA or agent should be provided in an XML file structure as described in 3.2. Where an optional item is not included then the associated tag should also be omitted. Where a mandatory item is omitted then an error will be generated.

3.1 Special notes for XML returns

The standard XML entity references should be used for the following special characters:

Character	Entity reference
Ampersand (&)	&
Left angle bracket (<)	<
Right angle bracket (>)	>
Single quote or apostrophe (')	'
Double quotes ("")	"

For special characters such as é use a character reference such as é. This produces a generic XML file, which can be viewed as such in a suitable browser. Details of all such characters are found within the XML standard documentation, [Extensible Markup Language](#)⁵, section 2.2.

⁵ www.w3.org/TR/xml/

3.2 Example file structure for XML returns

CBDS	XMLFormatLayout	Notes
	<?xml version="1.0" encoding="UTF-8"?>	
	<CTfile>	
	<Header>	
N006	<DocumentName>Common Transfer File</DocumentName>	
N006	<CTFversion>18.0</CTFversion>	
N006	<DateTime>2018-07-23T15:30:47</DateTime>	
N006	<DocumentQualifier>partial</DocumentQualifier>	
N006	<SupplierID>SIMS</SupplierID>	
N006	<SourceSchool>	
N002	<LEA>302</LEA>	D00004
N001	<Estab>2071</Estab>	D00036
N000	<SchoolName>West School</SchoolName>	
N006	<AcademicYear>2019</AcademicYear>	Fixed value of 2018
	</SourceSchool>	
	<DestSchool>	
N002	<LEA>NAA</LEA>	D00004
N002	<Estab>LLLL</Estab>	D00036
	</DestSchool>	
	</Header>	
	<CTFpupilData>	A repeatable group of 1 or
	<Pupil>	
N000	<UPN>A123456789012</UPN>	
N000	<Surname>Smith</Surname>	
N000	<Forename>John</Forename>	
N000	<DOB>2007-03-21</DOB>	
N000	<Gender>M</Gender>	
	<StageAssessments>	
	<KeyStage>	
N001	<Stage>KS2</Stage>	D00182
	<StageAssessment>	<StageAssessment>: A repeatable group of 1 or more depending on the combination of <Subject>, <Method>, <Component> and <ResultQualifier> required.
N000	<Locale>ENG</Locale>	
N006	<Year>2019</Year>	
N001	<Subject>ENG</Subject>	
N000	<Method>TA</Method>	
N000	<Component>REA</Component>	
N000	<ResultStatus>R</ResultStatus>	
N002	<ResultQualifier>NC</ResultQualifier>	See A_Comp 2019
N000	<Result>EXS</Result>	
N000	<ResultDate>2019-06-	
	</StageAssessment>	
	</KeyStage>	
	</StageAssessments>	
	</Pupil>	
	</CTFpupilData>	
	</CTfile>	

4 Data validation rules

This section specifies validation rules that are applied to the data by DfE, using NCA tools. The rules should also be applied, and any issues resolved as far as possible:

- by schools prior to exporting the file and passing to the LA, or loading the data directly onto NCA tools
- by LAs prior to loading the data onto NCA tools

Those data items included in the specification but not appearing in the validation rules (those not shown in the validation rules as ‘must be present’), should be supplied where available (for example, pupil’s UPN). The rules also show which validations are errors and which ones are queries. An error is a failed validation check that must be corrected. A query is one that must be investigated, and potentially corrected, as it identifies data that would usually be invalid.

Any file that is exported with errors or queries and is uploaded to NCA tools without being corrected first, may upload with warnings or errors, or may fail to upload and will require a new file to be created and uploaded in order to correct it.

Syntax requirements for XML files:

- validation checks are expressed as conditions that must be true (errors) or that should be true (queries)
- the error message shows what will be displayed if the condition fails
- data items are indicated using the XML tag with the CBDS number in parentheses, for example <UPN> (N00001)
- data groups are indicated using the XML tag only, for example <Assessments>
- single dates or date ranges are sometimes defined in relation to <ReferenceDate>, which is from the XML header

4.1 Header validation

Sequence number	Error/query	Validation check	Error message
001	Error	<DocumentName> (N00600) must be present with a value of “Common Transfer File”	Document name missing or invalid – the file must be recreated
101	Error	<SupplierID> (N00605) must be present	Supplier ID is missing

4.2 Establishment level validation

Sequence number	Error/query	Validation check	Error message
301	Error	<LEA> (N00216) must be provided and must be a valid value	LA number missing or invalid
302	Error	<Estab> (N00279) must be present with a valid value	Establishment number is missing

4.3 Pupil level validation

Sequence number	Error/query	Validation check	Error message
1600	Error	<DOB> (N00006) must be present	Pupil's date of birth is missing
1601Q	Query	DOB> (N00006) should be between 1/9/2007 and 31/8/2008 for KS2	Pupil's date of birth is outside expected date range
1610	Error	<Gender> (N00007) must be present and a valid value	Pupil gender missing or invalid
1500	Error	Error all schools except independent schools <UPN> (N00001) (unique pupil number) must be present	UPN is missing

Sequence number	Error/query	Validation check	Error message
1510	Error	<p>If <UPN> (N00001) is present must contain the correct check letter</p> <p>To calculate the check letter:</p> <ol style="list-style-type: none"> Multiply the individual digits by their weights as follows: digit 2 by weight 2; digit 3 by weight 3; digit 4 by weight 4; digit 5 by weight 5; digit 6 by weight 6; digit 7 by weight 7; digit 8 by weight 8; digit 9 by weight 9; digit 10 by weight 10; digit 11 by weight 11; digit 12 by weight 12; digit 13 by weight 13. Sum the individual results, divide the total by 23, and take the remainder. Calculate the check letter from the result as follows: 0 = A; 1 = B; 2 = C; 3 = D; 4 = E; 5 = F; 6 = G; 7 = H; 8 = J; 9 = K; 10 = L; 11 = M; 12 = N; 13 = P; 14 = Q; 15 = R; 16 = T; 17 = U; 18 = V; 19 = W; 20 = X; 21 = Y; 22 = Z. <p>For calculating the check letter (see above) any alphabetical character at digit 13 is accorded the same numerical value as listed in paragraph 3 above; A=0, B=1, C=2 and so on.</p>	UPN invalid (wrong check letter at character 1)
1520	Error	Each pupil <UPN> (N00001) must be unique across all pupils in the school	More than one pupil record with the same UPN
1530	Error	<p>If <UPN> (N00001) is present characters 2-4 of <UPN> (N00001) must be a valid post April 1999 LA code or a recognised "pseudo LA" code (001-005, 201-213, 301-320, 330-336, 340-344, 350-359, 370-373, 380-384, 390-394, 420, 660-681, 701-708, 800-803, 805-808, 810-813, 815, 816, 820-823, 825, 826, 830, 831, 835, 836, 838-840, 841, 845, 846, 850-852, 855-857, 860, 861, 865-896, 908, 909, 916, 919, 921, 925, 926, 928, 929, 931, 933, 935-938)</p>	UPN invalid (characters 2-4 not a recognised LA code)
1540	Error	If <UPN> (N00001) is present characters 5-12 of <UPN> (N00001) must be numeric	UPN invalid (characters 5-12 not all numeric)

Sequence number	Error/query	Validation check	Error message
1550	Error	If <UPN> (N00001) is present characters 13 of <UPN> (N00001) must be numeric or A-Z omitting I, O and S	UPN invalid (character 13 not a recognised value)
1580	Error	<Surname> (N00003) must be present	Pupil with last name missing
1590	Error	<Forename> (N00004) must be present	Pupil with forename missing
113	Error	Each <StageAssessment> should only appear once for each <Pupil> for the same combination of <Subject><Component><ResultQualifier>	Assessments are either missing or invalid
223	Query	Where <Subject> = ENG and <Component> = REA and <ResultQualifier> = NC there should be a stage assessment <Result>	READING result is missing
224	Error	Where <Subject> = ENG and <Component> = WRI and <ResultQualifier> = NC there should be a stage assessment <Result>	WRITING result is missing
231	Query	Where <Subject> = MAT and <Component> = MAT and <ResultQualifier> = NC there should be a stage assessment <Result>	MATHS result is missing
232	Error	Where <Subject> = SCI and <Component> = SCI and <ResultQualifier> = NC there should be a stage assessment <Result>	SCIENCE result is missing
233	Error	If <Subject> concatenated with <Component> and <ResultQualifier> equals 'ENGREANC' or 'MATMATNC' then <Result> must be A, D, L, F, P, BLW, PK1, PK2, PK3, PK4, PK5 or PK6	Result is invalid
234	Error	If <Subject> concatenated with <Component> and <ResultQualifier> equals 'SCISCINC' then <Result> must be A, D, L, F, P, HNM or EXS	Result is invalid

Sequence number	Error/query	Validation check	Error message
235	Error	If <Subject> concatenated with <Component> and <ResultQualifier> equals 'ENGWRINC' then <Result> must be A, D, L, F, P, BLW, PK1, PK2, PK3, PK4, PK5, PK6, WTS, EXS or GDS	Result is invalid
236	Error	All schools except independent schools If <Subject> is ENG and <Component> is REA and <ResultQualifier> is NC and <Result> is BLW then there must be an assessment for that pupil where <Subject> is ENG and <Component> is ENG and <ResultQualifier> is NP and <Result> in P1i, P1ii, P2i, P2ii, P3i, P3ii, NOTSEN or at least one assessment where <Subject> is ENG and <Component> is SPE, LIS, REA or WRI and <ResultQualifier> is NP and <Result> is P4, NOTSEN, and one of these must be for REA	KS2 READING is BLW – P scale required
237	Error	All schools except independent schools If <Subject> is ENG and <Component> is WRI and <ResultQualifier> is NC and <Result> is BLW then there must be an assessment for that pupil where <Subject> is ENG and <Component> is ENG and <ResultQualifier> is NP and <Result> in P1i, P1ii, P2i, P2ii, P3i, P3ii, NOTSEN or at least one assessment where <Subject> is ENG and <Component> is SPE, LIS, REA or WRI and <ResultQualifier> is NP and <Result> is P4, NOTSEN, and one of these must be for WRI	KS2 WRITING is BLW – P scale required

Sequence number	Error/query	Validation check	Error message
238	Error	<p>All schools except independent schools</p> <p>If <Subject> is MAT and <Component> is MAT and <ResultQualifier> is NC and <Result> is BLW</p> <p>then there must be at least one assessment for that pupil where <Subject> is MAT and <Component> is MAT and <ResultQualifier> is NP and <Result> in P1i, P1ii, P2i, P2ii, P3i, P3ii, NOTSEN</p> <p>or <Subject> is MAT and <Component> is NUM, USE or SSM and <ResultQualifier> is NP and <Result> is P4, NOTSEN</p>	KS2 MATHS is BLW – P scale required
239	Error	<p>If <Subject> concatenated with <Component> and <ResultQualifier> equals 'ENGENGP' or 'MATMATNP' then</p> <p>for all independent schools if <Result> is present, then <Result> must be P1i, P1ii, P2i, P2ii, P3i, P3ii or NOTSEN</p> <p>otherwise, for all other schools, <Result> must be present and must be P1i, P1ii, P2i, P2ii, P3i, P3ii or NOTSEN</p>	P scale result is invalid
240	Error	<p>If <Subject> concatenated with <Component> and <ResultQualifier> equals 'SCISCINP' then</p> <p>for all independent schools if <Result> is present, <Result> must be P1i, P1ii, P2i, P2ii, P3i, P3ii, P4 or NOTSEN</p> <p>otherwise, for all other schools, <Result> must be present and must be P1i, P1ii, P2i, P2ii, P3i, P3ii, P4 or NOTSEN</p>	P scale result is invalid

Sequence number	Error/query	Validation check	Error message
241	Error	<p>If <Subject> concatenated with <Component> and <ResultQualifier> equals 'ENGSPENP', 'ENGLISNP', 'ENGREANP', 'ENGWRINP', 'MATNUMNP', 'MATUSENP' or 'MATSSMNP' then</p> <p>for all independent schools if <Result> is present, <Result> must be P4 or NOTSEN</p> <p>otherwise, for all other schools, <Result> must be present and must be P4 or NOTSEN</p>	P scale result is invalid
242	Error	<p>All schools except independent schools</p> <p>If <Subject> is ENG and <Component> is ENG and <ResultQualifier> is NP and <Result> is P1i, P1ii, P2i, P2ii, P3i, P3ii or NOTSEN</p> <p>then there must be assessments for that pupil where</p> <p><Subject> is ENG and <Component> is REA and <ResultQualifier> is NC and <Result> BLW, and <Subject> is ENG and</p> <p><Component> is WRI and <ResultQualifier> is NC and <Result> BLW</p>	English overall P scale level recorded – appropriate KS2 results must be BLW
243	Error	<p>All schools except independent schools</p> <p>If <Subject> is ENG and <Component> is REA and <ResultQualifier> is NP and <Result> is (P4 or NOTSEN)</p> <p>then there must be one assessment where</p> <p><Subject> is ENG and <Component> is REA and <Result> is BLW</p>	P scale level recorded – KS2 English reading must be BLW

Sequence number	Error/query	Validation check	Error message
244	Error	All schools except independent schools If <Subject> is ENG and <Component> is WRI and <ResultQualifier> is NP and <Result> is (P4 or NOTSEN) then there must be one assessment where <Subject> is ENG and <Component> is WRI and <Result> is BLW	P scale level recorded – KS2 English writing must be BLW
245	Error	All schools except independent schools If <Subject> is MAT and <Component> is MAT and <ResultQualifier> is NP and <Result> is P1i, P1ii, P2i, P2ii, P3i, P3ii or NOTSEN then there must be an assessment for that pupil where <Subject> is MAT and <Component> is MAT and <ResultQualifier> is NC and <Result> BLW	Maths overall P scale level recorded – appropriate KS2 results must be BLW
246	Error	All schools except independent schools If <Subject> is SCI and <Component> is SCI and <ResultQualifier> is NP and <Result> is P1i, P1ii, P2i, P2ii, P3i, P3ii, P4 or NOTSEN then there must be an assessment for that pupil where <Subject> is SCI and <Component> is SCI and <ResultQualifier> is NC and <Result> HNM	Science P scale level recorded – appropriate KS2 results must be HNM
119	Error	Each of the combinations of parameters at section 6.2 must be present once and once only and where the assessment is at BLW, the appropriate P scale parameters from section 6.3 must be present – no other parameters should be present	Assessments are either missing or invalid
285	Error	P scale parameters for an assessment cannot be present for both overall subject and for subject component, unless all parameters are recorded as NOTSEN	Assessments are invalid

Please note the following:

When NOTSEN is submitted as a valid result for a P scale, it indicates that the pupil is not on the SEN register but not yet working at PK1 standard. English as a second language is the most common reason for this.

P scales will be accepted by NCA tools without a corresponding BLW and will not create an error message (as per 242-245 above). However, best practice is that all P scales should be submitted with corresponding BLW, and vice versa.

As TA for English reading and mathematics is no longer required at KS2, but the requirement for pre-key stage and P scales 1-4 for pupils working at those levels remains, the error message should be replaced with a warning message acknowledging that the data is not required for pupils working above this level.

5 Resubmission guidance

When resubmissions are required, the serial number in the header must be incremented by the provider's software. Note that a resubmission will overwrite the data contained in the previous submission, but will not remove existing data that is not included in the resubmission.

6 Valid values

Valid item values must be in the list or range specified in the [CBDS database⁶](#), subject to the exceptions and restrictions below.

6.1 LA codes

LA codes (CBDS number N00216, codeset D00004) for this collection only covers English LAs. Coverage also excludes LA codes:

- 001, 003, 167
- codes starting with 6 and 7 except 702 (Service Children's Education, which is valid)
- XXX, MMM and NA

6.2 Assessment parameters

The following combinations of subject, component, assessment method and result type are required (as appropriate).

For KS2 TA:

- KS2-2019-ENG-WRI-TA-NC
- KS2-2019-SCI-SCI-TA-NC

For KS2 pre-key stage:

- KS2-2019-ENG-REA-TA-NC
- KS2-2019-ENG-WRI-TA-NC
- KS2-2019-MAT-MAT-TA-NC

6.3 P scale parameters

In addition to the required parameters above, where the assessment result is 'BLW' then one or more of the following corresponding P scale combinations are required:

- SEN-2019-ENG-ENG-TA-NP
- SEN-2019-ENG-REA-TA-NP
- SEN-2019-ENG-WRI-TA-NP

⁶ www.gov.uk/government/publications/common-basic-data-set-cbds-database

- SEN-2019-ENG-SPE-TA-NP
- SEN-2019-ENG-LIS-TA-NP
- SEN-2019-MAT-MAT-TA-NP
- SEN-2019-MAT-NUM-TA-NP
- SEN-2019-MAT-USE-TA-NP
- SEN-2019-MAT-SSM-TA-NP
- SEN-2019-SCI-SCI-TA-NP



© Crown copyright 2019

This publication (not including logos) is licensed under the terms of the Open Government Licence v3.0 except where otherwise stated. Where we have identified any third party copyright information you will need to obtain permission from the copyright holders concerned.

To view this licence:

visit www.nationalarchives.gov.uk/doc/open-government-licence/version/3

email psi@nationalarchives.gsi.gov.uk

write to Information Policy Team, The National Archives, Kew, London, TW9 4DU

About this publication:

enquiries www.education.gov.uk/contactus

download www.gov.uk/government/publications

Reference: ISBN 978-1-78957-249-0 STA/19/8338/e



Follow us on Twitter:
[@educationgovuk](https://twitter.com/educationgovuk)



Like us on Facebook:
facebook.com/educationgovuk