



# Troubled Families Programme

Helping up to **400,000** families with multiple complex needs

**“I don’t know where I would be if [keyworker] hadn’t come to work with me, I’d lost hope”**

**Mother**

**98%**

Troubled families coordinators say the programme is effective at achieving whole family working.

**78%**

Keyworkers say the programme is effective at achieving long-term change in families’ circumstances.

**95%**

Troubled families employment advisers say the programme is effective at achieving long-term positive change in families’ circumstances.

**Almost 400,000**

families worked with in a whole family way with funding from the programme.

**Over 20,000**

families where one or more adult has succeeded in moving into continuous employment.

**Over 171,000**

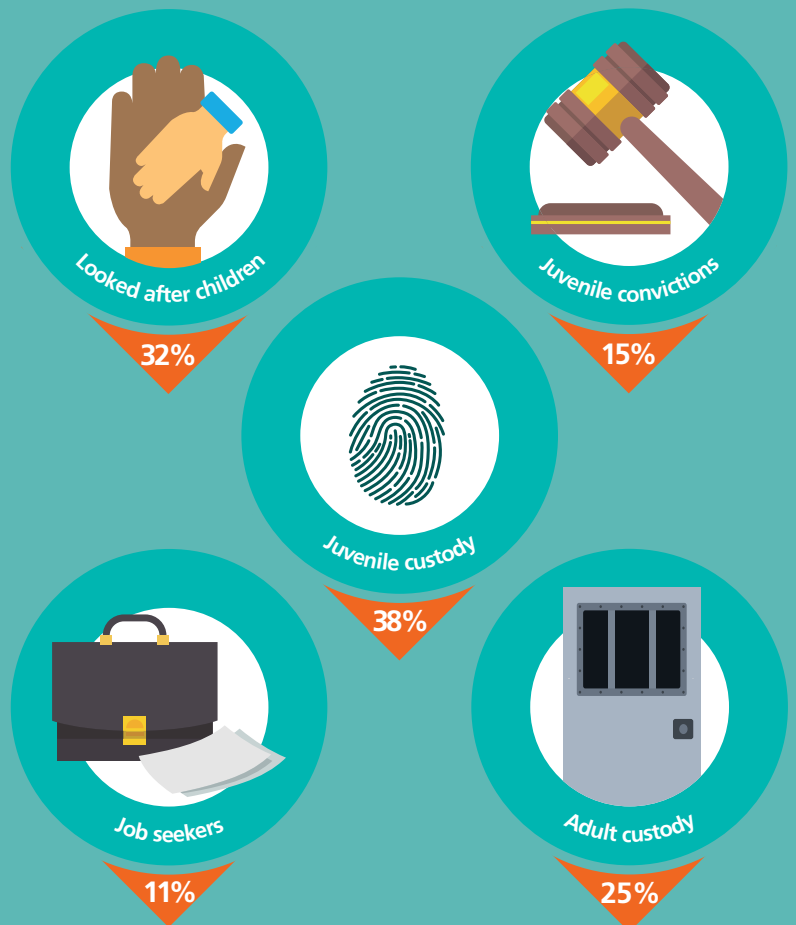
families achieved significant and sustained progress.

## The programme is funding:

- **MORE** early help and keyworkers coordinating support for families
- **INTEGRATION** of services in communities
- **TRAINING** for whole family working
- **INTELLIGENCE** and data sharing to better understand the needs of families and what works
- **COMMUNITY SUPPORT** for families so they are more resilient in the long term

## Better outcomes for families

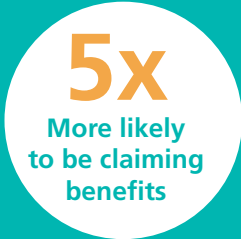
In the 19-24 months after families joined the programme compared to families in the comparison group:



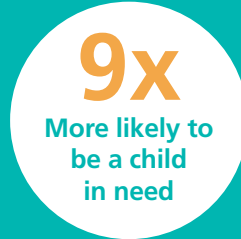
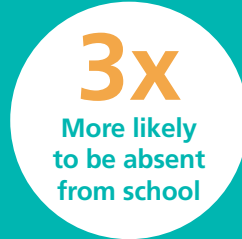
**“It made me want to actually aspire to be like her [keyworker] in the future, and help other mums to see the light”** **Mother**

# Compared to the rest of the population, in the year before starting the programme

adults were:



children were:



Families have at least **two headline** problems:



Local authorities receive payments of up to **£1,800** per family who achieve successful outcomes

The programme achieves its aims through:



A whole family approach means each family has a named lead worker, a full assessment of the problems they face and an agreed plan with stretching goals