

Tell us whether you accept cookies

We use [cookies to collect information](#) about how you use GOV.UK. We use this information to make the website work as well as possible and improve government services.

Accept all cookies

Set cookie preferences



Official Statistics

Non-association independent schools inspections and outcomes in England, August 2018: main findings

Updated 18 December 2019

Contents

- [1. Introduction](#)
- [2. Inspection outcomes profile as at 31 August 2018](#)
- [3. Inspections between 1 September 2017 and 31 August 2018](#)
- [4. Safeguarding](#)
- [5. Compliance with independent school standards](#)
- [6. Revisions](#)
- [7. Notes](#)

This release contains:

- most recent inspections and outcomes as at 31 August 2018
- provisional data for inspections completed between 1 September 2017 and 31 August 2018
- revised data for inspections completed between 1 September 2016 and 31 August 2017

Non-association independent school inspection outcomes have remained broadly the same.

At the end of August 2018, 69% of schools inspected were judged good or outstanding at their most recent inspection. This is one percentage point higher than the proportion judged good or outstanding as at 31 August 2017.

Ineffective safeguarding judgements remain high.

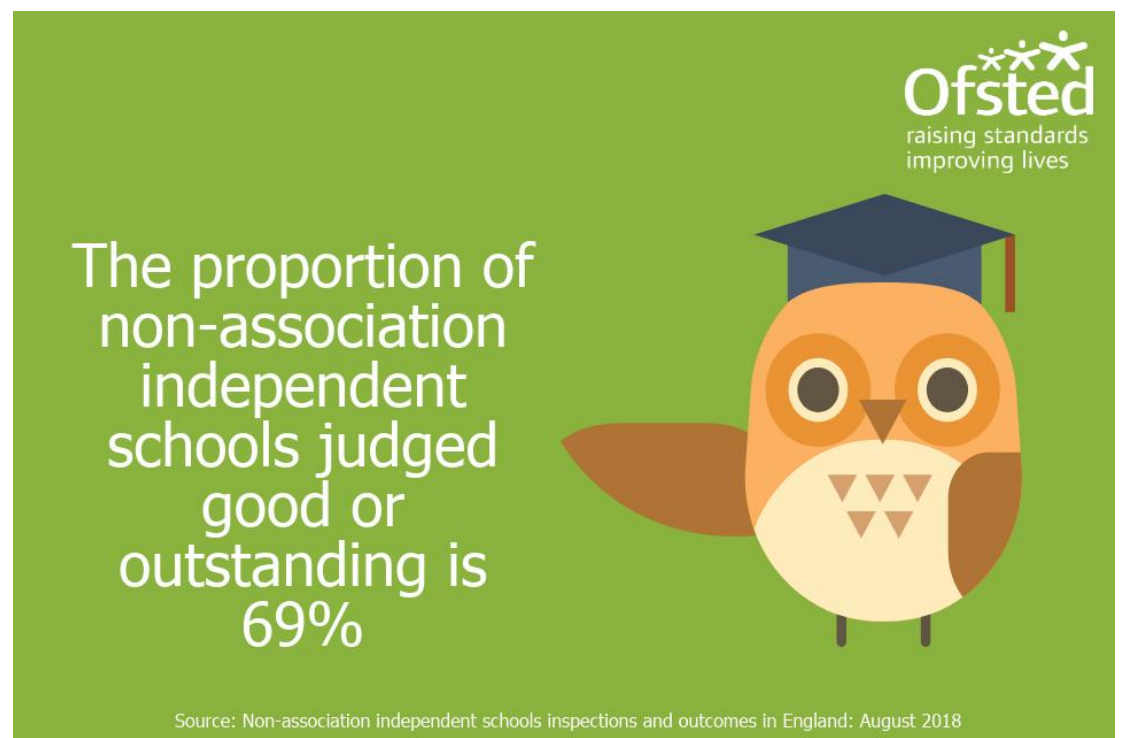
Ten per cent of schools assessed failed the safeguarding judgement.

1. Introduction

There are over 2,300 independent schools in England. Of these Ofsted inspect 1,076 non-association independent schools, which fall into two categories: independent special schools (43%) and other independent schools (57%).

Independent schools, which are members of associations, are inspected by the [Independent Schools Inspectorate](#) (ISI) or the [School Inspection Service](#) (SIS).

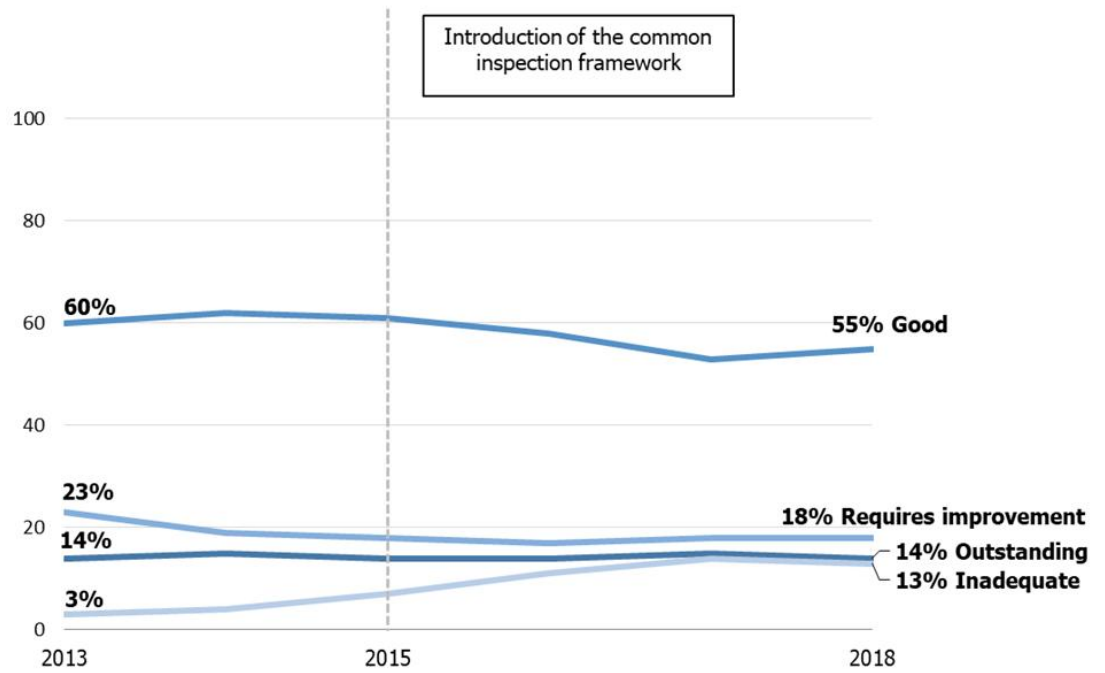
2. Inspection outcomes profile as at 31 August 2018



By the 31 August 2018, 1,011 non-association independent schools had received

a standard inspection¹. Sixty-nine per cent were judged good or outstanding, 18% were judged requires improvement and 13% were judged inadequate at their most recent inspection (Figure 1)². The proportion of schools judged good or outstanding has increased by one percentage point since 31 August 2017.

Figure 1: Overall effectiveness of non-association independent schools at their most recent inspection, since 31 August 2013



2.1 Independent special schools

More independent special schools were judged outstanding, compared with other independent schools

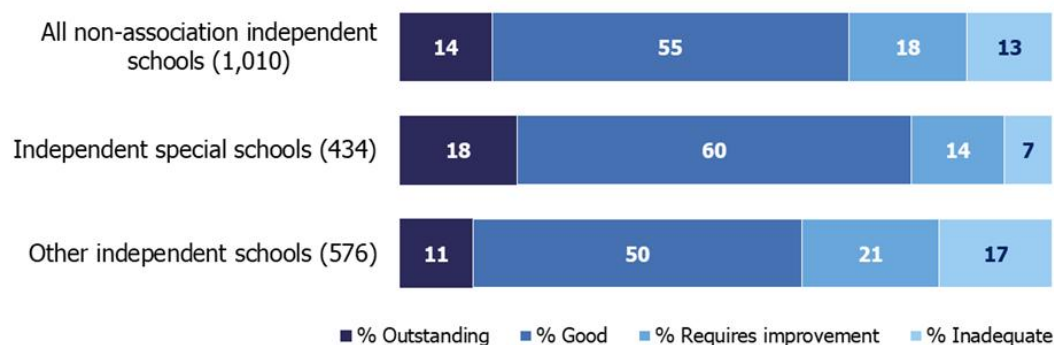
18% of independent special schools compared with **11%** of other independent schools

Source: Non-association independent schools inspections and outcomes in England: August 2018

The proportion of independent special schools judged good or outstanding has remained stable, at 78%, since 31 August 2017. A higher proportion of independent special schools were judged outstanding when compared with other independent schools: 18% and 11%, respectively (Figure 2).

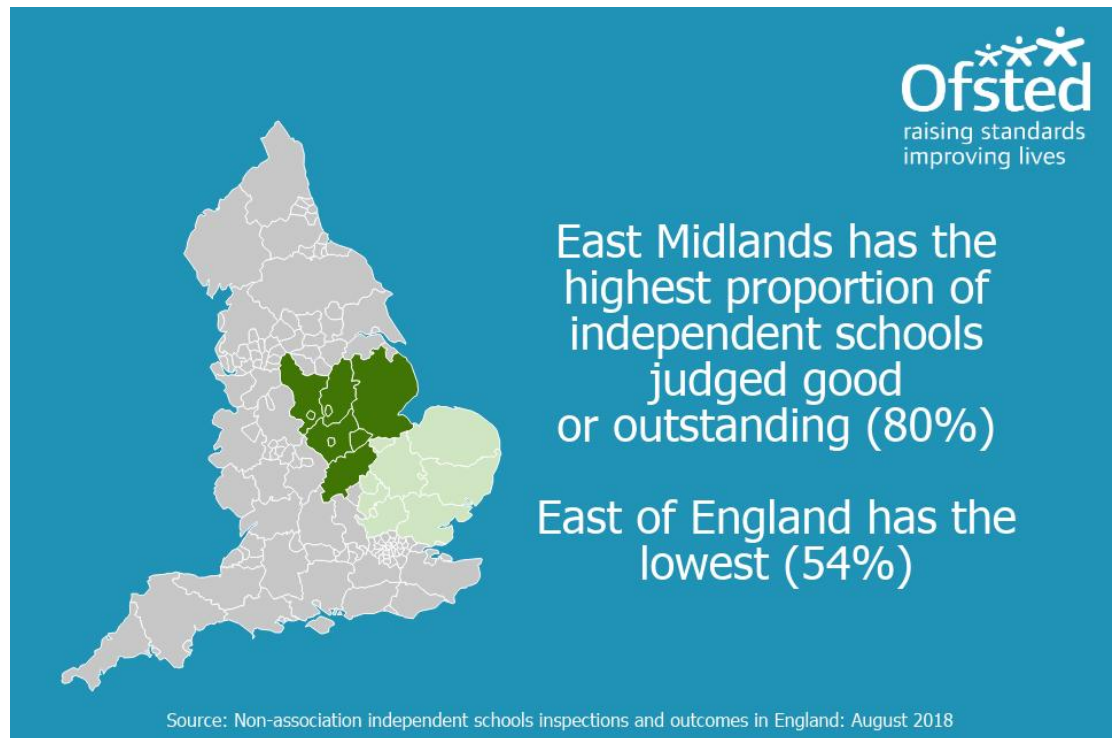
Figure 2: Most recent overall effectiveness of non-association independent schools as at 31 August 2018, by type

Number of schools in brackets



1. Percentages are rounded and may not add to 100.

2.2 Ofsted regions

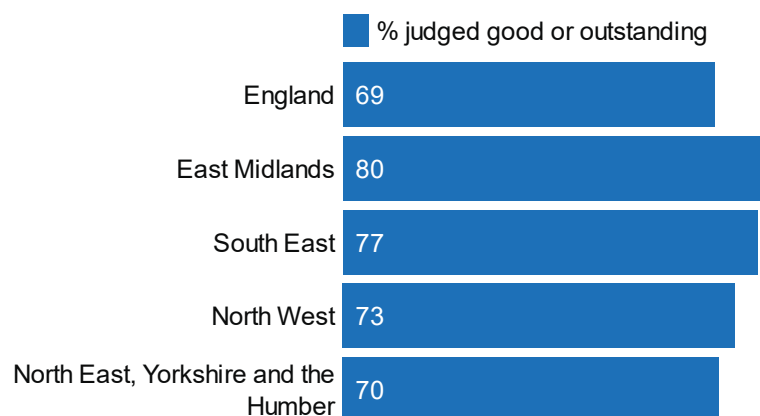


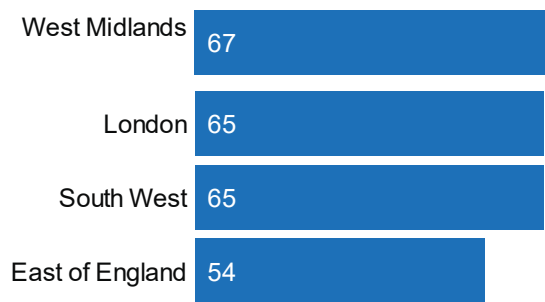
The number of non-association independent schools varies considerably between the Ofsted regions. London has the highest number of schools (272), and the South West has the lowest (70 schools).

Of those inspected, the East Midlands continues to have the highest proportion of schools judged good or outstanding (80%). The East of England has the lowest proportion of schools judged good or outstanding (54%). London and the South West have the highest proportions of inadequate schools (19% and 20% respectively). It is important to note that whilst there is some regional variation, the percentage judged good or outstanding can be influenced by a range of factors.

Table 1: Proportion of non-association independent schools judged good or outstanding as at 31 August 2018, by Ofsted region

[Change between chart and table](#)



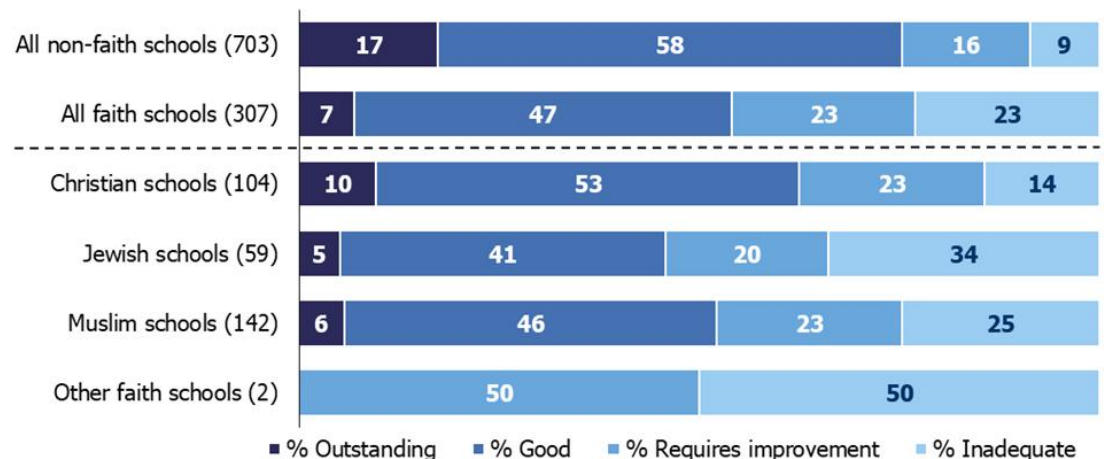


2.3 Independent faith schools

Inspection outcomes for faith schools³ remain substantially weaker than non-faith schools. Three-quarters of non-faith schools were judged good or outstanding compared with just over half of faith schools. Nearly a quarter of all faith schools were judged inadequate at their most recent standard inspection (Figure 4).

Figure 4: Most recent overall effectiveness of non-association independent schools as at 31 August 2018, by faith

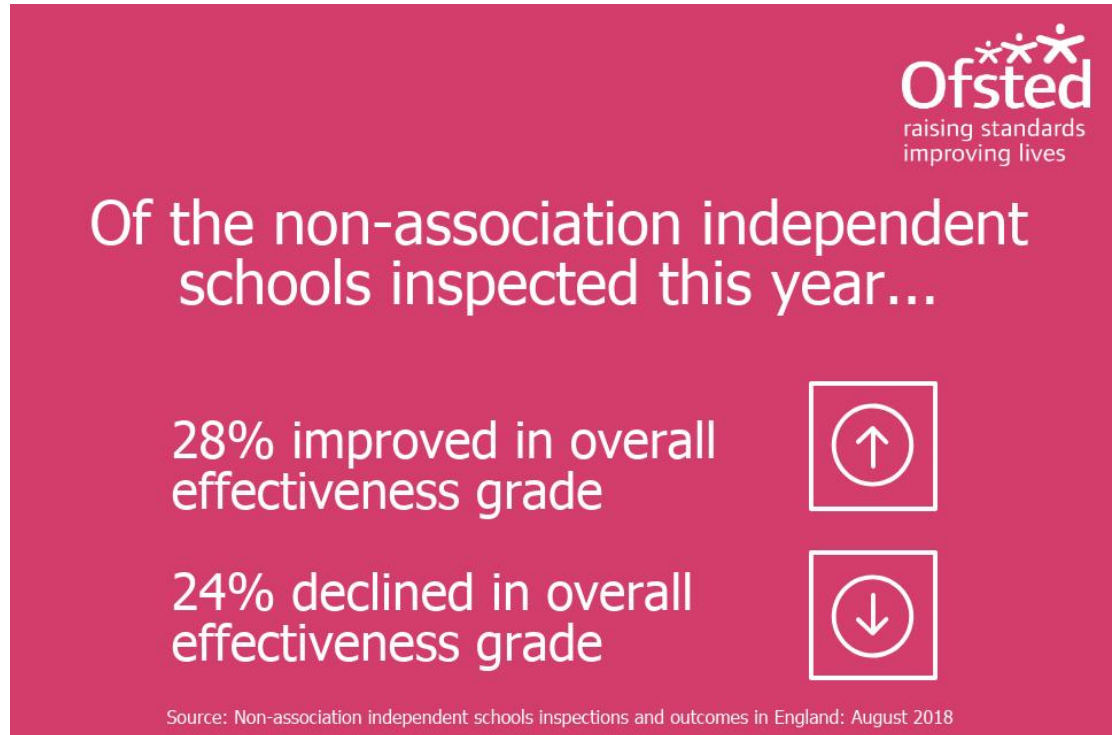
Number of schools in brackets



1. Some percentages are based on small numbers and should be treated with caution.
2. A small number of schools identify as 'inter/non-denominational' or 'multi-faith' and were included as non-faith schools for this analysis.

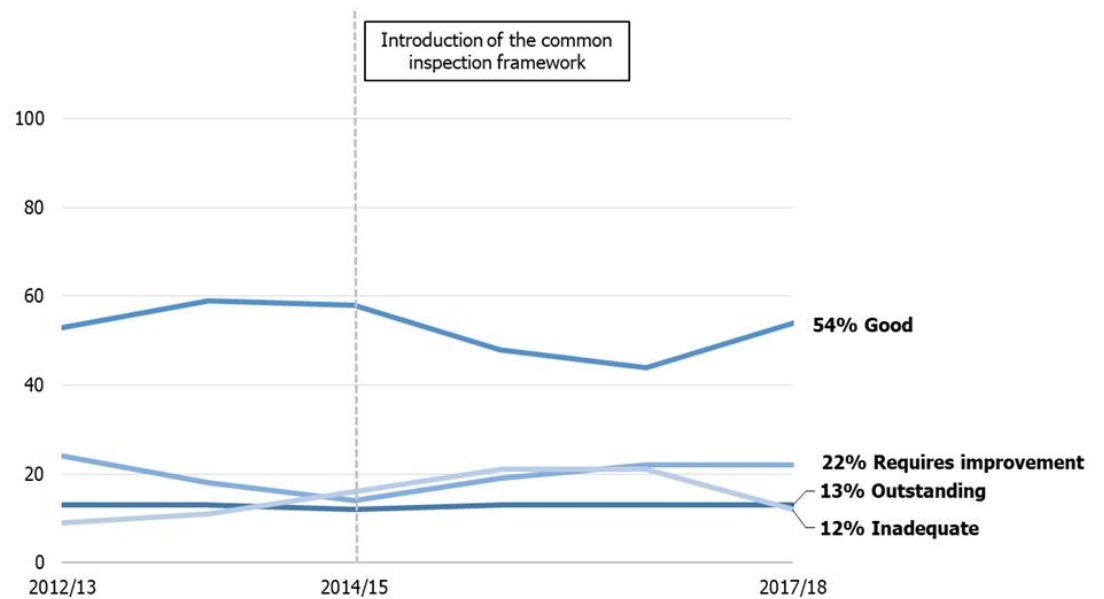
There is variation across the different faith groups. Less than 50% of Jewish schools were judged good or outstanding at their most recent inspection compared with 63% of Christian schools and 52% of Muslim schools. Jewish and Muslim schools were more likely than Christian schools to be inadequate, with 34% of Jewish and 25% of Muslim schools judged inadequate at their most recent inspection compared with 14% of Christian schools (Figure 4).

3. Inspections between 1 September 2017 and 31 August 2018



Between 1 September 2017 and 31 August 2018, Ofsted carried out 553 standard inspections of non-association independent schools ⁴. Twelve per cent of these (65 schools) were judged to be inadequate (Figure 5), with 44 schools being found ineffective for safeguarding.

Figure 5: Overall effectiveness of non-association independent schools inspected in each academic year, since 1 September 2012



1. Percentages are rounded and may not add to 100.

It is important to recognise that because of the way schools are selected for inspection, in any one year, the sample of schools inspected is not necessarily representative of all independent schools. This might partly explain the rise in the proportion of schools judged good this academic year, as well as the decline in schools judged inadequate.

Of the 553 schools inspected, 454 have had a previous inspection. Of these, 108 (24%) declined from their previous inspection, 216 (48%) remained at the same grade, and 128 (28%) improved on their judgement ⁵.

4. Safeguarding



By 31 August 2018,
10% of
independent schools
inspected failed the
safeguarding
judgement

Source: Non-association independent schools inspections and outcomes in England: August 2018

A separate safeguarding judgement was introduced with the [common inspection framework](#) in September 2015. Since then, 982 independent schools have been assessed for safeguarding at their most recent standard inspection. Although the proportion of schools receiving ineffective safeguarding judgements fell by 5 percentage points since last year, it remains high. By 31 August 2018, 10% of schools failed in this judgement.

Independent special schools are more likely to be effective at safeguarding than other independent schools (94% compared with 87%). By 31 August 2018, all schools (97) that had ineffective safeguarding received an overall effectiveness grade of inadequate, as stipulated by the [inspection handbook](#).

5. Compliance with independent school standards



Almost a quarter of independent schools failed to comply with the independent school standards at their most recent inspection

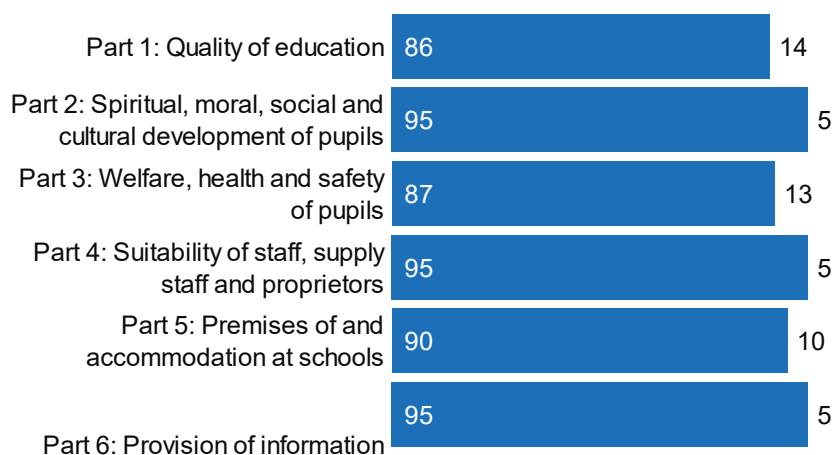
Source: Non-association independent schools inspections and outcomes in England: August 2018

As well as being judged on their overall effectiveness at inspection, non-association independent schools are also judged on their compliance with the 8 parts of the [independent school standards](#). Based on their most recent inspection, 77% of schools met all the standards. No inadequate schools met all the standards.

Schools are least likely to meet the standards in the quality of leadership and management. Just over a fifth of schools did not meet this standard when inspected this academic year (Table 2)⁶. All of the 65 schools judged inadequate this year failed to meet standards for leadership and management.

Table 2: Compliance with standards of non-association independent schools inspected in the current academic year (1 September 2017 – 31 August 2018)

[Change between chart and table](#)



Part 7: Manner in which complaints are to be handled	98	2
Part 8: Quality of leadership in and management of schools	78	22

Ofsted also carry out progress monitoring inspections of schools judged not to have met all standards at their last inspection. The progress made towards meeting these standards was poor this academic year. Of the 118 progress monitoring inspections this year, only 52 schools have now improved to meet the standards checked on these inspections.

6. Revisions

Provisional data indicated that there were 338 standard inspections between 1 September 2016 and 31 August 2017 (published by 30 September 2017). Revised data shows that there were an additional 15 inspections, where the report was published by 30 September 2018. One of these schools was judged good, 2 schools were judged requires improvement and 12 schools were inadequate.

The addition of these inspections changed the profile of overall effectiveness for schools inspected in the last academic year. The proportion of schools judged outstanding fell by one percentage point from 13% to 12%. The proportion of schools judged good fell from 44% to 42% and those schools judged inadequate increased from 21% to 24%. Further details can be found in the revised tables in the [charts and tables file](#) accompanying this release.

Revisions to data in this publication are published in line with [Ofsted's revisions policy for official statistics](#).

7. Notes

Data in this release is from inspections undertaken between 1 September 2017 and 31 August 2018 and most recent inspections of open schools at 31 August 2018, where the inspection report was published by 30 September 2018. If an inspection report is not published by 30 September 2018 then the previous inspection, where available, will be reported as the school's most recent inspection.

From September 2015, data in this official statistics release reflects judgements made on inspections conducted under sections 99, and 109(1) and (2) of the [Education and Skills Act 2008](#). The regulations set out the standards on which inspectors report. This includes the extent to which the school meets the

requirements of the Education (Independent School Standards) Regulations 2014 (referred to as the independent school standards).

The accompanying [methodology and quality report](#) for this release sets out the main uses of this data, further contextual information and arrangements for quality assurance. It also provides information about strengths and limitations of the statistics.

In 2016, the National Statistician published [guidance covering management information and official statistics](#).

8. Further information

8.1 Contact for comments or feedback

If you have any comments or feedback on this publication, please contact Anita Patel on 03000 130 914 or Anita.Patel@ofsted.gov.uk.

8.2 Annual report

Findings from our forthcoming Annual Report will be published on 4 December 2018.

8.3 Acknowledgements

Thanks to the following for their contribution to this statistical release: Folasade Ariyibi, Austen Norris, Jade Price-Stephens and John Willman.

-
1. The remaining schools that have not been inspected are new or those that moved inspectorate and have yet to receive their first inspection. [↩](#)
 2. One school that had a standard inspection did not receive an outcome for overall effectiveness and is excluded. [↩](#)
 3. A school is defined as a faith school based on whether they have declared either a religious character, a religious ethos, or both. This information is updated by the school on [get information about schools](#) (GIAS). [↩](#)
 4. Two schools that had a standard inspection did not receive an outcome for overall effectiveness and are excluded. [↩](#)

5. The data excludes two schools that did not receive an outcome for overall effectiveness at either their current or previous standard inspection. [↵](#)
6. Two inspections did not receive an outcome for the parts of the independent school standards. [↵](#)

Is this page useful? [Yes](#) [No](#)

[Is there anything wrong with this page?](#)

Brexit

[Find out more about Brexit](#)

Services and information

[Benefits](#)

[Births, deaths, marriages and care](#)

[Business and self-employed](#)

[Childcare and parenting](#)

[Citizenship and living in the UK](#)

[Crime, justice and the law](#)

[Disabled people](#)

[Driving and transport](#)

[Education and learning](#)

[Employing people](#)

[Environment and countryside](#)

[Housing and local services](#)

[Money and tax](#)

[Passports, travel and living abroad](#)

[Visas and immigration](#)

[Working, jobs and pensions](#)

Departments and policy

[How government works](#)

[Departments](#)

[Worldwide](#)

[Services](#)

[Guidance and regulation](#)

[News and communications](#)

[Research and statistics](#)

[Policy papers and consultations](#)

[Transparency and freedom of information releases](#)

[Help](#) [Privacy](#) [Cookies](#) [Contact](#) [Accessibility statement](#) [Terms and conditions](#)

Rhestr o Wasanaethau Cymraeg Built by the [Government Digital Service](#)

OGI All content is available under the [Open Government Licence v3.0](#), except where otherwise stated



© Crown copyright