

Statistical bulletin

Employment in the UK: March 2020

Estimates of employment, unemployment and economic inactivity for the UK.



Contact:
Bob Watson
labour.market@ons.gov.uk
+44 (0)1633 455070

Release date:
17 March 2020

Next release:
21 April 2020

Table of contents

1. [Other pages in this release](#)
2. [Main points for November 2019 to January 2020](#)
3. [Employment](#)
4. [Unemployment](#)
5. [Economic inactivity](#)
6. [Employment in the UK data](#)
7. [Glossary](#)
8. [Measuring the data](#)
9. [Strengths and limitations](#)
10. [Related links](#)

1 . Other pages in this release

Other commentary from the latest labour market data can be found on the following pages:

- [Labour market overview](#)
- [Average weekly earnings in Great Britain](#)
- [Vacancies and jobs](#)
- [Single-month Labour Force Survey estimates](#)
- [Reconciliation of estimates of jobs](#)

2 . Main points for November 2019 to January 2020

- The UK employment rate was estimated at a joint record high of 76.5%, 0.4 percentage points higher than a year earlier and 0.3 percentage points up on the previous quarter.
- The UK unemployment rate was estimated at 3.9%, largely unchanged compared with a year earlier and 0.2 percentage points higher than the previous quarter.
- The UK economic inactivity rate was estimated at a record low of 20.4%, 0.3 percentage points lower than the previous year and 0.4 percentage points lower than the previous quarter.

The data in this bulletin come from the Labour Force Survey, a survey of households. It is not practical to survey every household each quarter, so these statistics are estimates based on a large sample.

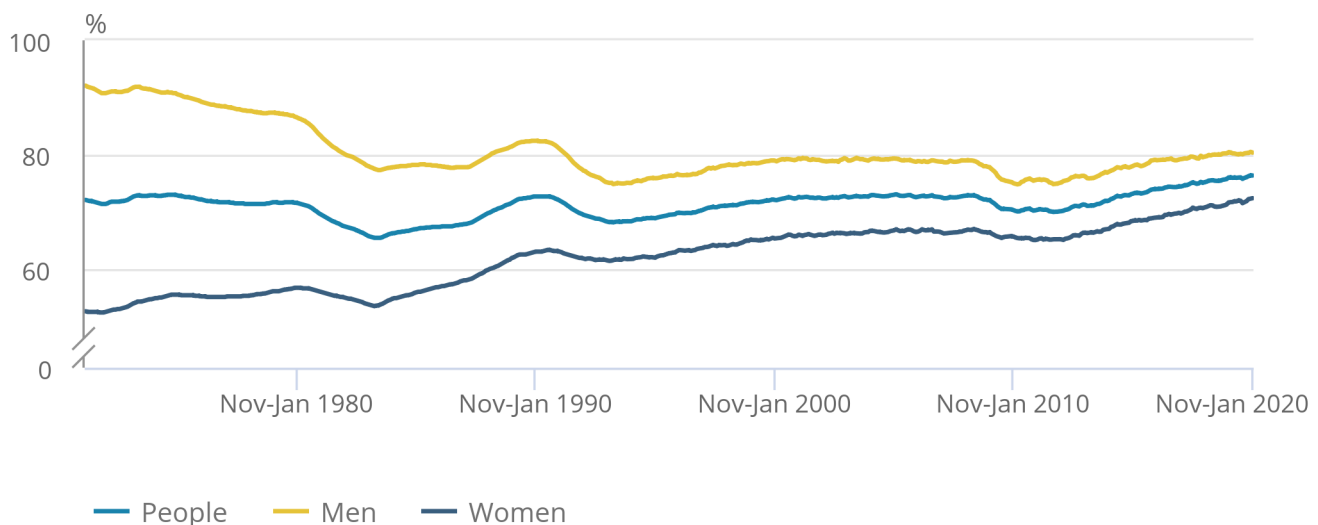
3 . Employment

Figure 1: The employment rate for all people increased by 0.4 percentage points on the year to a joint record high of 76.5%

UK employment rates (aged 16 to 64 years), seasonally adjusted, between January to March 1971 and November 2019 to January 2020

Figure 1: The employment rate for all people increased by 0.4 percentage points on the year to a joint record high of 76.5%

UK employment rates (aged 16 to 64 years), seasonally adjusted, between January to March 1971 and November 2019 to January 2020



Source: Office for National Statistics – Labour Force Survey

[Employment](#) measures the number of people aged 16 years and over in paid work. The employment rate is the proportion of people aged between 16 and 64 years who are in paid work.

Estimated employment rates for people aged between 16 and 64 years have generally been increasing since early 2012. Recent increases have largely been driven by increases in the employment rate for women (Figure 1).

For November 2019 to January 2020:

- the estimated employment rate for people was at a joint record high of 76.5%; this is 0.4 percentage points up on the year and 0.3 percentage points up on the quarter
- the estimated employment rate for men was 80.4%; largely unchanged on the year and 0.1 percentage points up on the quarter
- the estimated employment rate for women was at a record high of 72.5%; this is 0.7 percentage points up on the year and 0.5 percentage points up on the quarter

The increase in the employment rate for women in recent years is partly a result of changes to the State Pension age for women, resulting in fewer women retiring between the ages of 60 and 65 years. However, since the equalisation of the State Pension age, the employment rate for women has continued to rise.

Estimates for November 2019 to January 2020 show a record 32.99 million people aged 16 years and over in employment, 271,000 more than a year earlier. This annual increase was mainly driven by full-time workers (up 345,000 on the year to a record high of 24.46 million), women in employment (up 262,000 to a record high of 15.66 million) and workers aged 50 to 64 years (up 168,000 to 9.31 million). The annual increase in employment was partly offset by the largest decrease for part-time employees since August to October 2011 (down 127,000 on the year to 6.91 million).

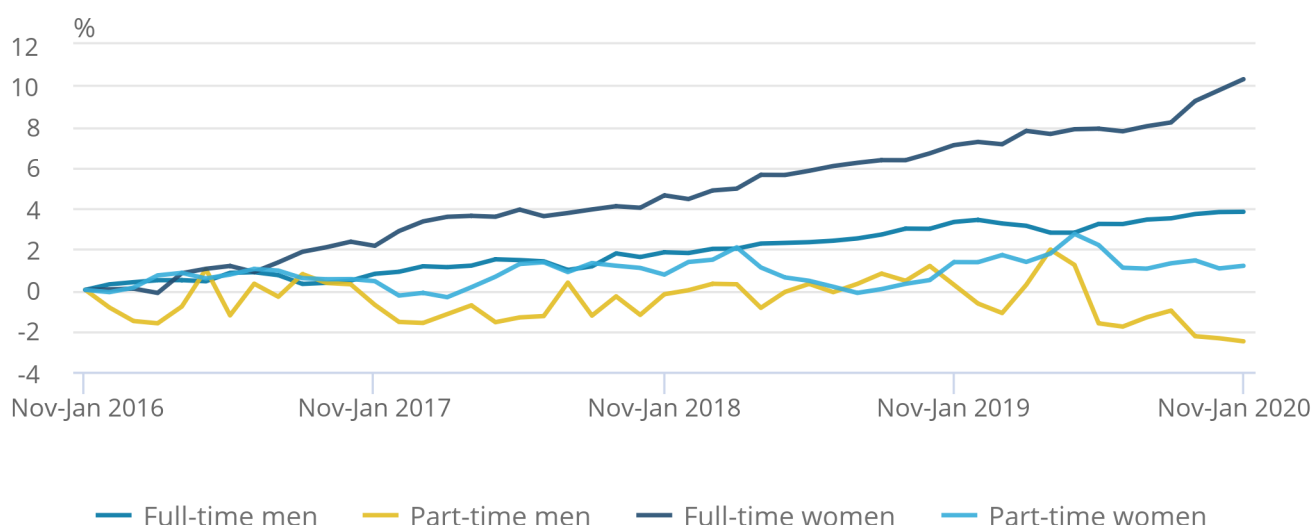
There was a 184,000 increase in employment on the quarter. This was, again, mainly driven by full-time workers (up 225,000; the largest quarterly increase on record) and women in employment (up 171,000; the largest quarterly increase on record). The quarterly increase for women working full-time (up 179,000 to a record high of 9.35 million) was also the largest on record.

Figure 2: The number of women working full-time has increased by 10.3% since November 2015 to January 2016; this is more than double the percentage increase for men

UK employment percentage growth for full-time and part-time men and women (aged 16 years and over), seasonally adjusted, between November 2015 to January 2016 and November 2019 to January 2020

Figure 2: The number of women working full-time has increased by 10.3% since November 2015 to January 2016; this is more than double the percentage increase for men

UK employment percentage growth for full-time and part-time men and women (aged 16 years and over), seasonally adjusted, between November 2015 to January 2016 and November 2019 to January 2020



Source: Office for National Statistics – Labour Force Survey

Increases in the number of full-time workers have been driving increases in employment in recent years, while the number of part-time workers has been relatively flat (Figure 2).

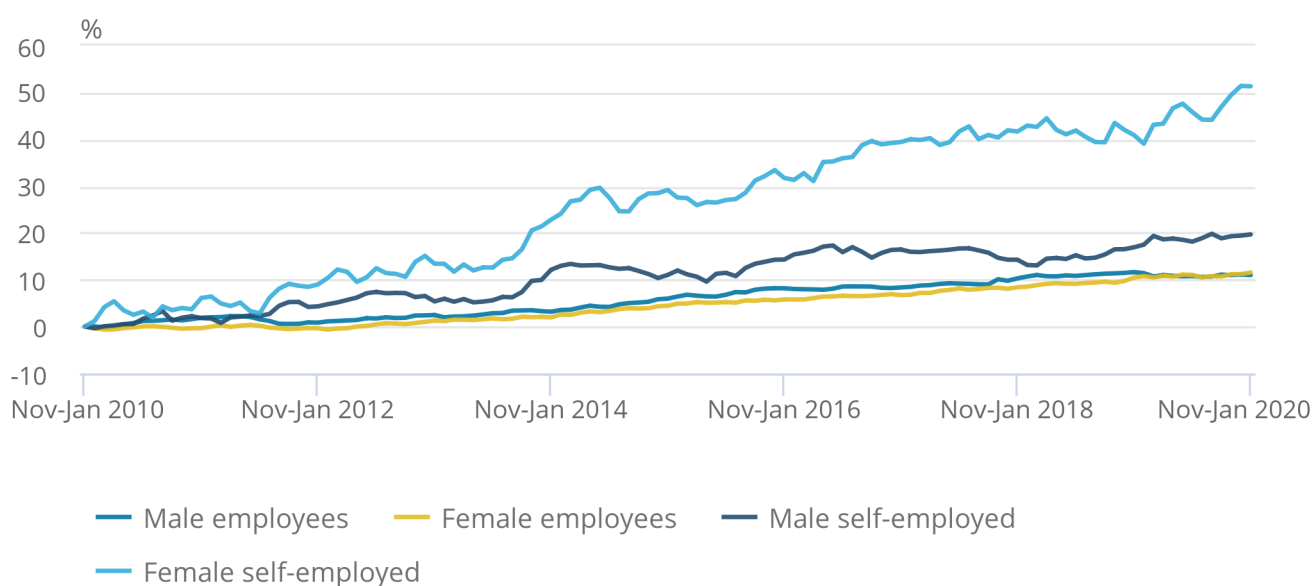
The rate of growth for women working full-time has been consistently higher than for men over the last few years, with women being the main drivers of the strong increase in full-time employment. For November 2019 to January 2020, the number of women working full-time increased by 10.3% compared with the same period four years ago, while the number of men increased by 3.8% over the same period. In comparison, the number of women working part-time increased by 1.2% and the number of men working part-time decreased by 2.5%.

Figure 3: The number of self-employed women has increased by 51.3% over the last 10 years; this is more than double the percentage increase for men

UK percentage growth for employees and self-employed men and women (aged 16 years and over), seasonally adjusted, between November 2009 to January 2010 and November 2019 to January 2020

Figure 3: The number of self-employed women has increased by 51.3% over the last 10 years; this is more than double the percentage increase for men

UK percentage growth for employees and self-employed men and women (aged 16 years and over), seasonally adjusted, between November 2009 to January 2010 and November 2019 to January 2020



Source: Office for National Statistics – Labour Force Survey

Looking at the estimates for November 2019 to January 2020 by type of employment:

- there were a record 27.76 million paid employees (84.2% of all people in employment), 57,000 more than a year earlier
- there were a record 5.03 million self-employed people (15.3% of all people in employment), 194,000 more than a year earlier

Self-employed women only account for around 1 in 20 of all people in employment, however, they have seen the largest rate of increase over the last 10 years. Between November 2009 to January 2010 and November 2019 to January 2020, the estimated number of women in self-employment has grown by 51.3%. Over this period the estimated number of men in self-employment has increased by 19.7%. In comparison, the rate of increase for employees has been more modest, with women increasing by 11.6% and men increasing by 11.0% (Figure 3).

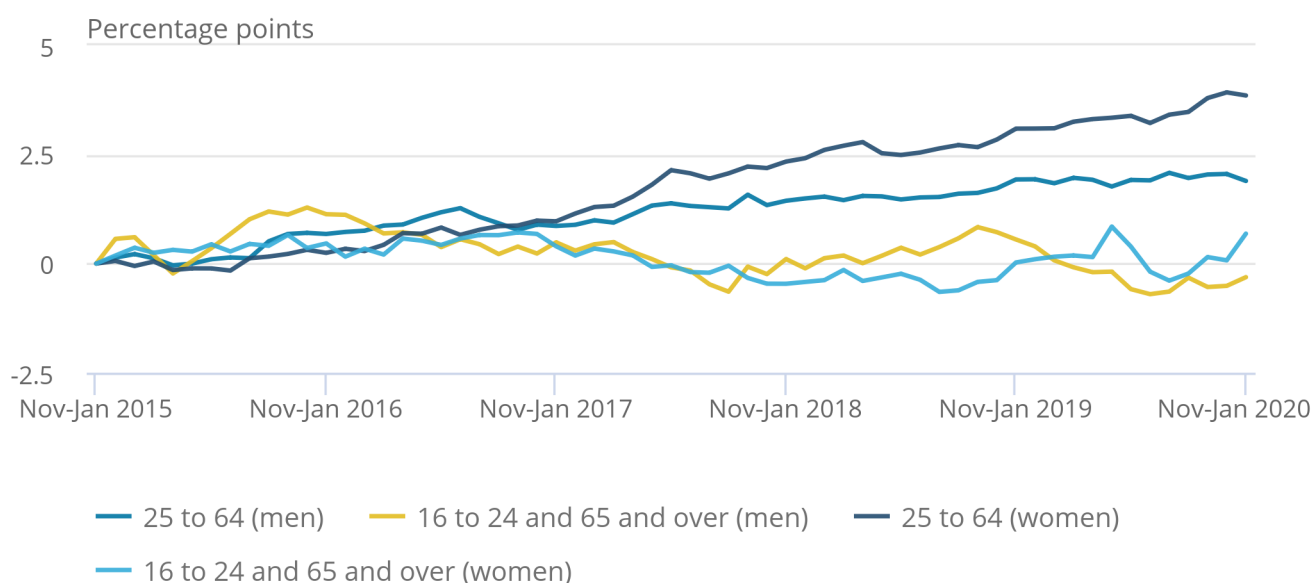
These estimates for paid employees and self-employed people make up over 99% of all people in employment in the UK. The total employment figure also includes two other minor categories as explained in the [guide to labour market statistics](#).

Figure 4: Women aged 25 to 64 years have been the main drivers of the increase in the employment rate over the last five years

UK employment rates change by age and sex, seasonally adjusted, between November 2014 to January 2015 and November 2019 to January 2020

Figure 4: Women aged 25 to 64 years have been the main drivers of the increase in the employment rate over the last five years

UK employment rates change by age and sex, seasonally adjusted, between November 2014 to January 2015 and November 2019 to January 2020



Source: Office for National Statistics – Labour Force Survey

Those aged 25 to 64 years have been driving increases in employment rates in recent years, with the largest increase seen for women. In comparison, employment rates have been relatively flat for younger and older people over the last five years. This is partly because of the different way in which full-time students interact with the labour market (Figure 4).

Hours worked

Since estimates began in 1971, [total hours worked](#) by women have generally increased, reflecting increases in both the employment rate for women and the UK population. In contrast, total hours worked by men have been relatively stable, with the level in November 2019 to January 2020 being close to the level in January to March 1971 (622 million and 628 million hours, respectively). This is because falls in the employment rate for men, and increases in the share of part-time working, have been roughly offset by population increases.

Between November 2018 to January 2019 and November 2019 to January 2020, total actual weekly hours worked in the UK increased by 0.3% (to 1.05 billion hours), while average actual weekly hours decreased by 0.5% (to 31.9 hours). Therefore, the annual increase in total hours was driven by the 0.8% increase in employment over the last year.

In November 2019 to January 2020, the average actual hours worked per week by men decreased by 0.4 hours compared with a year earlier, to a joint record low of 35.9 hours. In contrast, the average actual weekly hours for women increased by 0.2 hours over the year, to 27.4 hours. This increase in average hours for women has offset the decrease in average hours for men and, combined with the increase in employment, has resulted in an annual increase in total actual weekly hours worked of 3.6 million hours.

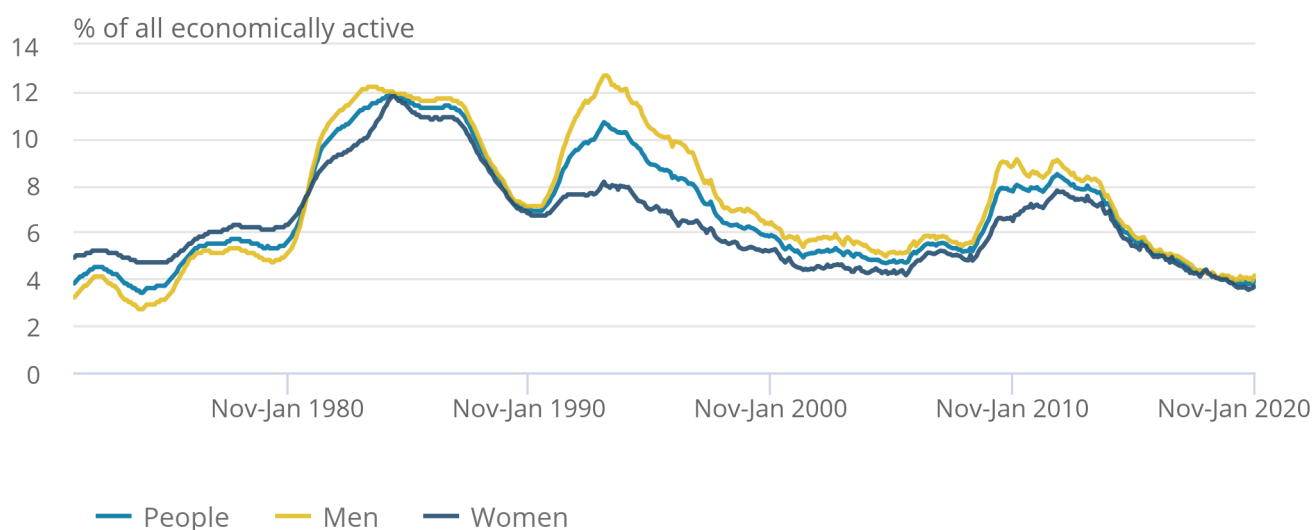
4 . Unemployment

Figure 5: Unemployment rates were at historically low levels

UK unemployment rates (aged 16 years and over), seasonally adjusted, between January to March 1971 and November 2019 to January 2020

Figure 5: Unemployment rates were at historically low levels

UK unemployment rates (aged 16 years and over), seasonally adjusted, between January to March 1971 and November 2019 to January 2020



Source: Office for National Statistics – Labour Force Survey

[Unemployment](#) measures people without a job who have been actively seeking work within the last four weeks and are available to start work within the next two weeks. The unemployment rate is not the proportion of the total population who are unemployed. It is the proportion of the economically active population (those in work plus those seeking and available to work) who are unemployed.

Estimated unemployment rates for both men and women aged 16 years and over have generally been falling since late 2013 but have levelled off in recent periods (Figure 5).

For November 2019 to January 2020:

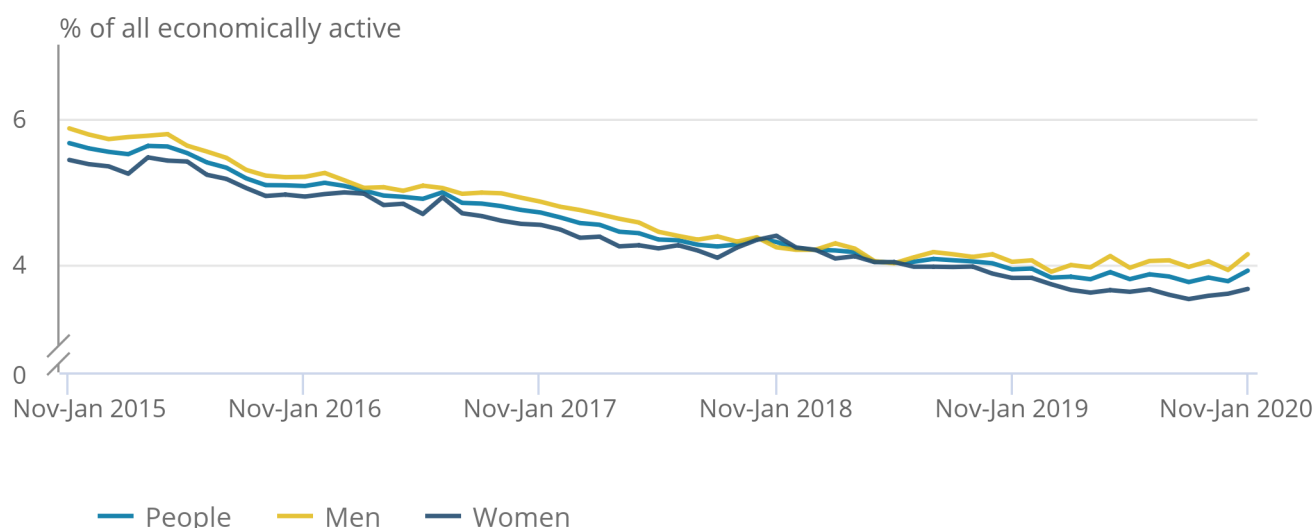
- the estimated UK unemployment rate for all people was 3.9%; this is largely unchanged compared with a year earlier and 0.2 percentage points higher than the previous quarter
- the estimated UK unemployment rate for men was 4.1%; this is 0.1 percentage points higher than a year earlier and 0.2 percentage points higher than the previous quarter
- the estimated UK unemployment rate for women was 3.7%; this is down 0.2 percentage points on the year but up 0.1 percentage points on the quarter.

Figure 6: The steady fall in unemployment rates for men and women over the last few years has levelled in recent periods

UK unemployment rates (aged 16 years and over), seasonally adjusted, between November 2014 to January 2015 and November 2019 to January 2020

Figure 6: The steady fall in unemployment rates for men and women over the last few years has levelled in recent periods

UK unemployment rates (aged 16 years and over), seasonally adjusted, between November 2014 to January 2015 and November 2019 to January 2020



Source: Office for National Statistics – Labour Force Survey

Between November 2014 to January 2015 and November 2019 to January 2020 (Figure 6):

- the estimated unemployment rate for all people fell from 5.7% to 3.9% (slightly above the recent low of 3.8%)
- the estimated unemployment rate for men fell from 5.9% to 4.1% (slightly above the recent low of 3.9%)
- the estimated unemployment rate for women fell from 5.4% to 3.7% (slightly above the recent low of 3.5%)

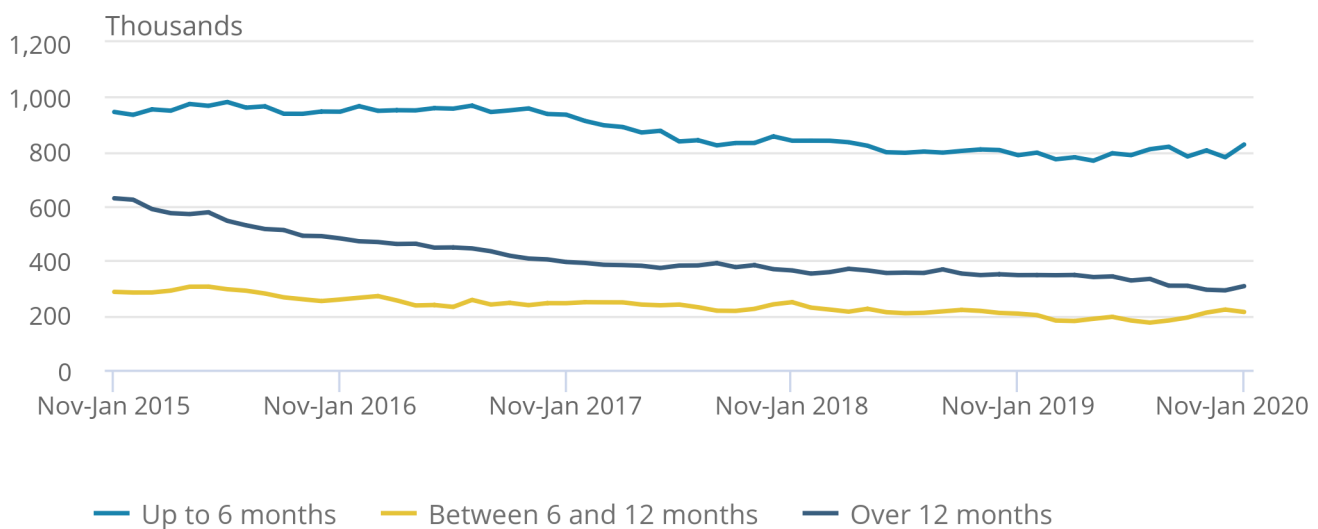
For November 2019 to January 2020, an estimated 1.34 million people were unemployed. This is 5,000 more than a year earlier but 515,000 fewer than five years earlier. The small increase on the year is the first annual increase in unemployment since May to July 2012, and is driven by a 20,000 increase for men.

Figure 7: Long-term unemployment continues to fall

Unemployment in the UK by duration (aged 16 years and over), seasonally adjusted, between November 2014 to January 2015 and November 2019 to January 2020

Figure 7: Long-term unemployment continues to fall

Unemployment in the UK by duration (aged 16 years and over), seasonally adjusted, between November 2014 to January 2015 and November 2019 to January 2020



Source: Office for National Statistics – Labour Force Survey

Looking in more detail at the fall of 515,000 in unemployment over the last five years (Figure 7):

- the estimated number of people unemployed for up to six months fell by 119,000 to 825,000, but has increased by 39,000 over the last year
- for those unemployed for over 6 months and up to 12 months, the number fell by 74,000 to 212,000, but has been broadly flat for the last three years
- the largest fall was for long-term unemployment (those unemployed for over one year), which was down 322,000 to 306,000

5 . Economic inactivity

[Economic inactivity](#) measures people without a job but who are not classed as unemployed because they have not been actively seeking work within the last four weeks and/or they are unable to start work within the next two weeks. Our headline measure of economic inactivity is for those aged between 16 and 64 years.

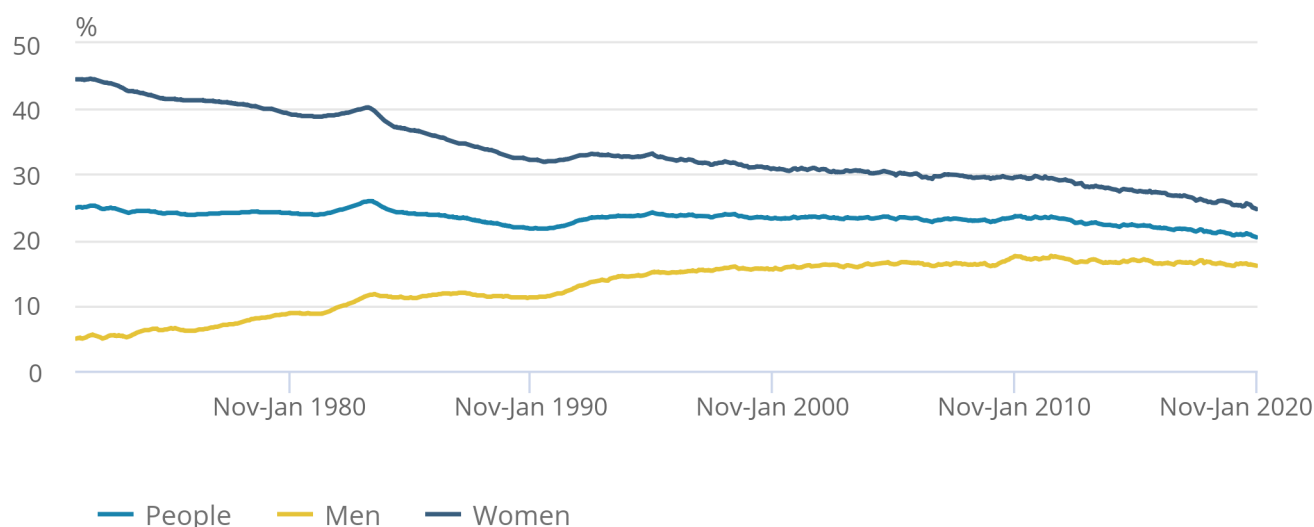
Since comparable records began in 1971, the economic inactivity rate for all people aged between 16 and 64 years has generally been falling (although it increased during recessions). This is because of a gradual fall in the economic inactivity rate for women (as seen in Figure 8). Over recent years, the economic inactivity rate for men has been relatively flat.

Figure 8: The overall economic inactivity rate for people aged between 16 and 64 years was at a record low of 20.4%, down 0.3 percentage points on the year

UK economic inactivity rate (all people aged 16 to 64 years), seasonally adjusted, between January to March 1971 and November 2019 to January 2020

Figure 8: The overall economic inactivity rate for people aged between 16 and 64 years was at a record low of 20.4%, down 0.3 percentage points on the year

UK economic inactivity rate (all people aged 16 to 64 years), seasonally adjusted, between January to March 1971 and November 2019 to January 2020



Source: Office for National Statistics – Labour Force Survey

For people aged between 16 and 64 years, for November 2019 to January 2020:

- the estimated economic inactivity rate for all people was a record low of 20.4%; this is down 0.3 percentage points on the year and down 0.4 percentage points on the quarter
- the estimated economic inactivity rate for men was 16.0%; this is largely unchanged on the year but down 0.2 percentage points on the quarter
- the estimated economic inactivity rate for women was a record low of 24.7%; this is down 0.7 percentage points both on the year and on the quarter

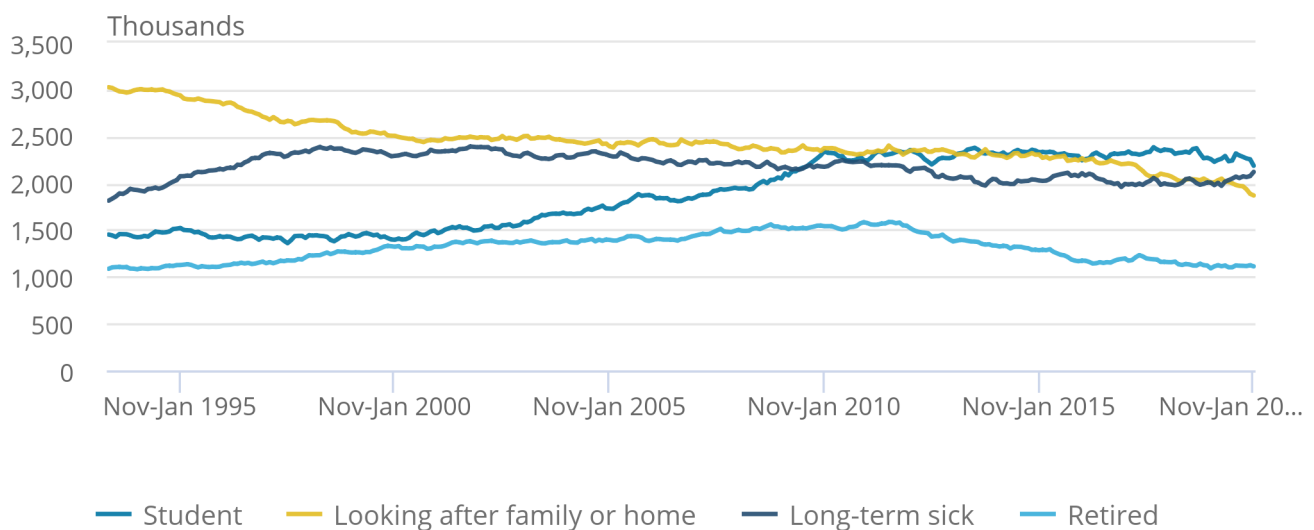
Estimates for November 2019 to January 2020 show 8.43 million people aged between 16 and 64 years not in the labour force (economically inactive). This was 118,000 fewer than a year earlier and 614,000 fewer than five years earlier. The annual decrease was driven by women, with the level down by 129,000 to reach a record low of 5.13 million.

Figure 9: The number of people who are economically inactive because they are looking after the family or home is at a record low

Economically inactive people (aged 16 to 64 years) by reason in the UK, seasonally adjusted, between March to May 1993 and November 2019 to January 2020

Figure 9: The number of people who are economically inactive because they are looking after the family or home is at a record low

Economically inactive people (aged 16 to 64 years) by reason in the UK, seasonally adjusted, between March to May 1993 and November 2019 to January 2020



Source: Office for National Statistics – Labour Force Survey

The estimated fall of 614,000 in economic inactivity over the last five years was largely driven by women, with a decrease of 499,000. This reflects changes to the State Pension age, resulting in fewer women retiring between the ages of 60 and 65 years, as well as more women in younger age groups participating in the labour market.

Looking a little more closely at the fall, the category showing the largest decrease was people looking after the family or home (down 437,000 to a record low of 1.87 million). When the series began in March to May 1993, looking after the family or home was the most common reason for inactivity, comprising 35.3% of the total number of economically inactive people. By November 2019 to January 2020, the share had decreased to 22.2% and it was the third most common reason, behind students (25.9%) and the long-term sick (25.1%).

6 . Employment in the UK data

[Employment, unemployment and economic inactivity](#)

Dataset A05 SA | Released on 17 March 2020

Estimates of UK employment, unemployment and economic inactivity broken down into age bands.

[Full-time, part-time and temporary workers](#)

Dataset EMP01 SA | Released on 17 March 2020

Estimates of UK employment including a breakdown by sex, type of employment, and full-time and part-time working.

[Actual weekly hours worked](#)

Dataset HOUR01 SA | Released on 17 March 2020

Estimates for the hours that people in employment work in the UK.

[Unemployment by age and duration](#)

Dataset UNEM01 SA | Released on 17 March 2020

Estimates of unemployment in the UK including a breakdown by sex, age group and the length of time people are unemployed.

[Economic inactivity by reason](#)

Dataset INAC01 SA | Released on 17 March 2020

Estimates of those not in the UK labour force measured by the reasons given for inactivity.

[Labour Force Survey sampling variability](#)

Dataset A11 | Released on 17 March 2020

Labour Force Survey sampling variability (95% confidence intervals).

7 . Glossary

Actual and usual hours worked

Statistics for [usual hours worked](#) measure how many hours people usually work per week. Compared with [actual hours worked](#), they are not affected by absences and so can provide a better measure of normal working patterns. For example, a person who usually works 37 hours a week but who was on holiday for a week would be recorded as working zero actual hours for that week, while usual hours would be recorded as 37 hours.

Economic inactivity

People not in the labour force (also known as [economically inactive](#)) are not in employment but do not meet the internationally accepted definition of unemployment because they have not been seeking work within the last four weeks and/or are unable to start work in the next two weeks. The economic inactivity rate is the proportion of people aged between 16 and 64 years who are not in the labour force.

Employment

[Employment](#) measures the number of people in paid work or who had a job that they were temporarily away from (for example, because they were on holiday or off sick). This differs from the number of jobs because some people have more than one job. The employment rate is the proportion of people aged between 16 and 64 years who are in employment. A more detailed explanation is available in our [guide to labour market statistics](#).

Unemployment

[Unemployment](#) measures people without a job who have been actively seeking work within the last four weeks and are available to start work within the next two weeks. The unemployment rate is not the proportion of the total population who are unemployed. It is the proportion of the economically active population (that is, those in work plus those seeking and available to work) who are unemployed.

A [more detailed glossary](#) is available.

8 . Measuring the data

This bulletin relies on data collected from the [Labour Force Survey \(LFS\)](#), the largest household survey in the UK.

More quality and methodology information on strengths, limitations, appropriate uses, and how the data were created is available in the [LFS Quality and Methodology Information \(QMI\) report](#).

The [LFS performance and quality monitoring reports](#) provide data on response rates and other quality-related issues for the LFS.

Changing the release dates of ONS statistics to avoid public holidays

Equality of access to official statistics and the access to those who produce them is a fundamental part of the Code of Practice for Statistics. To ensure that there is adequate access, the Office for National Statistics (ONS) avoids publishing statistics on England and Wales public holidays so that there is access to the those who release them on the day of release should there be any queries from the media or other users. However, Northern Ireland and Scotland have their own public holidays which differ from those for England and Wales.

To ensure equal treatment across the UK, from April 2020, we will ensure that any release that contains data for the constituent countries of the UK is not published on a day when government offices are closed in one of the countries. The ONS will involve the devolved administrations in the process of setting the relevant future release dates.

The initial impact of this policy is to move the release date of labour market statistics in July 2020 from Tuesday 14 July (when Northern Ireland government buildings are closed) to Thursday 16 July. The release date in July 2021 will also move from 13 to 15 July. This change will ensure that users across the UK have the same access to advice from the teams who produce the statistics on the day of release. An [official statement](#) has also been published detailing this change.

After EU withdrawal

As the UK leaves the EU, it is important that our statistics continue to be of high quality and are internationally comparable. During the transition period, those UK statistics that align with EU practice and rules will continue to do so in the same way as before 31 January 2020.

After the transition period, we will continue to produce our labour market statistics in line with the UK Statistics Authority's (UKSA's) [Code of Practice for Statistics](#) and in accordance with International Labour Organization (ILO) definitions and agreed international statistical guidance.

9 . Strengths and limitations

The figures in this bulletin come from the Labour Force Survey (LFS), which gathers information from a [sample](#) of households across the UK rather than from the whole population. The sample is designed to be as accurate as possible given practical limitations such as time and cost constraints. Results from sample surveys are always estimates, not precise figures. This can have an impact on how changes in the estimates should be interpreted, especially for short-term comparisons.

As the number of people available in the sample gets smaller, the variability of the estimates that we can make from that sample size gets larger. Estimates for small groups (for example, unemployed people aged between 16 and 17 years), which are based on small subsets of the LFS sample, are less reliable and tend to be more volatile than for larger aggregated groups (for example, the total number of unemployed people).

In general, changes in the numbers (and especially the rates) reported in this bulletin between three-month periods are small and are not usually greater than the level that can be explained by sampling variability. Short-term movements in reported rates should be considered alongside longer-term patterns in the series and corresponding movements in other sources to give a fuller picture.

Comparability

The data in this bulletin follow internationally accepted definitions specified by the [International Labour Organization \(ILO\)](#). This ensures that the estimates for the UK are comparable with those for other countries.

Further information is available in [A guide to labour market statistics](#).

Table 1: Labour Force Survey sampling variability (95% confidence intervals)
Sampling variability (95% confidence intervals) of UK Labour Force Survey estimates, November 2019 to January 2020

	Level	Sampling variability of level (*)	Change on quarter	Sampling variability of change on quarter (*)	Change on year	Sampling variability of change on year (*)
Employment (000s, aged 16 and over)	32,985	± 177	184	± 151	271	± 238
Employment rate (aged 16 to 64)	76.5%	± 0.4	0.3	± 0.3	0.4	± 0.5
Average weekly hours	31.9	± 0.2	-0.3	± 0.2	-0.2	± 0.3
Unemployment (000s, aged 16 and over)	1,343	± 69	63	± 75	5	± 97
Unemployment rate (aged 16 and over)	3.9%	± 0.2	0.2	± 0.2	0.0	± 0.3
Economically active (000s, aged 16 and over)	34,328	± 169	246	± 147	276	± 229
Economic activity rate (aged 16 to 64)	79.6%	± 0.4	0.4	± 0.3	0.3	± 0.5
Economically inactive (000s, aged 16 to 64)	8,431	± 154	-175	± 133	-118	± 208
Economic inactivity rate (aged 16 to 64)	20.4%	± 0.4	-0.4	± 0.3	-0.3	± 0.5
Redundancies (000s, aged 16 and over)	106	± 19	-12	± 28	15	± 26

Source: Office for National Statistics – Labour Force Survey

Notes

1. The sampling variability estimates are for 95% confidence intervals and are calculated on data that are not seasonally adjusted. [Back to table](#)
2. These data are part of data table A11: Labour Force Survey sampling variability, which is part of the Labour market overview, UK release. [Back to table](#)

10 . Related links

[Labour market economic commentary](#)

Article | Released on 17 March 2020

Additional economic analysis of the latest UK labour market headline statistics and long-term trends.

[Labour market in the regions of the UK](#)

Bulletin | Released on 17 March 2020

Regional, local authority and Parliamentary constituency breakdowns of changes in UK employment, unemployment, economic inactivity and other employment-related statistics.

[Public sector employment](#)

Bulletin | Released on 17 March 2020

Quarterly estimates of the number of people employed in the public and private sectors in the UK. The public sector comprises central government, local government and public corporations.

[Young people not in education, employment or training](#)

Bulletin | Released on 27 February 2020

Quarterly bulletin examining estimates of men and women aged between 16 and 24 years in the UK who are not studying or in employment.

[Working and workless households in the UK](#)

Bulletin | Released on 4 March 2020

Commentary on quarterly estimates of the economic status of UK households and the people living in them.

[Improvements to the weighting methodology used in the Labour Force Survey longitudinal datasets](#)

Methodology article | Released on 21 January 2020

Information about the change that has been made and the impact this has on Labour Force Survey (LFS) flows estimates in dataset X02, released 18 February 2020.

Index of Tables

The table below provides an index of the tables appearing in this Statistical Bulletin and it shows how these table numbers match up with the Excel spreadsheet datasets which are available on the website at:

<https://www.ons.gov.uk/employmentandlabourmarket/peopleinwork/employmentandemployeetypes/bulletins/uklabourmarket/march2020/relateddata>

Statistical Bulletin table number	Table description	Dataset
SUMMARY		
1	Labour Force Survey Summary	Dataset A02 SA
2 (*)	Labour market status by age group	Dataset A05 SA
EMPLOYMENT AND JOBS		
3	Full-time, part-time & temporary workers	Dataset EMP01 SA
4	Public and private sector employment	Dataset EMP02
4(1)	Public sector employment by industry	Dataset EMP03
5	Workforce jobs summary	Dataset JOBS01
6 (**)	Workforce jobs by industry	Dataset JOBS02
7	Actual weekly hours worked	Dataset HOUR01 SA
7(1)	Usual weekly hours worked	Dataset HOUR02 SA
NON-UK WORKERS		
8	Employment by country of birth and nationality	Dataset EMP06
8(1)	Unemployment and economic inactivity by country of birth and nationality	Dataset A12
UNEMPLOYMENT		
9	Unemployment by age and duration	Dataset UNEM01 SA
ECONOMIC ACTIVITY AND INACTIVITY		
10(*)	Economic activity by age	Dataset A05 SA
11	Economic inactivity by reason	Dataset INAC01 SA
12	Labour market and educational status of young people	Dataset A06 SA
EARNINGS		
13	Average Weekly Earnings (nominal) - Total pay	Dataset EARN01
14	Average Weekly Earnings (nominal) - Bonus pay	Dataset EARN01
15	Average Weekly Earnings (nominal) - Regular pay	Dataset EARN01
16	Average Weekly Earnings real and nominal (summary table)	Dataset EARN01
INTERNATIONAL SUMMARY		
17	International comparisons of employment and unemployment	Dataset A10
LABOUR DISPUTES		
18	Labour disputes	Dataset LABD01
VACANCIES		
19	Vacancies by size of business	Dataset VACS03
20	Vacancies and unemployment	Dataset VACS01
21	Vacancies by industry	Dataset VACS02
REDUNDANCIES		
22	Redundancies levels and rates	Dataset RED01 SA
REGIONAL SUMMARY		
23	Regional labour market summary	Dataset A07

(*) Tables 2 and 10 in the Statistical Bulletin pdf file have been amalgamated into one spreadsheet (Dataset A05 SA).

(**) Table JOBS02 provides more detail than Table 6 in the Statistical Bulletin pdf file.

The following symbols are used in the tables: p provisional, r revised, .. Not available, * suppressed due to small sample size.

The four-character identification codes appearing in the tables are the ONS references for the data series appearing in the Labour Market Statistics dataset which is available on the website at:

<https://www.ons.gov.uk/employmentandlabourmarket/peopleinwork/employmentandemployeetypes/datasets/labourmarketstatistics>

SUMMARY

1 Summary of headline LFS¹ indicators

United Kingdom (thousands)
seasonally adjusted

		LFS household population ¹		Headline indicators					
		Employment				Unemployment		Inactivity	
		Level		Rate ²		Level		Rate ³	
		All aged 16 & over	All aged 16 to 64	All aged 16 & over	All aged 16 to 64	All aged 16 & over	All aged 16 & over	All aged 16 to 64	All aged 16 to 64
		MGSL	LF2O	MGRZ	LF24	MGSC	MG SX	LF2M	LF2S
People									
	Nov-Jan 2018	52,881	41,204	32,241	75.3	1,451	4.3	8,742	21.2
	Nov-Jan 2019	53,161	41,291	32,714	76.1	1,338	3.9	8,549	20.7
	Feb-Apr 2019	53,229	41,310	32,746	76.1	1,304	3.8	8,581	20.8
	May-Jul 2019	53,298	41,330	32,777	76.1	1,294	3.8	8,587	20.8
	Aug-Oct 2019	53,368	41,355	32,801	76.2	1,281	3.8	8,606	20.8
	Nov-Jan 2020	53,439	41,379	32,985	76.5	1,343	3.9	8,431	20.4
	Change on quarter	71	25	184	0.3	63	0.2	-175	-0.4
	Change %	0.1	0.1	0.6		4.9		-2.0	
	Change on year	278	88	271	0.4	5	0.0	-118	-0.3
	Change %	0.5	0.2	0.8		0.4		-1.4	
Men		MGSM	YBTG	MGSA	MG SV	MGSD	MG SY	YBSO	YBTM
	Nov-Jan 2018	25,860	20,482	17,091	79.8	755	4.2	3,406	16.6
	Nov-Jan 2019	26,019	20,538	17,317	80.5	728	4.0	3,290	16.0
	Feb-Apr 2019	26,056	20,550	17,290	80.3	719	4.0	3,341	16.3
	May-Jul 2019	26,093	20,562	17,261	80.2	710	4.0	3,364	16.4
	Aug-Oct 2019	26,132	20,576	17,315	80.4	715	4.0	3,340	16.2
	Nov-Jan 2020	26,170	20,591	17,327	80.4	748	4.1	3,300	16.0
	Change on quarter	39	14	12	0.1	33	0.2	-39	-0.2
	Change %	0.1	0.1	0.1		4.7		-1.2	
	Change on year	152	53	9	0.0	20	0.1	11	0.0
	Change %	0.6	0.3	0.1		2.7		0.3	
Women		MG SN	LF2P	MG SB	LF25	MG SE	MG SZ	LF2N	LF2T
	Nov-Jan 2018	27,021	20,722	15,150	70.9	696	4.4	5,337	25.8
	Nov-Jan 2019	27,143	20,753	15,396	71.8	611	3.8	5,259	25.3
	Feb-Apr 2019	27,173	20,760	15,456	72.0	586	3.7	5,240	25.2
	May-Jul 2019	27,204	20,768	15,517	72.1	583	3.6	5,223	25.2
	Aug-Oct 2019	27,236	20,778	15,487	72.0	566	3.5	5,266	25.3
	Nov-Jan 2020	27,268	20,789	15,658	72.5	595	3.7	5,130	24.7
	Change on quarter	32	10	171	0.5	29	0.1	-136	-0.7
	Change %	0.1	0.0	1.1		5.2		-2.6	
	Change on year	126	36	262	0.7	-15	-0.2	-129	-0.7
	Change %	0.5	0.2	1.7		-2.5		-2.4	

Source: Labour Force Survey

Labour market statistics enquiries: labour.market@ons.gov.uk

1. The Labour Force Survey (LFS) is a survey of households in the UK.
2. The headline employment rate is the number of people aged 16 to 64 in employment divided by the population aged 16 to 64.
3. The headline unemployment rate is the number of unemployed people (aged 16+) divided by the economically active population (aged 16+). The economically active population is defined as those in employment plus those who are unemployed.
4. The headline inactivity rate is the number of people aged 16 to 64 divided by the population aged 16-64.

Note on headline employment, unemployment and inactivity rates

The headline employment and inactivity rates are based on the population aged 16 to 64 but the headline unemployment rate is based on the economically active population aged 16 and over. The employment and inactivity rates for those aged 16 and over are affected by the inclusion of the retired population in the denominators and are therefore less meaningful than the rates for those aged from 16 to 64. However, for the unemployment rate for those aged 16 and over, no such effect occurs as the denominator for the unemployment rate is the economically active population which only includes people in work or actively seeking and able to work.

Note on headline employment, unemployment and inactivity levels

The headline employment and unemployment levels are for those aged 16 and over; they measure all people in work or actively seeking and able to work. However, the headline inactivity level is for those aged 16 to 64. The inactivity rate for those aged 16 and over is less meaningful as it includes elderly people who have retired from the labour force.

SUMMARY

2(1) Labour market status by age group

United Kingdom (thousands) seasonally adjusted

		Aged 16 and over						Aged 16-64					
		Employment		Unemployment		Inactivity		Employment		Unemployment		Inactivity	
		Level	Rate	Level	Rate	Level	Rate	Level	Rate	Level	Rate	Level	Rate
		MGZR	MGSR	MGSC	MG SX	MGSI	YBTC	LF2G	LF24	LF2I	LF2Q	LF2M	LF2S
People	Nov-Jan 2018	32,241	61.0	1,451	4.3	19,190	36.3	31,028	75.3	1,434	4.4	8,742	21.2
	Nov-Jan 2019	32,714	61.5	1,338	3.9	19,109	35.9	31,425	76.1	1,317	4.0	8,549	20.7
	Feb-Apr 2019	32,746	61.5	1,304	3.8	19,179	36.0	31,443	76.1	1,287	3.9	8,581	20.8
	May-Jul 2019	32,777	61.5	1,294	3.8	19,227	36.1	31,463	76.1	1,280	3.9	8,587	20.8
	Aug-Oct 2019	32,801	61.5	1,281	3.8	19,286	36.1	31,493	76.2	1,256	3.8	8,606	20.8
	Nov-Jan 2020	32,985	61.7	1,343	3.9	19,111	35.8	31,637	76.5	1,311	4.0	8,431	20.4
	Change on quarter	184	0.3	63	0.2	-176	-0.4	144	0.3	55	0.1	-175	-0.4
	Change %	0.6		4.9		-0.9		0.5		4.4		-2.0	
	Change on year	271	0.2	5	0.0	2	-0.2	212	0.4	-6	0.0	-118	-0.3
	Change %	0.8		0.4		0.0		0.7		-0.5		-1.4	
Men		MGSA	MGSS	MGSD	MG SY	MG SJ	YBTD	YBSF	MG SV	YBSI	YBTJ	YBSO	YBTM
	Nov-Jan 2018	17,091	66.1	755	4.2	8,014	31.0	16,335	79.8	741	4.3	3,406	16.6
	Nov-Jan 2019	17,317	66.6	728	4.0	7,973	30.6	16,532	80.5	716	4.1	3,290	16.0
	Feb-Apr 2019	17,290	66.4	719	4.0	8,047	30.9	16,500	80.3	709	4.1	3,341	16.3
	May-Jul 2019	17,261	66.1	710	4.0	8,123	31.1	16,497	80.2	701	4.1	3,364	16.4
	Aug-Oct 2019	17,315	66.3	715	4.0	8,103	31.0	16,538	80.4	699	4.1	3,340	16.2
	Nov-Jan 2020	17,327	66.2	748	4.1	8,096	30.9	16,565	80.4	725	4.2	3,300	16.0
	Change on quarter	12	-0.1	33	0.2	-7	-0.1	28	0.1	26	0.1	-39	-0.2
	Change %	0.1		4.7		-0.1		0.2		3.8		-1.2	
	Change on year	9	-0.4	20	0.1	123	0.3	33	0.0	9	0.0	11	0.0
	Change %	0.1		2.7		1.5		0.2		1.3		0.3	
Women		MG SB	MG ST	MG SE	MG SZ	MG SK	YBTE	LF2H	LF25	LF2J	LF2R	LF2N	LF2T
	Nov-Jan 2018	15,150	56.1	696	4.4	11,175	41.4	14,692	70.9	693	4.5	5,337	25.8
	Nov-Jan 2019	15,396	56.7	611	3.8	11,136	41.0	14,892	71.8	602	3.9	5,259	25.3
	Feb-Apr 2019	15,456	56.9	586	3.7	11,132	41.0	14,943	72.0	578	3.7	5,240	25.2
	May-Jul 2019	15,517	57.0	583	3.6	11,104	40.8	14,966	72.1	579	3.7	5,223	25.2
	Aug-Oct 2019	15,487	56.9	566	3.5	11,184	41.1	14,955	72.0	557	3.6	5,266	25.3
	Nov-Jan 2020	15,658	57.4	595	3.7	11,015	40.4	15,072	72.5	586	3.7	5,130	24.7
	Change on quarter	171	0.6	29	0.1	-169	-0.7	117	0.5	29	0.2	-136	-0.7
	Change %	1.1		5.2		-1.5		0.8		5.2		-2.6	
	Change on year	262	0.7	-15	-0.2	-121	-0.6	180	0.7	-15	-0.1	-129	-0.7
	Change %	1.7		-2.5		-1.1		1.2		-2.6		-2.4	
		Aged 16-17						Aged 18-24					
		Employment		Unemployment		Inactivity		Employment		Unemployment		Inactivity	
		Level	Rate	Level	Rate	Level	Rate	Level	Rate	Level	Rate	Level	Rate
		YBTO	YBUA	YBVH	YBVK	YCAS	LWEX	YBTR	YBUD	YBVN	YBVQ	YCAV	LWFA
People	Nov-Jan 2018	337	23.9	125	27.1	947	67.2	3,480	61.8	410	10.5	1,740	30.9
	Nov-Jan 2019	318	22.9	91	22.2	984	70.6	3,540	63.7	409	10.4	1,608	28.9
	Feb-Apr 2019	339	24.3	86	20.3	967	69.5	3,470	62.7	394	10.2	1,672	30.2
	May-Jul 2019	351	25.2	84	19.3	957	68.8	3,430	62.2	404	10.5	1,681	30.5
	Aug-Oct 2019	348	24.9	87	20.0	965	68.9	3,411	62.1	386	10.2	1,699	30.9
	Nov-Jan 2020	339	24.0	96	22.1	975	69.2	3,482	63.6	410	10.5	1,583	28.9
	Change on quarter	-10	-0.9	9	2.1	10	0.2	71	1.5	24	0.4	-116	-2.0
	Change %	-2.8		10.6		1.0		2.1		6.3		-6.8	
	Change on year	20	1.2	6	0.0	-8	-1.5	-58	-0.1	1	0.2	-25	0.0
	Change %	6.4		6.2		-0.8		-1.6		0.2		-1.5	
Men		YBTP	YBUB	YBVI	YBVL	YCAT	LWEY	YBTS	YBUE	YBVO	YBVR	YCAW	LWFB
	Nov-Jan 2018	162	22.5	62	27.6	497	68.9	1,790	62.3	231	11.4	852	29.7
	Nov-Jan 2019	154	21.6	48	23.6	511	71.7	1,827	64.4	250	12.0	761	26.8
	Feb-Apr 2019	160	22.4	45	22.1	508	71.2	1,764	62.4	248	12.3	816	28.9
	May-Jul 2019	164	23.0	46	22.0	502	70.5	1,745	61.9	246	12.3	826	29.3
	Aug-Oct 2019	157	21.9	52	25.1	508	70.8	1,767	63.0	225	11.3	813	29.0
	Nov-Jan 2020	148	20.5	56	27.5	518	71.7	1,798	64.3	242	11.9	755	27.0
	Change on quarter	-9	-1.4	4	2.4	10	0.9	31	1.3	17	0.6	-58	-2.0
	Change %	-5.6		6.8		2.0		1.7		7.4		-7.1	
	Change on year	-6	-1.1	8	3.8	7	0.0	-29	-0.1	-8	-0.2	-6	0.2
	Change %	-3.9		17.5		1.4		-1.6		-3.2		-0.7	
Women		YBTQ	YBUC	YBVJ	YBVM	YCAU	LWEZ	YBTT	YBUF	YBVP	YBVS	YCA X	LWFC
	Nov-Jan 2018	175	25.4	63	26.7	450	65.4	1,690	61.3	178	9.5	888	32.2
	Nov-Jan 2019	164	24.1	43	20.8	472	69.5	1,713	63.0	159	8.5	847	31.1
	Feb-Apr 2019	179	26.4	41	18.6	459	67.6	1,707	63.0	146	7.9	856	31.6
	May-Jul 2019	187	27.5	37	16.7	454	67.0	1,685	62.4	158	8.6	855	31.7
	Aug-Oct 2019	191	28.0	35	15.3	457	66.9	1,643	61.1	160	8.9	886	32.9
	Nov-Jan 2020	190	27.7	40	17.4	457	66.5	1,683	62.8	168	9.1	828	30.9
	Change on quarter	-1	-0.3	6	2.1	0	-0.5	40	1.7	8	0.2	-58	-2.0
	Change %	-0.5		16.3		0.0		2.5		4.9		-6.5	
	Change on year	26	3.5	-3	-3.3	-15	-3.1	-29	-0.2	9	0.6	-19	-0.3
	Change %	16.1		-6.4		-3.2		-1.7		5.5		-2.3	

Source: Labour Force Survey

Labour market statistics enquiries: labour.market@ons.gov.uk

SUMMARY

2(2) Labour market status by age group

United Kingdom (thousands) seasonally adjusted

People	Aged 25-34						Aged 35-49					
	Employment		Unemployment		Inactivity		Employment		Unemployment		Inactivity	
	Level	Rate	Level	Rate	Level	Rate	Level	Rate	Level	Rate	Level	Rate
	YBTU	YBUG	YCGM	YCGP	YCAV	LWFD	YBTX	YBUJ	YCGS	YCGV	YCBB	LWFG
Nov-Jan 2018	7,452	83.7	291	3.8	1,158	13.0	10,864	84.9	321	2.9	1,617	12.6
Nov-Jan 2019	7,535	84.2	257	3.3	1,153	12.9	10,893	85.4	289	2.6	1,570	12.3
Feb-Apr 2019	7,564	84.5	250	3.2	1,139	12.7	10,871	85.3	293	2.6	1,574	12.4
May-Jul 2019	7,557	84.3	265	3.4	1,141	12.7	10,867	85.4	269	2.4	1,590	12.5
Aug-Oct 2019	7,591	84.7	257	3.3	1,111	12.4	10,892	85.6	260	2.3	1,573	12.4
Nov-Jan 2020	7,615	85.0	258	3.3	1,084	12.1	10,896	85.6	276	2.5	1,551	12.2
Change on quarter	23	0.3	1	0.0	-28	-0.3	3	0.0	17	0.1	-22	-0.2
Change %	0.3		0.5		-2.5		0.0		6.4		-1.4	
Change on year	79	0.8	1	0.0	-70	-0.8	3	0.2	-13	-0.1	-19	-0.1
Change %	1.1		0.5		-6.0		0.0		-4.4		-1.2	
Men	YBTV	YBUH	YCGN	YCGQ	YCAZ	LWFE	YBTY	YBUK	YCGT	YCGW	YCBC	LWFH
Nov-Jan 2018	4,014	90.2	136	3.3	301	6.8	5,722	90.6	151	2.6	446	7.1
Nov-Jan 2019	4,046	90.2	137	3.3	304	6.8	5,753	91.4	128	2.2	414	6.6
Feb-Apr 2019	4,061	90.4	135	3.2	299	6.7	5,739	91.2	134	2.3	417	6.6
May-Jul 2019	4,047	89.9	145	3.4	311	6.9	5,743	91.4	123	2.1	418	6.7
Aug-Oct 2019	4,055	90.1	142	3.4	306	6.8	5,758	91.6	120	2.0	406	6.5
Nov-Jan 2020	4,066	90.3	140	3.3	298	6.6	5,723	91.1	136	2.3	425	6.8
Change on quarter	11	0.2	-2	-0.1	-8	-0.2	-35	-0.6	16	0.3	19	0.3
Change %	0.3		-1.4		-2.6		-0.6		13.5		4.7	
Change on year	20	0.1	2	0.0	-6	-0.1	-31	-0.3	9	0.2	11	0.2
Change %	0.5		1.8		-1.8		-0.5		6.7		2.7	
Women	YBTW	YBUI	YCGO	YCGR	YCBA	LWFF	YBTZ	YBUL	YCGU	YCGX	YCBD	LWFI
Nov-Jan 2018	3,439	77.3	155	4.3	857	19.3	5,142	79.3	170	3.2	1,171	18.1
Nov-Jan 2019	3,489	78.3	119	3.3	849	19.0	5,139	79.6	161	3.0	1,156	17.9
Feb-Apr 2019	3,503	78.6	116	3.2	840	18.8	5,133	79.6	159	3.0	1,157	17.9
May-Jul 2019	3,510	78.7	120	3.3	830	18.6	5,125	79.5	146	2.8	1,171	18.2
Aug-Oct 2019	3,536	79.3	115	3.2	805	18.1	5,134	79.7	140	2.6	1,166	18.1
Nov-Jan 2020	3,549	79.7	118	3.2	785	17.6	5,173	80.3	140	2.6	1,126	17.5
Change on quarter	13	0.4	3	0.1	-20	-0.4	38	0.6	1	0.0	-41	-0.6
Change %	0.4		2.7		-2.5		0.7		0.4		-3.5	
Change on year	60	1.4	-1	-0.1	-64	-1.4	34	0.7	-21	-0.4	-30	-0.4
Change %	1.7		-0.8		-7.5		0.7		-13.1		-2.6	
People	Aged 50-64						Age 65+					
	Employment		Unemployment		Inactivity		Employment		Unemployment		Inactivity	
	Level	Rate	Level	Rate	Level	Rate	Level	Rate	Level	Rate	Level	Rate
	LF26	LF2U	LF28	LF2E	LF2A	LF2W	LFK4	LFK6	K5HU	K5HW	LFL4	LFL6
Nov-Jan 2018	8,894	71.4	286	3.1	3,280	26.3	1,213	10.4	17	1.4	10,447	89.5
Nov-Jan 2019	9,139	72.3	272	2.9	3,234	25.6	1,289	10.9	21	1.6	10,560	89.0
Feb-Apr 2019	9,198	72.5	263	2.8	3,228	25.4	1,303	10.9	17	1.3	10,598	88.9
May-Jul 2019	9,258	72.7	259	2.7	3,218	25.3	1,314	11.0	14	1.0	10,640	88.9
Aug-Oct 2019	9,250	72.4	267	2.8	3,257	25.5	1,309	10.9	24	1.8	10,681	88.9
Nov-Jan 2020	9,307	72.6	271	2.8	3,238	25.3	1,348	11.2	32	2.3	10,680	88.6
Change on quarter	56	0.2	4	0.0	-20	-0.2	39	0.3	7	0.5	-1	-0.3
Change %	0.6		1.4		-0.6		3.0		30.7		0.0	
Change on year	168	0.3	-1	-0.1	4	-0.3	59	0.3	11	0.7	120	-0.4
Change %	1.8		-0.4		0.1		4.6		50.7		1.1	
Men	MGUX	YBUN	MGVM	MGXF	MGWB	LWFK	MGVA	YBUQ	MGVP	MGXI	MGWE	LWFN
Nov-Jan 2018	4,648	76.0	160	3.3	1,310	21.4	756	14.1	15	1.9	4,608	85.7
Nov-Jan 2019	4,751	76.6	153	3.1	1,299	20.9	785	14.3	12	1.5	4,683	85.5
Feb-Apr 2019	4,777	76.7	147	3.0	1,301	20.9	790	14.3	10	1.2	4,707	85.5
May-Jul 2019	4,799	76.8	142	2.9	1,306	20.9	763	13.8	9	1.2	4,759	86.0
Aug-Oct 2019	4,800	76.6	159	3.2	1,306	20.8	777	14.0	16	2.0	4,763	85.7
Nov-Jan 2020	4,830	76.9	151	3.0	1,303	20.7	762	13.6	23	2.9	4,795	85.9
Change on quarter	30	0.2	-8	-0.2	-3	-0.1	-15	-0.3	7	0.9	33	0.2
Change %	0.6		-5.2		-0.2		-2.0		44.4		0.7	
Change on year	78	0.3	-2	-0.1	4	-0.2	-23	-0.7	11	1.4	112	0.5
Change %	1.7		-1.3		0.3		-3.0		85.3		2.4	
Women	LF27	LF2V	LF29	LF2F	LF2B	LF2X	LFK5	LFK7	K5HV	K5HX	LFL5	LFL7
Nov-Jan 2018	4,247	66.9	126	2.9	1,970	31.1	457	7.3	*	*	5,839	92.7
Nov-Jan 2019	4,387	68.1	119	2.6	1,934	30.0	504	7.9	9	1.7	5,877	92.0
Feb-Apr 2019	4,421	68.4	116	2.6	1,927	29.8	514	8.0	8	1.4	5,892	91.9
May-Jul 2019	4,459	68.7	117	2.6	1,912	29.5	551	8.6	*	*	5,881	91.4
Aug-Oct 2019	4,450	68.4	107	2.4	1,951	30.0	531	8.2	9	1.6	5,918	91.6
Nov-Jan 2020	4,477	68.5	119	2.6	1,934	29.6	586	9.0	9	1.5	5,885	90.8
Change on quarter	26	0.2	12	0.2	-17	-0.4	55	0.8	0	-0.1	-33	-0.8
Change %	0.6		11.1		-0.9		10.3		5.1		-0.6	
Change on year	89	0.4	1	0.0	0	-0.4	82	1.2	0	-0.2	7	-1.2
Change %	2.0		0.6		0.0		16.3		2.2		0.1	

Source: Labour Force Survey
Labour market statistics enquiries: labour.market@ons.gov.uk

EMPLOYMENT AND JOBS

3 Full-time, part-time and temporary workers

United Kingdom (thousands of people aged 16 and over) seasonally adjusted

		All in employment					Full-time and part-time workers ¹							Total Workers with second jobs
		Total	Employees	Self employed	Unpaid family workers	Government supported training & employment programmes ²	Total people working full- time	total people working part-time	Employees working full time	Employees working part time	Self- employed people working full- time	Self- employed people working part- time		
People	1	2	3	4	5	6	7	8	9	10	11	12		
	MGRZ	MGRN	MGRQ	MGRT	MGRW	YCBE	YCBH	YCBK	YCBN	YCBQ	YCBT	YCBW		
Nov-Jan 2018	32,241	27,279	4,773	122	66	23,694	8,547	20,283	6,996	3,350	1,424	1,139		
Nov-Jan 2019	32,714	27,703	4,839	127	45	24,118	8,596	20,667	7,035	3,409	1,430	1,141		
Feb-Apr 2019	32,746	27,665	4,913	132	37	24,149	8,597	20,632	7,033	3,471	1,442	1,125		
May-Jul 2019	32,777	27,671	4,928	126	53	24,172	8,605	20,661	7,009	3,456	1,472	1,147		
Aug-Oct 2019	32,801	27,660	4,960	126	55	24,238	8,564	20,712	6,948	3,483	1,477	1,139		
Nov-Jan 2020	32,985	27,760	5,033	134	58	24,463	8,522	20,851	6,908	3,556	1,477	1,171		
Change on quarter	184	100	72	8	3	225	-42	140	-40	73	0	32		
Change %	0.6	0.4	1.5	6.6	5.4	0.9	-0.5	0.7	-0.6	2.1	0.0	2.8		
Change on year	271	57	194	7	13	345	-74	184	-127	147	47	30		
Change %	0.8	0.2	4.0	5.3	29.9	1.4	-0.9	0.9	-1.8	4.3	3.3	2.6		
Men	MGSA	MGRO	MGRR	MGRU	MGRX	YCBF	YCBI	YCBL	YCBO	YCBR	YCBU	YCBX		
Nov-Jan 2018	17,091	13,828	3,169	59	35	14,822	2,269	12,174	1,654	2,615	554	491		
Nov-Jan 2019	17,317	13,995	3,243	54	26	15,037	2,280	12,348	1,647	2,668	575	488		
Feb-Apr 2019	17,290	13,915	3,289	67	19	15,010	2,280	12,301	1,614	2,686	603	472		
May-Jul 2019	17,261	13,893	3,276	57	35	15,024	2,237	12,305	1,587	2,683	593	475		
Aug-Oct 2019	17,315	13,926	3,295	63	30	15,063	2,251	12,336	1,591	2,701	594	486		
Nov-Jan 2020	17,327	13,918	3,318	61	29	15,110	2,217	12,344	1,574	2,732	587	490		
Change on quarter	12	-8	23	-2	-1	46	-34	9	-17	30	-7	4		
Change %	0.1	-0.1	0.7	-2.4	-3.0	0.3	-1.5	0.1	-1.1	1.1	-1.2	0.8		
Change on year	9	-77	76	7	4	72	-63	-3	-74	64	12	2		
Change %	0.1	-0.6	2.3	12.7	14.0	0.5	-2.8	0.0	-4.5	2.4	2.0	0.5		
Women	MGSB	MGRP	MGRS	MGRV	MGRY	YCBG	YCBJ	YCBM	YCBP	YCBS	YCBV	YCBY		
Nov-Jan 2018	15,150	13,451	1,605	63	31	8,872	6,278	8,109	5,342	735	870	648		
Nov-Jan 2019	15,396	13,708	1,596	73	19	9,080	6,316	8,320	5,388	741	855	653		
Feb-Apr 2019	15,456	13,750	1,624	65	18	9,139	6,317	8,331	5,419	785	839	653		
May-Jul 2019	15,517	13,778	1,652	69	18	9,148	6,368	8,356	5,422	773	879	673		
Aug-Oct 2019	15,487	13,734	1,665	63	25	9,174	6,313	8,376	5,358	782	883	652		
Nov-Jan 2020	15,658	13,842	1,714	73	29	9,353	6,305	8,507	5,335	824	890	681		
Change on quarter	171	108	49	10	4	179	-8	131	-23	42	7	28		
Change %	1.1	0.8	3.0	15.5	15.4	2.0	-0.1	1.6	-0.4	5.4	0.8	4.3		
Change on year	262	134	118	0	10	273	-11	187	-53	83	35	27		
Change %	1.7	1.0	7.4	-0.2	51.1	3.0	-0.2	2.3	-1.0	11.2	4.1	4.2		
Temporary employees (reasons for temporary working)														
People	Total	Total as % of all employees	Could not find permanent job	% that could not find permanent job	Did not want permanent job	Had a contract with period of training	Some other reason	Total ⁴	Could not find full- time job	% that could not find full- time job	Did not want full- time job	Ill or disabled	Student or at school	
	13	14	15	16	17	18	19	20	21	22	23	24	25	
	YCBZ	YCCC	YCCF	YCCI	YCCL	YCCO	YCCR	YCCU	YCCX	YCDA	YCDD	YCDG	YCDJ	
Nov-Jan 2018	1,549	5.7	452	29.2	430	152	515	8,420	1,004	11.9	6,000	255	1,099	
Nov-Jan 2019	1,553	5.6	398	25.6	464	128	563	8,465	932	11.0	6,127	260	1,080	
Feb-Apr 2019	1,486	5.4	375	25.2	446	131	534	8,475	933	11.0	6,121	284	1,072	
May-Jul 2019	1,424	5.1	357	25.0	410	124	533	8,481	890	10.5	6,133	278	1,116	
Aug-Oct 2019	1,423	5.1	364	25.6	370	131	557	8,425	875	10.4	6,122	275	1,095	
Nov-Jan 2020	1,446	5.2	363	25.1	410	122	551	8,385	909	10.8	6,048	297	1,081	
Change on quarter	24	0.1	-2	-0.5	40	-9	-6	-40	35	0.5	-74	22	-14	
Change %	1.7	-0.4	-0.4	-0.6	10.9	-6.9	-1.1	-0.5	4.0	-0.2	-1.2	8.2	-1.3	
Change on year	-107	-0.4	-35	-0.6	-54	-6	-12	-80	-22	-0.2	-79	37	1	
Change %	-6.9	-0.4	-8.9	-0.6	-11.6	-4.4	-2.2	-0.9	-2.4	-0.2	-1.3	14.3	0.1	
Men	YCCA	YCCD	YCCG	YCCJ	YCCM	YCCP	YCCS	YCCV	YCCY	YCDB	YCDE	YCDH	YCDK	
Nov-Jan 2018	748	5.4	233	31.1	192	80	243	2,208	449	20.3	1,181	84	464	
Nov-Jan 2019	712	5.1	202	28.4	197	65	248	2,222	416	18.7	1,246	94	447	
Feb-Apr 2019	679	4.9	198	29.2	190	62	228	2,217	406	18.3	1,260	93	432	
May-Jul 2019	647	4.7	183	28.2	164	60	241	2,180	370	17.0	1,255	92	439	
Aug-Oct 2019	673	4.8	186	27.7	158	69	259	2,184	374	17.1	1,262	89	437	
Nov-Jan 2020	687	4.9	175	25.5	189	64	259	2,160	375	17.3	1,243	102	426	
Change on quarter	15	0.1	-11	-2.3	32	-5	0	-24	1	0.2	-19	13	-11	
Change %	2.2	-0.1	-6.1	-2.3	20.0	-7.6	0.0	-1.1	0.3	-0.2	-1.5	14.7	-2.5	
Change on year	-24	-0.1	-27	-3.0	-8	-1	12	-62	-41	-1.4	-3	7	-21	
Change %	-3.4	-0.1	-13.5	-3.9	-3.9	-1.8	4.8	-2.8	-9.9	-0.2	-0.2	7.9	-4.7	
Women	YCCB	YCCE	YCCH	YCCK	YCCN	YCCQ	YCCT	YCCW	YCCZ	YCDC	YCDE	YCDI	YCDL	
Nov-Jan 2018	802	6.0	219	27.4	238	72	272	6,212	555	8.9	4,820	170	635	
Nov-Jan 2019	841	6.1	196	23.3	268	63	315	6,243	516	8.3	4,881	166	633	
Feb-Apr 2019	806	5.9	176	21.9	256	68	306	6,257	527	8.4	4,861	191	640	
May-Jul 2019	777	5.6	174	22.4	247	64	292	6,301	520	8.3	4,878	186	677	
Aug-Oct 2019	750	5.5	178	23.7	212	62	298	6,241	501	8.0	4,860	186	658	
Nov-Jan 2020	759	5.5	188	24.8	221	58	291	6,225	535	8.6	4,806	196	655	
Change on quarter	9	0.0	10	1.0	9	-4	-6	-16	34	0.6	-54	9	-3	
Change %	1.2	0.0	5.5	4.2	3.8	-6.1	-2.1	-0.3	6.7	0.7	-1.1	5.0	-0.4	
Change on year	-83	-0.7	-8	1.5	-46	-4	-24	-18	19	0.3	-76	30	22	
Change %	-9.8	-0.7	-4.1	1.5	-17.3	-7.0	-7.6	-0.3	3.6	0.3	-1.6	17.9	3.5	

Relationship between columns: 1= 2+3+4+5; 1=6+7; 2=8+9; 3=10+11; 13=15+17+18+19; 20=9+11; 14=13/2; 16=15/13; 22=21/20

Source: Labour Force Survey

1. The split between full-time and part-time employment is based on respondents' self-classification.

Labour market statistics enquiries: labour.market@ons.gov.uk

2. This series does not include all people on these programmes; it only includes those engaging in any form of work, work experience or work-related training.

3. These series cover Employees and Self-employed only. These series include some temporary employees recorded in columns 13 to 19.

4. The total includes those who did not give a reason for working part-time and it therefore does not equal the sum of columns 21, 23, 24 and 25.

EMPLOYMENT AND JOBS

7 Actual weekly hours worked

United Kingdom (hours worked by people aged 16 and over), seasonally adjusted

	Total weekly hours (millions) ¹²	Average (mean) actual weekly hours worked			
		All workers ¹	Full-time workers ³	Part-time workers ³	Second Jobs
		YBUS	YBUY	YBVB	YBVE
People					
Nov-Jan 2018	1,034.6	32.1	37.3	16.2	9.9
Nov-Jan 2019	1,047.5	32.0	37.2	16.2	9.7
Feb-Apr 2019	1,054.1	32.2	37.4	16.3	9.7
May-Jul 2019	1,049.8	32.0	37.2	16.3	9.7
Aug-Oct 2019	1,055.7	32.2	37.3	16.4	9.8
Nov-Jan 2020	1,051.1	31.9	36.9	16.1	9.8
Change on quarter	-4.6	-0.3	-0.4	-0.2	0.0
Change %	-0.4	-1.0	-1.1	-1.4	0.3
Change on year	3.6	-0.2	-0.3	-0.1	0.1
Change %	0.3	-0.5	-0.9	-0.4	1.3
Men					
Nov-Jan 2018	623.5	36.5	39.3	15.9	10.8
Nov-Jan 2019	629.5	36.4	39.1	16.3	10.4
Feb-Apr 2019	629.5	36.4	39.1	16.3	10.7
May-Jul 2019	625.8	36.3	38.9	16.4	10.3
Aug-Oct 2019	628.3	36.3	39.0	16.2	10.6
Nov-Jan 2020	622.0	35.9	38.5	15.9	10.9
Change on quarter	-6.2	-0.4	-0.4	-0.3	0.4
Change %	-1.0	-1.1	-1.1	-1.9	3.5
Change on year	-7.4	-0.4	-0.6	-0.4	0.5
Change %	-1.2	-1.2	-1.4	-2.6	4.5
Women					
Nov-Jan 2018	411.1	27.1	34.1	16.3	9.1
Nov-Jan 2019	418.0	27.2	34.1	16.2	9.1
Feb-Apr 2019	424.6	27.5	34.6	16.3	9.0
May-Jul 2019	423.9	27.3	34.3	16.3	9.2
Aug-Oct 2019	427.4	27.6	34.7	16.4	9.2
Nov-Jan 2020	429.1	27.4	34.3	16.2	9.0
Change on quarter	1.6	-0.2	-0.4	-0.2	-0.2
Change %	0.4	-0.7	-1.1	-1.2	-2.2
Change on year	11.0	0.2	0.1	0.1	-0.1
Change %	2.6	0.9	0.4	0.4	-1.1

Source: Labour Force Survey

Labour market statistics enquiries: labour.market@ons.gov.uk

1 Main and second job

2 Total actual weekly hours worked including paid and unpaid overtime.

3 Main job only. The split between full-time and part-time employment is based on respondents' self-classification.

7 (1) Usual weekly hours of work¹

United Kingdom, seasonally adjusted

	All in Employment (%)			Employees (%)			Self-Employed (%)		
	People	Men	Women	People	Men	Women	People	Men	Women
Nov-Jan 2019									
Less than 6 Hours	1.4	0.9	2.0	0.9	0.6	1.3	3.3	1.7	6.4
6 up to 15 hours	6.3	3.5	9.5	5.7	3.1	8.5	9.2	4.9	18.0
16 up to 30 hours	20.1	10.4	31.1	19.7	8.9	30.6	22.9	16.4	36.0
31 up to 45 hours	54.1	59.9	47.6	56.7	63.1	50.3	39.5	46.4	25.4
Over 45 hours	18.1	25.4	9.9	17.0	24.4	9.4	25.2	30.6	14.2
Total (thousands)	32,714	17,317	15,396	27,703	13,995	13,708	4,839	3,243	1,596
Aug-Oct 2019									
Less than 6 Hours	1.5	0.9	2.0	1.0	0.7	1.3	3.4	1.7	6.9
6 up to 15 hours	6.4	3.5	9.5	5.8	3.1	8.5	8.7	4.8	16.5
16 up to 30 hours	19.6	10.0	30.3	19.0	8.4	29.7	23.2	16.3	36.7
31 up to 45 hours	54.2	60.1	47.5	57.0	63.6	50.3	38.8	45.8	25.0
Over 45 hours	18.5	25.4	10.7	17.2	24.2	10.2	25.8	31.4	14.9
Total (thousands)	32,801	17,315	15,487	27,660	13,926	13,734	4,960	3,295	1,665
Nov-Jan 2020									
Less than 6 Hours	1.4	0.9	2.0	1.0	0.6	1.4	2.9	1.9	5.1
6 up to 15 hours	6.3	3.4	9.5	5.7	3.0	8.5	8.8	4.3	17.3
16 up to 30 hours	19.1	9.7	29.5	18.5	8.3	28.8	22.8	15.8	36.4
31 up to 45 hours	55.0	60.9	48.6	57.8	64.3	51.3	40.3	46.7	27.8
Over 45 hours	18.1	25.1	10.4	16.9	23.8	10.0	25.3	31.3	13.5
Total (thousands)	32,985	17,327	15,658	27,760	13,918	13,842	5,033	3,318	1,714

1 Total usual weekly hours worked by people aged 16 and over in main job including paid and unpaid overtime.

Source: Labour Force Survey

Labour market statistics enquiries: labour.market@ons.gov.uk

NON-UK WORKERS

8(1) Employment levels and rates by country of birth and nationality

(First published on 18 February 2020)

United Kingdom (thousands of people aged 16 and over) not seasonally adjusted																				
Country of birth	Europe										Africa		Asia			America and Oceania				
	European Union (EU)										Other Europe (not in EU)	Total Africa	Of which: South Africa	Total Asia	Of which: India	Of which: Pakistan and Bangladesh	Total America and Oceania	Of which: USA	Of which: Australia and New Zealand	Total Non-EU ⁷
	Total ¹	UK	Non UK	Total Europe	Total EU (EU27) ²	EU14 ³	EU8 ⁴	EU2 ⁵	Other EU ⁶											
Levels (aged 16 and over)	MGTM	JF6F	JF6G	FSC2	EQ4Q	JJR3	JJR5	EQ4R	FSC3	FSC4	FSC5	JJS3	FSC6	JJS7	JJS9	FSC7	JJR7	JJS5	EQ4S	
Oct - Dec 2017	32,230	26,659	5,568	2,617	2,378	995	992	357	34	239	869	171	1,492	465	352	591	99	145	3,190	
Oct - Dec 2018	32,671	27,011	5,651	2,550	2,303	989	886	384	43	248	893	174	1,568	476	344	640	107	130	3,349	
Jan - Mar 2019	32,641	26,838	5,796	2,666	2,420	994	947	438	41	246	933	200	1,536	452	366	662	108	139	3,376	
Apr - Jun 2019	32,752	26,967	5,777	2,692	2,438	1,019	971	407	41	254	923	198	1,504	475	387	658	105	167	3,339	
Jul - Sep 2019	32,802	27,028	5,770	2,630	2,368	1,020	953	356	40	261	962	176	1,532	483	373	646	93	166	3,401	
Oct - Dec 2019	32,983	27,171	5,809	2,704	2,436	1,026	970	400	40	269	937	171	1,544	490	373	624	95	169	3,373	
Change on year	313	160	158	154	133	37	84	16	-3	21	44	-2	-24	13	30	-16	-13	39	25	
Change %	1.0	0.6	2.8	6.1	5.8	3.7	9.4	4.2	-8.1	8.6	4.9	-1.4	-1.5	2.8	8.7	-2.5	-11.7	29.9	0.7	
Nationality	MGTM	JF6H	JF6I	FSC8	EQ4U	JJR4	JJR6	EQ4V	FSC9	FSCE	FSD2	JJS4	FSD3	JJS8	JJT2	FSD4	JJR8	JJS6	EQ4W	
Oct - Dec 2017	32,230	28,726	3,500	2,430	2,335	1,007	959	361	9	95	266	63	508	177	86	296	91	89	1,165	
Oct - Dec 2018	32,671	29,098	3,569	2,400	2,274	1,011	869	370	24	126	277	64	593	194	107	299	96	71	1,295	
Jan - Mar 2019	32,641	28,943	3,698	2,513	2,381	1,018	925	423	16	132	273	71	597	182	115	315	101	75	1,317	
Apr - Jun 2019	32,752	29,084	3,661	2,490	2,368	1,019	952	375	22	122	289	63	567	187	121	314	78	95	1,292	
Jul - Sep 2019	32,802	29,209	3,589	2,367	2,238	981	903	333	21	129	297	56	599	210	126	326	68	107	1,351	
Oct - Dec 2019	32,983	29,325	3,654	2,439	2,310	994	931	367	17	129	298	68	602	199	126	316	75	107	1,344	
Change on year	313	227	85	39	36	-16	62	-2	-8	3	20	4	9	5	19	17	-21	36	49	
Change %	1.0	0.8	2.4	1.6	1.6	-1.6	7.2	-0.6	-31.4	2.4	7.3	6.7	1.6	2.5	18.0	5.6	-21.8	51.1	3.8	
Rates (aged 16 to 64)	LF9D	LFM6	LFM7	FSD5	EQ4Y	LFM8	LFM9	EQ4Z	FSD6	FSD7	FSD8	LFN4	FSD9	LFN6	LFN7	FSE2	LFN2	LFN5	EQ52	
Oct - Dec 2017	75.3	75.8	73.5	80.5	81.6	77.6	85.4	83.6	72.9	70.9	70.9	82.1	63.7	73.5	56.2	78.6	77.3	86.3	68.5	
Oct - Dec 2018	76.0	76.3	74.7	81.6	82.6	79.8	86.1	83.5	71.8	73.0	73.3	84.7	65.5	75.5	55.9	77.6	79.1	85.7	70.1	
Jan - Mar 2019	75.9	76.3	74.6	81.8	82.8	80.1	85.1	84.6	79.1	72.7	73.1	88.2	64.6	75.3	57.6	77.8	78.4	84.7	69.7	
Apr - Jun 2019	76.0	76.3	74.6	82.2	83.1	80.2	85.2	86.2	78.3	74.4	73.2	87.4	63.4	75.5	59.0	78.6	73.9	87.7	69.3	
Jul - Sep 2019	76.2	76.3	75.6	82.5	83.3	80.6	86.1	84.6	76.0	76.1	74.9	84.9	65.4	77.0	57.9	79.2	78.2	88.8	71.0	
Oct - Dec 2019	76.6	76.8	75.6	82.0	83.1	80.9	85.7	82.7	78.0	73.5	74.2	82.3	65.7	78.7	56.7	80.2	79.1	87.8	70.9	
Change on year	0.6	0.5	0.9	0.4	0.5	1.2	-0.4	-0.8	6.1	0.5	0.9	-2.5	0.2	3.2	0.7	2.6	0.0	2.1	0.8	
Nationality	LF9D	LFN8	LFN9	FSE3	EQ54	LFO2	LFO3	EQ55	FSE4	FSE5	FSE6	LFO6	FSE7	LFO8	LFO9	FSE8	LFO4	LFO7	EQ56	
Oct - Dec 2017	75.3	75.5	74.2	80.3	81.1	77.3	85.3	84.1	38.0	64.7	65.3	84.8	56.1	67.3	52.7	78.2	79.5	84.5	63.3	
Oct - Dec 2018	76.0	76.0	75.8	82.6	83.3	81.0	86.0	84.5	68.9	72.3	70.5	86.6	58.3	69.7	48.4	77.0	73.7	86.1	65.6	
Jan - Mar 2019	75.9	76.1	75.3	82.1	82.7	79.9	85.0	84.9	75.0	72.9	68.8	91.4	57.2	70.6	50.9	76.9	78.3	82.7	64.8	
Apr - Jun 2019	76.0	76.1	75.0	82.5	83.3	80.8	85.0	85.9	83.7	69.5	70.7	90.2	54.3	69.3	53.8	76.8	73.1	86.3	63.4	
Jul - Sep 2019	76.2	76.2	76.2	82.5	82.8	80.3	85.5	83.5	83.7	76.3	71.8	87.1	59.4	73.1	55.4	78.1	74.2	92.0	67.2	
Oct - Dec 2019	76.6	76.7	76.0	81.9	82.4	80.3	85.4	81.0	80.0	73.4	69.0	85.8	60.3	74.6	55.2	78.5	77.2	87.8	66.9	
Change on year	0.6	0.7	0.1	-0.7	-0.8	-0.6	-0.6	-3.6	11.1	1.1	-1.5	-0.9	2.0	4.9	6.8	1.6	3.5	1.7	1.3	

Source: Labour Force Survey

Labour market statistics enquiries: labour.market@ons.gov.uk

1. The total series includes people who do not state their country of birth or nationality. The total levels series MGTM does not therefore equal the sum of the "UK" and "Non-UK" series.

2. This series consists of all 27 EU member states excluding the UK. This series equals the sum of EU14, EU8, EU2 and Other EU.

3. Austria, Belgium, Denmark, Finland, France, Germany, Greece, Ireland, Italy, Luxembourg, Netherlands, Portugal, Spain and Sweden.

4. Czech Republic, Estonia, Hungary, Latvia, Lithuania, Poland, Slovak Republic and Slovenia.

5. Romania and Bulgaria.

6. Cyprus, Malta and Croatia.

7. Total Non-EU equals the sum of Other Europe, Total Africa, Total Asia and Total America and Oceania, and excludes the UK.

The estimates shown in this table relate to the number of people in employment and should not be used as a proxy for flows of foreign migrants into the UK.

NON-UK WORKERS

8(2) Unemployment and economic inactivity levels and rates by country of birth and nationality

(first published on 18 February 2020)

United Kingdom (thousands of people) not seasonally adjusted

	Unemployment (all aged 16 and over)					Economically inactive (all aged from 16 to 64)									
	Total ¹	UK	Non-UK	EU27 ²	Non-EU ³	Total ¹		UK		Non-UK		EU27 ²		Non-EU ³	
						All econom- ically inactive	Of which: Students ⁴	All econom- ically inactive	Of which: Students ⁴	All econom- ically inactive	Of which: Students ⁴	All econom- ically inactive	Of which: Students ⁴	All econom- ically inactive	Of which: Students ⁴
Levels (thousands of people)															
By country of birth	MGTP	DSWD	DT35	DT3F	DTKB	LF9L	LF9W	DTLK	DYUP	DYUR	DYVR	DYVZ	DYWL	DYWR	DZ37
Oct - Dec 2017	1,425	1,142	283	78	205	8,751	2,318	7,055	1,807	1,685	511	450	174	1,234	337
Oct - Dec 2018	1,328	1,068	260	78	182	8,598	2,228	6,957	1,757	1,623	470	399	161	1,224	309
Jan - Mar 2019	1,292	1,013	279	84	195	8,663	2,373	6,992	1,851	1,654	521	409	159	1,245	362
Apr - Jun 2019	1,296	1,015	280	74	206	8,659	2,350	7,006	1,864	1,640	485	414	159	1,226	327
Jul - Sep 2019	1,374	1,115	259	72	187	8,503	2,089	6,933	1,687	1,556	401	395	125	1,161	276
Oct - Dec 2019	1,268	1,030	237	85	152	8,450	2,223	6,844	1,769	1,596	455	403	130	1,193	325
Change on year	-60	-37	-23	7	-29	-148	-5	-113	11	-28	-15	4	-31	-31	16
Change %	-4.5	-3.5	-8.7	8.7	-16.2	-1.7	-0.2	-1.6	0.6	-1.7	-3.2	0.9	-19.5	-2.5	5.3
By nationality	MGTP	DSWE	DT39	DTG9	DTKC	LF9L	LF9W	DYTC	DYUQ	DYUS	DYVU	DYWA	DYWM	DYWS	DZGD
Oct - Dec 2017	1,425	1,240	184	90	94	8,751	2,318	7,716	1,946	1,021	371	447	182	574	189
Oct - Dec 2018	1,328	1,154	173	76	97	8,598	2,228	7,630	1,892	954	335	377	165	577	170
Jan - Mar 2019	1,292	1,107	185	86	99	8,663	2,373	7,631	1,982	1,018	390	409	166	609	223
Apr - Jun 2019	1,296	1,110	186	71	114	8,659	2,350	7,621	1,981	1,023	366	399	162	624	204
Jul - Sep 2019	1,374	1,206	168	76	92	8,503	2,089	7,546	1,801	940	287	382	125	558	162
Oct - Dec 2019	1,268	1,102	165	87	79	8,450	2,223	7,456	1,900	976	323	398	143	578	180
Change on year	-60	-52	-8	11	-19	-148	-5	-174	7	22	-12	21	-21	1	9
Change %	-4.5	-4.5	-4.7	14.0	-19.3	-1.7	-0.2	-2.3	0.4	2.3	-3.6	5.7	-13.0	0.2	5.5
Rates (%)															
By country of birth	MGUK	DT2W	DT3B	DTJG	DTKD	CRZK		DYTD		DYUT		DYWD		DYWT	
Oct - Dec 2017	4.2	4.1	4.8	3.2	6.0	21.2		20.9		22.7		15.7		27.1	
Oct - Dec 2018	3.9	3.8	4.4	3.3	5.1	20.8		20.6		21.9		14.6		26.1	
Jan - Mar 2019	3.8	3.6	4.6	3.4	5.5	21.0		20.8		21.8		14.3		26.3	
Apr - Jun 2019	3.8	3.6	4.6	2.9	5.8	21.0		20.8		21.7		14.4		26.3	
Jul - Sep 2019	4.0	4.0	4.3	3.0	5.2	20.6		20.5		20.9		14.1		25.0	
Oct - Dec 2019	3.7	3.7	3.9	3.4	4.3	20.4		20.2		21.3		14.0		25.9	
Change on year	-0.2	-0.1	-0.5	0.1	-0.8	-0.4		-0.4		-0.6		-0.6		-0.3	
By nationality	MGUK	DT2Z	DT3D	DTKA	DTLH	CRZK		DYUO		DYUU		DYWE		DZ36	
Oct - Dec 2017	4.2	4.1	5.0	3.7	7.5	21.2		21.1		21.9		15.7		31.6	
Oct - Dec 2018	3.9	3.8	4.6	3.2	7.0	20.8		20.8		20.5		14.0		29.5	
Jan - Mar 2019	3.8	3.7	4.8	3.5	7.0	21.0		20.9		21.0		14.4		30.3	
Apr - Jun 2019	3.8	3.7	4.8	2.9	8.1	21.0		20.9		21.2		14.2		31.0	
Jul - Sep 2019	4.0	4.0	4.5	3.3	6.4	20.6		20.6		20.2		14.4		28.1	
Oct - Dec 2019	3.7	3.6	4.3	3.6	5.5	20.4		20.4		20.6		14.4		29.1	
Change on year	-0.2	-0.2	-0.3	0.4	-1.5	-0.4		-0.5		0.1		0.5		-0.4	

Source: Labour Force Survey
Labour market statistics enquiries: labour.market@ons.gov.uk

1. The total series includes people who do not state their country of birth or nationality. The total levels series therefore do not equal the sum of the "UK" and "Non-UK" series.
2. This series consists of all 27 EU member states excluding the UK.
3. This series consists of all countries outside the EU excluding the UK.
4. This series consists of those people whose main reason for being economically inactive was because they were students. It does not include all students as some students will be included in the employment and unemployment estimates.

UNEMPLOYMENT

9(1) Unemployment by age and duration

United Kingdom (thousands) seasonally adjusted

		All aged 16 & over							All aged 16 - 64						
		All	Rate (%) ¹	Up to 6 months	Over 6 and up to 12 months	All over 12 months	% over 12 months	All over 24 months	All	Rate (%) ¹	Up to 6 months	Over 6 and up to 12 months	All over 12 months	% over 12 months	All over 24 months
		1	2	3	4	5	6	7	8	9	10	11	12	13	14
People		MGSC	MGSX	YBWF	YBWG	YBWH	YBWI	YBWL	LF2I	LF2Q	LF2Y	LF32	LF34	LF36	LF38
	Nov-Jan 2018	1,451	4.3	839	247	364	25.1	188	1,434	4.4	825	243	365	25.4	187
	Nov-Jan 2019	1,338	3.9	786	205	347	25.9	169	1,317	4.0	772	202	344	26.1	166
	Feb-Apr 2019	1,304	3.8	779	178	347	26.6	168	1,287	3.9	773	177	337	26.2	163
	May-Jul 2019	1,294	3.8	786	180	327	25.3	171	1,280	3.9	782	179	320	25.0	167
	Aug-Oct 2019	1,281	3.8	782	191	308	24.0	158	1,256	3.8	771	187	299	23.8	151
	Nov-Jan 2020	1,343	3.9	825	212	306	22.8	165	1,311	4.0	810	201	300	22.9	156
	Change on quart	63	0.2	44	20	-1	-1.2	7	55	0.1	40	14	1	-0.9	6
	Change %	4.9		5.6	10.7	-0.5		4.5	4.4		5.2	7.6	0.4		3.8
	Change on year	5	0.0	39	6	-40	-3.1	-5	-6	0.0	39	-1	-44	-3.2	-9
	Change %	0.4		5.0	3.0	-11.7		-2.7	-0.5		5.0	-0.4	-12.8		-5.6
Men		MGSD	MGSY	MGYK	MGYM	MGYO	YBWJ	YBWM	YBSI	YBTJ	YBWP	YBWS	YBWW	YBWW	YBWB
	Nov-Jan 2018	755	4.2	399	142	214	28.4	120	741	4.3	388	138	214	28.9	119
	Nov-Jan 2019	728	4.0	396	120	212	29.1	111	716	4.1	389	118	209	29.2	108
	Feb-Apr 2019	719	4.0	401	103	214	29.8	107	709	4.1	399	102	208	29.3	106
	May-Jul 2019	710	4.0	402	106	202	28.5	110	701	4.1	399	105	197	28.1	107
	Aug-Oct 2019	715	4.0	413	108	193	27.0	102	699	4.1	407	104	188	26.9	98
	Nov-Jan 2020	748	4.1	445	123	180	24.1	96	725	4.2	435	112	178	24.5	92
	Change on quart	33	0.2	32	14	-13	-2.9	-6	26	0.1	28	8	-10	-2.4	-6
	Change %	4.7		7.6	13.2	-6.5		-5.8	3.8		6.9	7.8	-5.3		-6.5
	Change on year	20	0.1	49	2	-31	-4.9	-16	9	0.0	46	-6	-31	-4.7	-17
	Change %	2.7		12.4	1.8	-14.7		-14.0	1.3		11.9	-4.8	-14.9		-15.4
Women		MGSE	MGSZ	MGYL	MGYN	MGYP	YBWK	YBWN	LF2J	LF2R	LF2Z	LF33	LF35	LF37	LF39
	Nov-Jan 2018	696	4.4	441	105	149	21.5	68	693	4.5	438	105	150	21.7	68
	Nov-Jan 2019	611	3.8	390	85	135	22.1	58	602	3.9	383	84	135	22.4	58
	Feb-Apr 2019	586	3.7	377	75	133	22.7	61	578	3.7	374	75	129	22.3	57
	May-Jul 2019	583	3.6	385	74	125	21.4	61	579	3.7	382	74	123	21.3	60
	Aug-Oct 2019	566	3.5	368	83	115	20.3	56	557	3.6	364	83	111	19.9	53
	Nov-Jan 2020	595	3.7	380	89	126	21.2	69	586	3.7	376	89	122	20.8	65
	Change on quart	29	0.1	12	6	11	0.9	13	29	0.2	12	6	11	0.9	12
	Change %	5.2		3.3	7.3	9.7		23.4	5.2		3.2	7.3	10.1		22.9
	Change on year	-15	-0.2	-10	4	-9	-1.0	11	-15	-0.1	-7	5	-13	-1.6	7
	Change %	-2.5		-2.5	4.7	-6.8		19.0	-2.6		-2.0	5.7	-9.5		12.7

		16-17							18-24						
		All	Rate (%) ¹	Up to 6 months	Over 6 and up to 12 months	All over 12 months	% over 12 months	All over 24 months	All	Rate (%) ¹	Up to 6 months	Over 6 and up to 12 months	All over 12 months	% over 12 months	All over 24 months
		15	16	17	18	19	20	21	22	23	24	25	26	27	28
People		YBVH	YBVK	YBXD	YBXG	YBXJ	YBXM	YBXP	YBVN	YBVQ	YBXS	YBXV	YBXY	YBYB	YBYE
	Nov-Jan 2018	125	27.1	95	23	7	5.5	*	410	10.5	279	62	69	16.8	24
	Nov-Jan 2019	91	22.2	73	12	6	6.3	*	409	10.4	272	65	73	17.8	20
	Feb-Apr 2019	86	20.3	68	10	8	9.5	*	394	10.2	269	60	65	16.5	14
	May-Jul 2019	84	19.3	63	16	5	5.8	*	404	10.5	275	56	72	17.8	21
	Aug-Oct 2019	87	20.0	70	13	*	*	*	386	10.2	266	58	61	15.9	16
	Nov-Jan 2020	96	22.1	77	14	5	5.5	*	410	10.5	278	67	66	16.0	22
	Change on quart	9	2.1	7	1	*	*	*	24	0.4	12	9	4	0.1	5
	Change %	10.6		9.9	7.1	*		*	6.3		4.4	14.8	6.7		33.2
	Change on year	6	0.0	5	1	0	-0.8	*	1	0.2	6	2	-7	-1.8	2
	Change %	6.2		6.5	10.8	-7.2		*	0.2		2.1	3.7	-9.9		10.8
Men		YBVI	YBVL	YBXE	YBXH	YBXK	YBXN	YBXQ	YBVO	YBVR	YBXT	YBXW	YBXZ	YBYC	YBYF
	Nov-Jan 2018	62	27.6	46	14	*	*	*	231	11.4	144	41	46	19.8	19
	Nov-Jan 2019	48	23.6	37	6	5	9.6	*	250	12.0	158	40	52	20.7	16
	Feb-Apr 2019	45	22.1	36	*	5	10.8	*	248	12.3	163	41	44	17.7	11
	May-Jul 2019	46	22.0	34	8	*	*	*	246	12.3	155	41	50	20.4	15
	Aug-Oct 2019	52	25.1	43	7	*	*	*	225	11.3	144	37	44	19.6	11
	Nov-Jan 2020	56	27.5	45	7	*	*	*	242	11.9	158	42	42	17.2	13
	Change on quart	4	2.4	2	0	*	*	*	17	0.6	14	6	-3	-2.4	2
	Change %	6.8		5.7	-3.5	*		*	7.4		9.5	15.0	-5.7		16.9
	Change on year	8	3.8	8	0	*	*	*	-8	-0.2	0	2	-10	-3.6	-3
	Change %	17.5		23.2	7.4	*		*	-3.2		0.1	5.3	-19.7		-19.1
Women		YBVJ	YBVM	YBXF	YBXI	YBXL	YBXO	YBXR	YBVP	YBVS	YBXU	YBXX	YBYA	YBYD	YBYG
	Nov-Jan 2018	63	26.7	49	9	5	7.6	*	178	9.5	134	21	23	13.0	5
	Nov-Jan 2019	43	20.8	36	6	*	*	*	159	8.5	114	24	21	13.2	*
	Feb-Apr 2019	41	18.6	32	5	*	*	*	146	7.9	106	19	21	14.5	*
	May-Jul 2019	37	16.7	29	7	*	*	*	158	8.6	121	16	22	13.8	6
	Aug-Oct 2019	35	15.3	28	6	*	*	*	160	8.9	121	22	17	10.8	5
	Nov-Jan 2020	40	17.4	32	7	*	*	*	168	9.1	119	25	24	14.3	9
	Change on quart	6	2.1	5	1	*	*	*	8	0.2	-2	3	7	3.4	4
	Change %	16.3		16.3	20.9	*		*	4.9		-1.6	14.6	38.2		67.0
	Change on year	-3	-3.3	-4	1	*	*	*	9	0.6	6	0	3	1.1	*
	Change %	-6.4		-10.5	14.4	*		*	5.5		4.9	1.1	14.3		*

Relationship between columns: 1=3+4+5; 8=10+11+12; 15=17+18+19; 22=24+25+26.

¹Denominator = economically active for that age group.

Source: Labour Force Survey

Labour market statistics enquiries: labour.market@ons.gov.uk

UNEMPLOYMENT

9(2) Unemployment by age and duration

United Kingdom (thousands) seasonally adjusted

	25-49							50 and over						
	All	Rate(%) ¹	Up to 6 months	Over 6 and up to 12 months	All over 12 months	% over 12 months	All over 24 months	All	Rate(%) ¹	Up to 6 months	Over 6 and up to 12 months	All over 12 months	% over 12 months	All over 24 months
	1	2	3	4	5	6	7	8	9	10	11	12	13	14
People	MGVI	MGXB	YBYH	YBYK	YBYN	YBYQ	YBYT	YBVT	YBVW	YBYW	YBYZ	YBZC	YBZF	YBZI
Nov-Jan 2018	612	3.2	328	110	175	28.5	88	303	2.9	138	52	114	37.4	75
Nov-Jan 2019	546	2.9	306	85	154	28.3	84	293	2.7	136	43	114	38.8	66
Feb-Apr 2019	544	2.9	314	71	159	29.3	87	280	2.6	128	38	115	41.0	67
May-Jul 2019	534	2.8	313	69	152	28.5	86	272	2.5	135	40	98	36.0	62
Aug-Oct 2019	517	2.7	300	76	140	27.2	74	291	2.7	145	44	102	35.0	67
Nov-Jan 2020	534	2.8	320	81	133	25.0	75	302	2.8	150	50	102	33.7	69
Change on quarter	18	0.1	20	5	-7	-2.2	1	11	0.1	5	6	0	-1.3	2
Change %	3.5		6.7	6.3	-5.0		0.9	3.8		3.5	13.6	0.0		2.4
Change on year	-11	-0.1	14	-5	-21	-3.3	-9	10	0.0	14	7	-12	-5.1	3
Change %	-2.1		4.7	-5.4	-13.6		-10.6	3.3		10.5	16.2	-10.4		4.5
Men	MGVJ	MGXC	YBYI	YBYL	YBYO	YBYR	YBYU	YBVU	YBVX	YBYX	YBZA	YBZD	YBZG	YBZJ
Nov-Jan 2018	287	2.9	140	55	93	32.2	50	174	3.1	68	32	74	42.5	50
Nov-Jan 2019	265	2.6	130	48	86	32.5	57	165	2.9	71	25	69	41.7	38
Feb-Apr 2019	268	2.7	142	36	91	33.8	56	157	2.7	61	22	74	47.4	40
May-Jul 2019	267	2.7	145	33	89	33.4	53	151	2.6	68	24	59	39.0	41
Aug-Oct 2019	262	2.6	144	36	82	31.3	47	175	3.0	83	28	64	36.7	44
Nov-Jan 2020	276	2.7	162	40	73	26.6	41	174	3.0	80	33	61	35.3	42
Change on quarter	14	0.1	19	4	-9	-4.8	-6	-1	0.0	-3	5	-3	-1.3	-2
Change %	5.4		13.0	11.9	-10.6		-12.3	-0.7		-3.9	16.9	-4.3		-4.7
Change on year	11	0.1	32	-8	-13	-5.9	-16	9	0.1	8	8	-8	-6.4	4
Change %	4.1		24.5	-16.8	-14.9		-27.6	5.2		11.8	30.6	-10.9		10.2
Women	MGVK	MGXD	YBYJ	YBYM	YBYP	YBYS	YBYV	YBVV	YBVY	YBYV	YBZB	YBZE	YBZH	YBZK
Nov-Jan 2018	325	3.6	188	55	82	25.2	38	129	2.7	70	20	39	30.6	25
Nov-Jan 2019	281	3.2	176	37	68	24.3	27	127	2.5	65	18	45	35.1	28
Feb-Apr 2019	275	3.1	172	35	68	24.8	31	124	2.4	67	16	41	32.9	27
May-Jul 2019	267	3.0	168	35	63	23.6	33	121	2.4	66	16	39	32.4	21
Aug-Oct 2019	255	2.9	157	40	58	22.9	27	116	2.3	62	16	38	32.5	23
Nov-Jan 2020	259	2.9	158	40	60	23.3	34	128	2.5	71	17	40	31.5	27
Change on quarter	4	0.0	1	1	2	0.3	6	12	0.2	8	1	3	-1.0	4
Change %	1.4		0.9	1.3	2.9		23.6	10.7		13.4	7.8	7.5		16.0
Change on year	-22	-0.3	-18	4	-8	-1.1	7	1	-0.1	6	-1	-4	-3.6	-1
Change %	-7.9		-10.0	9.7	-12.0		25.1	0.7		9.1	-3.9	-9.5		-3.3

Relationship between columns: 1=3+4+5; 8=10+11+12.

¹Denominator = economically active for that age group.

Source: Labour Force Survey

Labour market statistics enquiries: labour.market@ons.gov.uk

ECONOMIC ACTIVITY AND INACTIVITY

10 Economic activity by age

United Kingdom (thousands) seasonally adjusted

All aged 16 & over	16 - 64	16 - 17	18 - 24	25 - 34	35 - 49	50 - 64	65+
1	2	3	4	5	6	7	8

Economically active

People	MGSF	LF2K	YBZL	YBZO	YBZR	YBZU	LF3A	LFK8
Nov-Jan 2018	33,692	32,461	463	3,890	7,744	11,185	9,181	1,231
Nov-Jan 2019	34,052	32,742	409	3,949	7,792	11,181	9,411	1,310
Feb-Apr 2019	34,050	32,730	425	3,864	7,815	11,165	9,461	1,321
May-Jul 2019	34,071	32,743	435	3,834	7,822	11,137	9,517	1,327
Aug-Oct 2019	34,082	32,749	435	3,796	7,848	11,152	9,517	1,333
Nov-Jan 2020	34,328	32,949	435	3,892	7,873	11,172	9,577	1,380
Change on quarter	246	200	-1	96	25	20	60	47
Change %	0.7	0.6	-0.1	2.5	0.3	0.2	0.6	3.5
Change on year	276	206	26	-57	81	-10	167	70
Change %	0.8	0.6	6.3	-1.5	1.0	-0.1	1.8	5.3

Men	MMSG	YBSL	YBZM	YBZP	YBZS	YBZV	YBZY	YCAE
Nov-Jan 2018	17,846	17,076	224	2,021	4,150	5,873	4,807	771
Nov-Jan 2019	18,045	17,248	202	2,077	4,183	5,881	4,904	797
Feb-Apr 2019	18,009	17,209	205	2,012	4,196	5,872	4,924	800
May-Jul 2019	17,971	17,198	210	1,991	4,191	5,866	4,940	773
Aug-Oct 2019	18,029	17,236	209	1,993	4,197	5,878	4,959	793
Nov-Jan 2020	18,075	17,290	204	2,040	4,206	5,859	4,981	784
Change on quarter	45	54	-5	48	9	-19	22	-8
Change %	0.3	0.3	-2.5	2.4	0.2	-0.3	0.4	-1.1
Change on year	29	42	2	-37	22	-22	77	-13
Change %	0.2	0.2	1.1	-1.8	0.5	-0.4	1.6	-1.6

Women	MGSH	LF2L	YBZN	YBZQ	YBZT	YBZW	LF3B	LFK9
Nov-Jan 2018	15,846	15,385	238	1,868	3,594	5,312	4,373	460
Nov-Jan 2019	16,007	15,494	207	1,872	3,609	5,300	4,506	513
Feb-Apr 2019	16,042	15,521	220	1,853	3,619	5,292	4,537	521
May-Jul 2019	16,100	15,545	224	1,843	3,630	5,271	4,576	555
Aug-Oct 2019	16,053	15,513	226	1,803	3,651	5,274	4,558	540
Nov-Jan 2020	16,254	15,658	231	1,852	3,667	5,313	4,596	595
Change on quarter	201	146	5	48	16	39	38	55
Change %	1.3	0.9	2.1	2.7	0.4	0.7	0.8	10.2
Change on year	247	164	24	-21	59	13	90	82
Change %	1.5	1.1	11.4	-1.1	1.6	0.2	2.0	16.1

Economic activity rates (%)¹

People	MGWG	LF22	YCAC	YCAJ	YCAM	YCAP	LF2C	LFL2
Nov-Jan 2018	63.7	78.8	32.8	69.1	87.0	87.4	73.7	10.5
Nov-Jan 2019	64.1	79.3	29.4	71.1	87.1	87.7	74.4	11.0
Feb-Apr 2019	64.0	79.2	30.5	69.8	87.3	87.6	74.6	11.1
May-Jul 2019	63.9	79.2	31.2	69.5	87.3	87.5	74.7	11.1
Aug-Oct 2019	63.9	79.2	31.1	69.1	87.6	87.6	74.5	11.1
Nov-Jan 2020	64.2	79.6	30.8	71.1	87.9	87.8	74.7	11.4
Change on quarter	0.4	0.4	-0.2	2.0	0.3	0.2	0.2	0.3
Change on year	0.2	0.3	1.5	0.0	0.8	0.1	0.3	0.4

Men	MGWH	MGSP	YCAH	YCAK	YCAN	YCAQ	MGWQ	MGWT
Nov-Jan 2018	69.0	83.4	31.1	70.3	93.2	92.9	78.6	14.3
Nov-Jan 2019	69.4	84.0	28.3	73.2	93.2	93.4	79.1	14.5
Feb-Apr 2019	69.1	83.7	28.8	71.1	93.3	93.4	79.1	14.5
May-Jul 2019	68.9	83.6	29.5	70.7	93.1	93.3	79.1	14.0
Aug-Oct 2019	69.0	83.8	29.2	71.0	93.2	93.5	79.2	14.3
Nov-Jan 2020	69.1	84.0	28.3	73.0	93.4	93.2	79.3	14.1
Change on quarter	0.1	0.2	-0.9	2.0	0.2	-0.3	0.1	-0.2
Change on year	-0.3	0.0	0.0	-0.2	0.1	-0.2	0.2	-0.5

Women	MGWI	LF23	YCAI	YCAL	YCAO	YCAR	LF2D	LFL3
Nov-Jan 2018	58.6	74.2	34.6	67.8	80.7	81.9	68.9	7.3
Nov-Jan 2019	59.0	74.7	30.5	68.9	81.0	82.1	70.0	8.0
Feb-Apr 2019	59.0	74.8	32.4	68.4	81.2	82.1	70.2	8.1
May-Jul 2019	59.2	74.8	33.0	68.3	81.4	81.8	70.5	8.6
Aug-Oct 2019	58.9	74.7	33.1	67.1	81.9	81.9	70.0	8.4
Nov-Jan 2020	59.6	75.3	33.5	69.1	82.4	82.5	70.4	9.2
Change on quarter	0.7	0.7	0.5	2.0	0.4	0.6	0.4	0.8
Change on year	0.6	0.7	3.1	0.3	1.4	0.4	0.4	1.2

Relationship between columns: 1 = 2+8; 2=3+4+5+6+7.

¹Denominator = all persons in the relevant age group.

Data source: Labour Force Survey

Labour market statistics enquiries: labour.market@ons.gov.uk

ECONOMIC ACTIVITY AND INACTIVITY

11 Economic inactivity: reasons

United Kingdom (thousands) seasonally adjusted

	Total aged 16-64	Economic inactivity by reason (aged 16 to 64)							Wanting/not wanting a job (aged 16 to 64)		
		Student	Looking after family / home	Temp sick	Long-term sick	Discouraged workers	Retired	Other	Does not want job	Wants a job ¹	
	1	2	3	4	5	6	7	8	9	10	
	LF2M	LF63	LF65	LF67	LF69	LFL8	LF6B	LF6D	LFL9	LFM2	
People											
	Nov-Jan 2018	8,742	2,354	2,084	205	1,987	36	1,156	921	6,720	2,023
	Nov-Jan 2019	8,549	2,257	2,005	173	2,006	33	1,089	985	6,733	1,816
	Feb-Apr 2019	8,581	2,260	2,047	175	1,971	32	1,112	985	6,757	1,823
	May-Jul 2019	8,587	2,241	1,999	164	2,048	40	1,101	995	6,712	1,875
	Aug-Oct 2019	8,606	2,280	1,966	174	2,072	32	1,117	965	6,767	1,839
	Nov-Jan 2020	8,431	2,186	1,868	178	2,120	31	1,111	937	6,560	1,871
	Change on quarter	-175	-95	-98	3	48	0	-6	-27	-207	32
	Change %	-2.0	-4.2	-5.0	1.9	2.3	-1.4	-0.5	-2.8	-3.1	1.7
	Change on year	-118	-72	-137	4	114	-2	21	-47	-173	55
	Change %	-1.4	-3.2	-6.8	2.6	5.7	-5.1	2.0	-4.8	-2.6	3.0
Men		YBSO	BEEH	BEAQ	BEDI	BEDL	YCFP	BEDR	BEDU	YBWA	YBWD
	Nov-Jan 2018	3,406	1,180	252	102	961	22	469	421	2,558	848
	Nov-Jan 2019	3,290	1,141	215	87	951	21	477	398	2,547	743
	Feb-Apr 2019	3,341	1,156	234	93	930	23	497	409	2,607	734
	May-Jul 2019	3,364	1,135	226	72	964	24	506	437	2,591	772
	Aug-Oct 2019	3,340	1,142	235	75	961	18	506	403	2,590	750
	Nov-Jan 2020	3,300	1,103	225	78	981	20	501	394	2,520	780
	Change on quarter	-39	-39	-11	3	20	2	-5	-10	-70	30
	Change %	-1.2	-3.4	-4.5	3.8	2.0	10.5	-1.0	-2.4	-2.7	4.0
	Change on year	11	-38	10	-10	29	-1	24	-4	-27	37
	Change %	0.3	-3.3	4.7	-11.0	3.1	-3.7	5.1	-1.1	-1.0	5.0
Women		LF2N	LF64	LF66	LF68	LF6A	LFM3	LF6C	LF6E	LFM4	LFM5
	Nov-Jan 2018	5,337	1,175	1,832	103	1,026	14	687	500	4,162	1,174
	Nov-Jan 2019	5,259	1,116	1,790	86	1,054	12	613	587	4,186	1,073
	Feb-Apr 2019	5,240	1,104	1,813	82	1,040	9	615	576	4,151	1,089
	May-Jul 2019	5,223	1,106	1,773	91	1,084	16	595	558	4,120	1,103
	Aug-Oct 2019	5,266	1,139	1,731	100	1,111	14	611	561	4,177	1,089
	Nov-Jan 2020	5,130	1,083	1,643	100	1,139	12	610	544	4,040	1,091
	Change on quarter	-136	-56	-88	1	28	-2	-1	-18	-137	1
	Change %	-2.6	-4.9	-5.1	0.5	2.5	-16.8	-0.1	-3.2	-3.3	0.1
	Change on year	-129	-33	-147	14	84	-1	-3	-43	-146	18
	Change %	-2.4	-3.0	-8.2	16.4	8.0	-7.4	-0.5	-7.3	-3.5	1.7
Percentage of economically inactive aged from 16 to 64 (%)											
People		LF6V	LF6X	LF6Z	LF73	LF75	LF77	LF79	LF7B	LF7D	LF7F
	Nov-Jan 2018	100	26.9	23.8	2.3	22.7	0.4	13.2	10.5	76.9	23.1
	Nov-Jan 2019	100	26.4	23.5	2.0	23.5	0.4	12.7	11.5	78.8	21.2
	Feb-Apr 2019	100	26.3	23.9	2.0	23.0	0.4	13.0	11.5	78.8	21.2
	May-Jul 2019	100	26.1	23.3	1.9	23.8	0.5	12.8	11.6	78.2	21.8
	Aug-Oct 2019	100	26.5	22.8	2.0	24.1	0.4	13.0	11.2	78.6	21.4
	Nov-Jan 2020	100	25.9	22.2	2.1	25.1	0.4	13.2	11.1	77.8	22.2
Men		BEBP	BEEH	BEEK	BEEN	BEEQ	BEET	BEEW	BEEZ	BEAS	BEGT
	Nov-Jan 2018	100	34.6	7.4	3.0	28.2	0.6	13.8	12.4	75.1	24.9
	Nov-Jan 2019	100	34.7	6.5	2.7	28.9	0.6	14.5	12.1	77.4	22.6
	Feb-Apr 2019	100	34.6	7.0	2.8	27.9	0.7	14.9	12.2	78.0	22.0
	May-Jul 2019	100	33.7	6.7	2.1	28.7	0.7	15.0	13.0	77.0	23.0
	Aug-Oct 2019	100	34.2	7.0	2.2	28.8	0.5	15.1	12.1	77.5	22.5
	Nov-Jan 2020	100	33.4	6.8	2.4	29.7	0.6	15.2	11.9	76.4	23.6
Women		LF6W	LF6Y	LF72	LF74	LF76	LF78	LF7A	LF7C	LF7E	LF7G
	Nov-Jan 2018	100	22.0	34.3	1.9	19.2	0.3	12.9	9.4	78.0	22.0
	Nov-Jan 2019	100	21.2	34.0	1.6	20.1	0.2	11.7	11.2	79.6	20.4
	Feb-Apr 2019	100	21.1	34.6	1.6	19.9	0.2	11.7	11.0	79.2	20.8
	May-Jul 2019	100	21.2	33.9	1.7	20.7	0.3	11.4	10.7	78.9	21.1
	Aug-Oct 2019	100	21.6	32.9	1.9	21.1	0.3	11.6	10.7	79.3	20.7
	Nov-Jan 2020	100	21.1	32.0	2.0	22.2	0.2	11.9	10.6	78.7	21.3

Relationship between columns : 1=2+3+4+5+6+7+8; 1=9+10.

Data Source: Labour Force Survey.
Labour market statistics enquiries: labour.market@ons.gov.uk

1. This series comprises those who say they would like a regular paid job, but who do not meet the internationally agreed definition of unemployment because they have not been looking for work in the last four weeks and/or they were unable to start working within two weeks.

ECONOMIC ACTIVITY AND INACTIVITY

12 Educational status, economic activity and inactivity of people aged from 16 to 24

November - January 2020

United Kingdom (thousands) seasonally adjusted

All aged 16 to 24				In full-time education (FTE)				Not in full-time education (FTE) ¹			
Total	Employed	Unemployed	Economically inactive	Total	Employed ²	Unemployed ²	Economically inactive	Total	Employed	Unemployed	Economically inactive
1	2	3	4	5	6	7	8	9	10	11	12

Levels

People	16-17	1,410	339	96	975	1,221	263	60	898	189	75	36	78
	18-24	5,475	3,482	410	1,583	1,752	621	86	1,045	3,723	2,861	324	538
	16-24	6,885	3,820	506	2,559	2,973	884	146	1,943	3,912	2,936	360	616
Men	16-17	722	148	56	518	611	104	32	475	111	44	24	43
	18-24	2,796	1,798	242	755	829	269	42	518	1,967	1,529	200	238
	16-24	3,518	1,946	298	1,274	1,440	373	74	993	2,078	1,573	224	281
Women	16-17	688	190	40	457	609	159	28	423	78	31	12	35
	18-24	2,679	1,683	168	828	923	352	44	527	1,756	1,332	124	300
	16-24	3,367	1,874	208	1,285	1,533	511	72	950	1,834	1,363	136	335

Changes on quarter

People													
	16-17	9	-10	9	10	27	8	5	14	-18	-18	4	-4
	18-24	-20	71	24	-116	-65	28	15	-108	45	43	10	-8
	16-24	-11	61	34	-106	-38	36	20	-94	27	25	14	-12
Men													
	16-17	5	-9	4	10	6	-4	3	7	-2	-5	1	3
	18-24	-10	31	17	-58	-37	12	12	-61	26	19	5	3
	16-24	-6	22	20	-48	-30	8	15	-54	25	14	5	6
Women													
	16-17	5	-1	6	0	21	12	2	7	-16	-13	4	-7
	18-24	-10	40	8	-58	-28	16	3	-47	18	24	5	-11
	16-24	-5	39	13	-58	-7	28	5	-40	2	11	9	-18

Rates(%)³

People											
16-17	24.0	22.1	69.2	21.5	18.6	73.5	39.9	32.4	41.0		
18-24	63.6	10.5	28.9	35.4	12.2	59.6	76.8	10.2	14.5		
16-24	55.5	11.7	37.2	29.7	14.2	65.3	75.1	10.9	15.7		
Men											
16-17	20.5	27.5	71.7	17.0	23.7	77.7	39.8	35.0	38.8		
18-24	64.3	11.9	27.0	32.5	13.5	62.5	77.7	11.6	12.1		
16-24	55.3	13.3	36.2	25.9	16.6	68.9	75.7	12.5	13.5		
Women											
16-17	27.7	17.4	66.5	26.1	14.9	69.3	40.0	28.2	44.3		
18-24	62.8	9.1	30.9	38.1	11.2	57.1	75.8	8.5	17.1		
16-24	55.7	10.0	38.2	33.3	12.4	62.0	74.3	9.1	18.3		

Changes on quarter

People											
16-17	-0.9	2.1	0.2	0.2	0.8	-0.5	-5.2	7.0	1.4		
18-24	1.5	0.4	-2.0	2.8	1.5	-3.8	0.2	0.1	-0.4		
16-24	1.0	0.5	-1.5	1.6	1.2	-2.3	0.1	0.3	-0.4		
Men											
16-17	-1.4	2.4	0.9	-0.8	2.2	0.4	-3.8	3.1	2.8		
18-24	1.3	0.6	-2.0	2.8	3.1	-4.4	-0.1	0.1	0.0		
16-24	0.7	0.7	-1.3	1.1	2.6	-2.2	-0.2	0.2	0.1		
Women											
16-17	-0.3	2.1	-0.5	1.1	0.0	-1.3	-6.8	11.8	0.3		
18-24	1.7	0.2	-2.0	2.8	0.2	-3.2	0.6	0.2	-0.8		
16-24	1.3	0.4	-1.7	2.0	0.1	-2.3	0.5	0.5	-1.0		

Relationship between columns: 1=5+9; 2=6+10; 3=7+11.

Source: Labour Force Survey

Labour market statistics enquiries: labour.market@ons.gov.uk

1. Not in full-time education includes people in part-time education and/or some form of training. Estimates of the number of young people who were not in employment, education or training ("NEET") cannot therefore be derived from this table. Estimates of young people who were NEET are published separately at:

<https://www.ons.gov.uk/employmentandlabourmarket/peoplenotinwork/unemployment/bulletins/youngpeoplenotineducationemploymentortrainingneet/latest>

2. People in full-time education are employed if they have a part-time job or unemployed if they are looking for part-time employment.

3. Denominator = all persons in the relevant age group for economically active, total in employment and economically inactive; economically active for unemployment.

17 International comparisons of employment and unemployment

Employment rates as published by EUROSTAT: (not seasonally adjusted)					Unemployment rates as published by EUROSTAT on 03 March 2020 (seasonally adjusted)					
		Latest period	Employment rate (%) ^{1 2}	Change on year %			Latest Period	Unemployment rate (%) ³	Change on month %	Change on year %
United Kingdom (*)	ANZ6	Jul-Sep 19	75.1	0.4	United Kingdom (*)	ZXDW	Nov 19	3.7	-0.1	-0.2
European Union (EU)					European Union (EU)					
Austria	YXSN	Jul-Sep 19	74.2	0.4	Austria	ZXDS	Jan 20	4.3	0.1	-0.4
Belgium	YXSO	Jul-Sep 19	65.8	0.8	Belgium	ZXDI	Jan 20	5.3	0.0	-0.3
Bulgaria	A495	Oct-Dec 19	70.0	2.3	Bulgaria	A492	Jan 20	4.1	-0.1	-0.7
Croatia	GUMI	Jul-Sep 19	63.0	1.1	Croatia	GUMJ	Jan 20	6.1	-0.1	-1.1
Cyprus	A4AC	Oct-Dec 19	71.0	1.8	Cyprus	A4AN	Jan 20	6.0	-0.3	-1.6
Czech Republic	A4AD	Jul-Sep 19	75.2	0.2	Czech Republic	A4AO	Jan 20	2.0	0.0	-0.1
Denmark	YXSP	Jul-Sep 19	75.5	0.8	Denmark	ZXDJ	Jan 20	4.9	0.0	-0.4
Estonia	A4AE	Oct-Dec 19	76.1	0.3	Estonia	A4AP	Dec 19	4.5	0.2	0.2
Finland	YXSQ	Jul-Sep 19	74.0	0.9	Finland	ZXDU	Jan 20	6.6	0.0	-0.1
France	YXSR	Oct-Dec 19	65.9	0.5	France	ZXDN	Jan 20	8.2	0.0	-0.5
Germany	YXSS	Jul-Sep 19	77.0	0.7	Germany	ZXDK	Jan 20	3.2	0.0	0.0
Greece	YXST	Jul-Sep 19	57.4	1.5	Greece	ZXDL	Dec 19	16.3	-0.2	-2.2
Hungary	A4AF	Jul-Sep 19	70.3	0.8	Hungary	A4AQ	Dec 19	3.4	0.0	-0.2
Ireland	YXSU	Oct-Dec 19	70.2	1.1	Ireland	ZXDO	Jan 20	4.8	0.1	-0.3
Italy	YXSV	Jul-Sep 19	59.4	0.5	Italy	ZXDP	Jan 20	9.8	0.0	-0.6
Latvia	A4AG	Jul-Sep 19	73.1	0.3	Latvia	A4AR	Jan 20	6.4	0.1	-0.3
Lithuania	A4AH	Jul-Sep 19	73.2	-0.8	Lithuania	A4AS	Jan 20	6.6	0.2	0.5
Luxembourg	YXSW	Oct-Dec 19	67.8	-0.3	Luxembourg	ZXDQ	Jan 20	5.7	0.1	0.5
Malta	A4AI	Jul-Sep 19	73.7	0.4	Malta	A4AT	Jan 20	3.4	0.1	-0.2
Netherlands	YXSX	Jul-Sep 19	78.4	0.7	Netherlands	ZXDR	Jan 20	3.0	-0.2	-0.6
Poland	A4AJ	Jul-Sep 19	68.9	0.9	Poland	A4AU	Jan 20	2.9	0.0	-0.9
Portugal	YXSY	Oct-Dec 19	70.6	0.7	Portugal	ZXDT	Jan 20	6.9	0.2	0.3
Romania	A494	Jul-Sep 19	66.7	0.5	Romania	A48Z	Jan 20	3.9	-0.1	0.0
Slovak Republic	A4AK	Jul-Sep 19	68.5	0.6	Slovak Republic	A4AV	Jan 20	5.7	0.0	-0.2
Slovenia	A4AL	Jul-Sep 19	72.1	0.2	Slovenia	A4AW	Jan 20	4.7	0.1	0.2
Spain	YXSZ	Oct-Dec 19	63.7	0.7	Spain	ZXDM	Jan 20	13.7	0.0	-0.6
Sweden	YXTA	Oct-Dec 19	76.7	-0.3	Sweden ⁵	ZXDV	Jan 20	7.1	0.5	1.0
Total EU ⁴	A496	Jul-Sep 19	68.8	0.6	Total EU ⁴	A493	Jan 20	6.6	0.0	-0.3
Eurozone ⁴	YXTC	Jul-Sep 19	68.2	0.4	Eurozone ⁴	ZXDH	Jan 20	7.4	0.0	-0.4
Employment rates published by the OECD (seasonally adjusted)					Unemployment rates as published by national statistical offices (seasonally adjusted)					
Canada	A48O	Oct-Dec 19	74.4	0.3	Canada	ZXDZ	Feb 20	5.6	0.1	-0.2
Japan	A48P	Oct-Dec 19	78.0	0.8	Japan	ZXDY	Jan 20	2.4	0.2	-0.1
United States	A48Q	Oct-Dec 19	71.7	0.7	United States	ZXDX	Feb 20	3.5	-0.1	0.0

Sources: EUROSTAT, OECD, national statistical offices.
Labour market statistics enquiries: labour.market@ons.gov.uk

(*) Note: The UK rates shown in this table are as published by EUROSTAT (the EUs statistical office). See Table 1 for the latest rates for the UK as published by ONS.

- All employment rates shown in this table are for those aged from 15 to 64 except for the rate for the United States published by OECD which are for those aged from 16 to 64.
- The employment rates for the EU are published by EUROSTAT and are not seasonally adjusted. EUROSTAT do not publish seasonally adjusted (SA) employment rates but SA rates for some EU countries are published by OECD. These OECD employment rates are available on our website at [dataset A10](#).
- Unemployment rates published by EUROSTAT for most EU countries (but not for the UK), are calculated by extrapolating from the most recent LFS data using monthly registered unemployment data. A standard population basis (15-74) is used by EUROSTAT except for Spain, Italy and the UK (16-74). The unemployment rate for the US is based on those aged 16 and over, but the rates for Canada and Japan are for those aged 15 and over. All unemployment rates shown in this table are seasonally adjusted.
- The "Total EU" series consist of all 27 EU countries. The Eurozone figures consist of the following EU countries: Austria, Belgium, Cyprus, Estonia, Finland, France, Germany, Greece, Ireland, Italy, Latvia, Lithuania, Luxembourg, Malta, Netherlands, Portugal, Slovak Republic, Slovenia and Spain.
- The EU unemployment rates are as published on the EUROSTAT database. For Sweden the rates on the database differ from those shown in the EUROSTAT News Release published on 30 January 21. This is because the figures for Sweden on the database are seasonally adjusted estimates but the figures for Sweden shown in the News Release are the trend component.

18 Labour disputes

United Kingdom, not seasonally adjusted

	Working days lost ^{1,2} (thousands)	Working days lost in the Public Sector (thousands) ^{1,2}	Working days lost in the Private Sector (thousands) ^{1,2}	Number of stoppages ³	Number of stoppages in the Public Sector	Number of stoppages in the Private Sector	Workers involved (thousands) ^{1,3}
	1	2	3	4	5	6	7
	BBFW	F8XZ	F8Y2	BLUU	F8Y3	F8Y4	BLUT
2017 December	10	4	6	16	3	13	5
2018 December	5	1	5	7	2	5	1
2019 January	11	1	11	10	2	8	6
February	7	2	5	11	5	6	6
March	9	1	8	14	6	8	5
April	2	1	2	8	1	7	1
May	10	1	10	14	2	12	5
June	12	1	12	24	5	19	3
July	11	4	7	24	9	15	7
August	7	1	6	10	2	8	2
September	9	1	8	14	3	11	3
October (r)	8	1	7	13	5	8	2
November (r)	84	14	69	13	4	9	21
December (r)	54	7	47	11	6	5	18
Cumulative totals 12 months to:							
Dec 18	273	26	246	81	25	56	39
Dec 19 (p)	225	34	192	100	30	70	42

Relationship between columns 1=2+3; 4=5+6

Data source: ONS Labour Disputes Survey
Labour disputes enquiries 01633 455400

- Estimates of working days lost and workers involved are shown to the nearest thousand. Unrounded estimates of less than 500 therefore round to zero.
- Due to rounding the working days lost for the public and private sectors may not add up to the total working days lost.
- The latest 12 month cumulative totals for the figures in these columns will not necessarily equal the sum of the 12 months as some disputes continue for over one month. These disputes appear in each month's data, but only once in the total.

REDUNDANCIES

22 Redundancies: level and rates ¹

United Kingdom (seasonally adjusted)

	People (aged 16 and over)		Men (aged 16 and over)		Women (aged 16 and over)	
	Level (000s)	Rate ¹	Level (000s)	Rate ¹	Level (000s)	Rate ¹
	BEAO	BEIR	BEIU	BEIX	BEJA	BEJD
Nov-Jan 2018	102	3.8	61	4.5	41	3.1
Nov-Jan 2019	91	3.3	53	3.8	38	2.8
Feb-Apr 2019	108	3.9	64	4.6	44	3.2
May-Jul 2019	98	3.5	51	3.7	47	3.4
Aug-Oct 2019	118	4.3	62	4.5	56	4.1
Nov-Jan 2020	106	3.8	61	4.4	45	3.3
change on quarter	-12	-0.4	-2	-0.1	-11	-0.8
change %	-10.5		-2.6		-19.3	
change on year	15	0.5	8	0.5	7	0.5
change %	16.4		14.1		19.5	

Data source: Labour Force Survey

Labour market statistics enquiries: labour.market@ons.gov.uk

1. The redundancy rate is the ratio of the redundancy level for the given quarter to the seasonally adjusted number of employees in the previous quarter, multiplied by 1,000.