



Department
for Education

Apprenticeship qualification achievement rates technical specification 2022 to 2023

Version 1.0 July 2023

Contents

Introduction and purpose of document	3
Understanding the terminology	3
Changes from the 2021 to 2022 technical specification document	3
Apprenticeship QAR methodology	4
Identifying apprenticeship aims	5
Exclusions from apprenticeship QARs	5
Processing standard files	9
Process flow diagram	9
Matching programme aims across years	10
Processing learner reference number changes	10
Identifying overdue continuing aims and planned breaks	11
QAR calculations	13
Further Information	14
Contents of the QAR dataset	15
Calculating the hybrid end year	29
Step 1	29
Step 2	31
Further examples	32

Introduction and purpose of document

This publication provides non-statutory guidance from the Department for Education. It has been produced to help [user] to [purpose of guidance].

This document provides technical information that explains how we process information provided in the Individualised Learner Record (ILR) data collection to produce the qualification achievement rates (QAR) dataset.

This dataset produces the apprenticeship 2022 to 2023 QAR products. This document also provides information about how we generate the information in the QAR dashboard.

Please read this document alongside the [ILR standard file specifications and reference data documents](#) and the relevant QAR business rules, technical specifications, National Achievement Rate tables and guidance on links available from the [QAR collections page](#).

Understanding the terminology

The term 'we' refers to the 'Department for Education' (DfE) or Education and Skills Funding Agency' (ESFA), an executive agency sponsored by the Department for Education (DfE) and associated staff.

When we refer to 'you' or 'providers', this includes colleges, training organisations, local authorities and employers that report all standards and frameworks recorded in the ILR through Funding models 35 ('Adult Skills'), 36 ('Apprenticeships') and 81 ('Other Adult').

Unless otherwise stated, we refer to apprenticeship frameworks and standards in this document as an 'apprenticeship'.

Changes from the 2021 to 2022 technical specification document

Data submitted using the Individualised Learner Record (ILR) for the last 5 years is used to create a QAR dataset for reporting. Historically, we have utilised the Learner Reference Number to match learning aims across ILR files. From 2022 to 2023 we will match on the Unique Learner Number (ULN) and where we are unable to do so we will match on Learner Reference Number (LRN). The section [Matching programme aims across years](#) provides further detail.

Apprenticeship QAR methodology

We base the overall QAR on the hybrid end year, which is the later of:

- the achievement year of an apprenticeship
- the actual end year of an apprenticeship
- the planned end year of an apprenticeship
- the reporting year

We only use the achievement year for apprenticeship standards on funding model 36. In addition, we include the reporting year to capture those overdue continuing learning aims, overdue planned breaks or late completions recorded in the following funding year (up to R04). See later section [calculating the hybrid end year](#) for further details on how we calculate the hybrid end year.

For standards with an actual end year of 2019 (the academic year AchDate was introduced for standards), we do not use achievement year to calculate the Hybrid End Year, this is to account for the crossover between academic years.

The apprenticeships included in the 2022 to 2023 overall QAR are those with a hybrid end year of 2022 to 2023.

There can be a delay between completing an apprenticeship and the notification of the achievement. To account for this delay and to ensure all relevant leavers are included, we use information from the 2023 to 2024 R04 ILR to identify apprenticeships with a planned end date in 2022 to 2023. If you update records in your 2023 to 2024 R04 return that you submitted in your 2022 to 2023 R14 return, then we will use the R04 record to determine your QAR.

The business rules available from the [QAR collections page](#) describe how we calculate the QAR and which apprenticeships will not be included in the QAR calculations.

We exclude some apprenticeships from QARs to ensure the results are more credible and appropriate. The reasons include (and this is not an exhaustive list):

- if circumstances affect QARs where we have agreed an exception (for example, if the learner transferred to new provision due to intervention from us)
- if we do not fund the apprenticeship
- if the apprentice has transferred to another apprenticeship within 120 days of finishing the old apprenticeship

Identifying apprenticeship aims

We identify apprenticeship programme aims in the ILR dataset by using **Aim Type** is 1 (Programme aim) and **Programme Type** is 2, 3, 10, 20, 21, 22, 23 or 25, as set out in the ILR standard file specification document.

We use the component aims of an apprenticeship framework programme to determine whether you have subcontracted the competency aim. We add this information to the programme aim, although we exclude the component aims of the programme from the achievement rates dataset. As in previous years, we will not report the subcontractor for apprenticeship standard programmes.

We identify the component aims of an apprenticeship in the ILR dataset by using **Aim Type** is 3 (component aim) and **Programme Type** is 2, 3, 10, 20, 21, 22, 23 or 25, as set out in the ILR standard file specification document.

Exclusions from apprenticeship QARs

The table below describes the scenarios where we exclude apprenticeships. The definition of the derived variables below are in [ILR standard file specifications and reference data documents](#).

Description	Rules for identifying the excluded apprenticeship
An apprentice has transferred to a new provider because of intervention from us.	Programme aims where Withdrawal Reason is 7 (Learner has transferred to a new provider forced by ESFA intervention or to support a specific government strategy) and Withdrawal Reason is not 41 (Transfer to another provider to undertake learning that meets a specific government strategy).
An apprentice has transferred to a new provider due to college merger.	Programme aims where Withdrawal Reason is 47 (Learner has transferred to another provider due to college merger), and the Learning Actual End Date is less than the Learning Start Date on the new UKPRN (matching on Unique Learning Number). The Learning Start Date on the new UKPRN must be within 30 days or less than the Learning Actual End Date on the original UKPRN.

Description	Rules for identifying the excluded apprenticeship
<p>For the overall QAR, where an apprentice has transferred to a different apprenticeship with the same provider.</p>	<p>Programme aims where Completion Status is 3 (The learner has withdrawn from the learning activities leading to the learning aim), the Withdrawal Reason is 40 (Learner has transferred to a new learning aim with the same provider) and the Learning Actual End Date is before 1 August of the relevant year.</p> <p>Where an apprentice has transferred to a different apprenticeship, as above, the Learning Start Date for the new apprenticeship programme (matching on Unique Learner Number and UKPRN) must be 120 days or less than the Learning Actual End Date of the original programme.</p> <p>We will not exclude transfers from apprenticeships to other learning aims.</p>
<p>For the overall QAR, where an apprentice has temporarily withdrawn from the apprenticeship due to an agreed break in learning.</p>	<p>Programme aims where Completion Status is 6 (Learner has temporarily withdrawn from the aim due to an agreed break in learning).</p> <p>Under certain circumstances, we do not exclude programme aims where the learner has temporarily withdrawn from the aim due to an agreed break in learning. For further detail, see later section identifying overdue continuing aims and planned breaks.</p>

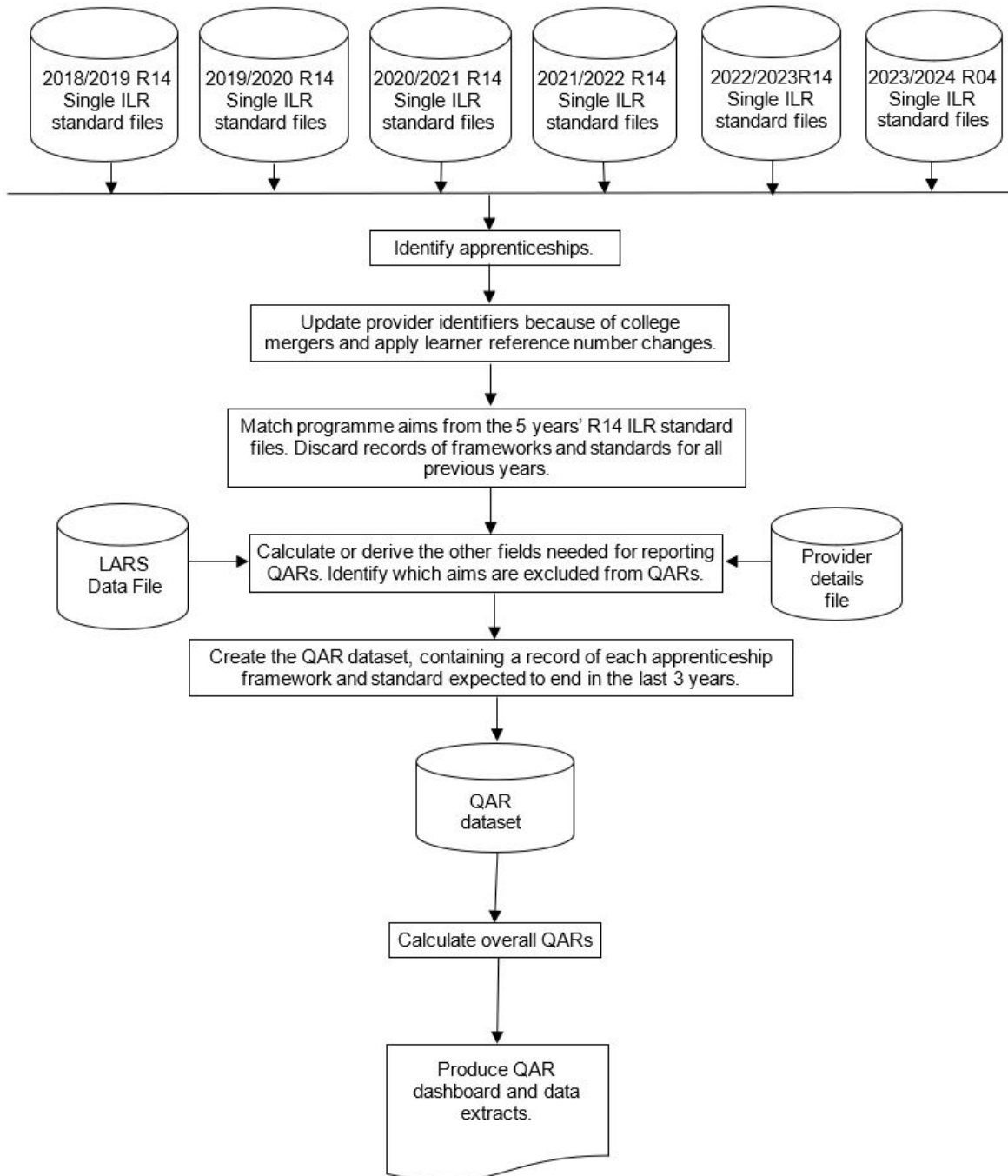
Description	Rules for identifying the excluded apprenticeship
<p>Apprenticeships where the learner has withdrawn from the apprenticeship within the funding qualifying period, and has not achieved the learning aim.</p> <p>We exclude apprentices who restarted with the same provider in this exclusion rule, as the original instance of learning will have passed the funding qualifying period.</p> <p>This does not apply to trailblazer pilot standards</p>	<p>Programme aims where:</p> <ul style="list-style-type: none"> • the planned duration is 168 days or more • the actual duration is less than 42 days; and • the Completion Status is 3 (Withdrawal); and • the Restart Indicator is 0 (Not a Restart) <p>Programme aims where:</p> <ul style="list-style-type: none"> • the planned duration is between 14 and 167 days • the actual duration is less than 14 days; and • the Completion Status is 3 (Withdrawal); and • the Restart Indicator is 0 (Not a Restart) <p>Programme aims where:</p> <ul style="list-style-type: none"> • the planned duration is 168 days or more • the actual duration is less than 42 days; and • the Completion Status is 3 (Withdrawal); and • the Restart Indicator is 1 (Restart); and <ul style="list-style-type: none"> ○ the new Learning Start Date is greater than the original Learning Actual End Date of the apprenticeship on the original UKPRN <p>Programme aims where:</p> <ul style="list-style-type: none"> • the planned duration is between 14 and 167 days • the actual duration is less than 14 days; and • the Completion Status is 3 (Withdrawal); and • the Restart Indicator is 1 (Restart); and <ul style="list-style-type: none"> ○ the new Learning Start Date is greater than the original Learning Actual End Date of the apprenticeship on the original UKPRN <p>The planned duration of the aim, in days, is the difference between the Learning Start Date and the Learning Planned End Date.</p> <p>The actual duration of the aim, in days, is the difference between the Learning Start Date and the Learning Actual End Date.</p>
<p>Apprenticeships with a planned end date after the last day of the QAR reporting period (31 July 2023).</p>	<p>Programme aims where the Learning Planned End Date is later than 31 July 2023.</p>
<p>Apprenticeships with a learning start date before the effective from date of the aim in LARS.</p> <p>This only applies to apprenticeship standards.</p>	<p>Programme aims where the Learning Start Date is earlier than the Effective From Date of the apprenticeship standard as recorded in LARS.</p>
<p>Apprenticeships that we do not fund.</p>	<p>Programme aims where the Funding Model is equal to 99 (No ESFA funding) in all years.</p> <p>We will exclude all trailblazer pilot standards without a net employer contribution payment recorded (i.e. any payments minus</p>

Description	Rules for identifying the excluded apprenticeship
	reimbursements). We calculate this for programme aims where the Funding model is 81 (Other Adult) and the sum of all payment records minus all reimbursement repayment records is equal to zero.
<p>Changes to records previously submitted 2 or more years ago.</p> <p>The example given is for aims reported in 2021 to 2022. The exclusion also applies to aims reported in 2020 to 2021 or 2019 to 2020 that meet the same conditions for the corresponding earlier years.</p>	<p>For aims reported in the 2021 to 2022 ILR, that were previously reported in the 2019 to 2020 ILR or earlier, and not reported in the 2020 to 2021 ILR. Where:</p> <ul style="list-style-type: none"> • the actual or planned end dates are not in 2021 to 2022 or later, • the record was first reported complete in the 2021 to 2022 ILR <p>The record is not an update to a learning aim, which would otherwise have been an overdue planned break, counted in the 2021 to 2022 hybrid end year.</p> <p>This applies only to 2021 to 2022 and previous years.</p>
Former Employer Ownership Pilot learning aims.	Programme aims where any Learning Delivery Monitoring Code is 351 (Former Employer Ownership Pilot Provision)
SILR exclusion	Aims in the QAR business rules that do not meet the definition of an apprenticeship programme aim.

Processing standard files

Process flow diagram

This flow diagram below shows how we process ILR information for multiple funding years to produce the QAR dataset, which is the source of the information used for the QAR dashboard.



Matching programme aims across years

Many apprenticeship programmes take more than one year to complete, meaning that the same programme aim for an apprentice can appear in more than one ILR file.

We use various combinations of variables to ensure we match the correct records across years. Historically at learner level, we have utilised the Learner Reference Number for matching purposes. From 2022 to 2023 we will match on the Unique Learner Number (ULN) and where we are unable to do so we will match on Learner Reference Number (LRN). The matching records process will therefore utilise the UKPRN, Unique Learner Number (or where unable to do so the Learner Reference Number), Programme type and Framework code or Standard code together with the following combinations, in the following sequence:

- Learning start date, Learning planned end date and Learning actual end date
- Learning start date and Learning planned end date
- Learning start date and Learning actual end date
- Learning start date

We do not include apprenticeship pathway code in this combination.

Once we have matched programme aim records, we discard those from previous years, leaving just the latest information for each programme aim in the QAR dataset.

Unique Learner Number is used to match all aims except in cases where:

- There is more than one distinct Learner reference number recorded with the same Unique learner number by the same provider (same UKPRN) within a year.
- There is more than one distinct LearnRefNumber_orig recorded with the same Unique learner number by the same provider (same UKPRN) and with the same LearnAimRef, within a year.
- An aim has been submitted with the same Learner reference number and UKPRN with a ULN of 9999999999.

Processing learner reference number changes

As outlined in the section above, historically at learner level, we have utilised the Learner Reference Number assigned by providers for matching purposes. From 2022 to 2023 we will match on the Unique Learner Number (ULN) and where we are unable to do so we will match on Learner Reference Number (LRN) to match aims across years.

If, for any reason, a learner's Learner reference number changes, either within a funding year or between years, then you must record this using the Learner reference number in previous year field.

We use the information in the Learner reference number in the previous year field to change the Learner reference number for previous years to the latest Learner reference number. We keep the original Learner reference number in the QAR dataset in the LearnRefNumber_Orig field.

If you do not return the Learner reference number in previous year field when there has been a change, then the process of matching aims may not work correctly. This can create 2 records in the QAR dataset for the same aim: one using the old Learner reference number and one using the new Learner reference number. Where the aim from the earlier year's ILR file does not have any achievement data, this will reduce your QAR.

If you use the Learner reference number in previous year field when there **has not** been a change in the learner's Learner reference number, then this will prevent us from correctly matching that learner's aims.

You **must** remove the data from this field between years, as detailed in the [ILR specification](#), otherwise the learners will not match correctly.

Example:

Learner A has a Learner reference number of 'LNA1234' in 2020 to 2021. Due to a change in the provider's management information system, Learner A has a new Learner reference number in 2021 to 2022 of 'LRA9876'. For QARs to match correctly, you must record the references as follows:

- In 2020 to 2021:
 - Learner reference number = LNA1234
 - Learner reference number in previous year is not returned
- In 2021 to 2022:
 - Learner reference number = LRA9876
 - Learner reference number in previous year = LNA1234
- In 2023 to 2024:
 - Learner reference number = LRA9876
 - Learner reference number in previous year is not returned (2021/22 QAR cannot match if reported in R04)

Identifying overdue continuing aims and planned breaks

Continuing learning aims (with a Completion status of 1 'The learner is continuing or intending to continue the learning activities leading to the learning aim') in the R14 ILR

return for a funding year, that do not have a corresponding record in the following funding year, are treated as a withdrawal for the overall methodology.

For example, if the year you submitted the record on the ILR is '2021/2022' and there is no corresponding record in 2022 to 2023 R14 ILR return:

- the hybrid end year (Hybrid_End_Year) is set to 2022; and
- Overall_Leaver is set to 1; and
- Overall_Achiever is set to 0

If you subsequently return the record in the ILR in any of the years after, we will exclude it from your QAR so that the same record is not counted against QARs in two different years.

Aims where the learner is on a planned break (with a Completion status of 6 'Learner has temporarily withdrawn from the aim due to an agreed break in learning'), are treated as a withdrawal for the overall methodology where either of these apply:

- they do not have a corresponding restart record in the same funding year
- they do not have a corresponding restart record in the following funding year
- if the planned break was recorded in the ILR R14 return for funding year 2021 to 2022, they do not have a corresponding restart record in the R04 ILR return of the funding year 2023 to 2024

An ILR record is a restart record if it has a Learning Delivery Funding and Monitoring Type of 'RES' with a Learning Delivery Funding and Monitoring Code of 1 (Learning aim restarted).

We match restart records to planned break records by matching on UKPRN, Learner reference number, Programme type and Framework code or Standard code where the Original learning start date on the restart record matches the Learning start date or Original learning start date of the planned break record; this allows for situations where the planned break was itself a restart.

For example, an aim where the learner is on a planned break, that is submitted in the 2020 to 2021 ILR (YearAimSubmitted is '2020/21'), **has** a corresponding restart record if:

- the UKPRN, Learner reference number, Learning aim reference number Programme type and Framework code or Standard code on the planned break record is the same as the UKPRN, Learner reference number, Programme type and Framework code or Standard code on a restart record; and
- either the Learning start date or the Original learning start date on the planned break record is the same as the Original learning start date on the restart record; and
- the restart record was submitted in the 2020 to 2021, 2021 to 2022 or 2022 or 2023 ILR (YearAimSubmitted is '2020/21', '2021/22' or '2022/23')

If an aim where the learner is on a planned break that is submitted in the 2020 to 2021 ILR (YearAimSubmitted is '2020/21') **does not have** a corresponding restart record:

- the reporting year is set to one year after the later of the expected end year or actual end year; and
- Overall_Leaver is set to 1; and
- Overall_Achiever is set to 0

An aim where the learner is on a planned break, that is submitted in the 2021 to 2022 ILR (YearAimSubmitted is '2021/22'), **has** a corresponding restart record if:

- the UKPRN, Learner reference number, Programme type and Framework code or Standard code on the planned break record is the same as the UKPRN, Learner reference number, Programme type and Framework code or Standard code on a restart record; and
- either the Learning start date or the Original learning start date on the planned break record is the same as the original learning start date on the restart record; and
- the restart record was submitted in the 2021 to 2022 or 2022 to 2023 ILR, or the 2023 to 2024 R04 ILR (YearAimSubmitted is '2021/22', '2022/23' or '2023/24')

If an aim where the learner is on a planned break that is submitted in the 2021 to 2022 ILR (YearAimSubmitted is '2021/22'), **does not have** a corresponding restart record:

- the reporting year is set to one year after the later of the expected end year or actual end year; and
- Overall_Leaver is set to 1; and
- Overall_Achiever is set to 0

QAR calculations

We use the following fields from the QAR dataset to calculate the overall QARs:

- **Hybrid end year (Hybrid_End_Year)** - This field is the later of the achievement year (Achievement_Year), actual learning end year (Actual_End_Year), expected learning end year (Expected_End_Year), or the reporting year.
- **Overall_Leaver** - This field indicates whether the programme aim has ended, or it is an overdue continuing learning aim or an overdue continuing planned break.
- **Overall_Achiever** - This field indicates whether a programme aim has been achieved (achieved learning aims have an Outcome of 1 (Achieved)).

For each funding year the overall QAR percentage is:

$$\frac{\text{Number of programmes that have been achieved}}{\text{Number of programmes that have ended}} \times 100$$

For each hybrid end year (Hybrid_End_Year) the overall QAR percentage is:

$$\frac{\text{Number of programme aims where Overall_Achiever is 1}}{\text{Number of programme aims where Overall_Leaver is 1}} \times 100$$

Further Information

Please also use the [QAR collections page](#) that has links to the relevant QAR business rules, technical specifications, National Achievement Rate tables and guidance.

If you have any queries in relation to QAR, please contact us via our [online enquiry form](#) and select the QAR query type. Where the enquiry relates to specific learner queries, please also complete and submit the data query form which can be downloaded from the [QAR collections page](#) under the relevant academic year.

Contents of the QAR dataset

The following reference files are used in some of the derivations:

- a) The 2022/2023 Framework lookup file – this file holds programme aim information from the Learning Aims Reference System (LARS) as at the hard close of the 2022 to 2023 ILR (19 October 2023).
- b) The 2022/2023 Standard lookup file – this file holds programme aim information from the Learning Aims Reference System (LARS) at the hard close of the 2022 to 2023 ILR (19 October 2023).
- c) The 2022/2023 Provider Details file – this file holds providers’ details from the Provider and Organisation Information Management System (PIMS), as at 31 July 2023.
- d) The 2022/2023 Funded Provider Details file – this file holds details of providers who received funding for the funding year.
- e) We obtain the lookup used to determine the delivery region and delivery local authority of a delivery location postcode from the National Statistics Postcode Lookup (UK) May 2023. This will be available to download from the Office of National Statistics website.

Data item	Description	Data values	Source (ILR)	Derivation
AchDate	The achievement date (DDMMYYYY). Only collected for apprenticeship standards.		ILR standard files	Set to Achievement Date .
Age_Band	A banding of the age on the start of the apprenticeship programme.	1 = 16 to 18 2 = 19 to 23 3 = 24 or more	Derived	Set to 1 if D_AgeAimStart is 0 to 18. Set to 2 if D_AgeAimStart is 19 to 23. Set to 3 if D_AgeAimStart or 24 or greater, or unknown.

Data item	Description	Data values	Source (ILR)	Derivation
App_Stand_NoNetPay_Excl	Indicates a learner on a trailblazer pilot standard without a net employer contribution payment being recorded.	0 or 1	Derived	Set to 1 if: <ul style="list-style-type: none"> the Programme Type is 25, the Funding Model is 81; and the sum of the Payment Records in the ILR Apprenticeship Financial Record entity with codes 1 and 2 MINUS the sum of the Payment Records with code 3 is zero Otherwise set to 0.
Apprenticeship_Level	The level of the apprenticeship.		LARS lookups	If the Programme Type is 25, set to the Level from the Standard lookup. Otherwise, set to the Level from the Framework lookup.
CampusID	The campus identifier of the programme aim.		ILR standard files	Set to Campus ID .
CompStatus	The completion status of the programme aim.		ILR standard files	Set to 4 if the Completion Status is 3 and the Withdrawal Reason is 40. Otherwise, set to Completion Status .
D_AgeAimStart	The age of the apprentice on the start date of the programme aim.		ILR standard files	Set to the value of the ILR derived variable D_AgeAimStart .
Datasource	The source of the record on the QARs dataset.	ILR	Derived	Set to 'ILR'.

Data item	Description	Data values	Source (ILR)	Derivation
DelLocPostCode	The postcode of the delivery location.		ILR standard files	Set to Delivery Location Postcode .
DelLocPostCode_GOR	The delivery location postcode Government office region.		Postcode lookup	Obtained from the National Statistics Postcode Lookup (UK) May 2023.
DelLocPostCode_LocalAuthority	The delivery location postcode local authority district.		Postcode lookup	Obtained from the National Statistics Postcode Lookup (UK) May 2023.
EOP_Excl	Indicates that the programme aim is former EOP provision.	0 or 1	Derived	Set to 1 if and there is a Learning Delivery Funding and Monitoring Type of 'LDM' with a Learning Delivery Funding and Monitoring Code of 351 (Former Employer Ownership Pilot). Otherwise set to 0.
Ethnicity	The apprentice's ethnic background.		ILR standard files	Set to Ethnicity .
Framework_Standard_Filter	Indicates whether the apprenticeship is a framework or a standard.	Framework or Standard	Derived	Set to 'Standard' if the Programme Type is 25. Otherwise set to 'Framework'.
FreeMeals	Indicates that the learner is eligible for free meals, or is eligible and receiving free meals. 19+ learners are not eligible for free meals.		Derived	If the Learner Funding and Monitoring Type is 'FME' and the Learner Funding and Monitoring Code is 1 or 2 (14-15 year old learner is eligible for free meals OR 16-19 year old learner is eligible for and in receipt of free meals), set to the Learner Funding and Monitoring Code , otherwise set to -1.

Data item	Description	Data values	Source (ILR)	Derivation
Fund_Qual_Excl	<p>Indicates that the learner has withdrawn from a learning aim before the qualifying number of days for funding has been met.</p> <p>(The qualifying period for funding aims with a planned duration of less than 14 days is 1 day. Fund_Qual_Excl is always set to 0 for aims with a planned duration of less than 14 days.)</p> <p>This does not apply to trailblazer pilot standards.</p>	0 or 1	Derived	<p>The planned duration of the aim, in days, is the difference between the Learning Start Date and the Learning Planned End Date.</p> <p>The actual duration of the aim, in days is the difference between the Learning Start Date and the Learning Actual End Date.</p> <p>Set to 1 if the Programme Type is not 25, or the Programme Type is 25 and the Funding Model is not 81; and</p> <ul style="list-style-type: none"> • the planned duration is 168 days or more, the actual duration is less than 42 days and the Completion Status is 3 (Withdrawn); or • the planned duration is between 14 and 167 days, the actual duration is less than 14 days and the Completion Status is 3 (Withdrawn) <p>And</p> <ul style="list-style-type: none"> • the Restart Indicator is 0 (Not a Restart); or • the Restart Indicator is 1 (Restart) and <ul style="list-style-type: none"> ○ the original UKPRN does not equal the new UKPRN ○ the original Learning Actual End Date is less than the new Learning Start Date ○ we can find an apprenticeship on the same ULN at the original UKPRN <p>Otherwise set to 0.</p>
FworkCode	Framework code.		ILR standard files	Set to Framework Code .

Data item	Description	Data values	Source (ILR)	Derivation
FworkName	Framework name.		Derived	Set to FworkName from the framework lookup.
High_Needs_Students	Indicates that the learner is a high needs student in receipt of element 3 'top-up' funding from the local authority	0 or 1	ILR standard files	Set to L_HNS
L_PriorPcode	The apprentice's home postcode.		ILR standard files	Set to L_PriorPcode (Postcode prior to enrolment)
L_PriorPcode_GOR	The apprentice's home postcode Government office region.		Postcode lookup	Obtained from the National Statistics Postcode Lookup (UK) May 2023.
L_PriorPcode_LocalAuthority	The apprentice's home postcode local authority district.		Postcode lookup	Obtained from the National Statistics Postcode Lookup (UK) May 2023.
LearnActEndDate	The learning actual end date (DDMMYYYY).		ILR standard files	Set to Learning Actual End Date .
LearnPlanEndDate	The learning planned end date (DDMMYYYY).		ILR standard files	Set to Learning Planned End Date .
LearnRefNumber	The learner reference number.		ILR standard files	Set to Learner Reference Number .
LearnStartDate	The learning start date (DDMMYYYY).		ILR standard files	Set to Learning Start Date .
LLDDHealthProb	Indicates whether the apprentice considers that they have a learning difficulty, disability, or health problem.		ILR standard files	Set to LLDD and Health Problem .

Data item	Description	Data values	Source (ILR)	Derivation
LSD_Before_EFD_Excl	Identifies whether the learning start date of the apprenticeship standard falls before the effective from date as recorded in LARS.	0 or 1	Derived	Set to 1 if the Programme Type is 25, and the Learning Start Date on the ILR record is earlier than the earliest Effective From Date as recorded in LARS, matching on Standard Code . Otherwise set to 0.
Not_Funded_Excl	Identifies whether an apprenticeship has ever received funding from us. Non-funded aims are excluded from QARs.	0 or 1	Derived	Set to 0 if the Funding Model is not 99 (No ESFA funding) in any year. Otherwise set to 1.
Orig_Learn_Start_Date	The original date that the learner commenced the learning on the original aim. This is only applicable where the aim is a restart (DDMMYYYY)		ILR standard files	
Outcome	The learning outcome of the programme aim.		ILR standard files	Set to Outcome .
Overdue_Continuing_Aim	Indicates whether the aim is an overdue continuing aim.	0 or 1	Derived	Set to 1 if the aim is an overdue continuing learning aim (as identified in section Identifying overdue continuing aims and planned breaks), otherwise set to 0.
Overdue_Planned_Break	Indicates whether the aim is an overdue planned break.	0 or 1	Derived	Set to 1 if the aim is an overdue planned break (as identified in section Identifying overdue continuing aims and planned breaks), otherwise set to 0.

Data item	Description	Data values	Source (ILR)	Derivation
Overall_Achiever	For the overall QAR measure, this indicates whether the programme aim has been achieved.	0 or 1	Derived	Set to 1 if: <ul style="list-style-type: none"> • Learning_Outcome is 1 (Achieved); and • the Achievement Date is not later than 31 July 2023 (where returned on the ILR for learners on Programme Type of 25 and a Funding Model of 36); or • the Learning Actual End Date is not later than 31 July 2023 (for all other records that do not meet the above criteria) Otherwise set to 0.
Achievement_Year	The achievement year of the programme aim (20_ _).		Derived	When the completion status is 2 and the Achievement Date is complete, set to the first calendar year of the funding period the Achievement Date falls in – where returned on the ILR for learners on Programme Type of 25 and a Funding Model of 36, When the Completion status is 1 and Outcome is 8 set to 0, Else set to -1. (For example, if the Achievement Date falls in the 2022 to 2023 funding year, Achievement_Year has the value of 2022)

Data item	Description	Data values	Source (ILR)	Derivation
Actual_End_Year	The actual end year of the programme aim (20__).		Derived	Set to the first calendar year of the funding period the Learning Actual End Date falls in. (For example, if the Learning Actual End Date falls in the 2022 to 2023 funding year, Actual_End_Year has the value of 2022)
Overall_Leaver	For the overall QAR measure, this indicates whether the record should be counted towards the overall QAR.	0 or 1	Derived	Set to 1 if: <ul style="list-style-type: none"> • (Learning Actual End Date is present; and the Learning Actual End Date is no later than 31 July 2023); or • (Achievement Date is present; and the Achievement Date is no later than 31 July 2023 – where returned on the ILR for learners on Programme Type of 25 and a Funding Model of 36); or • Overdue_Continuing_Aim = 1; or • Overdue_Planned_Break = 1 Otherwise set to 0.
Expected_End_Year	The expected end year of the programme aim (20__).		Derived	Set to the value of the first calendar year of the funding period the Learning Planned End Date falls in. (For example, if the Learning Planned End Date falls in the 2022 to 2023 funding year, Actual_End_Year has the value of 2022)
Hybrid_End_Year	The hybrid end year of the programme aim (20__).		Derived	Set to: <ul style="list-style-type: none"> • the achievement year (Achievement_Year); or • the actual learning end year (Actual_End_Year); or • the expected learning end year (Actual_End_Year); • the reporting year whichever is higher.

Data item	Description	Data values	Source (ILR)	Derivation
Start_Year	The start year of the programme aim (20__).		Derived	Set to the value of the first calendar year of the funding period the Learning Start Date falls in. (For example, if the Learning Start Date falls in the 2022 to 2023 funding year, Start_Year is set to 2022)
PathwayCode	The pathway of the apprenticeship framework being undertaken.		ILR standard files	Set to Apprenticeship Pathway .
PathwayName	The pathway name on the final matched record.		Derived	Set to PathwayName from the framework lookup.
Pilot_Excl	Apprenticeship seasonal worker pilot learning aims are excluded from QARs.	0 or 1	Derived	Set to 1 if and there is a Learning Delivery Funding and Monitoring Type of 'LDM' with a Learning Delivery Funding and Monitoring Code of 348 (Apprenticeship seasonal worker pilot).
Plan_Break_Overall_Excl	For the overall QAR measure, this indicates that the apprentice is on a planned break. Planned break aims are excluded from QAR.	0 or 1	Derived	Set to 1 if: <ul style="list-style-type: none"> Completion_Status is 6 (break in learning); Overdue_Plan_Break = 0; and the Learning Actual End Date is no later than 31 July 2023 Otherwise set to 0.
Plan_Break_Timely_Excl	For the timely QAR measure, this indicates whether the apprentice is on a planned break. Planned break aims are excluded from QAR.	0 or 1	Derived	Set to 1 if: <ul style="list-style-type: none"> Completion_Status is 6 (break in learning); the Learning Planned End Date is not later than 31 July 2023; and the Learning Actual End Date is on or before the Learning Planned End Date, or no more than 90 days after it Otherwise set to 0.
PrimaryLLDD	The primary learner disability, learning difficulty or and heath problem of the learner.		ILR standard files	Set to LLDDCat where PrimaryLLDD is 1.

Data item	Description	Data values	Source (ILR)	Derivation
PriorAttain	The learner's prior attainment level.		ILR standard files	Set to Prior Attainment .
ProgType	The programme type.		ILR standard files	Set to Programme Type .
Provision_Type	Identified as apprenticeship aim	Apps	Derived	Set to 'Apps'.
Restart_Indicator	Indicates whether the learner restarted the apprenticeship programme.	0 or 1	ILR standard files	Set to D_Restart .
QAR_Status_Overall	Indicates whether or not the record is included in the provider's overall QAR calculations.	QAR Inclusions QAR Exclusions	Derived	Set to 'QAdR Exclusions' if the aim is not included in overall QAR calculations. Otherwise set to 'QAR Inclusions'. For most excluded aims, a specific exclusion flag will also be set.
SectorSubjectAreaTier1	Sector subject area – the broad (tier 1) classification of the subject of the programme aim.		Derived	Set to SectorSubjectAreaTier1 from the framework or standard lookup.
SectorSubjectAreaTier2	The more specialised classification (tier 2) of the subject of the programme aim.		Derived	Set to SectorSubjectAreaTier2 from the framework or standard lookup.
Sex	The apprentice's sex.		ILR standard files	Set to Sex .
StdCode	Standard code.		ILR standard files	Set to Standard Code .
StdName	Standard name.		Derived	Set to StdName from the Standard lookup.

Data item	Description	Data values	Source (ILR)	Derivation
Subcontractor_Name	The subcontractor's name.		ILR 2022 to 2023 provider details file	The name of the subcontracting provider, from the ILR 2022 to 2023 provider details file.

Data item	Description	Data values	Source (ILR)	Derivation
Subcontractor_UKPRN	The UKPRN of the partner provider that delivered the main assessment aim or competency aim of an apprenticeship.		Derived	<p>Set to the Subcontracted or Partnership UKPRN of the competency learning aim of the apprenticeship. The competency learning aims is identified from the LARS.</p> <p>The component aims of an apprenticeship programme are those where:</p> <ul style="list-style-type: none"> • Aim Type is 3 (Component learning aim within a programme); • UKPRN is the same as the UKPRN of the programme aim; • Learner Reference Number is the same as the Learner Reference Number of the programme aim; • Framework Code is the same as the Framework Code of the programme aim; • Programme Type is the same as the Programme Type of the programme aim; and • Learning Start Date is the same as the Learning Start Date of the programme aim <p>Each component aim of the apprenticeship is checked against LARS . The component learning aim is the competency aim where:</p> <ul style="list-style-type: none"> • Learning Aim Reference is the same as LearnAimRef on LARS; • Framework Code is the same as FworkCode on LARS; • Programme Type is the same as ProgType on LARS; • Apprenticeship Pathway is the same as PwayCode on LARS; and • FrameworkComponentType on LARS is 1
Software_Supplier_Aim_ID	The software supplier's aim identifier of the aim.		ILR standard files	Set to SWSupAimID .

Data item	Description	Data values	Source (ILR)	Derivation
Transfer_Overall_Excl	For the overall QAR measure, this indicates that the apprentice has transferred to another apprenticeship programme within the same provider. Transfer aims are not included in QAR.	0 or 1	Derived	<p>Set to 1 if:</p> <ul style="list-style-type: none"> (Completion_Status is 3 (The learner has withdrawn from the learning activities leading to the learning aim), the Withdrawal_Reason is 40 (Learner has transferred to a new learning aim with the same provider) and a later programme record exists with a Learning Start Date no more than 120 days after the Learning Actual End Date of the programme with a matching ULN and UKPRN), or (Completion_Status is 3 and Withdrawal Reason is 7), or (WithdrawalReason is 47 and a programme record exists with a Learning Start Date no more than 30 days after the Learning Actual End Date of the programme matching ULN and a different UKPRN); and the Learning Actual End Date is no later than 31 July 2023 <p>Otherwise set to 0.</p>
UKPRN	The UK provider reference number (UKPRN).		ILR standard files	Set to UK Provider Reference Number .
UKPRN_orig	The UKPRN of the programme aim before the college merger process was applied to a provider's data.		Derived	Further detail on college structural change can be found in the QAR business rules
ULN	Unique learner number.		ILR standard files	Set to Unique Learner Number .

Data item	Description	Data values	Source (ILR)	Derivation
Withdrawal_Reason	The reason learning ended.		ILR standard files	Set to Withdrawal Reason .
Year	The current funding year for the QARs dataset.	2022/23	Derived	Set to '2022/23'.
YearAimSubmitted	The funding year which the aim was submitted in.		Derived	Set to: <ul style="list-style-type: none"> • '2018/19' if from the 2018 to 2019 ILR • '2019/20' if from the 2019 to 2020 ILR • '2020/21' if from the 2020 to 2021 ILR • '2021/22' if from the 2021 to 2022 ILR • '2022/23' if from the 2022 to 2023 ILR • '2023/24' if from the 2023 to 2024 ILR.

Calculating the hybrid end year

To understand the logic that hybrid end year uses, it is important to highlight the key QAR derived variables that we use to calculate the hybrid end year, and then how we use these in the calculation. The following examples relate to the 2022 to 2023 QAR data set and we refer to this as the current QAR.

The key derived variables are:

- Achievement Year – this is the same as Achievement_Year
- Actual End Year – this is the same as Actual_End_Year
- Planned End Year – this is the same as Expected_End_Year
- Reporting Year – this refers to the academic year you submitted the learning aim to us. If the academic year is after the current QAR year, then we set this variable to 2022.5 (for example, if you report the learning aim in 2023 to 2024).
- Overdue Continuing Aim – this is the same as Overdue_Continuing_Aim
- Overdue Planned Break – this is the same as Overdue_Planned_Break
- Year First Reported Completed – this refers to the academic year you first reported the record with a Completion status of code 2 ('Complete') or 3 ('Withdrawn'). If the academic year you first reported the record with a Completion status of code 2 or 3 is after the current QAR year, then we set this variable to 2022.5 (for example, if you report the learning aim in 2023 to 2024).

We then implement two steps to calculate the hybrid end year:

Step 1

We assign all records an initial value in step 1, based on the Achievement Year (Achievement_Year), Actual End Year (Actual_End_Year) and Planned End Year (Expected_End_Year) derived variables. The table below explains the conditions we use to set the values. If the data does not meet the first condition, then we apply the second condition. If the data does not meet the second condition, then we apply the third condition.

Condition	Outcome	Example
<p>If the Programme Type is 25, and the Funding Model is 36, and...</p> <p>the achievement year is unpopulated, and the ILR data was last reported in 2022/23 or after...</p> <p>OR</p> <p>the achievement year is populated, and the ILR data was last reported in 2020/21 with a 2022/23 achievement date...</p> <p>OR</p> <p>If the Programme Type is 25 and the Funding Model is not 36; or the Programme Type is not 25; and the actual end year is unpopulated...</p>	<p>...we set hybrid end year to 2022.5.</p>	
<p>If the planned end year is greater than or equal to the actual end year and achievement year...</p>	<p>...we set hybrid end year to equal the planned end year.</p>	<p>The planned end date is 31/08/2023. The actual end date is 30/05/2023. The achievement date is 30/08/2023.</p> <p>The planned end year is 2023. The actual end year is 2022. The achievement year is 2023.</p> <p>2023 is greater than 2022, so the hybrid end year is set to 2022.5.</p>

If the achievement year is greater than or equal to the actual end year...	...we set hybrid end year to equal the achievement year.	The actual end date is 30/05/2023. The achievement date is 30/08/2023. The actual end year is 2022. The achievement year is 2023. 2023 is greater than 2022, so the hybrid end year is set to 2022.5.
Else...	...we set hybrid end year to equal the actual end year.	

Step 2

We use the output from step 1 for step 2, when we account for the other derived variables.

Condition	Outcome	Example
If the record is marked as an overdue continuing aim...	...we set the hybrid end year to the maximum value recorded in the actual end year, planned end year and reporting year derived variables.	The record is marked as an overdue continuing aim, the reporting year is 2020, the actual end year is unpopulated and the planned end year is 2022. The hybrid end year is set to 2022.
If the record is marked as an overdue planned break and the hybrid end year from step 1 is after the current QAR year...	...we set the hybrid end year to 2022.5.	
If the record is marked as an overdue planned break and the hybrid end year from step 1 is not after the current QAR year...	...we set the hybrid end year to the hybrid end year from step 1 plus one year.	The record is marked as an overdue planned break, the planned end year is 2021 and the actual end year is 2020. The hybrid end year from step 1 is 2021, the hybrid end year in step 2 is set to 2021 plus one year, so the hybrid end year is set to 2022.
If the year first reported completed is after the hybrid end year from step 1...	...we set the hybrid end year to equal the first year reported complete.	The planned end year is 2021, the actual end year is 2020, the year first reported complete is 2022. The hybrid end year from step 1 is 2021, the year first reported complete is after this, so the hybrid end year is set to 2022.

Else...	...hybrid end year is set to the value from step 1.	
---------	---	--

Further examples

The following table gives some more examples using the steps given above.

Key criteria	Hybrid end year and explanation
<ul style="list-style-type: none"> Planned end date = 20/05/23 Actual end date (AED) = 20/05/22 AED first reported in 2021/23 	2022/23 – because the later of the 3 dates is in the 2022 to 2023 funding year.
<ul style="list-style-type: none"> Planned end date = 20/05/23 Actual end date = 25/07/23 AED first reported in 2021/23 	2022/23 – because the later of the 3 dates is in the 2022 to 2023 funding year.
<ul style="list-style-type: none"> Planned end date = 20/06/23 Actual end date = 25/07/23 AED first reported in R04 2023/24 rather than occurring in 2021/22 	2023/24 – because the later of the 3 dates is in the 2023 to 2024 funding year.
<ul style="list-style-type: none"> Planned end date = 20/08/23 Actual end date = 25/07/23 AED first reported in 2021/23 	2023/24 – because the later of the 3 dates is in the 2023 to 2024 funding year.
<ul style="list-style-type: none"> Planned end date = 20/05/23 Actual end date = 25/07/23 AED first reported in 2022/23 AED then corrected to a month earlier in R04 2023/24 to 25/06/23 	<p>2022/23 – because the later of the 3 dates is in the 2022 to 2023 funding year.</p> <p>The actual end date was first reported in 2022 to 2023, so we discount the second instance that was reported in 2023 to 2024</p>
<ul style="list-style-type: none"> Planned end date = 22/06/22 Actual end date = 26/04/22 AED first reported in 2021/22 Achievement Date = 06/12/22 	2022/23 – because Achievement date is the later of the dates and is in the 2022 to 2023 funding year.



Department
for Education

© Crown copyright 2023

This publication is licensed under the terms of the Open Government Licence v3.0 except where otherwise stated. To view this licence, visit nationalarchives.gov.uk/doc/open-government-licence/version/3.

Where we have identified any third-party copyright information you will need to obtain permission from the copyright holders concerned.

About this publication:

enquiries www.education.gov.uk/contactus

download www.gov.uk/government/publications



Follow us on Twitter:
[@educationgovuk](https://twitter.com/educationgovuk)



Like us on Facebook:
facebook.com/educationgovuk