



Department  
for Education

# **Traineeship qualification achievement rates technical specification 2022 to 2023**

**Version 1.0 July 2023**

## Contents

Introduction and purpose of the document	3
Understanding the terminology	3
Changes from the 2021 to 2022 technical specification document	3
Traineeship QAR methodology	4
Identifying Traineeship aims	4
Exclusions from traineeship QARs	5
Processing standard files	10
Process flow diagram	10
Matching learning aims across years	11
Processing learner reference number changes	11
Identifying overdue continuing aims and planned breaks	13
Qualification achievement rate calculations	15
Further Information	16
Contents of the QAR dataset	17
Calculating the hybrid end year field in the QAR dataset	31
Step 1	31
Step 2	33

## Introduction and purpose of the document

This document provides technical information that explains how we process information provided in the Individualised Learner Record (ILR) data collection to produce the qualification achievement rates (QAR) dataset.

This dataset produces the traineeship 2022 to 2023 QAR products. This document also provides information about how we generate the information in the QAR dashboard.

Please read this document alongside the [ILR standard file specifications and reference data documents](#) and the relevant QAR business rules, technical specifications, National Achievement Rate tables and guidance on links available from the [QAR collections page](#).

## Understanding the terminology

The term 'we' refers to the 'Department for Education' (DfE) or Education and Skills Funding Agency' (ESFA), an executive agency sponsored by the Department for Education (DfE) and associated staff.

When we refer to 'you' or 'providers', this includes colleges, training organisations, local authorities and employers that report Traineeships recorded in the ILR where the Programme Type is 24 (Traineeship)

## Changes from the 2021 to 2022 technical specification document

Data submitted using the Individualised Learner Record (ILR) for the last 5 years is used to create a QAR dataset for reporting. Historically, we have utilised the Learner Reference Number to match learning aims across ILR files. From 2022 to 2023 we are reviewing matching on the Unique Learner Number (ULN) and where we are unable to do so we will match on Learner Reference Number (LRN). The section [Matching learning aims across years](#) provides further detail.

## Traineeship QAR methodology

The traineeship QAR methodology has 3 measures – one programme level QAR and 2 component level QARs ('English and maths' and 'Flexible learning').

- the programme level QAR identifies whether the learner has progressed onto a positive outcome following their traineeship
- the component level QARs are a measure of the quality of the component courses that a provider ran in particular funding year.
- We base the programme level QAR on the hybrid end year. The hybrid end year is the later of:
  - the programme actual end year
  - the outcome start year
  - the planned end year
  - the reporting year

We base the component level QAR hybrid end year on the later of:

- the actual end year of a learning aim
- the planned end year of a learning aim
- the reporting year

We include the reporting year to capture those overdue continuing learning aims, overdue planned breaks or late completions recorded in the following academic year (up to R04). See later section [Calculating the hybrid end year field in the QAR dataset](#) for further details on how we calculate the hybrid end year.

The learning aims included in the 2022 to 2023 QAR are those with a hybrid end year of 2022 to 2023.

There can be a delay between completing a learning aim and the notification of the achievement. To account for this delay and ensure all relevant leavers are included, we use information from the 2023 to 2024 R04 ILR return to identify learning aims with a planned end date in 2022 to 2023. If you update records in your 2023 to 2024 R04 return that you submitted in your 2022 to 2023 R14 return, then we will use the R04 record to determine your QAR.

## Identifying Traineeship aims

We identify learning aims where the Programme Type is 24 (Traineeship).

We identify programme aims as having a positive outcome if the record has an associated destination or progression record, with an outcome of

- EDU 2 (Education – Apprenticeship)
- EDU 4 (Education – Other FE\* (Full-time))

- EDU 5 (Education – Other FE\* (Part-time))
- EMP 1 (In Paid Employment – In paid employment for 16 hours or more per week)
- EMP 3 (In Paid Employment – Self-employed)
- EMP 4 (In Paid Employment - Self-employed for 16 hours or more per week)

## Exclusions from traineeship QARs

The business rules describe how we calculate the QARs, and which learning aims will not be included in the QAR calculations.

We exclude some learning aims from QARs to ensure the results are more credible and appropriate. The reasons include (and this is not an exhaustive list):

if we do not fund the qualification

if it is affected by circumstances where we have agreed an exception (for example, if the learner is transferred to a new provider due to intervention from us)

The table below describes the scenarios where we exclude learning aims. The definition of the derived variables below are in the ILR standard file specifications and reference data documents.

Description	Rules for identifying the excluded aim
A learner has transferred to a new provider due to a college merger.	<p>Aims where the <b>Withdrawal Reason</b> is 47 (Learner has transferred to another provider due to a college merger), and the <b>Learning Actual End Date</b> is less than the <b>Learning Start Date</b> on the new UKPRN (matching on Unique Learner Number).</p> <p>The <b>Learning Start Date</b> on the new UKPRN must be within 30 days or less than the <b>Learning Actual End Date</b> on the original UKPRN.</p>
Learning aims where the learner has transferred to a different aim with the same provider.	<p>Aims where:</p> <ul style="list-style-type: none"> <li>• the Completion Status is 3 (Learner has withdrawn from the learning activities leading to the learning aim); and</li> <li>• the Withdrawal Reason is 40 (Learner has transferred to a new learning aim with the same provider); and</li> <li>• a new aim is recorded (matching on Unique Learner Number and UKPRN) with a <b>Learning Start Date</b> that is 120 days or less after the <b>Learning Actual End Date</b> of the original aim.</li> </ul>

Description	Rules for identifying the excluded aim
<p>Learning aims where the learner has temporarily withdrawn from the aim due to an agreed break in learning.</p>	<p>Aims where the <b>Completion Status</b> is 6 (Learner has temporarily withdrawn from the aim due to an agreed break in learning).</p> <p>Under certain circumstances, we do not exclude learning aims where the learner has temporarily withdrawn from the aim due to an agreed break in learning. See later section <a href="#">Identifying overdue continuing aims and planned breaks</a> for further detail.</p>
<p>Learning aims where a learner has transferred to a new provider because of intervention from us.</p>	<p>Aims where the <b>Withdrawal Reason</b> is 7 or 41 (Learner has transferred between providers due to intervention by or with the written agreement of the Education and Skills Funding Agency <b>OR</b> Learner has transferred to another provider to undertake learning that meets a specific government strategy).</p>

Description	Rules for identifying the excluded aim
<p>Learning aims where the learner has withdrawn from the learning aim within the funding qualifying period, and the learning aim is not achieved.</p> <p>We exclude learners who restarted with the same provider in this exclusion rule, as the original instance of learning will have passed the funding qualifying period.</p>	<p>Aims where:</p> <ul style="list-style-type: none"> <li>• the planned duration is 168 days or more</li> <li>• the actual duration is less than 42 days</li> <li>• the <b>Completion Status</b> is 3 (Learner has withdrawn from the learning activities leading to the learning aim)</li> <li>• the <b>Restart Indicator</b> is 0 (Not a Restart)</li> </ul> <p>Aims where:</p> <ul style="list-style-type: none"> <li>• the planned duration is 168 days or more</li> <li>• the actual duration is less than 42 days</li> <li>• the <b>Completion Status</b> is 3 (Learner has withdrawn from the learning activities leading to the learning aim)</li> <li>• the <b>Restart Indicator</b> is 1 (Restart); and <ul style="list-style-type: none"> <li>o the new Learning Start Date is greater than the original Learning Actual End Date of the traineeship on the original UKPRN</li> </ul> </li> </ul> <p>Aims where:</p> <ul style="list-style-type: none"> <li>• the planned duration is between 14 and 167 days</li> <li>• the actual duration is less than 14 days</li> <li>• the <b>Completion Status</b> is 3 (Learner has withdrawn from the learning activities leading to the learning aim)</li> <li>• the <b>Restart Indicator</b> is 0 (Not a Restart)</li> </ul> <p>Aims where:</p> <ul style="list-style-type: none"> <li>• the planned duration is between 14 and 167 days</li> <li>• the actual duration is less than 14 days</li> <li>• the <b>Completion Status</b> is 3 (Learner has withdrawn from the learning activities leading to the learning aim)</li> <li>• the <b>Restart Indicator</b> is 1 (Restart); and <ul style="list-style-type: none"> <li>o the new Learning Start Date is greater than the original Learning Actual End Date of the traineeship on the original UKPRN</li> </ul> </li> </ul> <p>There is no qualifying period for aims with a planned duration of less than 14 days.</p> <p>The planned duration of the aim, in days, is the difference between the <b>Learning Start Date</b> and the <b>Learning Planned End Date</b>.</p> <p>The actual duration of the aim, in days, is the difference between the <b>Learning Start Date</b> and the <b>Learning Actual End Date</b>.</p>
<p>Aims where unemployed learners claiming Universal Credit, Jobseeker's Allowance (JSA) or Employment and Support Allowance (ESA) in the Work Related Activity Group (WRAG) cannot continue their learning through to successful completion because they have started work</p>	<p>For ILR files for 2017 to 2018 onwards, aims where:</p> <ol style="list-style-type: none"> <li>1. the <b>Completion Status</b> is not 1 (Learner is continuing or intending to continue the learning activities leading to the learning aim);</li> <li>2. the <b>Outcome</b> is not 1 (Achieved);</li> <li>3. the <b>Employment Outcome</b> is 1 or 2 (Employment outcome (with training) gained on eligible funded programme <b>OR</b> Employment outcome (without training) gained on eligible funded programme);</li> <li>4. a Learner Employment Status record exists with an <b>Employment Status</b> of 11 or 12 (Not in paid employment, looking for work and</li> </ol>

Description	Rules for identifying the excluded aim
	<p>available to start work <b>OR</b> Not in paid employment, not looking for work and/or not available to start work) and a <b>Date Employment Status Applies</b> earlier than the <b>Learning Aim Start Date</b>; and</p> <ul style="list-style-type: none"> <li>o the latest ILR for the learner has an <b>Employment Status Monitoring Type</b> of BSI (Benefit status indicator) and an <b>Employment Status Monitoring Code</b> of 1 or 2 (Learner is in receipt of Job Seekers Allowance (JSA) <b>OR</b> Learner is in receipt of Employment and Support Allowance - Work Related Activity Group (ESA WRAG)); or</li> <li>o (the latest ILR for the learner has an <b>Employment Status Monitoring Type</b> of BSI (Benefit status indicator) and an <b>Employment Status Monitoring Code</b> 4 (Learner is in receipt of Universal Credit); and</li> </ul> <p>the <b>Employment Status</b> on the first day of learning is 11 (Not in paid employment, looking for work and available to start work); and</p> <p>there is a <b>valid length of unemployment</b>)</p>
Learning aims that have not been funded by us, or not financed by an advanced learner loan	Aims where if <b>D_FEFund</b> is not 1 (ESFA formula funding), not 2 (ESFA non formula funding).

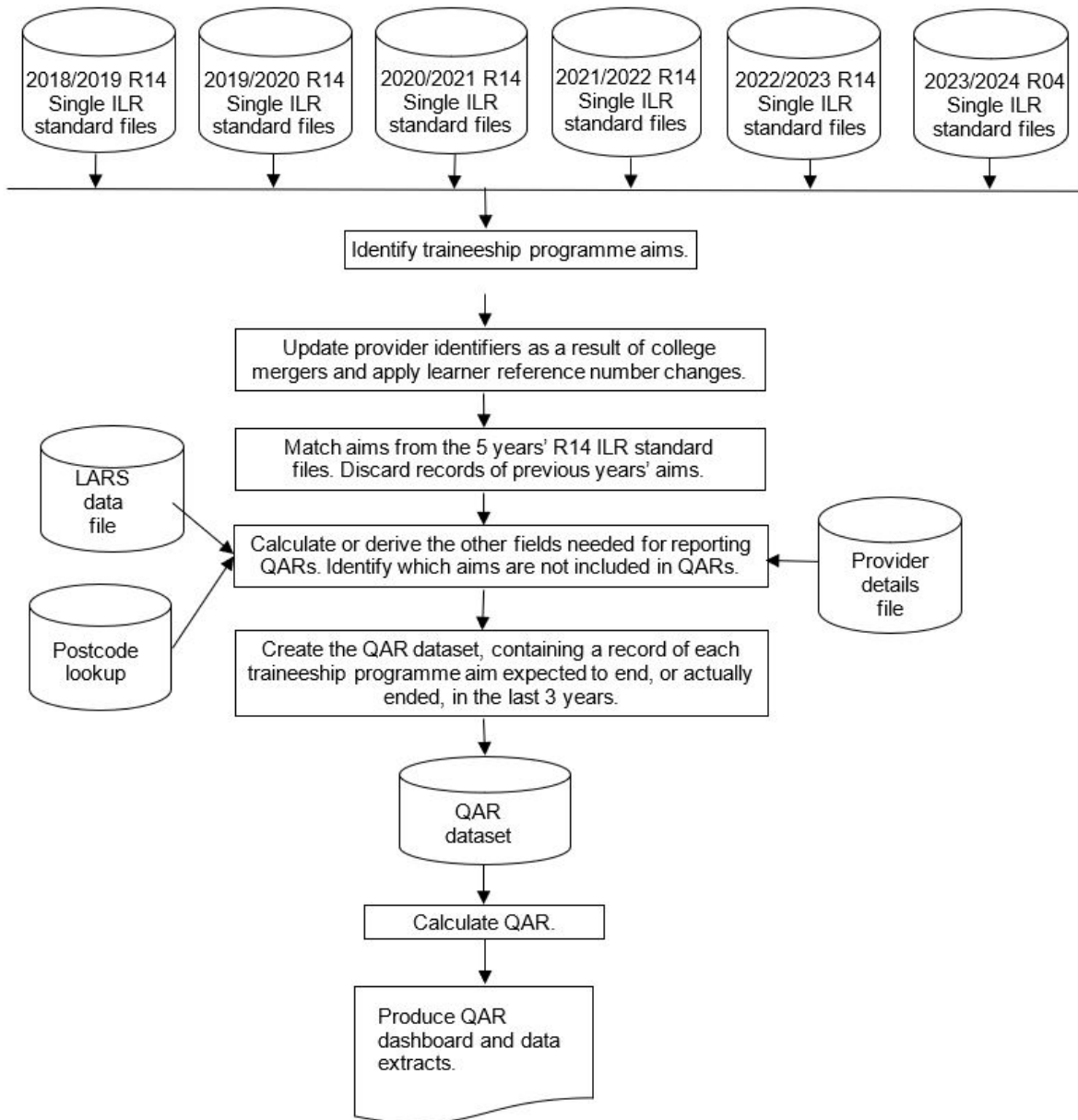


Description	Rules for identifying the excluded aim
Supported internships	Aims where the <b>Learning Aim Reference</b> is 'Z0002347'
Work experience or work placement aims	Aims where the <b>Learning Aim Reference</b> is 'Z0007834' to 'Z0007838', or 'ZWRKX001' to 'ZWRKX009'.
<p>Changes to records previously submitted 2 or more years ago.</p> <p>The example given is for aims reported in 2021 to 2022. The exclusion also applies to aims reported in 2020 to 2021 or 2019 to 2020 that meet the same conditions for the corresponding earlier years.</p>	<p>For aims reported in the 2021to 2022 ILR, that were previously reported in the 2019 to 2020 ILR or earlier, and not reported in the 2020 to 2021 ILR. Where:</p> <ul style="list-style-type: none"> <li>• the actual or planned end dates are not in 2021 to 2022 or later,</li> <li>• the record was first reported complete in the 2021 to 2022 ILR</li> </ul> <p>The record is not an update to a learning aim, which would otherwise have been an overdue planned break, counted in the 2021 to 2022 hybrid end year.</p> <p>This applies only to 2021 to 2022 and previous years.</p>
<p>Component aims that learners could not complete as they progressed to further learning</p>	<p>Traineeship Component aims where the learner has one of the following in the Learner Destination and Progression entity:</p> <ul style="list-style-type: none"> <li>• EDU 2 (Education – Apprenticeship)</li> <li>• EDU 4 (Education – Other FE* (Full-time))</li> <li>• EDU 5 (Education – Other FE* (Part-time))</li> <li>• EMP 1 (In Paid Employment – In paid employment for 16 hours or more per week)</li> <li>• EMP 3 (In Paid Employment – Self-employed)</li> <li>• EMP 4 (In Paid Employment - Self-employed for 16 hours or more per week)</li> </ul> <p>And the Learning Planned End Date of the component aim is greater than the Outcome Start Date of the progression record.</p>
SILR exclusion	Aims in the QAR business rules that do not meet the definition of a Traineeship Programme or Traineeship Component aims.

# Processing standard files

## Process flow diagram

This flow diagram below shows how ILR information for multiple funding years is processed to produce the QARs dataset, which is the source of the information used for the QAR dashboard.



## Matching learning aims across years

Many learning aims take more than one year to complete, meaning that the same learning aims for a learner can appear on more than one ILR file.

We use various combinations of variables to ensure we match the correct records across years. Historically at learner level, we have utilised the Learner Reference Number for matching purposes. From 2022 to 2023 we will match on the Unique Learner Number (ULN) and where we are unable to do so we will match on Learner Reference Number (LRN). The matching records process will therefore utilise the UKPRN, Unique Learner Number (or where unable to do so the Learner Reference Number), Programme type and Aim reference together with the following combinations, in the following sequence.

- Learning start date, Learning planned end date, Learning actual end date
- Learning start date and Learning planned end date
- Learning start date and Learning actual end date
- Learning start date

Once we have matched the learning aim records, we discard those from previous years, leaving just the latest information for each learning aim in the QAR dataset.

Unique Learner Number is used to match all aims except in cases where:

- There is more than one distinct Learner reference number recorded with the same Unique learner number by the same provider (same UKPRN) within a year.
- There is more than one distinct LearnRefNumber\_orig recorded with the same Unique learner number by the same provider (same UKPRN) and with the same LearnAimRef, within a year.
- An aim has been submitted with the same Learner reference number and UKPRN with a ULN of 9999999999

## Processing learner reference number changes

As outlined in the section above, historically at learner level, we have utilised the Learner Reference Number assigned by providers for matching purposes. From 2022 to 2023 we will match on the Unique Learner Number (ULN) and where we are unable to do so we will match on Learner Reference Number (LRN) to match aims across years.

If, for any reason, a learner's Learner reference number changes, either within a funding year or between years, then you must record this using the Learner reference number in previous year field.

We use the information in the Learner reference number in the previous year field to change the Learner reference numbers for previous years to the latest Learner reference

number. We keep the original Learner reference number in the QAR dataset in the LearnRefNumber\_orig field.

If you do not return the Learner reference number in previous year field when there has been a change, then the process of matching aims may not work correctly. This can create 2 records in the QAR dataset for the same aim: one using the old Learner reference number and one using the new Learner reference number. Where the aim from the earlier year's ILR file does not have any achievement data, this will reduce your QAR.

If you use the Learner reference number in previous year field when there **has not** been a change in the learner's Learner reference number, then this will prevent us from correctly matching that learner's aims.

You **must** remove the data from this field between years, as detailed in the [ILR specification](#), otherwise the learners will not match correctly.

**Example:**

Learner A has a Learner reference number of 'LNA1234' in 2020 to 2021. Due to a change in the provider's management information system, Learner A has a new Learner reference number in 2021 to 2022 of 'LRA9876'. For the QAR to match correctly, you must record this as follows:

- In 2020 to 2021:
  - Learner reference number = LNA1234
  - Learner reference number in previous year is not returned
- In 2021 to 2022:
  - Learner reference number = LRA9876
  - Learner reference number in previous year = LNA1234
- In 2022 to 2023:
  - Learner reference number = LRA9876

## Identifying overdue continuing aims and planned breaks

Continuing learning aims (with a Completion status of 1 'The learner is continuing or intending to continue the learning activities leading to the learning aim') in the R14 ILR return for a funding year, that do not have a corresponding record in the following funding year, are treated as a withdrawal.

For example, if the year you submitted the record on the ILR is '2021/2022' and there is no corresponding record in 2022 to 2023 R14 ILR return:

- the hybrid end year (Hybrid\_End\_Year) is set to 2022; and
- Overall\_Leaver is set to 1; and
- Overall\_Achiever is set to 0

If you subsequently return the record in the ILR in any of the years after, we will exclude it from your QAR so that the same record is not counted against QARs in two different years.

Aims where the learner is on a planned break (aims with a Completion status of 6 'Learner has temporarily withdrawn from the aim due to an agreed break in learning), are treated as a withdrawal where:

- they do not have a corresponding restart record in the same funding year
- they do not have a corresponding restart record in the following funding year
- if the planned break was recorded in the ILR R14 return for funding year 2020 to 2021, they do not have a corresponding restart record by the R04 ILR return of the funding year 2023 to 2024.

An ILR record is a restart record if it has a Learning Delivery Funding and Monitoring Type of 'RES' with a Learning Delivery Funding and Monitoring Code of 1 (Learning aim restarted).

We match restart records to planned break records by matching on UKPRN, Learner reference number and Learning aim reference where the Original learning start date on the restart record matches the Learning start date or Original learning start date of the planned break record; this allows for situations where the planned break was itself a restart.

For example, an aim where the learner is on a planned break, that is submitted in the 2020 to 2021 ILR (YearAimSubmitted is '2020/21'), has a corresponding restart record if:

- the UKPRN, Learner reference number and Learning aim reference number on the planned break record is the same as the UKPRN, Learner reference number and Learning aim reference number on a restart record; and
- either the Learning start date or the Original learning start date on the planned break record is the same as the Original learning start date on the restart record; and
- the restart record was submitted in the 2020 to 2021, 2021 to 2022 or 2022 to 2023 ILR (YearAimSubmitted is '2020/21', '2021/22', or '2022/23')

If an aim where the learner is on a planned break that is submitted in the 2020 to 2021 ILR (YearAimSubmitted is '2020/21'), **does not have** a corresponding restart record:

- the reporting year is set to one year after the later of the expected end year or actual end year; and
- Overall\_Leaver is set to 1; and
- Overall\_Achiever is set to 0

An aim where the learner is on a planned break, that is submitted in the 2021 to 2022 ILR (YearAimSubmitted is '2021/22'), **has** a corresponding restart record if:

- the UKPRN, Learner reference number and Learning aim reference number on the planned break record is the same as the UKPRN, Learner reference number and Learning aim reference number on a restart record; and
- either the Learning start date or the Original learning start date on the planned break record is the same as the Original learning start date on the restart record; and
- the restart record was submitted in the 2021 to 2022 or 2022 to 2023 ILR, or the 2023 to 2024 R04 ILR (YearAimSubmitted is '2021/22', '2022/23' or '2023/24')

Where an aim where the learner is on a planned break that is submitted in the 2021 to 2022 ILR (YearAimSubmitted is '2021/22'), **does not have** a corresponding restart record:

- the reporting year is set to one year after the later of the expected end year or actual end year; and
- Overall\_Leaver is set to 1; and
- Overall\_Achiever is set to 0

## Qualification achievement rate calculations

We use the following fields from the QAR dataset to calculate QARs.

- **Hybrid end year (Hybrid\_End\_Year)** - This field is later of the programme actual learning end year (Actual\_End\_Year), the expected learning end year (Expected\_End\_Year), the outcome start year (Outcome\_Start\_Year), or the reporting year.
- **Overall\_Leaver** - This field indicates whether a learning aim has ended (a Learning actual end date is present) or it is an overdue continuing learning aim or an overdue continuing planned break
- **Overall\_Achiever** - This field indicates whether a learning aim has been achieved (achieved learning aims have an Outcome of 1) and moved onto positive progression within 6 months of the programme actual end date (learners with a record in the Learner Destination and Progression entity that shows positive progression)

For each funding year the QAR percentage is:

$$\frac{\text{Number of learning aims that have achieved}}{\text{Number of learning aims that have ended}} \times 100$$

For each hybrid end year (Hybrid\_End\_Year) the QAR percentage is:

$$\text{Number of learning aims where Overall_Achiever is 1}$$

---

X 100

Number of learning aims where Overall\_Leaver is 1

## Further Information

Please also use the [QAR collections page](#) that has links to the relevant QAR business rules, technical specifications, National Achievement Rate tables and guidance.

If you have any queries in relation to QAR, please contact us via our [online enquiry form](#) and select the QAR query type. Where the enquiry relates to specific learner queries, please also complete and submit the data query form which can be downloaded from the [QAR collections page](#) under the relevant academic year.



## Contents of the QAR dataset

The following reference files are used in some of the derivations:

- a) The 2022/2023 LARS data file – this file holds the learning aim data from the Learning Aims Reference System (LARS), as at the hard close of the 2022 to 2023 ILR data collection (19 October 2023)
- b) The 2022/2023 Provider Details file – this file holds providers’ details from the Provider and Organisation Information Management System (PIMS), as at 31 July 2023
- c) We obtain the lookup used to determine the delivery region and delivery local authority of a delivery location postcode from the National Statistics Postcode Lookup (UK) May 2023. This will be available to download from the Office of National Statistics website.

Data item	Description	Data values	Source (ILR)	Derivation
Age_Band	A banding of the learner’s age used for reporting. For classroom learning this is based on the age at the learner on 31 August of the year they started the learning aim in. For workplace learning this is based on the age of the learner at the start of the learning aim.	1 = 18 and under 2 = 19 or over, or whose age is not known	Derived	For aims formally identified as classroom learning aims set the value as follows: <ul style="list-style-type: none"> <li>• set to 1 if <b>Age_31AugStYr</b> is 0 to 18</li> <li>• set to 2 if <b>Age_31AugStYr</b> is 19 or greater, or unknown</li> </ul> For aims formally identified as workplace learning aims set to 2.
Age_Aim_Start	The age of the learner on the start date of the programme aim.		ILR standard files	Set to the value of the ILR derived variable <b>D_AgeAimStart</b> .
Age_31AugStYr	The age of the learner on 31 <sup>st</sup> August of the start year		ILR standard files	
Aim_Type	Aim Type code to identify type of aim		ILR standard files	1 = programme aim, 3 = component aims, 4 = core aim, 5 = other (see ILR tech spec for details)

Data item	Description	Data values	Source (ILR)	Derivation
Campus_ID	The campus identifier of the programme aim.		ILR standard files	Set to <b>Campus ID</b> .
Completion_Status	The completion status of the programme aim.		ILR standard files	Set to 4 if the <b>Completion Status</b> is 3 and the <b>Withdrawal Reason</b> is 40. Otherwise, set to <b>Completion Status</b> .
Data_Source	The source of the record on the QARs dataset.	ILR	Derived	Set to 'ILR'.
Delivery_Location_Postcode	The postcode of the delivery location.		ILR standard files	Set to <b>Delivery Location Postcode</b> .
Delivery_Region	The delivery location postcode Government office region.		Postcode lookup	Obtained from the National Statistics Postcode Lookup (UK) May 2023.
Delivery_LA	The delivery location postcode local authority district.		Postcode lookup	Obtained from the National Statistics Postcode Lookup (UK) May 2023.
Ethnicity	The learners ethnic background.		ILR standard files	Set to <b>Ethnicity</b> .
Expected_End_Year	The year that the aim is due to end in		ILR standard files	Derived from Planned_End_Date, set to 2022.5 if planned end data is after 31 <sup>st</sup> July 2023
Free_Meals	Indicates that the learner is eligible for free meals, or is eligible and receiving free meals. 19+ learners are not eligible for free meals.		Derived	If the <b>Learner Funding and Monitoring Type</b> is 'FME' and the <b>Learner Funding and Monitoring Code</b> is 1 or 2 (14-15 year old learner is eligible for free meals <b>OR</b> 16-19 year old learner is eligible for and in receipt of free meals), set to the <b>Learner Funding and Monitoring Code</b> , otherwise set to -1.

Data item	Description	Data values	Source (ILR)	Derivation
Fund_Qual_Excl	<p>Indicates that the learner has withdrawn from a learning aim before the qualifying number of days for funding has been met.</p> <p><b>(The qualifying period for funding aims with a planned duration of less than 14 days is 1 day. Fund_Qual_Excl is always set to 0 for aims with a planned duration of less than 14 days.)</b></p> <p>This does not apply to trailblazer pilot standards.</p>	0 or 1	Derived	<p><b>The planned duration of the aim, in days, is the difference between the Learning Start Date and the Learning Planned End Date.</b></p> <p><b>The actual duration of the aim, in days is the difference between the Learning Start Date and the Learning Actual End Date.</b></p> <p><b>Set to 1 if the Programme Type is not 25, or the Programme Type is 25 and the Funding Model is not 81; and</b></p> <ul style="list-style-type: none"> <li>• the planned duration is 168 days or more, the actual duration is less than 42 days and the <b>Completion Status</b> is 3 (Withdrawn); or</li> <li>• the planned duration is between 14 and 167 days, the actual duration is less than 14 days and the <b>Completion Status</b> is 3 (Withdrawn)</li> </ul> <p><b>And</b></p> <ul style="list-style-type: none"> <li>• the <b>Restart Indicator</b> is 0 (Not a Restart); or</li> <li>• the <b>Restart Indicator</b> is 1 (Restart) and <ul style="list-style-type: none"> <li>o the original <b>UKPRN</b> does not equal the new <b>UKPRN</b></li> <li>o the original <b>Learning Actual End Date</b> is less than the new <b>Learning Start Date</b></li> <li>o we can find an traineeship on the same <b>ULN</b> at the original <b>UKPRN</b></li> </ul> </li> </ul> <p><b>Otherwise set to 0.</b></p>
High_Needs_Students	Indicates that the learner is a high needs student in receipt of element 3	0 or 1	ILR standard files	Set to <b>L_HNS</b>

Data item	Description	Data values	Source (ILR)	Derivation
	'top-up' funding from the local authority			
JSA_ESA_UC_Excl	Indicates that the learning aim is for an unemployed learner claiming Universal Credit, Jobseeker's Allowance (JSA) or Employment and Support Allowance (ESA) in the work-related activity group (WRAG) who cannot continue their learning through to completion because they have started working. Aims for these learners are not included in QAR.	0 or 1	Derived	
L_PriorPcode	The learners home postcode.		ILR standard files	Set to <b>L_PriorPcode</b> (Postcode prior to enrolment)
L_PriorPcode_GOR	The learners home postcode Government office region.		Postcode lookup	Obtained from the National Statistics Postcode Lookup (UK) May 2023.
L_PriorPcode_LocalAuthority	The learners home postcode local authority district.		Postcode lookup	Obtained from the National Statistics Postcode Lookup (UK) May 2023.
LearnActEndDate	The learning actual end date (DDMMYYYY).		ILR standard files	Set to <b>Learning Actual End Date</b> .
LearnAimRef	The learning aim reference.		ILR standard files	Set to <b>Learning Aim Reference</b> .
LearnAimRefTitle	Learning aim description		LARS data	Set to <b>LearnAimRefTitle</b> for the learning aim, from the LARS data file.

Data item	Description	Data values	Source (ILR)	Derivation
LearnAimRefType	Code used by the Learner Aims Reference System to assign learning aims to certain listed types of learning aim (for example, NVQs and GNVQs).		LARS data	Set to <b>LearnAimRefType</b> for the learning aim, from the LARS data file.
LearnPlanEndDate	The learning planned end date (DDMMYYYY).		ILR standard files	Set to <b>Learning Planned End Date</b> .
LearnRefNumber	The learner reference number.		ILR standard files	Set to <b>Learner Reference Number</b> .
LearnStartDate	The learning start date (DDMMYYYY).		ILR standard files	Set to <b>Learning Start Date</b> .
LLDDHealthProb	Indicates whether the learner considers that they have a learning difficulty, disability, or health problem.		ILR standard files	Set to <b>LLDD and Health Problem</b> .
Not_Funded_Excl	Indicates that the learning aim is non-funded (not funded or financed by an advanced learner loan). Non-funded aims are not included in QAR.	0 or 1	Derived	Set to 0 if <b>D_FEFund</b> is 1 (ESFA formula funded), 2 (ESFA non formula funding) or 3 (No ESFA funding financed by Advanced Learner Loan) and <b>Fund_Qual_Excl</b> is 0, and <ul style="list-style-type: none"> <li>• <b>ProgType</b> is 24, and <b>AimType</b> is not 3 (Component learning aim); or</li> <li>• <b>ProgType</b> is 24, the <b>AimType</b> is 3, and <b>D_TrainAimType</b> from ILR standard files is not 'Work Placement'; or</li> <li>• <b>ProgType</b> is not 24</li> </ul> Otherwise set to 1.

Data item	Description	Data values	Source (ILR)	Derivation
Orig_Learn_Start_Date	<p>The original date that the learner commenced the learning on the original aim. This is only applicable where the aim is a restart</p> <p>(DDMMYYYY)</p>		ILR standard files	
Outcome	The learning outcome of the programme aim.		ILR standard files	Set to <b>Outcome</b> .
Outcome_Code	The type of destination or progression outcome being recorded.	<p>NA = -1 Not Applicable</p> <p>EDU = 2 Apprenticeship</p> <p>EDU = 4 Other FE* (Full-time)</p> <p>EDU = 5 Other FE* (Part-time)</p> <p>EMP = 1 In paid employment for 16 hours or more per week</p> <p>EMP = 4 Self-employed for 16 hours or more per week</p>	ILR standard files	Set to <b>Outcome_Code</b>

Data item	Description	Data values	Source (ILR)	Derivation
Outcome_Start_Date	The date that the learner commenced the destination or progression outcome recorded. (DDMMYYYY)		ILR standard files	Set to <b>Outcome_Start_Date</b>
Outcome_Start_Year	The year that the learner commenced the destination or progression outcome recorded. (YYYY)		Derived from Outcome_Start_Date	Set to <b>Outcome_Start_Year</b>
Outcome_Type	The type of destination or progression outcome being recorded.		EDU = Education EMP = In Paid Employment NA = Not Applicable	Set to <b>Outcome_Type</b>
Overdue_Continuing_Aim	Indicates whether the aim is an overdue continuing aim.	0 or 1	Derived	Set to 1 if the aim is an overdue continuing learning aim (as identified in section <a href="#">Identifying overdue continuing aims and planned breaks</a> ), otherwise set to 0.
Overdue_Planned_Break	Indicates whether the aim is an overdue planned break.	0 or 1	Derived	Set to 1 if the aim is an overdue planned break (as identified in section <a href="#">Identifying overdue continuing aims and planned breaks</a> ), otherwise set to 0.
Overall_Achiever	For the overall QAR measure, this indicates whether the aim has been achieved.	0 or 1	Derived	Set to 1 if: <ul style="list-style-type: none"> <li>if outcome start date is within 6 months of learning actual end date; and Outcome_Code is valid</li> <li>the <b>Achievement Date</b> is not later than 31 July 2023 (where returned on the ILR for learners on</li> </ul>

Data item	Description	Data values	Source (ILR)	Derivation
				<p><b>Programme Type</b> of 24 and a <b>Funding Model</b> of 36); or</p> <ul style="list-style-type: none"> <li>the <b>Learning Actual End Date</b> is not later than 31 July 2023 (for all other records that do not meet the above criteria)</li> </ul> <p>Otherwise set to 0.</p>
Actual_End_Year	The actual end year of the programme aim  (20__).		Derived	<p>Set to the first calendar year of the funding period the <b>Learning Actual End Date</b> falls in.</p> <p>(For example, if the <b>Learning Actual End Date</b> falls in the 2022 to 2023 funding year, <b>Actual_End_Year</b> has the value of 2022)</p>
Overall_Leaver	For the overall QAR measure, this indicates whether the record should be counted towards the overall QAR.	0 or 1	Derived	<p>Set to 1 if:</p> <ul style="list-style-type: none"> <li>(<b>Learning Actual End Date</b> is present; and the <b>Learning Actual End Date</b> is no later than 31 July 2023); or</li> <li>(<b>Achievement Date</b> is present; and the <b>Achievement Date</b> is no later than 31 July 2023 – where returned on the ILR for learners on <b>Programme Type</b> of 24 and a <b>Funding Model</b> of 36); or</li> <li><b>Overdue_Continuing_Aim</b> = 1; or</li> <li><b>Overdue_Planned_Break</b> = 1</li> </ul> <p>Otherwise set to 0.</p>
Expected_End_Year	The expected end year of the programme aim (20__).		Derived	<p>Set to the value of the first calendar year of the funding period the <b>Learning Planned End Date</b> falls in.</p>



Data item	Description	Data values	Source (ILR)	Derivation
				(For example, if the <b>Learning Planned End Date</b> falls in the 2022 to 2023 funding year, <b>Expected_End_Year</b> has the value of 2022)
Hybrid_End_Year	The hybrid end year of the programme aim  (20__).		Derived	Set to: <ul style="list-style-type: none"> <li>• the achievement year (<b>Outcome_Start_Year</b>); or</li> <li>• the actual learning end year (<b>Actual_End_Year</b>); or</li> <li>• the expected learning end year (<b>Expected_End_Year</b>);</li> <li>• the reporting year</li> </ul> whichever is higher.
Start_Year	The start year of the programme aim (20__).		Derived	Set to the value of the first calendar year of the funding period the <b>Learning Start Date</b> falls in.  (For example, if the <b>Learning Start Date</b> falls in the 2022 to 2023 funding year, <b>Start_Year</b> is set to 2022)
Plan_Break_Overall_Excl	For the overall QAR measure, this indicates that the traineeship aim is on a planned break. Planned break aims are excluded from QAR.	0 or 1	Derived	Set to 1 if: <ul style="list-style-type: none"> <li>• Completion_Status is 6 (break in learning);</li> <li>• <b>Overdue_Plan_Break</b> = 0; and</li> <li>• the <b>Learning Actual End Date</b> is no later than 31 July 2023</li> </ul> Otherwise set to 0.
PrimaryLLDD	The primary learner disability, learning difficulty or and heath problem of the learner.		ILR standard files	Set to <b>LLDDCat</b> where <b>PrimaryLLDD</b> is 1.

Data item	Description	Data values	Source (ILR)	Derivation
PriorAttain	The learner's prior attainment level.		ILR standard files	Set to <b>Prior Attainment</b> .
Provision_Type	Identified as traineeship aim	Traineeships	Derived	Set to 'Traineeships'.
Restart_Indicator	Indicates whether the learner restarted the traineeship programme.	0 or 1	ILR standard files	Set to <b>D_Restart</b> .
QAR_Status_Overall	Indicates whether or not the record is included in the provider's overall QAR calculations.	QAR Inclusions QAR Exclusions	Derived	Set to 'QAR Exclusions' if the aim is not included in overall QAR calculations.  Otherwise set to 'QAR Inclusions'.  For most excluded aims, a specific exclusion flag will also be set.
SectorSubjectAreaTier1	Sector subject area – the broad (tier 1) classification of the subject of the learning aim.		LARS data	Set to <b>SectorSubjectAreaTier1</b> for the learning aim, from the LARS data file.
SectorSubjectAreaTier2	The more specialised classification (tier 2) of the subject of the learning aim.		LARS data	Set to <b>SectorSubjectAreaTier2</b> for the learning aim, from the LARS data file.
Sex	The learners sex.		ILR standard files	Set to <b>Sex</b> .
Subcontractor_Name	The subcontractor's name.		ILR 2022 to 2023 provider details file	The name of the subcontracting provider, from the ILR 2022 to 2023 provider details file.

Data item	Description	Data values	Source (ILR)	Derivation
Subcontractor_UKPRN	The UKPRN of the partner provider that delivered the learning aim..		Derived	Set to the <b>Subcontracted or Partnership UKPRN</b> .
Software_Supplier_Aim_ID	The software supplier's aim identifier of the aim.		ILR standard files	Set to <b>SWSupAimID</b> .
Traineeship_Aim_Type	Identifies the aim type when programme type is '24'		ILR standard files	-1 = Not applicable 1 = Programme aim 2 = Work Placement 3 = Work Preparation 4 = English 5 = Maths 6 = Flexible content

Data item	Description	Data values	Source (ILR)	Derivation
Transfer_Overall_Excl	For the overall QAR measure, this indicates that the learner has transferred to another learning aim within the same provider. Transfer aims are not included in QAR.	0 or 1	Derived	<p>Set to 1 if:</p> <ul style="list-style-type: none"> <li>(Completion_Status is 3 (The learner has withdrawn from the learning activities leading to the learning aim), the Withdrawal_Reason is 40 (Learner has transferred to a new learning aim with the same provider) and a later record exists with a <b>Learning Start Date</b> no more than 120 days after the <b>Learning Actual End Date</b> of the aim with a matching <b>ULN</b> and <b>UKPRN</b>),</li> <li>or (Completion_Status is 3 and <b>Withdrawal Reason</b> is 7 or 41),</li> <li>or (<b>WithdrawalReason</b> is 47 and an Education and Training aim exists with a <b>Learning Start Date</b> no more than 30 days after the <b>Learning Actual End Date</b> of the original aim matching <b>ULN</b> and a different <b>UKPRN</b>)</li> </ul> <p>); and</p> <ul style="list-style-type: none"> <li>the <b>Learning Actual End Date</b> is no later than 31 July 2023</li> </ul> <p>Otherwise set to 0.</p>
UKPRN	The UK provider reference number (UKPRN).		ILR standard files	Set to <b>UK Provider Reference Number</b> .

Data item	Description	Data values	Source (ILR)	Derivation
UKPRN_orig	The UKPRN of the programme aim before the college merger process was applied to a provider's data.		Derived	Further detail on college structural change can be found in the QAR business rules
ULN	Unique learner number.		ILR standard files	Set to <b>Unique Learner Number</b> .
Withdrawal_Reason	The reason learning ended.		ILR standard files	Set to <b>Withdrawal Reason</b> .
Work_Exp_Excl	Indicates that the learning aim is a work experience or work placement aim. Work experience and work placement aims are not included in QAR.	0 or 1	Derived	Set to 1 if the <b>Learning Aim Reference</b> is 'Z0007834' to 'Z0007838' or 'ZWRKX001' to 'ZWRKX009'. Otherwise set to 0.
Year	The current funding year for the QARs dataset.	2022/23	Derived	Set to '2022/23'.
YearAimSubmitted	The funding year which the aim was submitted in.		Derived	Set to:  <ul style="list-style-type: none"> <li>• '2018/19' if from the 2018 to 2019 ILR</li> <li>• '2019/20' if from the 2019 to 2020 ILR</li> <li>• '2020/21' if from the 2020 to 2021 ILR</li> <li>• '2021/22' if from the 2021 to 2022 ILR</li> <li>• '2022/23' if from the 2022 to 2023 ILR</li> <li>• '2023/24' if from the 2023 to 2024 ILR</li> </ul>

Data item	Description	Data values	Source (ILR)	Derivation
Traineeship_Type	Specifies whether the aim is a component aim or programme aim	'Traineeship Programme' or 'Traineeship Component'	Derived	Set to Traineeship when Prog Type is 24, where the aim is a traineeship programme aim when the Aim Type is 1, otherwise the aim is a traineeship component aim.

# Calculating the hybrid end year field in the QAR dataset

To understand the logic that hybrid end year uses, it is important to highlight the key QAR derived variables that we use to calculate the hybrid end year, and then how we use these in the calculation. The following examples relate to the 2022 to 2023 QAR data set and we refer to this as the current QAR.

The key derived variables are:

- Programme Actual End Year – this is the same as LearnActEndDate in the ILR standard files
- Outcome Start Year – this is the same as OutStartDate in the Learner Destination and Progression entity in the ILR standard files
- Planned End Year – this is the same as LearnPlanEndDate in the ILR standard files
- Reporting Year – this refers to the academic year you submitted the learning aim to us. If the academic year is after the current QAR year, then we set this variable to 2022.5 (for example, if you report the learning aim in 2023 to 2024)
- Overdue Continuing Aim
- Overdue Planned Break
- Year First Reported Completed – this refers to the academic year you first reported the record with a Completion status of code 2 ('Complete') or 3 ('Withdrawn'). If the academic year you first reported the record with a Completion status of code 2 or 3 is after the current QAR year, then we set this variable to 2022.5 (for example, if you report the learning aim in 2023 to 2024)

We then implement 2 steps to calculate the hybrid end year:

## Step 1

We assign all records an initial value in step 1, based on the Programme Actual End Year, Outcome Start Year and Planned End Year derived variables. The table below explains the conditions we use to set the values. If the data does not meet the first condition, then we apply the second condition. If the data does not meet the second condition, then we apply the third condition.

Condition	Outcome	Example
If the programme actual end year is unpopulated...	...we set hybrid end year to 2022.5.	
If the planned end year is greater than or equal to the programme actual end year and outcome start year...	...we set hybrid end year to equal the planned end year.	<p>The programme actual end date is 31/10/2021 and the outcome start date is 01/04/2022. The planned end date is 31/08/2022.</p> <p>The programme actual end year is 2022 and the outcome start year is 2022. The planned end year is 2023. 2023 is greater than 2022, so the hybrid end year is set to 2023.</p>
If the outcome start year is greater than or equal to the programme actual end year...	...we set hybrid end year to equal the outcome start year.	<p>The programme actual end date is 01/06/2022. The outcome start date is 31/08/2022.</p> <p>The programme actual end year is 2022. The outcome start year is 2023.</p> <p>2023 is greater than 2022, so the hybrid end year is set to 2023.</p>
If the programme actual end date is between February and July, and there is no positive outcome within 6 months...	...we set hybrid end year to the equal following year.	<p>The programme actual end date is 01/05/2022. There is no positive outcome between the actual end date and 01/11/2022.</p> <p>The programme actual end year is 2022. As there is no positive outcome before 2023, the hybrid end year is set to 2023.</p>
Else...	...we set hybrid end year to equal the programme actual end year.	



## Step 2

We use the output from step 1 for step 2, when we account for the other derived variables.

Condition	Outcome	Example
If the record is marked as an overdue continuing aim...	...we set the hybrid end year to the maximum value recorded in the programme actual end year, outcome start year, planned end year and reporting year derived variables.	We mark the record as an overdue continuing aim, the reporting year is 2021, the actual end years are unpopulated and the planned end year is 2023.  The hybrid end year is set to 2023.
If the record is marked as an overdue planned break and the hybrid end year from step 1 is after the current QAR year...	...we set the hybrid end year to 2022.5.	
If the record is marked as an overdue planned break and the hybrid end year from step 1 is <b>not</b> after the current QAR year...	...we set the hybrid end year to the hybrid end year from step 1 plus one year.	The record is marked as an overdue planned break, the planned end year is 2021 and the actual end year is 2020.  The hybrid end year from step 1 is 2021, the hybrid end year in step 2 is set to 2021 plus one year, so the hybrid end year is set to 2022.
If the year first reported completed is after the hybrid end year from step 1...	...we set the hybrid end year to equal the first year reported complete.	The planned end year is 2021, the actual end year is 2020, the year first reported complete is 2022.  The hybrid end year from step 1 is 2021, the year first reported complete is after this, so the hybrid end year is set to 2022.
Else...	...hybrid end year is set to the value from step 1.	



Department  
for Education

© Crown copyright 2023

This publication is licensed under the terms of the Open Government Licence v3.0 except where otherwise stated. To view this licence, visit [nationalarchives.gov.uk/doc/open-government-licence/version/3](https://nationalarchives.gov.uk/doc/open-government-licence/version/3).

Where we have identified any third-party copyright information you will need to obtain permission from the copyright holders concerned.

About this publication:

enquiries [www.education.gov.uk/contactus](https://www.education.gov.uk/contactus)

download [www.gov.uk/government/publications](https://www.gov.uk/government/publications)



Follow us on Twitter:  
[@educationgovuk](https://twitter.com/educationgovuk)



Like us on Facebook:  
[facebook.com/educationgovuk](https://facebook.com/educationgovuk)