

Department of Health

Personal Social Services

Local Authority Statistics

**Outcome Indicators for  
Looked After Children**

**Year Ending 30 September 2000**

**England**

**Crown Copyright 2001**

# CONTENTS

Summary

Commentary

Technical notes and Further enquiries

Estimates for missing data

England tables

List

England tables

Local authority tables

List

Local authority tables

Appendices

A: OC2 return and guidance notes

B: List of local authority social services publications

## **SUMMARY**

1. At 30 September 2000 there were 42,200 children looked after by English local authorities who had been looked after continuously for at least a year.
2. 33,100 of these children were of school age and of these 26% had SEN statements, 12% missed at least 25 days of school, and 1.5% received a permanent exclusion.
3. On average 47% of those looked after children in the appropriate age group achieved level 2 at Key Stage 1, 36% level 4 at Key Stage 2 and 19% level 5 at Key Stage 3. The comparable percentages for all children were 82%, 76% and 62% respectively.
4. In school year 11, 49% of looked after children obtained at least one GCSE or GNVQ compared with 94% of all school children. 7% obtained at least 5 GCSE's at grades A\*- C compared with 49% of all children.
5. At the end of school year 11, 52% remained in full-time education compared to 71% of all school-leavers. 25% were unemployed the September after leaving school.
6. For 69% of these looked after children immunisations were up to date, 63% had a dental check, and 65% had an annual health assessment.
7. 11% of these looked after children aged 10 or over, were cautioned or convicted for an offence during the year, three times the rate for all children of this age.

# COMMENTARY

## Introduction

1. In September 1999 the Government established 11 objectives for children's social services in England. One of these is 'to ensure that children looked after gain the maximum life chance benefits from educational opportunities, health care and social care'.
2. In order to collect the data needed to monitor progress towards this objective the Department of Health introduced three new statistical collections. One of these (OC2) covers a range of outcome indicators for looked-after children in England. This publication presents the first results of this collection for the year ending 30 September 2000. The figures presented provide the baseline for assessing future trends at national and local authority level. They include the first figures for Personal Social Services Performance Assessment Framework (PAF) indicators C18, C19 and C24, and Quality Protects (QP) performance indicators QP7, QP8 and QP9.
3. Figures from another new collection relating to the objective outlined in para 1, the OC1 collection<sup>1</sup>, were published in October 2000. This data set focussed on the educational qualifications of care-leavers, at age 16 or over, and showed that 30% of young people left care with 1 or more GCSE's at grade A\*- G and 4% left care with 5 or more GCSE's at grade A\*- C.

---

<sup>1</sup> Educational qualifications of care leavers, year ending 31 March 2000: England, October 2000; Department of Health

## Data Quality

4. This is the first time that the Department of Health has asked social services departments to supply this information. Some local authorities found it difficult to obtain some of the information requested about all their looked-after children. As a result they may have under-recorded the healthcare or educational status of some of these children and young people. Data quality and response rates are expected to improve in future years. (See also the Technical Notes on page 7).
5. In addition, in some local authorities the number of looked-after children in at least some of the categories on the OC2 return was relatively small; caution is required when considering these figures as they are more affected by chance variation than figures based on larger numbers of children.

## Coverage

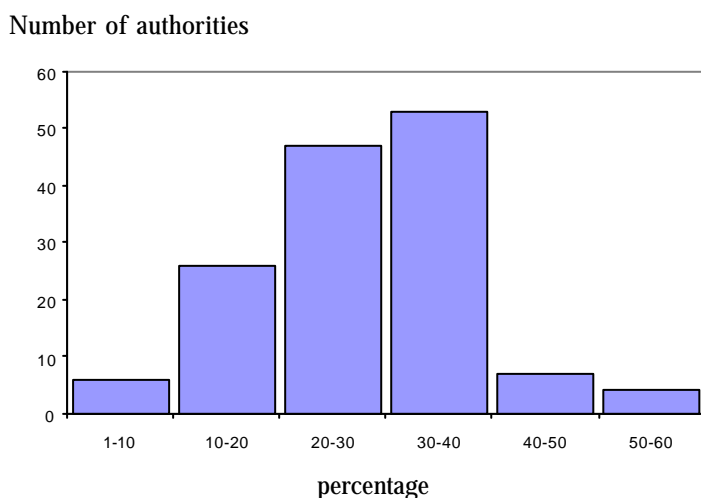
6. The OC2 collection covers all children and young people in England who had been looked after continuously for at least one year at 30 September 2000. These figures do not include children looked after under an agreed series of short-term placements during that period. It therefore differs from the OC1 collection by focussing on those looked-after children whose performance and experience local authorities have had most opportunity to influence.
7. 42,200 children looked after at 30 September 2000 had been looked after for at least one year. This represents

approximately 70% of all looked-after children at that date.

### General Education (table B and table 1)

8. 33,100 of the children looked after continuously for a least one year were of school age.
9. It is estimated that of these, 8,600 (26%) during the 1999/2000 school year held statements of special educational needs (stage 5 in the code of practice). Compared to national figures for all children, looked-after children are nine times more likely to hold a statement of special educational needs: 3% of all children hold a statement of SEN. Figure 1 shows the variation in the proportion of children looked after with SEN statements. As can be seen, for two-thirds of local authorities the proportion of looked-after children with special educational needs is between 20% and 40%. The total range is between 1% and 61%, the only authority submitting a figure of zero being Isles of Scilly who had no children looked after continuously for the year.

**Figure 1: Percentage of children looked after for at least one year holding a statement of special educational needs**

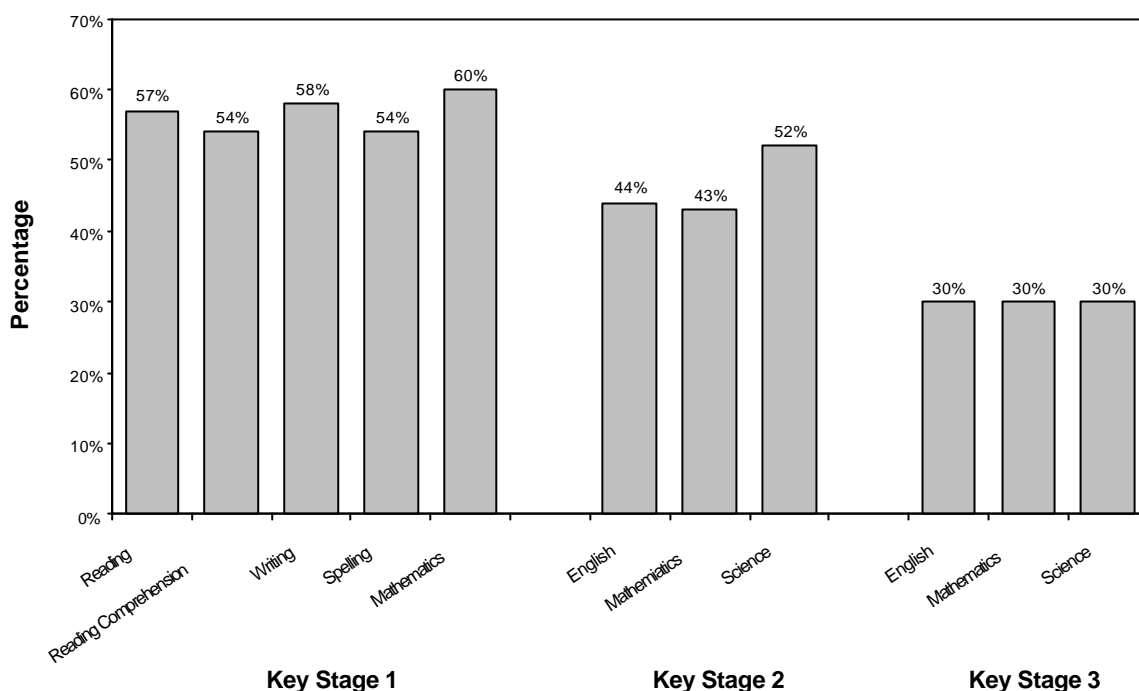


10. Looked-after children also appear more likely to receive a permanent exclusion from school. 500 of the 33,100 looked-after children of school age had been permanently excluded during the 1999/2000 school year, a percentage of 1.5% (Quality Protects indicator QP9). This compares with 0.14% of all children in the previous school year (tables on the DH website will be updated when 1999/2000 figures for all children become available).
11. For the 1999/2000 academic year, 12% of children looked after continuously throughout the year missed 25 days or more of school for any reason. This represents Performance Assessment Framework indicator C24. There are no equivalent figures for children in the whole school population.

### Key Stage and GCSE results (tables C & D, and tables 2, 3, 4 & 5)

12. The performance of those children looked after continuously for a year in the tasks and tests at the end of the three Key Stages is shown in Table C. Overall 47% reached the target level 2 at Key Stage 1, 36% reached level 4 at Key Stage 2 and 19% reached level 5 at Key Stage 3.
13. It can be seen that the academic performance of looked-after children worsens for older children. This lower performance with age is also apparent in the national school population, with average percentages at Key Stages 1, 2 and 3 for 1999/2000 at 82%, 76% and 62% respectively.
14. Figure 2 shows the percentage of looked-after children attaining the target level at each Key Stage test, as a proportion of the percentage of all children attaining the target level for the

**Figure 2: The Proportion of looked-after children attaining the target level of each of the Key Stage tasks and tests, shown as a percentage of the proportion of all children attaining the target level**

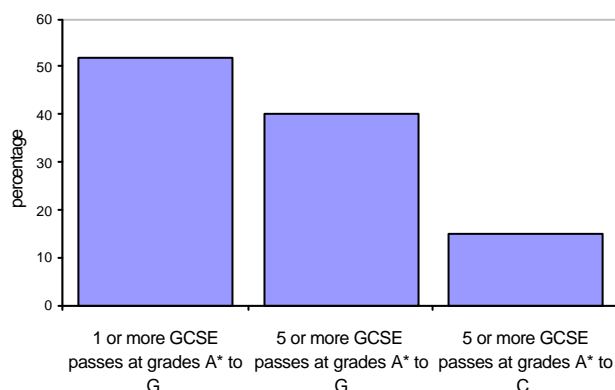


1999/2000 school year. It can be seen from figure 2 and table C that the performance of looked-after children achieving the target level for Key Stage 1 is between 54% and 60%. For Key Stage 2, the performance of looked-after children drops to between 43% and 52% of that of all children, and at Key Stage 3, the attainment of looked-after children is only 30% of that of the total school population. These percentages represent the components of the Quality Protects indicator QP7.

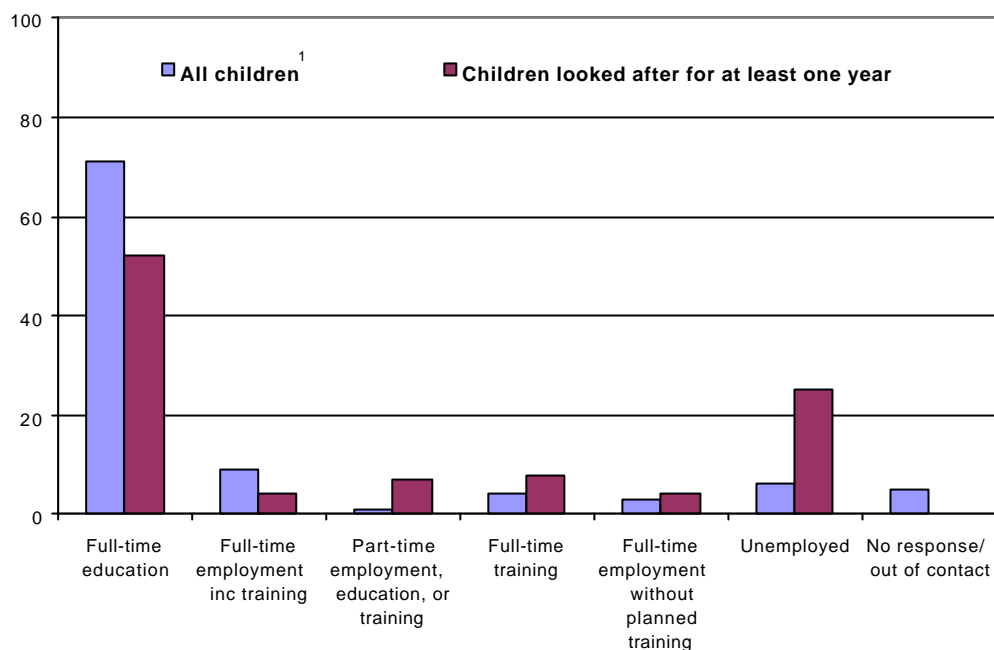
15. Of the children looked after continuously throughout Year 11, 53.5% sat at least one GCSE/GNVQ examination, and 49.2% obtained at least one GCSE at grade A\* - G or a GNVQ. This compares with 94.4% of all children. 35.5% of children looked after during the year achieved 5 or more GCSE passes at grades A\* - G, compared to 88.9% of all children.

Only 7.3% of looked-after children attained 5 GCSE passes at grades A\*-C, compared with 49.2% of all children. The figures reported here for looked-after children are slightly higher than those reported for all care leavers in the OC1 collection (see para 3). Further

**Figure 3: The proportion of looked-after children obtaining GCSE passes shown as the percentage of the proportion of all children obtaining GCSE's**



**Figure 4: The position of looked-after children at 30 September following the completion of compulsory schooling, compared with all children at the same stage**



<sup>1</sup> Source: The Careers Service Annual Activity Survey 2000

analysis of the OC1 results showed that on average care leavers with a longer continuous history of care had better examination results than those who had entered care relatively recently.<sup>2</sup>

16. Figure 3 shows GCSE attainments of looked-after children as a proportion of the attainments of all children. Although there is a large difference between the performance of looked-after children and all children at each set of Key Stage tasks and tests and in general GCSE attainment, this difference is at its greatest when considering those children obtaining the higher grades at GCSE; five passes between grades A\*- C.

### **Education and employment at age 16 (table E and table 6)**

17. Information was collected on the position of those looked-after children who finished compulsory schooling

during the 1999/2000 school year. 52.2% of children looked-after for at least a year were in full-time education in the September following the completion of Year 11. 8.2% were in full-time training, 8.2% in full-time employment and 6.5% in part-time employment, education, or training. 24.9% of these young people were unemployed at 30 September; for 2% this was due to ill-health or disability.

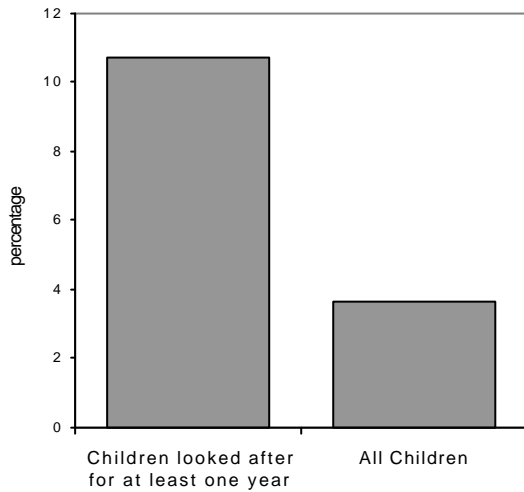
18. Figure 4 illustrates the position of looked-after teenagers on leaving school as compared to all children. Fewer looked-after children remained in full-time education than in the whole population, whereas more looked-after children were unemployed.

<sup>2</sup> published at [www.doh.gsi.gov.uk/public/stats3.htm](http://www.doh.gsi.gov.uk/public/stats3.htm)

**Cautions and convictions (table G and table 7)**

19. As can be seen from table G and figure 5, looked-after children of the age of criminal responsibility are three times more likely to be cautioned or convicted of an offence than others. 10.8% of children looked after for a year or more who were aged 10 or over had been cautioned or convicted during the year.

**Figure 5: The percentage of looked-after children and all children, aged 10 or over, who received a caution or conviction during the year**



This compares with a figure of 3.6% for all children. The ratio of these two percentages represents PAF indicator C18.

**Health (table F and tables 8 & 9)**

20. Of the 42,200 children looked after continuously during the entire year 27,400 (65.1%) had their annual health assessment and 26,800 (63.5%) had their teeth checked by a dentist during the year.

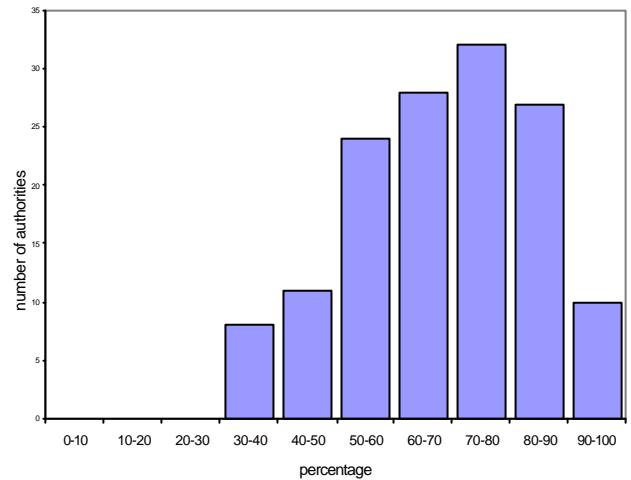
21. It must be borne in mind when considering these figures that children have a right to refuse a health assessment or dental check (and many do). Additionally, young babies with few or no teeth are not required to see a

dentist, and thus a figure of 100% is unachievable for this item.

22. Two thirds (68.6%) of children looked after continually throughout the year were up to date for their routine immunisations. Please note, this figure should also be interpreted with caution. Children may enter care with their immunisations behind schedule, or unknown as in the case of unaccompanied asylum seekers, and it is not always possible for a local authority to 'catch up' with immunisations.

23. The combination of these percentages gives a value of 66% for PAF indicator C19.

**Figure 6: The combination of the percentages of children looked after for at least a year whose immunisations were up to date, who had a dental check and who had an annual health assessment**



24. In addition, 5,300 (71.6%) of children under age 5 who had been looked after for at least a year had their development assessments up to date.

Production team:  
Amanda Charles  
Farida Ebrahim

Statistics Division  
Department of Health  
June 2001



# TECHNICAL NOTES

## Introduction of the OC2 collection

25. OC2 is a new statistical collection, developed by the Department of Health since 1998. Following a pilot collection, local authorities in England were informed of the final details in November 1998. A copy of the OC2 form is reproduced at Appendix A. Because this is the first year of the collection, some technical problems and gaps in data are to be expected; these are described below. The reader must bear in mind that some figures in the tables which follow are estimates, based on partial data, and in some cases, where small numbers are involved, chance variation may have influenced the estimates. The figures presented in this publication should therefore be treated with caution.

## Coverage

26. The data collected covers young people looked after at 30 September 2000 in England who had been looked after continuously for at least one year. A 'year' for this purpose is defined as the period from 1 October to the following September 30 inclusive. This is a departure from the Department's other collections of children's personal social services data, which use a 'year' based on the period ending 31 March, and was designed to accommodate the school year. Some young people covered by the OC2 will have attended schools outside the boundaries of their home local authority social services department.

## Missing data for 1999/2000

### No OC2 returns received

27. Data was received from 147 of the 150 local authorities. No data was received from Staffordshire, Kent or Lambeth. Estimates for these authorities were obtained using estimates of numbers of children looked after for at least one year from the SSDA903 collection and then applying national percentages. These estimates are included in the regional and national figures. One local authority (Isles of Scilly) had no children who had been looked after continuously for at least one year.

### Incomplete OC2 returns received

28. Incomplete returns were received from 31 authorities, and the relevant figures have therefore been shown in the tables as 'not available'. Table A2 lists these 31 LAs, and shows which data items they were unable to provide in each case. All figures presented at England and Government Office Region level include estimates for missing data based on national percentages. For Tables 1 and 5, regional figures for Merseyside and the North West are not available for all children, as DfEE combines these regions and present both as the North West.

### All items on OC2 completed, but some only partially

29. Twelve local authorities provided at least one item based on partial data only, estimates being derived by grossing up; in some cases this was

done by the authority themselves and in other cases by the Department of Health. These estimates are shown in the local authority tables, and where a figure presented has been extrapolated from partial data the authority name is marked with a †. Details of each local authority's estimates are provided on Table A1.

### **Problems reported in collection of data**

30. Some authorities reported difficulties in locating some of the information required. The collection of data about unaccompanied asylum-seeking children who were looked after appears to have presented a number of authorities with problems, particularly in the London area.
31. A further problem concerned out of borough placements. Several LAs reported that they had experienced difficulty in obtaining information on children who did not live in the local area.
32. Where an authority was unable to find the information, they reported the child as having no qualifications or not being up to date with regard to health checks. For this reason the figures for some authorities may underestimate the proportions of their looked-after children for certain items.

### **Validation checks**

33. The Department of Health subjected the data to a number of validation checks including, where possible, comparison with other collections (SSDA903). Local authorities were informed of validation failures. Many returned corrected data, although inconsistencies, often minor, remain in the figures for some LAs.

### **Caution required in interpretation**

34. Because of the incomplete nature of the data and some unresolved validation failures, the figures presented here should be treated with caution. It is possible that they may be updated during 2001 to incorporate additional data and revisions, where local authorities are able to provide these.

### **Comparison with data published by DfEE**

35. In the tables which follow, comparisons are presented with DfEE data for all children in mainstream and independent schools. The reader should bear in mind that some of the young people covered by the OC2 collection will be in young offenders institutes, pupil referral units, or special needs schools, which are not accounted for in the DfEE data.
36. For some items DfEE figures for the 1999/2000 school year are provisional, or have not yet been published. Where this is the case, the Department of Health has used the provisional figures and footnoted the relevant tables, or if these are not yet released, the Department has used figures for the 1998/99 school year which are identified using square brackets. Tables will be updated on the DH website when 1999/2000 figures become available.

### **Rounding**

37. England level figures have been rounded to the nearest hundred. Regional and LA level figures have not been rounded. Percentages may not always sum to 100 due to rounding of decimal places.

## **Symbols used in the tables**

The following conventions have been used in the tables:

- zero
- \* less than 0.5%
- .. not available
- . not applicable
- † placed against a local authority name indicates that some figures for that authority have been estimated from partial data (see following pages)
- [ ] square brackets around figures from DfEE indicate that they refer to the previous year

## **Figures on the Internet**

This publication is available, with all of the tables in a format suitable for downloading into Microsoft Excel, under the heading Social Care at:

**[www.doh.gov.uk/public.stats3.htm](http://www.doh.gov.uk/public.stats3.htm)**

## **Further Enquiries**

Further enquiries concerning the statistics contained in this report should be addressed to:

Amanda Charles  
Department of Health  
Room 451C  
Skipton House  
80 London Road  
Elephant & Castle  
SE1 6LH

Telephone: 020 7972 5710

Further copies of this report can be obtained from:

Henderson Burrows  
Department of Health  
Room 451C  
Skipton House  
80 London Road  
Elephant & Castle  
SE1 6LH

Telephone: 020 7972 5581

E-mail: [CHILDSTATS@doh.gsi.gov.uk](mailto:CHILDSTATS@doh.gsi.gov.uk)

# ESTIMATES FOR MISSING DATA

## How estimates were calculated where partial data was received

A copy of the OC2 return is provided at Appendix A, towards the back of this publication. The reader will observe that for several of the data items on the OC2 form, the first part of a question identifies the eligible group, and the subsequent questions ask for further information about that group. For example, question 2a asks the data provider to identify the number eligible for full-time schooling, and the subsequent questions in part 2 ask further questions about the group identified in 2a.

Twelve local authorities told the Department that, for one or more data items, they were only able to provide information on a proportion of the children who were identified as forming the eligible group in the first part of the question. For example:

*'Item 2d: 6 out of 297 grossed up to 8 out of 376'*

means that in item 2a the LA reported 376 children. In item 2d the LA should therefore have reported on 376 children, but told us they had only been able to collect data on 297. The Department, or in some cases the local authority themselves before submission, has then multiplied 6 pro-rata to produce an estimate of 8.

Table A1 which follows gives more details about the calculation of estimates in this manner to allow for partial data. Except where stated, the principle outlined above was followed to reach estimates. It is possible that some other LAs submitted partial data but did not inform the Department.

The following cases are exceptions to the principle described above:

Essex The authority grossed up figures from 95% of available data themselves. We believe that this was not a randomised sample.

Liverpool For items 9, 10, and 11, the authority selected a random sample of 100 and reported on those children only. We have grossed up to total of 975.

Sandwell The authority grossed up figures from 80% of available data themselves. We believe that this was not a randomised sample.

North Tyneside used a sample for items 8b and 10. We believe that this was not a randomised sample.

Somerset used a one-third sample for items 9, 10 and 11, We believe that this was not a randomised sample.

Northamptonshire used percentages from their Quality Protects Autumn Position Statement and applied these across to the OC2 group of children for items 9, 10 and 11. The position statement instead used the date of 31 August. Additionally, a sample was used to calculate items 10 and 11. We believe that this was not a randomised sample.

Wherever we have published a figure which is an estimate, the local authority's name has been marked with a †.

**Table A1 Estimates - partial data provided**

Local Authority	OC2 form item estimated	Published table affected	Details
Sheffield	2d 8 10 11	1, A 8, E 9, E 9, E	6 out of 297 grossed up to 8 out of 376 53 out of 83 grossed up to 64 out of 101 95 out of 371 grossed up to 125 out of 490 274 out of 371 grossed up to 362 out of 490 (by Sheffield LA)
Liverpool	9, 10, 11  8a 2d	9, E  8, E 1, A	These items based on randomised sample of 100, grossed up to total of 975 17 out of 22 grossed up to 165 out of 213 91 out of 273 grossed up to 270 out of 810
Sandwell	9, 10, 11	9, E	These items grossed up from the 80% of data which was available (by Sandwell LA)
Essex	2-12	All	These items grossed up from 95% of data which was available (by Essex LA)
Islington	2d	1, A	36 out of 172 grossed up to 62 out of 299
North Tyneside	8b, 10	8, 9, E	These items extrapolated from sample data (by North Tyneside LA)
Croydon	2d 8a 9 10 11	1, A 8, E 9, E 9, E 9, E	12 out of 86 grossed up to 24 out of 171 14 out of 14 grossed up to 47 out of 47 85 out of 91 grossed up to 246 out of 263 76 out of 81 grossed up to 247 out of 263 71 out of 81 grossed up to 231 out of 263
Northamptonshire	9, 10, 11  10, 11	9, E  9, E	% rates given on QP Autumn Position Statement applied to children looked after for one year or more at 30 Sept. Additionally, these items are also extrapolated from sample data (by Northamptonshire LA)
Rotherham	9 10 11	9, E 9, E 9, E	141 out of 228 grossed up to 161 out of 263 180 out of 247 grossed up to 192 out of 263 164 out of 235 grossed up to 184 out of 263
Ealing	2b 2d 3  4  5  6	1, A 1, A 2, B  3, B  4, B  5, C	42 out of 123 grossed up to 96 out of 282 3 out of 123 grossed up to 7 out of 282 4 out of 123 grossed up to 9 out of 282, 3b: 3 out of 4 grossed up to 7 out of 9 etc. 10 out of 123 grossed up to 23 out of 282, 4b: 1 out of 10 grossed up to 2 out of 23 etc. 23 out of 123 grossed up to 53 out of 282, 5b: 10 out of 23 grossed up to 23 out of 53 etc. 20 out of 123 grossed up to 46 out of 282,

	7b 9 10 11 12	7, F 9, E 9, E 9, E 6, D	6b: 8 out of 20 grossed up to 22 out of 46 etc. 28 out of 118 grossed up to 50 out of 211 63 out 183 grossed up to 112 out of 326 75 out of 183 grossed up to 134 out of 326 121 out of 183 grossed up to 216 out of 326 18 out of 123 grossed up to 41 out of 282, 12b: 7 out of 18 grossed up to 16 out of 41 etc.
Somerset	9, 10, 11	9, E	These items extrapolated from a one-third sample (by Somerset LA)
West Sussex	2a 2b 2c 2d 3 4 5 6 7a 7b 8a 8b 9 10 11 12	1, A 1, A 1, A 1, A 2, B 3, B 4, B 5, C 7, F 7, F 8, E 8, E 9, E 9, E 9, E 6, D	309 out of 369 grossed up to 397 out of 475 100 out of 277 grossed up to 143 out of 397 8 out of 293 grossed up to 11 out of 397 22 out of 191 grossed up to 46 out of 397 10 out of 376 grossed up to 11 out of 397, 3b: 9 out of 10 grossed up to 10 out of 11 etc. 24 out of 376 grossed up to 25 out of 397, 4b: 20 out of 24 grossed up to 21 out of 25 etc. 40 out of 376 grossed up to 42 out of 397, 5b: 32 out of 40 grossed up to 34 out of 42 etc. 41 out of 376 grossed up to 43 out of 397, 6b: 24 out of 41 grossed up to 25 out of 43 etc. 238 out of 369 grossed up to 306 out of 475 33 out of 219 grossed up to 36 out of 238, grossed up to 46 out of 306 56 out of 369 grossed up to 72 out of 475 28 out of 31 grossed up to 50.5 out of 56, grossed up to 65 out of 72 290 out of 350 grossed up to 394 out of 475 65 out of 289 grossed up to 107 out of 475 188 out of 240 grossed up to 372 out of 475 41 out of 376 grossed up to 43 out of 397, 12b: 26 out of 41 grossed up to 27 out of 43 etc.



## ENGLAND TABLES

- B Numbers of children looked after at 30 September 2000 who had been looked after for at least one year, and general information on education (numbers and percentages)
- C Eligibility and performance of looked after children in Key Stage tasks and tests, compared with all children, year ending 30 September 2000 (numbers and percentages)
- D GCSE performance of looked after children in Year 11 compared with all children, year ending 30 September 2000 (numbers and percentages)
- E Education and employment status at 30 September of looked after children in Year 11 in 1999/2000 school year, compared with all children (numbers and percentages)
- F Health care of looked after children, year ending 30 September 2000 (numbers and percentages)
- G Offending by looked after children, year ending 30 September 2000 (numbers and percentages)



## LOCAL AUTHORITY TABLES

- 1 Numbers of children looked after for at least one year, and general information on education, year ending 30 September 2000 (numbers and percentages)
- 2 Eligibility and performance of looked after children in Key Stage 1 tasks and tests, compared with all children, year ending 30 September 2000 (numbers and percentages)
- 3 Eligibility and performance of looked after children in Key Stage 2 tasks and tests, compared with all children, year ending 30 September 2000 (numbers and percentages)
- 4 Eligibility and performance of looked after children in Key Stage 3 tasks and tests, compared with all children, year ending 30 September 2000 (numbers and percentages)
- 5 GCSE performance of looked after children in Year 11 compared with all children, year ending 30 September 2000 (numbers and percentages)
- 6 Education and employment status at 30 September of looked after children in Year 11 in 1999/2000 school year (numbers and percentages)
- 7 Offending by looked after children, year ending 30 September (numbers and percentages)
- 8 Development assessments of pre-school looked after children, year ending 30 September 2000 (numbers and percentages)
- 9 Health care of looked after children, year ending 30 September 2000 (numbers and percentages)

**Table B Numbers of children looked after at 30 Sept 2000 who had been looked after for at least one year, and general information on education**

	England			numbers of children and percentages	
	looked after children		all children <sup>1</sup>		
	number	percentage <sup>2</sup>	percentage		
Number of children looked after at 30 Sept. who had been looked after for at least one year	42,200	.	.		
and of these:					
Number eligible for full-time schooling	33,100	.	.		
and of these:					
Number with a statement of special educational needs	8,600	26.0	3.0		
Number receiving a permanent exclusion from school <sup>3</sup>	500	1.5	[0.14]		
Number who missed at least 25 days of school <sup>4,5</sup>	4,000	12.0	..		

1 source: DfEE statistical bulletins: 'Statistics of Education: Special Educational Needs in England: January 2000' and 'Statistics of Education: Permanent Exclusions from Maintained Schools in England' (DfEE figures on permanent exclusions are for the 1998/99 school year, shown in square brackets; figures for 1999/2000 will be published by the DfEE in Autumn 2001 and tables will be updated accordingly on the DH website)

2 expressed as a percentage of the number eligible for full-time schooling

3 QP Indicator 9, defined as: The percentage of children who had been looked after continuously for at least 12 months and were of school age, who were permanently excluded from school at any time during the previous school year

4 PAF Indicator C24, defined as: The percentage of children who had been looked after continuously for at least 12 months and were of school age, who missed a total of at least 25 days during the previous school year of schooling for any reason

5 figures on this basis are not collected by DfEE for all children

**Table C Eligibility and performance of looked after children in Key Stage tasks and tests, compared with all children, year ending 30 September 2000**

	England				Quality Protects Indicator 7 <sup>2</sup>
	numbers of children and percentages				
	looked after children		all children <sup>1</sup>		
	number	percentage	percentage		
<b>YEAR 2</b>					
Number eligible to sit Key Stage 1 tasks and tests	2,000	.	.	.	
Number who attained at least Level 2 <sup>3</sup> in the following:					
Reading task <sup>4</sup>	1,000	47.6	83	0.57	
Reading comprehension tests <sup>4</sup>	900	45.2		0.54	
Writing task	1,000	48.6	84	0.58	
Spelling test	800	38.2	71	0.54	
Mathematics task/test	1,100	53.8	90	0.60	
<b>YEAR 6</b>					
Number eligible to sit Key Stage 2 tasks and tests	2,700	.	.	.	
Number who attained at least Level 4 <sup>3</sup> in the following:					
English	900	32.3	74	0.44	
Mathematics	800	30.4	71	0.43	
Science	1,200	44.0	84	0.52	
<b>YEAR 9</b>					
Number eligible to sit Key Stage 3 tasks and tests	3,400	.	.	.	
Number who attained at least Level 5 <sup>3</sup> in the following:					
English	600	18.9	63	0.30	
Mathematics	700	19.4	65	0.30	
Science	600	17.9	59	0.30	

1 source: DfEE statistical first release 'National curriculum assessments of 7, 11 and 14 year olds by Local Education Authority, 2000' (please note - these figures are provisional and refer to LEA maintained schools only)

2 QP Indicator 7, defined as: The proportion of looked after children attaining the target levels or better in each of the tested subjects in the National Curriculum Assessments tests, expressed as a ratio of the proportion of all children at that stage attaining the target level or better in the authority

3 target level for age group

4 the 'all children' Key stage 1 Reading task figure is derived by DfEE from an average of children attaining level 2 or above in the reading task and pupils attaining level 3 or above in the reading comprehension test, therefore cannot be directly compared with the reading task or reading comprehension test figures for looked after children

**Table D GCSE performance of looked after children in Year 11 compared with all children, year ending 30 September 2000**

England	numbers of children and percentages			
	looked after children		all children <sup>1</sup>	Quality Protects Indicator 8 <sup>3</sup>
	number	percentage <sup>2</sup>	percentage	
Number in Year 11	3,900	.	.	.
Number who sat at least one GCSE or GNVQ <sup>4</sup>	2,100	53.5	..	.
Number who obtained at least:				
1 GCSE at grade A* to G or a GNVQ	1,900	49.2	94.4	0.52
5 GCSE's at grade A* to G	1,400	35.5	88.9	0.40
5 GCSE's at grade A* to C	300	7.3	49.2	0.15

1 source: DfEE statistical first release 'GCSE/GNVQ and GCE A/AS/Advanced GNVQ results for young people in England, 1999/2000 (Provisional)'

2 expressed as a percentage of all looked after children in Year 11

3 QP Indicator 8, defined as: The proportion of looked after children obtaining at least 5 GCSE's at grades A\*-C during the most recent school year, as a ratio of the proportion of all children in the local authority achieving these standards

4 these figures are not collected by DfEE for all children

**Table E Education and employment status at 30 September 2000 of looked after children in Year 11 in 1999/2000 school year, compared with all children**

Government Office Region		total number of children in Year 11 in 1999/2000 school year	position at 30 September 2000, shown as a percentage of the total						unemployed	
			full-time education	full-time training	full-time employment with planned training	full-time employment with no planned training	part-time employment, education, or training	a result of ill-health or disability	other reason	
<b>ENGLAND</b>	looked after	<b>3,900</b>	<b>52.2</b>	<b>8.2</b>	<b>4.0</b>	<b>4.2</b>	<b>6.5</b>	<b>2.0</b>	<b>22.9</b>	
	all children <sup>1,2</sup>	.	<b>71.3</b>	<b>4.4</b>	<b>9.2</b>	<b>2.9</b>	<b>1.1</b>	<b>6.2</b>		
<b>NORTH EAST</b>	looked after	216	48.6	6.9	8.3	1.9	8.3	2.3	23.6	
	all children <sup>1,2</sup>	.	65.7	10.6	6.5	2.5	1.7	8.5		
<b>NORTH WEST &amp; MERSEYSIDE</b>	looked after	565	44.9	9.5	4.2	4.8	5.2	1.8	29.7	
	all children <sup>1,2</sup>	.	67.7	5.6	11.1	2.9	0.9	6.9		
<b>YORKS &amp; THE HUMBER</b>	looked after	376	41.5	12.5	5.1	5.1	6.9	2.7	26.3	
	all children <sup>1,2</sup>	.	67.6	5.6	10.5	3.1	1.2	7.7		
<b>EAST MIDLANDS</b>	looked after	240	51.3	9.6	5.4	4.2	8.3	1.3	20.0	
	all children <sup>1,2</sup>	.	70.2	4.4	10.4	4.1	1.1	6.0		
<b>WEST MIDLANDS</b>	looked after	435	49.1	12.3	2.6	4.6	4.5	1.0	25.9	
	all children <sup>1,2</sup>	.	70.3	6.2	8.4	3.3	1.3	6.9		
<b>SOUTH WEST</b>	looked after	324	54.0	7.9	4.9	4.9	9.5	0.9	17.9	
	all children <sup>1,2</sup>	.	73.3	3.8	9.4	3.4	1.1	4.3		
<b>LONDON</b>	looked after	856	58.9	4.6	2.2	2.9	6.5	3.1	21.9	
	all children <sup>1,2</sup>	.	75.1	2.5	4.5	2.3	1.2	6.7		
<b>EAST</b>	looked after	346	56.9	6.9	4.0	3.8	4.3	1.7	22.3	
	all children <sup>1,2</sup>	.	73.2	2.8	10.6	2.8	1.1	5.1		
<b>SOUTH EAST</b>	looked after	484	57.7	7.4	4.0	5.8	7.3	1.6	16.3	
	all children <sup>1,2</sup>	.	75.5	1.6	9.7	2.5	0.8	4.9		

1 source: The Careers Service Annual Activity Survey 2000

2 percentages will not sum to 100, as Careers Service data has an additional category of no response/moved out of contact which is not relevant to looked after children

**Table F Health care of looked after children, year ending 30 September 2000**

England	numbers of looked after children and percentages		
	number	percentage	PAF Indicator C19 <sup>1</sup>
number of children looked after for at least one year	42,200	.	.
number whose immunisations were up to date	29,000	68.6	65.7
number who had their teeth checked by a dentist	26,800	63.5	
number who had their annual health assessment	27,400	65.1	
number of children aged 5 or younger at 30 September	7,500	.	.
number whose development assessments were up to date	5,300	71.6	.

1 PAF Indicator C19, defined as: The average of the percentages of children looked after at 30 September who had been looked after continuously for at least 12 months, and who had routine immunisations up to date, had their teeth checked by a dentist during the previous 12 months, and had an annual health assessment during the previous 12 months

**Table G Offending by looked after children, year ending 30 September 2000**

England	numbers of children and percentages			
	looked after children		all children <sup>1</sup>	PAF Indicator C18 <sup>2</sup>
	number	percentage	percentage	
number of children looked after for at least one year	42,200	.	.	.
Number of children aged 10 or older at 30 September	25,700	.	.	.
Number cautioned or convicted during the year	2,800	10.8	3.6	3.0

1 source: Home Office; figures for all children in the police force area during the 1999 calendar year

2 PAF Indicator C18, defined as: The proportion of children (aged 10 or over) who had been looked after continuously for at least 12 months, who were cautioned or convicted during the year for an offence committed whilst they were looked after, expressed as a ratio of the proportion of all children and young people convicted of or cautioned for an offence in the police force area

**Table 1 Numbers of children looked after for at least one year, and general information on education, year ending 30 September 2000**

Local Authority	number looked after for at least one year	number school age	numbers of children and percentages							
			children with a statement of SEN			children receiving a permanent exclusion from school			children who missed at least 25 days school <sup>2</sup>	
			looked after		all children <sup>1</sup>	looked after		all children <sup>1</sup>	looked after	
			number	%	%	number	QP9 % <sup>3</sup>	%	number	PAF indicator C24 % <sup>4</sup>
<b>ENGLAND</b>	<b>42,200</b>	<b>33,100</b>	<b>8,600</b>	<b>26</b>	<b>3.0</b>	<b>500</b>	<b>1.5</b>	<b>[0.1]</b>	<b>4,000</b>	<b>12</b>
<b>NORTH EAST</b>	<b>2,475</b>	<b>1,885</b>	<b>557</b>	<b>30</b>	<b>3.1</b>	<b>19</b>	<b>1.0</b>	<b>[0.1]</b>	<b>242</b>	<b>13</b>
Durham	385	250	96	38	4.0	3	1.2	[0.1]	47	19
Northumberland	210	189	64	34	3.1	1	0.5	[0.1]	..	..
Darlington	90	71	31	44	3.4	2	2.8	[0.2]	5	7
Hartlepool	79	49	9	18	2.5	-	-	[0.1]	-	-
Middlesbrough	130	110	32	29	2.9	-	-	[0.1]	18	16
Redcar & Cleveland	109	101	32	32	2.2	2	2.0	[0.1]	10	10
Stockton On Tees	154	114	27	24	3.1	1	0.9	[0.1]	9	8
Gateshead	184	155	53	34	2.5	1	0.6	[0.1]	28	18
Newcastle Upon Tyne	322	231	47	20	2.5	2	0.9	[0.2]	..	..
North Tyneside	220	181	34	19	2.9	4	2.2	[0.2]	13	7
South Tyneside	222	155	50	32	3.2	1	0.6	[0.3]	28	18
Sunderland	370	279	82	29	3.5	2	0.7	[0.1]	..	..
<b>NORTH WEST<sup>5</sup></b>	<b>5,495</b>	<b>4,272</b>	<b>1000</b>	<b>23</b>	<b>..</b>	<b>44</b>	<b>1.0</b>	<b>..</b>	<b>441</b>	<b>10</b>
Cheshire	356	284	35	12	3.1	6	2.1	[0.1]	40	14
Cumbria	251	246	27	11	3.5	1	0.4	[0.1]	..	..
Lancashire	1,063	830	238	29	4.1	9	1.1	[0.1]	106	13
Blackburn With Darwen	214	157	52	33	4.1	5	3.2	[0.1]	22	14
Blackpool	191	132	28	21	3.7	1	0.8	[0.1]	12	9
Halton	119	94	42	45	4.5	1	1.1	[0.1]	8	9
Warrington	136	100	30	30	3.0	1	1.0	[0.1]	18	18
Bolton	216	161	32	20	3.2	2	1.2	[0.2]	15	9
Bury	140	109	29	27	2.8	1	0.9	[0.2]	-	-
Manchester	990	746	128	17	2.9	4	0.5	[0.2]	85	11
Oldham	217	160	13	8	1.6	2	1.3	[0.2]	16	10
Rochdale	186	155	32	21	2.6	2	1.3	[0.1]	5	3
Salford	431	344	62	18	2.4	-	-	[0.3]	18	5
Stockport	279	224	77	34	2.5	4	1.8	[0.1]	28	10
Tameside	254	205	62	30	3.1	-	-	[0.2]	-	-
Trafford	89	75	33	44	2.2	3	4.0	[0.1]	13	17
Wigan	363	250	80	32	4.5	2	0.8	[0.1]	26	10



**Table 1 Numbers of children looked after for at least one year, and general information on education, year ending 30 September 2000**

Local Authority	number looked after for at least one year	number school age	numbers of children and percentages							
			children with a statement of SEN			children receiving a permanent exclusion from school			children who missed at least 25 days school <sup>2</sup>	
			looked after		all children <sup>1</sup>	looked after		all children <sup>1</sup>	looked after	
			number	%	%	number	QP9 % <sup>3</sup>	%	number	PAF indicator C24 % <sup>4</sup>
<b>MERSEYSIDE<sup>5</sup></b>	<b>1,849</b>	<b>1,508</b>	<b>272</b>	<b>18</b>	<b>..</b>	<b>17</b>	<b>1.1</b>	<b>..</b>	<b>354</b>	<b>23</b>
Knowsley	192	149	35	23	4.0	-	-	[0.1]	12	8
Liverpool†	975	810	106	13	2.8	11	1.4	[0.2]	270	33
Sefton	196	172	37	22	3.2	2	1.2	[0.2]	28	16
St Helens	208	167	54	32	4.6	-	-	[0.1]	15	9
Wirral	278	210	40	19	3.6	4	1.9	[0.1]	29	14
<b>YORKS &amp; THE HUMBER</b>	<b>4,895</b>	<b>3,859</b>	<b>939</b>	<b>24</b>	<b>3.1</b>	<b>88</b>	<b>2.3</b>	<b>[0.1]</b>	<b>495</b>	<b>13</b>
North Yorkshire	224	161	15	9	2.5	-	-	[0.1]	4	2
East Riding Of Yorkshire	164	108	22	20	2.5	-	-	[0.0]	6	6
Kingston Upon Hull	509	392	32	8	2.2	2	0.5	[0.1]	74	19
North East Lincolnshire	203	156	25	16	2.8	1	0.6	[0.1]	12	8
North Lincolnshire	144	116	33	28	2.8	3	2.6	[0.1]	9	8
York	87	71	22	31	2.6	-	-	[0.1]	8	11
Barnsley	256	189	70	37	3.2	5	2.6	[0.1]	39	21
Bradford	530	431	120	28	2.7	48	11.1	[0.1]	97	23
Calderdale	154	113	39	35	2.9	2	1.8	[0.1]	6	5
Doncaster	295	254	57	22	4.2	5	2.0	[0.2]	30	12
Kirklees	231	163	58	36	4.2	7	4.3	[0.1]	27	17
Leeds	1,003	858	206	24	3.5	-	-	[0.1]	114	13
Rotherham	263	186	61	33	3.8	2	1.1	[0.1]	26	14
Sheffield†	490	376	95	25	3.3	5	1.3	[0.1]	8	2
Wakefield	342	285	84	29	2.7	8	2.8	[0.1]	35	12
<b>EAST MIDLANDS</b>	<b>2,846</b>	<b>2,199</b>	<b>606</b>	<b>28</b>	<b>2.7</b>	<b>45</b>	<b>2.0</b>	<b>[0.1]</b>	<b>284</b>	<b>13</b>
Derbyshire	440	382	111	29	3.6	11	2.9	[0.1]	51	13
Leicestershire	176	132	47	36	2.8	1	0.8	[0.1]	29	22
Lincolnshire	360	278	84	30	3.1	3	1.1	[0.1]	27	10
Northamptonshire	428	331	94	28	2.8	4	1.2	[0.1]	..	..
Nottinghamshire	354	269	42	16	1.0	1	0.4	[0.1]	29	11
Derby	335	268	92	34	3.5	11	4.1	[0.2]	32	12
Leicester	317	229	81	35	4.1	7	3.1	[0.2]	31	14
Nottingham	431	306	54	18	1.5	7	2.3	[0.2]	45	15
Rutland	5	4	1	25	2.3	-	-	[0.1]	-	-

**Table 1 Numbers of children looked after for at least one year, and general information on education, year ending 30 September 2000**

Local Authority	number looked after for at least one year	number school age	numbers of children and percentages							
			children with a statement of SEN			children receiving a permanent exclusion from school			children who missed at least 25 days school <sup>2</sup>	
			looked after		all children <sup>1</sup>	looked after		all children <sup>1</sup>	looked after	
			number	%	%	number	QP9 % <sup>3</sup>	%	number	PAF indicator C24 % <sup>4</sup>
<b>WEST MIDLANDS</b>	<b>4,813</b>	<b>3,504</b>	<b>867</b>	<b>25</b>	<b>3.0</b>	<b>38</b>	<b>1.1</b>	<b>[0.2]</b>	<b>471</b>	<b>13</b>
Shropshire	129	109	34	31	3.7	-	-	[0.1]	18	17
Staffordshire	..	..	..	..	4.0	..	..	[0.1]	..	..
Warwickshire	225	177	60	34	3.0	2	1.1	[0.1]	31	18
Worcestershire	473	358	56	16	2.9	3	0.8	[0.1]	1	*
Herefordshire	158	122	30	25	3.2	2	1.6	[0.1]	26	21
Stoke-On-Trent	274	214	42	20	3.1	2	0.9	[0.4]	26	12
Telford & Wrekin	104	101	33	33	4.5	1	1.0	[0.2]	7	7
Birmingham	1,368	797	212	27	2.8	2	0.3	[0.2]	143	18
Coventry	388	301	75	25	2.6	3	1.0	[0.2]	49	16
Dudley	283	200	53	27	2.4	3	1.5	[0.1]	22	11
Sandwell	313	257	36	14	2.6	-	-	[0.2]	18	7
Solihull	114	90	28	31	1.8	3	3.3	[0.1]	18	20
Walsall	269	206	51	25	2.8	10	4.9	[0.1]	42	20
Wolverhampton	316	259	76	29	2.7	2	0.8	[0.1]	32	12
<b>SOUTH WEST</b>	<b>3,375</b>	<b>2,797</b>	<b>786</b>	<b>28</b>	<b>3.2</b>	<b>31</b>	<b>1.1</b>	<b>[0.1]</b>	<b>251</b>	<b>9</b>
Cornwall	403	316	122	39	4.4	4	1.3	[0.1]	20	6
Devon	504	436	..	..	3.6	6	1.4	[0.1]	11	3
Dorset	178	165	43	26	3.0	..	..	[0.1]	..	..
Gloucestershire	333	301	..	..	2.9	-	-	[0.1]	29	10
Isles Of Scilly	-	-	-	-	1.5	-	-	[0.4]	-	-
Somerset	211	166	44	27	2.8	6	3.6	[0.1]	11	7
Wiltshire	167	133	14	11	2.4	4	3.0	[0.1]	18	14
Bath & North East Somerset	108	95	28	29	2.4	-	-	[0.1]	1	1
Bournemouth	133	101	19	19	2.9	1	1.0	[0.1]	11	11
Bristol	437	332	103	31	4.0	5	1.5	[0.2]	45	14
North Somerset	106	74	26	35	3.2	-	-	[0.1]	5	7
Plymouth	288	259	73	28	3.5	-	-	[0.1]	39	15
Poole	103	84	27	32	3.3	1	1.2	[0.1]	8	10
South Gloucestershire	100	88	27	31	3.1	1	1.1	[0.1]	7	8
Swindon	122	102	22	22	3.2	-	-	[0.1]	9	9
Torbay	182	145	46	32	3.4	-	-	[0.1]	..	..

**Table 1 Numbers of children looked after for at least one year, and general information on education, year ending 30 September 2000**

Local Authority	number looked after for at least one year	number school age	numbers of children and percentages							
			children with a statement of SEN			children receiving a permanent exclusion from school			children who missed at least 25 days school <sup>2</sup>	
			looked after		all children <sup>1</sup>	looked after		all children <sup>1</sup>	looked after	
			number	%	%	number	QP9 % <sup>3</sup>	%	number	PAF indicator C24 % <sup>4</sup>
<b>LONDON</b>	<b>7,295</b>	<b>5,703</b>	<b>1356</b>	<b>24</b>	<b>2.9</b>	<b>111</b>	<b>1.9</b>	<b>[0.2]</b>	<b>577</b>	<b>10</b>
Camden	227	182	70	38	2.9	7	3.8	[0.1]	13	7
City Of London	2	1	1	100	0.1	-	-	[-]	-	-
Greenwich	304	229	98	43	4.1	14	6.1	[0.2]	38	17
Hackney	387	260	34	13	3.3	9	3.5	[0.1]	28	11
Hammersmith & Fulham	287	261	28	11	3.4	4	1.5	[0.3]	11	4
Islington†	388	299	62	21	3.7	-	-	[0.2]	62	21
Kensington & Chelsea	155	143	35	24	1.4	4	2.8	[0.3]	24	17
Lambeth	..	..	..	..	4.0	..	..	[0.1]	..	..
Lewisham	363	257	3	1	3.3	4	1.6	[0.2]	31	12
Southwark	501	317	54	17	3.0	1	0.3	[0.3]	36	11
Tower Hamlets	191	164	84	51	4.2	9	5.5	[0.1]	23	14
Wandsworth	257	192	50	26	3.1	3	1.6	[0.3]	23	12
Westminster	202	150	42	28	2.6	1	0.7	[0.2]	11	7
Barking & Dagenham	153	135	32	24	2.8	3	2.2	[0.1]	7	5
Barnet	167	120	40	33	2.3	-	-	[0.1]	8	7
Bexley	135	97	4	4	2.6	2	2.1	[0.2]	4	4
Brent	137	117	45	38	3.1	4	3.4	[0.2]	6	5
Bromley	193	148	58	39	3.2	10	6.8	[0.2]	21	14
Croydon†	263	171	19	11	2.0	6	3.5	[0.3]	24	14
Ealing†	326	282	96	34	2.5	-	-	[0.2]	7	2
Enfield	185	164	27	16	2.4	2	1.2	[0.2]	12	7
Haringey	256	227	37	16	2.6	2	0.9	[0.1]	..	..
Harrow	108	75	22	29	2.4	3	4.0	[0.1]	10	13
Havering	97	75	24	32	2.9	3	4.0	[0.1]	6	8
Hillingdon	212	188	34	18	3.2	5	2.7	[0.2]	7	4
Hounslow	193	159	38	24	2.9	1	0.6	[0.2]	9	6
Kingston Upon Thames	61	47	23	49	2.3	-	-	[0.1]	3	6
Merton	142	110	..	..	3.0	-	-	[0.1]	1	1
Newham	433	371	51	14	3.0	-	-	[0.1]	30	8
Redbridge	98	85	23	27	1.8	1	1.2	[0.1]	4	5
Richmond Upon Thames	62	46	16	35	2.2	-	-	[0.2]	13	28
Sutton	107	79	28	35	3.1	1	1.3	[0.1]	18	23
Waltham Forest	172	135	41	30	3.6	6	4.4	[0.2]	10	7

**Table 1 Numbers of children looked after for at least one year, and general information on education, year ending 30 September 2000**

Local Authority	number looked after for at least one year	number school age	numbers of children and percentages							
			children with a statement of SEN			children receiving a permanent exclusion from school			children who missed at least 25 days school <sup>2</sup>	
			looked after		all children <sup>1</sup>	looked after		all children <sup>1</sup>	looked after	
			number	%		number	QP9 % <sup>3</sup>		number	PAF indicator C24 % <sup>4</sup>
<b>EAST OF ENGLAND</b>	<b>3,710</b>	<b>2,962</b>	<b>880</b>	<b>30</b>	<b>2.8</b>	<b>21</b>	<b>0.7</b>	<b>[0.1]</b>	<b>359</b>	<b>12</b>
Bedfordshire	267	215	68	32	3.3	-	-	[0.1]	27	13
Cambridgeshire	301	247	96	39	3.3	-	-	[0.1]	27	11
Essex†	864	645	147	23	2.2	6	0.9	[0.1]	95	15
Hertfordshire	620	520	188	36	2.4	-	-	[0.2]	44	8
Norfolk	443	341	114	33	3.4	3	0.9	[0.1]	41	12
Suffolk	409	333	103	31	3.1	4	1.2	[0.1]	..	..
Luton	213	165	51	31	2.2	2	1.2	[0.1]	13	8
Peterborough	293	250	51	20	3.4	4	1.6	[0.1]	46	18
Southend	187	144	39	27	2.5	2	1.4	[0.2]	24	17
Thurrock	113	102	23	23	2.3	-	-	[0.2]	2	2
<b>SOUTH EAST</b>	<b>5,411</b>	<b>4,418</b>	<b>1322</b>	<b>30</b>	<b>3.1</b>	<b>76</b>	<b>1.7</b>	<b>[0.1]</b>	<b>489</b>	<b>11</b>
Buckinghamshire	248	216	76	35	2.9	-	-	[0.1]	16	7
East Sussex	345	302	29	10	3.1	1	0.3	[0.1]	57	19
Hampshire	685	589	136	23	2.4	15	2.5	[0.1]	50	8
Kent	..	..	..	..	3.5	..	..	[0.2]	..	..
Oxfordshire	339	289	95	33	2.4	8	2.8	[0.1]	22	8
Surrey	529	393	177	45	3.0	6	1.5	[0.2]	31	8
West Sussex†	475	397	143	36	3.1	11	2.8	[0.2]	46	12
Bracknell Forest	44	31	16	52	2.6	2	6.5	[0.3]	2	6
Brighton & Hove	279	223	73	33	4.1	1	0.4	[0.2]	11	5
Isle Of Wight	127	116	28	24	4.3	-	-	[0.1]	7	6
Medway Towns	260	194	68	35	3.5	7	3.6	[0.2]	20	10
Milton Keynes	225	174	68	39	3.7	6	3.4	[0.1]	26	15
Portsmouth	179	151	48	32	2.6	1	0.7	[0.2]	41	27
Reading	94	82	22	27	2.9	-	-	[0.3]	17	21
Slough	102	74	29	39	3.2	-	-	[0.1]	10	14
Southampton	287	235	38	16	2.5	-	-	[0.1]	12	5
West Berkshire	98	86	32	37	4.0	-	-	[0.1]	15	17
Windsor & Maidenhead	50	43	11	26	2.4	4	9.3	[0.1]	5	12
Wokingham	68	56	34	61	3.4	3	5.4	[0.2]	9	16

1 source: DfEE statistical bulletins: 'Statistics of Education: Special Educational Needs in England: January 2000' (Position in January 2000) and 'Statistics of Education: Permanent Exclusions from Maintained Schools in England' (Position in previous school year 1998/99; shown in square brackets. Figures for 1999/2000 will be published by DfEE in Autumn 2001 and DH website tables will be updated accordingly)

2 figures on this basis are not collected by DfEE for all children

3 QP Indicator 9, defined as: The percentage of children who had been looked after continuously for at least 12 months and were of school age, who were permanently excluded from school at any time during the previous school year

4 PAF Indicator C24, defined as: The percentage of children who had been looked after continuously for at least 12 months and were of school age, who missed a total of at least 25 days of schooling for any reason during the previous school year

5 these figures are not available for 'all children', as DfEE present figures for the North West inclusive of Merseyside

**Table 2 Eligibility and performance of looked after children in Key Stage 1 tasks and tests, compared to all children**

Local Authority	number looked after in Year 2 old enough to sit Key Stage 1 tasks and tests	percentage attaining level 2 <sup>1</sup> or above in each task or test														
		reading									writing task					
		comprehension tests			reading task			writing task			spelling test			mathematics task/test		
	looked after	all children <sup>3,4</sup>	ratio QP7 <sup>2</sup>	looked after	all children <sup>3,4</sup>	ratio QP7 <sup>2</sup>	looked after	all children <sup>3</sup>	ratio QP7 <sup>2</sup>	looked after	all children <sup>3</sup>	ratio QP7 <sup>2</sup>	looked after	all children <sup>3</sup>	ratio QP7 <sup>2</sup>	
<b>ENGLAND</b>	<b>2,000</b>	<b>45</b>	<b>83</b>	<b>0.5</b>	<b>48</b>	<b>83</b>	<b>0.6</b>	<b>49</b>	<b>84</b>	<b>0.6</b>	<b>38</b>	<b>71</b>	<b>0.5</b>	<b>54</b>	<b>90</b>	<b>0.6</b>
<b>NORTH EAST</b>	<b>138</b>	<b>41</b>	<b>84</b>	<b>0.5</b>	<b>43</b>	<b>84</b>	<b>0.5</b>	<b>41</b>	<b>86</b>	<b>0.5</b>	<b>34</b>	<b>77</b>	<b>0.4</b>	<b>45</b>	<b>90</b>	<b>0.5</b>
Durham	9	11	85	0.1	22	85	0.3	11	86	0.1	11	78	0.1	33	91	0.4
Northumberland	11	27	88	0.3	18	88	0.2	27	90	0.3	45	81	0.6	36	93	0.4
Darlington	7	71	85	0.8	71	85	0.8	71	87	0.8	71	79	0.9	71	88	0.8
Hartlepool	6	67	82	0.8	67	82	0.8	67	82	0.8	33	74	0.4	67	87	0.8
Middlesbrough	5	20	79	0.3	40	79	0.5	40	82	0.5	-	72	-	40	88	0.5
Redcar & Cleveland	6	83	83	1.0	83	83	1.0	67	87	0.8	50	72	0.7	67	89	0.7
Stockton On Tees	16	25	83	0.3	25	83	0.3	25	86	0.3	19	76	0.2	25	89	0.3
Gateshead	7	86	83	1.0	86	83	1.0	86	86	1.0	86	78	1.1	71	90	0.8
Newcastle Upon Tyne	14	29	82	0.3	29	82	0.3	29	84	0.3	29	74	0.4	29	90	0.3
North Tyneside	16	31	89	0.4	44	89	0.5	56	90	0.6	38	83	0.5	56	93	0.6
South Tyneside	13	54	83	0.6	54	83	0.6	46	86	0.5	23	77	0.3	54	90	0.6
Sunderland	28	43	82	0.5	43	82	0.5	32	83	0.4	32	74	0.4	39	89	0.4
<b>NORTH WEST</b>	<b>290</b>	<b>40</b>	<b>83</b>	<b>0.5</b>	<b>43</b>	<b>83</b>	<b>0.5</b>	<b>45</b>	<b>84</b>	<b>0.5</b>	<b>35</b>	<b>73</b>	<b>0.5</b>	<b>49</b>	<b>90</b>	<b>0.5</b>
Cheshire	25	52	86	0.6	52	86	0.6	48	88	0.5	40	77	0.5	52	92	0.6
Cumbria	14	29	84	0.3	29	84	0.3	21	85	0.3	21	74	0.3	36	90	0.4
Lancashire	47	47	84	0.6	43	84	0.5	55	84	0.7	43	73	0.6	60	90	0.7
Blackburn With Darwen	15	13	80	0.2	7	80	0.1	13	80	0.2	7	69	0.1	7	87	0.1
Blackpool	10	-	80	-	-	80	-	-	78	-	-	66	-	10	87	0.1
Halton	7	57	82	0.7	57	82	0.7	57	83	0.7	43	70	0.6	57	87	0.7
Warrington	8	13	87	0.1	13	87	0.1	13	87	0.1	13	76	0.2	13	93	0.1
Bolton	7	86	83	1.0	86	83	1.0	86	82	1.0	57	70	0.8	86	88	1.0
Bury	8	13	85	0.1	-	85	-	25	87	0.3	25	77	0.3	13	92	0.1
Manchester	55	29	75	0.4	47	75	0.6	40	76	0.5	31	64	0.5	53	85	0.6
Oldham	10	60	81	0.7	70	81	0.9	60	83	0.7	60	71	0.8	50	89	0.6
Rochdale	9	44	78	0.6	44	78	0.6	56	80	0.7	44	65	0.7	44	86	0.5
Salford	27	30	83	0.4	26	83	0.3	26	85	0.3	15	72	0.2	33	89	0.4
Stockport	13	62	86	0.7	69	86	0.8	62	89	0.7	54	76	0.7	69	91	0.8
Tameside	7	14	83	0.2	43	83	0.5	71	83	0.9	29	70	0.4	43	89	0.5
Trafford	7	57	85	0.7	57	85	0.7	71	86	0.8	57	77	0.7	71	90	0.8
Wigan	21	76	84	0.9	76	84	0.9	76	85	0.9	62	73	0.9	81	90	0.9

**Table 2 Eligibility and performance of looked after children in Key Stage 1 tasks and tests, compared to all children**

Local Authority	number looked after in Year 2 old enough to sit Key Stage 1 tasks and tests	percentage attaining level 2 <sup>1</sup> or above in each task or test																	
		reading									writing task			spelling test			mathematics task/test		
		comprehension tests			reading task			writing task			spelling test			mathematics task/test					
	looked after	all children <sup>3,4</sup>	ratio QP7 <sup>2</sup>	looked after	all children <sup>3,4</sup>	ratio QP7 <sup>2</sup>	looked after	all children <sup>3</sup>	ratio QP7 <sup>2</sup>	looked after	all children <sup>3</sup>	ratio QP7 <sup>2</sup>	looked after	all children <sup>3</sup>	ratio QP7 <sup>2</sup>				
<b>MERSEYSIDE</b>	<b>103</b>	<b>52</b>	<b>85</b>	<b>0.6</b>	<b>53</b>	<b>85</b>	<b>0.6</b>	<b>52</b>	<b>85</b>	<b>0.6</b>	<b>44</b>	<b>75</b>	<b>0.6</b>	<b>64</b>	<b>90</b>	<b>0.7</b>			
Knowsley	10	20	80	0.2	20	80	0.2	20	82	0.2	10	70	0.1	50	89	0.6			
Liverpool	51	49	82	0.6	49	82	0.6	49	83	0.6	39	71	0.5	57	88	0.6			
Sefton	11	64	87	0.7	64	87	0.7	64	87	0.7	55	77	0.7	82	91	0.9			
St Helens	12	67	87	0.8	67	87	0.8	67	87	0.8	58	80	0.7	67	92	0.7			
Wirral	19	63	87	0.7	68	87	0.8	63	87	0.7	58	77	0.7	79	91	0.9			
<b>YORKS &amp; THE HUMBER</b>	<b>261</b>	<b>49</b>	<b>83</b>	<b>0.6</b>	<b>52</b>	<b>83</b>	<b>0.6</b>	<b>52</b>	<b>84</b>	<b>0.6</b>	<b>39</b>	<b>72</b>	<b>0.5</b>	<b>59</b>	<b>89</b>	<b>0.7</b>			
North Yorkshire	11	55	88	0.6	55	88	0.6	64	88	0.7	36	76	0.5	64	92	0.7			
East Riding Of Yorkshire	10	60	86	0.7	50	86	0.6	40	88	0.5	40	74	0.5	60	91	0.7			
Kingston Upon Hull	42	50	79	0.6	62	79	0.8	57	80	0.7	50	66	0.8	67	87	0.8			
North East Lincolnshire	12	42	82	0.5	42	82	0.5	33	83	0.4	25	70	0.4	50	88	0.6			
North Lincolnshire	5	100	88	1.1	80	88	0.9	100	89	1.1	100	80	1.3	100	92	1.1			
York	3	-	87	-	-	87	-	-	88	-	-	77	-	33	93	0.4			
Barnsley	13	46	81	0.6	46	81	0.6	46	81	0.6	23	69	0.3	69	88	0.8			
Bradford	31	42	81	0.5	45	81	0.6	39	82	0.5	39	70	0.6	42	86	0.5			
Calderdale	1	-	85	-	-	85	-	100	85	1.2	-	74	-	100	91	1.1			
Doncaster	9	44	83	0.5	56	83	0.7	44	83	0.5	33	72	0.5	44	90	0.5			
Kirklees	11	64	82	0.8	55	82	0.7	64	84	0.8	36	72	0.5	64	88	0.7			
Leeds	47	55	83	0.7	55	83	0.7	49	84	0.6	43	73	0.6	64	89	0.7			
Rotherham	14	14	80	0.2	43	80	0.5	43	83	0.5	36	69	0.5	50	88	0.6			
Sheffield	39	51	79	0.6	46	79	0.6	62	82	0.8	36	68	0.5	59	87	0.7			
Wakefield	13	54	84	0.6	69	84	0.8	69	85	0.8	38	74	0.5	62	90	0.7			
<b>EAST MIDLANDS</b>	<b>115</b>	<b>38</b>	<b>84</b>	<b>0.5</b>	<b>44</b>	<b>84</b>	<b>0.5</b>	<b>44</b>	<b>85</b>	<b>0.5</b>	<b>37</b>	<b>73</b>	<b>0.5</b>	<b>48</b>	<b>91</b>	<b>0.5</b>			
Derbyshire	9	56	87	0.6	56	87	0.6	56	88	0.6	44	77	0.6	33	91	0.4			
Leicestershire	5	20	85	0.2	60	85	0.7	20	87	0.2	-	74	-	20	93	0.2			
Lincolnshire	24	13	85	0.1	17	85	0.2	25	86	0.3	17	75	0.2	21	91	0.2			
Northamptonshire	19	42	87	0.5	53	87	0.6	58	87	0.7	53	75	0.7	79	92	0.9			
Nottinghamshire	18	61	84	0.7	61	84	0.7	61	85	0.7	61	72	0.8	61	91	0.7			
Derby	11	27	83	0.3	36	83	0.4	27	84	0.3	36	75	0.5	27	90	0.3			
Leicester	10	30	77	0.4	40	77	0.5	40	78	0.5	10	62	0.2	60	86	0.7			
Nottingham	19	53	75	0.7	53	75	0.7	53	77	0.7	42	63	0.7	58	84	0.7			
Rutland	-	-	83	-	-	83	-	-	86	-	-	71	-	-	92	-			

**Table 2 Eligibility and performance of looked after children in Key Stage 1 tasks and tests, compared to all children**

Local Authority	number looked after in Year 2 old enough to sit Key Stage 1 tasks and tests	percentage attaining level 2 <sup>1</sup> or above in each task or test														
		reading									writing task					
		comprehension tests			reading task			writing task			spelling test			mathematics task/test		
	looked after	all children <sup>3,4</sup>	ratio QP7 <sup>2</sup>	looked after	all children <sup>3,4</sup>	ratio QP7 <sup>2</sup>	looked after	all children <sup>3</sup>	ratio QP7 <sup>2</sup>	looked after	all children <sup>3</sup>	ratio QP7 <sup>2</sup>	looked after	all children <sup>3</sup>	ratio QP7 <sup>2</sup>	
<b>WEST MIDLANDS</b>	<b>238</b>	<b>37</b>	<b>83</b>	<b>0.4</b>	<b>40</b>	<b>83</b>	<b>0.5</b>	<b>47</b>	<b>84</b>	<b>0.6</b>	<b>32</b>	<b>71</b>	<b>0.5</b>	<b>49</b>	<b>89</b>	<b>0.6</b>
Shropshire	2	50	88	0.6	-	88	-	50	90	0.6	50	77	0.6	50	92	0.5
Staffordshire	..	..	88	..	..	88	..	..	89	..	..	77	..	..	93	..
Warwickshire	4	75	85	0.9	75	85	0.9	75	85	0.9	50	72	0.7	75	90	0.8
Worcestershire	22	36	84	0.4	27	84	0.3	45	85	0.5	36	73	0.5	50	90	0.6
Herefordshire	6	50	85	0.6	50	85	0.6	50	85	0.6	50	74	0.7	67	90	0.7
Stoke-On-Trent	14	43	80	0.5	43	80	0.5	43	80	0.5	43	69	0.6	36	88	0.4
Telford & Wrekin	5	40	81	0.5	40	81	0.5	40	86	0.5	40	71	0.6	40	89	0.4
Birmingham	88	30	80	0.4	38	80	0.5	47	82	0.6	27	69	0.4	42	87	0.5
Coventry	25	20	81	0.2	24	81	0.3	28	83	0.3	8	68	0.1	56	89	0.6
Dudley	13	46	82	0.6	46	82	0.6	54	83	0.7	31	70	0.4	46	86	0.5
Sandwell	13	38	77	0.5	38	77	0.5	38	77	0.5	38	63	0.6	38	86	0.4
Solihull	2	50	89	0.6	50	89	0.6	50	90	0.6	50	79	0.6	50	93	0.5
Walsall	15	47	81	0.6	53	81	0.7	67	82	0.8	40	69	0.6	67	87	0.8
Wolverhampton	10	70	79	0.9	60	79	0.8	70	78	0.9	60	66	0.9	80	86	0.9
<b>SOUTH WEST</b>	<b>144</b>	<b>47</b>	<b>84</b>	<b>0.6</b>	<b>48</b>	<b>84</b>	<b>0.6</b>	<b>47</b>	<b>85</b>	<b>0.6</b>	<b>39</b>	<b>70</b>	<b>0.6</b>	<b>60</b>	<b>90</b>	<b>0.7</b>
Cornwall	17	41	84	0.5	41	84	0.5	29	81	0.4	24	68	0.3	41	90	0.5
Devon	27	48	84	0.6	48	84	0.6	48	85	0.6	37	70	0.5	70	91	0.8
Dorset	6	83	86	1.0	83	86	1.0	67	86	0.8	50	71	0.7	67	90	0.7
Gloucestershire	18	39	87	0.4	44	87	0.5	39	88	0.4	28	75	0.4	44	92	0.5
Isles Of Scilly	-	-	100	-	-	100	-	-	100	-	-	100	-	-	100	-
Somerset	7	29	85	0.3	29	85	0.3	43	86	0.5	29	70	0.4	43	91	0.5
Wiltshire	7	..	83	..	43	83	0.5	57	84	0.7	43	68	0.6	86	89	1.0
Bath & North East Somerset	5	80	85	0.9	80	85	0.9	80	86	0.9	40	73	0.5	80	89	0.9
Bournemouth	7	43	83	0.5	57	83	0.7	57	83	0.7	43	70	0.6	71	88	0.8
Bristol	16	44	79	0.6	38	79	0.5	38	79	0.5	38	65	0.6	44	85	0.5
North Somerset	1	100	85	1.2	100	85	1.2	100	85	1.2	100	71	1.4	100	91	1.1
Plymouth	14	50	79	0.6	57	79	0.7	57	81	0.7	57	66	0.9	71	86	0.8
Poole	2	50	84	0.6	-	84	-	100	87	1.2	50	72	0.7	100	89	1.1
South Gloucestershire	4	25	88	0.3	-	88	-	25	89	0.3	25	78	0.3	50	93	0.5
Swindon	7	57	84	0.7	71	84	0.9	71	87	0.8	43	72	0.6	57	90	0.6
Torbay	6	33	83	0.4	50	83	0.6	17	86	0.2	67	70	1.0	67	89	0.7

**Table 2 Eligibility and performance of looked after children in Key Stage 1 tasks and tests, compared to all children**

Local Authority	number looked after in Year 2 old enough to sit Key Stage 1 tasks and tests	percentage attaining level 2 <sup>1</sup> or above in each task or test																	
		reading									writing task			spelling test			mathematics task/test		
		comprehension tests			reading task			writing task			spelling test			mathematics task/test					
	looked after	all children <sup>3,4</sup>	ratio QP7 <sup>2</sup>	looked after	all children <sup>3,4</sup>	ratio QP7 <sup>2</sup>	looked after	all children <sup>3</sup>	ratio QP7 <sup>2</sup>	looked after	all children <sup>3</sup>	ratio QP7 <sup>2</sup>	looked after	all children <sup>3</sup>	ratio QP7 <sup>2</sup>				
<b>LONDON</b>	<b>327</b>	<b>50</b>	<b>80</b>	<b>0.6</b>	<b>50</b>	<b>80</b>	<b>0.6</b>	<b>51</b>	<b>82</b>	<b>0.6</b>	<b>45</b>	<b>67</b>	<b>0.7</b>	<b>54</b>	<b>88</b>	<b>0.6</b>			
Camden	6	-	79	-	17	79	0.2	17	78	0.2	-	64	-	33	87	0.4			
City Of London	-	-	83	-	-	83	-	-	70	-	-	67	-	-	83	-			
Greenwich	21	38	73	0.5	48	73	0.7	43	73	0.6	38	58	0.7	48	84	0.6			
Hackney	9	..	74	..	44	74	0.6	44	75	0.6	22	60	0.4	67	82	0.8			
Hammersmith & Fulham	15	53	79	0.7	53	79	0.7	53	82	0.7	53	71	0.7	67	85	0.8			
Islington	23	48	75	0.6	48	75	0.6	43	74	0.6	39	58	0.7	43	83	0.5			
Kensington & Chelsea	7	29	80	0.4	29	80	0.4	43	81	0.5	29	70	0.4	43	90	0.5			
Lambeth	..	..	77	..	..	77	..	..	77	..	..	64	..	..	84	..			
Lewisham	9	44	78	0.6	44	78	0.6	33	78	0.4	44	65	0.7	56	87	0.6			
Southwark	24	33	77	0.4	33	77	0.4	33	77	0.4	21	63	0.3	38	88	0.4			
Tower Hamlets	8	50	77	0.6	50	77	0.6	50	79	0.6	50	66	0.8	50	87	0.6			
Wandsworth	8	63	82	0.8	63	82	0.8	63	83	0.8	50	68	0.7	63	88	0.7			
Westminster	10	90	80	1.1	90	80	1.1	80	79	1.0	60	67	0.9	90	88	1.0			
Barking & Dagenham	9	-	80	-	33	80	0.4	-	82	-	33	66	0.5	33	91	0.4			
Barnet	6	67	84	0.8	17	84	0.2	33	87	0.4	33	73	0.5	50	91	0.5			
Bexley	3	33	84	0.4	33	84	0.4	33	86	0.4	33	69	0.5	-	88	-			
Brent	18	67	83	0.8	33	83	0.4	67	84	0.8	50	72	0.7	72	89	0.8			
Bromley	9	44	86	0.5	56	86	0.6	56	87	0.6	44	76	0.6	67	91	0.7			
Croydon	11	..	85	..	64	85	0.8	64	85	0.7	64	70	0.9	64	90	0.7			
Ealing†	9	56	80	0.7	56	80	0.7	56	80	0.7	56	66	0.8	22	87	0.3			
Enfield	10	40	79	0.5	40	79	0.5	40	83	0.5	40	65	0.6	30	90	0.3			
Haringey	7	57	75	0.8	57	75	0.8	57	76	0.8	57	62	0.9	57	85	0.7			
Harrow	6	83	87	1.0	83	87	1.0	83	89	0.9	67	75	0.9	83	92	0.9			
Havering	3	33	87	0.4	33	87	0.4	33	88	0.4	33	73	0.5	33	92	0.4			
Hillingdon	15	47	83	0.6	47	83	0.6	47	86	0.5	47	73	0.6	47	92	0.5			
Hounslow	8	75	78	1.0	50	78	0.6	75	81	0.9	75	64	1.2	63	87	0.7			
Kingston Upon Thames	-	-	84	-	-	84	-	-	86	-	-	72	-	-	89	-			
Merton	5	60	84	0.7	20	84	0.2	80	84	1.0	60	72	0.8	60	90	0.7			
Newham	21	76	72	1.1	76	72	1.1	71	74	1.0	76	61	1.3	76	83	0.9			
Redbridge	4	75	82	0.9	75	82	0.9	75	85	0.9	25	70	0.4	50	89	0.6			
Richmond Upon Thames	3	33	88	0.4	67	88	0.8	67	89	0.8	33	76	0.4	67	94	0.7			
Sutton	3	-	85	-	-	85	-	-	86	-	-	72	-	33	92	0.4			
Waltham Forest	11	64	77	0.8	82	77	1.1	73	75	1.0	55	62	0.9	64	87	0.7			



**Table 2 Eligibility and performance of looked after children in Key Stage 1 tasks and tests, compared to all children**

Local Authority	number looked after in Year 2 old enough to sit Key Stage 1 tasks and tests	percentage attaining level 2 <sup>1</sup> or above in each task or test														
		reading						writing task			spelling test			mathematics task/test		
		comprehension tests			reading task			looked after	all children <sup>3</sup>	ratio QP7 <sup>2</sup>	looked after	all children <sup>3</sup>	ratio QP7 <sup>2</sup>	looked after	all children <sup>3</sup>	ratio QP7 <sup>2</sup>
<b>EAST OF ENGLAND</b>	<b>185</b>	<b>46</b>	<b>84</b>	<b>0.5</b>	<b>52</b>	<b>84</b>	<b>0.6</b>	<b>51</b>	<b>85</b>	<b>0.6</b>	<b>37</b>	<b>71</b>	<b>0.5</b>	<b>55</b>	<b>90</b>	<b>0.6</b>
Bedfordshire	17	35	87	0.4	35	87	0.4	47	87	0.5	47	75	0.6	47	91	0.5
Cambridgeshire	16	44	84	0.5	56	84	0.7	50	86	0.6	44	72	0.6	44	90	0.5
Essex†	37	38	84	0.4	41	84	0.5	43	85	0.5	27	70	0.4	43	90	0.5
Hertfordshire	26	38	86	0.4	69	86	0.8	58	86	0.7	23	74	0.3	69	91	0.8
Norfolk	20	50	84	0.6	55	84	0.7	45	85	0.5	40	71	0.6	75	90	0.8
Suffolk	22	41	85	0.5	41	85	0.5	41	86	0.5	14	72	0.2	55	91	0.6
Luton	11	64	79	0.8	55	79	0.7	55	80	0.7	45	68	0.7	55	85	0.6
Peterborough	20	55	79	0.7	60	79	0.8	60	80	0.8	50	66	0.8	50	87	0.6
Southend	7	57	84	0.7	57	84	0.7	71	86	0.8	57	69	0.8	71	89	0.8
Thurrock	9	78	77	1.0	78	77	1.0	78	78	1.0	78	58	1.3	56	88	0.6
<b>SOUTH EAST</b>	<b>239</b>	<b>50</b>	<b>84</b>	<b>0.6</b>	<b>51</b>	<b>84</b>	<b>0.6</b>	<b>51</b>	<b>86</b>	<b>0.6</b>	<b>39</b>	<b>72</b>	<b>0.5</b>	<b>57</b>	<b>90</b>	<b>0.6</b>
Buckinghamshire	13	54	87	0.6	54	87	0.6	31	87	0.4	23	77	0.3	54	92	0.6
East Sussex	14	64	82	0.8	50	82	0.6	57	83	0.7	36	70	0.5	50	89	0.6
Hampshire	27	41	87	0.5	48	87	0.6	56	88	0.6	41	74	0.6	59	92	0.6
Kent	..	..	81	..	..	81	..	..	82	..	..	67	..	..	88	..
Oxfordshire	17	47	84	0.6	65	84	0.8	59	86	0.7	29	71	0.4	65	90	0.7
Surrey	26	54	88	0.6	38	88	0.4	50	89	0.6	50	77	0.6	46	92	0.5
West Sussex†	11	27	84	0.3	36	84	0.4	36	85	0.4	27	71	0.4	9	91	0.1
Bracknell Forest	3	33	86	0.4	33	86	0.4	33	86	0.4	33	73	0.5	100	92	1.1
Brighton & Hove	11	45	80	0.6	45	80	0.6	36	83	0.4	18	68	0.3	55	90	0.6
Isle Of Wight	8	25	84	0.3	38	84	0.4	38	86	0.4	25	68	0.4	75	90	0.8
Medway Towns	11	36	81	0.4	36	81	0.4	27	83	0.3	27	69	0.4	36	89	0.4
Milton Keynes	10	70	79	0.9	70	79	0.9	70	81	0.9	60	66	0.9	80	88	0.9
Portsmouth	10	70	83	0.8	70	83	0.8	60	83	0.7	60	70	0.9	70	92	0.8
Reading	4	50	80	0.6	50	80	0.6	50	80	0.6	25	66	0.4	50	87	0.6
Slough	4	100	86	1.2	100	86	1.2	100	86	1.2	100	77	1.3	100	91	1.1
Southampton	14	64	83	0.8	64	83	0.8	57	84	0.7	43	70	0.6	79	91	0.9
West Berkshire	5	40	83	0.5	40	83	0.5	60	87	0.7	40	71	0.6	80	91	0.9
Windsor & Maidenhead	1	100	88	1.1	100	88	1.1	100	87	1.1	100	79	1.3	100	92	1.1
Wokingham	3	67	88	0.8	67	88	0.8	67	90	0.7	67	78	0.9	67	93	0.7

1 target level for age group

2 QP Indicator 7, defined as: The proportion of looked after children attaining the target levels or better in each of the tested subjects in the National Curriculum Assessments tests, expressed as a ratio of the proportion of all children at that stage attaining the target level or better in the authority

3 source: DfEE statistical first release 'National curriculum assessments of 7, 11 and 14 year olds by Local Education Authority, 2000' (Provisional figures; LEA maintained schools only)

4 the 'all children' Key stage 1 Reading task figure is derived by DfEE from an average of children attaining level 2 or above in the reading task and pupils attaining level 3 or above in the reading comprehension test, therefore cannot be directly compared with the reading task or reading comprehension test figures for looked after children

**Table 3 Eligibility and performance of looked after children in Key Stage 2 tasks and tests, compared to all children**

Local Authority	number looked after in Year 6 old enough to sit Key Stage 2 tasks and tests	percentage attaining level 4 <sup>1</sup> or above in each task or test								
		English			Mathematics			Science		
		looked after	all children <sup>2</sup>	ratio QP7 <sup>3</sup>	looked after	all children <sup>2</sup>	ratio QP7 <sup>3</sup>	looked after	all children <sup>2</sup>	ratio QP7 <sup>3</sup>
<b>ENGLAND</b>	<b>2,700</b>	<b>32</b>	<b>74</b>	<b>0.4</b>	<b>30</b>	<b>71</b>	<b>0.4</b>	<b>44</b>	<b>84</b>	<b>0.5</b>
<b>NORTH EAST</b>	<b>161</b>	<b>35</b>	<b>74</b>	<b>0.5</b>	<b>27</b>	<b>72</b>	<b>0.4</b>	<b>50</b>	<b>85</b>	<b>0.6</b>
Durham	25	24	75	0.3	8	74	0.1	36	86	0.4
Northumberland	10	70	76	0.9	40	71	0.6	70	86	0.8
Darlington	7	71	74	1.0	57	75	0.8	43	84	0.5
Hartlepool	9	33	72	0.5	22	70	0.3	33	83	0.4
Middlesbrough	16	13	69	0.2	6	67	0.1	44	80	0.5
Redcar & Cleveland	6	50	74	0.7	33	71	0.5	67	85	0.8
Stockton On Tees	12	50	76	0.7	42	73	0.6	67	86	0.8
Gateshead	13	31	75	0.4	15	73	0.2	62	88	0.7
Newcastle Upon Tyne	15	13	68	0.2	13	65	0.2	40	81	0.5
North Tyneside	12	50	77	0.6	42	74	0.6	50	86	0.6
South Tyneside	12	50	72	0.7	50	74	0.7	50	83	0.6
Sunderland	24	29	72	0.4	38	70	0.5	54	84	0.6
<b>NORTH WEST</b>	<b>303</b>	<b>34</b>	<b>75</b>	<b>0.5</b>	<b>33</b>	<b>73</b>	<b>0.4</b>	<b>44</b>	<b>85</b>	<b>0.5</b>
Cheshire	17	18	80	0.2	12	78	0.1	18	89	0.2
Cumbria	18	39	78	0.5	44	76	0.6	50	87	0.6
Lancashire	57	30	76	0.4	26	74	0.4	40	85	0.5
Blackburn With Darwen	9	44	73	0.6	33	68	0.5	33	82	0.4
Blackpool	10	10	72	0.1	20	66	0.3	20	79	0.3
Halton	6	17	74	0.2	17	71	0.2	17	85	0.2
Warrington	10	60	79	0.8	60	74	0.8	60	87	0.7
Bolton	11	18	75	0.2	18	73	0.2	36	82	0.4
Bury	11	18	80	0.2	18	80	0.2	27	89	0.3
Manchester	49	31	65	0.5	35	64	0.5	51	78	0.7
Oldham	12	58	73	0.8	50	70	0.7	67	82	0.8
Rochdale	14	21	70	0.3	7	69	0.1	29	81	0.4
Salford	26	46	74	0.6	42	72	0.6	42	83	0.5
Stockport	14	36	79	0.5	29	76	0.4	43	87	0.5
Tameside	9	22	73	0.3	22	71	0.3	33	83	0.4
Trafford	4	100	82	1.2	100	78	1.3	100	88	1.1
Wigan	26	46	75	0.6	50	74	0.7	65	85	0.8

**Table 3 Eligibility and performance of looked after children in Key Stage 2 tasks and tests, compared to all children**

Local Authority	number looked after in Year 6 old enough to sit Key Stage 2 tasks and tests	percentage attaining level 4 <sup>1</sup> or above in each task or test								
		English			Mathematics			Science		
		looked after	all children <sup>2</sup>	ratio QP7 <sup>3</sup>	looked after	all children <sup>2</sup>	ratio QP7 <sup>3</sup>	looked after	all children <sup>2</sup>	ratio QP7 <sup>3</sup>
<b>MERSEYSIDE</b>	<b>126</b>	<b>35</b>	<b>75</b>	<b>0.5</b>	<b>34</b>	<b>71</b>	<b>0.5</b>	<b>45</b>	<b>85</b>	<b>0.5</b>
Knowsley	16	44	70	0.6	50	68	0.7	50	84	0.6
Liverpool	61	21	70	0.3	21	66	0.3	30	82	0.4
Sefton	21	43	80	0.5	33	77	0.4	57	88	0.6
St Helens	12	67	78	0.9	67	77	0.9	67	88	0.8
Wirral	16	44	77	0.6	44	72	0.6	69	85	0.8
<b>YORKS &amp; THE HUMBER</b>	<b>301</b>	<b>33</b>	<b>72</b>	<b>0.5</b>	<b>30</b>	<b>70</b>	<b>0.4</b>	<b>46</b>	<b>83</b>	<b>0.6</b>
North Yorkshire	13	54	81	0.7	38	78	0.5	77	89	0.9
East Riding Of Yorkshire	9	56	79	0.7	33	75	0.4	78	88	0.9
Kingston Upon Hull	25	32	65	0.5	24	67	0.4	52	81	0.6
North East Lincolnshire	12	25	71	0.4	25	68	0.4	25	80	0.3
North Lincolnshire	5	60	76	0.8	60	72	0.8	60	87	0.7
York	5	20	78	0.3	20	74	0.3	20	86	0.2
Barnsley	14	14	68	0.2	21	67	0.3	29	80	0.4
Bradford	39	23	66	0.3	18	59	0.3	28	74	0.4
Calderdale	8	38	73	0.5	38	72	0.5	38	82	0.5
Doncaster	24	29	69	0.4	17	67	0.2	42	82	0.5
Kirklees	14	14	72	0.2	21	68	0.3	36	82	0.4
Leeds	70	46	76	0.6	43	73	0.6	59	86	0.7
Rotherham	17	18	71	0.3	24	70	0.3	41	82	0.5
Sheffield	25	24	68	0.4	24	66	0.4	40	80	0.5
Wakefield	21	38	74	0.5	38	71	0.5	52	84	0.6
<b>EAST MIDLANDS</b>	<b>180</b>	<b>31</b>	<b>73</b>	<b>0.4</b>	<b>32</b>	<b>70</b>	<b>0.5</b>	<b>37</b>	<b>83</b>	<b>0.4</b>
Derbyshire	27	33	76	0.4	30	72	0.4	26	85	0.3
Leicestershire	8	50	78	0.6	38	74	0.5	50	88	0.6
Lincolnshire	23	4	76	0.1	4	73	0.1	4	84	0.1
Northamptonshire	26	38	75	0.5	31	70	0.4	38	85	0.5
Nottinghamshire	28	43	73	0.6	54	71	0.8	50	83	0.6
Derby	14	36	69	0.5	43	67	0.6	43	79	0.5
Leicester	25	24	64	0.4	36	64	0.6	48	79	0.6
Nottingham	29	28	60	0.5	28	60	0.5	41	73	0.6
Rutland	-	-	83	-	-	83	-	-	90	-

**Table 3 Eligibility and performance of looked after children in Key Stage 2 tasks and tests, compared to all children**

Local Authority	number looked after in Year 6 old enough to sit Key Stage 2 tasks and tests	percentage attaining level 4 <sup>1</sup> or above in each task or test								
		English			Mathematics			Science		
		looked after	all children <sup>2</sup>	ratio QP7 <sup>3</sup>	looked after	all children <sup>2</sup>	ratio QP7 <sup>3</sup>	looked after	all children <sup>2</sup>	ratio QP7 <sup>3</sup>
<b>WEST MIDLANDS</b>	<b>327</b>	<b>23</b>	<b>73</b>	<b>0.3</b>	<b>17</b>	<b>69</b>	<b>0.3</b>	<b>39</b>	<b>83</b>	<b>0.5</b>
Shropshire	10	20	79	0.3	10	77	0.1	60	89	0.7
Staffordshire	..	..	76	..	..	72	..	..	87	..
Warwickshire	16	38	77	0.5	25	73	0.3	56	87	0.6
Worcestershire	23	26	74	0.4	9	68	0.1	22	83	0.3
Herefordshire	10	40	77	0.5	50	75	0.7	50	87	0.6
Stoke-On-Trent	21	5	69	0.1	5	68	0.1	10	84	0.1
Telford & Wrekin	3	-	72	-	-	69	-	-	83	-
Birmingham	109	24	69	0.3	16	67	0.2	39	81	0.5
Coventry	19	5	72	0.1	5	68	0.1	32	82	0.4
Dudley	18	28	73	0.4	22	69	0.3	44	82	0.5
Sandwell	29	24	65	0.4	14	60	0.2	38	77	0.5
Solihull	5	20	82	0.2	40	77	0.5	60	89	0.7
Walsall	15	7	69	0.1	13	64	0.2	47	77	0.6
Wolverhampton	24	25	70	0.4	25	65	0.4	54	80	0.7
<b>SOUTH WEST</b>	<b>222</b>	<b>32</b>	<b>75</b>	<b>0.4</b>	<b>33</b>	<b>72</b>	<b>0.5</b>	<b>45</b>	<b>85</b>	<b>0.5</b>
Cornwall	26	54	76	0.7	50	72	0.7	77	85	0.9
Devon	33	30	75	0.4	33	72	0.5	48	86	0.6
Dorset	9	44	78	0.6	44	73	0.6	56	90	0.6
Gloucestershire	29	24	77	0.3	28	73	0.4	38	87	0.4
Isles Of Scilly	-	-	83	-	-	83	-	-	87	-
Somerset	19	26	75	0.3	32	70	0.4	42	85	0.5
Wiltshire	11	9	76	0.1	27	71	0.4	27	85	0.3
Bath & North East Somerset	5	60	76	0.8	60	78	0.8	60	87	0.7
Bournemouth	8	25	76	0.3	25	72	0.3	38	85	0.4
Bristol	29	21	66	0.3	21	63	0.3	28	78	0.4
North Somerset	5	80	78	1.0	60	76	0.8	100	88	1.1
Plymouth	21	24	73	0.3	29	70	0.4	33	83	0.4
Poole	4	50	75	0.7	25	67	0.4	100	85	1.2
South Gloucestershire	10	30	78	0.4	30	76	0.4	30	88	0.3
Swindon	7	43	72	0.6	29	70	0.4	29	84	0.3
Torbay	6	33	75	0.4	33	72	0.5	50	85	0.6

**Table 3 Eligibility and performance of looked after children in Key Stage 2 tasks and tests, compared to all children**

Local Authority	number looked after in Year 6 old enough to sit Key Stage 2 tasks and tests	percentage attaining level 4 <sup>1</sup> or above in each task or test								
		English			Mathematics			Science		
		looked after	all children <sup>2</sup>	ratio QP7 <sup>3</sup>	looked after	all children <sup>2</sup>	ratio QP7 <sup>3</sup>	looked after	all children <sup>2</sup>	ratio QP7 <sup>3</sup>
<b>LONDON</b>	<b>462</b>	<b>32</b>	<b>72</b>	<b>0.4</b>	<b>33</b>	<b>70</b>	<b>0.5</b>	<b>41</b>	<b>83</b>	<b>0.5</b>
Camden	23	13	72	0.2	17	70	0.2	35	82	0.4
City Of London	-	-	79	-	-	75	-	-	93	-
Greenwich	30	23	63	0.4	30	62	0.5	23	78	0.3
Hackney	20	30	61	0.5	30	60	0.5	40	73	0.6
Hammersmith & Fulham	20	15	72	0.2	15	70	0.2	15	83	0.2
Islington	21	43	69	0.6	24	66	0.4	43	80	0.5
Kensington & Chelsea	7	57	83	0.7	43	80	0.5	86	90	1.0
Lambeth	..	..	68	..	..	65	..	..	78	..
Lewisham	20	40	68	0.6	40	65	0.6	45	80	0.6
Southwark	29	34	65	0.5	34	61	0.6	41	74	0.6
Tower Hamlets	23	35	67	0.5	35	68	0.5	30	78	0.4
Wandsworth	16	19	72	0.3	25	68	0.4	19	80	0.2
Westminster	10	20	77	0.3	50	76	0.7	40	87	0.5
Barking & Dagenham	7	14	71	0.2	29	70	0.4	71	87	0.8
Barnet	8	88	81	1.1	63	78	0.8	88	89	1.0
Bexley	8	13	77	0.2	-	72	-	25	85	0.3
Brent	15	40	73	0.5	47	72	0.6	47	83	0.6
Bromley	11	45	80	0.6	45	76	0.6	45	88	0.5
Croydon	13	38	73	0.5	38	70	0.5	46	84	0.6
Ealing†	23	9	72	0.1	9	70	0.1	9	83	0.1
Enfield	10	30	72	0.4	30	68	0.4	30	80	0.4
Haringey	10	30	63	0.5	10	61	0.2	40	73	0.5
Harrow	4	-	80	-	25	76	0.3	25	88	0.3
Havering	7	57	78	0.7	57	75	0.8	57	87	0.7
Hillingdon	17	29	77	0.4	35	74	0.5	47	87	0.5
Hounslow	11	18	72	0.3	18	69	0.3	64	85	0.7
Kingston Upon Thames	5	40	80	0.5	60	76	0.8	60	87	0.7
Merton	10	40	75	0.5	50	69	0.7	50	85	0.6
Newham	6	50	64	0.8	50	63	0.8	33	77	0.4
Redbridge	5	60	76	0.8	40	73	0.6	60	84	0.7
Richmond Upon Thames	7	43	84	0.5	43	81	0.5	71	92	0.8
Sutton	8	-	80	-	13	74	0.2	38	88	0.4
Waltham Forest	24	67	66	1.0	71	65	1.1	71	77	0.9

**Table 3 Eligibility and performance of looked after children in Key Stage 2 tasks and tests, compared to all children**

Local Authority	number looked after in Year 6 old enough to sit Key Stage 2 tasks and tests	percentage attaining level 4 <sup>1</sup> or above in each task or test								
		English			Mathematics			Science		
		looked after	all children <sup>2</sup>	ratio QP7 <sup>3</sup>	looked after	all children <sup>2</sup>	ratio QP7 <sup>3</sup>	looked after	all children <sup>2</sup>	ratio QP7 <sup>3</sup>
<b>EAST OF ENGLAND</b>	<b>242</b>	<b>36</b>	<b>76</b>	<b>0.5</b>	<b>37</b>	<b>72</b>	<b>0.5</b>	<b>46</b>	<b>85</b>	<b>0.5</b>
Bedfordshire	21	43	76	0.6	33	69	0.5	48	85	0.6
Cambridgeshire	22	9	76	0.1	23	73	0.3	32	86	0.4
Essex†	58	28	76	0.4	28	73	0.4	34	84	0.4
Hertfordshire	41	61	80	0.8	66	76	0.9	73	89	0.8
Norfolk	24	21	74	0.3	21	70	0.3	33	84	0.4
Suffolk	30	27	75	0.4	40	69	0.6	43	85	0.5
Luton	14	29	72	0.4	14	65	0.2	36	82	0.4
Peterborough	14	43	73	0.6	50	67	0.7	64	84	0.8
Southend	12	50	72	0.7	25	71	0.4	42	82	0.5
Thurrock	6	83	65	1.3	83	64	1.3	83	80	1.0
<b>SOUTH EAST</b>	<b>342</b>	<b>36</b>	<b>76</b>	<b>0.5</b>	<b>31</b>	<b>72</b>	<b>0.4</b>	<b>49</b>	<b>86</b>	<b>0.6</b>
Buckinghamshire	18	11	81	0.1	17	76	0.2	22	87	0.3
East Sussex	24	33	74	0.4	29	71	0.4	46	85	0.5
Hampshire	40	35	78	0.4	30	76	0.4	55	89	0.6
Kent	..	..	74	..	..	70	..	..	82	..
Oxfordshire	27	48	76	0.6	30	71	0.4	52	86	0.6
Surrey	32	41	83	0.5	34	78	0.4	56	91	0.6
West Sussex†	25	36	76	0.5	28	72	0.4	52	88	0.6
Bracknell Forest	1	-	78	-	-	76	-	-	88	-
Brighton & Hove	19	32	72	0.4	42	70	0.6	47	83	0.6
Isle Of Wight	11	55	75	0.7	45	66	0.7	64	85	0.7
Medway Towns	11	36	71	0.5	45	67	0.7	55	80	0.7
Milton Keynes	13	23	69	0.3	31	64	0.5	38	82	0.5
Portsmouth	16	50	67	0.7	31	66	0.5	56	79	0.7
Reading	2	50	69	0.7	-	64	-	-	80	-
Slough	6	83	74	1.1	67	70	0.9	83	84	1.0
Southampton	15	20	68	0.3	20	66	0.3	60	83	0.7
West Berkshire	10	30	79	0.4	20	76	0.3	40	87	0.5
Windsor & Maidenhead	3	67	78	0.9	33	73	0.5	33	88	0.4
Wokingham	7	29	84	0.3	14	81	0.2	43	90	0.5

1 target level for age group

2 source: DfEE statistical first release 'National curriculum assessments of 7, 11 and 14 year olds by Local Education Authority, 2000' (please note - these figures are provisional and refer to LEA maintained schools only)

3 QP Indicator 7, defined as: The proportion of looked after children attaining the target levels or better in each of the tested subjects in the National Curriculum Assessments tests, expressed as a ratio of the proportion of all children at that stage attaining the target level or better in the authority

**Table 4 Eligibility and performance of looked after children in Key Stage 3 tasks and tests, compared to all children**

Local Authority	number looked after in Year 9 old enough to sit Key Stage 3 tasks and tests	percentage attaining level 5 <sup>1</sup> or above in each task or test								
		English			Mathematics			Science		
		looked after	all children <sup>2</sup>	ratio QP7 <sup>3</sup>	looked after	all children <sup>2</sup>	ratio QP7 <sup>3</sup>	looked after	all children <sup>2</sup>	ratio QP7 <sup>3</sup>
<b>ENGLAND</b>	<b>3,400</b>	<b>19</b>	<b>63</b>	<b>0.3</b>	<b>19</b>	<b>65</b>	<b>0.3</b>	<b>18</b>	<b>59</b>	<b>0.3</b>
<b>NORTH EAST</b>	<b>209</b>	<b>15</b>	<b>60</b>	<b>0.3</b>	<b>11</b>	<b>61</b>	<b>0.2</b>	<b>14</b>	<b>56</b>	<b>0.3</b>
Durham	39	8	61	0.1	8	62	0.1	10	58	0.2
Northumberland	22	27	65	0.4	23	67	0.3	23	64	0.4
Darlington	6	-	65	-	17	66	0.3	-	58	-
Hartlepool	1	-	55	-	-	57	-	-	53	-
Middlesbrough	12	8	58	0.1	-	50	-	-	44	-
Redcar & Cleveland	10	10	62	0.2	10	63	0.2	20	58	0.3
Stockton On Tees	11	18	61	0.3	27	61	0.4	27	55	0.5
Gateshead	19	21	61	0.3	5	63	0.1	11	59	0.2
Newcastle Upon Tyne	20	15	50	0.3	10	54	0.2	10	47	0.2
North Tyneside	25	20	65	0.3	16	64	0.2	28	60	0.5
South Tyneside	15	20	60	0.3	-	62	-	20	57	0.4
Sunderland	29	14	61	0.2	14	58	0.2	7	53	0.1
<b>NORTH WEST</b>	<b>374</b>	<b>19</b>	<b>62</b>	<b>0.3</b>	<b>18</b>	<b>64</b>	<b>0.3</b>	<b>16</b>	<b>58</b>	<b>0.3</b>
Cheshire	13	8	71	0.1	15	72	0.2	15	69	0.2
Cumbria	27	15	64	0.2	22	69	0.3	26	66	0.4
Lancashire	73	26	65	0.4	23	68	0.3	15	62	0.2
Blackburn With Darwen	14	7	54	0.1	7	57	0.1	-	52	-
Blackpool	11	27	60	0.5	27	59	0.5	18	50	0.4
Halton	5	-	57	-	-	60	-	-	54	-
Warrington	9	11	67	0.2	11	68	0.2	11	59	0.2
Bolton	16	6	62	0.1	13	63	0.2	6	58	0.1
Bury	6	33	69	0.5	17	71	0.2	-	64	-
Manchester	67	16	48	0.3	16	46	0.4	13	38	0.4
Oldham	14	36	58	0.6	29	58	0.5	36	51	0.7
Rochdale	13	8	53	0.1	-	56	-	-	50	-
Salford	36	11	52	0.2	11	56	0.2	17	49	0.3
Stockport	26	27	65	0.4	23	69	0.3	19	62	0.3
Tameside	15	7	61	0.1	20	58	0.3	20	52	0.4
Trafford	6	83	75	1.1	83	72	1.2	83	68	1.2
Wigan	23	22	65	0.3	13	64	0.2	13	61	0.2

**Table 4 Eligibility and performance of looked after children in Key Stage 3 tasks and tests, compared to all children**

Local Authority	number looked after in Year 9 old enough to sit Key Stage 3 tasks and tests	percentage attaining level 5 <sup>1</sup> or above in each task or test								
		English			Mathematics			Science		
		looked after	all children <sup>2</sup>	ratio QP7 <sup>3</sup>	looked after	all children <sup>2</sup>	ratio QP7 <sup>3</sup>	looked after	all children <sup>2</sup>	ratio QP7 <sup>3</sup>
<b>MERSEYSIDE</b>	<b>132</b>	<b>17</b>	<b>59</b>	<b>0.3</b>	<b>14</b>	<b>60</b>	<b>0.2</b>	<b>15</b>	<b>54</b>	<b>0.3</b>
Knowsley	21	19	43	0.4	19	49	0.4	24	41	0.6
Liverpool	64	17	55	0.3	13	54	0.2	9	47	0.2
Sefton	22	14	69	0.2	27	71	0.4	23	63	0.4
St Helens	12	75	64	1.2	75	63	1.2	83	58	1.4
Wirral	13	8	63	0.1	8	65	0.1	8	60	0.1
<b>YORKS &amp; THE HUMBER</b>	<b>366</b>	<b>16</b>	<b>60</b>	<b>0.3</b>	<b>13</b>	<b>61</b>	<b>0.2</b>	<b>14</b>	<b>56</b>	<b>0.3</b>
North Yorkshire	13	38	72	0.5	31	75	0.4	31	73	0.4
East Riding Of Yorkshire	12	42	69	0.6	33	70	0.5	33	66	0.5
Kingston Upon Hull	36	11	50	0.2	6	48	0.1	11	40	0.3
North East Lincolnshire	20	10	57	0.2	15	57	0.3	20	52	0.4
North Lincolnshire	9	67	61	1.1	22	63	0.4	11	58	0.2
York	9	22	69	0.3	-	69	-	11	66	0.2
Barnsley	18	11	53	0.2	6	56	0.1	6	51	0.1
Bradford	54	11	55	0.2	13	54	0.2	13	47	0.3
Calderdale	11	27	63	0.4	18	64	0.3	18	56	0.3
Doncaster	20	10	55	0.2	5	59	0.1	5	55	0.1
Kirklees	12	33	64	0.5	33	63	0.5	33	57	0.6
Leeds	63	14	59	0.2	13	61	0.2	17	55	0.3
Rotherham	18	6	57	0.1	-	58	-	11	54	0.2
Sheffield	40	13	57	0.2	13	59	0.2	13	54	0.2
Wakefield	31	10	58	0.2	13	61	0.2	6	55	0.1
<b>EAST MIDLANDS</b>	<b>202</b>	<b>17</b>	<b>62</b>	<b>0.3</b>	<b>20</b>	<b>66</b>	<b>0.3</b>	<b>19</b>	<b>61</b>	<b>0.3</b>
Derbyshire	44	23	65	0.3	23	69	0.3	18	65	0.3
Leicestershire	12	33	71	0.5	25	74	0.3	25	71	0.4
Lincolnshire	25	16	67	0.2	8	70	0.1	12	67	0.2
Northamptonshire	39	5	62	0.1	5	67	0.1	8	63	0.1
Nottinghamshire	31	19	58	0.3	32	64	0.5	26	58	0.4
Derby	17	24	57	0.4	41	60	0.7	47	54	0.9
Leicester	16	6	55	0.1	6	58	0.1	6	48	0.1
Nottingham	18	22	41	0.5	33	42	0.8	28	37	0.8
Rutland	-	-	78	-	-	78	-	-	72	-



**Table 4 Eligibility and performance of looked after children in Key Stage 3 tasks and tests, compared to all children**

Local Authority	number looked after in Year 9 old enough to sit Key Stage 3 tasks and tests	percentage attaining level 5 <sup>1</sup> or above in each task or test								
		English			Mathematics			Science		
		looked after	all children <sup>2</sup>	ratio QP7 <sup>3</sup>	looked after	all children <sup>2</sup>	ratio QP7 <sup>3</sup>	looked after	all children <sup>2</sup>	ratio QP7 <sup>3</sup>
<b>WEST MIDLANDS</b>	<b>402</b>	<b>17</b>	<b>63</b>	<b>0.3</b>	<b>16</b>	<b>62</b>	<b>0.3</b>	<b>15</b>	<b>57</b>	<b>0.3</b>
Shropshire	12	42	71	0.6	42	72	0.6	33	69	0.5
Staffordshire	..	..	66	..	..	68	..	..	64	..
Warwickshire	23	13	66	0.2	17	67	0.3	22	63	0.3
Worcestershire	44	16	68	0.2	11	67	0.2	14	64	0.2
Herefordshire	15	13	73	0.2	13	73	0.2	7	70	0.1
Stoke-On-Trent	26	4	55	0.1	8	55	0.1	4	49	0.1
Telford & Wrekin	9	-	63	-	-	64	-	-	59	-
Birmingham	124	19	57	0.3	15	54	0.3	17	48	0.4
Coventry	25	16	59	0.3	16	61	0.3	8	53	0.1
Dudley	23	13	66	0.2	17	66	0.3	9	61	0.1
Sandwell	21	10	52	0.2	5	49	0.1	19	40	0.5
Solihull	5	40	75	0.5	20	72	0.3	40	68	0.6
Walsall	17	35	59	0.6	35	59	0.6	24	53	0.4
Wolverhampton	26	23	58	0.4	23	55	0.4	15	49	0.3
<b>SOUTH WEST</b>	<b>292</b>	<b>24</b>	<b>66</b>	<b>0.4</b>	<b>29</b>	<b>68</b>	<b>0.4</b>	<b>24</b>	<b>64</b>	<b>0.4</b>
Cornwall	29	21	68	0.3	28	69	0.4	17	66	0.3
Devon	59	20	62	0.3	20	67	0.3	15	63	0.2
Dorset	17	24	70	0.3	18	72	0.2	24	70	0.3
Gloucestershire	26	19	69	0.3	23	72	0.3	15	68	0.2
Isles Of Scilly	-	-	81	-	-	81	-	-	74	-
Somerset	23	22	64	0.3	39	69	0.6	39	66	0.6
Wiltshire	13	38	67	0.6	54	71	0.8	38	68	0.6
Bath & North East Somerset	12	42	73	0.6	42	73	0.6	25	68	0.4
Bournemouth	13	15	69	0.2	31	69	0.4	31	64	0.5
Bristol	23	22	45	0.5	35	49	0.7	17	43	0.4
North Somerset	8	38	70	0.5	25	71	0.4	38	68	0.5
Plymouth	33	12	60	0.2	18	64	0.3	12	56	0.2
Poole	8	50	78	0.6	50	73	0.7	63	72	0.9
South Gloucestershire	5	40	67	0.6	20	70	0.3	40	66	0.6
Swindon	13	31	65	0.5	38	63	0.6	31	58	0.5
Torbay	10	40	71	0.6	60	67	0.9	60	66	0.9

**Table 4 Eligibility and performance of looked after children in Key Stage 3 tasks and tests, compared to all children**

Local Authority	number looked after in Year 9 old enough to sit Key Stage 3 tasks and tests	percentage attaining level 5 <sup>1</sup> or above in each task or test								
		English			Mathematics			Science		
		looked after	all children <sup>2</sup>	ratio QP7 <sup>3</sup>	looked after	all children <sup>2</sup>	ratio QP7 <sup>3</sup>	looked after	all children <sup>2</sup>	ratio QP7 <sup>3</sup>
<b>LONDON</b>	<b>649</b>	<b>20</b>	<b>60</b>	<b>0.3</b>	<b>20</b>	<b>59</b>	<b>0.3</b>	<b>18</b>	<b>51</b>	<b>0.4</b>
Camden	15	13	64	0.2	7	59	0.1	7	55	0.1
City Of London	-	-	-	-	-	-	-	-	-	-
Greenwich	28	25	50	0.5	36	48	0.7	32	38	0.9
Hackney	34	12	46	0.3	12	40	0.3	6	30	0.2
Hammersmith & Fulham	37	22	60	0.4	24	57	0.4	16	49	0.3
Islington	27	-	43	-	-	42	-	4	36	0.1
Kensington & Chelsea	13	23	65	0.4	23	61	0.4	31	57	0.5
Lambeth	..	..	53	..	..	46	..	..	40	..
Lewisham	33	21	50	0.4	18	48	0.4	18	40	0.5
Southwark	30	17	40	0.4	17	42	0.4	13	32	0.4
Tower Hamlets	20	25	46	0.5	25	43	0.6	15	31	0.5
Wandsworth	20	15	57	0.3	20	55	0.4	15	48	0.3
Westminster	14	21	55	0.4	-	58	-	7	47	0.2
Barking & Dagenham	22	14	54	0.3	14	54	0.3	5	50	0.1
Barnet	15	53	74	0.7	47	71	0.7	53	64	0.8
Bexley	5	40	70	0.6	20	67	0.3	40	57	0.7
Brent	15	-	57	-	13	59	0.2	7	48	0.1
Bromley	13	15	73	0.2	23	74	0.3	23	68	0.3
Croydon	11	9	62	0.1	9	62	0.1	9	54	0.2
Ealing†	53	4	57	0.1	13	57	0.2	9	46	0.2
Enfield	20	20	62	0.3	10	61	0.2	5	49	0.1
Haringey	21	5	51	0.1	5	45	0.1	-	38	-
Harrow	6	50	65	0.8	33	68	0.5	33	58	0.6
Havering	7	14	71	0.2	-	72	-	-	64	-
Hillingdon	50	42	66	0.6	36	64	0.6	38	58	0.7
Hounslow	19	5	67	0.1	11	62	0.2	11	53	0.2
Kingston Upon Thames	10	20	70	0.3	30	74	0.4	20	70	0.3
Merton	14	21	53	0.4	36	56	0.6	29	43	0.7
Newham	19	42	45	0.9	32	44	0.7	21	35	0.6
Redbridge	6	67	70	0.9	67	70	1.0	67	61	1.1
Richmond Upon Thames	3	-	69	-	-	66	-	-	63	-
Sutton	9	-	79	-	-	75	-	-	72	-
Waltham Forest	17	53	55	1.0	53	54	1.0	53	48	1.1

**Table 4 Eligibility and performance of looked after children in Key Stage 3 tasks and tests, compared to all children**

Local Authority	number looked after in Year 9 old enough to sit Key Stage 3 tasks and tests	percentage attaining level 5 <sup>1</sup> or above in each task or test								
		English			Mathematics			Science		
		looked after	all children <sup>2</sup>	ratio QP7 <sup>3</sup>	looked after	all children <sup>2</sup>	ratio QP7 <sup>3</sup>	looked after	all children <sup>2</sup>	ratio QP7 <sup>3</sup>
<b>EAST OF ENGLAND</b>	<b>303</b>	<b>19</b>	<b>66</b>	<b>0.3</b>	<b>24</b>	<b>69</b>	<b>0.3</b>	<b>25</b>	<b>64</b>	<b>0.4</b>
Bedfordshire	32	25	66	0.4	19	70	0.3	22	65	0.3
Cambridgeshire	28	7	68	0.1	21	71	0.3	11	67	0.2
Essex†	68	25	65	0.4	18	69	0.3	19	64	0.3
Hertfordshire	50	30	71	0.4	46	74	0.6	52	68	0.8
Norfolk	43	23	63	0.4	23	68	0.3	16	64	0.3
Suffolk	30	7	65	0.1	13	69	0.2	20	66	0.3
Luton	12	-	57	-	17	58	0.3	17	48	0.3
Peterborough	22	5	57	0.1	14	61	0.2	18	54	0.3
Southend	12	17	67	0.3	33	69	0.5	33	65	0.5
Thurrock	6	33	53	0.6	33	61	0.5	50	52	1.0
<b>SOUTH EAST</b>	<b>448</b>	<b>19</b>	<b>67</b>	<b>0.3</b>	<b>20</b>	<b>69</b>	<b>0.3</b>	<b>16</b>	<b>64</b>	<b>0.3</b>
Buckinghamshire	38	16	74	0.2	16	77	0.2	16	71	0.2
East Sussex	27	19	63	0.3	15	67	0.2	11	62	0.2
Hampshire	49	27	69	0.4	24	71	0.3	16	67	0.2
Kent	..	..	66	..	..	69	..	..	64	..
Oxfordshire	33	15	65	0.2	15	69	0.2	9	65	0.1
Surrey	42	26	75	0.4	26	75	0.4	17	70	0.2
West Sussex†	42	21	68	0.3	19	69	0.3	19	66	0.3
Bracknell Forest	3	-	71	-	-	70	-	-	64	-
Brighton & Hove	19	16	57	0.3	-	62	-	5	53	0.1
Isle Of Wight	10	10	60	0.2	20	62	0.3	10	58	0.2
Medway Towns	23	22	64	0.3	26	67	0.4	26	60	0.4
Milton Keynes	20	30	63	0.5	30	60	0.5	25	52	0.5
Portsmouth	13	23	49	0.5	38	53	0.7	38	48	0.8
Reading	8	13	63	0.2	38	61	0.6	25	53	0.5
Slough	8	-	63	-	13	61	0.2	-	53	-
Southampton	18	11	54	0.2	17	57	0.3	11	52	0.2
West Berkshire	8	-	73	-	25	72	0.3	13	69	0.2
Windsor & Maidenhead	1	-	76	-	-	72	-	-	70	-
Wokingham	8	-	78	-	13	78	0.2	13	71	0.2

1 target level for age group

2 source: DfEE statistical first release 'National curriculum assessments of 7, 11 and 14 year olds by Local Education Authority, 2000' (please note - these figures are provisional and refer to LEA maintained schools only)

3 QP Indicator 7, defined as: The proportion of looked after children attaining the target levels or better in each of the tested subjects in the National Curriculum Assessments tests, expressed as a ratio of the proportion of all children at that stage attaining the target level or better in the authority

**Table 5 GCSE performance of looked after children compared with all children, year ending 30 September 2000**

Local Authority	number looked after in Year 11 old enough to sit GCSE or GNVQ exams	% who sat one of these exams	percentage obtaining at least:								
			1 GCSE			5 GCSE's at grade A* to G			5 GCSE's at grade A* to C		
			at grade A* to G or a GNVQ	looked after	all children <sup>1</sup>	ratio	looked after	all children <sup>1</sup>	ratio	looked after	all children <sup>1</sup>
<b>ENGLAND</b>	<b>3,900</b>	<b>53.5</b>	<b>49.2</b>	<b>94.4</b>	<b>0.5</b>	<b>35.5</b>	<b>88.9</b>	<b>0.4</b>	<b>7.3</b>	<b>49.2</b>	<b>0.1</b>
<b>NORTH EAST</b>	<b>214</b>	<b>61.7</b>	<b>56.5</b>	<b>93.6</b>	<b>0.6</b>	<b>44.4</b>	<b>88.0</b>	<b>0.5</b>	<b>6.1</b>	<b>41.6</b>	<b>0.1</b>
Durham	33	66.7	66.7	93.8	0.7	54.5	86.8	0.6	3.0	40.3	0.1
Northumberland	21	52.4	52.4	94.8	0.6	38.1	90.6	0.4	9.5	49.6	0.2
Darlington	8	62.5	62.5	95.6	0.7	50.0	89.8	0.6	12.5	45.0	0.3
Hartlepool	2	50.0	50.0	93.2	0.5	-	86.1	-	-	35.7	-
Middlesbrough	12	33.3	33.3	90.4	0.4	25.0	83.4	0.3	-	34.6	-
Redcar & Cleveland	16	37.5	12.5	94.3	0.1	12.5	89.9	0.1	-	45.6	-
Stockton On Tees	7	71.4	71.4	95.5	0.7	57.1	90.3	0.6	-	43.7	-
Gateshead	21	71.4	52.4	91.6	0.6	47.6	86.3	0.6	4.8	45.0	0.1
Newcastle Upon Tyne	34	50.0	50.0	89.0	0.6	35.3	82.2	0.4	2.9	35.0	0.1
North Tyneside	19	89.5	89.5	94.4	0.9	73.7	91.8	0.8	10.5	45.2	0.2
South Tyneside	14	71.4	64.3	94.6	0.7	50.0	89.3	0.6	14.3	39.3	0.4
Sunderland	27	70.4	63.0	95.2	0.7	48.1	89.6	0.5	11.1	38.4	0.3
<b>NORTH WEST<sup>3</sup></b>	<b>432</b>	<b>43.8</b>	<b>43.1</b>	<b>..</b>	<b>..</b>	<b>32.4</b>	<b>..</b>	<b>..</b>	<b>5.8</b>	<b>..</b>	<b>..</b>
Cheshire	33	51.5	48.5	96.6	0.5	39.4	93.6	0.4	12.1	57.0	0.2
Cumbria	24	33.3	33.3	95.7	0.3	20.8	91.1	0.2	8.3	50.6	0.2
Lancashire	90	37.8	36.7	95.7	0.4	28.9	91.3	0.3	4.4	49.6	0.1
Blackburn With Darwen	14	50.0	50.0	93.3	0.5	28.6	88.4	0.3	-	40.0	-
Blackpool	15	26.7	26.7	93.7	0.3	-	85.3	-	-	36.1	-
Halton	7	85.7	85.7	96.3	0.9	71.4	91.0	0.8	-	37.7	-
Warrington	7	57.1	57.1	97.3	0.6	28.6	93.7	0.3	-	50.5	-
Bolton	20	55.0	55.0	94.7	0.6	55.0	89.2	0.6	15.0	41.3	0.4
Bury	8	37.5	37.5	97.8	0.4	12.5	93.9	0.1	12.5	53.0	0.2
Manchester	80	32.5	32.5	92.7	0.4	27.5	83.3	0.3	6.3	30.3	0.2
Oldham	18	72.2	72.2	94.1	0.8	66.7	89.3	0.7	11.1	42.4	0.3
Rochdale	12	33.3	33.3	92.6	0.4	25.0	85.3	0.3	-	37.9	-
Salford	31	35.5	35.5	95.6	0.4	32.3	89.9	0.4	3.2	35.5	0.1
Stockport	21	47.6	42.9	94.2	0.5	33.3	90.9	0.4	4.8	51.7	0.1
Tameside	24	58.3	58.3	96.1	0.6	37.5	90.9	0.4	4.2	42.1	0.1
Trafford	8	62.5	62.5	96.6	0.6	37.5	91.5	0.4	12.5	56.4	0.2
Wigan	20	60.0	60.0	94.7	0.6	35.0	90.4	0.4	-	46.7	-

**Table 5 GCSE performance of looked after children compared with all children, year ending 30 September 2000**

Local Authority	number looked after in Year 11 old enough to sit GCSE or GNVQ exams	% who sat one of these exams	percentage obtaining at least:								
			1 GCSE			5 GCSE's at grade A* to G			5 GCSE's at grade A* to C		
			at grade A* to G or a GNVQ	looked after	all children <sup>1</sup>	ratio	looked after	all children <sup>1</sup>	ratio	looked after	all children <sup>1</sup>
<b>MERSEYSIDE<sup>3</sup></b>	<b>136</b>	<b>51.0</b>	<b>44.9</b>	<b>..</b>	<b>..</b>	<b>31.6</b>	<b>..</b>	<b>..</b>	<b>8.1</b>	<b>..</b>	<b>..</b>
Knowsley	20	30.0	25.0	88.7	0.3	10.0	78.3	0.1	10.0	25.0	0.4
Liverpool	62	33.9	33.9	91.9	0.4	22.6	82.3	0.3	3.2	35.3	0.1
Sefton	20	60.0	60.0	95.2	0.6	40.0	91.6	0.4	10.0	48.4	0.2
St Helens	17	76.5	64.7	92.4	0.7	52.9	89.0	0.6	17.6	47.4	0.4
Wirral	17	100.0	70.6	93.9	0.8	58.8	87.3	0.7	11.8	48.7	0.2
<b>YORKS &amp; THE HUMBER</b>	<b>373</b>	<b>55.5</b>	<b>52.8</b>	<b>93.4</b>	<b>0.6</b>	<b>38.6</b>	<b>87.6</b>	<b>0.4</b>	<b>6.7</b>	<b>42.2</b>	<b>0.2</b>
North Yorkshire	21	71.4	71.4	97.2	0.7	66.7	93.3	0.7	19.0	59.3	0.3
East Riding Of Yorkshire	8	62.5	62.5	95.3	0.7	50.0	91.3	0.5	-	49.9	-
Kingston Upon Hull	32	75.0	62.5	89.5	0.7	53.1	77.8	0.7	9.4	24.4	0.4
North East Lincolnshire	14	50.0	35.7	93.3	0.4	14.3	87.0	0.2	-	35.8	-
North Lincolnshire	15	60.0	60.0	97.0	0.6	46.7	91.5	0.5	6.7	43.8	0.2
York	7	71.4	71.4	95.6	0.7	42.9	90.5	0.5	28.6	52.6	0.5
Barnsley	17	41.2	35.3	92.8	0.4	23.5	85.1	0.3	-	34.9	-
Bradford	43	44.2	41.9	91.6	0.5	23.3	84.4	0.3	7.0	33.8	0.2
Calderdale	19	68.4	63.2	94.7	0.7	47.4	87.8	0.5	-	43.6	-
Doncaster	23	34.8	34.8	91.4	0.4	13.0	86.2	0.2	4.3	36.8	0.1
Kirklees	29	69.0	69.0	93.7	0.7	44.8	88.7	0.5	20.7	43.8	0.5
Leeds	66	60.6	60.6	91.7	0.7	47.0	85.7	0.5	4.5	40.4	0.1
Rotherham	15	60.0	53.3	94.6	0.6	40.0	88.7	0.5	6.7	41.1	0.2
Sheffield	31	25.8	25.8	91.5	0.3	19.4	86.2	0.2	-	41.1	-
Wakefield	33	54.5	54.5	95.3	0.6	45.5	90.2	0.5	3.0	43.2	0.1
<b>EAST MIDLANDS</b>	<b>243</b>	<b>57.2</b>	<b>48.6</b>	<b>94.5</b>	<b>0.5</b>	<b>35.0</b>	<b>88.9</b>	<b>0.4</b>	<b>6.2</b>	<b>46.0</b>	<b>0.1</b>
Derbyshire	44	61.4	61.4	96.0	0.6	50.0	91.9	0.5	9.1	49.9	0.2
Leicestershire	18	72.2	55.6	95.4	0.6	50.0	90.5	0.6	-	48.5	-
Lincolnshire	38	28.9	28.9	95.1	0.3	18.4	90.8	0.2	2.6	52.6	0.1
Northamptonshire	45	46.7	46.7	94.3	0.5	28.9	89.7	0.3	6.7	47.8	0.1
Nottinghamshire	29	65.5	62.1	94.5	0.7	44.8	88.6	0.5	17.2	44.3	0.4
Derby	27	74.1	63.0	93.5	0.7	48.1	88.0	0.5	3.7	41.3	0.1
Leicester	14	92.9	35.7	92.8	0.4	14.3	82.6	0.2	-	34.1	-
Nottingham	27	55.6	33.3	89.0	0.4	22.2	78.2	0.3	3.7	28.7	0.1
Rutland	1	-	-	99.5	-	-	96.8	-	-	61.6	-

**Table 5 GCSE performance of looked after children compared with all children, year ending 30 September 2000**

Local Authority	number looked after in Year 11 old enough to sit GCSE or GNVQ exams	% who sat one of these exams	percentage obtaining at least:								
			1 GCSE			5 GCSE's at grade A* to G			5 GCSE's at grade A* to C		
			at grade A* to G or a GNVQ	looked after	all children <sup>1</sup>	ratio	looked after	all children <sup>1</sup>	ratio	looked after	all children <sup>1</sup>
<b>WEST MIDLANDS</b>	<b>437</b>	<b>54.2</b>	<b>50.2</b>	<b>94.7</b>	<b>0.5</b>	<b>33.4</b>	<b>89.0</b>	<b>0.4</b>	<b>5.9</b>	<b>44.8</b>	<b>0.1</b>
Shropshire	11	100.0	90.9	97.0	0.9	72.7	93.2	0.8	45.5	56.4	0.8
Staffordshire	..	..	..	95.7	..	..	91.7	..	..	48.1	..
Warwickshire	35	68.6	65.7	95.2	0.7	45.7	91.1	0.5	8.6	49.5	0.2
Worcestershire	43	53.5	53.5	94.2	0.6	37.2	89.0	0.4	4.7	48.2	0.1
Herefordshire	16	81.3	81.3	96.2	0.8	62.5	91.9	0.7	12.5	53.4	0.2
Stoke-On-Trent	27	37.0	37.0	93.9	0.4	22.2	86.8	0.3	-	33.8	-
Telford & Wrekin	15	26.7	26.7	94.8	0.3	13.3	90.5	0.1	-	48.1	-
Birmingham	128	46.9	43.0	94.2	0.5	27.3	86.7	0.3	3.1	40.8	0.1
Coventry	29	48.3	48.3	92.5	0.5	37.9	85.1	0.4	6.9	40.8	0.2
Dudley	12	75.0	75.0	96.4	0.8	41.7	92.0	0.5	-	48.4	-
Sandwell	36	..	27.8	92.1	0.3	22.2	84.9	0.3	2.8	31.7	0.1
Solihull	12	41.7	41.7	96.5	0.4	25.0	92.2	0.3	8.3	55.1	0.2
Walsall	15	73.3	73.3	93.3	0.8	33.3	82.9	0.4	6.7	37.0	0.2
Wolverhampton	21	66.7	66.7	94.2	0.7	38.1	89.4	0.4	9.5	38.7	0.2
<b>SOUTH WEST</b>	<b>321</b>	<b>61.7</b>	<b>60.4</b>	<b>95.7</b>	<b>0.6</b>	<b>45.5</b>	<b>91.3</b>	<b>0.5</b>	<b>10.3</b>	<b>51.4</b>	<b>0.2</b>
Cornwall	33	57.6	57.6	96.7	0.6	42.4	92.4	0.5	9.1	52.6	0.2
Devon	44	50.0	50.0	96.2	0.5	38.6	91.2	0.4	6.8	49.1	0.1
Dorset	26	65.4	65.4	95.6	0.7	46.2	93.1	0.5	11.5	54.6	0.2
Gloucestershire	29	41.4	37.9	97.0	0.4	24.1	93.3	0.3	6.9	56.9	0.1
Isles Of Scilly	-	-	-	100.0	-	-	100.0	-	-	76.9	-
Somerset	25	60.0	60.0	96.8	0.6	48.0	93.4	0.5	16.0	55.3	0.3
Wiltshire	16	68.8	68.8	95.6	0.7	62.5	91.9	0.7	6.3	55.5	0.1
Bath & North East Somerset	13	84.6	84.6	96.9	0.9	53.8	93.1	0.6	-	57.1	-
Bournemouth	8	75.0	62.5	94.4	0.7	37.5	88.6	0.4	25.0	48.1	0.5
Bristol	52	48.1	48.1	89.6	0.5	32.7	81.1	0.4	3.8	31.2	0.1
North Somerset	9	33.3	33.3	96.2	0.3	11.1	91.8	0.1	-	53.4	-
Plymouth	22	90.9	90.9	95.7	0.9	86.4	91.0	0.9	27.3	47.5	0.6
Poole	5	80.0	60.0	96.9	0.6	40.0	91.4	0.4	20.0	59.5	0.3
South Gloucestershire	12	83.3	83.3	96.2	0.9	58.3	92.9	0.6	25.0	47.7	0.5
Swindon	13	92.3	84.6	93.9	0.9	53.8	87.4	0.6	-	44.1	-
Torbay	14	78.6	78.6	94.5	0.8	78.6	90.0	0.9	21.4	50.3	0.4

**Table 5 GCSE performance of looked after children compared with all children, year ending 30 September 2000**

Local Authority	number looked after in Year 11 old enough to sit GCSE or GNVQ exams	% who sat one of these exams	percentage obtaining at least:								
			1 GCSE at grade A* to G or a GNVQ			5 GCSE's at grade A* to G			5 GCSE's at grade A* to C		
			looked after	all children <sup>1</sup>	ratio	looked after	all children <sup>1</sup>	ratio	looked after	all children <sup>1</sup>	ratio QP8 <sup>2</sup>
<b>LONDON</b>	<b>864</b>	<b>49.2</b>	<b>42.0</b>	<b>94.9</b>	<b>0.4</b>	<b>28.6</b>	<b>89.6</b>	<b>0.3</b>	<b>6.8</b>	<b>45.5</b>	<b>0.1</b>
Camden	24	37.5	37.5	94.1	0.4	20.8	89.4	0.2	-	51.0	-
City Of London	-	-	-	..	..	-	..	..	-	..	..
Greenwich	44	56.8	11.4	93.1	0.1	9.1	83.9	0.1	6.8	32.4	0.2
Hackney	37	51.4	24.3	93.2	0.3	16.2	79.3	0.2	5.4	32.2	0.2
Hammersmith & Fulham	47	53.2	53.2	99.4	0.5	29.8	91.1	0.3	10.6	49.8	0.2
Islington	69	46.4	44.9	91.7	0.5	23.2	81.4	0.3	4.3	26.5	0.2
Kensington & Chelsea	26	50.0	42.3	89.2	0.5	30.8	82.6	0.4	7.7	47.9	0.2
Lambeth	..	..	..	97.0	..	..	85.1	..	..	31.7	..
Lewisham	37	48.6	45.9	94.0	0.5	35.1	85.1	0.4	8.1	34.8	0.2
Southwark	58	44.8	37.9	98.0	0.4	10.3	86.3	0.1	3.4	32.1	0.1
Tower Hamlets	16	25.0	25.0	97.5	0.3	12.5	89.6	0.1	-	32.7	-
Wandsworth	28	64.3	50.0	97.0	0.5	46.4	86.5	0.5	10.7	41.6	0.3
Westminster	21	76.2	66.7	94.7	0.7	52.4	84.0	0.6	14.3	36.7	0.4
Barking & Dagenham	17	35.3	29.4	97.0	0.3	17.6	91.6	0.2	-	38.3	-
Barnet	14	57.1	57.1	95.2	0.6	35.7	91.1	0.4	14.3	57.5	0.2
Bexley	10	60.0	60.0	95.5	0.6	40.0	92.6	0.4	20.0	49.7	0.4
Brent	15	73.3	66.7	96.2	0.7	33.3	90.1	0.4	26.7	47.3	0.6
Bromley	25	48.0	48.0	96.6	0.5	32.0	93.8	0.3	-	59.4	-
Croydon	24	41.7	41.7	96.8	0.4	29.2	91.4	0.3	4.2	42.6	0.1
Ealing†	46	47.8	30.4	98.5	0.3	26.1	93.2	0.3	10.9	46.1	0.2
Enfield	34	41.2	41.2	97.1	0.4	32.4	91.7	0.4	2.9	46.1	0.1
Haringey	30	43.3	43.3	93.0	0.5	30.0	81.0	0.4	3.3	30.3	0.1
Harrow	13	46.2	38.5	96.7	0.4	23.1	91.9	0.3	15.4	57.2	0.3
Havering	5	40.0	40.0	96.2	0.4	40.0	92.6	0.4	-	55.9	-
Hillingdon	61	47.5	47.5	95.2	0.5	44.3	89.8	0.5	4.9	47.9	0.1
Hounslow	16	50.0	50.0	95.8	0.5	31.3	88.3	0.4	-	46.5	-
Kingston Upon Thames	11	54.5	54.5	93.1	0.6	45.5	88.4	0.5	-	61.3	-
Merton	14	35.7	35.7	92.6	0.4	28.6	85.8	0.3	14.3	40.5	0.4
Newham	23	60.9	60.9	100.0	0.6	43.5	93.2	0.5	4.3	36.3	0.1
Redbridge	8	62.5	37.5	99.2	0.4	37.5	95.7	0.4	12.5	59.6	0.2
Richmond Upon Thames	8	25.0	25.0	95.6	0.3	12.5	92.2	0.1	-	51.1	-
Sutton	12	66.7	66.7	96.5	0.7	41.7	94.1	0.4	8.3	63.4	0.1
Waltham Forest	22	31.8	18.2	93.5	0.2	13.6	87.9	0.2	13.6	39.7	0.3

**Table 5 GCSE performance of looked after children compared with all children, year ending 30 September 2000**

Local Authority	number looked after in Year 11 old enough to sit GCSE or GNVQ exams	% who sat one of these exams	percentage obtaining at least:								
			1 GCSE			5 GCSE's at grade A* to G			5 GCSE's at grade A* to C		
			at grade A* to G or a GNVQ	looked after	all children <sup>1</sup>	ratio	looked after	all children <sup>1</sup>	ratio	looked after	all children <sup>1</sup>
<b>EAST OF ENGLAND</b>	<b>349</b>	<b>54.7</b>	<b>50.7</b>	<b>95.5</b>	<b>0.5</b>	<b>37.2</b>	<b>91.0</b>	<b>0.4</b>	<b>8.6</b>	<b>50.7</b>	<b>0.2</b>
Bedfordshire	17	52.9	35.3	95.2	0.4	23.5	90.5	0.3	-	49.4	-
Cambridgeshire	41	87.8	68.3	94.9	0.7	46.3	89.9	0.5	9.8	51.7	0.2
Essex†	82	57.3	56.1	95.9	0.6	41.5	91.9	0.5	8.5	50.8	0.2
Hertfordshire	47	48.9	48.9	95.8	0.5	29.8	91.2	0.3	8.5	55.4	0.2
Norfolk	36	50.0	50.0	95.0	0.5	38.9	90.0	0.4	8.3	48.2	0.2
Suffolk	61	36.1	36.1	96.2	0.4	29.5	92.7	0.3	11.5	53.3	0.2
Luton	15	73.3	60.0	96.8	0.6	60.0	91.4	0.7	-	39.7	-
Peterborough	18	66.7	66.7	94.0	0.7	50.0	88.6	0.6	11.1	41.8	0.3
Southend	21	47.6	47.6	94.6	0.5	33.3	88.9	0.4	9.5	53.3	0.2
Thurrock	11	27.3	27.3	93.7	0.3	18.2	87.8	0.2	9.1	39.7	0.2
<b>SOUTH EAST</b>	<b>487</b>	<b>56.7</b>	<b>53.7</b>	<b>95.5</b>	<b>0.6</b>	<b>39.3</b>	<b>91.4</b>	<b>0.4</b>	<b>9.6</b>	<b>52.1</b>	<b>0.2</b>
Buckinghamshire	19	42.1	42.1	95.8	0.4	42.1	92.0	0.5	10.5	61.6	0.2
East Sussex	26	61.5	53.8	96.1	0.6	34.6	91.8	0.4	7.7	51.0	0.2
Hampshire	69	60.9	60.9	96.4	0.6	40.6	93.0	0.4	13.0	54.9	0.2
Kent	..	..	..	95.9	..	..	91.0	..	..	51.3	..
Oxfordshire	23	52.2	52.2	94.8	0.6	30.4	90.2	0.3	8.7	50.3	0.2
Surrey	55	70.9	65.5	95.7	0.7	54.5	92.8	0.6	16.4	57.6	0.3
West Sussex†	43	58.1	58.1	96.1	0.6	44.2	92.5	0.5	14.0	54.5	0.3
Bracknell Forest	8	50.0	50.0	96.1	0.5	50.0	94.5	0.5	12.5	46.6	0.3
Brighton & Hove	25	56.0	56.0	93.1	0.6	40.0	85.4	0.5	-	43.7	-
Isle Of Wight	5	40.0	40.0	94.0	0.4	40.0	88.8	0.5	20.0	44.8	0.4
Medway Towns	23	47.8	43.5	95.1	0.5	39.1	90.7	0.4	8.7	43.7	0.2
Milton Keynes	21	61.9	47.6	93.6	0.5	28.6	89.0	0.3	4.8	41.0	0.1
Portsmouth	19	63.2	57.9	92.5	0.6	42.1	85.1	0.5	-	34.0	-
Reading	7	57.1	57.1	89.6	0.6	42.9	84.3	0.5	-	45.7	-
Slough	15	33.3	33.3	95.8	0.3	13.3	91.1	0.1	-	51.3	-
Southampton	20	50.0	45.0	94.8	0.5	25.0	89.6	0.3	5.0	39.8	0.1
West Berkshire	5	80.0	80.0	96.2	0.8	80.0	93.8	0.9	-	56.0	-
Windsor & Maidenhead	6	33.3	33.3	97.6	0.3	16.7	94.0	0.2	-	59.2	-
Wokingham	8	62.5	62.5	96.3	0.6	50.0	92.7	0.5	37.5	59.9	0.6

1 source: DfEE statistical first release 'GCSE/GNVQ and GCE A/AS/Advanced GNVQ results for young people in England, 1999/2000 (Provisional)'

2 QP Indicator 8, defined as: The proportion of looked after children obtaining at least 5 GCSE's at grades A\*-C during the most recent school year, as a ratio of the proportion of all children in the local authority achieving these standards

3 these figures are not available for 'all children', as DfEE present figures for the North West inclusive of Merseyside



**Table 6 Education and employment status at 30 September 2000 of looked after children in Year 11 in 1999/2000 school year**

Local Authority	total number of looked after children in Year 11 in 1999/2000 school year	position of looked after children at 30 September 2000, shown as a percentage of total <sup>1</sup>						
		in full-time education	in full-time training	in full-time employment with planned training	in full-time employment with no planned training	in part-time employment, education, or training	unemployed as a result of ill-health or disability	unemployed for other reason
<b>ENGLAND</b>	<b>3,900</b>	<b>52</b>	<b>8</b>	<b>4</b>	<b>4</b>	<b>6</b>	<b>2</b>	<b>23</b>
<b>NORTH EAST</b>	<b>216</b>	<b>49</b>	<b>7</b>	<b>8</b>	<b>2</b>	<b>8</b>	<b>2</b>	<b>24</b>
Durham	33	79	-	-	-	9	-	12
Northumberland	21	48	-	5	-	14	10	24
Darlington	8	38	-	13	13	13	-	25
Hartlepool	2	100	-	-	-	-	-	-
Middlesbrough	12	17	25	-	8	8	17	25
Redcar & Cleveland	17	35	6	24	-	12	-	24
Stockton On Tees	8	63	13	-	13	-	-	13
Gateshead	21	62	5	10	-	5	-	19
Newcastle Upon Tyne	34	24	6	18	-	9	-	44
North Tyneside	19	47	16	11	5	16	-	5
South Tyneside	14	43	14	7	-	-	7	29
Sunderland	27	56	7	4	-	4	-	30
<b>NORTH WEST</b>	<b>429</b>	<b>45</b>	<b>9</b>	<b>4</b>	<b>4</b>	<b>6</b>	<b>2</b>	<b>29</b>
Cheshire	33	58	15	3	6	6	-	12
Cumbria	24	42	21	-	-	-	13	25
Lancashire	90	57	11	9	1	4	1	17
Blackburn With Darwen	14	57	7	-	7	-	-	29
Blackpool	15	33	7	-	7	-	-	53
Halton	7	71	-	14	14	-	-	-
Warrington	7	14	-	-	14	-	-	71
Bolton	20	65	5	-	5	-	-	25
Bury	8	38	13	-	-	-	13	38
Manchester	80	39	5	-	3	11	-	43
Oldham	18	56	11	22	-	6	-	6
Rochdale	12	17	8	-	-	-	-	75
Salford	31	32	6	6	6	13	3	32
Stockport	20	45	10	-	5	10	15	15
Tameside	22	45	5	-	14	-	-	36
Trafford	8	25	-	-	13	13	13	38
Wigan	20	30	15	-	10	5	-	40

**Table 6 Education and employment status at 30 September 2000 of looked after children in Year 11 in 1999/2000 school year**

Local Authority	total number of looked after children in Year 11 in 1999/2000 school year	position of looked after children at 30 September 2000, shown as a percentage of total <sup>1</sup>						
		in full-time education	in full-time training	in full-time employment with planned training	in full-time employment with no planned training	in part-time employment, education, or training	unemployed as a result of ill-health or disability	unemployed for other reason
<b>MERSEYSIDE</b>	<b>136</b>	<b>43</b>	<b>11</b>	<b>6</b>	<b>6</b>	<b>4</b>	<b>0</b>	<b>31</b>
Knowsley	20	..	..	..	..	..	..	..
Liverpool	62	47	5	11	2	-	-	35
Sefton	20	35	10	-	-	10	-	45
St Helens	17	41	6	-	12	12	-	29
Wirral	17	29	41	-	24	-	-	6
<b>YORKS &amp; THE HUMBER</b>	<b>376</b>	<b>41</b>	<b>13</b>	<b>5</b>	<b>5</b>	<b>7</b>	<b>3</b>	<b>26</b>
North Yorkshire	21	76	10	-	5	5	-	5
East Riding Of Yorkshire	8	50	13	-	-	13	-	25
Kingston Upon Hull	32	44	16	3	9	3	-	25
North East Lincolnshire	14	50	14	-	-	14	7	14
North Lincolnshire	15	40	13	-	7	13	-	27
York	7	86	14	-	-	-	-	-
Barnsley	17	59	6	-	6	12	-	18
Bradford	46	7	7	7	9	17	2	52
Calderdale	19	16	63	5	-	-	-	16
Doncaster	23	39	4	9	4	4	4	35
Kirklees	29	52	10	10	7	-	-	21
Leeds	66	52	8	5	3	6	-	27
Rotherham	15	13	20	27	13	7	-	20
Sheffield	31	39	10	6	-	6	6	32
Wakefield	33	45	9	-	6	3	15	21
<b>EAST MIDLANDS</b>	<b>240</b>	<b>51</b>	<b>10</b>	<b>5</b>	<b>4</b>	<b>8</b>	<b>1</b>	<b>20</b>
Derbyshire	44	45	18	11	9	2	2	11
Leicestershire	16	63	13	6	6	-	-	13
Lincolnshire	38	53	3	13	-	13	-	18
Northamptonshire	45	58	9	-	2	7	-	24
Nottinghamshire	29	41	10	-	-	21	-	28
Derby	27	48	7	-	7	15	4	19
Leicester	13	38	8	-	8	8	8	31
Nottingham	27	63	7	7	4	-	-	19
Rutland	1	-	-	-	-	-	-	100

**Table 6 Education and employment status at 30 September 2000 of looked after children in Year 11 in 1999/2000 school year**

Local Authority	total number of looked after children in Year 11 in 1999/2000 school year	position of looked after children at 30 September 2000, shown as a percentage of total <sup>1</sup>						
		in full-time education	in full-time training	in full-time employment with planned training	in full-time employment with no planned training	in part-time employment, education, or training	unemployed as a result of ill-health or disability	unemployed for other reason
<b>WEST MIDLANDS</b>	<b>435</b>	<b>49</b>	<b>12</b>	<b>3</b>	<b>5</b>	<b>5</b>	<b>1</b>	<b>26</b>
Shropshire	13	62	8	-	8	8	-	15
Staffordshire	..	..	..	..	..	..	..	..
Warwickshire	35	60	11	3	-	-	-	26
Worcestershire	43	63	5	-	7	5	2	19
Herefordshire	16	63	13	-	19	-	-	6
Stoke-On-Trent	27	37	15	4	-	-	-	44
Telford & Wrekin	15	27	13	-	-	-	-	60
Birmingham	128	..	..	..	..	..	..	..
Coventry	29	48	10	-	10	-	-	31
Dudley	12	50	33	-	8	-	-	8
Sandwell	36	33	25	-	3	-	-	39
Solihull	12	25	25	8	-	8	-	33
Walsall	12	33	42	-	-	8	-	17
Wolverhampton	21	43	5	10	5	19	-	19
<b>SOUTH WEST</b>	<b>324</b>	<b>54</b>	<b>8</b>	<b>5</b>	<b>5</b>	<b>10</b>	<b>1</b>	<b>18</b>
Cornwall	33	55	6	3	-	3	6	27
Devon	44	..	..	..	..	..	..	..
Dorset	26	42	8	-	8	12	-	31
Gloucestershire	29	28	14	10	-	14	-	34
Isles Of Scilly	-	-	-	-	-	-	-	-
Somerset	25	64	16	12	4	-	-	4
Wiltshire	16	63	6	-	-	25	-	6
Bath & North East Somerset	14	64	7	7	-	7	-	14
Bournemouth	8	38	13	13	-	13	-	25
Bristol	52	52	8	2	12	12	-	15
North Somerset	9	56	-	-	11	22	-	11
Plymouth	22	82	5	-	-	14	-	-
Poole	5	20	20	-	20	20	-	20
South Gloucestershire	14	79	-	-	7	-	-	14
Swindon	13	38	-	31	15	8	-	8
Torbay	14	71	7	-	-	7	-	14

**Table 6 Education and employment status at 30 September 2000 of looked after children in Year 11 in 1999/2000 school year**

Local Authority	total number of looked after children in Year 11 in 1999/2000 school year	position of looked after children at 30 September 2000, shown as a percentage of total <sup>1</sup>						
		in full-time education	in full-time training	in full-time employment with planned training	in full-time employment with no planned training	in part-time employment, education, or training	unemployed as a result of ill-health or disability	unemployed for other reason
<b>LONDON</b>	<b>856</b>	<b>59</b>	<b>5</b>	<b>2</b>	<b>3</b>	<b>6</b>	<b>3</b>	<b>22</b>
Camden	24	75	4	-	-	-	-	21
City Of London	-	-	-	-	-	-	-	-
Greenwich	44	75	-	-	2	-	-	23
Hackney	37	..	..	..	..	..	..	..
Hammersmith & Fulham	44	77	-	2	-	5	-	16
Islington	69	41	6	4	7	9	1	32
Kensington & Chelsea	26	88	-	-	-	-	-	12
Lambeth	..	..	..	..	..	..	..	..
Lewisham	37	59	5	3	-	-	-	32
Southwark	58	45	3	2	9	9	2	31
Tower Hamlets	16	94	-	-	-	-	-	6
Wandsworth	28	75	7	-	-	-	-	18
Westminster	21	71	10	-	-	10	5	5
Barking & Dagenham	16	56	-	6	6	-	-	31
Barnet	14	50	-	-	-	7	-	43
Bexley	10	60	-	-	-	20	-	20
Brent	15	67	27	-	-	-	-	7
Bromley	25	72	8	4	-	12	-	4
Croydon	27	56	11	-	4	-	-	30
Ealing†	41	39	5	-	5	5	34	12
Enfield	34	50	-	-	6	15	3	26
Haringey	30	13	-	-	-	-	10	77
Harrow	10	30	20	20	-	10	-	20
Havering	5	40	-	-	-	20	-	40
Hillingdon	61	72	2	-	2	16	-	8
Hounslow	17	71	6	6	6	6	-	6
Kingston Upon Thames	11	45	9	-	-	18	-	27
Merton	14	71	-	-	14	7	-	7
Newham	23	70	-	4	-	-	17	9
Redbridge	8	100	-	-	-	-	-	-
Richmond Upon Thames	8	38	-	-	-	13	-	50
Sutton	12	50	17	-	-	25	-	8
Waltham Forest	22	59	5	14	-	9	-	14

**Table 6 Education and employment status at 30 September 2000 of looked after children in Year 11 in 1999/2000 school year**

Local Authority	total number of looked after children in Year 11 in 1999/2000 school year	position of looked after children at 30 September 2000, shown as a percentage of total <sup>1</sup>						
		in full-time education	in full-time training	in full-time employment with planned training	in full-time employment with no planned training	in part-time employment, education, or training	unemployed as a result of ill-health or disability	unemployed for other reason
<b>EAST OF ENGLAND</b>	<b>346</b>	<b>57</b>	<b>7</b>	<b>4</b>	<b>4</b>	<b>4</b>	<b>2</b>	<b>22</b>
Bedfordshire	17	47	6	-	6	-	12	29
Cambridgeshire	41	59	-	10	5	5	-	22
Essex†	82	70	1	6	2	4	1	16
Hertfordshire	45	47	7	2	4	7	4	29
Norfolk	36	58	22	3	-	8	-	8
Suffolk	61	46	13	3	2	-	-	36
Luton	15	60	-	-	20	7	-	13
Peterborough	18	50	11	-	11	-	6	22
Southend	21	62	-	5	-	10	-	24
Thurrock	10	70	10	-	-	10	-	10
<b>SOUTH EAST</b>	<b>484</b>	<b>58</b>	<b>7</b>	<b>4</b>	<b>6</b>	<b>7</b>	<b>2</b>	<b>16</b>
Buckinghamshire	19	100	-	-	-	-	-	-
East Sussex	26	42	19	8	8	8	8	8
Hampshire	69	64	7	3	3	6	3	14
Kent	..	..	..	..	..	..	..	..
Oxfordshire	23	52	17	-	-	22	-	9
Surrey	58	69	2	2	16	5	-	7
West Sussex†	43	63	7	7	5	5	-	12
Bracknell Forest	8	25	-	13	13	-	-	50
Brighton & Hove	23	61	-	-	-	17	4	17
Isle Of Wight	5	80	-	-	-	20	-	-
Medway Towns	21	43	10	10	-	14	5	19
Milton Keynes	21	38	5	-	19	14	-	24
Portsmouth	19	63	-	11	5	-	-	21
Reading	7	43	-	-	14	-	-	43
Slough	15	93	7	-	-	-	-	-
Southampton	20	45	-	5	5	-	-	45
West Berkshire	5	60	-	-	20	20	-	-
Windsor & Maidenhead	6	-	33	-	-	17	-	50
Wokingham	7	29	57	14	-	-	-	-

<sup>1</sup> in many cases actual figures for individual items are very small, percentages may represent only a few children

**Table 7 Offending by looked after children, year ending 30 September 2000**

Local Authority	looked after children			all children in police force area <sup>1</sup>	PAF Indicator C18 <sup>2</sup>
	number aged 10 years old or older	number cautioned or convicted during the year	percentage cautioned or convicted during the year	percentage cautioned or convicted during the year	
<b>ENGLAND</b>	<b>25,700</b>	<b>2,800</b>	<b>10.8</b>	<b>3.6</b>	<b>3.0</b>
<b>NORTH EAST</b>	<b>1,508</b>	<b>184</b>	<b>12.2</b>	<b>6.1</b>	<b>2.0</b>
Durham	275	18	6.5	4.9	1.3
Northumberland	142	12	8.5	7.1	1.2
Darlington	51	11	21.6	4.9	4.4
Hartlepool	33	4	12.1	5.1	2.4
Middlesbrough	82	2	2.4	5.1	0.5
Redcar & Cleveland	73	9	12.3	5.1	2.4
Stockton On Tees	74	3	4.1	5.1	0.8
Gateshead	122	25	20.5	7.1	2.9
Newcastle Upon Tyne	191	33	17.3	7.1	2.4
North Tyneside	122	21	17.2	7.1	2.4
South Tyneside	138	16	11.6	7.1	1.6
Sunderland	205	30	14.6	7.1	2.1
<b>NORTH WEST</b>	<b>3,109</b>	<b>346</b>	<b>11.1</b>	<b>4.2</b>	<b>2.6</b>
Cheshire	226	24	10.6	3.0	3.6
Cumbria	177	24	13.6	5.4	2.5
Lancashire	635	62	9.8	3.7	2.6
Blackburn With Darwen	114	2	1.8	3.7	0.5
Blackpool	102	6	5.9	3.7	1.6
Halton	55	7	12.7	3.0	4.3
Warrington	74	5	6.8	3.0	2.3
Bolton	126	16	12.7	4.8	2.6
Bury	78	4	5.1	4.8	1.1
Manchester	529	116	21.9	4.8	4.6
Oldham	125	18	14.4	4.8	3.0
Rochdale	96	16	16.7	4.8	3.5
Salford	232	13	5.6	4.8	1.2
Stockport	161	16	9.9	4.8	2.1
Tameside	151	2	1.3	4.8	0.3
Trafford	50	10	20.0	4.8	4.2
Wigan	178	5	2.8	4.8	0.6

**Table 7 Offending by looked after children, year ending 30 September 2000**

Local Authority	looked after children			all children in police force area <sup>1</sup>	PAF Indicator C18 <sup>2</sup>
	number aged 10 years old or older	number cautioned or convicted during the year	percentage cautioned or convicted during the year	percentage cautioned or convicted during the year	
<b>MERSEYSIDE</b>	<b>1,067</b>	<b>84</b>	<b>7.9</b>	<b>4.1</b>	<b>1.9</b>
Knowsley	131	14	10.7	4.1	2.6
Liverpool	534	44	8.2	4.1	2.0
Sefton	128	7	5.5	4.1	1.3
St Helens	122	10	8.2	4.1	2.0
Wirral	152	9	5.9	4.1	1.5
<b>YORKS &amp; THE HUMBER</b>	<b>2,859</b>	<b>369</b>	<b>12.9</b>	<b>4.0</b>	<b>3.3</b>
North Yorkshire	130	16	12.3	3.3	3.7
East Riding Of Yorkshire	77	2	2.6	4.0	0.6
Kingston Upon Hull	279	21	7.5	4.0	1.9
North East Lincolnshire	118	16	13.6	4.0	3.4
North Lincolnshire	80	8	10.0	4.0	2.5
York	56	5	8.9	3.3	2.7
Barnsley	137	17	12.4	3.9	3.2
Bradford	329	74	22.5	4.2	5.4
Calderdale	103	16	15.5	4.2	3.7
Doncaster	173	28	16.2	3.9	4.2
Kirklees	151	21	13.9	4.2	3.3
Leeds	585	80	13.7	4.2	3.3
Rotherham	149	18	12.1	3.9	3.1
Sheffield	275	22	8.0	3.9	2.1
Wakefield	217	25	11.5	4.2	2.8
<b>EAST MIDLANDS</b>	<b>1,623</b>	<b>182</b>	<b>11.2</b>	<b>3.3</b>	<b>3.4</b>
Derbyshire	281	4	1.4	2.8	0.5
Leicestershire	103	10	9.7	2.9	3.4
Lincolnshire	216	20	9.3	3.3	2.8
Northamptonshire	282	28	9.9	2.6	3.8
Nottinghamshire	168	31	18.5	4.7	3.9
Derby	213	30	14.1	2.8	5.1
Leicester	142	16	11.3	2.9	3.9
Nottingham	214	43	20.1	4.7	4.2
Rutland	4	-	-	2.9	-

**Table 7 Offending by looked after children, year ending 30 September 2000**

Local Authority	looked after children			all children in police force area <sup>1</sup>	PAF Indicator C18 <sup>2</sup>
	number aged 10 years old or older	number cautioned or convicted during the year	percentage cautioned or convicted during the year	percentage cautioned or convicted during the year	
<b>WEST MIDLANDS</b>	<b>2,901</b>	<b>356</b>	<b>12.3</b>	<b>3.7</b>	<b>3.3</b>
Shropshire	102	11	10.8	3.0	3.6
Staffordshire	..	..	..	3.0	..
Warwickshire	167	13	7.8	2.8	2.7
Worcestershire	284	23	8.1	3.0	2.7
Herefordshire	102	10	9.8	3.0	3.2
Stoke-On-Trent	180	29	16.1	3.0	5.4
Telford & Wrekin	73	8	11.0	3.0	3.6
Birmingham	790	135	17.1	4.4	3.9
Coventry	201	28	13.9	4.4	3.1
Dudley	141	15	10.6	4.4	2.4
Sandwell	198	10	5.1	4.4	1.1
Solihull	82	5	6.1	4.4	1.4
Walsall	137	19	13.9	4.4	3.1
Wolverhampton	201	24	11.9	4.4	2.7
<b>SOUTH WEST</b>	<b>2,245</b>	<b>222</b>	<b>9.9</b>	<b>2.6</b>	<b>3.9</b>
Cornwall	253	24	9.5	2.4	4.0
Devon	331	..	..	2.4	..
Dorset	134	12	9.0	2.6	3.4
Gloucestershire	239	7	2.9	3.0	1.0
Isles Of Scilly	-	-	-	2.4	-
Somerset	163	4	2.5	2.3	1.1
Wiltshire	114	16	14.0	3.1	4.5
Bath & North East Somerset	77	3	3.9	2.3	1.7
Bournemouth	75	8	10.7	2.6	4.1
Bristol	271	38	14.0	2.3	6.2
North Somerset	68	5	7.4	2.3	3.2
Plymouth	184	46	25.0	2.4	10.4
Poole	65	2	3.1	2.6	1.2
South Gloucestershire	78	5	6.4	2.3	2.8
Swindon	80	6	7.5	3.1	2.4
Torbay	113	10	8.8	2.4	3.7



**Table 7 Offending by looked after children, year ending 30 September 2000**

Local Authority	looked after children		all children in police force area <sup>1</sup>		PAF Indicator C18 <sup>2</sup>
	number aged 10 years old or older	number cautioned or convicted during the year	percentage cautioned or convicted during the year	percentage cautioned or convicted during the year	
<b>LONDON</b>	<b>4,669</b>	<b>440</b>	<b>9.4</b>	<b>3.8</b>	<b>2.5</b>
Camden	153	8	5.2	3.8	1.4
City Of London	1	-	-	28.7	-
Greenwich	214	25	11.7	3.8	3.1
Hackney	252	..	..	3.8	..
Hammersmith & Fulham	178	6	3.4	3.8	0.9
Islington	249	21	8.4	3.8	2.2
Kensington & Chelsea	114	7	6.1	3.8	1.6
Lambeth	..	..	..	3.8	..
Lewisham	254	46	18.1	3.8	4.8
Southwark	313	5	1.6	3.8	0.4
Tower Hamlets	71	16	22.5	3.8	6.0
Wandsworth	168	14	8.3	3.8	2.2
Westminster	125	10	8.0	3.8	2.1
Barking & Dagenham	105	14	13.3	3.8	3.5
Barnet	115	11	9.6	3.8	2.5
Bexley	85	8	9.4	3.8	2.5
Brent	80	11	13.8	3.8	3.7
Bromley	134	15	11.2	3.8	3.0
Croydon	163	15	9.2	3.8	2.4
Ealing†	211	50	23.7	3.8	6.3
Enfield	126	9	7.1	3.8	1.9
Haringey	182	18	9.9	3.8	2.6
Harrow	68	6	8.8	3.8	2.3
Havering	60	9	15.0	3.8	4.0
Hillingdon	152	9	5.9	3.8	1.6
Hounslow	121	4	3.3	3.8	0.9
Kingston Upon Thames	51	6	11.8	3.8	3.1
Merton	99	2	2.0	3.8	0.5
Newham	250	8	3.2	3.8	0.8
Redbridge	57	2	3.5	3.8	0.9
Richmond Upon Thames	37	2	5.4	3.8	1.4
Sutton	69	7	10.1	3.8	2.7
Waltham Forest	89	14	15.7	3.8	4.2

**Table 7 Offending by looked after children, year ending 30 September 2000**

Local Authority	looked after children			all children in police force area <sup>1</sup>	PAF Indicator C18 <sup>2</sup>
	number aged 10 years old or older	number cautioned or convicted during the year	percentage cautioned or convicted during the year	percentage cautioned or convicted during the year	
<b>EAST OF ENGLAND</b>	<b>2,331</b>	<b>231</b>	<b>9.9</b>	<b>2.9</b>	<b>3.4</b>
Bedfordshire	186	7	3.8	3.2	1.2
Cambridgeshire	202	14	6.9	2.8	2.5
Essex†	530	66	12.5	3.0	4.1
Hertfordshire	392	35	8.9	2.4	3.7
Norfolk	272	38	14.0	3.2	4.4
Suffolk	280	28	10.0	2.9	3.4
Luton	122	6	4.9	3.2	1.5
Peterborough	167	17	10.2	2.8	3.6
Southend	115	7	6.1	3.0	2.0
Thurrock	65	13	20.0	3.0	6.6
<b>SOUTH EAST</b>	<b>3,347</b>	<b>350</b>	<b>10.5</b>	<b>3.0</b>	<b>3.5</b>
Buckinghamshire	171	..	..	1.9	..
East Sussex	206	16	7.8	2.6	3.0
Hampshire	415	31	7.5	4.4	1.7
Kent	..	..	..	3.5	..
Oxfordshire	220	40	18.2	1.9	9.7
Surrey	331	22	6.6	2.7	2.4
West Sussex†	306	46	15.0	2.6	5.7
Bracknell Forest	29	4	13.8	1.9	7.4
Brighton & Hove	170	8	4.7	2.6	1.8
Isle Of Wight	75	14	18.7	4.4	4.3
Medway Towns	153	8	5.2	3.5	1.5
Milton Keynes	144	19	13.2	1.9	7.1
Portsmouth	106	17	16.0	4.4	3.7
Reading	59	5	8.5	1.9	4.5
Slough	67	7	10.4	1.9	5.6
Southampton	161	22	13.7	4.4	3.1
West Berkshire	56	3	5.4	1.9	2.9
Windsor & Maidenhead	29	4	13.8	1.9	7.4
Wokingham	55	2	3.6	1.9	1.9

1 source: Home Office; figures for calendar year 1999

2 the proportion of children (aged 10 or over) who had been looked after continuously for at least 12 months, who were cautioned or convicted during the year for an offence committed whilst they were looked after, expressed as a ratio of the proportion of all children and young people convicted of or cautioned for an offence in the police force area

**Table 8 Development assessments of pre-school looked after children, year ending 30 September 2000**

Local Authority	number aged 5 years old or younger	number whose development assessments were up-to-date	% whose development assessments were up-to-date
<b>ENGLAND</b>	<b>7,500</b>	<b>5,300</b>	<b>72</b>
<b>NORTH EAST</b>	<b>438</b>	<b>323</b>	<b>74</b>
Durham	53	6	11
Northumberland	28	16	57
Darlington	17	17	100
Hartlepool	29	29	100
Middlesbrough	16	16	100
Redcar & Cleveland	13	11	85
Stockton On Tees	34	32	94
Gateshead	28	21	75
Newcastle Upon Tyne	76	54	71
North Tyneside†	39	35	90
South Tyneside	34	25	74
Sunderland	71	61	86
<b>NORTH WEST</b>	<b>1,126</b>	<b>717</b>	<b>64</b>
Cheshire	59	59	100
Cumbria	17	12	71
Lancashire	206	137	67
Blackburn With Darwen	45	..	..
Blackpool	54	..	..
Halton	25	21	84
Warrington	42	13	31
Bolton	48	37	77
Bury	27	12	44
Manchester	226	94	42
Oldham	48	41	85
Rochdale	40	..	..
Salford	94	31	33
Stockport	54	25	46
Tameside	51	46	90
Trafford	16	16	100
Wigan	74	74	100

**Table 8 Development assessments of pre-school looked after children, year ending 30 September 2000**

Local Authority	number aged 5 years old or younger	number whose development assessments were up-to-date	% whose development assessments were up-to-date
<b>MERSEYSIDE</b>	<b>330</b>	<b>253</b>	<b>77</b>
Knowsley	19	14	74
Liverpool†	213	165	77
Sefton	25	17	68
St Helens	27	..	..
Wirral	46	38	83
<b>YORKS &amp; THE HUMBER</b>	<b>906</b>	<b>618</b>	<b>68</b>
North Yorkshire	52	50	96
East Riding Of Yorkshire	41	32	78
Kingston Upon Hull	84	69	82
North East Lincolnshire	32	15	47
North Lincolnshire	28	24	86
York	11	11	100
Barnsley	72	45	63
Bradford	53	52	98
Calderdale	31	19	61
Doncaster	47	31	66
Kirklees	37	34	92
Leeds	194	89	46
Rotherham	69	43	62
Sheffield†	101	64	63
Wakefield	54	40	74
<b>EAST MIDLANDS</b>	<b>604</b>	<b>510</b>	<b>84</b>
Derbyshire	57	42	74
Leicestershire	37	29	78
Lincolnshire	49	40	82
Northamptonshire	70	59	84
Nottinghamshire	105	95	90
Derby	77	67	87
Leicester	87	78	90
Nottingham	121	99	82
Rutland	1	1	100

**Table 8 Development assessments of pre-school looked after children, year ending 30 September 2000**

Local Authority	number aged 5 years old or younger	number whose development assessments were up-to-date	% whose development assessments were up-to-date
<b>WEST MIDLANDS</b>	<b>847</b>	<b>566</b>	<b>67</b>
Shropshire	17	16	94
Staffordshire	..	..	..
Warwickshire	27	26	96
Worcestershire	90	50	56
Herefordshire	27	25	93
Stoke-On-Trent	41	35	85
Telford & Wrekin	7	7	100
Birmingham	232	92	40
Coventry	91	68	75
Dudley	62	51	82
Sandwell	51	26	51
Solihull	17	17	100
Walsall	62	58	94
Wolverhampton	52	44	85
<b>SOUTH WEST</b>	<b>543</b>	<b>381</b>	<b>70</b>
Cornwall	69	46	67
Devon	71	..	..
Dorset	18	16	89
Gloucestershire	37	36	97
Isles Of Scilly	-	-	-
Somerset	21	15	71
Wiltshire	17	14	82
Bath & North East Somerset	15	15	100
Bournemouth	30	30	100
Bristol	75	57	76
North Somerset	26	24	92
Plymouth	90	20	22
Poole	10	10	100
South Gloucestershire	12	11	92
Swindon	22	15	68
Torbay	30	21	70

**Table 8 Development assessments of pre-school looked after children, year ending 30 September 2000**

Local Authority	number aged 5 years old or younger	number whose development assessments were up-to-date	% whose development assessments were up-to-date
<b>LONDON</b>	<b>1,145</b>	<b>862</b>	<b>75</b>
Camden	45	..	..
City Of London	1	1	100
Greenwich	67	..	..
Hackney	62	..	..
Hammersmith & Fulham	26	22	85
Islington	67	64	96
Kensington & Chelsea	13	13	100
Lambeth	..	..	..
Lewisham	50	36	72
Southwark	84	56	67
Tower Hamlets	19	19	100
Wandsworth	41	40	98
Westminster	40	40	100
Barking & Dagenham	22	6	27
Barnet	25	19	76
Bexley	26	17	65
Brent	19	10	53
Bromley	32	21	66
Croydon†	47	47	100
Ealing	30	..	..
Enfield	25	25	100
Haringey	35	19	54
Harrow	16	..	..
Havering	16	14	88
Hillingdon	35	32	91
Hounslow	25	8	32
Kingston Upon Thames	2	2	100
Merton	24	2	8
Newham	81	..	..
Redbridge	23	19	83
Richmond Upon Thames	10	10	100
Sutton	18	16	89
Waltham Forest	25	21	84

**Table 8 Development assessments of pre-school looked after children, year ending 30 September 2000**

Local Authority	number aged 5 years old or younger	number whose development assessments were up-to-date	% whose development assessments were up-to-date
<b>EAST OF ENGLAND</b>	<b>640</b>	<b>423</b>	<b>66</b>
Bedfordshire	31	29	94
Cambridgeshire	40	24	60
Essex†	181	115	64
Hertfordshire	120	27	23
Norfolk	79	78	99
Suffolk	55	38	69
Luton	34	31	91
Peterborough	55	43	78
Southend	40	35	88
Thurrock	5	3	60
<b>SOUTH EAST</b>	<b>886</b>	<b>691</b>	<b>78</b>
Buckinghamshire	34	19	56
East Sussex	65	60	92
Hampshire	130	..	..
Kent	..	..	..
Oxfordshire	32	32	100
Surrey	84	..	..
West Sussex†	72	65	90
Bracknell Forest	8	6	75
Brighton & Hove	44	40	91
Isle Of Wight	22	16	73
Medway Towns	46	45	98
Milton Keynes	34	33	97
Portsmouth	29	9	31
Reading	11	11	100
Slough	25	19	76
Southampton	52	34	65
West Berkshire	11	11	100
Windsor & Maidenhead	10	10	100
Wokingham	4	4	100

**Table 9 Health care of looked after children, year ending 30 September 2000**

Local Authority	number looked after for at least one year	numbers			percentages			PAF Indicator C19 <sup>1</sup> (average percentage)
		children whose immunisations were up to date	children who had their teeth checked by a dentist	children who had their annual health assessment	children whose immunisations were up to date	children who had their teeth checked by a dentist	children who had their annual health assessment	
<b>ENGLAND</b>	<b>42,200</b>	<b>29,000</b>	<b>26,800</b>	<b>27,400</b>	<b>69</b>	<b>63</b>	<b>65</b>	<b>66</b>
<b>NORTH EAST</b>	<b>2,475</b>	<b>1,325</b>	<b>1,596</b>	<b>1,666</b>	<b>54</b>	<b>64</b>	<b>67</b>	<b>62</b>
Durham	385	51	321	246	13	83	64	54
Northumberland	210	26	41	142	12	20	68	33
Darlington	90	55	17	56	61	19	62	47
Hartlepool	79	40	14	40	51	18	51	40
Middlesbrough	130	116	99	99	89	76	76	81
Redcar & Cleveland	109	85	71	72	78	65	66	70
Stockton On Tees	154	152	141	139	99	92	90	94
Gateshead	184	107	147	129	58	80	70	69
Newcastle Upon Tyne	322	68	105	132	21	33	41	32
North Tyneside†	220	202	154	163	92	70	74	79
South Tyneside	222	124	162	186	56	73	84	71
Sunderland	370	299	324	262	81	88	71	80
<b>NORTH WEST</b>	<b>5,495</b>	<b>3,437</b>	<b>3,677</b>	<b>3,560</b>	<b>63</b>	<b>67</b>	<b>65</b>	<b>65</b>
Cheshire	356	346	328	291	97	92	82	90
Cumbria	251	..	136	142	..	54	57	..
Lancashire	1,063	919	664	655	86	62	62	70
Blackburn With Darwen	214	..	..	158	..	..	74	..
Blackpool	191	..	..	..	..	..	..	..
Halton	119	103	98	85	87	82	71	80
Warrington	136	71	92	74	52	68	54	58
Bolton	216	166	167	157	77	77	73	76
Bury	140	25	35	69	18	25	49	31
Manchester	990	82	676	527	8	68	53	43
Oldham	217	177	141	127	82	65	59	68
Rochdale	186	180	147	180	97	79	97	91
Salford	431	170	203	289	39	47	67	51
Stockport	279	157	164	134	56	59	48	54
Tameside	254	165	173	152	65	68	60	64
Trafford	89	81	75	78	91	84	88	88
Wigan	363	342	321	318	94	88	88	90



**Table 9 Health care of looked after children, year ending 30 September 2000**

Local Authority	number looked after for at least one year	numbers			percentages			PAF Indicator C19 <sup>1</sup> (average percentage)
		children whose immunisations were up to date	children who had their teeth checked by a dentist	children who had their annual health assessment	children whose immunisations were up to date	children who had their teeth checked by a dentist	children who had their annual health assessment	
<b>MERSEYSIDE</b>	<b>1,849</b>	<b>1,111</b>	<b>950</b>	<b>1,132</b>	<b>60</b>	<b>51</b>	<b>61</b>	<b>58</b>
Knowsley	192	104	129	166	54	67	86	69
Liverpool†	975	575	341	566	59	35	58	51
Sefton	196	122	153	137	62	78	70	70
St Helens	208	100	121	88	48	58	42	50
Wirral	278	210	206	175	76	74	63	71
<b>YORKS &amp; THE HUMBER</b>	<b>4,895</b>	<b>3,471</b>	<b>3,275</b>	<b>3,295</b>	<b>71</b>	<b>67</b>	<b>67</b>	<b>68</b>
North Yorkshire	224	176	175	172	79	78	77	78
East Riding Of Yorkshire	164	107	81	97	65	49	59	58
Kingston Upon Hull	509	396	383	430	78	75	84	79
North East Lincolnshire	203	150	24	19	74	12	9	32
North Lincolnshire	144	132	114	97	92	79	67	79
York	87	86	60	75	99	69	86	85
Barnsley	256	216	207	198	84	81	77	81
Bradford	530	385	399	385	73	75	73	74
Calderdale	154	116	96	89	75	62	58	65
Doncaster	295	191	171	177	65	58	60	61
Kirklees	231	222	204	182	96	88	79	88
Leeds	1,003	520	752	589	52	75	59	62
Rotherham†	263	161	192	184	61	73	70	68
Sheffield†	490	318	125	362	65	26	74	55
Wakefield	342	295	292	239	86	85	70	81
<b>EAST MIDLANDS</b>	<b>2,846</b>	<b>2,430</b>	<b>2,280</b>	<b>2,240</b>	<b>85</b>	<b>80</b>	<b>79</b>	<b>81</b>
Derbyshire	440	424	376	373	96	85	85	89
Leicestershire	176	148	115	129	84	65	73	74
Lincolnshire	360	326	297	278	91	83	77	83
Northamptonshire†	428	205	321	328	48	75	77	67
Nottinghamshire	354	341	305	305	96	86	86	90
Derby	335	310	278	258	93	83	77	84
Leicester	317	273	201	206	86	63	65	72
Nottingham	431	400	384	361	93	89	84	89
Rutland	5	3	3	2	60	60	40	53

**Table 9 Health care of looked after children, year ending 30 September 2000**

Local Authority	number looked after for at least one year	numbers			percentages			PAF Indicator C19 <sup>1</sup> (average percentage)
		children whose immunisations were up to date	children who had their teeth checked by a dentist	children who had their annual health assessment	children whose immunisations were up to date	children who had their teeth checked by a dentist	children who had their annual health assessment	
<b>WEST MIDLANDS</b>	<b>4,813</b>	<b>3,631</b>	<b>2,339</b>	<b>2,391</b>	<b>75</b>	<b>49</b>	<b>50</b>	<b>58</b>
Shropshire	129	84	70	84	65	54	65	61
Staffordshire	..	..	..	..	..	..	..	..
Warwickshire	225	192	184	133	85	82	59	75
Worcestershire	473	217	261	33	46	55	7	36
Herefordshire	158	149	126	79	94	80	50	75
Stoke-On-Trent	274	233	209	206	85	76	75	79
Telford & Wrekin	104	56	78	66	54	75	63	64
Birmingham	1,368	930	107	493	68	8	36	37
Coventry	388	350	187	209	90	48	54	64
Dudley	283	252	217	194	89	77	69	78
Sandwell†	313	256	143	189	82	46	60	63
Solihull	114	90	..	56	79	..	49	..
Walsall	269	259	229	205	96	85	76	86
Wolverhampton	316	287	202	184	91	64	58	71
<b>SOUTH WEST</b>	<b>3,375</b>	<b>2,314</b>	<b>2,096</b>	<b>2,155</b>	<b>69</b>	<b>62</b>	<b>64</b>	<b>65</b>
Cornwall	403	283	263	290	70	65	72	69
Devon	504	..	..	..	..	..	..	..
Dorset	178	145	..	118	81	..	66	..
Gloucestershire	333	183	240	213	55	72	64	64
Isles Of Scilly	-	-	-	-	-	-	-	-
Somerset†	211	83	72	130	39	34	62	45
Wiltshire	167	154	146	116	92	87	69	83
Bath & North East Somerset	108	96	95	83	89	88	77	85
Bournemouth	133	104	75	75	78	56	56	64
Bristol	437	321	244	306	73	56	70	66
North Somerset	106	61	74	67	58	70	63	64
Plymouth	288	206	116	114	72	40	40	50
Poole	103	58	74	60	56	72	58	62
South Gloucestershire	100	79	86	89	79	86	89	85
Swindon	122	67	43	42	55	35	34	42
Torbay	182	126	135	124	69	74	68	71

**Table 9 Health care of looked after children, year ending 30 September 2000**

Local Authority	number looked after for at least one year	numbers			percentages			PAF Indicator C19 <sup>1</sup> (average percentage)
		children whose immunisations were up to date	children who had their teeth checked by a dentist	children who had their annual health assessment	children whose immunisations were up to date	children who had their teeth checked by a dentist	children who had their annual health assessment	
<b>LONDON</b>	<b>7,295</b>	<b>4,410</b>	<b>4,448</b>	<b>4,815</b>	<b>60</b>	<b>61</b>	<b>66</b>	<b>62</b>
Camden	227	190	165	162	84	73	71	76
City Of London	2	2	2	2	100	100	100	100
Greenwich	304	261	227	226	86	75	74	78
Hackney	387	..	..	..	..	..	..	..
Hammersmith & Fulham	287	84	93	177	29	32	62	41
Islington	388	251	160	232	65	41	60	55
Kensington & Chelsea	155	133	123	120	86	79	77	81
Lambeth	..	..	..	..	..	..	..	..
Lewisham	363	116	146	121	32	40	33	35
Southwark	501	134	244	276	27	49	55	44
Tower Hamlets	191	151	159	142	79	83	74	79
Wandsworth	257	156	225	229	61	88	89	79
Westminster	202	133	153	162	66	76	80	74
Barking & Dagenham	153	52	63	84	34	41	55	43
Barnet	167	74	45	107	44	27	64	45
Bexley	135	92	91	96	68	67	71	69
Brent	137	57	93	83	42	68	61	57
Bromley	193	136	123	127	70	64	66	67
Croydon†	263	246	247	231	94	94	88	92
Ealing†	326	112	134	216	34	41	66	47
Enfield	185	110	143	129	59	77	70	69
Haringey	256	158	138	141	62	54	55	57
Harrow	108	84	80	84	78	74	78	77
Havering	97	94	85	86	97	88	89	91
Hillingdon	212	182	187	158	86	88	75	83
Hounslow	193	106	93	114	55	48	59	54
Kingston Upon Thames	61	55	55	44	90	90	72	84
Merton	142	28	25	93	20	18	65	34
Newham	433	..	..	..	..	..	..	..
Redbridge	98	86	87	89	88	89	91	89
Richmond Upon Thames	62	42	27	25	68	44	40	51
Sutton	107	83	71	75	78	66	70	71
Waltham Forest	172	69	106	105	40	62	61	54

**Table 9 Health care of looked after children, year ending 30 September 2000**

Local Authority	number looked after for at least one year	numbers			percentages			PAF Indicator C19 <sup>1</sup> (average percentage)
		children whose immunisations were up to date	children who had their teeth checked by a dentist	children who had their annual health assessment	children whose immunisations were up to date	children who had their teeth checked by a dentist	children who had their annual health assessment	
<b>EAST OF ENGLAND</b>	<b>3,710</b>	<b>2,686</b>	<b>2,648</b>	<b>2,482</b>	<b>72</b>	<b>71</b>	<b>67</b>	<b>70</b>
Bedfordshire	267	247	236	227	93	88	85	89
Cambridgeshire	301	270	263	193	90	87	64	80
Essex†	864	673	566	554	78	66	64	69
Hertfordshire	620	347	280	298	56	45	48	50
Norfolk	443	418	401	323	94	91	73	86
Suffolk	409	358	308	309	88	75	76	79
Luton	213	187	195	179	88	92	84	88
Peterborough	293	56	206	222	19	70	76	55
Southend	187	63	115	108	34	61	58	51
Thurrock	113	67	78	69	59	69	61	63
<b>SOUTH EAST</b>	<b>5,411</b>	<b>4,136</b>	<b>3,460</b>	<b>3,697</b>	<b>76</b>	<b>64</b>	<b>68</b>	<b>70</b>
Buckinghamshire	248	122	..	..	49	..	..	..
East Sussex	345	314	327	255	91	95	74	87
Hampshire	685	..	..	..	..	..	..	..
Kent	..	..	..	..	..	..	..	..
Oxfordshire	339	316	288	214	93	85	63	80
Surrey	529	389	289	344	74	55	65	64
West Sussex†	475	394	107	372	83	23	78	61
Bracknell Forest	44	17	23	32	39	52	73	55
Brighton & Hove	279	232	227	164	83	81	59	74
Isle Of Wight	127	120	109	80	94	86	63	81
Medway Towns	260	249	246	234	96	95	90	93
Milton Keynes	225	198	164	158	88	73	70	77
Portsmouth	179	106	31	129	59	17	72	50
Reading	94	80	74	67	85	79	71	78
Slough	102	80	57	38	78	56	37	57
Southampton	287	182	118	204	63	41	71	59
West Berkshire	98	96	95	75	98	97	77	90
Windsor & Maidenhead	50	47	48	40	94	96	80	90
Wokingham	68	46	44	48	68	65	71	68

1 The average of the percentages of children looked after at 30 September who had been looked after continuously for at least 12 months, and who had routine immunisations up to date, had their teeth checked by a dentist during the previous 12 months, and had an annual health assessment during the previous 12 months

Department of Health

Form OC2

1999/2000

## Outcome indicators for looked after children

LA Code:

--	--	--

Name of local authority:
Contact regarding this form:
Telephone no. and extension:
E-mail address:

**SEND BY 30 NOV 2000** TC Department of Health,  
Outcome indicators,  
Statistics Division 3A,  
Room 451C,  
Skipton House,  
80 London Road,  
London SE1 6LH

Or email to us at: CHILDSTATS@doh.gsi.gov.uk

For help and information:

phone: 020-7972-5710

fax: 020-7972-5662

Electronic versions of this form may be downloaded from:  
[www.doh.gov.uk/stats/forms.htm](http://www.doh.gov.uk/stats/forms.htm)

Department of Health

Form OC2 1999/2000

## Outcome indicators for looked after children

Consider only children who were looked after by your authority at 30 September 2000, and who at that time had been looked after continuously for at least a year.

Submit completed forms by 30 November 2000

### 1 Total number

Question

Number of children looked after at 30 September  
who had been looked after for at least a year

--	--	--	--

1

### 2 General education

Number old enough to receive full-time  
schooling during the 1999/2000 school year

--	--	--

2a

and of these, the number who at any time during the school year:

were covered by a statement  
of special educational needs

--	--	--

2b

received a permanent exclusion from school

--	--	--

2c

missed at least 25 days school for any reason

--	--	--

2d

---

**3** Key stage 1

Question

Number in year 2 at school and who should have  
sat the end of Key Stage 1 tasks and tests

3a

Number who sat all of these tasks and tests

3b

Number who attained at least level 2 in the following:

Reading task

3c

Reading comprehension tests

3d

Writing task

3e

Spelling test

3f

Mathematics task / test

3g

---

**4** Key stage 2

Number in year 6 at school who should  
have sat the end of Key Stage 2 tests

4a

Number who sat all of these tests

4b

Number who attained at least level 4 in the following tests:

English

4c

Mathematics

4d

Science

4e

---

**5** Key stage 3

Question

Number in year 9 at school and who should  
have sat the end of Key Stage 3 tests

5a

Number who sat all these tests

5b

Number who attained at least level 5 in the following tests:

English

5c

Mathematics

5d

Science

5e

---

**6** GCSEs and GNVQs

Number in year 11 at school and old enough  
to sit GCSE or GNVQ examinations

6a

Number who sat at least 1 of these examinations

6b

Number who obtained at least:

1 GCSE at grade A\* to G or a GNVQ

6c

5 GCSEs at grade A\* to G

6d

5 GCSEs at grade A\* to C

6e



---

7 Offending	Question
Number aged 10 or over at 30 September	<input type="text"/> <input type="text"/> <input type="text"/> 7a
Number convicted or cautioned during the year for an offence committed while being looked after	<input type="text"/> <input type="text"/> <input type="text"/> 7b

---

8 Development	
Number 5 years old or younger at 30 September	<input type="text"/> <input type="text"/> <input type="text"/> 8a
and of these, the number whose development assessments were up to date	<input type="text"/> <input type="text"/> <input type="text"/> 8b

---

9 Immunisations	
Number whose immunisations were up to date at 30 September	<input type="text"/> <input type="text"/> <input type="text"/> 9

---

10 Dental checks	
Number who had their teeth checked by a dentist during the year ending 30 September	<input type="text"/> <input type="text"/> <input type="text"/> 10

---

11 Health assessments	
Number who had their annual health assessment during the year ending 30 September	<input type="text"/> <input type="text"/> <input type="text"/> 11

---

---

**12** Position at age 16 or over

Question

Number aged 16 or over at 30 September  
and who had completed year 11 at school

12a

and of these, the number who at 30 September were in:

full-time education

12b

full-time training

12c

full-time employment with planned training

12d

full-time employment with no planned training

12e

part-time employment, education, or training

12f

unemployed as a result of ill-health or a disability

12g

unemployed for other reason

12h

---

**Outcome Indicators for Looked-after Children ,  
1999/2000: Guidance notes and definitions  
for Department of Health statistical return OC2**

**For help and information:** Ring 020-7972-5710.  
Fax: 020-7972-5662.

Send completed form or disk to:  
Department of Health, Outcome indicators, SD3A,  
Room 451C, Skipton House,  
80 London Rd, London SE1 6LH

Or email it to:  
childstats@doh.gsi.gov.uk

**Completing this return.**

Write totals in the boxes. Write 00 or 0 if there were no children in the relevant category. Boxes must not contain letters or symbols, such as hyphens or asterisks.

**Comments**

Do not write comments on the form. Any comments on interpretation should be given in a covering letter.

**Deadline**

The final deadline for submitting the completed return will be 30 November 2000. If you submit after this date, you may be too late to be included in the published figures.

**Children covered by this return**

This return only applies to children who were looked after on 30 September 2000, and had been looked after continuously by your authority for at least a year. (See box on definitions of 'year').

**Include 'missing' children**

Children who are missing from their agreed placement (SSDA 903 placement codes M1, M2 or M3), and do not return to LA care, should be regarded as remaining in care until their 18th birthday (regardless of legal status) and included in this return accordingly.

## Methods of submitting this return.

### As a paper form

A 'paper version', suitable for completion by hand, is supplied. Completed forms (pages 1-5 only) should be returned to the address at the top of the notes.

### Electronic submission

This form is also available as an Excel spreadsheet. It is identical to the paper version, except that the figures required are typed into a single cell for each question.

This version and these guidance notes may be downloaded from the PSS Statistical Returns website at [www.doh.gov.uk/stats/forms.htm](http://www.doh.gov.uk/stats/forms.htm). It will also be sent on request by post on disk, or by email. The completed form can be returned on disk by post, or by email to the address given above.

## Definitions of 'year'

This statistical collection differs from most other DH collections in that it is not based on the standard financial year ending 31 March.

For the purposes of form OC2, a 'year' is **the inclusive period from 1 October to 30 September of the following calendar year**, unless stated otherwise.

The relevant 'school year' is that which largely overlaps with this period. The dates on which 'school years' actually start and end can vary from year to year or between areas, but normally span a period from a date in September to a date in July of the following calendar year.

For example, form OC2 for 1999/2000 covers the period from 1 October 1999 to 30 September 2000 inclusive. The relevant school year is that which runs from September 1999 to July 2000.

## Individual numbered questions on form

<b>Section 1</b>	<b>Total number of children</b>
------------------	---------------------------------

- 1** Include all children looked after by your authority on the 30 September and who had been looked after continuously from and including 1 October of the previous year or earlier.

Exclude children looked after at any point during that time under an agreed series of short term placements (under the provisions of Reg. 13 of the *Arrangement for Placement of Children (General) Regulations, 1991*)

<b>Section 2</b>	<b>General Education</b>
------------------	--------------------------

- 2a** Of those children covered by question 1, include any who received or should have received full time schooling at any time during the school year. Include children in educational institutions such as Pupil Referral Units or Young Offenders Institutions.
- 2b** Of those children covered by question 2a count any who were in receipt of a statement of special educational needs (stage 5 in the Code of Practice) at any time during the school year.
- 2c** Of those children covered by question 2a count any who were permanently excluded from school at any time during the school year. Do not include children who received only a temporary exclusion.
- 2d** Of those children covered by question 2a count any who missed a total of 25 or more days of school during the school year. Include any absence whether authorised or unauthorised. Include time missed as a result of temporary or permanent exclusion. Include time missed as a result of illness. Add all forms of absence together for each child including any half days missed.

<b>Section 3</b>	<b>Key Stage 1</b>
------------------	--------------------

- 3a** Of those children covered by question 1 include all those in school year 2 during the year. Include any who were excluded from school or absent for any other reason. Include children who were disapplied.
- 3b** Of those children covered by question 3a count all those who sat and received a score for all the tasks and tests at the end of Key Stage 1. Exclude from this any who failed to receive a score for one or more of the tasks or tests. Do not treat teacher assessments as a substitute.
- 3c-g** Of those children covered by question 3a for each subject count the number attaining level 2 or higher in the tasks or tests. Do not include scores from teacher assessments.

<b>Section 4</b>	<b>Key Stage 2</b>
------------------	--------------------

- 4a** Of those children covered by question 1 include all those in school year 6 during the year. Include any who were excluded from school or absent for any other reason. Include children who were disapplied.
- 4b** Of those children covered by question 3a count all those who sat and received a score for all the tasks and tests at the end of Key Stage 2. Exclude from this any who failed to receive a score for one or more of the tasks or tests. Do not treat teacher assessments as a substitute.
- 4c-e** Of those children covered by question 4a for each subject count the number attaining level 4 or higher in the three tests. Do not include scores from teacher assessments.

<b>Section 5</b>	<b>Key Stage 3</b>
------------------	--------------------

- 5a** Of those children covered by question 1 include all those in school year 9 during the year. Include any who were excluded from school or absent for any other reason. Include children who were disapplied.
- 5b** Of those children covered by question 3a count all those who sat and received a score for all the tasks and tests at the end of Key Stage 3. Exclude from this any who failed to receive a score for one or more of the tasks or tests. Do not treat teacher assessments as a substitute.
- 5c-e** Of those children covered by question 5a for each subject count the number attaining level 5 or higher in the three tests. Do not include scores from teacher assessments.

<b>Section 6</b>	<b>GCSEs and GNVQs</b>
------------------	------------------------

- 6a** Of those children covered by question 1 include all those who completed school year 11 during the year. Include any who were excluded from school, disapplied, or absent for any other reason. Include children in educational institutions such as Pupil Referral Units or Young Offenders Institutions.
- 6b** Of those children covered by question 6a count all those obtaining at least one GCSE or GNVQ examination.
- 6c** Of those children covered by question 6b count the number obtaining at least 1 GCSE (at grade A\*-G) or a GNVQ during the year. Treat 2 GCSE (Short Courses) as equivalent to 1 GCSE at the lower of the two grades. Treat a single GCSE (Short Course) as 1 GCSE. Include GNVQ qualifications at foundation level or intermediate level. Count a GNVQ Language Unit as 1 GNVQ. Do not count NVQs. Answer will include all children included in the answer to question 6d.

- 6d** Of those children covered by question 6b count the number obtaining at least 5 GCSEs (at grade A\*-G). Answer will include all children included in the answer to question 6e.
- 6e** Of those children covered by question 6b count the number obtaining at least 5 GCSEs (at grade A\*-C)

<b>Section 7</b>	<b>Offending</b>
------------------	------------------

- 7a** Of those children covered by question 1, the number aged 10 or over at 30 September.
- 7b** Of those children covered by question 7a count the number who have been convicted for an offence during the year. Include offences committed before the start of the year if they were committed while the child was looked after. Do not include offences committed while the child was not looked after. From 1 April 2000 include children subject to a final warning under the Crime and Disorder Act.

<b>Section 8</b>	<b>Development</b>
------------------	--------------------

- 8a** Of those children covered by question 1, the number aged 5 years old or younger at 30 September.
- 8b** Of those children covered by question 8a, the number whose development assessments were up to date. Include in this count children who missed earlier assessments, providing they had received their later assessments. These are assessments covered by the Child Health Surveillance Programme.

(See Health Service Guidelines HSG[92]19 ).

<b>Section 9</b>	<b>Immunisations</b>
------------------	----------------------

- 9** Of those children covered by question 1, the number whose immunisations were up to date.

A timetable for childhood immunisations is attached at *Appendix 1*.

<b>Section 10</b>	<b>Dental Checks</b>
-------------------	----------------------

- 10** Of those children covered by question 1, the number who had their teeth checked by a dentist during the year.

<b>Section 11</b>	<b>Health Assessments</b>
-------------------	---------------------------

- 11** Of those children covered by question 1, the number who received their annual health assessment from a doctor during the year. Include children who declined to have a health assessment.

(See Regulation 6 of the *Review of Children's Cases Regulations, 1991*. This Statutory Instrument is reproduced as Annex C to 'The Children Act 1989, Guidance and Regulations: Volume 4, Residential Care').

<b>Section 12</b>	<b>Position at 16 or over</b>
-------------------	-------------------------------

- 12a** Of those children covered by question 1, the number who completed year 11 at school during the year. Include children in educational institutions such as Pupil Referral Units or Young Offenders Institutions.
- 12b-12h** Of those covered by question 12a, select for each child the one category that most accurately reflects their position at the end of September. The total of the answers to 12b -12h should equal 12a. These definitions are taken from those used by the Careers Service for their annual Activity Survey; the local Careers Service may be able to provide advice on the classification of the education, training and employment available locally.
- 12b Full time education:** this is post compulsory education consisting of guided learning for 16 hours a week or more.
- 12c Full time training:** include national traineeships that do not carry employed status and other government supported work based training without employment status.
- 12d Full time employment with planned training:** include employment for 16 hours a week or more which offers a structured package of on and/or off the job training. This may lead to NVQ level 2 qualifications or equivalent, but also include employment that provides locally recognised, good quality, structured training not leading to NVQ level 2. Include all modern apprenticeships, those national traineeships carrying employed status, and other government supported work based training carrying employed status.
- 12e Full time employment with no planned training:** this is employment for 16 hours a week or more which does not offer a structured package of on and/or off the job training.
- 12f Part-time employment, education or training:** part-time employment is for less than 16 hours a week; part time education or training means less than 16 hours guided learning per week.



- 12g Unemployed as a result of ill-health or disability:** include those with a long term illness or disability that prevents them from obtaining employment or further education or training
- 12h Unemployed for other reason:** those not in full time or part time employment, education or training and whose unemployment is not the result of long term illness or disability, whether or not they are seeking employment or training. Include those who are caring for relatives and as a result cannot take up education, training or employment.

© Crown Copyright 1999.  
Produced by the Government Statistical Service



**Appendix 1****When childhood immunisations are due**

This table is reproduced from the leaflet 'A Guide to Childhood Immunisations', which is available from GP practices.

<b>When is the Immunisation due?</b>	<b>Which immunisations?</b>	<b>Type</b>
<b>At two months</b>	Polio	By mouth
	HIB Diphtheria Tetanus Whooping Cough	One injection
<b>At three months</b>	Polio	By mouth
	HIB Diphtheria Tetanus Whooping cough	One injection
<b>At four months</b>	Polio	By mouth
	HIB Diphtheria Tetanus Whooping cough	One injection
<b>At 12 to 15 months</b>	Measles Mumps Rubella	One injection
<b>3 to 5 years (usually before the child starts school)</b>	Measles Mumps Rubella	One injection
	Diphtheria Tetanus	One injection
	Polio	By mouth
<b>10 to 14 years (sometimes shortly after birth)</b>	BCG (against tuberculosis)	Skin test, followed by one injection if needed
<b>School leavers: 13 to 18 years</b>	Diphtheria Tetanus	One injection
	Polio	By mouth

**DEPARTMENT OF HEALTH - STATISTICS DIVISION 3:  
PUBLICATIONS ON PERSONAL SOCIAL SERVICES (LOCAL AUTHORITY STATISTICS)**  
DH web page: [www.doh.gov.uk/public/stats3.htm](http://www.doh.gov.uk/public/stats3.htm)

**Services for Children**  
**(Contact: Marcus Carlton 020 7972 5573)**

**Annual publications**

- Children looked after by Local Authorities A/F 12
- Children and Young People on Child Protection Registers A/F 13
- Outcome Indicators for looked after children
- Children's Homes<sup>1</sup> A/F 22
- *Children's Day Care Facilities (Has now transferred to the DfEE: tel. 01325 392765)* A/F 6
- The Children Act Report 1995-1999 (The Stationery Office)
- Children in Need in England, February 2000 (Contact: Mike Barker 020 7972 5593)

**Statistical Bulletins**

- Children looked after in England: 1999-00 2000/24
- Children accommodated in secure units year ending 31 March 2000: England and Wales 2000/15
- Educational qualifications of care leavers year ending 31 March 2000: England 2000/25
- The Children Act Report - 1999 supplement  
(published at [www.doh.gov.uk/scg/childrenactreport1999.htm](http://www.doh.gov.uk/scg/childrenactreport1999.htm))

**Services for Adults**  
**(Contact: Tracie Kilbey 020 7972 5582)**

**Annual publications**

- Community Care Statistics:  
Day and Domiciliary personal social services for adults. Detailed statistics. HMD/98
- Community care Statistics:  
Residential personal social services for adults. Detailed statistics on  
residential and nursing care homes and Local Authority supported residents. RA/98
- Registered Blind and Partially Sighted People<sup>1</sup>
- Registers of People with Physical Disabilities A/F 19
- People registered as Deaf or Hard of Hearing<sup>1</sup> A/F 20
- Guardianship under the Mental Health Act 1983, England 1999

**Statistical bulletins**

- Community care statistics:  
Day and Domiciliary Personal Social Services for adults 1999/10
- Community care Statistics:  
Residential personal social services for adults, England 2000/28
- Private hospitals, homes and clinics registered  
under Section 23 of the Registered Homes Act 1984 2000/16

**Staffing, Finance, Key Indicators and PAF  
(Contact: Keith Childs 020 7972 5736)**

**Statistical Bulletins**

- Personal social services staff of Local Authority Social Services Departments at 30  
September 1999 2000/6
- Personal Social Services: current and capital expenditure in England: 1998-99 2000/10

**Other**

- Key Indicators of Local Authority Social Services<sup>2</sup>
- Social Services Performance in 1999-00 (The Personal Social Service  
Performance Assessment Framework)

1 (Triennial)

2 Available on CD-ROM only