

Children and Young People: Rights to Action

# Safeguarding Children in Whom Illness is Fabricated or Induced (2008)

Supplementary guidance to Safeguarding Children:  
Working Together Under The Children Act 2004



Llywodraeth Cynulliad Cymru  
Welsh Assembly Government



<b>Contents</b>	<b>Page</b>
<b>Foreword</b>	<b>5</b>
<b>1 The scope and purpose of this document</b>	<b>6</b>
Introduction	
The status of this guidance	
The role of this guidance	
An integrated approach	
A shared responsibility	
<b>2 Some lessons from research and experience</b>	<b>11</b>
Introduction	
Incidence and prevalence	
Carers' behaviours associated with fabricated or induced illness	
Responding to reported signs and symptoms	
Early history and concern about the child's health	
Impact of fabricated or induced illness on the child:	
Child death and morbidity	
Impact on the child's health and development	
The experience of the abused child	
Involvement by the child	
Age range of children	
Age at onset of symptoms	
Gender of carer responsible for the abuse	
Carers' previous histories	
Family relationships	
Long-term outcomes for carers who fabricate or induce illness	
Outcomes for children	
<b>3 Roles and responsibilities</b>	<b>20</b>
Introduction	
Health organisations:	
Local Health Boards	
NHS Trusts and the Welsh Ambulance Service NHS Trust	
Health professionals:	
Designated and named health professionals	
Paediatricians	
Consultants and other paediatricians	
Nurses midwives and health visitors	
Other health professionals	
Roles of different health services:	
Universal services	
NHS Direct, walk-in centres	
Child and Adolescent Mental Health Services	
Adult mental health services	

- Specialist assessments
- Local authorities
- Local authority children's social services
- Assessment
- Planning
- Provision of services
- Reviewing
- Local authority solicitors
- Sure Start children's centres, schools and further education institutions:
  - Identification of fabricated or induced illness
  - Management of fabricated or induced illness
- Police
- Probation services
- Voluntary and independent sectors
- Children and Family Court Advisory and Support Services (CAFCASS)
  - Cymru
- Family justice courts
- The armed services
- Children of foreign nationals

#### **4 Managing individual cases**

**40**

- Introduction
- Concerns about possible fabricated or induced illness
- Medical evaluation
- Referral
- Initial assessment under s17 of the Children Act 1989
- Next steps:
  - No suspected actual or likely significant harm
  - Suspected actual or likely significant harm
- Immediate protection
- Strategy discussion
- S47 enquiries as part of a core assessment
- Criminal investigation
- The outcome of s47 enquiries:
  - Concerns not substantiated
  - Concerns substantiated, but child not judged to be at continuing risk of significant harm
  - Concerns substantiated and child judged to be at continuing risk of significant harm
- The initial child protection conference:
  - Timing
  - Attendance
  - Information for the conference
  - Action and decisions for the conference
  - Action following the child becoming the subject of a child protection plan
- Core assessment
- Analysis of the child's circumstances and future planning
- Intervention
- Child protection review conference
- Pre-birth child protection conference
- Flowcharts

**58**

<b>5</b>	<b>Roles and responsibilities of Local Safeguarding Children Boards</b>	<b>64</b>
	Specific responsibilities of a Local Safeguarding Children Board	
<b>6</b>	<b>Working with children and families: key issues</b>	<b>66</b>
	Introduction	
	What is meant by working with children and families in safeguarding children?	
	Working with children and families	
	Involving children	
	Support, advice and advocacy to children and families	
	Information sharing	
	The Data Protection Act 1998	
	Record keeping	
	Use of covert video surveillance	
	Allegations against staff	
	Effective support and supervision	
	Inter-agency training and development	
	The purpose of inter-agency training	
	Complaints procedures	
<b>Appendix 1</b>	<b>Legislative framework</b>	<b>81</b>
<b>References</b>		<b>86</b>

## Foreword

The fabrication or induction of illness in children is a relatively rare form of child abuse. Where such concerns exist about fabricated or induced illness, it requires professionals to work together, evaluating all the available evidence, in order to reach an understanding of the reasons for the child's signs and symptoms of illness. The management of these cases requires a careful medical evaluation that considers a range of possible diagnoses. At all times, professionals need to keep an open mind to ensure that they have not missed a vital piece of information.

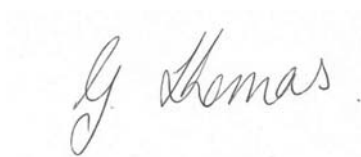
By their nature, these types of cases require expert input from a range of disciplines, in particular paediatricians. It is therefore essential that all professionals who come into contact with children whose signs and symptoms may be being fabricated or induced, are aware that this form of abuse exists. They should know what to do and who to speak to within their own organisation, or a statutory organisation such as the police or local authority children's social care services.

Professionals working across health, social care, education, schools, the police and the independent sector, should have an awareness of the possible ways in which illness can be fabricated or induced. Equally importantly, they should have an awareness of their respective roles and responsibilities and how they should work together from the point at which concerns are considered.

This guidance outlines:

- what is known about fabricated or induced illness;
- the ways in which it can be caused;
- the impact on the child's health and development;
- the roles and functions of relevant agencies; and
- the procedures that practitioners should follow where there are concerns about possible fabrication or induction of illness.

We hope that it will help professionals in the complex task of identifying those children in whom illness is being fabricated or induced, and prevent them from suffering further harm. In addition, we hope that both the children and their families will be provided with the services that are necessary to enable these children to achieve the best possible outcomes.



**Gwenda Thomas AM**  
**Deputy Minister for Social Services**  
**Welsh Assembly Government**

# 1 THE SCOPE AND PURPOSE OF THIS DOCUMENT

## Introduction

- 1.1 This document is based on *Safeguarding Children: Working Together under the Children Act 2004* (Welsh Assembly Government, 2007) and the *Framework for the Assessment of Children in Need and their Families* (National Assembly for Wales, 2001). *Safeguarding Children* sets out how all agencies and professionals in Wales should work together to safeguard and promote children's welfare. The *Assessment Framework* outlines a framework for use by all those who work with children and families, determining whether a child is in need under the Children Act 1989 and deciding how best to provide help.
- 1.2 This supplementary guidance is intended to provide a national framework within which agencies and professionals at local level – individually and jointly – draw up and agree more detailed ways of working together where illness may be being fabricated or induced in a child by a carer who has parenting responsibilities for that child. It is addressed to those who work in health, education, schools, probation, social services and the police, and all others whose work brings them into contact with children and families. It is relevant to those working in the statutory, voluntary and independent sectors. It is intended that Local Safeguarding Children Boards' (LSCBs) local safeguarding children procedures should incorporate this guidance and its references to covert video surveillance rather than having separate guidance on fabricated or induced illness in children. Within local procedures, the section on the use of covert video surveillance should make reference to the good practice advice for police officers, which is available to them from the National Crime Faculty.
- 1.3 The fabrication or induction of illness in children by a carer has been referred to by a number of different terms, most commonly Munchausen syndrome by proxy (Meadow, 1977); factitious illness by proxy (Bools, 1996; Jones & Bools, 1999); or illness induction syndrome (Gray et al, 1995). This terminology is also used by some as if it were a psychiatric diagnosis.
- 1.4 The use of terminology to describe the fabrication or induction of illness in a child has been the subject of considerable debate between professionals. These differences in the use of terminology may result in a loss of focus on the welfare of the child. In order to keep the child's safety and welfare as the primary focus of all professional activity, this guidance refers to the 'fabrication or induction of illness in a child' rather than using a particular term. If, as a result of a carer's behaviour, there is concern that the child is, or is likely to suffer, significant harm, this guidance should be followed. The key issue is not what term to use to describe this type of abuse, but the impact of fabricated or induced illness on the child's health and development, and consideration of how best to safeguard and promote the child's welfare.
- 1.5 There are three main ways of the carer fabricating or inducing illness in a child. These are not mutually exclusive and include:
  - **fabrication** of signs and symptoms - this may include fabrication of past medical history;

- **fabrication** of signs and symptoms and **falsification** of hospital charts and records, and specimens of bodily fluids - this may also include falsification of letters and documents;
- **induction** of illness by a variety of means.

Examples of the types of abusive behaviours exhibited are further elaborated in paragraph 2.6; paragraph 4.5 sets out the types of situations that might cause concerns about a child's welfare.

- 1.6 The term 'carer' is used to mean 'parent or carer', ie any adult who is exercising parenting responsibilities for a child. Those with parenting responsibilities may include, for example, grandparents, foster parents, and child minders, as well as those who have parental responsibility as defined in the Children Act 1989. In situations where a staff member is suspected of causing harm to a child by inducing or fabricating illness, the procedures set out in Chapter 12 of *Safeguarding Children* should be followed.

### **The status of this guidance**

- 1.7 This guidance, issued by the Welsh Assembly Government, is supplementary to *Safeguarding Children (2007)*, and should be followed in conjunction with the main guidance. All assessments should be undertaken in accordance with the *Assessment Framework*; where appropriate, paragraphs are cross-referenced to *Safeguarding Children* and the *Assessment Framework*.
- 1.8 This guidance is issued under Section 7 of the Local Authority Social Services Act 1970, which requires local authorities in their social services functions to act under the general guidance of the National Assembly for Wales in Wales. Local authorities should comply with it when carrying out their social services functions, unless local circumstances indicate exceptional reasons that justify a variation. This guidance is also issued under s34 of the Children Act 2004, which states that children's services authorities and each of their Board partners, in exercising their functions in relation to LSCBs, must have regard to any guidance given to them by the National Assembly for Wales for that purpose.
- 1.9 Where this document is not statutory guidance for a particular organisation, it still represents a standard of good practice and will help organisations to fulfil their duties in co-operation with partners. For example, managers and staff with particular responsibilities in the organisations covered by the duty to safeguard and promote the welfare of children (s28 of the Children Act 2004), are encouraged to read this document and follow it in conjunction with s28 guidance. The same principle applies to educational institutions with duties under s157 and s175 of the Education Act 2002 regarding safeguarding and promoting the welfare of children.

### **The role of this guidance**

- 1.10 Processes and procedures are never ends in themselves, but should always be used as a means of bringing about better outcomes for children. No guidance can, or should, attempt to offer a detailed prescription for working with each child and family. Working with children and families where there are concerns about a child's welfare is sensitive and difficult. Work in situations where illness



- has been fabricated or induced can be very stressful. Good practice calls for effective co-operation between different agencies and professionals; sensitive work with parents and carers in the best interests of the child; and the careful exercise of professional judgement, based on thorough assessment and critical analysis of the information available.
- 1.11 In 2002, the Royal College of Paediatrics and Child Health published *Fabricated or Induced Illness by Carers*. This report describes the role of paediatricians and other child health care professionals, and recommends how they should work with professionals from other agencies. The Royal College's report informed the development of this guidance and provides more in-depth information for professionals, particularly those in health. The College's report is currently being updated to take account of revised guidance and recent clinical developments.
- 1.12 In 2000, the *Report of a review of the research framework in North Staffordshire Hospital NHS Trust* (Department of Health, 2000b) was published. It called for a wide range of measures to improve research governance across the NHS. In addition, it recommended the development of guidelines to assist in the identification of children who have had illnesses fabricated or induced by their carer. The Department of Health responded to this later recommendation with a commitment to produce ....*“new guidelines for professional practice and inter-agency working in responding to concerns that a child may be having illness fabricated or induced by a carer. These guidelines will be drawn up within the framework of Working Together to Safeguard Children: a guide to inter-agency working to safeguard and promote the welfare of children (1999)....”* The first edition of the guidance, issued in 2002, has now been updated following the publication of the revised *Safeguarding Children: Working Together under the Children Act 2004* guidance.
- 1.13 This guidance suggests that where there is any potential for the use of covert video surveillance, the police should be informed and, within the multi-agency team, take the lead in co-ordinating such action (see paragraphs 6.34 – 6.39). All action should be undertaken in accordance with the LSCB safeguarding children procedures. Legal advice should be sought where there is any doubt about the use of covert video surveillance.

### **An integrated approach**

- 1.14 Children have varying needs that change over time. Judgements on how best to intervene when there are concerns about harm to a child will often and unavoidably entail an element of risk – the two extremes being leaving a child for too long in a dangerous situation or removing a child unnecessarily from their family. The way to proceed in the face of uncertainty is through competent professional judgements based on a sound assessment of the child's needs, the parents' capacity to respond to those needs – including their capacity to keep the child safe from significant harm – and the wider family circumstances (*Safeguarding Children*).
- 1.15 Effective measures to safeguard children cannot be seen in isolation from the wider range of support and services available to meet the needs of children and families:

- Many of the families in which a child has had illness fabricated or induced have experienced a number of stress factors in their lives. Providing services and support to these children and families may strengthen the capacity of parents to respond to the needs of these children before they reach the point where their reaction to their difficulties is to fabricate or induce illness in their child.
- Enquiries under s47 of the Children Act 1989 may reveal significant unmet needs for support and services among children and families, particularly in relation to the needs of the parents and the way in which the family members relate to each other. These should always be explicitly addressed if the family member so wishes, even where concerns are not substantiated about significant harm to a child.
- If safeguarding children processes are to result in improved outcomes for children, then effective plans for safeguarding and promoting each child's welfare should be based on a wide ranging assessment of the needs of the child and their family circumstances, taking account of past histories of all family members.
- All work with children and families should retain a clear focus on the welfare of the child. Just as safeguarding children processes should always consider the wider needs of the child and family, so broad-based family support services should always be alert to, and know how to respond quickly and decisively to, potential indicators of illness being fabricated or induced in a child.

### **A shared responsibility**

- 1.16 Safeguarding and promoting the welfare of children depends crucially upon effective information sharing, collaboration and understanding between agencies and professionals. These relationships may become strained where there are concerns that illness is being fabricated or induced in a child and there are difference of opinion about how best to safeguard the child's welfare, or indeed if the child is being abused. Constructive relationships between individual workers should be supported by a strong lead from elected or appointed authority members and the commitment of senior officers from each agency.
- 1.17 At the strategic level, agencies and professionals should co-operate with each other and involve service users, to plan comprehensive and co-ordinated children's services that have the capacity to respond to the identified needs of children. Children who have had illness fabricated or induced, and their families, are likely to require specialised services, some of which may not be available locally and will have to be secured from either regional or national resources. One case can make considerable demands on an agency's available resources. On these rare occasions, senior managers should be involved in deciding how to allocate the resources deemed necessary to bring about the best outcomes for the child.

- 1.18 Children who have had illness fabricated or induced are likely to require co-ordinated help from a range of agencies such as health, social services (adults and children), education, schools and the voluntary and independent sectors over a sustained period of time. The nature of this input is likely to change as the child develops and his or her needs change. Therefore, over time, the types of services required may differ considerably.
- 1.19 For those children who are suffering, or at risk of suffering, significant harm, joint working is essential to safeguard the welfare of children and, where necessary, to take action, within the criminal justice system, regarding the perpetrators of crimes against children. In using this guidance, all agencies and professionals should:
- be alert to potential indicators of illness being fabricated or induced in a child;
  - be alert to the risk of harm that individual abusers, or potential abusers, may pose to children in whom illness is being fabricated or induced;
  - share and help to analyse information so that an informed assessment can be made of the child's needs and circumstances;
  - contribute to whatever actions (including the cessation of unnecessary medical tests and treatments) and services are required to safeguard and promote the child's welfare;
  - regularly review the outcomes for the child against specific planned outcomes;
  - work co-operatively with parents, unless to do so would place the child at increased risk of harm; and
  - assist in providing relevant evidence in any criminal or civil proceedings, should this course of action be deemed necessary.

## **2 SOME LESSONS FROM RESEARCH AND EXPERIENCE**

### **Introduction**

- 2.1 Our knowledge and understanding of children's welfare – and how to respond in the best interests of a child to concerns about abuse and neglect – develop over time, informed by research, experience and the critical scrutiny of practice. Sound professional practice involves making judgements, supported by evidence derived from research and experience, about the nature and impact of abuse and neglect, and when and how to intervene to improve outcomes for children. Judgements can also be supported by information derived from a thorough assessment of a specific child's health, development and welfare, parental capacity and his or her family circumstances.
- 2.2 This chapter begins by reporting research findings on the incidence and prevalence of illness being fabricated or induced in a child by a carer, and describes some of the types of behaviours exhibited by carers that can be associated with illness fabrication or induction. It goes on to summarise available research findings and practice experience specific to this type of abuse, and concludes with what is known about how best to secure optimal outcomes for children in whom illness has been fabricated or induced.

### **Incidence and prevalence**

- 2.3 The fabrication or induction of illness in a child by a carer has been considered to be rare (however, see below). McClure et al (1996) carried out a two-year study to determine the epidemiology of Munchausen syndrome by proxy, non-accidental poisoning and non-accidental suffocation in the UK and the Republic of Ireland. They analysed data from 128 confirmed cases notified to the British Paediatric Association Surveillance Unit during the period September 1991 to August 1994. Based on this data, the researchers estimated that the combined annual incidence in the British Isles of these forms of abuse in children under 16 years of age was at least 0.5 per 100,000, and for children aged under one at least 2.8 per 100,000. The authors calculated that "in a hypothetical district of one million inhabitants therefore, the expected incidence would be approximately one child per year".
- 2.4 This study showed that reported rates of fabricated or induced illness varied greatly between different health service regions and the researchers suggested it was under-reported nationally. At the time of their study, their findings also suggested that paediatricians considered that the identification had to be virtually certain before a child protection conference is initiated. Thus, a number of cases may be unrecorded because of the absence of irrefutable evidence in situations where the level of concern about harm to the child is extremely high. The cases may also present in ways that result in unnecessary medical interventions, for example where symptoms are verbally reported to surgeons who then carry out operations without questioning the basis of the information. Consequently, the estimate of one child per one million head of population is likely to be an under-estimate.

## **Carers' behaviours associated with fabricated or induced illness**

- 2.5 Carers exhibit a range of behaviours when they wish to convince others that their child is ill. A key professional task is to distinguish between the very anxious carer who may be responding in a reasonable way to a very sick child and those who exhibit abnormal behaviour (see paragraphs 4.1 – 4.3). Such abnormal behaviour in a carer can be present in one or both carers and often involves passive compliance of the child (see paragraph 2.22). These carer behaviours may constitute ill-treatment (s31(9) of the Children Act 1989).
- 2.6 The following list of behaviours exhibited by carers that can be associated with fabricating or inducing illness in a child is not exhaustive and should be interpreted with an awareness of cultural behaviours and practices that can be mistakenly construed as abnormal behaviours:
- Deliberately inducing symptoms in children by administering medication or other substances, by means of intentional transient airways obstruction, or by interfering with the child's body so as to cause physical signs.
  - Interfering with treatments by over-dosing with medication, not administering them or interfering with medical equipment such as infusion lines.
  - Claiming the child has symptoms that are unverifiable unless observed directly such as pain, frequency of passing urine, vomiting, or fits. These claims result in unnecessary investigations and treatments that may cause secondary physical problems.
  - Exaggerating symptoms that are unverifiable unless observed directly, causing professionals to undertake investigations and treatments that may be invasive, are unnecessary and are therefore harmful and possibly dangerous.
  - Obtaining specialist treatments or equipment for children who do not require them.
  - Alleging psychological illness in a child.
- 2.7 When a child is in hospital, it is usual for carers (usually the child's parents) to be very involved in the care of their child, including participating in medical tests, taking temperatures and measuring bodily outputs. Where illness is being fabricated or induced by a carer, these normal hospital practices afford the carer the opportunity to continue this behaviour. This may mean, for example, that treatments and tests may be interfered with and the reported signs and symptoms continue whilst the child is in hospital. Differences may be observed between the ways in which carers who fabricate or induce illness interact with their children compared with other carers. Commonly, these carers are observed to be intensely involved with their children, never taking a much needed break, nor allowing anyone else (either family members or professionals) to undertake any of their child's care. This behaviour may preclude adequate observation of the child. Some, however, spend little time interacting with their child. They may be very involved with other families on

the ward and hospital staff, rather than with their child. Another observed feature is that some carers appear unusually concerned about the results of investigations that may be indicative of a serious physical illness in the child.

### **Responding to reported signs and symptoms**

- 2.8 The majority of cases of fabricated or induced illness in children are confirmed in a hospital setting because either medical findings or their absence provide evidence of this type of abuse.

### **Early history and concern about the child's health**

- 2.9 A significant number of children in whom illness is fabricated or induced will have been well known to health professionals from birth. Some also suffer from a verified acute or chronic medical condition. Some may previously have been seriously ill, for example as a consequence of pre-maturity, while others may have had minor problems at birth or in their first few months of life. Consideration should be given to the possibility that the obstetric complications themselves may have been due to the mother interfering with her pregnancy to induce a premature birth (Jureidini, 1993). Children may also have experienced other forms of abuse, for example physical abuse or neglect, prior to the identification of fabricated or induced illness (Bools et al, 1992).
- 2.10 Children in this group often present with, or have past history of, both genuine and perceived feeding difficulties, faltering growth and reported allergies (Bools et al, 1992; Gray and Bentovim, 1996; Rosenberg, 1987).
- 2.11 At the point that fabrication or induction of illness is confirmed, the child may have organic problems that will require ongoing medical treatment. These may pre-date the abuse or be a consequence of it. It can be difficult to identify retrospectively the origins of a child's medical problems, but following identification of fabricated or induced illness, treatment for medical conditions should be undertaken as part of the child's overall plan.
- 2.12 The medical histories of this group of children are likely to have started early, and in many instances will have become extensive by the time the suspected abuse is identified. Some children may have been referred to a tertiary paediatric centre because they were thought to have a serious or rare illness requiring expert diagnosis and treatment. They may have been seen at many hospitals in different geographical areas and by a number of professionals. They may also have been seen in centres for alternative medicine or by private practitioners.

### **Impact of fabricated or induced illness on the child**

#### ***Child death and morbidity***

- 2.13 International research findings suggest that up to 10% of these children die, and about 50% experience long-term consequent morbidity. In the British Isles study referred to above, McClure et al (1996) found 8 out of 128 (6%) children died as a direct result of abuse. A further 15 (12%) required intensive care, and an additional 45 (35%) suffered major physical illness, again as a result of abuse. The way in which a child's circumstances are managed will impact on

their outcomes, but the lives of some who present at hospital in a life-threatening situation, for example having been poisoned, might not be able to be saved.

- 2.14 In the McClure et al study, 83 (65%) of the 128 index children had at least one sibling and, of these, 15 (12%) had a sibling who died previously (a total of 18 deaths). 5 (4%) of these deaths had been classified as sudden infant deaths. Information about the death of a sibling, or previous abuse of siblings, may only become known to professionals after a family history has been collated. At the time of death, some may have been unexplained or ascribed to natural causes, while others may have been known to have occurred as a result of abuse. Previous reported physical abuse of siblings is common in this group of children and previous abuse may have included the fabrication or induction of illness. A child may be considered to be at risk of significant harm because of abuse inflicted on siblings, or the death of siblings due to abuse.

### ***Impact on the child's health and development***

- 2.15 Many of the children who do not die as a result of having illness fabricated or induced suffer significant long-term consequences. These may include long-term impairment of their physical, psychological and emotional development.
- 2.16 Fabrication or induction of illness may not necessarily result in the child experiencing physical harm. Where children have not suffered physical harm, there may still be concern about them suffering emotional harm. Concerns about children being brought up in a fabricated sick role are further discussed in paragraph 2.21. Children may also suffer emotional harm as a result of an abnormal relationship with their mother (if she is responsible for the abuse) and their disturbed family relationships (see paragraphs 2.32 and 2.33).
- 2.17 In their follow-up study of 54 children who were known to have had illness fabricated or induced, Bools et al (1993) found a range of emotional and behavioural disorders, and school-related problems including difficulties in attention and concentration, and non-attendance. These difficulties were present both in children who were living with their abusing parent and those who had been placed with alternative carers. This suggests the need for treatment regimes that specifically address the child's ongoing needs throughout childhood. McGuire and Feldman (1989) also reported a range of disorders in children known to have had illness fabricated or induced. These included feeding disorders in infants; withdrawal and hyperactivity in pre-school children; and direct fabrication or exaggeration of their own physical symptoms by older children and adolescents.
- 2.18 Whilst it is well documented that children who have been abused or neglected are likely to suffer impairment to their health and development, it cannot be assumed that all children suffering impairment have been abused. Where there are concerns about the reasons for a child's developmental delay, it is important to clarify the contributing factors and identify any underlying conditions. For some children, the origins of their impairment or disability may be very complex, with an underlying medical or developmental condition being further impaired by abuse or neglect. In these circumstances, detailed assessments are required to understand cause and effect (for further

discussion, see Chapter 4: *The Spectrum of Signs and Symptoms*, Royal College of Child Health and Paediatrics, 2002).

### ***The experience of the abused child***

- 2.19 Where illness is being fabricated or induced, extensive, unnecessary medical investigations may be carried out in order to establish the underlying causes for the reported signs and symptoms. The child may also have treatments prescribed or operations that are unnecessary. These investigations can result in children spending long periods of time in hospital and some, by their nature, may also place the child at risk of suffering harm or even death.
- 2.20 Nearly all affected children undergo many unpleasant investigations and/or treatments, but many children, especially young children, who have had illness fabricated or induced, may not be fully aware of the nature of their abuse. Few studies have sought children's views on this matter, but Neale et al (1991), through their interviews with children, found that many had not been able to disclose the nature of their abuse. This was partly because of the skill of their mothers (the perpetrators) in teaching the children to present a rosy picture to the external world whilst they were being subjected to extensive physical and emotional abuse at home. Even after disclosure of the abuse and placement with alternative carers, some still wanted continued contact with them.
- 2.21 Some children are confused about the state of their health. Many are preoccupied with anxieties about their health and survival and may express suicidal thoughts as a result of their despair. Older children and adults who have been abused in this way may come to feel anger at their betrayal by their parent(s) and a lack of trust in those caring for them, including medical professionals.

### ***Involvement by the child***

- 2.22 In children who have had illness fabricated or induced, there seems to be a continuum of involvement with their carer, from naivety through to passive acceptance, actual participation and active self-harm (Sanders, 1995). Some children, particularly those who are older, may learn to collude with their carer in the management of a non-existent condition before eventually fabricating or inducing illness in themselves or developing a somatisation disorder. Such children can continue to be dependent on their carer and use him or her as a reference point for their own state of health. As a consequence of this dependency, some may lose the ability in childhood to identify true illness and become unable to act appropriately if they are ill. Some older children and adults feel guilty for their perceived collusion. So, just as with other forms of child abuse, the effects of illness having been fabricated or induced may impact on a child for life.

### ***Age range of children***

- 2.23 The age range of children in whom illness is fabricated or induced extends throughout childhood, although it is most commonly identified in younger children. In the McClure et al study, 77% of children were aged under five years at the time of identification, with a median age of 20 months.



## **Age at onset of symptoms**

- 2.24 The age of the child when the fabrication or induction begins is usually much younger than when the abuse is identified because of the length of time it normally takes to identify this type of abuse. Schreier & Libow (1993), in their survey of 362 cases, found that the average length of time to identification was greater than six months in a third of the cases, and more than a year in a fifth of the cases. Experience indicates that the duration may be of several years.

## **Gender of carer responsible for the abuse**

- 2.25 Clinical evidence indicates that fabricated or induced illness is usually carried out by a female carer (usually the child's mother). Fathers and women other than the mothers have also been known to be responsible (Makar & Squier, 1990; Samuels et al, 1992). It is common in these latter cases for the adult to have undertaken significant responsibility for providing much of the child's daily care.
- 2.26 Therapeutic work undertaken with families has revealed the extent to which both mothers and fathers were involved in perpetuating the belief that the child was seriously ill. It is therefore not appropriate to always consider the fathers to be mere bystanders in the process of illness induction: their role in each particular family system must be understood as part of the assessment process (Griffith, 1988; Manthei et al, 1988).

## **Carers' previous histories**

- 2.27 There is no evidence to support a unique profile of carers who fabricate or induce illness in their children. There is, however, evidence that as with many parents who abuse or neglect their children, specific aspects of their histories are likely to have been troubled. A careful assessment is required to understand the contribution that their past experiences have made to the child's illness fabrication or induction, and the impact that past events may be having on their current ability to care for their child.
- 2.28 The child's carers, who are usually their parents, may have histories of having experienced childhood abuse or privation. This can include all forms of abuse, including emotional abuse (Bools et al, 1994; Samuels et al, 1992).
- 2.29 The parents may also have considerable medical and psychiatric histories that may or may not be able to be verified independently. The same may be so in relation to the obstetric history of the mother. This information may not be easily accessible and considerable effort may be required to gather it together into a detailed chronology.
- 2.30 Reported features of the parents' health histories include:
- **Physical health** – a significant number of parents are likely to report having experienced genuine medical problems. They may or may not have been substantiated by medical investigations. They may also have a history of inflicting deliberate self-harm. The mothers may have a complicated obstetric history. For some mothers, there may have been professional concern about them causing their own miscarriages.

- **Psychiatric history** – a significant number of parents will have been assessed or treated for mental health problems. Following a formal psychiatric assessment, some may have been diagnosed with a personality disorder, but others may have no diagnosable psychiatric disorder (Bass & Adshead, 2007). Paragraphs 3.47 and 3.48 on adult mental health explore this area in more depth.
- 2.31 Parents also report having suffered a number of significant bereavements or losses in their lives, with these often having taken place within a relatively short time span (Gray & Bentovim, 1996). The bereavements may be of significant adults in their lives (a parent or other supportive family member), of offspring by miscarriage, stillbirth or child death, and the loss of a partner through divorce or separation.

### **Family relationships**

- 2.32 Relationship problems between the child's parents are common, although they may not have been acknowledged prior to child welfare concerns being raised. Similarly, a number of parents may have experienced problems associated with taking on the role of parenthood. These may have been presented early on in their parenting careers.
- 2.33 In families where it has been identified that a child's illness has been fabricated or induced, these past problems are often revealed in the course of an assessment or therapeutic work. However, professionals with responsibility for the child's health care may not have been aware of this.

### **Long-term outcome for carers who fabricate or induce illness**

- 2.34 There is no systematic research information available on the long-term outcomes for those carers who have received therapeutic help following identification of them fabricating or inducing illness in a child (Bluglass, 2001; Brooke & Adshead, 2001). Some information is available from individual case studies (Nicol & Eccles, 1985; Black & Hollis, 1996; Coombe, 1995), and indirectly from research on outcomes for children. This means that decisions about the child's safety have to be made on a case by case basis, drawing on professionals' knowledge base about the abuse or neglect of children.

### **Outcomes for children**

- 2.35 There has been little research undertaken on the longer-term outcomes for children in these circumstances, but the evidence available suggests that outcomes have been poor for many children who had illness fabricated or induced. In one such study, a cohort of 54 children who had experienced attempted suffocation, poisoning or having symptoms such as seizures fabricated, was followed up on average 5.6 years after the abuse had been identified (Bools et al, 1993). 30 of the children were living with their mother - the abuser – and 24 were in alternative care, either with family members or foster carers. Among the 30 children living with the original abuser, a third had had further illness fabricated, and there were significant other types of concerns about another third of the children. Many children placed in new families also suffered from psychological disorders, in many cases a continuation of an

earlier disorder. The difficulties of five children where suffocation had been attempted were clearly related to their previous abusive experiences. Nearly half of the children had unacceptable outcomes, including conduct and emotional disorders and difficulties at school, including non-attendance, in addition to re-abuse. An analysis of the findings from this study indicated that at follow-up, where children were being cared for by their mothers (who had been responsible for the abuse), a greater proportion of those who had an acceptable outcome had experienced a period in foster care following identification of the abuse, compared with those who remained continuously with their mother.

- 2.36 In Davis' follow-up study (median of 2 years) of children reported to have had an illness induced, none of their signs and symptoms had subsequently been found to be due to intrinsic organic disease (Davis et al, 1998). At follow-up, 40% of the children were living at home with the abusing parent, but only 24% of those where they had been poisoned and only 10% of those where suffocation had been intentionally attempted. 33% of the children still had their names on the child protection register and 24% still had signs and symptoms due to fabricated or induced illness. 17% of those who had not suffered direct physical harm had nevertheless subsequently suffered further abuse.
- 2.37 The Park Hospital group (Berg & Jones, 1999) has reported the outcome of work with a consecutive series of 17 children and their families who were submitted to its inpatient family unit after the abuse had been identified. In 13 of the 17 cases selected on the basis of the likelihood of successful intervention, therapeutic work was undertaken to establish whether the child could be re-united with their family. Of these, it was recommended that 10 children should be reunited with their natural parents and three should be placed in alternative care, as it was not considered sufficiently safe for them to return home. All these recommendations were followed and, at an average of 27 months after discharge from the unit, the children had done well overall in terms of their development, growth and adjustment; one child who had been re-abused by her mother was subsequently being cared for solely by her father. From this follow-up study, it has been "cautiously concluded that family reunification is reasonable to attempt for a selected sub-group of cases of factitious illness by proxy but, where this is attempted, long-term follow-up is necessary in order to ensure that psychological maltreatment does not occur, and that the parents' mental health is monitored" (Berg & Jones, 1999).
- 2.38 Another study found that there was evidence of good outcomes for children where the child's safety had been addressed and long-term therapeutic work had been undertaken with families. This work was based on the findings of an assessment that identified the changes required in the family system for the child to be safe and achieve his or her optimal health and developmental milestones (Gray et al, 1995). These good outcomes occurred where cases were managed within a child protection framework; therapeutic interventions were focused on the protection of the child; a thorough assessment was undertaken of the family's functioning and its ability to change and protect the child; and clear decisions were made about whether the child was able to live with both parents or the non-abusing parent, or be placed in an alternative family context.

2.39 In summary, following identification of fabricated or induced illness in a child by a carer, the way in which the case is managed will have a major impact on the developmental outcomes for the child. The extent to which the parents have acknowledged some responsibility for fabricating or inducing illness in their child will also affect these outcomes for the child.

### **3 ROLES AND RESPONSIBILITIES**

#### **Introduction**

3.1 A clear understanding of the roles and responsibilities of organisations and practitioners is essential for effective collaboration. These are set out in Chapter 2 of *Safeguarding Children*. This chapter outlines the main roles and responsibilities of statutory agencies, professionals, the voluntary and independent sectors, and the wider community in relation to circumstances where illness has been fabricated or induced in a child by a carer. Joint working should extend across the planning, management, provision and delivery of services. This chapter does not stand alone and, in particular, should be read in conjunction with Chapters 1 and 4 of this document.

#### **Health organisations**

##### ***Local Health Boards (LHBs)***

3.2 LHBs' membership of LSCBs will enable them to satisfy themselves that local arrangements provide support for local health professionals in dealing with this sensitive and difficult area of work, and that local health service arrangements are in place to respond appropriately to all cases, or suspected cases, of fabricated or induced illness.

3.3 Support should be made available:

- for advice via the designated and named doctors and nurses in managing such cases;
- if covert video surveillance is to be used, eg for funding of additional support staff and suitable rooms;
- for the staff involved, including ensuring their protection and ongoing support of necessary (the impact of identifying and working with such cases can be extremely stressful);
- in the preparation of an appropriate media handling strategy (which should be undertaken in conjunction with other agencies involved).

##### ***NHS Trusts and the Welsh Ambulance Service NHS Trust***

3.4 Children with suspected fabricated or induced illness may present to the full range of medical specialists. This is most likely to be a general paediatrician or paediatricians providing specialist care, but may also include general, orthopaedic and paediatric surgeons, surgical specialities, ie ENT, ophthalmology, orthopaedics, gynaecology and dermatology. Concerns may be raised by services to which the children present, including pharmacists and professionals allied to medicine. In addition, carers of children may be in receipt of adult services and the professionals involved in their care may have concerns about the welfare of these children. This could include professionals providing obstetric and gynaecological care to women, mental health services and the full range of medical and surgical specialities. It is important that any concerns about the children's welfare are not conveyed to the carers until further assessment and multi-disciplinary decisions have been made about how and by whom these will be discussed with both the child's parents. Every trust

should have a named doctor and nurse/midwife, or professional in the case of ambulance trusts, with whom professional staff should liaise if they have concerns about a child's welfare.

- 3.5 In a very small number of cases, the use of covert video surveillance may be suggested. Decisions about its use should take place at a strategy discussion between relevant agencies and, in particular, the police, children's social services, the consultant paediatrician responsible for the child's health care and the senior ward nurse. Senior officers of the relevant NHS Trusts should also be involved. The chief executive of the Trust should be kept informed of any decisions to apply to use covert video surveillance in their trust (see paragraphs 6.34 – 6.39 on covert video surveillance).
- 3.6 Where it has been decided (at a strategy discussion) to carry out covert video surveillance because of the nature of concerns about how the child is suffering, or is likely to suffer, significant harm, the police should undertake this action.

### **Health professionals**

- 3.7 All health professionals in the NHS or private sector may come across illness being fabricated or induced in a child. Personnel in these services are well placed to note the number of presentations of a child, and the manner and circumstances in which these children present. It is essential that health professionals, whether working with children or adults, should familiarise themselves with the various presentations of this type of child abuse. Health professionals may also identify a carer who is fabricating or inducing illness in themselves. In these circumstances, they should consider whether any child(ren) of this adult is/are having their health or development impaired.
- 3.8 All health personnel should be familiar with their LSCB safeguarding children procedures and, in particular, know who to contact when they have child welfare concerns (see Chapter 4). Close multi-disciplinary and inter-agency working is essential in these cases (Royal College of Paediatrics and Child Health, 2002).
- 3.9 Once a health practitioner has suspicions that fabricated or induced illness is being presented, he or she should consult the clinical manager (who has lead responsibility for contacting children's social services or the police). The named doctor or nurse should be contacted for support and advice, but if unavailable, the designated doctor or nurse should be contacted. All health professionals should keep detailed notes of these discussions.
- 3.10 Health practitioners should not normally discuss their concerns with the parents/carers at this stage.
- 3.11 LSCB safeguarding children procedures should be followed. Children's social services should be informed of these concerns at the earliest possible opportunity. They have lead responsibility for undertaking an initial assessment and, if appropriate, should convene a strategy discussion. This discussion will determine subsequent actions that should be strictly adhered to and regularly reviewed.

- 3.12 Where there are suspicions that the parents are fabricating or inducing illness, and the child is in hospital, it is important to appropriately secure and date relevant equipment, eg syringes, feeding equipment and food/drink samples etc for police investigation.
- 3.13 For all children, it is essential that careful and complete notes are kept at every stage, together with the reasons why decisions are taken. For example, not to inform the parents of concerns during particular periods in time in order to prevent the child suffering harm (see paragraphs 6.24 – 6.33 on record keeping).
- 3.14 If a child protection conference is convened, information should be shared and discussed in order to inform decision making about how best to promote and safeguard the child's welfare.

### ***Designated and named health professionals***

- 3.15 Each LHB has access to a designated doctor and designated nurse to support professionals through the National Public Health Service. Further details about the role can be found in Chapter 2 of *Safeguarding Children*. These professionals are key to providing advice and support to named professionals and for staff dealing with cases of fabricated or induced illness, or suspected cases, as well as promoting, influencing and developing training on this issue.
- 3.16 All NHS Trusts providing services for children should identify a named doctor and a named nurse/midwife for safeguarding. In the case of NHS Direct, ambulance trusts and independent providers, this should be a named professional. Further details about the role can be found in Chapter 2 of both *Safeguarding Children*. These professionals are a source of advice and support for staff dealing with cases of fabricated or induced illness, or suspected cases, within their own organisation.

### ***Paediatricians***

- 3.17 At some time, all consultant paediatricians are likely to be faced with a child where they suspect some or all of their signs and symptoms of illness are being fabricated or induced by a carer. This may include children referred to them or children with whom they are already involved. Whenever such concerns arise, the consultant responsible for the child's health care, ie the responsible paediatric consultant should take lead responsibility for all decisions about the child's health care. These should **not** be delegated to a more junior member of staff, although they may be involved in the process of assessment and subsequent management under the consultant's supervision. This lead responsibility should include getting information from any relevant GPs or consultants who have treated the child. Where there are concerns about a child's safety and welfare, discussion with children's social services can be on the basis of suspicion of significant harm – it does not have to be proved before contacting children's social services. Referrals can also be made because the child is considered to be a child in need under s17 of the Children Act 1989.
- 3.18 The responsible paediatric consultant should consult the named doctor about safeguarding concerns and keep him or her informed in the process. If the consultant is him/herself the named doctor, they are advised to consult with the

- designated doctor. Discussions with a senior colleague in children's social services may also be helpful in deciding whether and when a referral should be made.
- 3.19 The Royal College of Paediatrics and Child Health report on *Fabricated or Induced Illness by Carers* (2002) provides specific advice for paediatricians and other health professionals. In particular, Chapter 5, *Medical Evaluation: Procedures and Management*, should be followed in conjunction with this guidance when there are concerns about fabricated or induced illness in a child.
- 3.20 The responsible paediatric consultant should ensure a high standard of record keeping (paragraphs 6.24 – 6.33) and ensure that records are kept secure at all times.
- 3.21 In any case of suspected of fabricated or induced illness, it is essential to carefully review the child's medical history (see paragraph 6.21 on health professionals sharing information with each other). This should include reviewing all available medical notes and liaising with the child and family members' GP(s) and health visitor(s) or school nurse. If there are separate child health records, these should be assessed and consideration given to making enquiries of other local hospitals (it is not unknown, particularly in an urban area, for a child to be under the care of more than one hospital). Likewise, if the family has recently moved, contact should be made with the paediatric and emergency care services in the previous area. The named doctor for the trust from which notes are being sought can often facilitate this process. The drawing up of a detailed medical chronology is most important and will often confirm whether or not concerns of possible fabricated or induced illness require further evaluation, and the urgency with which these should be undertaken. It can also help to identify undiagnosed medical conditions. The organisations' named health professionals for safeguarding children can be a valuable source of support in undertaking this.
- 3.22 It may be helpful to invite a colleague, not involved in the clinical care of the child, to discuss the case on an anonymous basis and/or review the notes, or to give an opinion as to whether any organic condition may have been overlooked. Likewise, a general or community paediatrician may wish to discuss the case with a paediatrician who has knowledge and experience of relevant rare disorders.
- 3.23 Clinical medical directors of paediatric services should ensure robust arrangements are in place in their trusts. This will enable consultant paediatricians to have access to teams within their trust and across to other clinical networks outside their organisations, to discuss clinical concerns about identification, diagnosis and clinical management of cases of fabricated or induced illness.
- 3.24 Where the consultant has reasonable cause to suspect that a child is suffering, or likely to suffer, significant harm, a referral should be made to children's social services (see paragraph 3.9 of this guidance). For referrals from a tertiary hospital in which the child is an in-patient, this will be to children's social services local to the hospital (unless specific other local arrangements are in place between the neighbouring children's social services). This may not be



the same local authority in which the child resides. If the child is an inpatient in a hospital outside their local authority area, children's social services local to the hospital has a responsibility to liaise with the appropriate one. A local authority may already be involved with the child as a 'child in need', or have had involvement in the past with either the child or other family members and know the family well. Equally, there may have been no previous involvement.

### ***Consultants other than paediatricians***

- 3.25 There may be occasions where concerns arise regarding fabricated or induced illness, where children or young people are under the care of consultants who are not paediatricians. As in all cases where there are child protection concerns, referral to a paediatrician should be made, as set out in local policies and procedures. In the case of young people aged 16 –18, the named or designated doctor may be able to advise about an appropriate referral.

### ***Nurses, midwives and health visitors***

- 3.26 Fabricated or induced illness is an aspect of maltreatment of which all nurses, midwives and health visitors working in any setting should be aware. In the course of their work, they may be in a position to recognise its signs and symptoms and risk factors.
- 3.27 Where a nurse, midwife or health visitor has concerns that a carer is impairing a child's health and development by fabricating or inducing illness, they should explore the presenting information to see where it is on the continuum from parental concern, over-anxiety, through to suspected significant harm. In cases where fabricated or induced illness is suspected, safeguarding children processes should be followed in accordance with Chapter 4 of this guidance.
- 3.28 Advice and support should be sought wherever possible from designated and named nurses/midwives for safeguarding. It is also available from children's social services. All referrals should be made in accordance with LSCB safeguarding children procedures and local trust policies.
- 3.29 The nurse, midwife or health visitor may observe unusual behaviour or unexplained incidents. An accurate, contemporaneous and secure record of actual or inferred physical or behavioural observations should be kept (see paragraphs 6.24 – 6.33 on record keeping).
- 3.30 During the course of an assessment, the nurse may be responsible for the collection of specimens such as urine or faeces. These should be collected and sent off for analysis in such a way that they cannot be interfered with (for further information, see Section 5.3 *Medical Evaluation of Symptoms and Signs* in the report of the Royal College of Paediatrics and Child Health, 2001).
- 3.31 Nursing, midwifery or health visiting assessments will contribute to the initial and core assessments (see paragraphs 5.24 and 5.35 of the *Assessment Framework*), by defining any known problems that the family is experiencing, and understanding if and how these problems have contributed to the maltreatment of the child.

3.32 When midwives are contributing to an assessment, information obtained at booking should be carefully analysed. This could include:

- the contents of the GP's referral letter (where applicable);
- information given by the mother, particularly if the woman gives a history of inexplicable illnesses; unusual complications of pregnancy; unexpected deaths in the family; family members with untreatable illnesses; her children having complicated medical histories; histories of failure to thrive or non-accidental injuries; and if signs and symptoms reported by the mother are not observed by the midwife; and
- information that is available from previous maternity case notes.

### ***Other health professionals***

3.33 All other health professionals, whether working with children or adults who are parents, or have parenting responsibilities, should be aware of the LSCB safeguarding children procedures. A range of professionals working in health care settings, for example pharmacists, physiotherapists, occupational therapists, speech and language therapists, nursery nurses and play specialists, will have important roles to play in identifying and managing fabricated or induced illness in children. If, in the course of their work, these professionals have concerns about illness being fabricated or induced by a carer, they should discuss these with their clinical manager or, if the child has been referred to them, with the referring doctor. All health professionals should have access to further advice from the trust's named doctor or nurse/midwife.

3.34 Some health professionals may already be working with a child when the concerns are raised, and be part of the initial assessment and decision making processes; some may become involved subsequently, often in a more in-depth assessment of the child's needs and the provision of services. Professionals such as physiotherapists, speech and language and occupational therapists, nursery nurses or play specialists are likely to be closely involved where a child's developmental progress has been impaired as a result of their illness fabrication or induction.

### **Roles of different health services**

#### ***Universal services – GP, the Primary Health Care Team, practice employed staff and school nurses***

3.35 The GP and all members of the Primary Health Care Team (PHCT), particularly midwives, health visitors, practice nurses and school nurses, are well placed to recognise the early signs and symptoms of fabricated or induced illness in a child, through their monitoring of pregnancies and child health promotion. PHCTs may include psychologists or counsellors. Such professionals may infrequently be involved in consultations with patients that reveal the possibility of fabricated or induced illness by the individual who is being counselled or supported.

3.36 Professionals in PHCTs may have unique knowledge of uncorroborated, odd or unusual presentations. Also, of those children who frequently attend the clinic, where there is a discrepancy between the child's reported signs and symptoms

and those observed, and where there is a history of abnormal illness behaviours in the family.

- 3.37 Such cases can pose conflict of loyalty for primary care staff for whom the child and the parents may both be patients. Such professionals have a duty to safeguard and promote the welfare of the child. For further information, see the statement issued by the Welsh Assembly Government on 31 July on the *Duties of Doctors and Other Health Professionals in Investigations of Child Abuse*.
- 3.38 Where primary care staff, including GPs, have concerns regarding possible fabricated or induced illness, they should ensure the child is referred to a paediatrician for a paediatric assessment. This should not delay referral to children's social services when appropriate (see Chapter 4 for more information). Named or designated professionals will be an invaluable source of help and advice.
- 3.39 GPs and PHCT members should consider issues of confidentiality carefully and in the context of the individual case with which they are dealing. They should be aware of the Assembly's information sharing guidance, *Information Sharing: a practitioner's guide* that issued in 2007. Where they have concerns that an illness is being fabricated or induced in a child, they should follow the child protection processes as set out in Chapter 4 of this document.

#### ***NHS Direct, walk-in centres***

- 3.40 Children who are having illness fabricated or induced may present to NHS Direct, a walk-in centre or the PHCT with concerns that may be related to fabricated or induced illness. Presentations may be related to common problems, for example repeated nosebleeds, or un-witnessed seizure like episodes, or reports or claims that are unusual and not possible to test for, such as particular allergies or concerns about emitting odd smells. It is not unusual for the carers of this group of children to be either seeking repeated attention or avoiding contact with all statutory agencies. Carers may convince the child that he or she has an illness that results in them having little or no social and educational experiences. Although not life threatening, these situations can be some of the most debilitating for children's health and development.

#### ***Child and Adolescent Mental Health Services (CAMHS)***

- 3.41 The roles of CAMHS professionals may include recognition of situations where emotional (psychological or psychiatric) and behavioural symptoms are being fabricated or induced. In the course of their work, CAMHS professionals may identify or come to suspect that fabricated or induced illnesses are being presented to them in the form of fabricated or induced emotional or behavioural symptoms. Fabricated or induced illness in mental health settings is particularly difficult to identify for a variety of reasons. Not least because in some psychiatric conditions the symptoms that signify a mental health disorder in children (which is not fabricated or induced) are observed to vary in the degree to which they present in different settings.

- 3.42 Specialist CAMHS professionals will also receive requests for advice from other professionals who are working with families where fabricated or induced illness is considered a possibility. This will usually be where fabricated or induced illness, or repeated presentation with different unexplained or unsubstantiated symptoms is thought to be taking place, or where the parent is seeking inappropriately invasive medical care for a proven physical illness. It may also be in the early stages of evaluating the possibility of more serious illness induction. The service will need to respond promptly in these circumstances. Help may be required to provide an opportunity for the other professionals to clarify their own thinking, and consider possible reasons for parental behaviours and anxieties, consider ways to explain and engage parents with professional concerns, and provision of psychiatric expertise in considering the child's welfare and responses. CAMHS professionals may also help other professionals who are assisting parents with difficulties in their parenting roles or management of chronic illness, where these are part of the overall situation. There may be an opportunity for some families to receive direct interventions from the specialist CAMHS service. Careful notes of these conversations and of the conclusions drawn must be kept, including key decisions such as to call a strategy meeting or initiate s47 enquiries.
- 3.43 A third role for specialist CAMHS professionals is in the course of an assessment of the child and family where fabricated or induced illness is an issue. The service will receive requests from various sources, during the course of an overall assessment. The service should contribute with other professionals to the provision of an assessment as laid out in the *Assessment Framework*. Paragraphs 2.1 – 2.25 of the *Assessment Framework* describes the particular areas to be addressed during an assessment. The most important areas will be an assessment of the child's psychological functioning, in particular the child's beliefs and possible anxieties, about their state of health, ways to support and to improve this family's functioning and an assessment of the parents' capacity to meet the child's needs.
- 3.44 CAMHS professionals may also contribute to an assessment of the mental health functioning of a parent. In addition to an assessment of family history, family functioning and parenting capacity, this may include an initial view of the mental state a parent displays during the course of the assessment, and the level of engagement he/she has achieved with the service. Here it will be important to liaise with colleagues in adult mental health services and, where appropriate, undertake a joint assessment (see Falkov et al, 1998 for further discussion on joint working between adult and child and family psychiatrists).
- 3.45 CAMHS specialists will receive requests from various sources for treatment for families in which abuse of this kind is an issue, or where a child is in need but concerns about significant harm have not been substantiated. CAMHS may need to offer assistance with parenting skills, or work on relationships between family members. Individual work with children may also be appropriate. In particular, CAMHS may be able to help others recognise how the young person and their family respond to stress, and that this may be by expressing concerns about physical or mental health disorders.
- 3.46 In circumstances where the child has suffered significant harm, CAMHS specialists may need to offer a range of interventions and services as part of the child's overall plan. This may include intensive work on family relationships

and attachments, and individual work with both parents and children. There may be a need to call on specialist resources beyond the capacity of many local areas. Wherever possible, CAMHS professionals should be able to use existing resources to initiate or continue treatment of children and families, in close liaison with other professionals and services.

### **Adult mental health services**

- 3.47 The full range of adult mental health professionals, including nurses, social workers, occupational therapists, clinical psychologists and psychiatrists, may need to be involved in an assessment and the treatment of a carer of a potentially abused child. This involvement may pre-date or follow the raising of concerns in relation to fabricated or induced illness in a child during the course of s47 enquiries and subsequent actions, or following identification of the carer's involvement in the abuse, or likely abuse, of a child.
- 3.48 Through their involvement with an adult patient, mental health professionals may become concerned about the welfare of a child. In particular, this may be if a carer is known to fabricate or induce illness in themselves or, perhaps rarely, to have a somatising disorder. If adult mental health professionals have concerns about a child, they should discuss these concerns with a named doctor or nurse in their NHS Trusts, the designated doctor or nurse, or with their local children's social services.

### **Specialist assessments**

- 3.49 A specialist adult psychiatric assessment may be sought when there is a moderate to high level of suspicion that a carer has been inducing symptoms, or a court has made a finding of fact that such behaviour has occurred. To inform core assessments or child protection conferences, it will be important to get an assessment from a psychiatrist who is familiar with the relevant developmental and family psychiatric literature, and the risk and mental disorder literature, especially in relation to personality disorder, since this is the diagnosis most often made in these situations. Additionally, information should be sought from mental health clinicians involved in any ongoing treatment of the carer. It is, however, important to note that the presence of an adult mental disorder cannot be taken as evidence of fabrication or induction of illness in the child; the latter requires a paediatric evaluation.
- 3.50 Forensic or adult psychiatrists with expertise in the area should be sought to perform a specialist assessment of the presence, degree or severity of any mental illness or disorder that the carer may have, including personality disorder. The specialist assessment should draw on the risk and mental disorder literature when asked to give an opinion about risk of significant harm to a child or children who have had illness fabricated or induced.
- 3.51 The specialist assessment would be expected to include a full family medical history, with a developmental history of the carer, and a full obstetric history (see paragraph 6.21 on health professionals sharing information with each other). Access to GP notes and/or the obstetric notes will be helpful. GP notes will give some indication about how parents have interacted with health care professionals prior to concerns being raised about them having fabricated or

- induced illness in their child. It may be helpful to obtain formal personality assessments from a forensic psychiatric team or from a clinical psychologist.
- 3.52 A detailed case history should be summarised by the specialist assessor. Any psychiatric disorder (including personality disorder) should also be carefully described in terms of its presentation, severity and treatment. To be safe and of value in future decisions about the child's welfare, a report should attempt to set out not only the nature of any disorder, but also suggestions about how best the adult carer's mental health might be managed.
- 3.53 Consideration should be given to external stressors in the carer's life. Some of the child abuse literature suggests that abuse of a child may be triggered by some other external stressors, especially violence within the home. Assessing psychiatrists should routinely ask about domestic violence. A significant proportion of women has experienced victimisation as adults such as domestic violence or rape. It may also be important (particularly in the context of abnormal illness behaviour) to enquire about the health of family members and/or recent bereavements.
- 3.54 Details of forensic history should be sought. This will not necessarily be easy with an adult who already feels under suspicion, but has not been charged with any criminal offence. Parents who are being assessed in the context of family court proceedings are likely to be defensive and hostile, and this should not *prima facie* be taken as an indication of a personality disorder or guilt.
- 3.55 A psychiatric in-patient assessment may be considered if the carer's mental disorder is so severe as to preclude a community-based assessment. Those familiar with work with offenders report that people are often very defensive and in denial at the start of an investigative process, but over a period of time may be more able to acknowledge what they have done. Given that complete denial of any offending behaviour and a projection of responsibility onto others is a poor prognostic sign in terms of treatment outcome, it is very important to assess the issue of denial carefully and thoughtfully. Non-compliance with treatment may need to be a point of starting the intervention, rather than a reason for abandoning it. There may be a conflict between the adult's time-scales for change and the child's need for permanency. This may mean that decisions have to be made to place the child in an alternative family context before the adult's treatment has been successfully completed.
- 3.56 Assessing psychiatrists should be able to liaise with those assessing the child and those who have knowledge of the child's health. It will be helpful for the assessing psychiatrist to have access to the paediatric notes, as well as the child's GP notes.
- 3.57 As in all forensic cases, it is helpful to separate out those clinicians who undertake assessments for legal proceedings, and those who offer treatment. It is helpful for an assessing psychiatrist to liaise with the treating psychiatrist during the process of completing an assessment, as the parent's response to treatment may be an important indicator of future risk of harm to the child if in the care of the parent.

- 3.58 If the assessing psychiatrist is being asked to comment about treatment, then this question should distinguish between treatment for the carer's psychological needs and treatment for risk improvement. These aims are not necessarily the same.
- 3.59 It will be helpful if the psychiatrist can take a potential risk of harm explicitly into account in making recommendations. It is acknowledged, however, that there is currently an insufficient forensic evidence base to support the professional in making categorical statements or judgements about risk of harm to the child(ren).
- 3.60 A focus of treatment that emphasises risk reduction would be consistent with other treatment innovations in forensic psychiatry and psychology, and has the advantage of transparency. However, the fact that a parent will not be reunited with their child(ren) should not be reason for not offering treatment for risk of harm. This is particularly so if the mother is of child bearing age.

### **Local authorities**

- 3.61 Safeguarding and promoting the welfare of children is the responsibility of the local authority, working in partnership with other public organisations, the voluntary and independent sectors, children and young people, parents and carers, and the wider community. A key objective for the local authorities is to ensure that children are protected from harm. All local authority services have an impact on the lives of children and families. This guidance recognises that those working in housing, sport, leisure and environmental health are less likely to be involved in cases of fabricated or induced illness. However, if they are involved with a child where it is suspected or known the illness is being fabricated or induced, they should follow the guidance in *Safeguarding Children* (see paragraphs 2.59 – 2.86), which sets out roles and responsibilities more fully.
- 3.62 Local authorities have a duty to plan services for children in need, in consultation with a wide range of other agencies, and to publish the resulting children's services plans. The local authority is required to establish a Local Safeguarding Children Board (LSCB) - the key statutory mechanism for agreeing how the relevant organisations in each local area will co-operate to safeguard and promote the welfare of children in that locality, and for ensuring the effectiveness of what they do (paragraph 4.1 of *Safeguarding Children*).
- 3.63 Many authorities have management structures that cut across traditional departments and service boundaries, and which bring together a range of children's services. Where this guidance refers to children's social services, this indicates that part of the local authority that carries out children's social services functions.

### **Local authority children's social services**

- 3.64 Under the Children Act 1989, local authority children's social services have lead responsibility for the protection of children from harm. A key duty for the local authority is to both safeguard and promote the welfare of children. This duty has four elements:

- protecting children from maltreatment;
  - preventing the impairment of children's health or development;
  - ensuring that children are growing up in circumstances consistent with the provision of safe and effective care; and
  - undertaking that role so as to enable those children to have optimum life chances and to enter adulthood successfully (paragraph Chapter 2 of *Safeguarding Children*).
- 3.65 This section, which sets the roles and responsibilities of children's social services, should be read in conjunction with Chapter 2 of *Safeguarding Children* and paragraphs 5.9 – 5.15 of the *Assessment Framework*. In this supplementary guidance, the focus is on the specific responsibilities of children's social services in the management of cases where children are suffering, or likely to suffer, significant harm as a result of illness that has been fabricated or induced by a carer. These responsibilities fall into four main areas: assessment, including s47 enquiries; planning; provision of services; and reviewing children's progress.

## **Assessment**

- 3.66 Children's social services have lead responsibility for undertaking an initial assessment of a child in need. This will include circumstances in which fabricated or induced illness by a carer is suspected. Children's social services will conduct the initial assessment in conjunction with the doctor who has lead responsibility for the child's health care (usually a consultant paediatrician) and other relevant agencies.
- 3.67 Children's social services also have lead responsibility for any core assessment and will co-ordinate the process of systematic information gathering to build up a medical, psychiatric and social history, an understanding of the child's needs and the parents' capacity to meet those needs. Children's social services should ensure that a comprehensive chronology of the child's history is compiled.
- 3.68 Children's social services should work collaboratively with all other agencies currently involved with the child and family. In addition, it is likely to be necessary to contact agencies with past involvement in order to prepare a full history of the child's health and family situation.
- 3.69 There must be clarity about roles and responsibilities during the assessment process and about what information can be shared with parents, including issues of timing, as well as between agencies.
- 3.70 Children's social services also have a duty, under s47 of the Children Act 1989, to make enquiries if they have reasonable cause to suspect that a child in their area is suffering, or likely to suffer, significant harm. This includes cases where the harm may be as a result of fabricated or induced illness. These enquiries enable children's social services to decide whether to take any action to safeguard and promote the child's welfare. A core assessment is commenced at the point at which s47 enquiries are initiated in a strategy discussion. The police decide whether to instigate a criminal investigation, having considered



the views of other agencies (paragraphs 2.174 – 2.198 of *Safeguarding Children*).

- 3.71 Children's social services are responsible for convening strategy discussions and, when appropriate, initial and review child protection conferences, in order to review the child's situation and to decide and plan any further action that may be necessary. Any agency may request a strategy meeting or child protection conference, if it has concerns that a child may be, or is suffering, significant harm.

## **Planning**

- 3.72 An outcome of s47 enquiries may be that the concerns are substantiated, but the child is not judged to be at continuing risk of harm. A child in need plan may be developed at the conclusion of the core assessment, which will involve the child and family members as appropriate and the contributions of all agencies (paragraph 4.33, *Assessment Framework*). The plan will set out what services are to be provided by which agency, the objectives to be met if the child is to achieve optimal developmental progress, and which agency has lead responsibility for reviewing the plan at regular intervals (Figure 7, *Assessment Framework*).
- 3.73 If a child protection conference is held, children's social services must ensure that staff are sufficiently senior to be able to commit the department to following through on recommendations regarding action to be taken immediately after the conference. This is particularly relevant for recommendations regarding the seeking of emergency protection or interim care orders; where the child should live; and the nature and frequency of contact with parents or other carers.
- 3.74 Children's social services are responsible for co-ordinating a multi-agency child protection plan to promote and safeguard the child's welfare. They will also act as the principal point of contact for other agencies that may want to report new or further concerns about the child.
- 3.75 Where the child's welfare cannot be safeguarded if he or she remains at home, children's social services may apply to the courts for a care order, or, if the child is in immediate danger, for an emergency protection order. This should involve the local authority's solicitor who has responsibility for co-ordinating the legal proceedings. Children's social services should co-ordinate, in conjunction with the responsible paediatric consultant where appropriate, further medical investigations, expert opinions, assessments and intervention, and arrange placements and contact between the child and parents. Where necessary, contact should be supervised.

## **Provision of services**

- 3.76 Children's social services have a duty to safeguard and promote the welfare of children in need in their area, through the provision of services appropriate to the needs of such children and, as far as is consistent with this, to promote the upbringing of children within their families (s17 of the Children Act 1989). They should do this by working with parents and in a way that is sensitive to the child's race, religion, culture and language. Children's social services are

responsible for providing direct services as appropriate and co-ordinating all services that are set out in the child's plan.

## **Reviewing**

3.77 Children's social services have lead responsibility for reviewing any child protection or care plan and, if agreed by the parties, a child in need plan (paragraphs 4.32 – 4.37 of the *Assessment Framework*).

## **Local authority solicitors**

3.78 If legal action is planned, proceedings will be co-ordinated by the local authority solicitor, who is also able to provide advice to local authority staff on legal matters relating to the child's welfare and the nature and quality of any evidence of the child suffering, or likely to suffer, significant harm, as well as advice on matters such as consent, confidentiality and disclosure of information.

## **Sure Start children's centres, schools and further education institutions**

3.79 Paragraphs 2.65 – 2.76 of *Safeguarding Children* set out the role of schools and further education institutions. Welsh Assembly guidance on *Safeguarding Children in Education: the role of local authorities and governing bodies under the Education Act 2002* is due to be published soon.

3.80 Guidance on safeguarding children procedures provides advice to the education service on what they should do if they have reason to believe a pupil is being harmed or is at risk of harm. Through their day-to-day contact with children, teachers and other school staff are particularly well placed to notice outward signs of harm. For pre-school children, Sure Start children's centres will have a key role to play in the identification and management of suspected cases of fabricated or induced illness. This may occur when parents give a description of the child's ill health that does not accord with the observations of children's centre staff. Although this discrepancy can do no more than raise concerns about possible significant harm, teachers, children's centre staff and all other staff should be alert to this possibility. They should know how to seek further information and to whom they should address their child welfare concerns.

3.81 Sure Start children's centre managers, in conjunction with the local authority, should ensure their centre has a clear safeguarding children policy, and that all staff can demonstrate an understanding of child protection and how this relates to their role. In practice, this means managers should:

- use a lead person whose job it is to ensure every member of staff is competent in their knowledge of child protection and knows what to do if they are worried that a child is being harmed, and what the procedure is for reporting and recording child protection concerns;
- ensure parents are aware that staff have a duty to share child protection concerns with other professionals and agencies; and
- be ready to support children, their families and staff if a referral to children's social care or s47 enquiries were to occur.

- 3.82 It is important that schools do not undertake their own enquiries if they have reason to suspect possible or actual harm. They should not take action beyond that which has been agreed in the safeguarding children procedures set down by their LSCB. Enquiries into concerns about a child's welfare are the responsibility of the appropriate local agencies such as children's social services or the police. They have the necessary professional expertise to take such enquiries forward.
- 3.83 Schools have an important role to play in the identification and management of suspected cases of fabricated or induced illness, and further guidance is set out below. Where there are concerns about a child being given medicines inappropriately, please refer to the government's guidance on managing medicines (Department of Education and Skills and Department of Health, 2005). As with all other forms of suspected harm, teachers, children's centre staff and all other staff should refer any child welfare concerns they have to the senior member of staff with designated responsibility for child protection issues. He or she should act as a source of advice and support, and is responsible for co-ordinating action within the institution and liaising with other agencies. The designated teacher can, in turn, seek advice from their LEA senior officer with responsibility for co-ordinating action and policy on child protection. This person is also usually the LEA's representative on the LSCB.
- 3.84 Absences from school are common and occur for many reasons, including legitimate medical and hospital appointments. If fabricated or induced illness by a carer is suspected, schools should verify the reasons for the child's absences. They should also determine whether reported illness is being used by the child, for example to avoid unpopular lessons or being bullied. It is not within the scope of this document to offer guidance in these circumstances. Such concerns should not be dismissed. On the contrary, they are very real and have an impact on pupils' behaviour and academic performance. Schools should have in place their own procedures for dealing with such situations (guidance on these issues is available in the National Assembly for Wales circular 47/06: *Inclusion and Pupil Support*). When an illness is genuine, the school's sickness procedures will apply.

### **Identification of fabricated or induced illness**

- 3.85 Fabricated or induced illness is often, but not exclusively, associated with emotional abuse. There are a number of factors that teachers and other school staff should be aware of that can indicate that a pupil may be at risk of harm. Some of these factors can be:
- frequent and unexplained absences from school, particularly from PE lessons;
  - regular absences to keep a doctor's or hospital appointment; or
  - repeated claims by parent(s) that a child is frequently unwell and that he/she requires medical attention for symptoms which, when described, are vague in nature, difficult to diagnose and which teachers/early years staff have not themselves noticed, eg headaches, tummy aches, dizzy spells, frequent contact with opticians and/or dentists or referrals for second opinions.

- 3.86 The child may disclose some form of ill treatment to a member of staff or might complain about multiple visits to the doctor. Either the child or his or her parent(s) may relate conflicting or patently untrue stories about illnesses, accidents or deaths in the family. Where there is a sibling in the same institution, teachers/early years staff should discuss their concerns with each other to see if children of different ages in the same family are presenting similar concerns. If they are, it is likely that more than one child in the family is affected. The school nurse may also be able to contribute to the initial evaluation of concerns.
- 3.87 There are also circumstances under which a child will demonstrate his or her anxiety or insecurity by presenting symptoms of an illness that will allow them to stay at home. This may occur as a response to family problems, for example as a reaction to a parent who is ill, who has been in hospital or after a divorce or separation, but this is not an aspect of fabricated or induced illness.

### **Management of fabricated or induced illness**

- 3.88 Where a teacher or other member of staff has reasonable cause to believe a child is at risk from, or is the subject of, fabricated or induced illness, the institution's safeguarding children procedures apply. This will require the member of staff to refer his or her concerns to the senior member of staff with designated lead for child protection, who is then responsible for making a referral to children's social services.
- 3.89 Schools and early years staff should, in particular, be alert to any significant change in the child's physical or emotional state, in his or her behaviour or failure to develop, and draw these to the attention of the designated senior member of staff.
- 3.90 It is helpful if, prior to approaching the designated senior staff member, the member of staff concerned can present a diary of events, including a record of absences and the reasons for absence given by the parent (where known). He or she should also listen carefully to what the child relates and should record any discussions with the child, including quotes of what the child said. The time, date, place and names of any people who were also present at the time should also be recorded.
- 3.91 As stated above, neither schools, early years setting nor members of staff should carry out their own enquiries. After the designated senior staff member has referred a concern, it is for those agencies with a professional interest, ie children's social services or the police, to take matters forward in line with LSCB safeguarding children procedures. The designated senior member of staff is normally invited to attend any strategy discussions or child protection conferences. The conference should notify the designated senior member of staff of the extent to which the child's parents have been notified of concern for the child and what information can be shared. All parties should follow the decisions made at the strategy discussions and conferences, in particular in relation to what information may be shared.
- 3.92 If, during the course of an inspection, inspectors become concerned about the possibility that a child may be having illness fabricated or induced, they should follow the child protection procedures of Estyn.

## Police

- 3.93 This section should be read in conjunction with paragraphs 2.174 – 2.198 of *Safeguarding Children*, which set out the principles applying to the police role in child protection investigations.
- 3.94 Any suspected case of fabricated or induced illness may also involve the commission of a crime, and the police should therefore always be involved in accordance with Chapter 2 of *Safeguarding Children*. Events such as intentional smothering or poisoning are clearly criminal assaults, but more subtle forms of child abuse, such as wilfully interfering with feeding lines or causing unnecessary medical interventions to be undertaken, may also be criminal acts.
- 3.95 The police should be alerted to suspected cases of fabricated and especially induced illness as early as possible. It may be crucial for any ongoing criminal investigation that the carer is not made aware of the child protection concerns. There are many low-key enquiries that can be made by the police before any proactive investigation is launched. At this stage, ie before suspicions are confirmed, the consultant responsible for the child's health (usually a paediatrician) should retain the lead role for the child's health. The priority for police officers should be to assist the paediatrician, where relevant and appropriate, in reaching an understanding of the child's health status. The balance may change when it becomes clear whether or not a crime appears to have been committed. In such circumstances, the police will need to ensure the rights of the suspect are upheld and that evidence is gathered in a fair and appropriate way.
- 3.96 The police service is the prime agency for gathering evidence in connection with criminal cases. There is sometimes reluctance on the part of doctors to involve the police, but it must be remembered that all professionals should be working towards the same goal, ie securing the safety of the child. It may well be that enquiries made by the police assist in identifying that the underlying explanation for the child's symptoms is not related to harm caused by a carer. In any case, the police should work within the multi-agency framework, and all relevant information should be shared with those professionals treating the child. Any evidence of child abuse gathered by the police will normally be available for use by the local authority in any care proceedings.
- 3.97 The police use technical means to gather evidence in many types of criminal enquiry, and it may be appropriate to use such methods, for example covert video surveillance, in cases of suspected fabricated or induced illness. In a case where this is indicated as appropriate by the multi-agency strategy discussion, the police will supply any equipment required and be responsible for monitoring and managing the process. The police, like other public authorities, are bound by the Human Rights Act 1998 and the Regulation of Investigatory Powers Act 2000, and any operations within this context will therefore be carefully controlled, and police managers will be fully accountable. Doctors or other professionals should not carry out covert video surveillance independently. If the suspicion of child abuse is high enough to consider the use of such a technique, the threshold must have been passed to involve the police and children's social care services. The National Crime Faculty provides confidential good practice advice for police officers.

- 3.98 The police should carry out any work within a hospital sensitively and delicately, with any disruption to normal ward life being kept to a minimum. Any arrest or interview in a hospital setting should be carried out as sensitively as possible, ideally using plain-clothes officers, to avoid disruption to patients and staff. The inter-agency management team should, if possible, consider the arrest strategy well in advance of it being carried out.
- 3.99 Irrespective of what evidence is likely to be used in the civil court, the criminal court, or both, it must be gathered to the highest standards. When the police are involved in a situation where fabricated or induced illness is suspected, even greater care should be taken to ensure that the investigation is thorough and professional, and led by an experienced senior investigating officer.

### **Probation services**

- 3.100 The range of roles and responsibilities of the probation service in relation to safeguarding children is set out in paragraphs 2.214 – 2.236 of *Safeguarding Children*. Probation services have a statutory duty to supervise offenders effectively in order to reduce re-offending and protect the public. In the execution of that duty, probation officers will be in contact with, or supervising, a number of men (and, to a lesser extent, women) who have convictions for offences against children. a very small number may have been convicted for offences relating to the fabrication or induction of illness in a child. However, it is more likely that probation officers may become aware of past events that cause them to suspect that the person they are supervising has been involved in the fabrication or induction of illness in a child. for example, they may become aware that a child dies in suspicious circumstances and suspect the child had been intentionally smothered rather than dying from natural causes.
- 3.101 Where probation officers, in the normal course of their work in the community, become concerned about the safety of a child or children, they should work closely with the police, children's social services and other relevant organisations to assess the risk of harm posed to children by known and suspected offenders.

### **Voluntary and independent sectors**

- 3.102 Voluntary organisations and independent sector providers play an important role in delivering services to children in need. They provide a wide range of supportive services and may be involved in providing these after fabricated or induced illness has been identified.
- 3.103 The range of roles fulfilled by these organisations means that they should have clear guidance and procedures in place to ensure that, when they are concerned a child may be suffering significant harm, appropriate referrals are made in accordance with LSCB safeguarding children procedures. Staff and volunteers should be trained so that they are aware of the indicators of possible harm in the children with whom they are working. This general responsibility also applies in instances where a concern arises that a child may be subject to maltreatment due to fabricated or induced illness.

## **Children and Family Court Advisory and Support Service (CAFCASS) Cymru**

- 3.104 The roles of CAFCASS Cymru guardians and reporting officers are set out in paragraphs 3.4 – 3.9 of *Safeguarding Children*. Within CAFCASS Cymru, officers of the service undertake a range of functions, including involvement in care and related proceedings under the Children Act 1989, and proceedings under adoption legislation. Their duties are to safeguard and promote the welfare of children who are the subject of proceedings by providing advice to the court as an independent professional, not as an officer of the court. In care-related applications, where the child is a party to the proceedings, the officer appoints a solicitor to represent the child and is responsible for instructing the solicitor.
- 3.105 In private law proceedings, the officer of the services is referred to in court rules as the ‘children’s guardian’. The role is limited to the duration of the court proceedings, including any appeal that might be lodged. In each case, the children’s guardian should exercise discretion over how best to undertake enquires, assess information, consult a range of professionals and report to the court at interim hearings, directions appointments and at the final hearing.
- 3.106 Officers of the service have a statutory right to access and take copies of local authority records relating to the child concerned and any application under the Children Act 1989. That power also extends to other records that relate to the child and the wider functions of the local authority, or records held by an authorised body, ie the NSPCC, that relate to the child.
- 3.107 CAFCASS Cymru officers of the service who are appointed by the court as a children’s guardian should always be invited to formal planning meetings convened by the local authority in respect of the child. This includes statutory reviews of children who are looked after by the local authority, child protection conferences and relevant adoption panel meetings. The conference chair should ensure that all those attending such meetings, including the child and any family members, understand the role of the CAFCASS Cymru officer.

### **Family justice courts**

- 3.108 In the event that proceedings are issued for a care or supervision order under the Children Act 1989 (see paragraph 3.75), all professionals involved should adopt an inter-disciplinary approach to their work. An awareness of the tasks and responsibilities of other professionals increases the possibility of consensus on issues, if not on outcome. These considerations are of particular importance in those cases where difficult issues of fact or opinion have been referred to more than one expert.
- 3.109 If good practice issues or difficulties seem to recur in any locality, they may be referred to the designated judge of the relevant care centre or to the business committee that the judge chairs.

### **The armed services**

- 3.110 Local authorities have the statutory responsibility for the safeguarding and promoting the welfare of the children of service families in the UK.

3.111 When service families (or civilians working with the armed forces) are based overseas, the responsibility for safeguarding and promoting the welfare of children is vested with the Ministry of Defence who fund the British Forces Social Work Service (Overseas). This service is contracted to the Soldiers', Sailors' and Airmen's Families Association Forces Help (SSAFA-FH), who provide a fully qualified social work and community health service in major overseas locations (for example Germany and Cyprus). For further discussion on service families based overseas, see paragraphs 3.42 – 3.48 of *Safeguarding Children*.

### **Children of foreign nationals**

3.112 Where safeguarding concerns regarding fabricated or induced illness are raised about children who are foreign nationals, the procedures set out in this guidance apply.



## 4 MANAGING INDIVIDUAL CASES

### Introduction

- 4.1 All parents demonstrate a range of behaviours in response to their children being ill or being perceived as ill. Some may become more stressed or anxious than others. Their responses may in part relate to their perceptions of illness and to their expectations of the medical profession. Health professionals are taught to listen to the concerns of parents about their children's health and to act on these. Part of their role is not only to treat the sick child but also, in collaboration with other professionals, to assist parents to respond appropriately to the state of their children's health.
- 4.2 Some children may not be unwell, but their parents need reassurance that they are indeed well, whilst others may experience continuing difficulty in recognising that their child is healthy and exhibiting normal childhood behaviours (for further discussion see Eminson, 2000a and 2000b; Eminson & Postlethwaite, 1992). Some parents can be helped to interpret and respond appropriately to their child's actions and behaviours, whilst others may continue to be anxious and/or unable to change their beliefs. It is this latter group of parents who are more likely to present their children for medical examination, although the children are healthy. Skilled professional intervention is likely to enable most parents to learn how to interpret their child's state of health and manage their own anxieties. There may be some parents for whom such early interventions are ineffective. These parents may have particular needs that result in them persistently presenting their child(ren) as ill and seeking investigations and medical treatments. They may benefit from a multi-agency approach to intervention. For those children who may be children in need under the Children Act 1989, the referral and initial assessment processes set out in paragraphs 4.14 – 4.22 should be followed.
- 4.3 For a small number of children, concerns will be raised when it is considered that the health or development of a child is likely to be significantly impaired, or further impaired, by the actions of a carer or carers fabricating or inducing illness. Where the impairment is such that there are concerns the child is suffering, or is likely to suffer, significant harm, the guidance set out in this chapter should be followed.

### Concerns about possible fabricated or induced illness

- 4.4 This chapter should be read in conjunction with Chapter 8 and paragraphs 9.63 – 9.66 of *Safeguarding Children*. In this supplementary guidance, the focus is on specific issues that relate to situations where there are concerns that a child is suffering, or is likely to suffer, significant harm as a result of having illness fabricated or induced by their carer. These concerns may be raised by a number of different types of professionals or, more rarely, by family members or members of the public.
- 4.5 Concerns may arise about possible fabricated or induced illness when:
- reported symptoms and signs found on examination are not explained by any medical condition from which the child may be suffering;

- physical examination and results of medical investigations do not explain reported symptoms and signs;
  - there is an inexplicably poor response to prescribed medication and other treatment;
  - new symptoms are reported on resolution of previous ones;
  - reported symptoms and found signs are not seen to begin in the absence of the carer;
  - over time the child is repeatedly presented with a range of signs and symptoms;
  - the child's normal, daily life activities are being curtailed, for example school attendance, beyond that which might be expected for any medical disorder from which the child is known to suffer.
- 4.6 There may be a number of explanations for these circumstances and each requires careful consideration and review. A full developmental history and an appropriate developmental assessment should be carried out. Consultation with peers, named or designated professionals or colleagues in other agencies will be an important part of the process of making sense of the underlying reason for these signs and symptoms. The characteristics of fabricated or induced illness are a lack of the usual corroboration of findings with symptoms or signs or, in circumstances of proven organic illness, lack of the usual repose to proven effective treatments. It is this puzzling discrepancy that alerts in particular the clinician to possible harm being suffered by the child.
- 4.7 Concerns may be raised by professionals other than medical clinicians, such as nurses, teachers or social workers who are working with the child. For example, in a school or nursery setting the staff may not observe any fits in a child who is described by the parent to be having frequent fits during the day whilst in their care. In addition, professionals working with the child's parents may be being given information by the parent about the child or observe the child directly and note discrepancies between what they are told about the child's health and development and what they see themselves. For example, mental health professionals may identify a child being drawn into the parent's illness behaviour by having signs and symptoms described by the parent that replicate their own medical/psychiatric problems.
- 4.8 Health professionals who have concerns about a child's health should discuss these with the child's GP or, if the child is known to the hospital service, the consultant paediatrician responsible for the child's health care (see Chapter 3). If any professional feels that their concerns about fabricated or induced illness are not being taken seriously or responded to appropriately, they should discuss these with their local named or designated doctor or nurse.

### **Medical evaluation**

- 4.9 Signs and symptoms of illness present in a child may suggest fabricated or induced illness. The reasons for these signs and symptoms may be difficult to understand for a variety of reasons and professionals should remain open to all possible explanations.
- 4.10 Where there are concerns about possible fabricated or induced illness, the signs and symptoms require careful medical evaluation by a paediatrician. For

children who are not already under the care of a paediatrician, the child's GP should make a referral to a paediatrician, preferably one with expertise in the specialism that seems most appropriate to the reported signs and symptoms. Tests and results should be fully and accurately recorded, including those with negative results. It is important to ensure these records are not tampered with, also that the name of the person reporting any observations about the child is recorded clearly in the child's notes and dated.

- 4.11 If a reason cannot be found for the reported or observed signs and symptoms of illness, further specialist advice and tests may be required. Normally, the consultant responsible for the child's care will tell the parent(s) that they do not have an explanation for the signs and symptoms; the parental response to this information should be recorded. The consultant would then set out the next steps, including what further assessments/investigations/tests (perhaps in a more specialised setting) are required to tease out the possible explanations. Parents should be kept informed of findings from these medical investigations, but at no time should concerns about reasons for the child's signs and symptoms be shared with the parents, if this information would jeopardise the child's safety. The child should continue to receive appropriate health care and health professionals should continue to provide support to the child's carers.
- 4.12 Ensuring a medical evaluation takes into account what children are saying is always important. In the case of suspected fabricated or induced illness it is equally important, but can be complicated by some parents' reluctance to leave the child. This reluctance to allow their child to be spoken to by a clinician has to be balanced against the need to see the child on their own in order to ensure the child's welfare. Every effort should be made to see the child without the parent being present; some children may be competent to make this decision on their own.
- 4.13 There may be times when a member of staff is responsible for the unexplained or inexplicable signs and symptoms in a child; this should be borne in mind when considering how to manage the child's care. Any such concerns about a member of staff should be discussed with the relevant named or designated professionals in accordance with the LSCB safeguarding children procedures (see Chapter 12 of *Safeguarding Children*).

## **Referral**

- 4.14 Local authority children's social services have particular responsibilities for children whose health or development may be impaired without provision of services, or children who are disabled (defined in the Children Act 1989 as 'children in need'). When a parent, professional or another person contacts children's social services with concerns about a child's welfare, it is the responsibility of children's social services to clarify with the referrer (including self-referrals from children and families):
- the nature of the concerns;
  - how and why they have arisen; and
  - what appear to be the needs of the child and family.

- 4.15 In response to the referral, children's social services should decide on the next steps of action. This initial consideration should address whether there are concerns about the child's health and development or actual and/or potential harm. Any such concerns would justify an initial assessment to establish whether the child is a child in need, the nature of any services required, and whether a more detailed core assessment should be undertaken. The flow charts at the end of this chapter illustrate the processes for safeguarding and promoting the welfare of children).
- 4.16 These same processes, which are set out in *Safeguarding Children*, should be followed when a possible explanation for the signs and symptoms of illness is that they may have been fabricated or induced by a carer. Referral to children's social services may follow an evaluation of the child's signs and symptoms whilst they are in hospital. It may be as a result of concerns held by professionals working with the child; or it may be as a result of concerns held by a member of the public who knows the child. Whilst, in general, professionals should seek agreement to making a referral to children's social services, this should only be done where such discussions and agreement seeking will not place a child at increased risk of significant harm (see paragraphs 8.27 -8.30 of *Safeguarding Children*). Decisions should be agreed between the referrer and the recipient of the referral, in line with LSCB safeguarding children procedures, about what the parents will be told, by whom and when.
- 4.17 Children's social services should decide and record, within one working day, what response is necessary. From the point of referral, all professionals involved with the child and children's social services should work together. Lead responsibility for action to safeguard and promote the child's welfare lies with social services. Any suspected case of fabricated or induced illness may involve the commission of a crime; the police should therefore always be involved in accordance of Chapter 2 of *Safeguarding Children*. It is expected that the paediatric consultant responsible for the child's health care is the lead health professional and therefore has lead responsibility for all decisions pertaining to the child's health care. If a child is known to a GP but not to a paediatrician, it is important that a GP referral is made to a paediatrician and he or she assumes lead responsibility for the child's health (see paragraph 4.10). In order to safeguard and promote the child's welfare, it is important that all three disciplines, ie health, children's social services and the police, work closely together in making and taking forward decisions about future action, recognising each other's roles and responsibilities. All decisions about what information should be shared with the parents, when and by whom, should be jointly taken in line with LSCB safeguarding children procedures. In all cases where the police are involved, the decision about when to inform the parents about referrals from third parties will have a bearing on the conduct of police investigations (see paragraphs 8.32 and 8.33 of *Safeguarding Children*).
- 4.18 Referrals under s17 of the Children Act 1989 may lead to no further action, or to an initial assessment of the needs and circumstances of the child and the provision of services or other help. If children's social services decide to take no further action at this stage, feedback should be provided to the referrer. In the case of referrals from members of the public, this should be done in a manner that respects the confidentiality of the child. It may sometimes be apparent that emergency action should be taken at this stage to safeguard a

child (see paragraphs 8.69 – 8.76 of *Safeguarding Children*). Such action may be necessary when a child's life is in danger, for example through poisoning or toxic substances being introduced into the child's bloodstream. Emergency action should normally be preceded by an immediate strategy discussion between the police, children's social services, health and other agencies as appropriate; the legal; team from children's social services should also be included.

### **Initial assessment under s17 of the Children Act 1989**

4.19 An initial assessment under s17 of the Children Act 1989 is undertaken to determine "whether the child is in need, the nature of any services required and whether a further, more detailed core assessment should be undertaken" (paragraph 3.9 of the *Assessment Framework*). The initial assessment should be carefully planned, with clarity about who is doing what, as well as when and what information is to be shared with the parents. The child should be seen by a social worker and his or her wishes and feelings should be ascertained and taken account of in future plans.

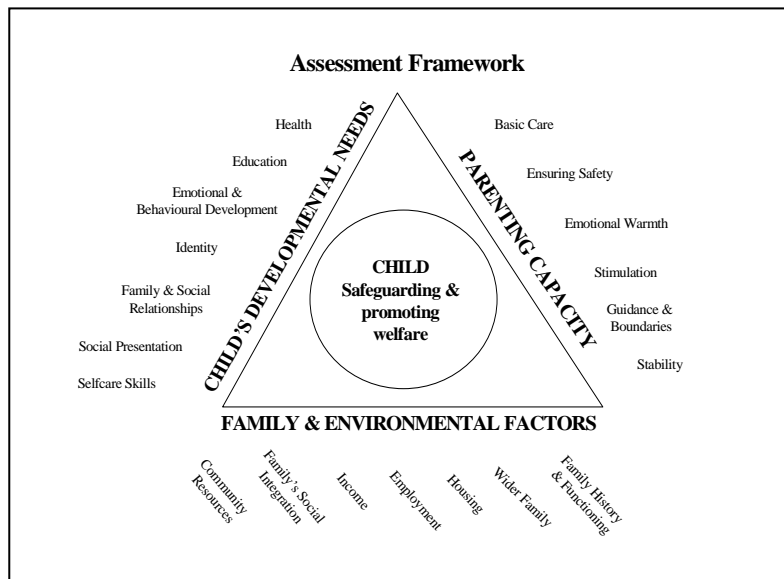
4.20 Children's social services have lead responsibility for undertaking an initial assessment in conjunction with all other relevant agencies. The initial assessment should follow the guidance set out in paragraphs 3.9 and 3.10 of the *Assessment Framework* and be concluded within a maximum of 7 working days from the date of the referral. Its timing and operation should be undertaken in collaboration with the lead paediatric consultant who is responsible for the child's health care (or a consultant's deputy nominated specifically for this case under consultant supervision). It should cover the dimensions within the three domains of Figure 1 of the *Assessment Framework* (see below) and address the four questions set out in paragraph 8.57 of *Safeguarding Children*:

- What are the developmental needs of the child?
- Are the parents able to respond appropriately to the child's identified needs? Is the child being adequately safeguarded from significant harm, and are the parents able to promote the child's needs and the child's developmental progress?
- What impact are the family functioning and history, the wider family and environmental factors having on the parents' capacity to respond to their child's needs and the child developmental progress?
- Is action required to safeguard and promote the welfare of the child?

4.21 The time taken to complete the initial assessment may be very brief if it quickly becomes clear that there is reasonable cause to suspect the child is suffering, or is likely to suffer, significant harm. For example, this may occur when toxicology results indicate the presence of medication that had not been prescribed. In some instances, the child's circumstances may require a more in-depth core assessment under s17 of the Children Act 1989 (paragraph 3.11 of the *Assessment Framework*) before any decision can be reached about whether the criteria are met for initiating a s47 enquiry. In addition, during the

course of providing services to a child and family, concerns may be raised about the possibility of illness being fabricated or induced.

**Figure 1: Assessment Framework**



4.22 On completion of the initial assessment, children’s social services, together with the paediatric consultant responsible for the child’s health care (or nominee) should decide on the next course of action. At this stage, careful consideration should be given to what the parents should be told, when and by whom, taking account of the child’s welfare (paragraph 8.65 of *Safeguarding Children*). Concerns should not be raised with a parent if it is judged that this action will jeopardise the child’s safety.

**Next steps**

***No suspected actual or likely significant harm***

4.23 The child may be a child in need and it may be appropriate to undertake a core assessment in order to determine what help may benefit the child and family. Alternatively, services may be offered based on the findings of the initial assessment. It may be helpful for relevant professionals to discuss the findings of the initial assessment to inform decisions about what types of services, including a more in-depth assessment, it would be appropriate to offer. Decisions about further action should be discussed with the parents in the light of the findings of the initial assessment and consideration of what would be most helpful to the child and family.

4.24 If at any point in the core assessment, or later in the course of professional involvement with the child and family, there is reasonable cause to suspect a child is suffering, or is likely to suffer, significant harm, a strategy discussion should be initiated.

### ***Suspected actual or likely significant harm***

- 4.25 Where the initial assessment identifies that the child is suspected to be suffering, or is likely to suffer, significant harm, children's social services are required by s47 of the Children Act 1989 to make enquiries to enable the local authority to decide whether it should take any action to safeguard and promote the child's welfare. Where a criminal offence may have been committed against the child, the police should be involved at the earliest opportunity. This will enable children's social services and the police to jointly consider how to proceed in the best interests of the child.
- 4.26 It is the responsibility of children's social services in the local authority area in which the child is currently located to initiate a strategy discussion or to make an application for an emergency protection order (under s44 of the Children Act 1989), unless appropriate alternative arrangements have been made with the responsible local authority. If the child is normally resident in another local authority, the one in which the child is currently found should negotiate a transfer of statutory responsibility to the child's local authority of residence and agree how the child's case will be managed before relinquishing lead responsibility for the child's safety and welfare.
- 4.27 Careful thought should be given to what parents are told, when and by whom, at the point it is decided to hold a strategy discussion. Children's social services should involve the police, the child's paediatric consultant and GP, the senior ward nurse (if the child is an inpatient), the school (if the child is of school age) and other relevant professionals in making these decisions.

### **Immediate protection**

- 4.28 If at any point there is medical evidence to indicate that the child's life is at risk, or there is a likelihood of serious immediate harm, an agency with statutory child protection powers should act quickly to secure the immediate safety of the child. Emergency action might be necessary as soon as a referral is received, or at any point in the involvement with the child and their family. Alternatively, the need for emergency action may only become apparent over time, as more is learned about the circumstances of a child or children. When considering whether emergency action is necessary, an agency should always consider whether action is also required to safeguard the welfare of other children in the same household (for example siblings), the household of an alleged perpetrator, or elsewhere. The nature of the abuse will be a key determining factor. For example, if it is known a child is being intentionally suffocated or poisoned, then immediate action should be taken. If the child is subject to verbal fabrication only, and not the induction of physical signs, it is unlikely that it will be necessary to act as quickly to secure the immediate safety of the child. However, the circumstances may change significantly if the carers become aware that professionals think the child's symptoms are being fabricated or induced. Decisions about possible immediate action to safeguard a child should therefore be kept under constant review.

## Strategy discussion

- 4.29 If there is reasonable cause to suspect the child is suffering, or is likely to suffer, significant harm, children's social services should convene and chair a strategy discussion that involves all the key professionals responsible for the child's welfare. It should, at a minimum, include children's social services, the police, the paediatric consultant responsible for the child's health and, if the child is an inpatient, a senior ward nurse. It is also important to consider seeking advice from, or having present, a paediatrician who has expertise in the branch of medicine, for example respiratory, gastroenterology, neurology or renal, that deals with the symptoms and illness processes caused by the suspected abuse. This would enable the medical information to be presented and evaluated from a sound evidence base. Other professionals involved with the child, such as the GP, health visitor and staff from education settings should also be involved as appropriate. It may be appropriate to also involve the local authority solicitor at this meeting. Staff should be sufficiently senior to be able to contribute to the discussion of information that is often complex, and to make decisions on behalf of their agencies. Decisions about undertaking covert video surveillance (see paragraphs 6.34 – 6.39) and keeping records secure (see paragraph 6.27) should be made at a strategy discussion.
- 4.30 The strategy discussion will be used to undertake the tasks set out paragraph 8.82 of *Safeguarding Children*. It is vital that all available information is carefully presented and evaluated, its accuracy having been verified at source where possible. When evaluating the information available, legal advice should be sought where appropriate. Where it is decided that there are grounds to initiate a s47 enquiry, decisions should be made about:
- how a core assessment as the means to carry out a s47 enquiry will be undertaken;
  - what further information is required about the child and family, and how it should be obtained and recorded;
  - whether it is necessary for records to be kept in a secure manner in order to safeguard the child's welfare, and how this will be ensured;
  - whether the child requires constant professional observation and, if so, whether or when the carer(s) should be present;
  - who will carry out what actions, by when and for what purpose, in particular the planning of further paediatric assessment(s);
  - any particular factors, such as the child and family's race, ethnicity and language, that should be taken into account;
  - the needs of siblings and other children with whom the alleged abuser has contact;
  - the nature and timing of any police investigations, including the analysis of samples. This will be particularly pertinent if covert video surveillance is being considered, as this will be a task for which the police should have responsibility; and
  - the needs of the parents or carers.
- 4.31 More than one strategy discussion may be necessary. This is likely where the child's circumstances are very complex and a number of discussions are required to consider whether and, if so, when to initiate s47 enquiries.



## **S47 enquiries as part of a core assessment**

- 4.32 The nature of any further medical tests will depend on the evidence available about how the signs and symptoms of illness might be being caused. The Royal College of Paediatrics and Child Health *Report on Fabricated or Induced Illness by Carers* (2002) which is currently being updated, will assist in further consideration of possible medical tests.
- 4.33 It is important to assess the child's understanding, if they are old enough, of their symptoms and the nature of their relationship with each significant family member (including all carers). Each of the carer's relationships with the child, the parents' relationships with each other and with the children in the family, as well as the family's position within their community should also be assessed.
- 4.34 The core assessment should also include the systematic gathering of information about the history of the child and each family member, building on that already gathered during the course of each agency's involvement with the child. Particular emphasis should be given to health (physical and psychiatric), education and employment, as well as receipt of state benefits and charitable donations relating to a disabled child, social and family functioning and any history of criminal involvement.
- 4.35 A range of specialist assessments may be required. For example, physiotherapists, occupational therapists, speech and language therapists and child psychologists may be involved in specific assessments relating to the child's developmental progress; child and adolescent and adult mental health professionals may be involved in assessments of individuals or of families.
- 4.36 Careful and detailed note taking by all staff, including health professionals, is very important for any subsequent police investigation or court action. Any unusual events should be recorded and a distinction should be made between events reported by the carer and those actually witnessed by staff from the time they began. Records should be timed, dated and signed. Most importantly, records should be kept in a secure manner so that unauthorised persons cannot access them.

## **Criminal investigation**

- 4.37 The police have a key role in assisting health and children's social services staff to understand the reasons for the child's signs and symptoms of illness. Whereas the police investigations may produce conclusive evidence of maltreatment, they may also confirm that the carer is not responsible for causing the child's condition. In this latter situation, the police may be involved in investigating who is responsible. If there is not evidence of a crime being committed, health care staff can continue looking for a medical problem that arises from an intrinsic illness within the child, rather than from externally induced or invented causes.
- 4.38 The nature and timing of any criminal investigations will depend on the medical evidence. Whether or not police investigations reveal grounds for instigating criminal proceedings, any evidence gathered by the police should be available to other relevant professionals to inform discussions about the child's welfare.

- 4.39 In cases where the police obtain evidence that a criminal offence has been committed by the parent or carer, and a prosecution is contemplated, it is important that the suspect's rights are protected by adherence to the Police and Criminal Evidence Act 1984. This would normally rule out, for example, the suspect being confronted with the evidence by a paediatrician or any other personnel from the statutory agencies, except for the police, who are the lead investigative agency.
- 4.40 Many of the children who have had illness fabricated or induced will be too young to be interviewed as part of any criminal investigation. If a decision is made to undertake an interview, the guidance set out in *Achieving Best Evidence in Criminal Proceedings: Victims and Witnesses and Using Special Measures* (Criminal Justice System, 2007) should be followed.

### **The outcome of s47 enquiries**

#### ***Concerns not substantiated***

- 4.41 Medical tests may identify a medical condition that explains the child's signs and symptoms and, therefore no further safeguarding action may be considered necessary. In this situation, it is important to discuss with the parents what further help or support they may require, by drawing on knowledge of the implications of the medical condition on the lives of the child and family members. This may be related to the child's state of health or to more general matters.
- 4.42 There may be situations where concerns remain about significant harm, and where tests and assessments have not identified a clear explanation for the child's signs and symptoms of illness. There may be a lack of independent evidence of their existence, even when the child is constantly observed or separated from the carer. This is more likely to occur where parents report the child is having problems of a non-specific nature, such as aches and pains, or allege allergies to foods or to their environment. There could be many explanations for these symptoms, including that they are being fabricated or induced. For these children, it is important to try to understand their origin and consider whether help is required. In particular, it is important to ensure that the child's daily life and normal activities are not being unnecessarily affected or limited. It may be that the child's health will require ongoing monitoring to see how it progresses. If problems have been recognised during the assessment process, the family may want to receive help, for example with parenting difficulties or with improving the family's way of relating to each other. In addressing wider family issues, it may be that the child's wellbeing improves.

#### ***Concerns substantiated, but child not judged to be at continuing risk of significant harm***

- 4.43 There may be substantiated concerns that a child has suffered significant harm, but it is agreed between the agencies involved with the child and family, that a plan for ensuring the child's future safety and welfare can be developed and implemented without the need for a child protection conference or a child protection plan (see paragraph 8.105 of *Safeguarding Children*). For example, the carer may have taken full responsibility for the harm they have caused the child or the family's circumstances may have changed. The development of

the plan may, however, require a core assessment to be completed. In these circumstances, the child's health and development would require careful monitoring by a paediatrician or other health professional over time, with milestones for progress clearly set out in the child in need plan. The nature and purpose of this monitoring by health and/or other agencies should be clearly explained to the child, as appropriate, and the parents.

- 4.44 Children's social services, in consultation with other agencies, should take carefully any decision not to proceed to a child protection conference where it is known that a child has suffered significant harm as a result of fabricated or induced illness. Paragraph 8.108 of *Safeguarding Children* states that:

*"A suitably experienced and qualified social work manager within in local authority children's social services should endorse the decision. Those professionals and agencies who are most involved with the child and family, and those who have taken part in the s47 enquiry, have the right to request that local authority children's social services convene a child protection conference if they have serious concerns that a child may not otherwise be adequately safeguarded. Any such request that is supported by a senior manager, or a named or designated professional, should normally be agreed. Where there remain differences of view over the necessity for a conference in a specific case, every effort should be made to resolve them through discussion and explanation, but as a last resort, LSCBs should have in place a quick and straightforward means of resolving differences of opinion."*

### **Concerns substantiated and child judged to be at continuing risk of significant harm**

- 4.45 Paragraph 8.109 of *Safeguarding Children* states that:

*"Where the agencies most involved judge that a child may continue to suffer, or to be at risk of suffering, significant harm, local authority children's social services should convene a child protection conference. The aim of the conference is to enable those professionals most involved with the child and family, and the child and family themselves, to assess all relevant information and plan how to safeguard the child and promote the welfare of the child."* This may include situations where the child's life has not been placed in immediate danger, but continuation of the fabrication or induction of illness would have major consequences for the child's long-term health or development (see paragraphs 2.15 – 2.18).

### **The initial child protection conference**

#### ***Timing***

- 4.46 *Safeguarding Children* states that an initial child protection conference should be held within 15 working days of the date of the strategy discussion. Paragraph 8.111 of *Safeguarding Children* states that there may need to be more than one strategy discussion in order to enable the best decisions to be taken about safeguarding the child's welfare. If more than one strategy discussion is held as part of a series of discussions, the initial child protection conference should be held within 15 working days of the last strategy discussion.

## **Attendance**

4.47 The following people should be involved in the conference:

- Professional staff: all relevant professionals who have been involved in the child's life should attend the conference, as well as those who are likely to be involved in future work with then child and family. Consideration should be given to inviting a professional who has expertise in working with children and families where a carer has fabricated or induced illness in a child. Their knowledge will be invaluable in helping conference members make sense of the information presented at the conference. It is also important to consider seeking advice from, or having present, a paediatric consultant who has expertise in the branch of paediatric medicine, for example respiratory, gastroenterology, neurology or renal, that deals with the symptoms and illness processes caused by the suspected abuse. This would enable the medical information to be presented and evaluated from a sound evidence base.
- Child: children should be involved in the initial child protection conference in ways appropriate to their age and understanding. This includes discussions with them about the purpose of the conference and the means by which they want their wishes and feelings to be conveyed, as well as what they want said and to whom. Some children may not understand what has been happening to them and may therefore find it difficult to understand what the professionals are telling them. Others may be very clear, but may not have been able to talk to a trusted adult, or may not have been listened to. All are likely to have suffered emotional abuse. This means that discussions should be carried out in a sensitive manner with the child knowing they are now safe. The safety of the child following the conference must also be carefully considered, and an understanding of how it is to be ensured should be conveyed to the child.
- Family members: parents should normally be invited to child protection conference and helped to participate. Exceptionally, it may be necessary to exclude one or more family members from all or part of the conference. This decision should be based on considerations of ensuring the child's safety and may be made by the conference chair on a case by case basis. Measures may also be required to protect professional staff from intimidation, either in the conference or after it.

4.48 It may not be possible for all family members to be present at the same time. The extent and manner of involvement of family members should be informed by what is known about them. The abusing carer may not be able to acknowledge their behaviour to their partner for fear of what that knowledge would do to their relationship. They should not be put under pressure to talk about their part in fabricating or inducing illness within the conference. The non-abusive parent may not have known about the abuse, or they may have had some idea that now makes better sense to them, but they may not wish to discuss it at a conference; again, their wishes should be respected. These are matters that should be addressed in a sensitive manner outside the conference.

### **Information for the conference**

- 4.49 Each agency should contribute a written report to the conference setting out the nature of their involvement with the family. This information should be precise and, where possible, validated at its source. The child may have been seen by a number of professionals over a period of time; children's social services have responsibility for ensuring that, as far as is possible, this chronology (with special emphasis on the child's medical history) has been systematically brought together for the conference. Where the medical history is complex, this should be done in close collaboration with the paediatric consultant responsible for the child's health care. The health history of any siblings should also be considered. The chair has responsibility for ensuring that additional or contradictory information is presented, discussed and recorded at the conference.
- 4.50 Careful consideration should be given to when agency reports will be shared with the child's parents. This decision will be made by the chair of the initial child protection conference in consultation with the professional responsible for each report.

### **Action and decisions for the conference**

- 4.51 The conference should decide whether the criterion set out in *Safeguarding Children*, namely that the child is at continuing risk of significant harm and is therefore in need of a protection plan, is met. It may be decided that the child will not be the subject of a child protection plan. In this situation, consideration should be given to the child's needs and what future help would assist the parents in responding to them.
- 4.52 If the child should be the subject of a child protection plan, an outline plan should be developed following the guidance set out in paragraph 8.135 of *Safeguarding Children*. Particular attention should be given to what steps will be necessary to safeguard the child's welfare; these will depend on the nature of the harm suffered by the child. If the child's life has been threatened by, for example, attempted smothering or poisoning, or introducing noxious substances intravenously, all necessary measures should be put in place to ensure that these actions cannot take place in the future. This may mean that an application is made to the family court seeking agreement to separating the child from the abusing parent and, if possible, being cared for solely by the other parent. If the abusing parent is unwilling to leave the house, agreement could be sought to the child being placed in an alternative family context, or the child could remain in hospital for further medical treatment before being well enough to be discharged. The nature of contact between the child and their parents must be carefully thought through to ensure it does not offer another opportunity to repeat the abuse. This may mean contact has to be closely supervised by a professional whose level of knowledge enables them to be alert to the precursors of further abusive behaviour.
- 4.53 Conference participants must be clear what actions will be taken to safeguard the child immediately after the conference, as well as in the longer term. For some children, it may be necessary to institute legal proceedings either immediately or soon after the conference has ended. This decision should be taken by children's social services in conjunction with their legal advisers. It is

important that the doctors involved with the child's health care agree to support this action, since it is their medical evidence that will form a key part of the evidence presented to a court.

- 4.54 The conference should also consider what action is required to protect any siblings in the family. It may be that the abusing parent transfers his or her abusive behaviour to another child in the family once the identified child is placed in a safe environment.
- 4.55 Knowledge of the parents' medical and psychiatric histories, in particular those of the abusing parent, should be considered. Services for the parents may be required immediately if, for example, it is known that there is a history of self-harming behaviour or a likelihood of a parent attempting suicide or developing other types of psychiatric symptoms.

### ***Action following the child becoming the subject of a child protection plan***

- 4.56 A key worker should be appointed from welfare agencies with statutory powers, ie local authority children's social services or the NSPCC, as set out in paragraphs 8.143 and 8.144 of *Safeguarding Children*. The outline child protection plan will have identified the most appropriate setting in which the child should live immediately following the conference – with whom and on what statutory basis. The plan should also have recommended the nature of contact between the child and the abusing parent, and between the child and other family members, and whether a professional person should supervise this contact. These matters should be kept under constant review as the child's situation may quickly change. The conference should also agree a contingency plan that addresses the possibility that the plan agreed at the conference cannot be put into action if, for example, a court application is not successful or a parent removes the child from hospital.
- 4.57 The child and family members should be provided with appropriate services whilst the core assessment is completed. The child may require further medical investigations to ascertain his or her current state of health, as well as receiving ongoing treatment. This could range from intensive involvement if the child is seriously ill as a result of their abuse, to no treatment but careful monitoring if the child has been found to have no medical problems and is healthy now that the abuse has stopped.
- 4.58 Parents with a psychiatric history may require immediate help if, for example, they have a history of attempting suicide or self-harming. This intervention with the parent will be part of the overall programme of work that focuses on the child's welfare. Information about past relationship difficulties and the nature and outcome of any previous therapeutic help should also inform decisions about how best to intervene with each family.

### **Core assessment**

- 4.59 The core assessment, which will have begun at the same time the s47 enquiries commenced, should be completed within a maximum of 35 working days, as set out in the *Assessment Framework*, recognising that some specialist assessments may not be able to be completed within this period. Indeed, it may only become clear that certain types of assessments are

required part way through or at the end of the core assessment. This is more likely to be so when the child's needs are very complex.

4.60 The assessment should follow the guidance set out in the Assessment Framework and should address:

- The child's current health status and his or her developmental progress, clarifying where possible the cause of any presenting symptoms, illness and/or developmental delay, ie what may have been organic in origin and what is likely to have been related to abuse. It should also ascertain the child's educational, emotional and behavioural level of development, as well as the nature their relationship with each family member and how they are perceived within the family and their local community. A thorough understanding of the child's needs is necessary to inform decisions about how best to intervene.
- The developmental needs of any siblings should also be assessed, using the *Assessment Framework*, as they may also be children in need. Siblings should be involved in future therapeutic work; it is important to understand how they perceive the health of their brother or sister.
- The parenting capacity of both parents should be assessed, as well as that of other carers or potential carers. The latter is particularly important if consideration is being given to other family members looking after the child. Their understanding of the abuse and their ability to believe that the child has been abused by another member of their family will inform decisions about where the child lives and contact arrangements with family members. Other members of the family may not be able to protect the child from future harm if they do not believe abuse has occurred, or where they cannot guarantee the child's safety from abuse whilst in their care.
- The capacity of the abusive parent to recognise their child's needs is very important. They may not be able to recognise the damage they have done to their child's health and it is therefore often helpful for a psychiatrist with expertise in this area to meet with the parent(s).
- The histories of both parents will provide valuable information about their needs, both as adults and as parents. It is important to ascertain the quality of the parents' relationship, including in situations where they are not living together. This information will inform decisions about what future work will be required with each parent individually, as a couple, as parents and as a family. It will also determine which professionals should be involved at what stage during the therapeutic process.
- An assessment of appropriate wider family members will provide information about the capacity of these adults to support the child and their parents. Many parents in these circumstances are isolated from their families, or have withheld information about difficulties they are experiencing in their parenting role. Family patterns around illness may also be identified, for example histories of illnesses that have not been medically identified or of a somatising behaviour.

4.61 All other professionals should liaise closely with children's social services (the lead agency) in gathering relevant historical material and integrating this within an assessment of the child's developmental needs and the capacity of the parents to respond to those needs within their wider family context. This information, including the capacity for change, should be used to inform decisions about the child's safety and future work with the child and family.

### **Analysis of the child's circumstances and future planning**

4.62 Chapter 4 in the *Assessment Framework* describes the processes by which information obtained during the assessment can be analysed, and professional judgement used to inform decisions about how best to intervene. Paragraph 4.1 states that the conclusion of the assessment should result in:

- an analysis of the needs of the child and parenting capacity to respond appropriately to those needs within their family context;
- identification of whether and, if so, where interventions will be required to secure the welfare of the child or young person;
- a realistic plan of action, a timetable and a process for review.

4.63 Paragraph 4.20 of the *Assessment Framework* states that "in drawing up a plan of intervention, careful distinction should be made between judgements about the child's developmental needs and parenting capacity, and decisions about how best to address these at different points in time". It then sets out a number of factors that should be taken into account when making decisions about how best to address the child's identified needs. In cases of fabricated or induced illness, these decisions should include ensuring the child is not the subject of further unwarranted medical intervention.

### **Intervention**

4.64 Where a child has had illness fabricated or induced, the child protection plan should be carefully constructed in the basis of the findings of the assessment. Decisions about how to intervene, including what services to offer, should draw on evidence about what is likely to work best to bring about good outcomes for the child (see paragraph 8.158 of *Working Together*). The core group has responsibility for developing and implementing the child protection plan within the outline plan agreed at the initial child protection conference (see paragraph 8.145 of *Safeguarding Children*).

4.65 Interventions should specifically address:

- the developmental needs of the child;
- the child's understanding of what has happened to them;
- the abusing carer/child relationship and parental capacity to respond to the child's needs;
- the relationship between the adult carers, both as adults and as parents; family relationships; and
- the management of any presenting signs, illnesses or reports of symptoms.



- 4.66 A key issue will be whether the child's needs can be responded to within his or her family context and within time-scales that are appropriate for the child. However, these time-scales may not be compatible with those for the carer who is in receipt of therapeutic help. This may mean that a child cannot be cared for safely by this carer and has therefore to be living in a family setting where the carer is not present. In the longer term, it may mean that it would be in the best interests of the child to be placed in an alternative family context.
- 4.67 There is likely to be intensive family activity in the period immediately following the initial child protection conference. This activity should be sustained over a significant period of time to ensure that the child's long-term developmental needs are met. As a result of interventions, either the required changes will take place within the family system, enabling the child to be safe and healthy within their family, or an alternative family context will have to be identified that will be able to respond to the child's ongoing needs.
- 4.68 Children who have had illness fabricated or induced may continue to experience the consequences of this abuse, irrespective of where they are placed permanently, whether reunited with their families or placed in new families. This is particularly so in relation to their behavioural and emotional development (Bools et al, 1993). These findings suggest that therapeutic work with the child should continue, irrespective of where the child is placed, in order to ensure the needs of the child are responded to appropriately.
- 4.69 Interventions should address the child's physical, social and emotional needs. If the child has been very ill as a result of their abuse, he or she may require a period of hospitalisation before being well enough to be discharged. In parallel, work is likely to be necessary with family members in different groupings depending on the agreed plan. This will include the relationship between the child and the carers responsible for the abuse (usually the child's mother); the parents' relationship with each other, with the abused child, and with all their children; the family's relationships with health professionals; and individual work with the adult responsible for the abuse.
- 4.70 If the plan is to assess whether the child can be reunited with a carer responsible for the abuse, very detailed work will be required to help this carer develop the necessary parenting skills. For younger children, this may involve the parents learning to feed the child in a pleasant manner, to play with the child and facilitate their developmental progress, and to respond to the child's needs in an age-appropriate manner. For older children, this may involve the parents learning to interact with them as a well and healthy child, ensuring they attend school, and facilitating the development of normal sibling and peer relationships. For all children, this should include the appropriate accessing of health care by their carers.
- 4.71 Paragraph 4.31 of the *Assessment Framework* states that:

*"It is important that services are provided to give the family the best chance of achieving the required changes. It is equally important that, in circumstances where the family situation is not improving or changing far enough to respond to the child's needs, decisions are made about the long-term future of the child. Delay can result in the child not receiving the help they require and having their health or development impaired."*

## **Child protection review conference**

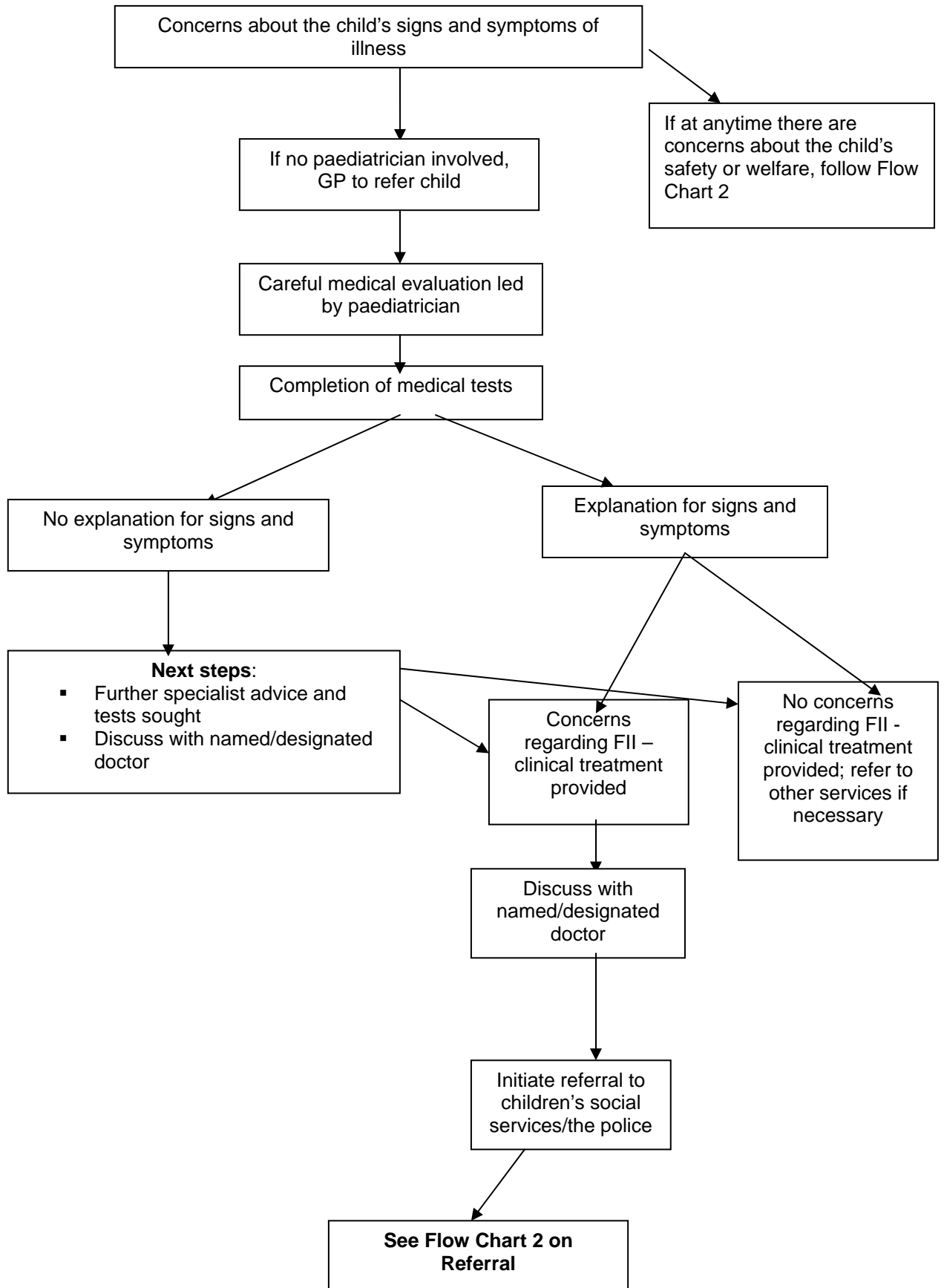
- 4.72 The child protection review conference and decision making processes should follow the guidance in *Safeguarding Children*. Decisions should be made on the basis of evidence of the child's developmental progress and meeting the targets set for improvement, as well as changes in the way in which the family functions. The child must be living within a safe family environment.
- 4.73 It has been recognised that in families where a child has been maltreated, there are some parents who will not be able to change sufficiently within the child's time-scales in order to ensure that the child does not continue to suffer significant harm. Paragraph 4.25 of the *Assessment Framework* states that "*In these situations decisions may need to be made to permanently separate the child and parent(s). In these circumstances, decisions about the nature and form of any contact will also need to be made, in the light of all that is known about the child and family, and reviewed throughout childhood. Key to these considerations is what is in the child's best interests, informed by the child's views (Cleaver, 2000).*"
- 4.74 The *Assessment Framework* sets out criteria that have been identified as suggesting a poor outcome for reuniting children who have been maltreated with their parents (paragraph 4.26); those features that suggest there are better prospects of achieving good outcomes for children (paragraph 4.28); and those where the findings from the core assessment may provide an uncertain picture of the family's capacity to change (paragraph 4.30). These criteria should be borne in mind when assessing a family, and the impact of therapeutic help on the parents' capacity to respond appropriately to the child's needs.
- 4.75 Outcomes for children who have had illness fabricated or induced are known to be better where the work is carried out within a clear protective framework and a sustained therapeutic programme is undertaken on a multi-agency, multi-disciplinary basis, focusing on safeguarding and promoting the child's welfare (see paragraphs 2.35 – 2.39).

## **Pre-birth child protection conference**

- 4.76 Evidence of illness having been fabricated or induced in an older sibling or another child should be carefully considered during the pregnancy of a woman who is known to have abused a child in this way. Therapeutic work may have been successfully undertaken in relation to the abuse of a previous child, but an assessment of the unborn child should be undertaken. A pregnant woman may have a history of fabricating illness in herself during a previous pregnancy. This could include the fabrication of medical problems while the baby is in the womb. She may also be behaving in ways that pose risks to the health of the unborn child in the current pregnancy. A pre-birth child protection conference should be convened if, following s47 enquiries, either the unborn child's health is considered to be at risk or the baby is likely to be at risk of harm following their birth.

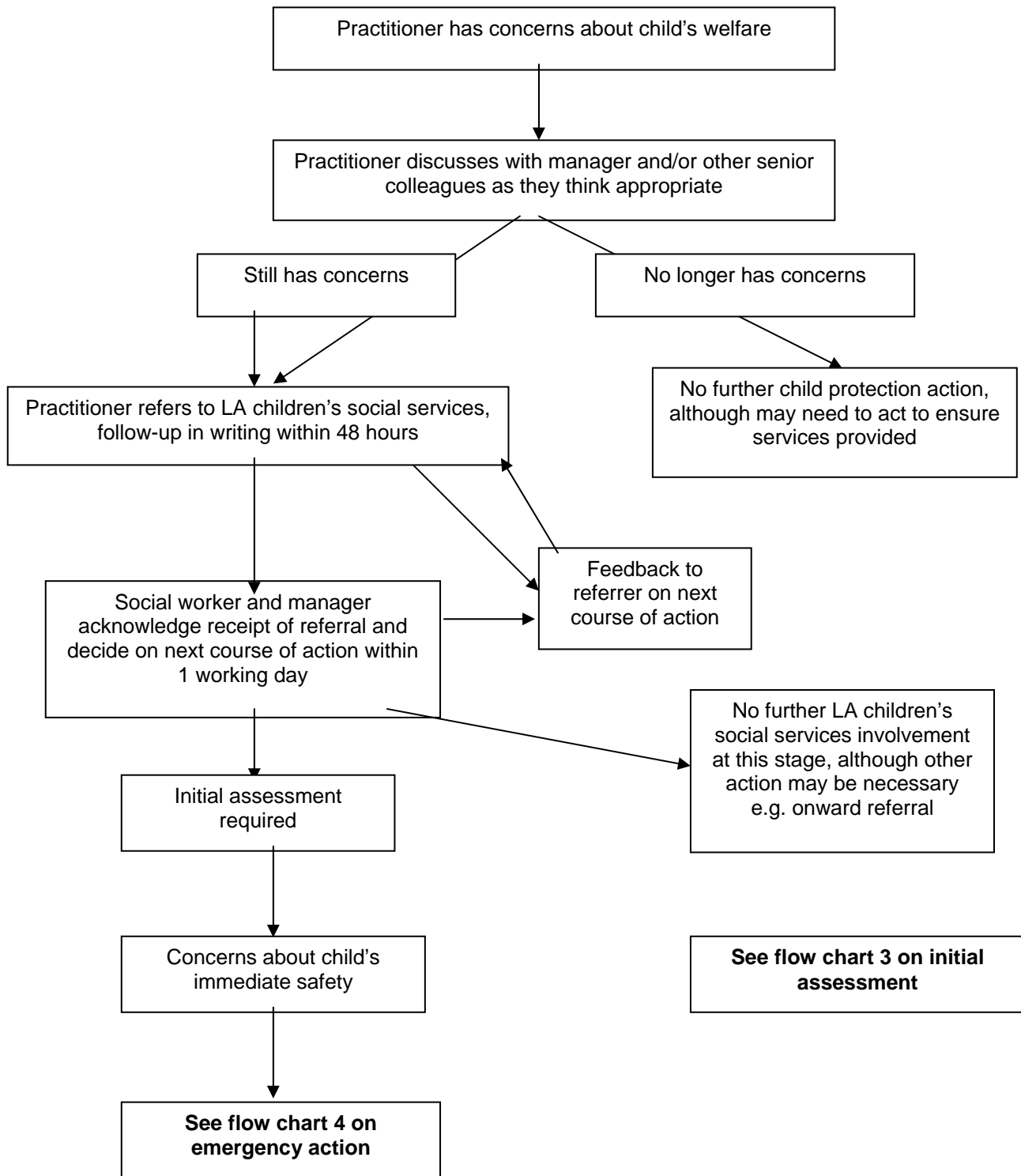
# FLOW CHART 1

## MEDICAL EVALUATION WHERE THERE ARE CONCERNS REGARDING SIGNS AND SYMPTOMS OF ILLNESS



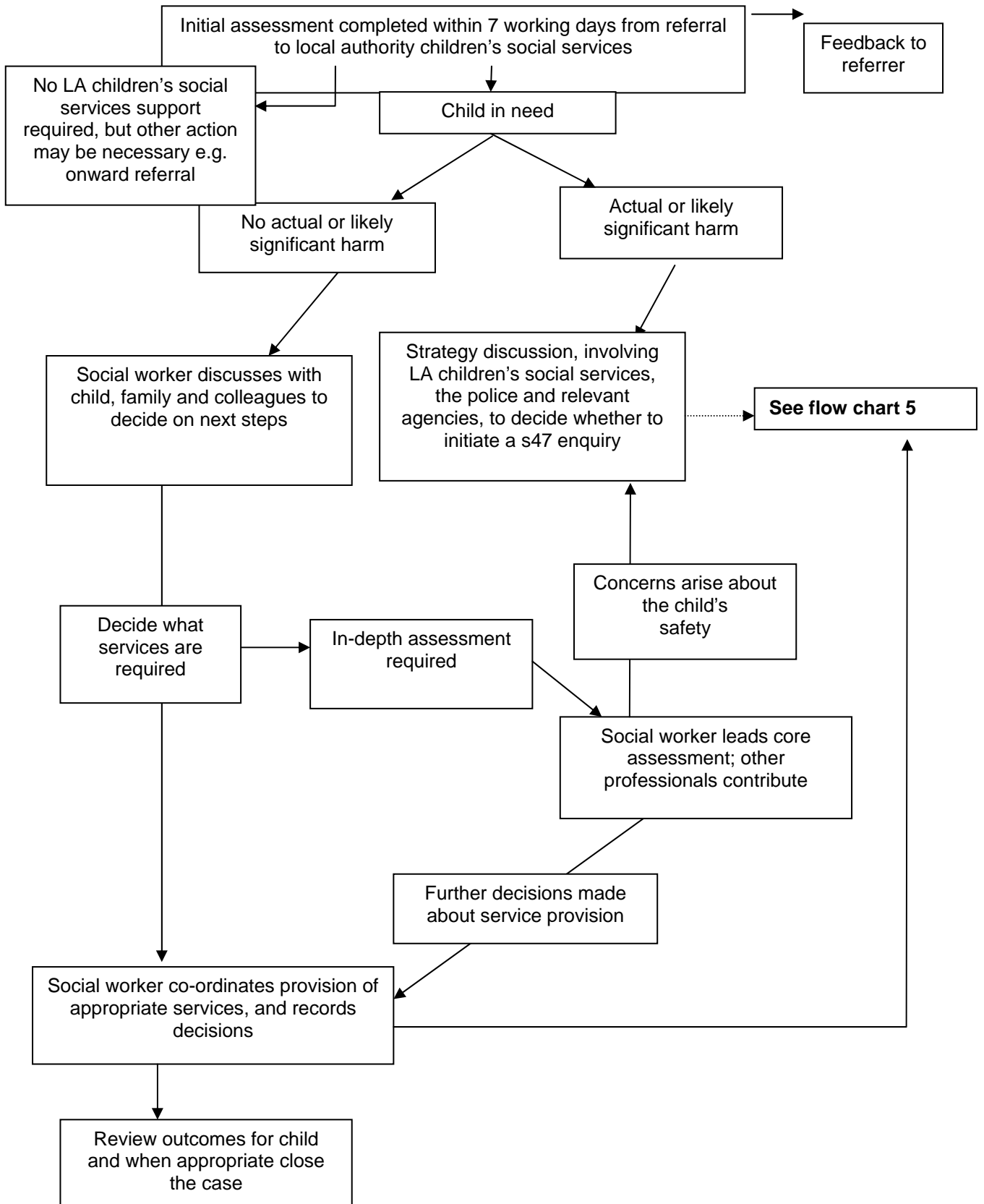
## FLOW CHART 2

### REFERRAL



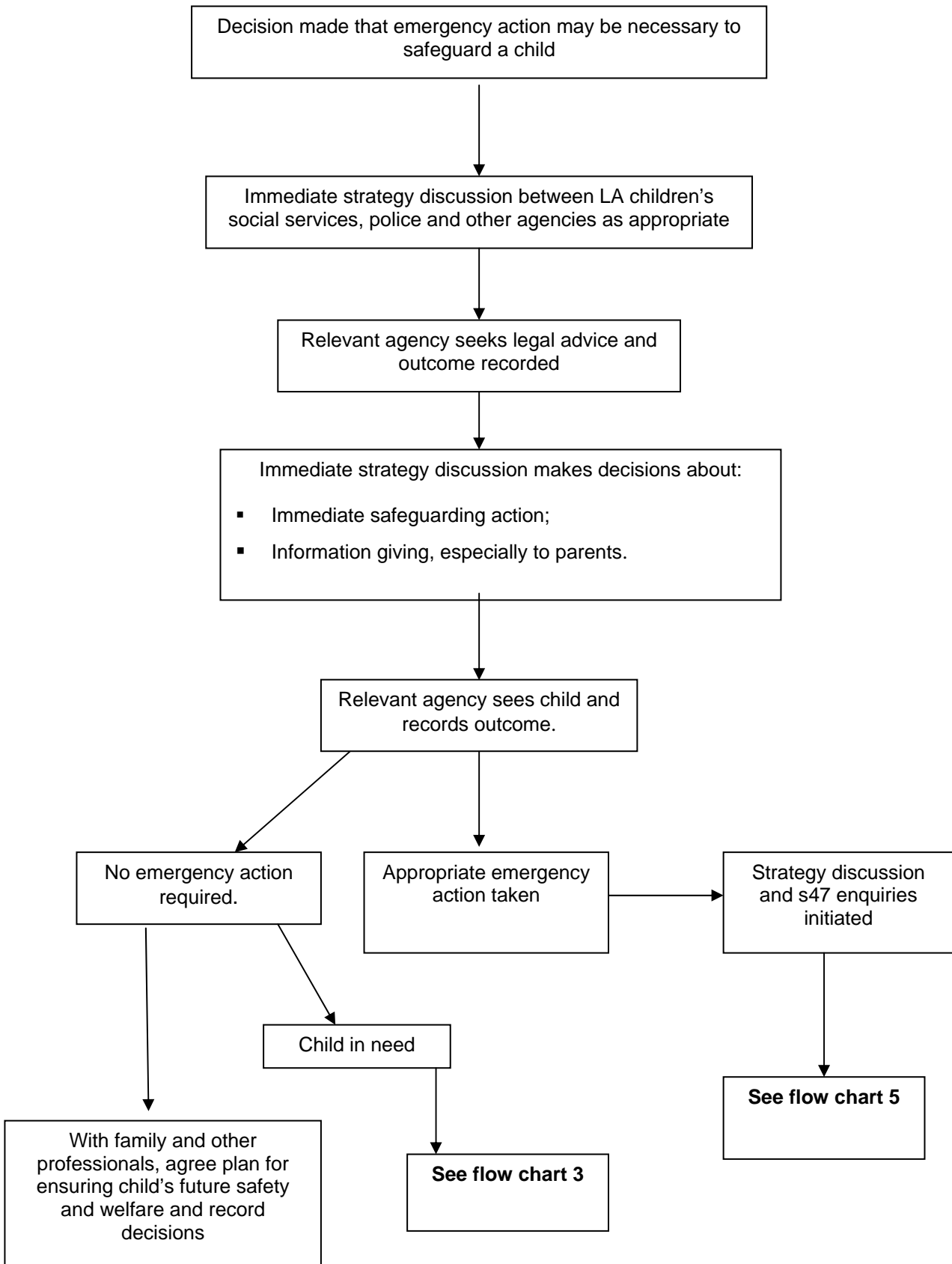
### FLOW CHART 3

#### WHAT HAPPENS FOLLOWING INITIAL ASSESSMENT?



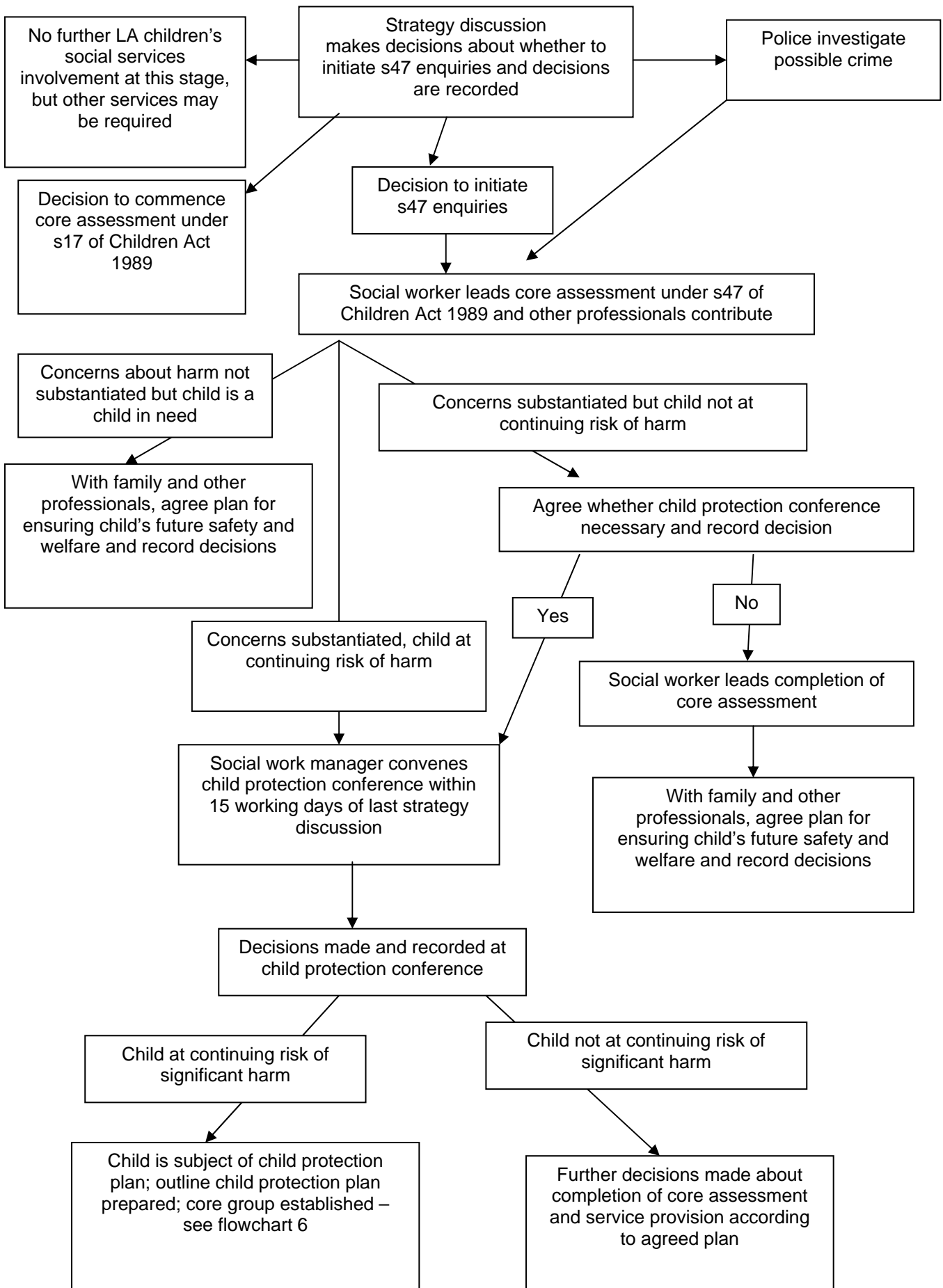
## FLOW CHART 4

### URGENT ACTION TO SAFEGUARD CHILDREN



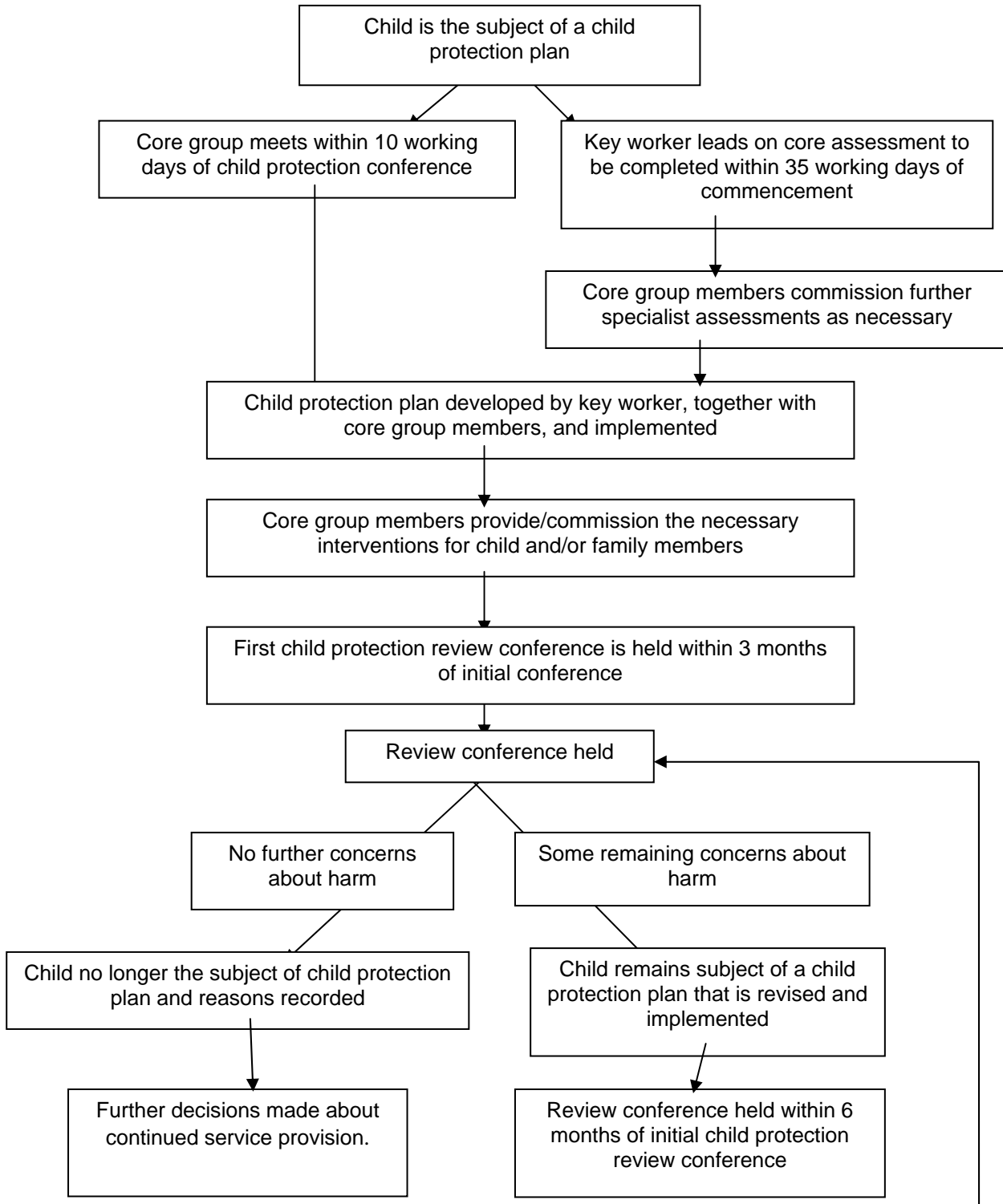
## FLOW CHART 5

### WHAT HAPPENS AFTER THE STRATEGY DISCUSSION?



## FLOW CHART 6

### WHAT HAPPENS AFTER THE CHILD PROTECTION CONFERENCE, INCLUDING THE REVIEW PROCESS?





## **5 ROLE AND RESPONSIBILITIES OF THE LOCAL SAFEGUARDING CHILDREN BOARD**

- 5.1 The roles and responsibilities of Local Safeguarding Children Boards (LSCBs) are set out fully in Chapter 4 of *Safeguarding Children*.
- 5.2 Each LSCB will have in place local procedures for safeguarding and promoting the welfare of children. these will include guidance on:
- thresholds for referring children who may be in need to local authority children's social services;
  - the conduct of s47 enquiries and associated police investigations;
  - child protection conferences; and
  - deciding whether a child should be the subject of a child protection plan.
- 5.3 These procedures will also apply to the management of cases involving fabricated or induced illness, but should be read in conjunction with this guidance. It is not intended that LSCBs have separate guidance on fabricated or induced illness, but local LSCB procedures should reflect this guidance.

### **Specific responsibilities of an LSCB**

- 5.4 The specific responsibilities of an LSCB in relation to cases involving fabricated or induced illness are to:
- ensure that the LSCB safeguarding children procedures reflect this guidance;
  - ensure that there is a level of agreement and understanding across agencies about operational definitions and thresholds for referral and intervention, and to communicate clearly to individual services and professional groups their shared responsibility for protecting children within the framework of this national guidance;
  - encourage and help develop effective working relationships between different services and professional groups, based on trust and mutual understanding;
  - audit and evaluate how well local services work together to safeguard children, to improve joint working in the light of knowledge gained through national and local experience and research, and to make sure that any lessons learned are shared, understood and acted on;
  - identify the number of children in need who are at risk of, or have suffered, significant harm as a result of fabricated or induced illness, and identify resource gaps (in terms of funding and/or the contribution of different agencies);
  - help improve the quality of work to safeguard and promote the welfare of children who have illness fabricated or induced, by

specifying the training needs of practitioners and managers, and ensuring that this training is delivered; and

- raise awareness within the wider community of the need to safeguard children who may be at risk from this type of abuse and promote their welfare, and explain how the wider community can contribute to these objectives.

5.5 Where the LSCB has a planned programme of work on fabricated or induced illness, this should be agreed and endorsed by all the Board members within the framework of the Children and Young People's Plan, and should be set out in its own plan. The LSCB may find it useful to set up a working group or sub-group, on a short-term or standing basis, to carry out specific tasks and/or to provide specialist advice in relation to this guidance.

## **6 WORKING WITH CHILDREN AND FAMILIES: KEY ISSUES**

### **Introduction**

- 6.1 Common principles and ways of working that should underpin the practice of all agencies and professionals working to safeguard children and promote their welfare are set out in Chapter 7 of *Safeguarding Children*. This chapter describes how these principles might be used when working with families where illness is being fabricated or induced.
- 6.2 Family members have a unique role and importance in the lives of children, and children attach great value to their family relationships. Family members know more about their family than any professionals could possibly know, and well-founded decisions about a child should draw on this knowledge and understanding. Family members should normally have the right to know what is being said about them, and to contribute to important decisions about their lives and those of their children. Research findings brought together in *Child Protection: Messages from Research* (Department of Health, 1995) and *The Children Act Now: Messages from Research* (Department of Health, 2001) endorse the importance of good relationships between professionals and families in helping to bring about the best possible outcomes for children.

### **What is meant by working with children and families in safeguarding children?**

- 6.3 Where there are concerns about significant harm to a child, children's social services have a statutory duty to make enquiries and, if necessary, statutory powers to intervene to safeguard and promote the child's welfare. Where there is compulsory intervention in family life in this way, parents should still be helped and encouraged to play as large a part as possible in decisions about their child. Children of sufficient age and understanding should be kept fully informed of processes involving them, should be consulted in a sensitive manner, and decision about their future should take account of their wishes and feelings.
- 6.4 Principles underpinning work to safeguard and promote the welfare of children are set out in Chapter 7 of *Safeguarding Children*. One of these principles is to involve children and families such that children are listened to and their wishes and feelings understood, as well as working with parents or colleagues so that they feel respected and informed about what is happening.
- 6.5 Partnership does not always mean agreeing with parents or other adult family members, or always seeking a way forward that is acceptable to them. The aim of safeguarding children processes is to ensure the

safety and welfare of the child, and the child's interests should always be paramount. Not all parents may be able to safeguard their children's welfare, even with help and support. Some children may be vulnerable to manipulation by a perpetrator of abuse. A small number of parents are actively dangerous to their children, other family members or professionals, and are unwilling and/or unable to change. A clear focus on the child's safety and what is best for the child should always be maintained.

### **Working with children and families**

- 6.6 Those working together to safeguard children should agree a common understanding in each case, and at each stage of work, of how children and families will be involved in safeguarding children processes, and what information is shared with them. There should be a presumption of openness, joint decision making, and a willingness to listen to families and capitalise on their strengths, but the guiding principle should always be what is in the best interests of the child.
- 6.7 Where it is suspected or confirmed that illness has been fabricated or induced in a child, all decisions about what and when to tell parents and children should be taken by senior staff within the multi-agency team. Generally, professionals should seek to discuss any concerns with the family and, where possible, seek their agreement to action. However, this should only be done where such discussion and agreement seeking will not place a child at increased risk of significant harm. In all cases where the police are involved, the decision about when to inform the parents about referrals from third parties will have a bearing on the conduct of police investigation (see paragraph 8.32 of *Safeguarding Children*).
- 6.8 Some information known to professionals will be treated confidentially and should not automatically be shared in front of some children or adult family members. Such information might include personal health information about particular family members, unless consent has been given, or information which, if disclosed, could compromise criminal investigations or proceedings.
- 6.9 Agencies and professionals should be honest and explicit with children and families about professional roles, responsibilities, powers and expectations, and about what is and is not negotiable.
- 6.10 Working relationships with families should develop according to individual circumstances. From the outset, professionals should assess if, when and how the involvement of different family members – children and adults – can contribute to safeguarding and promoting the welfare of a particular child or group of children. This assessment may change over time, as more information becomes available or as families feel supported by professionals. Professional supervision and peer group discussions are important in helping to explore knowledge

and perceptions of families' strengths and weaknesses and the safety and welfare of the child within the family, and how family members can play a role in the future safety of the child.

- 6.11 Family structures are increasingly complex. In addition to those adults who have daily care of a child, estranged parents (for example birth fathers), grandparents or other family members may play a significant part in the child's life, and some may have parental responsibility even if they are not involved in day to day care. Some children may have been supported by adults from outside the family during family difficulties. Professionals should make sure that they pay attention to the views of all those who have something significant to contribute to decisions about the child's future. Children can provide valuable help in identifying adults they see as important supportive influences in their lives. It is equally important to identify any adult family members who may knowingly or unknowingly support the abusive parent in ways that mean the child is continuing to be abused. The nature of all family relationships should be taken into account when planning placements outside the birth family and contact between the child and the abusing parent.

### **Involving children**

- 6.12 Research has shown that over 50% of children in whom illness is fabricated or induced are aged under 5 years. This means that a significant proportion of children about whom there are concerns will be unlikely to be directly involved in discussions about the nature of their abuse. For these young children, it will be important to gain information by observing the child's interactions with family members, peers and professional staff and noticing any differences between the child's interactions with different people, as well as listening carefully to the child. For children who use specific communication methods, it is important that they are enabled to communicate using their normal means of communication. This may require the involvement of a specialist with knowledge of the child's means of communication (see paragraphs 3.128 – 3.138 of the *Assessment Framework* practice guidance).
- 6.13 Listening to children and hearing their messages requires training and special skills, including the ability to win their trust and promote a sense of safety. Most children feel loyalty towards those who care for them, and have difficulty in saying anything against them. Many do not wish to share confidences, or may not have the language or concepts to describe what has happened to them. Some may fear reprisals, or their removal from home and loss of siblings.
- 6.14 Children of sufficient age and understanding often have a clear perception of what needs to be done to ensure their safety and wellbeing. Some older children may be very aware of, for example, being given non-prescribed substances by a parent or being

encouraged to fabricate different types of illness behaviour. Whilst all children will want this abusive behaviour to stop, some may knowingly choose to co-operate with their parents' wishes in order to maintain current family relationships, but remain clear in their own minds that they are well. Other children, as a result of the way in which their parents have taught them to behave as if they are ill, may not be able to distinguish between reality and fabrication. These children seem to come to believe that their symptoms are real and this false perception of being ill is reinforced and rewarded by their abusing parent.

- 6.15 If children have had illness fabricated or induced, professionals will need to decide when and how to involve them in the decision making and planning processes. These decisions should be taken as part of the overall plan for therapeutic work with the family and should take account of the fragile family relationships that have enabled the abuse of the child. Taking their age and understanding into account, children should know how safeguarding children processes work, how they can be involved, and that they can contribute to decisions about their future. However, they should understand that, ultimately, decisions will be taken in the light of all the information available that has been contributed by themselves, professionals, their parents and other family members and other significant adults.

### **Support, advice and advocacy to children and families**

- 6.16 However sensitively enquiries are handled, many families perceive as painful and intrusive professional involvement in their lives that they have not requested, particularly if they feel that their care of their children is being called into question; this should always be acknowledged. Agencies and professionals can do a considerable amount to make safeguarding processes less stressful for families by adopting the principles set out above. Families will also feel better supported if it is clear that interventions in their lives, while firmly focused on the safety and welfare of the child, are concerned also with the wider needs of the child and family.
- 6.17 Children and families may be supported through their involvement in safeguarding children processes by advice and advocacy services, and they should always be informed of those services that exist locally and nationally. Independent advocates provide independent and confidential information, advice, representation and support, and can play a vital role in ensuring children have appropriate information and support to communicate their views in formal settings, such as child protection conferences and court proceedings.
- 6.18 Where children and families are involved as witnesses in criminal proceedings, the police, witness support services and other services such as those provided by Victim Support, can do a great deal to explain the process, make it feel less daunting and ensure that children are prepared for and supported in the court process. The practice

guidance *Provision of Therapy for Child Witnesses Prior to a Criminal Trial* (2001) makes it clear that the best interests of a child are paramount when deciding whether, and in what form, therapeutic help is given to child witnesses. Information about the Criminal Injuries Compensation Scheme should also be provided in relevant cases.

### **Information sharing**

- 6.19 Sharing of information in cases of concern about children's welfare enables professionals to consider jointly how to proceed and in the best interests of the child and to safeguard children more generally.
- 6.20 In dealing with alleged offences involving a child victim, the police should normally work in partnership with children's social services and/or other agencies. While the responsibility to instigate a criminal investigation rests with the police, they should consider the views expressed by other agencies. There will be less serious cases where, after discussion, it is agreed that the best interests of the child are served by children's social services led intervention, rather than a full police investigation.
- 6.21 In deciding whether there is a need to share information, professionals should consider their legal obligations, including whether they have a duty of confidentiality to the child. Where there is such a duty, the professional may lawfully share information if a competent child (or the parent of a child who lacks competence) consents, or if there is a public interest of sufficient force; this must be judged by the professional on the facts of each case. Where there is a clear risk of significant harm to a child, or serious harm to adults, the public interest test will almost certainly be satisfied. However, there will be other cases where practitioners will be justified in sharing some confidential information in order to make decisions on sharing further information or taking action – the information shared should be proportionate.
- 6.22 The child's best interests must be the overriding consideration in making decisions about sharing information (see paragraphs 8.31 and 8.32 and Chapter 14 of *Safeguarding Children*). Any decision on whether or not to share information must be properly documented. Decisions in this area need to be made by or with the advice of, people with suitable competence in child protection work, such as named or designated professionals or senior managers.

### **The Data Protection Act 1998**

- 6.23 The Data Protection Act 1998 requires that personal information is obtained and processed fairly and lawfully; only disclosed in appropriate circumstances; is accurate, relevant and not held any longer than necessary; and is kept securely. Where information is not held under any duty of confidentiality, the Act allows for disclosure without the consent of the subject in certain conditions. These include

for the purposes of the prevention or detection of crime, or the apprehension or prosecution of offenders, and where failure to disclose would be likely to prejudice those objectives in a particular case. Legal advice should be sought where appropriate, or in cases of doubt.

## **Record keeping**

6.24 The recording and retention of information, including information about covert video surveillance, should be made in accordance with the Data Protection Act 1998. In particular, bodies need to be mindful of the eight data protection principles, for example:

- the requirement that the information is adequate, relevant and not excessive in relation to the purpose or purposes for which it is held (principle 3);
- it is accurate and up to date (principle 4);
- it is not kept for any longer than it is necessary to do so (principle 5); and
- appropriate technical and organisational measures are taken to guard against unlawful or unauthorised processing or accidental loss or destruction of, or damage to, the information (principle 7).

6.25 Good record keeping is an important part of the accountability of professionals to those who use their services. It helps to focus work and is essential to support effective working across agency and professional boundaries. Clear and accurate records ensure that there is a documented account of an agency or professional's involvement with a child and/or family. They help with continuity when individual workers are unavailable or change, and they provide an essential tool for managers to monitor work, or for audit and peer review. Records are an essential source of evidence for s47 enquiries, and may need to be disclosed in court proceedings. In cases where enquiries do not result in the substantiation of referral concerns, records should be retained in accordance with record retention policies of the relevant agency. These policies should ensure that records are stored securely and can be retrieved promptly and efficiently. All records should be kept securely to prevent unauthorised access.

6.26 To serve these purposes, records should use clear, straightforward language. They should be concise and should be accurate not only in fact, but also in differentiating between opinions, judgements and hypothesis. Where it is considered that illness may be being fabricated or induced, the records relating to the child's symptoms, illnesses, diagnosis and treatments should always include the name (and agency) of the person who gave or reported the information, and be dated and signed legibly. All telephone conversations should be fully recorded.



- 6.27 Well kept records provide an essential underpinning to good safeguarding children practice, and are particularly important in cases where it is suspected that illness is being fabricated or induced in a child; they are equally important when abuse is substantiated. Information should be brought together from a number of sources, and their veracity and accuracy checked before making careful professional judgements on the basis of this information. Records should be clear and comprehensive; judgements made and action and decisions taken should be carefully recorded. Health records, in particular, should accurately record all investigations, results, observations and consent to undertake examinations or treatment. Doctors should follow the principles of record keeping set out in the General Medical Council's *Good Medical Practice* (2006). Documents should include photographic evidence and good diagrams depicting the site of any injuries along with measurements. Nurses and midwives should follow the principles of good record keeping set out in the Nursing and Midwifery Council's *Advice on Record Keeping* (2006). Where decisions have been taken jointly across agencies, or endorsed by a manager, this should be clearly recorded. All decisions to undertake covert video surveillance should be recorded in the child's records held by each agency involved in the decision and signed by a senior manager.
- 6.28 Where a child has been referred to children's social services, information about the referral and subsequent work undertaken with child and family must be recorded. These records should include a detailed chronology of the case. Specifically, the reader should be able to track:
- the relevant history of the child and family that led to any statutory intervention;
  - the nature of these interventions, including planned outcomes;
  - the means by which change is to be achieved; and
  - the progress that is being made in achieving these outcomes.
- 6.29 The recording of a detailed chronology that includes the medical, psychiatric and social histories of the child, parents, siblings and other significant family members is particularly important when identifying fabricated or induced illness in a child. It enables patterns of presentation for medical treatment to be recognised not only for the child, but also across generation boundaries. It will also inform decisions about how best to provide the services necessary to safeguard the child's welfare and achieve change in the family.
- 6.30 Careful consideration should be given to which agencies and professionals need to be informed about relevant changes of circumstances, for example to the change of GP of a child who is the subject of a child protection plan. Each agency should ensure that, when a child moves from their area, the child's records are transferred promptly to the relevant agency within the new locality. A telephone

discussion followed up by a written summary may be necessary, pending transfer of the records to ensure continuity of safe care. Where children have had illness fabricated or induced, it is essential that the new professionals involved are fully aware of the child's history, to enable them to continue to monitor appropriately the child's health and development. Many families use NHS Direct, who are able to flag up when a child has a child protection plan if they are notified of this information.

- 6.31 Requests for access to the child's records should be actioned in accordance with each agency's policy and procedures. Where a child is not Gillick competent, and a parent seeks access to their medical notes, access to all or part of the notes can be denied where disclosing the information would, in the view of an appropriate professional, be likely to cause serious harm to the physical or mental health or condition of the child or any other person. Access should also be denied if the child explicitly or implicitly makes it clear that they would not want information to be disclosed to their parents.
- 6.32 A health professional is defined in s69 of the Data Protection Act 1998 and includes a registered medical practitioner, a registered nurse or midwife, a clinical psychologist or speech and language therapist. An appropriate health professional is broadly the health professional who has the most recent and relevant care of the child.
- 6.33 Where there is any doubt about the retention or disclosure of information, legal advice should be sought.

### **Use of covert video surveillance**

- 6.34 The use of covert video surveillance (CVS) is governed by the Regulation of Investigatory Powers Act 2000 (the 2000 Act). After a decision has been made at a multi-agency strategy discussion to use CVS in a case of fabricated or induced illness, the surveillance should be undertaken by the police. The police should control the operation and accountability for it held by a police manager. The police should supply and install any equipment and be responsible for the security and archiving of the videotapes.
- 6.35 CVS should be used if there is no alternative way of obtaining information that will explain the child's signs and symptoms, and the multi-agency strategy discussion meeting considers that its use is justified, based on the medical information available (see also paragraph 5.7 of *Fabricated or Induced Illness by Carers* (Royal College of Paediatrics and Child Health, 2002). The policy will only be able to carry out CVS if they obtain the necessary authorisation under the 2000 Act. In summary, this means that they will need to demonstrate that the use of CVS is necessary to detect or prevent crime or serious crime within the meaning of the 2000 Act, depending on the type of surveillance intended, and that the evidence cannot be

gathered by less intrusive means. It is therefore likely to be used in a minority of cases. It is important that only those who need to know CVS is being used are involved in discussions and planning about its use. When it has been decided to use CVS, the LSCB safeguarding children procedures should be followed. Police officers should carry out any necessary monitoring, and all personnel, including nursing staff, who will be involved in its use should have received specialist training in this area.

- 6.36 The consultant paediatrician responsible for the child's care should ensure that the necessary medical and nursing staff are available to support the police during this operation. Their role will be to provide the child with immediate and appropriate health care when necessary. The level and nature of health involvement during the period of CVS should be agreed at the strategy discussion and all relevant staff briefed on the arrangements for the child's health care.
- 6.37 The safety (both short and long-term) and health of the child is the overriding factor in the planning and carrying out of CVS. The primary aim of undertaking CVS is to identify whether the child is having illness induced; of secondary importance is the obtaining of criminal evidence. Legal advice should be sought where appropriate, or in cases of doubt.
- 6.38 Children's social services should have a contingency plan in place that can be implemented immediately if CVS provides evidence that the child is being harmed.
- 6.39 Plans should also take account of the possibility that there may be no evidence of abuse but the child may be a child in need.

### **Allegations against staff**

- 6.40 Experience has shown that children can be subjected to abuse by those who work with them in all settings. Allegations may arise from a range of sources, including children themselves, parents, staff, foster carers or volunteers. Regardless of the source of the concern, allegations should be taken seriously and treated in accordance with Chapter 12 of *Safeguarding Children* and the soon to be issued guidance on *Safeguarding Children in Education: the role of local authorities and governing bodies under the Education Act 2002*.
- 6.41 In this area of work, it is also the case that concerns may be expressed by parents/carers about one or more members of medical, nursing or other staff who are responsible for medical investigation, diagnosis or treatment of their child. Such concerns may or may not include elements of alleged abuse by the member of staff against the subject child. Similarly, such expressions of concern may not relate to allegations of actual abusive behaviour by staff, but instead, in effect, be complaints that should be dealt with in accordance with the relevant agency's complaints handling process (see paragraph 6.61).

- 6.42 If there is cause to suspect a child is suffering, or is likely to suffer, significant harm, a strategy discussion should be convened in accordance with paragraph 8.68 of *Safeguarding Children*. In these cases, the strategy discussion should include a representative of the employer (unless there are good reasons not to do that) and should take account of any information the employer can provide about the circumstances or context of the allegations.
- 6.43 There may be up to three strands in the consideration of allegations:
- police investigation into a possible offence;
  - enquiries and assessment by children's social services about whether a child is in need of protection or in need of services; and
  - consideration by an employer of disciplinary action in respect of the individual.
- 6.44 It is important that employers keep a clear and comprehensive summary of any allegations made, details of how the allegations were followed up and resolved, and of any action taken and decisions reached. These should be kept in a person's confidential personnel file and a copy should be given to the individual. Such information should be retained on file, including for people who leave the organisation, at least until the person reaches normal retirement age, or for 10 years if that is longer. The purpose of the record is to enable accurate information to be given in response to any future request for a reference. It will provide clarification in cases where a future CRB disclosure reveals information from the police that an allegation was made, but did not result in a prosecution or a conviction. It will also prevent unnecessary re-investigation if, as sometimes happens, allegations resurface after a period of time.
- 6.45 The possible risk of harm to children posed by an accused person needs to be evaluated and managed effectively – in respect of the child(ren) involved in the allegations, and any other children in the individual's home, work or community life. In some cases this requires the employer to consider suspending the person. Suspension should be considered in any case where there is cause to suspect a child is at risk of significant harm, or the allegation warrants investigation by the police, or is so serious that it might be grounds for dismissal. People must not be suspended automatically or without careful thought. Employers must consider carefully whether the circumstances of a case warrant a person being suspended from contact with children until the allegation is resolved.

Note: neither the local authority, nor the police nor children's social services can require an employer to suspend a member of staff or volunteer. The power to suspend is vested in the employer alone. However, where a strategy discussion or initial evaluation discussion concludes that there should be enquiries by social services and/or an investigation by the police, the local authority designated officer should

canvass police/social services views about whether the accused member of staff needs to be suspended from contact with children, to inform the employer's consideration of suspension.

### **Effective support and supervision**

- 6.46 Working with children and families where it is suspected or confirmed that illness is being fabricated or induced in a child requires sound professional judgements to be made. It is demanding work that can be distressing and stressful. Practitioners are likely to need support to enable them to deal with the feelings the suspicion or identification of this type of abuse engenders, particularly if they have been very involved in the child's previous care and have formed close relationships with the family. It can be very distressing to a professional person, who has come to know a family well and trusted them, to have to deal with their feelings when they learn a child's illness has been caused by the actions of that child's primary carer.
- 6.47 All of those involved in such work should have access to advice and support, for example from peers, managers, named and designated professionals and external professionals with experience of fabricated or induced illness. For health professionals, the named doctor or nurse for safeguarding children matters within the NHS Trust will provide advice on how to manage these cases. If they are not available, or for those health professionals working independently, the designated doctor or nurse within the Local Health Board will fulfil this role. Supervisors should be available to practitioners as an important source of advice and expertise, and may be required to endorse judgements at certain key points in the safeguarding processes. Supervisors should also record key decision in case records.
- 6.48 It is not uncommon for staff within a team to have different opinions on how to manage cases where illness is being fabricated or induced in a child. This phenomenon is more likely when some staff do not believe that illness is being fabricated or induced in the child despite the objective evidence. Where these situations arise, senior staff should take responsibility for deciding how to manage this conflict. Open discussion of feelings and problems within the staff group can be very helpful. One option may be to use a professional either from within the team or who is well known to the team, such as a child and family psychiatrist, to assist them in managing this group process. Another option may be to engage the services of an independent person who has the appropriate skills. Irrespective of the method chosen, it is essential that staff are helped to understand what actions are necessary to safeguard the child's welfare and are clear that they should carry out their roles according to the agreed multi-agency plan.

6.49 For many practitioners involved in day-to-day work with children and families, effective supervision is important to promote good standards of practice and to support individual staff members. Supervision should help to ensure that practice is soundly based and consistent with LSCB and organisational procedures and that practitioners fully understand their roles, responsibilities and the scope of their professional discretion and authority. It should also help to identify the training and development needs of practitioners, so that each has the skills to provide an effective service. In some instances, staff themselves may come under suspicion for fabricating or inducing illness. For health staff, this may require them to change their working practice, for example two nurses undertaking all the child's care so that they cannot be accused of harming the child if suspicions are not substantiated. This situation should be dealt with as set out in paragraphs 6.40 – 6.45 above.

### **Inter-agency training and development**

6.50 Chapter 11 of *Safeguarding Children* sets out in detail the importance of inter-agency training and development to support the use of the guidance. This section does not repeat what is set out in *Safeguarding Children*, but addresses the specific training implications of identifying and managing situations where it is suspected or known that illness is being fabricated or induced in a child by a carer. Training on fabricated or induced illness in a child requires specialist knowledge, and the training needs of one discipline may be quite different to those of another. This requirement should be built into programme planning, and programmes tailored to address the range of professional roles and responsibilities set out earlier in Chapter 3.

6.51 Staff should be able to exercise professional skill in terms of effective information sharing where they have concerns about the fabrication or induction of illness. They should also be able to use their knowledge and skills in collaborating with other agencies and disciplines in this area of work. They need a sound understanding of the legislative framework within which they will be working, especially with regard to the use of covert video surveillance and information sharing.

6.52 Individual agencies are responsible for ensuring that staff are competent and confident in carrying out their responsibilities for safeguarding and promoting children's welfare. Continuing professional development should be supported to enable their employees to develop and maintain the necessary knowledge, values and skills to work together to safeguard and promote the welfare of children.

6.53 Employers should ensure that their employees are aware of how to recognise and respond to safeguarding concerns, including the fabrication or induction of illness. This knowledge and expertise should be put in place before attending inter-agency training. Employers also

have a responsibility to identify adequate resources and support for inter-agency training by:

- providing staff who have the relevant expertise to support the LSCB, for example by sitting on an LSCB training sub-group and/or contributing to training;
- allocating the time required to complete inter-agency training tasks effectively;
- releasing staff to attend the appropriate inter-agency training courses;
- ensuring that staff receive relevant single agency training that enables them to maximise the learning derived from inter-agency training, and have opportunities to consolidate learning from inter-agency training; and
- contributing to the planning, resourcing, delivery and evaluation of training.

6.54 Local authorities are responsible for ensuring that workforce strategies are developed in their local area. This includes making sure that training opportunities to meet needs identified by the LSCBs are available. They should establish systems for the delivery of single agency and inter-agency training on safeguarding and promoting the welfare of children. They should consider, in discussion with the LSCB, which bodies should commission or deliver the training, including that on fabricated or induced illness.

6.55 NHS Trusts should ensure that appropriate training is available to professional staff at all levels and in all disciplines, including surgery. They should also satisfy themselves, in their roles as commissioners of services, that appropriate training is available to all those in organisations that have regular contact with children. Named doctors and nurses, in conjunction with designated doctors and nurses, are responsible for advising on such training. The Royal Colleges have a role in incorporating appropriate training in the recommended syllabuses of both postgraduate and continuing professional development programmes.

### **The purpose of inter-agency training**

6.56 Training should be available at a number of levels to address the learning needs of different staff. The framework set out in paragraphs 11.6 and 11.7 of *Safeguarding Children* outlines three stages of training, and matches them with target audiences that have different degrees of involvement or decision making responsibility for children's welfare. Decisions should be made locally about how the stages are most appropriately delivered in respect of fabricated or induced illness in children, and this should be part of the local workforce training strategy developed to meet the need identified by the LSCB.

- 6.57 There are significant numbers of people who are in contact with children living away from their families. Their introductory training on safeguarding children should include being alert to children who are deemed to be ill by their parents, but who do not exhibit the expected signs and symptoms of such an illness, and knowing with whom to discuss any concerns, in accordance with the LSCB's safeguarding procedures.
- 6.58 The detailed content of training at each level of the framework shown should be specified locally. The content of training programmes should be regularly reviewed and updated in the light of research and practice experience.

### **Complaints procedures**

- 6.59 Complaints about individual agencies, their performance and provision (or non-provision) of services should be responded to in accordance with the relevant agency's complaints handling process. For example, local authority children's social services are required (by s26 of the Children Act 1989) to establish complaints procedures to deal with complaints arising in respect of Part III of the Act.
- 6.60 Parents/care givers- and, on occasion, children – may have concerns about which they may wish to make representations or complain, in respect of one or more of the following aspects of the functioning of child protection conferences:
- the process of the conference;
  - the outcome, in terms of the fact of and/or the category of primary concern at the time the child became the subject of a child protection plan;
  - a decision for the child to become, or not to become, the subject of a child protection plan, or the child continuing to be the subject of a child protection plan.
- 6.61 Complaints about aspects of the functioning of conferences described above should be addressed to the conference chair. Such complaints should be passed to the children's social services, who should deal with them as if they had been made in relation to functions under Part III of the Children Act 1989. On considering and responding to complaints, the local authority should form an inter-agency panel made up of senior representatives from LSCB member agencies. The panel should consider whether the relevant inter-agency protocols and procedures have been correctly observed, and whether the decision that is being complained about follows reasonably from the proper observation of the protocol(s).



6.62 In addition, representations and complaints may be received by individual agencies in respect of services provided (or not provided) as a consequence of assessments and conferences, including those set out in child protection plans. Such concerns should be responded to by the relevant agency in accordance with its own processes for responding to such matters. Where the complaint involves a health professional, the involvement of the designated doctor or nurse will be helpful in planning how best to respond.

## APPENDIX 1

### LEGISLATIVE FRAMEWORK

#### United Nations Convention on the Rights of the Child

1. This guidance reflects the principles contained within the United Nations Convention on the Rights of the Child, ratified by the UK Government in 1991. Specifically:
  - Article 3: State parties shall ensure that the best interests of the child shall be a primary consideration when action is taken concerning children;
  - Article 9: State parties should ensure that children shall not be separated from their parents unless such separation is necessary in the best interests of the child;
  - Article 19: State parties shall take all appropriate measures to protect children from abuse or neglect;
  - Article 37: (a) no child shall be subjected to torture or other cruel, inhumane or degrading treatment or punishment; (b) no child shall be deprived of his or her liberty unlawfully or arbitrarily;
  - Article 39: all appropriate measures shall be taken to promote the physical and psychological recovery and social re-integration of a child victim of any form of neglect or abuse.

#### Children Act 1989

2. The guidance is particularly informed by the requirements of the Children Act 1989, which provides a comprehensive framework for the care and protection of children.
3. The Children Act 1989 places two specific duties on agencies to co-operate in the interests of vulnerable children:

**Section 27** provides that a local authority may request help from:

- any local authority;
- any local education authority;
- any local housing authority;
- any Local Health Board or NHS Trust; and
- any person authorised by the Welsh Assembly Government for the purposes of this section,

in exercising the local authority's functions under Part III of the Act. This part of the Act places a duty on local authorities to provide

support and services for children in need, including children looked after by the local authority and those in secure accommodation. The authority whose help is requested in these circumstances has a duty to comply with the request, by taking the action specified by the requesting local authority, provided it is compatible with its other duties and functions and does not unduly prejudice the discharge of any of that authority's functions.

**Section 47** places a duty on:

- any local authority;
- any local education authority;
- any local housing authority;
- any Local Health Board or NHS Trust; and
- any person authorised by the Welsh Assembly Government for the purposes of this section,

to help a local authority with its enquiries in cases where the authority are informed that a child who lives, or is found, in their area is the subject of an emergency protection order, or is in police protection, or has contravened a ban imposed by a curfew notice, or the authority has reasonable cause to suspect that a child is suffering, or is likely to suffer, significant harm, unless doing so would be unreasonable in all the circumstances of the case.

### **The concept of significant harm**

4. The Children Act 1989 introduced the concept of significant harm as the threshold justifying compulsory intervention in family life in the best interests of the child. A court may only make a care order (committing the child to the care of the local authority) or supervision order (putting the child under the supervision of a social worker or a probation officer) in respect of a child if it is satisfied that:
  - the child is suffering, or is likely to suffer, significant harm; and
  - the harm or likelihood of harm is attributable to a lack of adequate parental care or control (s31).
5. There are no absolute criteria on which to rely when judging what constitutes significant harm. Sometimes, a single traumatic event may constitute significant harm, for example a violent assault, intentional suffocation or poisoning. More often, significant harm is a compilation of significant events, both acute and long-standing, that interrupt, change or damage the child's physical, social and psychological development. Long-term physical or emotional abuse can cause impairment to such an extent that it constitutes significant harm. For each child, it is necessary to consider the harm they have suffered in the context of the family's strengths and supports.

**Under s31(9) of the Children Act 1989:**

'Harm' means the ill-treatment or the impairment of health or development (including, for example, impairment suffered from seeing or hearing the ill-treatment of another);

'Development' means physical, intellectual, emotional, social or behavioural development;

'Health' means physical or mental health; and

'Ill-treatment' includes sexual abuse and forms of ill-treatment that are not physical.

**Under s31(10) of the Act:**

Where the question of whether harm suffered by a child is significant turns on the child's health and development, his health or development shall be compared with that which could reasonably be expected of a similar child.

6. In deciding whether a child has been suffering, or is likely to suffer, significant harm, it is necessary to consider the information gathered during an assessment under each dimension heading in the *Assessment Framework*. This includes:
  - the nature of harm, in terms of ill-treatment or failure to provide adequate care;
  - the impact on the child's health or development;
  - the child's development within the context of their family and wider environment;
  - any special needs, such as a medical condition, communication difficulty or disability that may affect the child's development and care within the family;
  - the capacity of parents to adequately meet the child's needs; and
  - the wider family and environmental context.
  
7. The child's reactions, his or her perceptions, and wishes and feelings should be ascertained and taken account of according to the child's age and understanding. S53 of the Children Act 2004 amended s17 and s47 of the Children Act 1989, so that before determining what, if any, services to provide a child in need under s17, or action to take with respect to a child under s47, the wishes and feelings of the child should be ascertained as far as is reasonable and given due consideration.

**Children Act 2004**

8. S25 requires each local authority to make arrangements to promote co-operation between the authority, each of the authority's relevant partners and such other persons or bodies working with children in the

local authority area as the authority considers appropriate. The arrangements are to be made with a view to improving the wellbeing of children in the authority's area – which includes protection from harm or neglect alongside other adverse outcomes.

9. S28 requires a range of organisations to make arrangements for ensuring that their functions, and services provided on their behalf to discharge those functions, are provided with regard to the need to safeguard and promote the welfare of children.
10. S29 enables the Welsh Assembly Government to require local authorities to establish and operate databases relating to the s25 or s28 duties above, or in the s175 duty below, or to establish and operate databases nationally. S29(7) sets out which organisations can be required to, and s29(8) sets out which organisations can be enabled to disclose information to be included in the databases.
11. S31 requires each local authority to establish a LSCB. It also requires a range of organisations to take part in LSCBs. Sections 31 – 34 set out the framework for LSCBs, and the LSCB Regulations set out the requirements in more detail, in particular on LSCB functions.

### **Education Act 2002**

12. S175 places a duty on local authorities and governing bodies of maintained schools and further education institutions to have arrangements for exercising the functions conferred on them with a view to safeguarding and promoting the welfare of children – children who are pupils, and students under 18 years of age in the case of schools and colleges.
13. The same duty is put on independent schools by the Education Wales (Independent Schools Standards) (Wales) Regulations 2003 made under s157 of that Act.

### **Human Rights Act 1998**

14. The Human Rights Act 1998 is also fundamental to this guidance. S6(1) places a duty on all public authorities to act in a way that is compatible with the rights and freedoms of the European Convention of Human Rights that have been incorporated by the 1998 Act. These Convention rights include Article 3 – “no one shall be subjected to torture or to inhuman or degrading treatment or punishment” and Article 8 – “everyone has the right to respect for his private and family life, his home and his correspondence”.
15. The Human Rights Act 1998 has been interpreted as placing obligations on public authorities, both to refrain from certain action and, in some circumstances, to take positive steps or measures to protect the Convention rights of individuals.

16. A public authority includes “any person certain of whose functions are functions of a public nature”. There will be some bodies, for example local authorities that are clearly public authorities under the Act. However, other bodies may exercise both public and private functions. Where those functions are of a public nature, they must be exercised compatibly with the Convention rights incorporated by the Human Rights Act. Where there is any doubt, it is important that bodies seek their own legal advice.

### **The European Convention on Human Rights**

17. Article 8 of the European Convention on Human Rights states that:
  - (1) Everyone has the right to respect for his private and family life, his home and his correspondence.
  - (2) There shall be no interference by a public authority with the exercise of this right except such as in accordance with the law and is necessary in a democratic society in the interests of national security, public safety or the economic wellbeing of the country, for the prevention of disorder or crime, for the protection of health or morals, or for the protection of the rights and freedoms of others.
18. Disclosure of information without the consent of the data subject or a person acting on their behalf might give rise to an issue under Article 8. Disclosure of information to safeguard children will usually be for the protection of health or morals, for the protection of the rights and freedoms of others, or for the prevention of disorder or crime. Disclosure should be appropriate for the purpose and only to the extent necessary to achieve that purpose. Legal advice should be sought where appropriate, or in cases of doubt.

### **Regulation of Investigatory Powers Act 2000**

19. Of particular significance is the Regulation of Investigatory Powers Act 2000. The main purpose of this Act is to ensure that investigatory powers are used in accordance with human rights. These powers include the use of covert video surveillance in the course of specific operations. Part II and Schedule I to the Act set out a system of authorisations for the use of surveillance.

## References

Adshead, G & Brooke, D (2001): *Munchausen Syndrome by Proxy. Current Issues in Assessment, Treatment and Research*. Imperial College Press, London.

Bass, C & Adshead, G (2007): *Fabrication and induction of illness in children: the psychopathology of abuse. Advances in Psychiatric Treatment*. **13**: 169-177.

Berg, B & Jones, D P H (1999): Outcome of psychiatric intervention in factitious illness by proxy (Munchausen syndrome by proxy). *Archives of Disease in Childhood*. **81**: 0-7.

Black, D & Hollis, P (1996): Psychiatric treatment of factitious illness in an infant (Munchausen by Proxy Syndrome). *Clinical Child Psychology and Psychiatry*. **1**: 89-98.

Bluglass, K (2001): *Treatment of Perpetrators*. In Adshead, G & Brooke, D (eds) (2001): *Munchausen Syndrome by Proxy. Current Issues in Assessment, Treatment and Research*. Imperial College Press, London.

Bools, C N (1996): Factitious Illness by Proxy: Munchausen Syndrome by Proxy. *British Journal of Psychiatry*. **169**: 268-275.

Bools, C N; Neale, B A & Meadow, S R (1992): Co-morbidity associated with fabricated illness (Munchausen Syndrome by Proxy). *Archives of Disease in Childhood*. **67**: 77-79.

Bools, C N; Neale, B A & Meadow, S R (1993): Follow up of victims of fabricated illness (Munchausen Syndrome by Proxy). *Archives of Disease in Childhood*. **69**: 625-630.

Bools, C N; Neale, B A & Meadow, S R (1994): Munchausen Syndrome by Proxy: A Study of Psychopathology. *Child Abuse and Neglect*. **18**: 773-788.

Brooke, D & Adshead, G (2001): *Current Challenges in the Management of Perpetrators*. In Adshead, G & Brooke, D (2001): *Munchausen Syndrome by Proxy. Current Issues in Assessment, Treatment and Research*. Imperial College Press, London

*Children Act 1989*. HMSO, London.

*Children Act 2004*. HMSO, London.

Cleaver, H (2000): *Fostering Family Contact: a study of children, parents and foster carers*. The Stationery Office, London.

Coombe, P (1995): The in-patient psychotherapy of a mother and child at the Cassel Hospital: A case of Munchausen's Syndrome by Proxy. *British Journal of Psychotherapy*. **12**: 195-207.

Criminal Justice System (2007): *Achieving Best Evidence in Criminal Proceedings: Victims and Witnesses and Using Special Measures*. Criminal Justice System, London.

Crown Prosecution Service, Department of Health and Home Office (2001): *Provision of Therapy for Child Witnesses prior to a Criminal Trial*. Practice Guidance, London CPS ([www.cps.gov.uk/publications/docs/therapychild.pdf](http://www.cps.gov.uk/publications/docs/therapychild.pdf))

*Data Protection Act 1998*. HMSO, London.

Davis, P; McClure, R J; Rolfe; K; Chessman, N; Pearson, S; Sibert, J R & Meadow, R (1998): Procedures, placement, and risks of further abuse after Munchausen syndrome by proxy, non-accidental poisoning, and non-accidental suffocation. *Archives of Disease in Childhood*. **78(3)**: 217-221.

Department of Health (1995): *Child Protection: Messages from Research*. HMSO, London.

Department of Health (2000b): *Report of a review of the research framework in North Staffordshire Hospital NHS Trust*. Department of Health, London.

Department of Health (2001): *Children Act Now: Messages from Research*. The Stationery Office, London.

Department of Health (2006) *Memorandum of Understanding - investigating patient safety incidents involving unexpected death or serious untoward harm: a protocol for liaison and effective communications between the NHS, Association of Chief Police Officers and Health and Safety Executive*. Department of Health, London.

Department of Health (2006): *Guidelines for the NHS in support of the Memorandum of Understanding - investigating patient safety incidents involving unexpected death or serious untoward harm: a protocol for liaison and effective communications between the NHS, Association of Chief Police Officers and Health and Safety Executive*. Department of Health, London.

Eminson, M (2000a): *Munchausen Syndrome by Proxy Abuse: an introduction*. In Eminson, M & Postlethwaite, R (2000): *Munchausen Syndrome by Proxy Abuse: A Practical Approach*. Butterworth - Heinemann, Oxford.

Eminson, M (2000b): Background in Eminson, M & Postlethwaite, R (2000): *Munchausen Syndrome by Proxy Abuse: A practical approach*. Butterworth - Heinemann, Oxford.

Eminson, D M & Postlethwaite, R J (1992): Factitious Illness: recognition and management. *Archives of Disease in Childhood*. **67**: 1510-1516.

Eminson, D M & Postlethwaite, R J (2000): *Munchausen Syndrome by Proxy Abuse: A practical approach*. Arnold, London.



Falkov, A; Mayes, K; Diggins, M; Silverdale, N & Cox A, (1998): *Crossing Bridges – Training resources for working with mentally ill parents and their children*. Pavilion Publishing, Brighton.

General Medical Council (2006): *Good Medical Practice*.

Gray, J & Bentovim, A (1996): Illness Induction Syndrome: Paper I - a series of 41 children from 37 families identified at the Great Ormond Street Hospital for Children NHS Trust. *Child Abuse and Neglect*. 20 **8**: 655-673.

Gray, J; Bentovim, A & Milla, P (1995): *The treatment of children and their families where induced illness has been identified*. In: Horwath, J & Lawson, B (eds) (1995): *Trust Betrayed? Munchausen Syndrome by Proxy - inter-agency child protection and partnership with families*. National Children's Bureau, London.

Griffith, J (1988): The Family Systems of Munchausen Syndrome by Proxy. *Family Process*. **27**: 423-437.

Horwath, J & Lawson, B (eds) (1995): *Trust Betrayed? Munchausen Syndrome by Proxy: inter-agency child protection and partnership with families*. National Children's Bureau, London.

*Human Rights Act 1998*. The Stationery Office, London.

Information Commissioner (2002): *The Use and Disclosure of Health Data*.

Jones, D P H (1998): The effectiveness of intervention. In Adcock, M & White, R (eds) (1998): *Significant Harm: its management and outcome*, pp. 91-119. Significant Publications, Croydon.

Jones, D P H & Bools, C N (1999): *Factitious illness by proxy*. In David, T J (ed): *Recent Advances in Paediatrics*, 17 pp 57-71. Churchill Livingstone, London.

Jones, D P H; Byrne, G & Newbold, C (2002): in Eminson, M & Postlethwaite, R (2000): *Munchausen Syndrome by Proxy Abuse: A practical Approach*. Butterworth - Heinemann, Oxford.

Jureidini, J (1993): Obstetric Factitious Disorder and Munchausen Syndrome by Proxy. *The Journal of Nervous and Mental Disease*. **181** (2): 135-137.

Makar, A & Squier, P (1990): Munchausen Syndrome by Proxy: father as a perpetrator. *American Journal of Paediatrics*. **85**: 370-373.

Manthei, D J; Pierce, R L; Rothbaum, R J; Manthei, U & Keating, J P (1988): Munchausen Syndrome by Proxy: Covert Child Abuse. *Journal of Family Violence*. 3 **2**:131-140.

McClure, R J; Davis, P M; Meadow, S R & Sibert, J R (1996): Epidemiology of Munchausen syndrome by proxy: non-accidental poisoning and non-accidental suffocation. *Archives of Disease in Childhood*. **75**: 57-61.

McGuire, T L & Feldman, K W (1998): Psychological morbidity of children subjected to Munchausen Syndrome by Proxy. *Paediatrics* **83**: 289-292.

National Assembly for Wales (2006): National Assembly for Wales Circular 47/06: *Inclusion and Pupil Support*.

National Assembly for Wales and Home Office (2001): *Framework for the Assessment of Children in Need and their Families*. The Stationery Office, London.

Neale, B; Bools, C & Meadow, R (1991): Problems in the assessment and management of Munchausen Syndrome by proxy abuse. *Children and Society*. **5** **4**: 324-333.

Nicol, A R & Eccles, M (1985): Psychotherapy for Munchausen Syndrome by Proxy. *Archives of Diseases in Childhood*. **60**: 344-348.

Nursing and Midwifery Council (2006): *Advice on Record Keeping*. NMC, London.

*Regulation of Investigatory Powers Act 2000*. HMSO, London.

Rogers, D; Tripp, J; Bentovim, A; Robinson, A; Berry, D & Golding, R (1976): Non-accidental poisoning: an extended syndrome of child abuse. *British Medical Journal*. **1**: 793-796.

Rosenberg, D (1987): Web of Deceit: a literature review of Munchausen Syndrome by Proxy. *Child Abuse and Neglect*. **11**:547-563.

Royal College of Paediatrics and Child Health (2002): *Fabricated or Induced Illness by Carers*. RCPCH, London.

Samuels, M; McClaughlin, W; Jacobson, R; Poets, C & Southall, D (1992): Fourteen cases of imposed upper airway obstruction. *Archives of Disease in Childhood*. **67**: 162-170.

Sanders, M J (1995): Symptom coaching: factitious disorders by proxy with older children. Special Issue: the impact of the family on child adjustment and psychopathology. *Clinical Psychology Review*. **15**: 423-442.

Schreier, H A & Libow, J A (1993): *Hurting for Love: Munchausen by Proxy Syndrome*. The Guilford Press, New York.

Welsh Assembly Government (2007): *Safeguarding Children: Working Together under the Children Act 2004*

Welsh Assembly Government (2007): *Statement on the duties of doctors and other health professionals in investigations of child abuse*

Welsh Assembly Government (2008): *Safeguarding Children: The role of local authorities and governing bodies under the Education Act 2002*

PHOTO REDACTED DUE TO THIRD PARTY RIGHTS OR OTHER LEGAL ISSUES AND IS LABELLED AS SUCH IN THE DOCUMENT